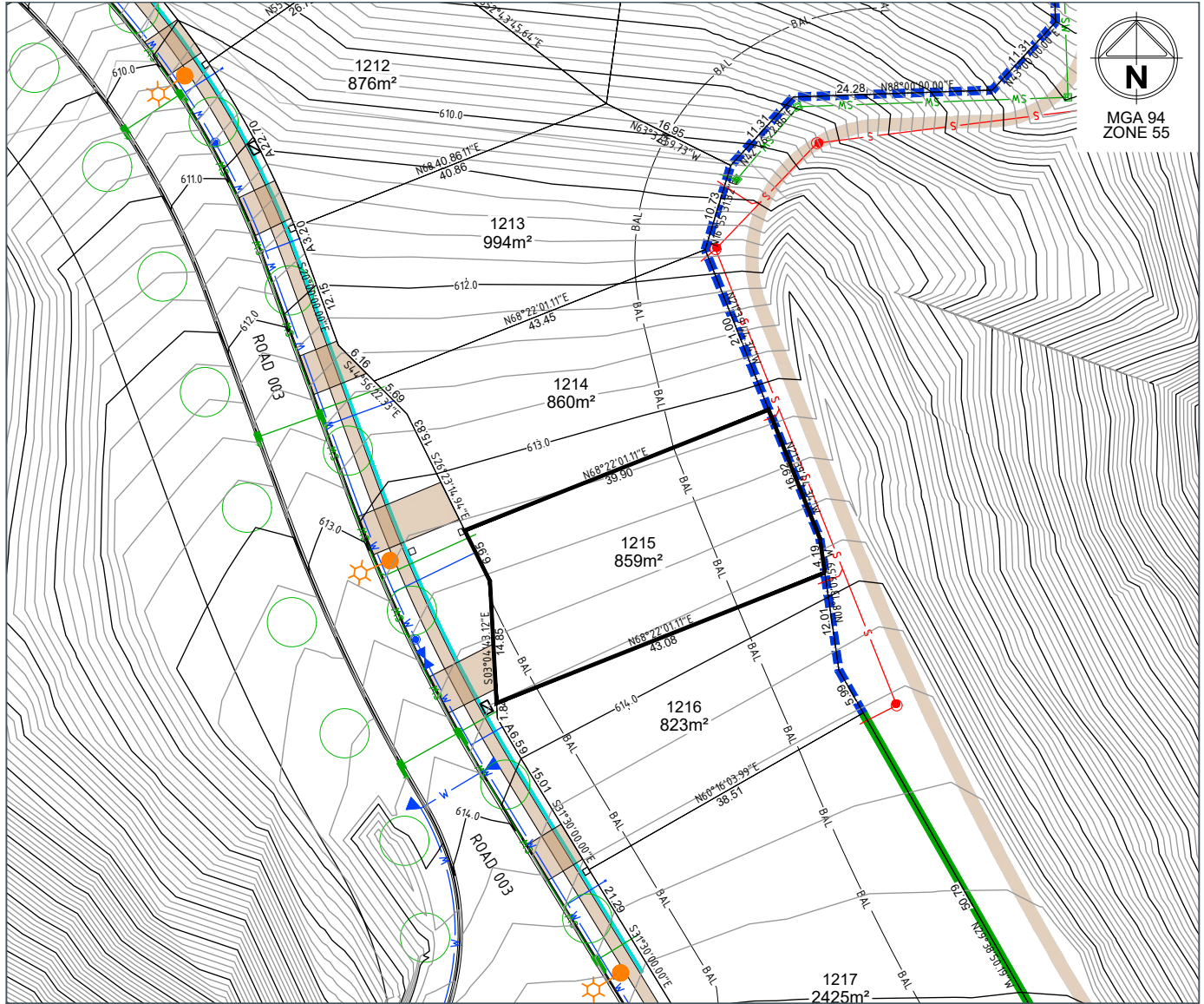


Jumping Creek

Home is here.

LOT 1215

LOT PLAN LAYOUT



LOT LAYOUT - SCALE 1:400 (A4)

REVISION 02

DATE 31/03/2022

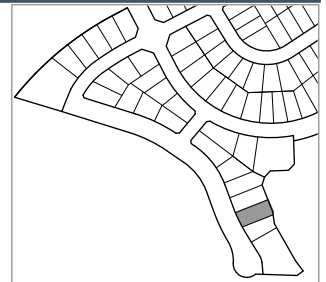
LEGEND

LOT BOUNDARY	—	WATER SERVICES TRENCH (Electricity, NBN)	— W —
FINISHED SURFACE CONTOUR (0.2m)	— 590.0 —	STREETLIGHT	☀
BLOCK AREA / BOUNDARY LENGTH	400m ² 4.54	SUBSTATION	☐
BLOCK BEARING	90°00'00"	ELECTRICAL PILLAR / PIT	☐
EASEMENT (Sewer and/or Stormwater)	---	NBN PIT	☐
DRAINAGE / STRUCTURE	— SW —	SUGGESTED DRIVEWAY LOCATION	☐
SEWER / STRUCTURE	— S —		
SEWER RISING MAIN	— SRM —		

STREET TREE/EXISTING TREE	○
PATH (1.5m wide)	—
RETAINING WALL	—
BAL 29 LINE	— BAL —
COLOURBOND FENCE	—
FARM FENCE	—

STREET TREE/EXISTING TREE	○
PATH (1.5m wide)	—
RETAINING WALL	—
BAL 29 LINE	— BAL —
COLOURBOND FENCE	—
FARM FENCE	—

LOCALITY PLAN



DRAFT

© Spiire Australia Pty Ltd All Rights Reserved
 This document is produced by Spiire Australia Pty Ltd solely for the benefit of and use by the client in accordance with the terms of the retainer. Spiire Australia Pty Ltd does not and shall not assume any responsibility or liability whatsoever to any third party arising out of any use or reliance by third party on the content of this document.

Disclaimer: All care has been taken in the preparation of this material. No responsibility is taken by the vendor for any errors or omissions, and details may be subject to change. Artwork, images and plans are artists impressions only and are not relied on as a definitive reference. All road designs, contours, lot sizes, lot dimensions, easements, covenants, trees, streetlights, substations, pit and pillars are preliminary only and are subject to final survey. For final Lot numbers refer registered deposited plans (DP).



file name: 307857CG000.dwg, layout name: CG000, created by: Benjamin Carroll, file location: \\spiire\canda\data\307857CG000\DWG\01.dwg, plot date: 31/03/2022 4:31 PM, Sheet of Sheets