



Retaining Wall Lot 2275  
 Min Height:- 0.6m  
 Max Height:- 0.7m  
 Average Height:- 0.65m

Retaining Wall Lot 2275  
 Min Height:- 1.1m  
 Max Height:- 1.7m  
 Average Height:- 1.4m

**ADDITIONAL NOTES:**

The LOT dimensions and area shown hereon are subject to final field survey and also to the requirements of Council and any other authority which may have requirements under any relevant legislation

Final surface contours shown hereon have been supplied by Peak Urban.

Location of retaining walls are as shown on Engineering design drawings. Their as-constructed location may differ from their design location. Retaining wall heights have been supplied by Peak Urban. **The engineering detail shown hereon are preliminary only and are subject to change in final design and statutory approvals**

Compaction of any fill material placed on this site shall be completed to level one inspection and testing services in accordance with AS3798-2007.

Depth of fill values are calculated to the pre-development surface.  
 Copyright © Veris Australia Pty Ltd  
 11/03/2022.

**FLAGSTONE  
 PRECINCT 1 STAGE 5B(i)**  
 For  
**PEET FLAGSTONE  
 CITY PTY LTD**

**IMPORTANT NOTES:**  
 (These notes are an integral part of this plan)

This plan has been prepared for **PEET FLAGSTONE CITY PTY LTD** for the purposes of **A Disclosure Plan Under the Land Sales Act 1984 (as amended)**.

It is not to be used by any other person or corporation or for any other purposes and is subject to the following limitations:

Please refer to the approved Development Application for conditions relating to the LOT and to approved Operational Works drawings for services location and possible easements.

THESE DESIGNS AND DRAWINGS ARE COPYRIGHT AND ARE NOT TO BE USED OR REPRODUCED WITHOUT THE WRITTEN PERMISSION OF VERIS

**Data Sources**  
 Cadastral Boundaries  
 30109-LC-Master(CW) FS94 2014.dwg  
 Engineering Design  
 FLAGSTONE - BASE - STAGE 5A 5B - DISCLOSURE INFO - 27 01 2022.dwg  
 Final Surface Contours  
 FLAGSTONE - BASE - STAGE 5A 5B - DISCLOSURE INFO - 27 01 2022.dwg  
 Depth of Fill  
 FLAGSTONE - DEPTH RANGE CONTOURS - STAGE 5A 5B - DISCLOSURE INFO - 27 01 2022.dwg

Issue	Revisions	Date	Drawn
A	Original	11.03.2022	BK

Locality: FLAGSTONE  
 Local Authority: LOGAN CITY COUNCIL  
 Horizontal Meridian: MGA, Zone 56  
 Vertical Level Datum: AHD D  
 Scale: 1:250 @ A4  
 Designed: Peak Urban  
 Drawn: BK 11/03/2022  
 Checked: DE 11/03/2022  
 Plot Date: 11 Mar, 2022  
 Computer File Ref: 30109-St5B(i)-DP-(A).dwg

**DISCLOSURE PLAN  
 of Proposed LOT 2275  
 being part of  
 Lot 911  
 on SP321079**



BRISBANE (07) 3686 4700 WHITSUNDAYS (07) 4945 6600  
 MACKAY (07) 4957 9700 CAIRNS (07) 4252 9400  
 veris.com.au  
 ACN 615 735 727  
 Veris Australia Pty Ltd

Drawing No 30109-DP- 2275 Issue A

**LEGEND**

Final surface contours based on A.H.D. datum at an interval of 0.5m, shown as: 15.5

Where applicable, areas to be filled are shown as:

Depth of fill, in metres, shown as:- + 0.5

Retaining wall and retaining wall height, shown on the lower side of the wall, have been taken from plans supplied by Peak Urban and shown as: (1.2)

Bin Pad Location shown as:

12.5m 50 mm 25m 100 mm 37.5m 150 mm SCALE BAR



Retaining Wall Lot 2307  
 Min Height:- 0.8m  
 Max Height:- 1.2m  
 Average Height:- 1.0m

PROPOSED  
 LOT 2306

PROPOSED  
 LOT 2277

**2307**  
 516m<sup>2</sup>

Retaining Wall Lot 2307  
 Min Height:- 0.3m  
 Max Height:- 0.3m  
 Average Height:- 0.3m

PROPOSED  
 LOT 2275

Retaining Wall Lot 2275  
 Min Height:- 1.1m  
 Max Height:- 1.7m  
 Average Height:- 1.4m

**ROAD**

**ROAD**

**ADDITIONAL NOTES:**

The LOT dimensions and area shown hereon are subject to final field survey and also to the requirements of Council and any other authority which may have requirements under any relevant legislation

Final surface contours shown hereon have been supplied by Peak Urban.

Location of retaining walls are as shown on Engineering design drawings. Their as-constructed location may differ from their design location. Retaining wall heights have been supplied by Peak Urban. **The engineering detail shown hereon are preliminary only and are subject to change in final design and statutory approvals**

Compaction of any fill material placed on this site shall be completed to level one inspection and testing services in accordance with AS3798-2007.

Depth of fill values are calculated to the pre-development surface.  
 Copyright © Veris Australia Pty Ltd  
 11/03/2022.

**FLAGSTONE  
 PRECINCT 1 STAGE 5B(i)**  
 For  
**PEET FLAGSTONE  
 CITY PTY LTD**

**IMPORTANT NOTES:**  
 (These notes are an integral part of this plan)

This plan has been prepared for **PEET FLAGSTONE CITY PTY LTD** for the purposes of **A Disclosure Plan Under the Land Sales Act 1984 (as amended)**.

It is not to be used by any other person or corporation or for any other purposes and is subject to the following limitations:

Please refer to the approved Development Application for conditions relating to the LOT and to approved Operational Works drawings for services location and possible easements.

**THESE DESIGNS AND DRAWINGS ARE COPYRIGHT AND ARE NOT TO BE USED OR REPRODUCED WITHOUT THE WRITTEN PERMISSION OF VERIS**

**Data Sources**  
 Cadastral Boundaries  
 30109-LC-Master(CW) FS94 2014.dwg  
 Engineering Design  
 FLAGSTONE - BASE - STAGE 5A 5B - DISCLOSURE INFO - 27 01 2022.dwg  
 Final Surface Contours  
 FLAGSTONE - BASE - STAGE 5A 5B - DISCLOSURE INFO - 27 01 2022.dwg  
 Depth of Fill  
 FLAGSTONE - DEPTH RANGE CONTOURS - STAGE 5A 5B - DISCLOSURE INFO - 27 01 2022.dwg

Issue	Revisions	Date	BK	Drawn
A	Original	11.03.2022		

Locality: FLAGSTONE  
 Local Authority: LOGAN CITY COUNCIL  
 Horizontal Meridian: MGA, Zone 56  
 Vertical Level Datum: AHD D  
 Scale: 1:250 @ A4  
 Designed: Peak Urban  
 Drawn: BK 11/03/2022  
 Checked: DE 11/03/2022  
 Plot Date: 11 Mar, 2022  
 Computer File Ref: 30109-St5B-DP-(A).dwg

**DISCLOSURE PLAN  
 of Proposed LOT 2307**  
 being part of  
 Lot 911  
 on SP321079



**veris**

BRISBANE (07) 3688 4700 WHITSUNDAYS (07) 4945 6600

MACKAY (07) 4957 9700 CAIRNS (07) 4252 9400

veris.com.au  
 ACN 615 735 727  
 Veris Australia Pty Ltd

Drawing No: 30109-DP- 2307 Issue: A

**LEGEND**

Final surface contours based on A.H.D. datum at an interval of 0.5m, shown as: 15.5

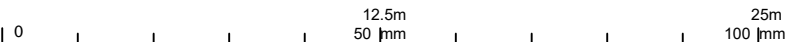
Where applicable, areas to be filled are shown as:

Depth of fill, in metres, shown as:- + 0.5

Retaining wall and retaining wall height, shown on the lower side of the wall, have been taken from plans supplied by Peak Urban and shown as:

Bin Pad Location shown as:

150 mm SCALE BAR





PROPOSED LOT 2309

PROPOSED LOT 2319

**2308**  
426m<sup>2</sup>

**ROAD**

**ROAD**

Retaining Wall Lot 2308  
Min Height:- 1.0m  
Max Height:- 2.6m  
Average Height:- 1.8m

Retaining Wall Lot 2308  
Min Height:- 0.6m  
Max Height:- 1.4m  
Average Height:- 1.0m

**ADDITIONAL NOTES:**

The LOT dimensions and area shown hereon are subject to final field survey and also to the requirements of Council and any other authority which may have requirements under any relevant legislation

Final surface contours shown hereon have been supplied by Peak Urban.

Location of retaining walls are as shown on Engineering design drawings. Their as-constructed location may differ from their design location. Retaining wall heights have been supplied by Peak Urban. **The engineering detail shown hereon are preliminary only and are subject to change in final design and statutory approvals**

Compaction of any fill material placed on this site shall be completed to level one inspection and testing services in accordance with AS3798-2007.

Depth of fill values are calculated to the pre-development surface.  
Copyright © Veris Australia Pty Ltd  
11/03/2022.

**FLAGSTONE  
PRECINCT 1 STAGE 5B(i)**  
For  
**PEET FLAGSTONE  
CITY PTY LTD**

**IMPORTANT NOTES:**  
(These notes are an integral part of this plan)

This plan has been prepared for PEET FLAGSTONE CITY PTY LTD for the purposes of **A Disclosure Plan Under the Land Sales Act 1984 (as amended)**.

It is not to be used by any other person or corporation or for any other purposes and is subject to the following limitations:

Please refer to the approved Development Application for conditions relating to the LOT and to approved Operational Works drawings for services location and possible easements.

**THESE DESIGNS AND DRAWINGS ARE COPYRIGHT AND ARE NOT TO BE USED OR REPRODUCED WITHOUT THE WRITTEN PERMISSION OF VERIS**

**Data Sources**  
Cadastral Boundaries  
30109-LC-Master(CW) FS94 2014.dwg  
**Engineering Design**  
FLAGSTONE - BASE - STAGE 5A 5B - DISCLOSURE INFO - 27 01 2022.dwg  
**Final Surface Contours**  
FLAGSTONE - BASE - STAGE 5A 5B - DISCLOSURE INFO - 27 01 2022.dwg  
**Depth of Fill**  
FLAGSTONE - DEPTH RANGE CONTOURS - STAGE 5A 5B - DISCLOSURE INFO - 27 01 2022.dwg

Issue	Revisions	Date	BK	Drawn
A	Original	11.03.2022	BK	

Locality: FLAGSTONE  
Local Authority: LOGAN CITY COUNCIL  
Horizontal Meridian: MGA, Zone 56  
Vertical Level Datum: AHD D  
Scale: 1:250 @ A4  
Designed: Peak Urban  
Drawn: BK 11/03/2022  
Checked: DE 11/03/2022  
Plot Date: 11 Mar, 2022  
Computer File Ref: 30109-St5B-DP-(A).dwg

**DISCLOSURE PLAN**  
of Proposed LOT 2308  
being part of  
Lot 911  
on SP321079



**veris**

BRISBANE (07) 3686 4700 WHITSUNDAYS (07) 4945 6600

MACKAY (07) 4957 9700 CAIRNS (07) 4252 9400

veris.com.au  
ACN 615 735 727  
Veris Australia Pty Ltd

Drawing No 30109-DP- 2308 Issue A

**LEGEND**

Final surface contours based on A.H.D. datum at an interval of 0.5m, shown as: 15.5

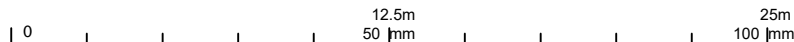
Where applicable, areas to be filled are shown as:

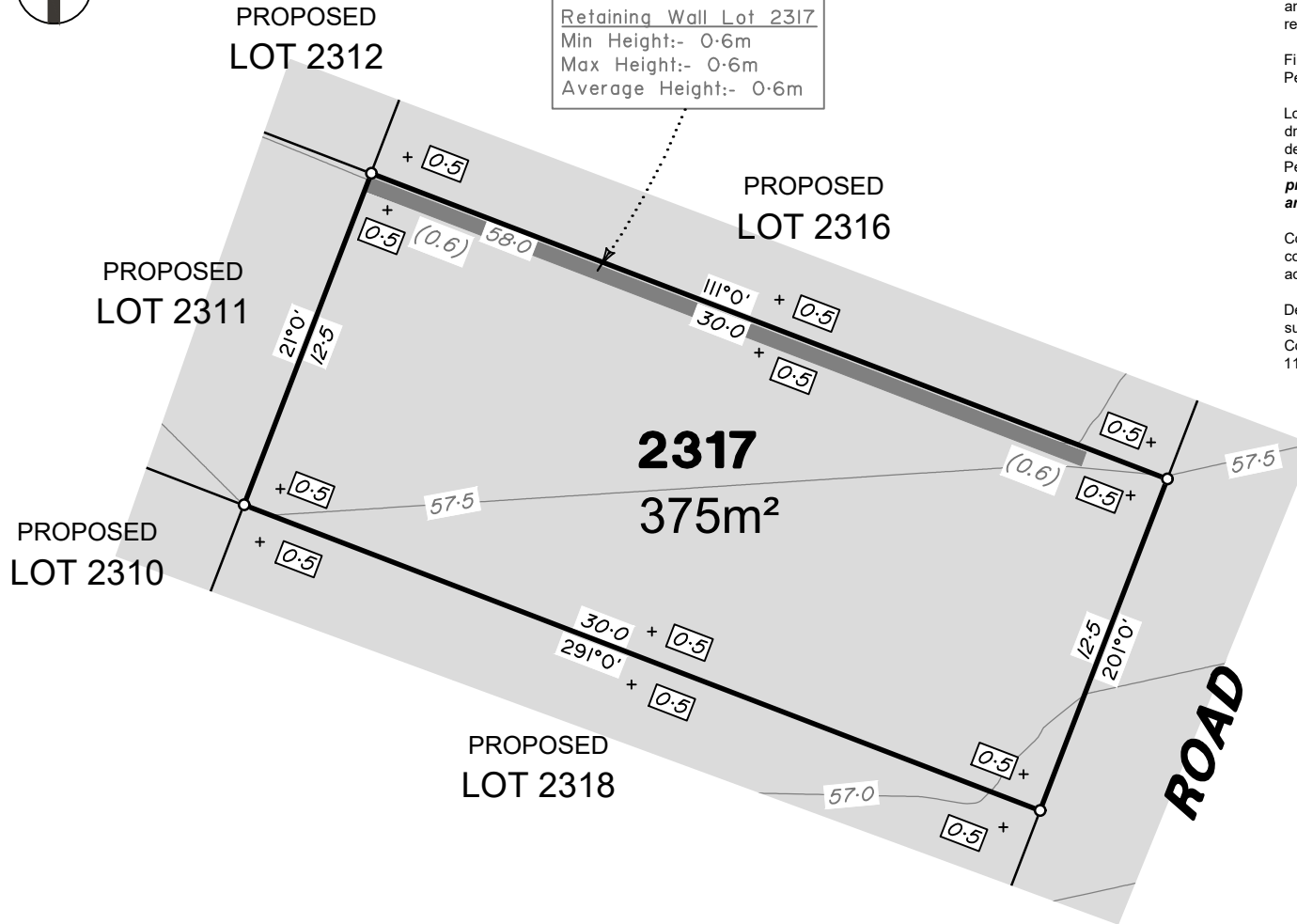
Depth of fill, in metres, shown as:- + 0.5

Retaining wall and retaining wall height, shown on the lower side of the wall, have been taken from plans supplied by Peak Urban and shown as:

Bin Pad Location shown as:

150 mm SCALE BAR





Retaining Wall Lot 2317  
 Min Height:- 0.6m  
 Max Height:- 0.6m  
 Average Height:- 0.6m

**ADDITIONAL NOTES:**  
 The LOT dimensions and area shown hereon are subject to final field survey and also to the requirements of Council and any other authority which may have requirements under any relevant legislation

Final surface contours shown hereon have been supplied by Peak Urban.

Location of retaining walls are as shown on Engineering design drawings. Their as-constructed location may differ from their design location. Retaining wall heights have been supplied by Peak Urban. **The engineering detail shown hereon are preliminary only and are subject to change in final design and statutory approvals**

Compaction of any fill material placed on this site shall be completed to level one inspection and testing services in accordance with AS3798-2007.

Depth of fill values are calculated to the pre-development surface.  
 Copyright © Veris Australia Pty Ltd  
 11/03/2022.

**FLAGSTONE  
 PRECINCT 1 STAGE 5B(i)**  
 For  
**PEET FLAGSTONE  
 CITY PTY LTD**

**IMPORTANT NOTES:**  
 (These notes are an integral part of this plan)  
 This plan has been prepared for PEET FLAGSTONE CITY PTY LTD for the purposes of a Disclosure Plan Under the Land Sales Act 1984 (as amended).  
 It is not to be used by any other person or corporation or for any other purposes and is subject to the following limitations:

Please refer to the approved Development Application for conditions relating to the LOT and to approved Operational Works drawings for services location and possible easements.

THESE DESIGNS AND DRAWINGS ARE COPYRIGHT AND ARE NOT TO BE USED OR REPRODUCED WITHOUT THE WRITTEN PERMISSION OF VERIS

**Data Sources**  
 Cadastral Boundaries  
 30109-LC-Master(CW) FS94 2014.dwg  
 Engineering Design  
 FLAGSTONE - BASE - STAGE 5A 5B - DISCLOSURE INFO - 27 01 2022.dwg  
 Final Surface Contours  
 FLAGSTONE - BASE - STAGE 5A 5B - DISCLOSURE INFO - 27 01 2022.dwg  
 Depth of Fill  
 FLAGSTONE - DEPTH RANGE CONTOURS - STAGE 5A 5B - DISCLOSURE INFO - 27 01 2022.dwg

A	Original	11.03.2022	BK
Issue	Revisions	Date	Drawn

Locality: FLAGSTONE  
 Local Authority: LOGAN CITY COUNCIL  
 Horizontal Meridian: MGA, Zone 56  
 Vertical Level Datum: AHD D  
 Scale: 1:250 @ A4  
 Designed: Peak Urban  
 Drawn: BK 11/03/2022  
 Checked: DE 11/03/2022  
 Plot Date: 11 Mar, 2022  
 Computer File Ref: 30109-St5B-DP-(A).dwg

**DISCLOSURE PLAN  
 of Proposed LOT 2317**  
 being part of  
 Lot 911  
 on SP321079



BRISBANE WHITSUNDAYS  
 (07) 3686 4700 (07) 4945 6600  
 MACKAY CAIRNS  
 (07) 4957 9700 (07) 4252 9400  
 veris.com.au  
 ACN 615 735 727  
 Veris Australia Pty Ltd

Drawing No Issue  
**30109-DP- 2317 A**

**LEGEND**

Final surface contours based on A.H.D. datum at an interval of 0.5m, shown as: 15.5

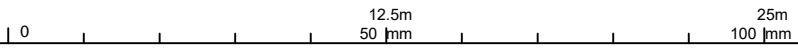
Where applicable, areas to be filled are shown as:

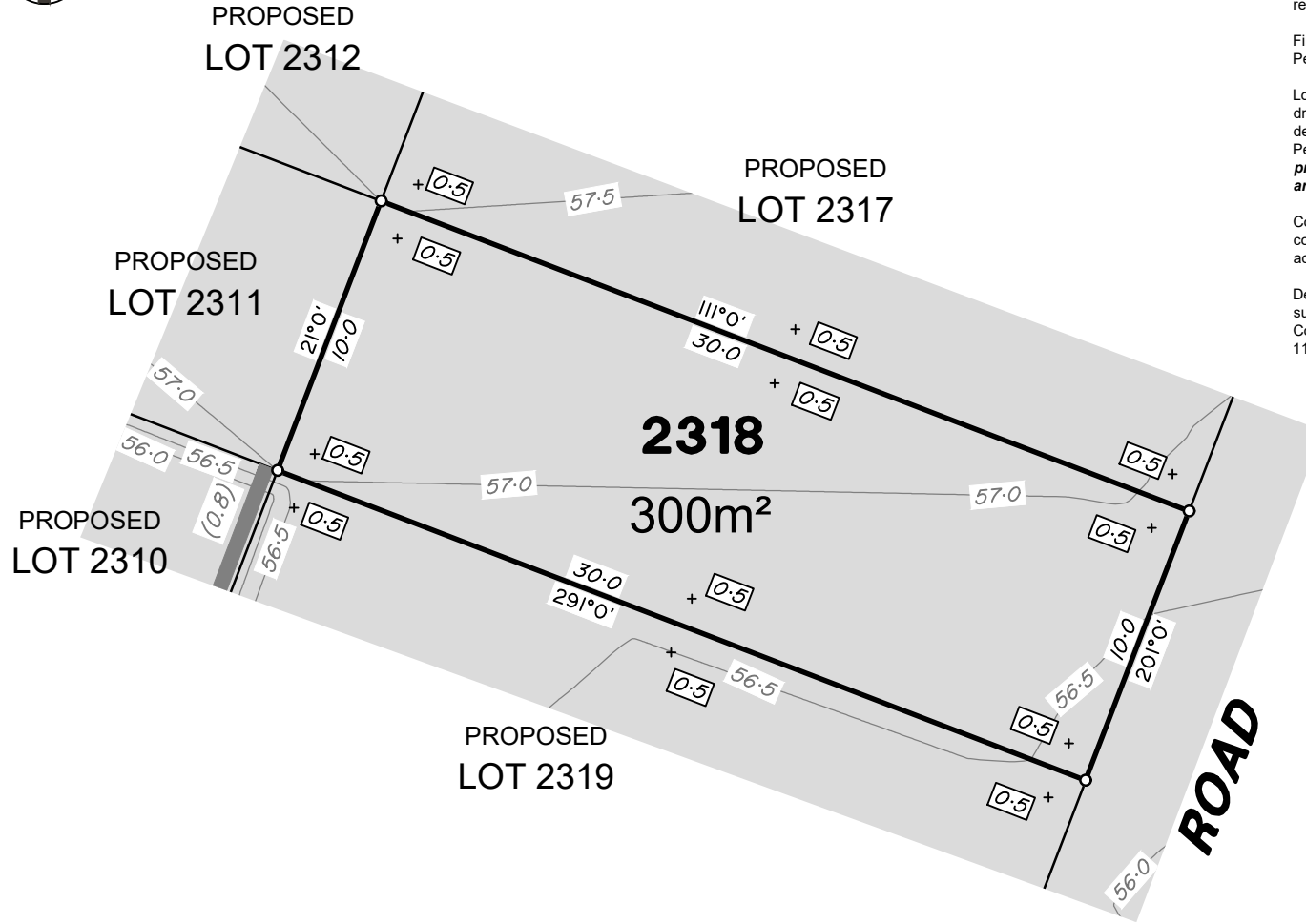
Depth of fill, in metres, shown as:- + 0.5

Retaining wall and retaining wall height, shown on the lower side of the wall, have been taken from plans supplied by Peak Urban and shown as: (1.2)

Bin Pad Location shown as:

150 mm SCALE BAR





**ADDITIONAL NOTES:**

The LOT dimensions and area shown hereon are subject to final field survey and also to the requirements of Council and any other authority which may have requirements under any relevant legislation

Final surface contours shown hereon have been supplied by Peak Urban.

Location of retaining walls are as shown on Engineering design drawings. Their as-constructed location may differ from their design location. Retaining wall heights have been supplied by Peak Urban. **The engineering detail shown hereon are preliminary only and are subject to change in final design and statutory approvals**

Compaction of any fill material placed on this site shall be completed to level one inspection and testing services in accordance with AS3798-2007.

Depth of fill values are calculated to the pre-development surface.

Copyright © Veris Australia Pty Ltd  
11/03/2022.

**FLAGSTONE  
PRECINCT 1 STAGE 5B(i)**  
For  
**PEET FLAGSTONE  
CITY PTY LTD**

**IMPORTANT NOTES:**  
(These notes are an integral part of this plan)

This plan has been prepared for **PEET FLAGSTONE CITY PTY LTD** for the purposes of **A Disclosure Plan Under the Land Sales Act 1984 (as amended)**.

It is not to be used by any other person or corporation or for any other purposes and is subject to the following limitations:

Please refer to the approved Development Application for conditions relating to the LOT and to approved Operational Works drawings for services location and possible easements.

**THESE DESIGNS AND DRAWINGS ARE COPYRIGHT AND ARE NOT TO BE USED OR REPRODUCED WITHOUT THE WRITTEN PERMISSION OF VERIS**

**Data Sources**  
Cadastral Boundaries  
30109-LC-Master(CW) FS94 2014.dwg  
Engineering Design  
FLAGSTONE - BASE - STAGE 5A 5B - DISCLOSURE INFO - 27 01 2022.dwg  
Final Surface Contours  
FLAGSTONE - BASE - STAGE 5A 5B - DISCLOSURE INFO - 27 01 2022.dwg  
Depth of Fill  
FLAGSTONE - DEPTH RANGE CONTOURS - STAGE 5A 5B - DISCLOSURE INFO - 27 01 2022.dwg

Issue	Revisions	Date	Drawn
A	Original	11.03.2022	BK

Locality: FLAGSTONE  
Local Authority: LOGAN CITY COUNCIL  
Horizontal Meridian: MGA, Zone 56  
Vertical Level Datum: AHD D  
Scale: 1:250 @ A4  
Designed: Peak Urban  
Drawn: BK 11/03/2022  
Checked: DE 11/03/2022  
Plot Date: 11 Mar, 2022  
Computer File Ref: 30109-St5Bi-DP-(A).dwg

**DISCLOSURE PLAN  
of Proposed LOT 2318**  
being part of  
Lot 911  
on SP321079



BRISBANE (07) 3686 4700 WHITSUNDAYS (07) 4945 6600

MACKAY (07) 4957 9700 CAIRNS (07) 4252 9400

veris.com.au  
ACN 615 735 727  
Veris Australia Pty Ltd

Drawing No 30109-DP- 2318 Issue A

**LEGEND**

Final surface contours based on A.H.D. datum at an interval of 0.5m, shown as: 15.5

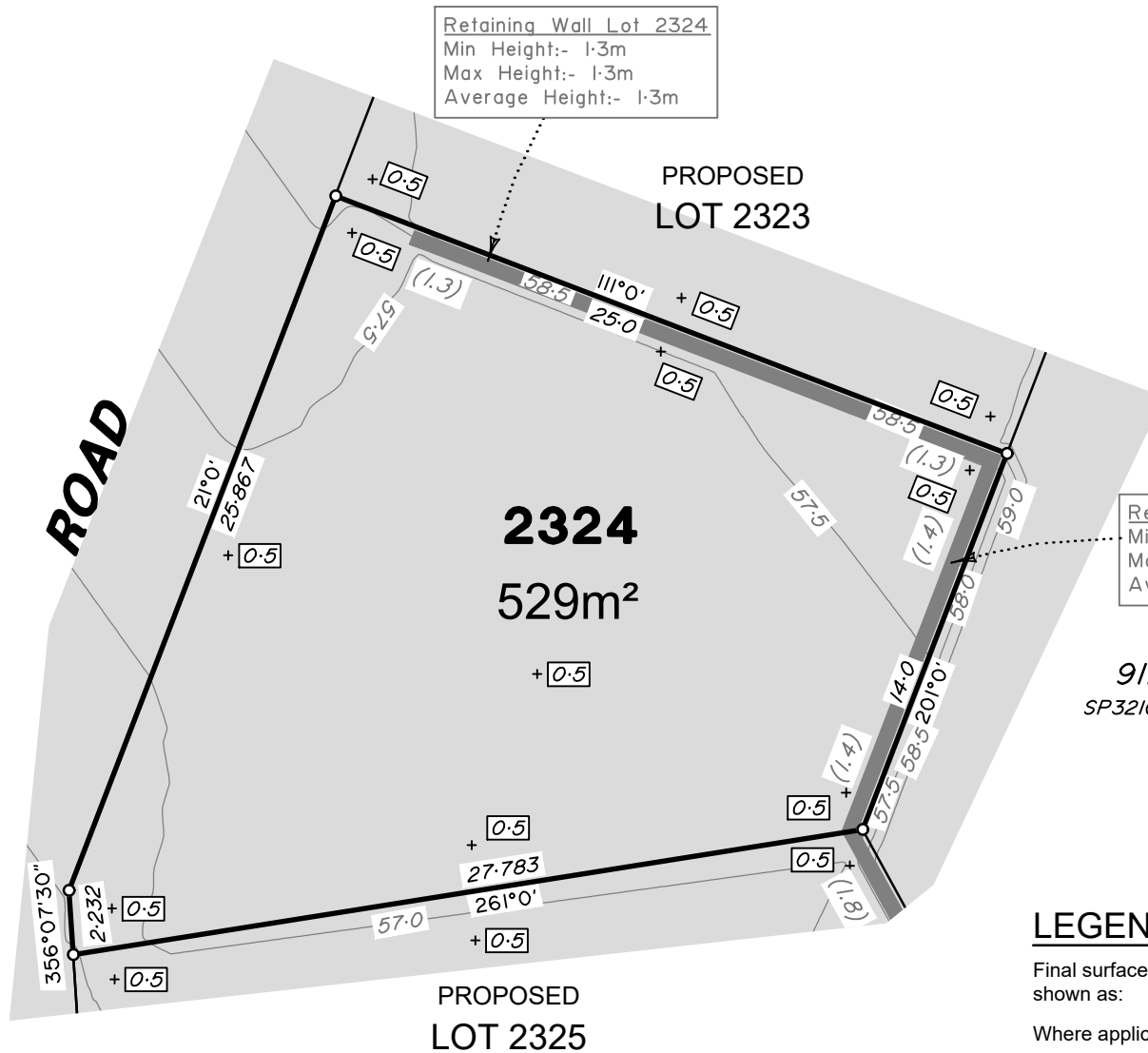
Where applicable, areas to be filled are shown as:

Depth of fill, in metres, shown as:- + 0.5

Retaining wall and retaining wall height, shown on the lower side of the wall, have been taken from plans supplied by Peak Urban and shown as: (1.2)

Bin Pad Location shown as:

0 12.5m 50 mm 25m 100 mm 150 mm SCALE BAR



**ADDITIONAL NOTES:**

The LOT dimensions and area shown hereon are subject to final field survey and also to the requirements of Council and any other authority which may have requirements under any relevant legislation

Final surface contours shown hereon have been supplied by Peak Urban.

Location of retaining walls are as shown on Engineering design drawings. Their as-constructed location may differ from their design location. Retaining wall heights have been supplied by Peak Urban. **The engineering detail shown hereon are preliminary only and are subject to change in final design and statutory approvals**

Compaction of any fill material placed on this site shall be completed to level one inspection and testing services in accordance with AS3798-2007.

Depth of fill values are calculated to the pre-development surface.

Copyright © Veris Australia Pty Ltd  
11/03/2022.

Retaining Wall Lot 2324  
 Min Height:- 1.4m  
 Max Height:- 1.4m  
 Average Height:- 1.4m

Retaining Wall Lot 2324  
 Min Height:- 1.3m  
 Max Height:- 1.3m  
 Average Height:- 1.3m

**LEGEND**

Final surface contours based on A.H.D. datum at an interval of 0.5m, shown as: — 15.5 —

Where applicable, areas to be filled are shown as:

Depth of fill, in metres, shown as:- +0.5

Retaining wall and retaining wall height, shown on the lower side of the wall, have been taken from plans supplied by Peak Urban and shown as:

(1.2)

Bin Pad Location shown as: \*

0 12.5m 25m 37.5m 150 mm SCALE BAR

**FLAGSTONE PRECINCT 1 STAGE 5B(i)**  
For  
**PEET FLAGSTONE CITY PTY LTD**

**IMPORTANT NOTES:**  
(These notes are an integral part of this plan)

This plan has been prepared for PEET FLAGSTONE CITY PTY LTD for the purposes of A Disclosure Plan Under the Land Sales Act 1984 (as amended).

It is not to be used by any other person or corporation or for any other purposes and is subject to the following limitations:

Please refer to the approved Development Application for conditions relating to the LOT and to approved Operational Works drawings for services location and possible easements.

THESE DESIGNS AND DRAWINGS ARE COPYRIGHT AND ARE NOT TO BE USED OR REPRODUCED WITHOUT THE WRITTEN PERMISSION OF VERIS

**Data Sources**  
 Cadastral Boundaries  
 30109-LC-Master(CW) FS94 2014.dwg  
 Engineering Design  
 FLAGSTONE - BASE - STAGE 5A 5B - DISCLOSURE INFO - 27 01 2022.dwg  
 Final Surface Contours  
 FLAGSTONE - BASE - STAGE 5A 5B - DISCLOSURE INFO - 27 01 2022.dwg  
 Depth of Fill  
 FLAGSTONE - DEPTH RANGE CONTOURS - STAGE 5A 5B - DISCLOSURE INFO - 27 01 2022.dwg

Issue	Revisions	Date	BK	Drawn
A	Original	11.03.2022		BK

Locality: FLAGSTONE  
 Local Authority: LOGAN CITY COUNCIL  
 Horizontal Meridian: MGA, Zone 56  
 Vertical Level Datum: AHD D  
 Scale: 1:250 @ A4  
 Designed: Peak Urban  
 Drawn: BK 11/03/2022  
 Checked: DE 11/03/2022  
 Plot Date: 11 Mar, 2022  
 Computer File Ref: 30109-St5B(i)-DP-(A).dwg

**DISCLOSURE PLAN**  
of Proposed LOT 2324  
being part of  
Lot 911  
on SP321079

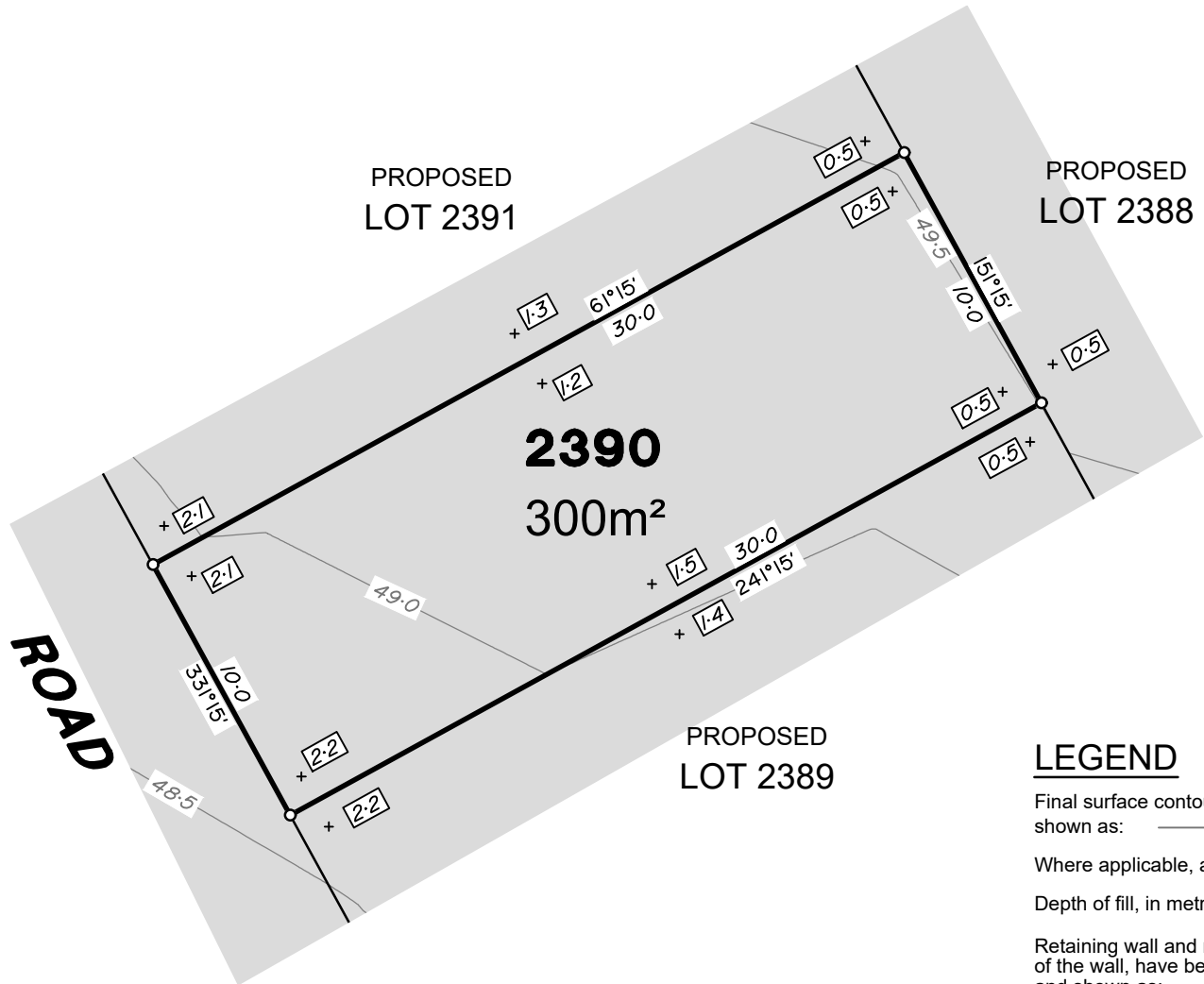


BRISBANE (07) 3668 4700 WHITSUNDAYS (07) 4945 6600

MACKAY (07) 4957 9700 CAIRNS (07) 4252 9400

veris.com.au  
ACN 615 735 727  
Veris Australia Pty Ltd

Drawing No 30109-DP- 2324 Issue A



**ADDITIONAL NOTES:**

The LOT dimensions and area shown hereon are subject to final field survey and also to the requirements of Council and any other authority which may have requirements under any relevant legislation

Final surface contours shown hereon have been supplied by Peak Urban.

Location of retaining walls are as shown on Engineering design drawings. Their as-constructed location may differ from their design location. Retaining wall heights have been supplied by Peak Urban. **The engineering detail shown hereon are preliminary only and are subject to change in final design and statutory approvals**

Compaction of any fill material placed on this site shall be completed to level one inspection and testing services in accordance with AS3798-2007.

Depth of fill values are calculated to the pre-development surface.  
Copyright © Veris Australia Pty Ltd  
11/03/2022.

PROPOSED LOT 2388

PROPOSED LOT 2391

**2390**  
300m<sup>2</sup>

PROPOSED LOT 2389

**LEGEND**

Final surface contours based on A.H.D. datum at an interval of 0.5m, shown as: 15.5

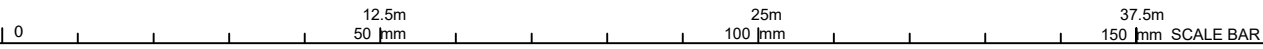
Where applicable, areas to be filled are shown as:

Depth of fill, in metres, shown as:- + 0.5

Retaining wall and retaining wall height, shown on the lower side of the wall, have been taken from plans supplied by Peak Urban and shown as: (1.2)

Bin Pad Location shown as:

**ROAD**



**FLAGSTONE PRECINCT 1 STAGE 5B(i)**  
For  
**PEET FLAGSTONE CITY PTY LTD**

**IMPORTANT NOTES:**  
(These notes are an integral part of this plan)

This plan has been prepared for PEET FLAGSTONE CITY PTY LTD for the purposes of a Disclosure Plan Under the Land Sales Act 1984 (as amended).

It is not to be used by any other person or corporation or for any other purposes and is subject to the following limitations:

Please refer to the approved Development Application for conditions relating to the LOT and to approved Operational Works drawings for services location and possible easements.

THESE DESIGNS AND DRAWINGS ARE COPYRIGHT AND ARE NOT TO BE USED OR REPRODUCED WITHOUT THE WRITTEN PERMISSION OF VERIS

**Data Sources**  
Cadastral Boundaries  
30109-LC-Master(CW) FS94 2014.dwg  
Engineering Design  
FLAGSTONE - BASE - STAGE 5A 5B - DISCLOSURE INFO - 27 01 2022.dwg  
Final Surface Contours  
FLAGSTONE - BASE - STAGE 5A 5B - DISCLOSURE INFO - 27 01 2022.dwg  
Depth of Fill  
FLAGSTONE - DEPTH RANGE CONTOURS - STAGE 5A 5B - DISCLOSURE INFO - 27 01 2022.dwg

Issue	Revisions	Date	BK	Drawn
A	Original	11.03.2022	BK	

Locality: FLAGSTONE  
Local Authority: LOGAN CITY COUNCIL  
Horizontal Meridian: MGA, Zone 56  
Vertical Level Datum: AHD D  
Scale: 1:250 @ A4  
Designed: Peak Urban  
Drawn: BK 11/03/2022  
Checked: DE 11/03/2022  
Plot Date: 11 Mar, 2022  
Computer File Ref: 30109-St5B-DP-(A).dwg

**DISCLOSURE PLAN**  
of Proposed LOT 2390  
being part of  
Lot 911  
on SP321079



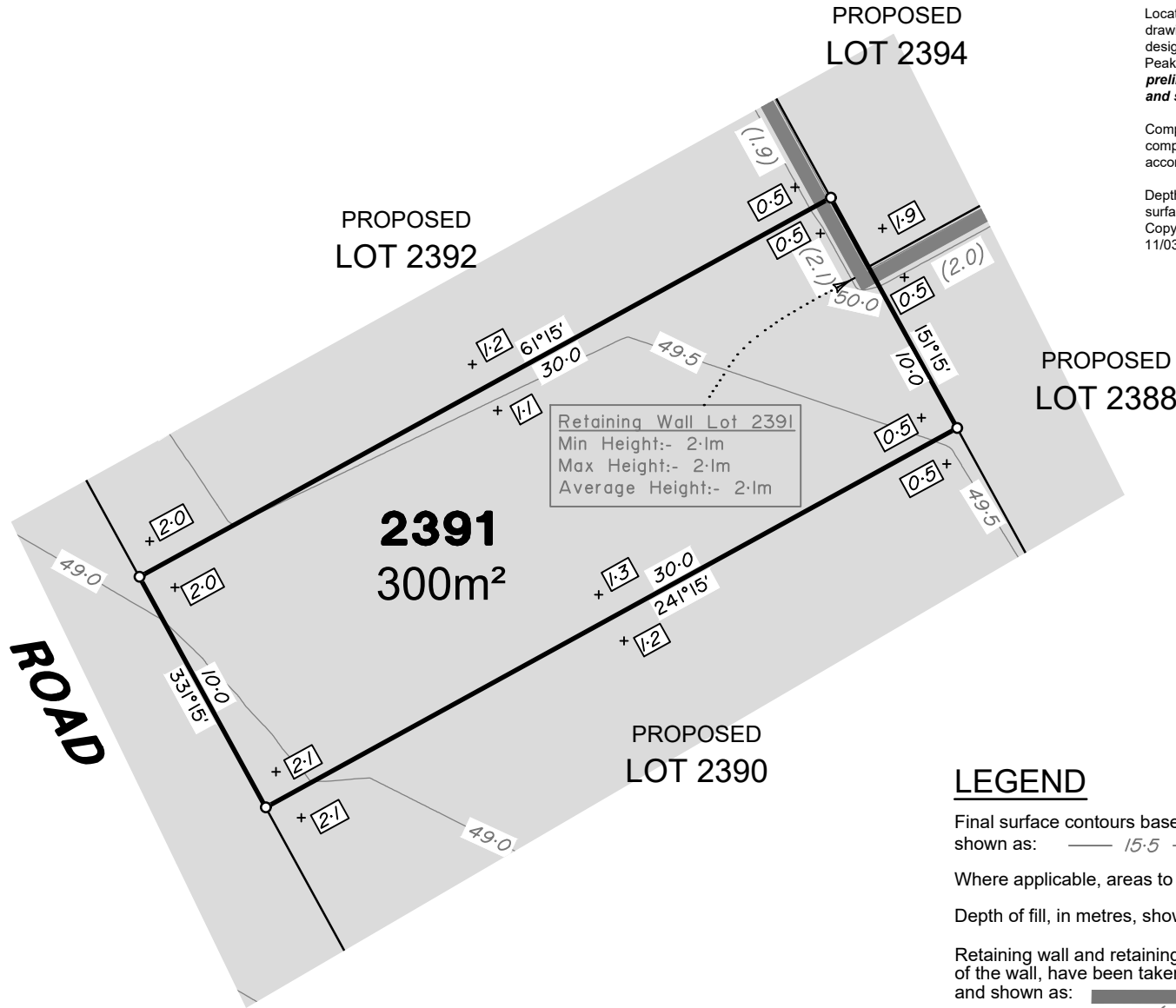
BRISBANE (07) 3688 4700 WHITSUNDAYS (07) 4945 6600

MACKAY (07) 4957 9700 CAIRNS (07) 4252 9400

veris.com.au  
ACN 615 735 727  
Veris Australia Pty Ltd

Drawing No  
**30109-DP- 2390**

Issue  
**A**



**ADDITIONAL NOTES:**

The LOT dimensions and area shown hereon are subject to final field survey and also to the requirements of Council and any other authority which may have requirements under any relevant legislation

Final surface contours shown hereon have been supplied by Peak Urban.

Location of retaining walls are as shown on Engineering design drawings. Their as-constructed location may differ from their design location. Retaining wall heights have been supplied by Peak Urban. **The engineering detail shown hereon are preliminary only and are subject to change in final design and statutory approvals**

Compaction of any fill material placed on this site shall be completed to level one inspection and testing services in accordance with AS3798-2007.

Depth of fill values are calculated to the pre-development surface.  
Copyright © Veris Australia Pty Ltd  
11/03/2022.

**FLAGSTONE  
PRECINCT 1 STAGE 5B(i)**  
For  
**PEET FLAGSTONE  
CITY PTY LTD**

**IMPORTANT NOTES:**  
(These notes are an integral part of this plan)

This plan has been prepared for **PEET FLAGSTONE CITY PTY LTD** for the purposes of **A Disclosure Plan Under the Land Sales Act 1984 (as amended)**.

It is not to be used by any other person or corporation or for any other purposes and is subject to the following limitations:

Please refer to the approved Development Application for conditions relating to the LOT and to approved Operational Works drawings for services location and possible easements.

**THESE DESIGNS AND DRAWINGS ARE COPYRIGHT AND ARE NOT TO BE USED OR REPRODUCED WITHOUT THE WRITTEN PERMISSION OF VERIS**

**Data Sources**  
Cadastral Boundaries  
30109-LC-Master(CW) FS94 2014.dwg  
Engineering Design  
FLAGSTONE - BASE - STAGE 5A 5B - DISCLOSURE INFO - 27 01 2022.dwg  
Final Surface Contours  
FLAGSTONE - BASE - STAGE 5A 5B - DISCLOSURE INFO - 27 01 2022.dwg  
Depth of Fill  
FLAGSTONE - DEPTH RANGE CONTOURS - STAGE 5A 5B - DISCLOSURE INFO - 27 01 2022.dwg

Issue	Revisions	Date	BK	Drawn
A	Original	11.03.2022		

Locality: FLAGSTONE  
Local Authority: LOGAN CITY COUNCIL  
Horizontal Meridian: MGA, Zone 56  
Vertical Level Datum: AHD D  
Scale: 1:250 @ A4  
Designed: Peak Urban  
Drawn: BK 11/03/2022  
Checked: DE 11/03/2022  
Plot Date: 11 Mar, 2022  
Computer File Ref: 30109-St5B-DP-(A).dwg

**DISCLOSURE PLAN**  
of Proposed LOT 2391  
being part of  
Lot 911  
on SP321079



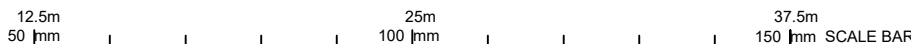
BRISBANE (07) 3688 4700 WHITSUNDAYS (07) 4945 6600

MACKAY (07) 4957 9700 CAIRNS (07) 4252 9400

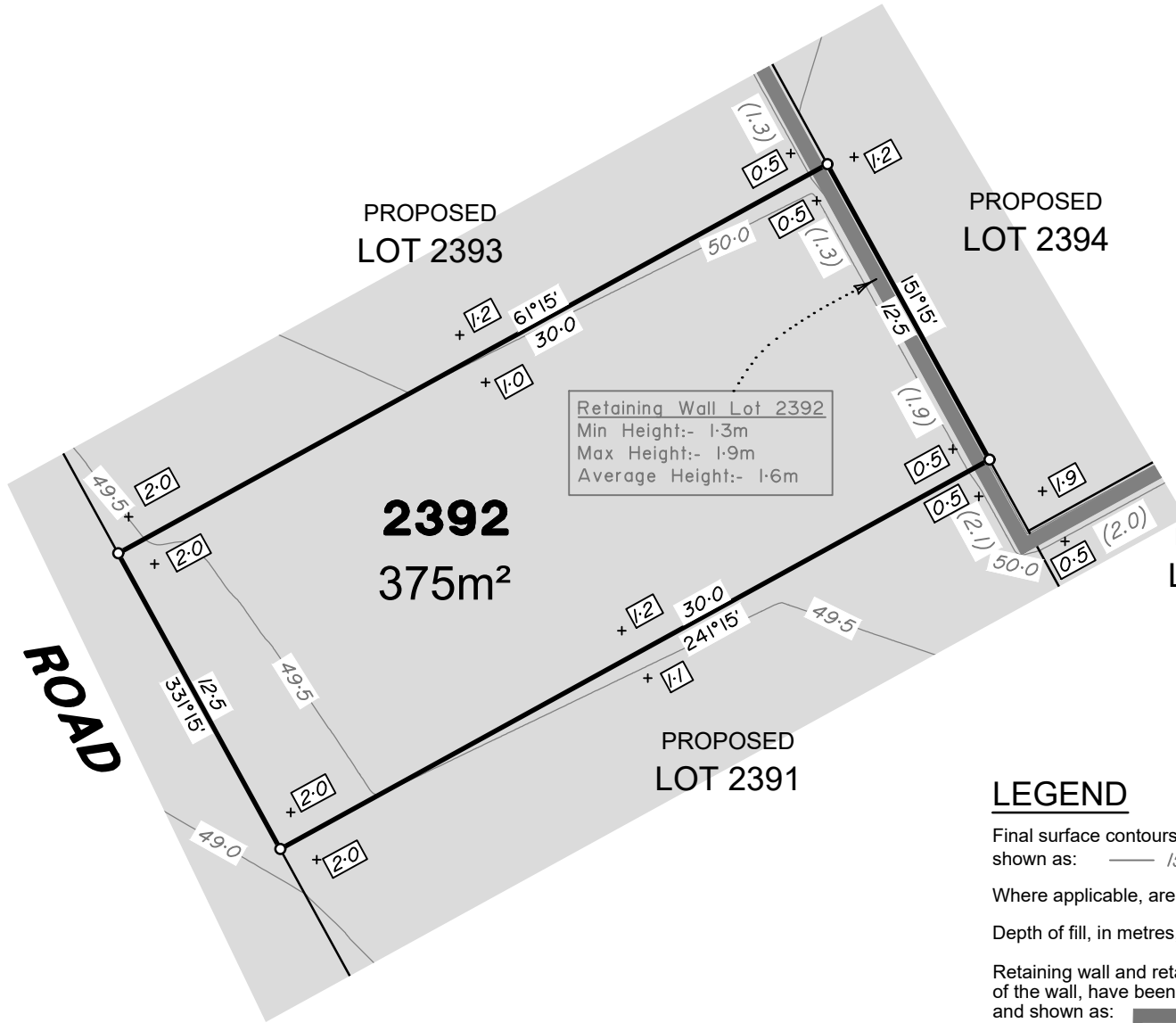
veris.com.au  
ACN 615 735 727  
Veris Australia Pty Ltd

Drawing No  
**30109-DP- 2391**

Issue  
**A**







**ADDITIONAL NOTES:**

The LOT dimensions and area shown hereon are subject to final field survey and also to the requirements of Council and any other authority which may have requirements under any relevant legislation

Final surface contours shown hereon have been supplied by Peak Urban.

Location of retaining walls are as shown on Engineering design drawings. Their as-constructed location may differ from their design location. Retaining wall heights have been supplied by Peak Urban. **The engineering detail shown hereon are preliminary only and are subject to change in final design and statutory approvals**

Compaction of any fill material placed on this site shall be completed to level one inspection and testing services in accordance with AS3798-2007.

Depth of fill values are calculated to the pre-development surface.

Copyright © Veris Australia Pty Ltd  
11/03/2022.

PROPOSED LOT 2394

PROPOSED LOT 2393

**2392**  
375m<sup>2</sup>

PROPOSED LOT 2388

PROPOSED LOT 2391

**LEGEND**

Final surface contours based on A.H.D. datum at an interval of 0.5m, shown as: 15.5

Where applicable, areas to be filled are shown as:

Depth of fill, in metres, shown as:- + 0.5

Retaining wall and retaining wall height, shown on the lower side of the wall, have been taken from plans supplied by Peak Urban and shown as: (1.2)

Bin Pad Location shown as:



**FLAGSTONE PRECINCT 1 STAGE 5B(i)**  
For  
**PEET FLAGSTONE CITY PTY LTD**

**IMPORTANT NOTES:**  
(These notes are an integral part of this plan)

This plan has been prepared for PEET FLAGSTONE CITY PTY LTD for the purposes of **A Disclosure Plan Under the Land Sales Act 1984 (as amended)**.

It is not to be used by any other person or corporation or for any other purposes and is subject to the following limitations:

Please refer to the approved Development Application for conditions relating to the LOT and to approved Operational Works drawings for services location and possible easements.

**THESE DESIGNS AND DRAWINGS ARE COPYRIGHT AND ARE NOT TO BE USED OR REPRODUCED WITHOUT THE WRITTEN PERMISSION OF VERIS**

**Data Sources**  
 Cadastral Boundaries  
 30109-LC-Master(CW) FS94 2014.dwg  
 Engineering Design  
 FLAGSTONE - BASE - STAGE 5A 5B - DISCLOSURE INFO - 27 01 2022.dwg  
 Final Surface Contours  
 FLAGSTONE - BASE - STAGE 5A 5B - DISCLOSURE INFO - 27 01 2022.dwg  
 Depth of Fill  
 FLAGSTONE - DEPTH RANGE CONTOURS - STAGE 5A 5B - DISCLOSURE INFO - 27 01 2022.dwg

Issue	Revisions	Date	Drawn
A	Original	11.03.2022	BK

Locality: FLAGSTONE  
 Local Authority: LOGAN CITY COUNCIL  
 Horizontal Meridian: MGA, Zone 56  
 Vertical Level Datum: AHD D  
 Scale: 1:250 @ A4  
 Designed: Peak Urban  
 Drawn: BK 11/03/2022  
 Checked: DE 11/03/2022  
 Plot Date: 11 Mar, 2022  
 Computer File Ref: 30109-St5B-DP-(A).dwg

**DISCLOSURE PLAN**  
of Proposed LOT 2392  
being part of  
Lot 911  
on SP321079

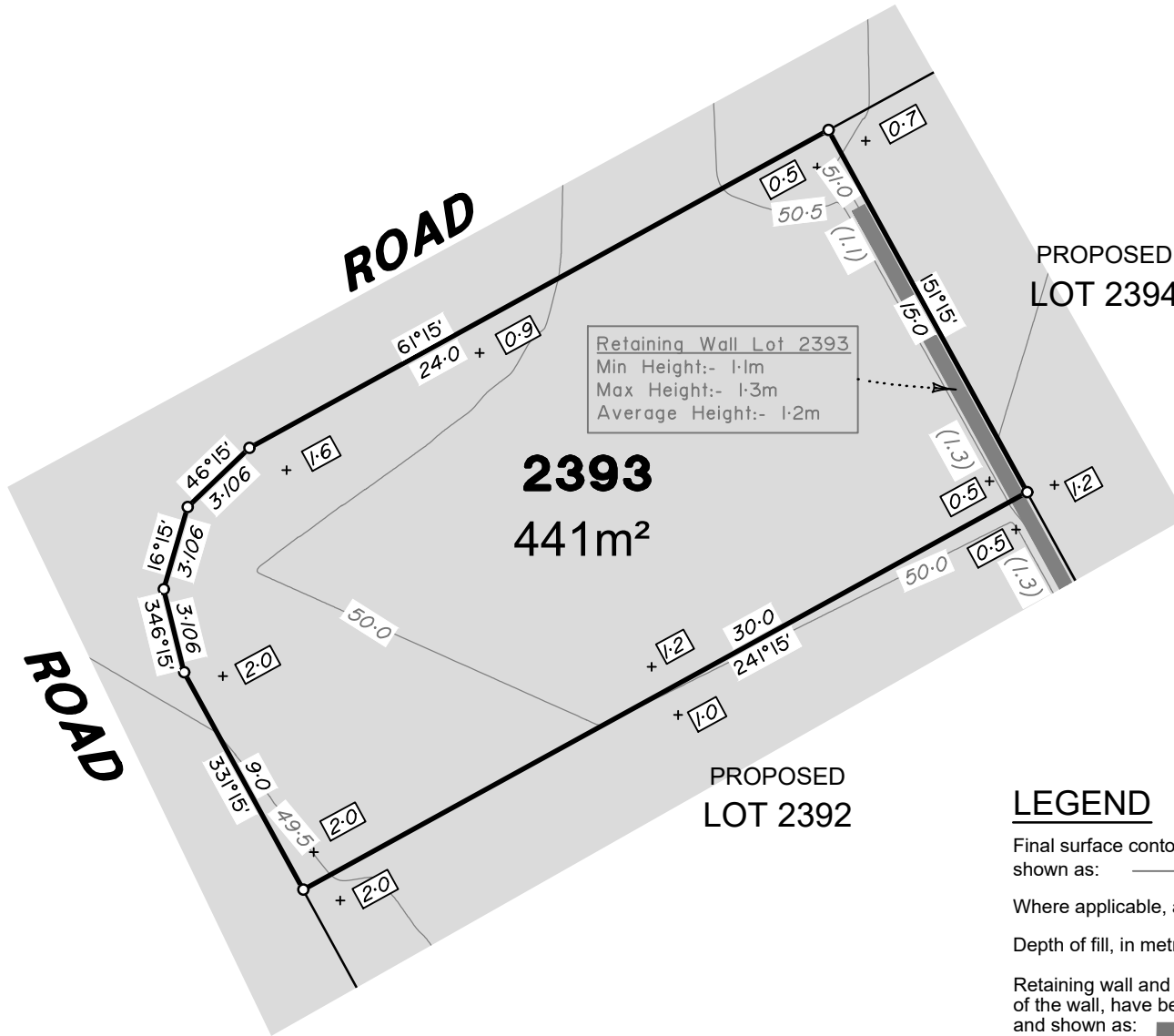


BRISBANE (07) 3688 4700 WHITSUNDAYS (07) 4945 6600

MACKAY (07) 4957 9700 CAIRNS (07) 4252 9400

veris.com.au  
ACN 615 735 727  
Veris Australia Pty Ltd

Drawing No 30109-DP- 2392 Issue A



Retaining Wall Lot 2393  
 Min Height:- 1.1m  
 Max Height:- 1.3m  
 Average Height:- 1.2m

**2393**  
 441m<sup>2</sup>

PROPOSED  
 LOT 2392

PROPOSED  
 LOT 2394

### LEGEND

Final surface contours based on A.H.D. datum at an interval of 0.5m, shown as: — 15.5 —

Where applicable, areas to be filled are shown as:

Depth of fill, in metres, shown as:- + 0.5

Retaining wall and retaining wall height, shown on the lower side of the wall, have been taken from plans supplied by Peak Urban and shown as:

Bin Pad Location shown as: \*

0 12.5m 50 mm 25m 100 mm 37.5m 150 mm SCALE BAR

#### ADDITIONAL NOTES:

The LOT dimensions and area shown hereon are subject to final field survey and also to the requirements of Council and any other authority which may have requirements under any relevant legislation

Final surface contours shown hereon have been supplied by Peak Urban.

Location of retaining walls are as shown on Engineering design drawings. Their as-constructed location may differ from their design location. Retaining wall heights have been supplied by Peak Urban. **The engineering detail shown hereon are preliminary only and are subject to change in final design and statutory approvals**

Compaction of any fill material placed on this site shall be completed to level one inspection and testing services in accordance with AS3798-2007.

Depth of fill values are calculated to the pre-development surface.

Copyright © Veris Australia Pty Ltd  
 11/03/2022.

## FLAGSTONE PRECINCT 1 STAGE 5B(i) For PEET FLAGSTONE CITY PTY LTD

### IMPORTANT NOTES:

(These notes are an integral part of this plan)

This plan has been prepared for PEET FLAGSTONE CITY PTY LTD for the purposes of a Disclosure Plan Under the Land Sales Act 1984 (as amended).

It is not to be used by any other person or corporation or for any other purposes and is subject to the following limitations:

Please refer to the approved Development Application for conditions relating to the LOT and to approved Operational Works drawings for services location and possible easements.

THESE DESIGNS AND DRAWINGS ARE COPYRIGHT AND ARE NOT TO BE USED OR REPRODUCED WITHOUT THE WRITTEN PERMISSION OF VERIS

**Data Sources**  
 Cadastral Boundaries  
 30109-LC-Master(CW) FS94 2014.dwg  
 Engineering Design  
 FLAGSTONE - BASE - STAGE 5A 5B - DISCLOSURE INFO - 27 01 2022.dwg  
 Final Surface Contours  
 FLAGSTONE - BASE - STAGE 5A 5B - DISCLOSURE INFO - 27 01 2022.dwg  
 Depth of Fill  
 FLAGSTONE - DEPTH RANGE CONTOURS - STAGE 5A 5B - DISCLOSURE INFO - 27 01 2022.dwg

Issue	Revisions	Date	BK	Drawn
A	Original	11.03.2022		

Locality: FLAGSTONE  
 Local Authority: LOGAN CITY COUNCIL  
 Horizontal Meridian: MGA, Zone 56  
 Vertical Level Datum: AHD D  
 Scale: 1:250 @ A4  
 Designed: Peak Urban  
 Drawn: BK 11/03/2022  
 Checked: DE 11/03/2022  
 Plot Date: 11 Mar, 2022  
 Computer File Ref: 30109-St5Bi-DP-(A).dwg

### DISCLOSURE PLAN of Proposed LOT 2393 being part of Lot 911 on SP321079



BRISBANE (07) 3688 4700 WHITSUNDAYS (07) 4945 6600

MACKAY (07) 4957 9700 CAIRNS (07) 4252 9400

veris.com.au  
 ACN 615 735 727  
 Veris Australia Pty Ltd

Drawing No 30109-DP- 2393 Issue A



**ROAD**

Retaining Wall Lot 2393  
Min Height:- 1.1m  
Max Height:- 1.3m  
Average Height:- 1.2m

PROPOSED  
LOT 2393

Retaining Wall Lot 2392  
Min Height:- 1.3m  
Max Height:- 1.9m  
Average Height:- 1.6m

PROPOSED  
LOT 2392

Retaining Wall Lot 2391  
Min Height:- 2.1m  
Max Height:- 2.1m  
Average Height:- 2.1m

PROPOSED  
LOT 2391

Retaining Wall Lot 2388  
Min Height:- 2.0m  
Max Height:- 2.0m  
Average Height:- 2.0m

PROPOSED  
LOT 2388

PROPOSED  
LOT 2395

**2394**  
305m<sup>2</sup>

PROPOSED  
LOT 2387

### LEGEND

Final surface contours based on A.H.D. datum at an interval of 0.5m, shown as: — 15.5 —

Where applicable, areas to be filled are shown as:

Depth of fill, in metres, shown as:- + 0.5

Retaining wall and retaining wall height, shown on the lower side of the wall, have been taken from plans supplied by Peak Urban and shown as:

Bin Pad Location shown as: \*

### ADDITIONAL NOTES:

The LOT dimensions and area shown hereon are subject to final field survey and also to the requirements of Council and any other authority which may have requirements under any relevant legislation

Final surface contours shown hereon have been supplied by Peak Urban.

Location of retaining walls are as shown on Engineering design drawings. Their as-constructed location may differ from their design location. Retaining wall heights have been supplied by Peak Urban. **The engineering detail shown hereon are preliminary only and are subject to change in final design and statutory approvals**

Compaction of any fill material placed on this site shall be completed to level one inspection and testing services in accordance with AS3798-2007.

Depth of fill values are calculated to the pre-development surface.  
Copyright © Veris Australia Pty Ltd  
11/03/2022.

**FLAGSTONE  
PRECINCT 1 STAGE 5B(i)**  
For  
**PEET FLAGSTONE  
CITY PTY LTD**

**IMPORTANT NOTES:**  
(These notes are an integral part of this plan)

This plan has been prepared for **PEET FLAGSTONE CITY PTY LTD** for the purposes of **A Disclosure Plan Under the Land Sales Act 1984 (as amended)**.

It is not to be used by any other person or corporation or for any other purposes and is subject to the following limitations:

Please refer to the approved Development Application for conditions relating to the LOT and to approved Operational Works drawings for services location and possible easements.

**THESE DESIGNS AND DRAWINGS ARE COPYRIGHT AND ARE NOT TO BE USED OR REPRODUCED WITHOUT THE WRITTEN PERMISSION OF VERIS**

**Data Sources**  
Cadastral Boundaries  
30109-LC-Master(CW) FS94 2014.dwg  
Engineering Design  
FLAGSTONE - BASE - STAGE 5A 5B - DISCLOSURE INFO - 27 01 2022.dwg  
Final Surface Contours  
FLAGSTONE - BASE - STAGE 5A 5B - DISCLOSURE INFO - 27 01 2022.dwg  
Depth of Fill  
FLAGSTONE - DEPTH RANGE CONTOURS - STAGE 5A 5B - DISCLOSURE INFO - 27 01 2022.dwg

Issue	Revisions	Date	Drawn
A	Original	11.03.2022	BK

Locality: FLAGSTONE  
Local Authority: LOGAN CITY COUNCIL  
Horizontal Meridian: MGA, Zone 56  
Vertical Level Datum: AHD D  
Scale: 1:250 @ A4  
Designed: Peak Urban  
Drawn: BK 11/03/2022  
Checked: DE 11/03/2022  
Plot Date: 11 Mar, 2022  
Computer File Ref: 30109-St5B-DP-(A).dwg

**DISCLOSURE PLAN**  
of Proposed LOT 2394  
being part of  
Lot 911  
on SP321079



**veris**

BRISBANE (07) 3688 4700 WHITSUNDAYS (07) 4945 6600

MACKAY (07) 4957 9700 CAIRNS (07) 4252 9400

veris.com.au  
ACN 615 735 727  
Veris Australia Pty Ltd

Drawing No 30109-DP- 2394 Issue A





**ROAD**

PROPOSED LOT 2394

PROPOSED LOT 2396

**2395**  
381m<sup>2</sup>

PROPOSED LOT 2386

PROPOSED LOT 2387

PROPOSED LOT 2388

Retaining Wall Lot 2395  
Min Height:- 1.0m  
Max Height:- 1.0m  
Average Height:- 1.0m

Retaining Wall Lot 2387  
Min Height:- 2.0m  
Max Height:- 2.0m  
Average Height:- 2.0m

**ADDITIONAL NOTES:**

The LOT dimensions and area shown hereon are subject to final field survey and also to the requirements of Council and any other authority which may have requirements under any relevant legislation

Final surface contours shown hereon have been supplied by Peak Urban.

Location of retaining walls are as shown on Engineering design drawings. Their as-constructed location may differ from their design location. Retaining wall heights have been supplied by Peak Urban. **The engineering detail shown hereon are preliminary only and are subject to change in final design and statutory approvals**

Compaction of any fill material placed on this site shall be completed to level one inspection and testing services in accordance with AS3798-2007.

Depth of fill values are calculated to the pre-development surface.  
Copyright © Veris Australia Pty Ltd  
11/03/2022.

**FLAGSTONE  
PRECINCT 1 STAGE 5B(i)**  
For  
**PEET FLAGSTONE  
CITY PTY LTD**

**IMPORTANT NOTES:**  
(These notes are an integral part of this plan)

This plan has been prepared for PEET FLAGSTONE CITY PTY LTD for the purposes of **A Disclosure Plan Under the Land Sales Act 1984 (as amended)**.

It is not to be used by any other person or corporation or for any other purposes and is subject to the following limitations:

Please refer to the approved Development Application for conditions relating to the LOT and to approved Operational Works drawings for services location and possible easements.

**THESE DESIGNS AND DRAWINGS ARE COPYRIGHT AND ARE NOT TO BE USED OR REPRODUCED WITHOUT THE WRITTEN PERMISSION OF VERIS**

**Data Sources**  
Cadastral Boundaries  
30109-LC-Master(CW) FS94 2014.dwg  
Engineering Design  
FLAGSTONE - BASE - STAGE 5A 5B - DISCLOSURE INFO - 27 01 2022.dwg  
Final Surface Contours  
FLAGSTONE - BASE - STAGE 5A 5B - DISCLOSURE INFO - 27 01 2022.dwg  
Depth of Fill  
FLAGSTONE - DEPTH RANGE CONTOURS - STAGE 5A 5B - DISCLOSURE INFO - 27 01 2022.dwg

Issue	Revisions	Date	BK	Drawn
A	Original	11.03.2022		

Locality: FLAGSTONE  
Local Authority: LOGAN CITY COUNCIL  
Horizontal Meridian: MGA, Zone 56  
Vertical Level Datum: AHD D  
Scale: 1:250 @ A4  
Designed: Peak Urban  
Drawn: BK 11/03/2022  
Checked: DE 11/03/2022  
Plot Date: 11 Mar, 2022  
Computer File Ref: 30109-St5B-DP-(A).dwg

**DISCLOSURE PLAN  
of Proposed LOT 2395**  
being part of  
Lot 911  
on SP321079



BRISBANE (07) 3688 4700 WHITSUNDAYS (07) 4945 6600  
MACKAY (07) 4957 9700 CAIRNS (07) 4252 9400

veris.com.au  
ACN 615 735 727  
Veris Australia Pty Ltd

Drawing No 30109-DP- 2395 Issue A

**LEGEND**

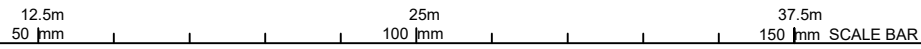
Final surface contours based on A.H.D. datum at an interval of 0.5m, shown as: — 15.5 —

Where applicable, areas to be filled are shown as:

Depth of fill, in metres, shown as:- + 0.5

Retaining wall and retaining wall height, shown on the lower side of the wall, have been taken from plans supplied by Peak Urban and shown as:

Bin Pad Location shown as: \*





**ROAD**

PROPOSED  
**LOT 2397**

**2396**  
427m<sup>2</sup>

PROPOSED  
**LOT 2395**

PROPOSED  
**LOT 2385**

PROPOSED  
**LOT 2386**

PROPOSED  
**LOT 2387**

**ADDITIONAL NOTES:**

The LOT dimensions and area shown hereon are subject to final field survey and also to the requirements of Council and any other authority which may have requirements under any relevant legislation

Final surface contours shown hereon have been supplied by Peak Urban.

Location of retaining walls are as shown on Engineering design drawings. Their as-constructed location may differ from their design location. Retaining wall heights have been supplied by Peak Urban. **The engineering detail shown hereon are preliminary only and are subject to change in final design and statutory approvals**

Compaction of any fill material placed on this site shall be completed to level one inspection and testing services in accordance with AS3798-2007.

Depth of fill values are calculated to the pre-development surface.  
Copyright © Veris Australia Pty Ltd  
11/03/2022.

**FLAGSTONE  
PRECINCT 1 STAGE 5B(i)**  
For  
**PEET FLAGSTONE  
CITY PTY LTD**

**IMPORTANT NOTES:**  
(These notes are an integral part of this plan)

This plan has been prepared for **PEET FLAGSTONE CITY PTY LTD** for the purposes of **A Disclosure Plan Under the Land Sales Act 1984 (as amended)**.

It is not to be used by any other person or corporation or for any other purposes and is subject to the following limitations:

Please refer to the approved Development Application for conditions relating to the LOT and to approved Operational Works drawings for services location and possible easements.

**THESE DESIGNS AND DRAWINGS ARE COPYRIGHT AND ARE NOT TO BE USED OR REPRODUCED WITHOUT THE WRITTEN PERMISSION OF VERIS**

**Data Sources**  
Cadastral Boundaries  
30109-LC-Master(CW) FS94 2014.dwg  
Engineering Design  
FLAGSTONE - BASE - STAGE 5A 5B - DISCLOSURE INFO - 27 01 2022.dwg  
Final Surface Contours  
FLAGSTONE - BASE - STAGE 5A 5B - DISCLOSURE INFO - 27 01 2022.dwg  
Depth of Fill  
FLAGSTONE - DEPTH RANGE CONTOURS - STAGE 5A 5B - DISCLOSURE INFO - 27 01 2022.dwg

Issue	Revisions	Date	Drawn
A	Original	11.03.2022	BK

Locality: FLAGSTONE  
Local Authority: LOGAN CITY COUNCIL  
Horizontal Meridian: MGA, Zone 56  
Vertical Level Datum: AHD D  
Scale: 1:250 @ A4  
Designed: Peak Urban  
Drawn: BK 11/03/2022  
Checked: DE 11/03/2022  
Plot Date: 11 Mar, 2022  
Computer File Ref: 30109-St5B-DP-(A).dwg

**DISCLOSURE PLAN**  
of Proposed **LOT 2396**  
being part of  
**Lot 911**  
on **SP321079**



**veris**

BRISBANE (07) 3688 4700 WHITSUNDAYS (07) 4945 6600

MACKAY (07) 4957 9700 CAIRNS (07) 4252 9400

veris.com.au  
ACN 615 735 727  
Veris Australia Pty Ltd

Drawing No **30109-DP- 2396** Issue **A**

Retaining Wall Lot 2395  
Min Height:- 1.0m  
Max Height:- 1.0m  
Average Height:- 1.0m

Retaining Wall Lot 2386  
Min Height:- 2.2m  
Max Height:- 2.3m  
Average Height:- 2.25m

**LEGEND**

Final surface contours based on A.H.D. datum at an interval of 0.5m, shown as: 15.5

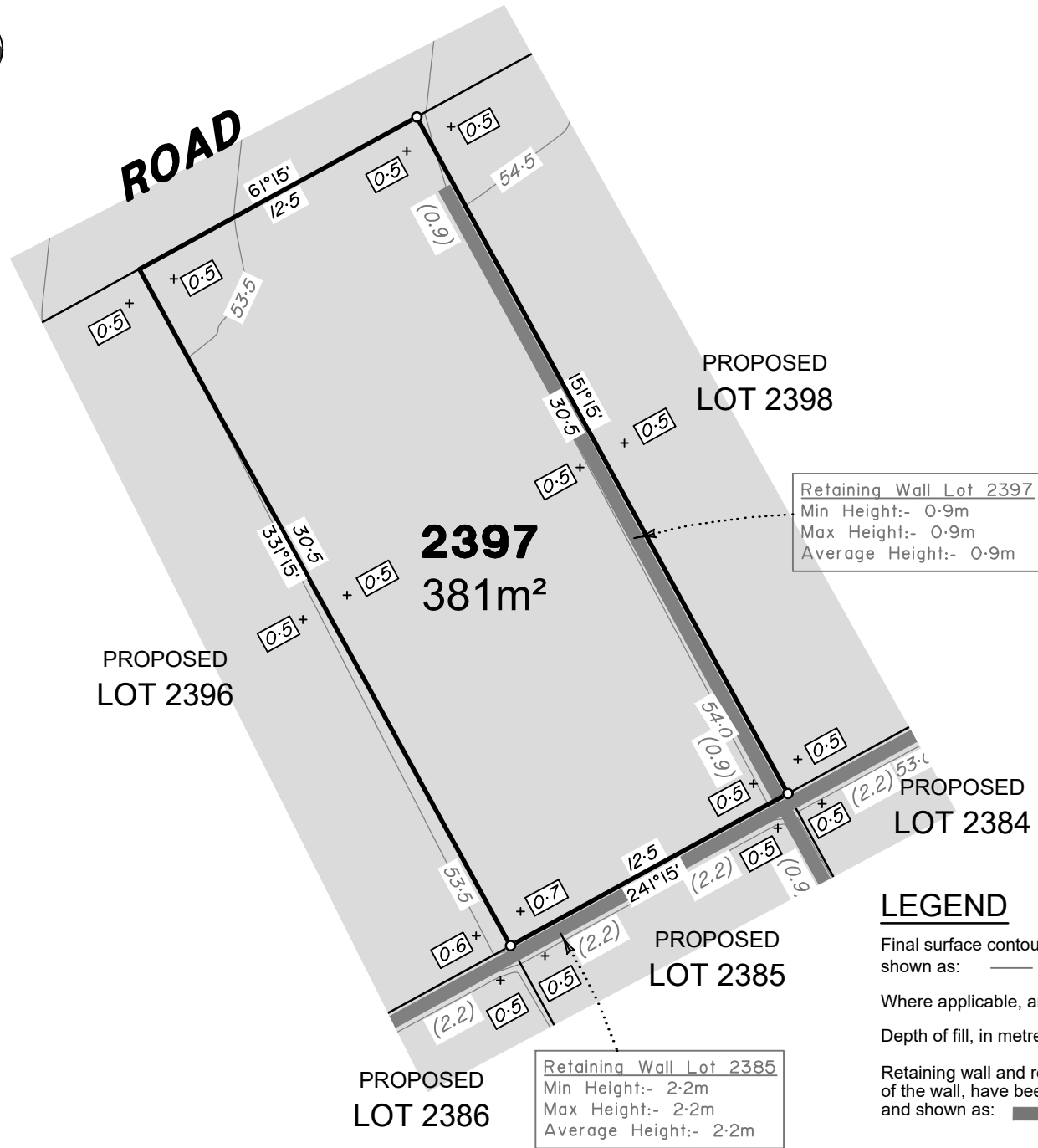
Where applicable, areas to be filled are shown as:

Depth of fill, in metres, shown as:- + 0.5

Retaining wall and retaining wall height, shown on the lower side of the wall, have been taken from plans supplied by Peak Urban and shown as: (1.2)

Bin Pad Location shown as:



**ADDITIONAL NOTES:**

The LOT dimensions and area shown hereon are subject to final field survey and also to the requirements of Council and any other authority which may have requirements under any relevant legislation

Final surface contours shown hereon have been supplied by Peak Urban.

Location of retaining walls are as shown on Engineering design drawings. Their as-constructed location may differ from their design location. Retaining wall heights have been supplied by Peak Urban. **The engineering detail shown hereon are preliminary only and are subject to change in final design and statutory approvals**

Compaction of any fill material placed on this site shall be completed to level one inspection and testing services in accordance with AS3798-2007.

Depth of fill values are calculated to the pre-development surface.  
Copyright © Veris Australia Pty Ltd  
11/03/2022.

**FLAGSTONE  
PRECINCT 1 STAGE 5B(i)**  
For  
**PEET FLAGSTONE  
CITY PTY LTD**

**IMPORTANT NOTES:**  
(These notes are an integral part of this plan)

This plan has been prepared for **PEET FLAGSTONE CITY PTY LTD** for the purposes of **A Disclosure Plan Under the Land Sales Act 1984 (as amended)**.

It is not to be used by any other person or corporation or for any other purposes and is subject to the following limitations:

Please refer to the approved Development Application for conditions relating to the LOT and to approved Operational Works drawings for services location and possible easements.

**THESE DESIGNS AND DRAWINGS ARE COPYRIGHT AND ARE NOT TO BE USED OR REPRODUCED WITHOUT THE WRITTEN PERMISSION OF VERIS**

**Data Sources**  
Cadastral Boundaries  
30109-LC-Master(CW) FS94 2014.dwg  
Engineering Design  
FLAGSTONE - BASE - STAGE 5A 5B - DISCLOSURE INFO - 27 01 2022.dwg  
Final Surface Contours  
FLAGSTONE - BASE - STAGE 5A 5B - DISCLOSURE INFO - 27 01 2022.dwg  
Depth of Fill  
FLAGSTONE - DEPTH RANGE CONTOURS - STAGE 5A 5B - DISCLOSURE INFO - 27 01 2022.dwg

Issue	Revisions	Date	BK	Drawn
A	Original	11.03.2022		BK

Locality: FLAGSTONE  
Local Authority: LOGAN CITY COUNCIL  
Horizontal Meridian: MGA, Zone 56  
Vertical Level Datum: AHD D  
Scale: 1:250 @ A4  
Designed: Peak Urban  
Drawn: BK 11/03/2022  
Checked: DE 11/03/2022  
Plot Date: 11 Mar, 2022  
Computer File Ref: 30109-St5B-DP-(A).dwg

**DISCLOSURE PLAN  
of Proposed LOT 2397**  
being part of  
Lot 911  
on SP321079



BRISBANE (07) 3688 4700 WHITSUNDAYS (07) 4945 6600

MACKAY (07) 4957 9700 CAIRNS (07) 4252 9400

veris.com.au  
ACN 615 735 727  
Veris Australia Pty Ltd

Drawing No 30109-DP- 2397 Issue A

**LEGEND**

Final surface contours based on A.H.D. datum at an interval of 0.5m, shown as: 15.5

Where applicable, areas to be filled are shown as:

Depth of fill, in metres, shown as:-

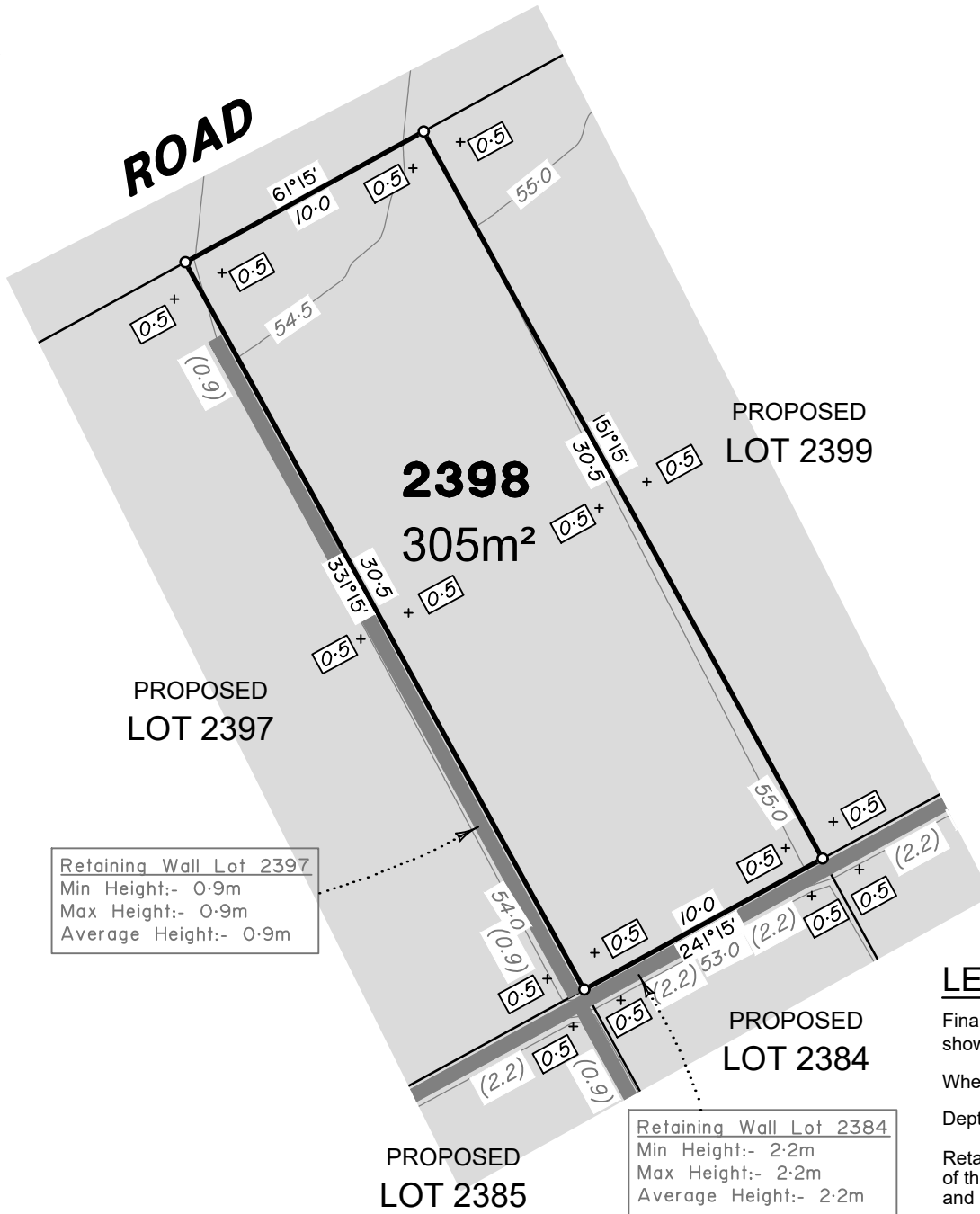
Retaining wall and retaining wall height, shown on the lower side of the wall, have been taken from plans supplied by Peak Urban and shown as:

Bin Pad Location shown as:





ROAD



Retaining Wall Lot 2397  
 Min Height:- 0.9m  
 Max Height:- 0.9m  
 Average Height:- 0.9m

Retaining Wall Lot 2384  
 Min Height:- 2.2m  
 Max Height:- 2.2m  
 Average Height:- 2.2m

PROPOSED LOT 2385

PROPOSED LOT 2384

PROPOSED LOT 2383

PROPOSED LOT 2399

2398  
305m<sup>2</sup>

PROPOSED LOT 2397

**ADDITIONAL NOTES:**

The LOT dimensions and area shown hereon are subject to final field survey and also to the requirements of Council and any other authority which may have requirements under any relevant legislation

Final surface contours shown hereon have been supplied by Peak Urban.

Location of retaining walls are as shown on Engineering design drawings. Their as-constructed location may differ from their design location. Retaining wall heights have been supplied by Peak Urban. *The engineering detail shown hereon are preliminary only and are subject to change in final design and statutory approvals*

Compaction of any fill material placed on this site shall be completed to level one inspection and testing services in accordance with AS3798-2007.

Depth of fill values are calculated to the pre-development surface.  
Copyright © Veris Australia Pty Ltd  
11/03/2022.

**FLAGSTONE  
PRECINCT 1 STAGE 5B(i)**  
For  
**PEET FLAGSTONE  
CITY PTY LTD**

**IMPORTANT NOTES:**  
(These notes are an integral part of this plan)

This plan has been prepared for PEET FLAGSTONE CITY PTY LTD for the purposes of a Disclosure Plan Under the Land Sales Act 1984 (as amended).

It is not to be used by any other person or corporation or for any other purposes and is subject to the following limitations:

Please refer to the approved Development Application for conditions relating to the LOT and to approved Operational Works drawings for services location and possible easements.

THESE DESIGNS AND DRAWINGS ARE COPYRIGHT AND ARE NOT TO BE USED OR REPRODUCED WITHOUT THE WRITTEN PERMISSION OF VERIS

- Data Sources**
- Cadastral Boundaries  
30109-LC-Master(CW) FS94 2014.dwg
  - Engineering Design  
FLAGSTONE - BASE - STAGE 5A 5B - DISCLOSURE INFO - 27 01 2022.dwg
  - Final Surface Contours  
FLAGSTONE - BASE - STAGE 5A 5B - DISCLOSURE INFO - 27 01 2022.dwg
  - Depth of Fill  
FLAGSTONE - DEPTH RANGE CONTOURS - STAGE 5A 5B - DISCLOSURE INFO - 27 01 2022.dwg

Issue	Revisions	Date	BK	Drawn
A	Original	11.03.2022		BK

Locality: FLAGSTONE  
 Local Authority: LOGAN CITY COUNCIL  
 Horizontal Meridian: MGA, Zone 56  
 Vertical Level Datum: AHD D  
 Scale: 1:250 @ A4  
 Designed: Peak Urban  
 Drawn: BK 11/03/2022  
 Checked: DE 11/03/2022  
 Plot Date: 11 Mar, 2022  
 Computer File Ref: 30109-St5B(i)-DP-(A).dwg

**DISCLOSURE PLAN  
of Proposed LOT 2398**  
being part of  
Lot 911  
on SP321079



BRISBANE (07) 3688 4700 WHITSUNDAYS (07) 4945 6600  
 MACKAY (07) 4957 9700 CAIRNS (07) 4252 9400  
 veris.com.au  
 ACN 615 735 727  
 Veris Australia Pty Ltd

Drawing No 30109-DP- 2398 Issue A

**LEGEND**

Final surface contours based on A.H.D. datum at an interval of 0.5m, shown as: — 15.5 —

Where applicable, areas to be filled are shown as:

Depth of fill, in metres, shown as:- +0.5

Retaining wall and retaining wall height, shown on the lower side of the wall, have been taken from plans supplied by Peak Urban and shown as: (1.2)

Bin Pad Location shown as: \*

12.5m 25m 37.5m  
50 mm 100 mm 150 mm SCALE BAR



**ROAD**

PROPOSED LOT 2398

**2399**  
305m<sup>2</sup>

PROPOSED LOT 2400

PROPOSED LOT 2382

PROPOSED LOT 2383

PROPOSED LOT 2384

Retaining Wall Lot 2383  
Min Height:- 2.2m  
Max Height:- 2.2m  
Average Height:- 2.2m

**ADDITIONAL NOTES:**

The LOT dimensions and area shown hereon are subject to final field survey and also to the requirements of Council and any other authority which may have requirements under any relevant legislation

Final surface contours shown hereon have been supplied by Peak Urban.

Location of retaining walls are as shown on Engineering design drawings. Their as-constructed location may differ from their design location. Retaining wall heights have been supplied by Peak Urban. **The engineering detail shown hereon are preliminary only and are subject to change in final design and statutory approvals**

Compaction of any fill material placed on this site shall be completed to level one inspection and testing services in accordance with AS3798-2007.

Depth of fill values are calculated to the pre-development surface.  
Copyright © Veris Australia Pty Ltd  
11/03/2022.

**FLAGSTONE  
PRECINCT 1 STAGE 5B(i)**  
For  
**PEET FLAGSTONE  
CITY PTY LTD**

**IMPORTANT NOTES:**  
(These notes are an integral part of this plan)

This plan has been prepared for **PEET FLAGSTONE CITY PTY LTD** for the purposes of **A Disclosure Plan Under the Land Sales Act 1984 (as amended)**.

It is not to be used by any other person or corporation or for any other purposes and is subject to the following limitations:

Please refer to the approved Development Application for conditions relating to the LOT and to approved Operational Works drawings for services location and possible easements.

**THESE DESIGNS AND DRAWINGS ARE COPYRIGHT AND ARE NOT TO BE USED OR REPRODUCED WITHOUT THE WRITTEN PERMISSION OF VERIS**

**Data Sources**  
Cadastral Boundaries  
30109-LC-Master(CW) FS94 2014.dwg  
Engineering Design  
FLAGSTONE - BASE - STAGE 5A 5B - DISCLOSURE INFO - 27 01 2022.dwg  
Final Surface Contours  
FLAGSTONE - BASE - STAGE 5A 5B - DISCLOSURE INFO - 27 01 2022.dwg  
Depth of Fill  
FLAGSTONE - DEPTH RANGE CONTOURS - STAGE 5A 5B - DISCLOSURE INFO - 27 01 2022.dwg

Issue	Revisions	Date	BK	Drawn
A	Original	11.03.2022		BK

Locality: FLAGSTONE  
Local Authority: LOGAN CITY COUNCIL  
Horizontal Meridian: MGA, Zone 56  
Vertical Level Datum: AHD D  
Scale: 1:250 @ A4  
Designed: Peak Urban  
Drawn: BK 11/03/2022  
Checked: DE 11/03/2022  
Plot Date: 11 Mar, 2022  
Computer File Ref: 30109-St5B-DP-(A).dwg

**DISCLOSURE PLAN**  
of Proposed LOT 2399  
being part of  
Lot 911  
on SP321079



**veris**

BRISBANE (07) 3688 4700 WHITSUNDAYS (07) 4945 6600

MACKAY (07) 4957 9700 CAIRNS (07) 4252 9400

veris.com.au  
ACN 615 735 727  
Veris Australia Pty Ltd

Drawing No  
**30109-DP- 2399**  
Issue  
**A**

**LEGEND**

Final surface contours based on A.H.D. datum at an interval of 0.5m, shown as: 15.5

Where applicable, areas to be filled are shown as:

Depth of fill, in metres, shown as:- + 0.5

Retaining wall and retaining wall height, shown on the lower side of the wall, have been taken from plans supplied by Peak Urban and shown as: (1.2)

Bin Pad Location shown as:







ROAD

PROPOSED LOT 2399

PROPOSED LOT 2383

PROPOSED LOT 2401

PROPOSED LOT 2381

PROPOSED LOT 2382

2400  
381m<sup>2</sup>

Retaining Wall Lot 2382  
Min Height:- 2.2m  
Max Height:- 2.2m  
Average Height:- 2.2m

**ADDITIONAL NOTES:**

The LOT dimensions and area shown hereon are subject to final field survey and also to the requirements of Council and any other authority which may have requirements under any relevant legislation

Final surface contours shown hereon have been supplied by Peak Urban.

Location of retaining walls are as shown on Engineering design drawings. Their as-constructed location may differ from their design location. Retaining wall heights have been supplied by Peak Urban. **The engineering detail shown hereon are preliminary only and are subject to change in final design and statutory approvals**

Compaction of any fill material placed on this site shall be completed to level one inspection and testing services in accordance with AS3798-2007.

Depth of fill values are calculated to the pre-development surface.  
Copyright © Veris Australia Pty Ltd  
11/03/2022.

**FLAGSTONE  
PRECINCT 1 STAGE 5B(i)**  
For  
**PEET FLAGSTONE  
CITY PTY LTD**

**IMPORTANT NOTES:**  
(These notes are an integral part of this plan)

This plan has been prepared for **PEET FLAGSTONE CITY PTY LTD** for the purposes of **A Disclosure Plan Under the Land Sales Act 1984 (as amended)**.

It is not to be used by any other person or corporation or for any other purposes and is subject to the following limitations:

Please refer to the approved Development Application for conditions relating to the LOT and to approved Operational Works drawings for services location and possible easements.

**THESE DESIGNS AND DRAWINGS ARE COPYRIGHT AND ARE NOT TO BE USED OR REPRODUCED WITHOUT THE WRITTEN PERMISSION OF VERIS**

**Data Sources**  
Cadastral Boundaries  
30109-LC-Master(CW) FS94 2014.dwg  
Engineering Design  
FLAGSTONE - BASE - STAGE 5A 5B - DISCLOSURE INFO - 27 01 2022.dwg  
Final Surface Contours  
FLAGSTONE - BASE - STAGE 5A 5B - DISCLOSURE INFO - 27 01 2022.dwg  
Depth of Fill  
FLAGSTONE - DEPTH RANGE CONTOURS - STAGE 5A 5B - DISCLOSURE INFO - 27 01 2022.dwg

Issue	Revisions	Date	Drawn
A	Original	11.03.2022	BK

Locality: FLAGSTONE  
Local Authority: LOGAN CITY COUNCIL  
Horizontal Meridian: MGA, Zone 56  
Vertical Level Datum: AHD D  
Scale: 1:250 @ A4  
Designed: Peak Urban  
Drawn: BK 11/03/2022  
Checked: DE 11/03/2022  
Plot Date: 11 Mar, 2022  
Computer File Ref: 30109-St5B-DP-(A).dwg

**DISCLOSURE PLAN  
of Proposed LOT 2400**  
being part of  
Lot 911  
on SP321079



**veris**

BRISBANE (07) 3666 4700 WHITSUNDAYS (07) 4945 6600

MACKAY (07) 4957 9700 CAIRNS (07) 4252 9400

veris.com.au  
ACN 615 735 727  
Veris Australia Pty Ltd

Drawing No 30109-DP- 2400 Issue A

**LEGEND**

Final surface contours based on A.H.D. datum at an interval of 0.5m, shown as: 15.5

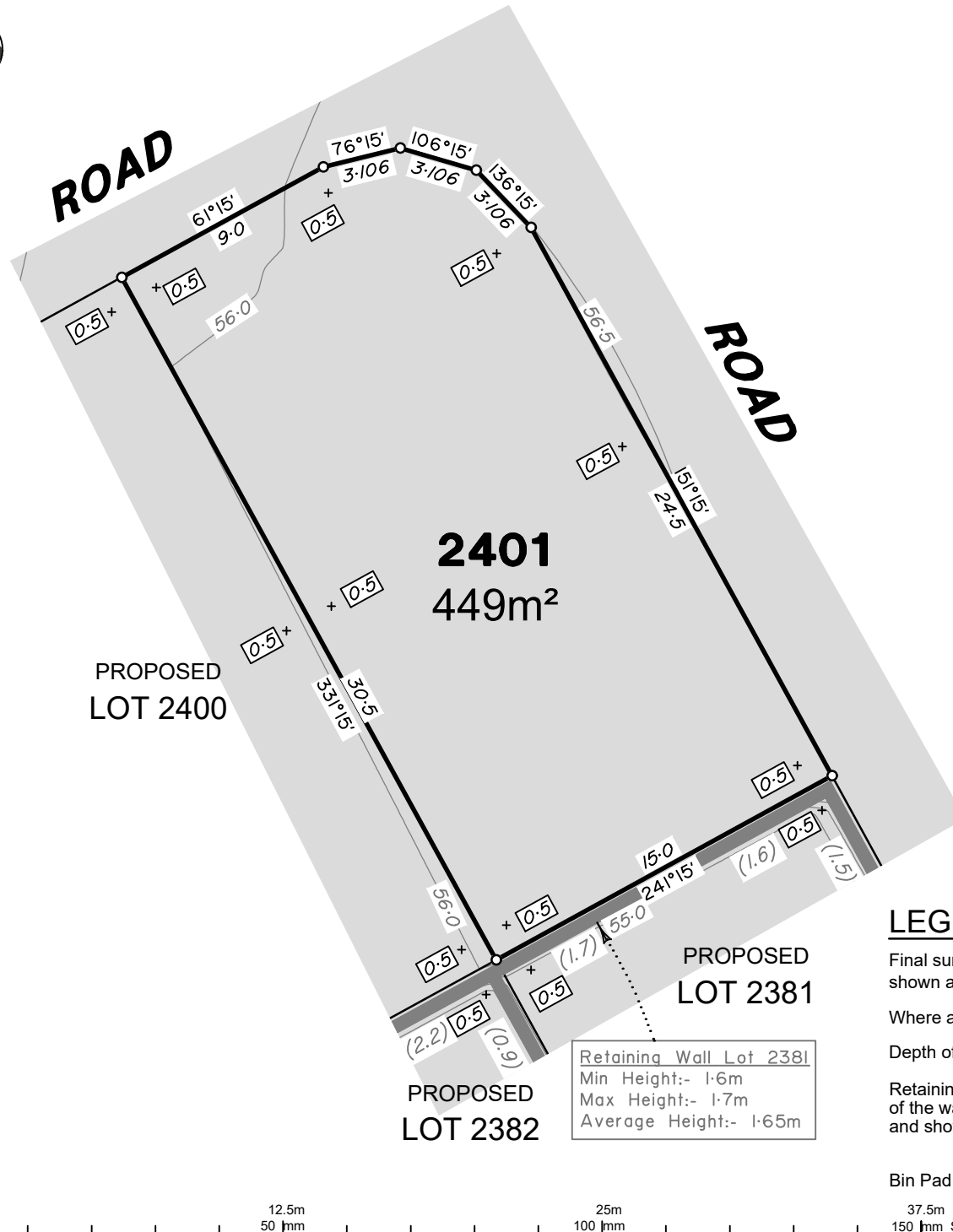
Where applicable, areas to be filled are shown as:

Depth of fill, in metres, shown as:- +0.5

Retaining wall and retaining wall height, shown on the lower side of the wall, have been taken from plans supplied by Peak Urban and shown as: (1.2)

Bin Pad Location shown as:

12.5m 25m 37.5m  
50 mm 100 mm 150 mm SCALE BAR

**ADDITIONAL NOTES:**

The LOT dimensions and area shown hereon are subject to final field survey and also to the requirements of Council and any other authority which may have requirements under any relevant legislation

Final surface contours shown hereon have been supplied by Peak Urban.

Location of retaining walls are as shown on Engineering design drawings. Their as-constructed location may differ from their design location. Retaining wall heights have been supplied by Peak Urban. **The engineering detail shown hereon are preliminary only and are subject to change in final design and statutory approvals**

Compaction of any fill material placed on this site shall be completed to level one inspection and testing services in accordance with AS3798-2007.

Depth of fill values are calculated to the pre-development surface.

Copyright © Veris Australia Pty Ltd  
11/03/2022.

**FLAGSTONE  
PRECINCT 1 STAGE 5B(i)**  
For  
**PEET FLAGSTONE  
CITY PTY LTD**

**IMPORTANT NOTES:**  
(These notes are an integral part of this plan)

This plan has been prepared for **PEET FLAGSTONE CITY PTY LTD** for the purposes of **A Disclosure Plan Under the Land Sales Act 1984 (as amended)**.

It is not to be used by any other person or corporation or for any other purposes and is subject to the following limitations:

Please refer to the approved Development Application for conditions relating to the LOT and to approved Operational Works drawings for services location and possible easements.

**THESE DESIGNS AND DRAWINGS ARE COPYRIGHT AND ARE NOT TO BE USED OR REPRODUCED WITHOUT THE WRITTEN PERMISSION OF VERIS**

**Data Sources**  
Cadastral Boundaries  
30109-LC-Master(CW) FS94 2014.dwg  
Engineering Design  
FLAGSTONE - BASE - STAGE 5A 5B - DISCLOSURE INFO - 27 01 2022.dwg  
Final Surface Contours  
FLAGSTONE - BASE - STAGE 5A 5B - DISCLOSURE INFO - 27 01 2022.dwg  
Depth of Fill  
FLAGSTONE - DEPTH RANGE CONTOURS - STAGE 5A 5B - DISCLOSURE INFO - 27 01 2022.dwg

Issue	Revisions	Date	Drawn
A	Original	11.03.2022	BK

Locality: FLAGSTONE  
Local Authority: LOGAN CITY COUNCIL  
Horizontal Meridian: MGA, Zone 56  
Vertical Level Datum: AHD D  
Scale: 1:250 @ A4  
Designed: Peak Urban  
Drawn: BK 11/03/2022  
Checked: DE 11/03/2022  
Plot Date: 11 Mar, 2022  
Computer File Ref: 30109-St5B-DP-(A).dwg

**DISCLOSURE PLAN  
of Proposed LOT 2401  
being part of  
Lot 911  
on SP321079**



BRISBANE (07) 3688 4700 WHITSUNDAYS (07) 4945 6600

MACKAY (07) 4957 9700 CAIRNS (07) 4252 9400

veris.com.au  
ACN 615 735 727  
Veris Australia Pty Ltd

Drawing No 30109-DP- 2401 Issue A

**LEGEND**

Final surface contours based on A.H.D. datum at an interval of 0.5m, shown as: — 15.5 —

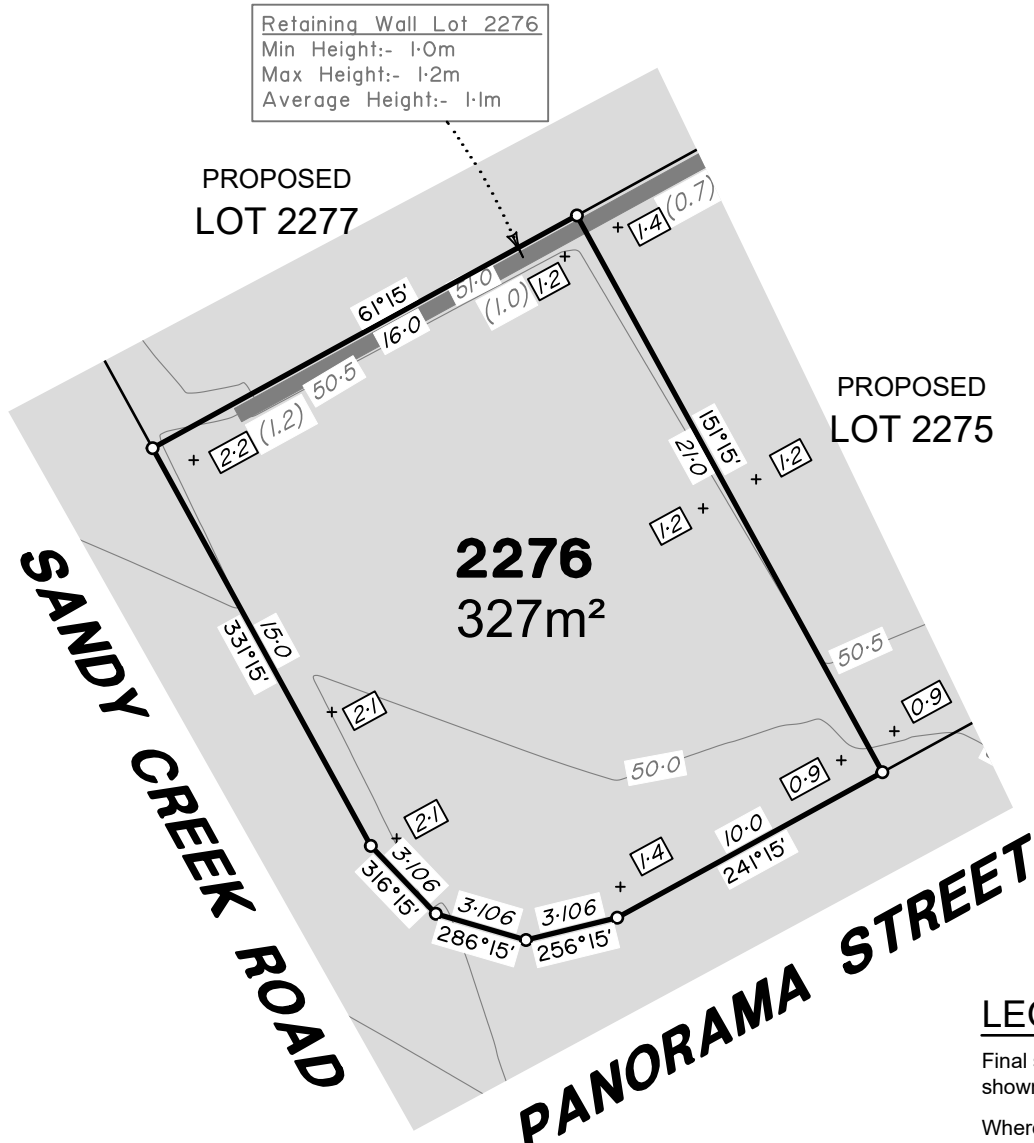
Where applicable, areas to be filled are shown as:

Depth of fill, in metres, shown as:- +0.5

Retaining wall and retaining wall height, shown on the lower side of the wall, have been taken from plans supplied by Peak Urban and shown as:

Bin Pad Location shown as: \*

12.5m 25m 37.5m  
50 mm 100 mm 150 mm SCALE BAR



Retaining Wall Lot 2276  
 Min Height:- 1.0m  
 Max Height:- 1.2m  
 Average Height:- 1.1m

PROPOSED  
 LOT 2277

PROPOSED  
 LOT 2275

**2276**  
 327m<sup>2</sup>

**SANDY CREEK ROAD**

**PANORAMA STREET**

**LEGEND**

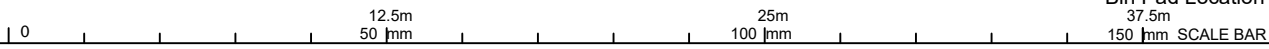
Final surface contours based on A.H.D. datum at an interval of 0.5m, shown as: 15.5

Where applicable, areas to be filled are shown as:

Depth of fill, in metres, shown as:- + 0.5

Retaining wall and retaining wall height, shown on the lower side of the wall, have been taken from plans supplied by Colliers and shown as: (1.2)

Bin Pad Location shown as:



**ADDITIONAL NOTES:**

The LOT dimensions and area shown hereon are subject to final field survey and also to the requirements of Council and any other authority which may have requirements under any relevant legislation

Final surface contours shown hereon have been supplied by Colliers.

Location of retaining walls are as shown on Engineering design drawings. Their as-constructed location may differ from their design location. Retaining wall heights have been supplied by Colliers. **The engineering detail shown hereon are preliminary only and are subject to change in final design and statutory approvals**

Compaction of any fill material placed on this site shall be completed to level one inspection and testing services in accordance with AS3798-2007.

Depth of fill values are calculated to the pre-development surface.  
 Copyright © Veris Australia Pty Ltd  
 11/05/2023.

**FLAGSTONE  
 PRECINCT 1 STAGE 5B(i)**  
 For  
**PEET FLAGSTONE  
 CITY PTY LTD**

**IMPORTANT NOTES:**  
 (These notes are an integral part of this plan)

This plan has been prepared for PEET FLAGSTONE CITY PTY LTD for the purposes of a Disclosure Plan Under the Land Sales Act 1984 (as amended).

It is not to be used by any other person or corporation or for any other purposes and is subject to the following limitations:

Please refer to the approved Development Application for conditions relating to the LOT and to approved Operational Works drawings for services location and possible easements.

THESE DESIGNS AND DRAWINGS ARE COPYRIGHT AND ARE NOT TO BE USED OR REPRODUCED WITHOUT THE WRITTEN PERMISSION OF VERIS

**Data Sources**  
 Cadastral Boundaries  
 30109-LC-Master(CW) FS94 2014.dwg  
 Engineering Design  
 FLAGSTONE - BASE - STAGE 5A 5B - DISCLOSURE INFO - 27 01 2022.dwg

**Final Surface Contours**  
 FLAGSTONE - BASE - STAGE 5A 5B - DISCLOSURE INFO - 27 01 2022.dwg

**Depth of Fill**  
 FLAGSTONE - DEPTH RANGE CONTOURS - STAGE 5A 5B - DISCLOSURE INFO - 27 01 2022.dwg

B	Retaining Wall Detail Update	11.05.2023	BK
A	Original	11.03.2022	BK
Issue	Revisions	Date	Drawn

Locality: FLAGSTONE  
 Local Authority: LOGAN CITY COUNCIL  
 Horizontal Meridian: MGA, Zone 56  
 Vertical Level Datum: AHD D  
 Scale: 1:250 @ A4  
 Designed: Colliers  
 Drawn: BK 11/03/2022  
 Checked: DE 11/03/2022  
 Plot Date: 11 May, 2023  
 Computer File Ref: 30109-St5B-DP-(B).dwg

**DISCLOSURE PLAN**  
 of Proposed LOT 2276  
 being part of  
 Lot 911  
 on SP333235



BRISBANE (07) 3686 4700 WHITSUNDAYS (07) 4945 6600  
 MACKAY (07) 4957 9700 CAIRNS (07) 4252 9400

veris.com.au  
 ACN 615 735 727  
 Veris Australia Pty Ltd

Drawing No Issue  
 30109-DP- 2276 B



PROPOSED  
LOT 2295

**NEW BEITH ROAD**

**SUNSET CIRCUIT**

**2296**  
**699m<sup>2</sup>**

Retaining Wall Lot 2296  
Min Height:- 2.2m  
Max Height:- 2.2m  
Average Height:- 2.2m

**ADDITIONAL NOTES:**

The LOT dimensions and area shown hereon are subject to final field survey and also to the requirements of Council and any other authority which may have requirements under any relevant legislation

Final surface contours shown hereon have been supplied by Colliers.

Location of retaining walls are as shown on Engineering design drawings. Their as-constructed location may differ from their design location. Retaining wall heights have been supplied by Colliers. **The engineering detail shown hereon are preliminary only and are subject to change in final design and statutory approvals**

Compaction of any fill material placed on this site shall be completed to level one inspection and testing services in accordance with AS3798-2007.

Depth of fill values are calculated to the pre-development surface.

Copyright © Veris Australia Pty Ltd  
11/05/2023.

**FLAGSTONE  
PRECINCT 1 STAGE 5B(i)**

For  
**PEET FLAGSTONE  
CITY PTY LTD**

**IMPORTANT NOTES:**

(These notes are an integral part of this plan)

This plan has been prepared for **PEET FLAGSTONE CITY PTY LTD** for the purposes of **A Disclosure Plan Under the Land Sales Act 1984 (as amended)**.

It is not to be used by any other person or corporation or for any other purposes and is subject to the following limitations:

Please refer to the approved Development Application for conditions relating to the LOT and to approved Operational Works drawings for services location and possible easements.

**THESE DESIGNS AND DRAWINGS ARE COPYRIGHT AND ARE NOT TO BE USED OR REPRODUCED WITHOUT THE WRITTEN PERMISSION OF VERIS**

**Data Sources**  
Cadastral Boundaries  
30109-LC-Master(CW) FS94 2014.dwg  
Engineering Design  
FLAGSTONE - BASE - STAGE 5A 5B - DISCLOSURE INFO - 27 01 2022.dwg  
Final Surface Contours  
FLAGSTONE - BASE - STAGE 5A 5B - DISCLOSURE INFO - 27 01 2022.dwg

Depth of Fill  
FLAGSTONE - DEPTH RANGE CONTOURS - STAGE 5A 5B - DISCLOSURE INFO - 27 01 2022.dwg

B	Retaining Wall Detail Update	11.05.2023	BK
A	Original	11.03.2022	BK
Issue	Revisions	Date	Drawn

Locality: FLAGSTONE  
Local Authority: LOGAN CITY COUNCIL  
Horizontal Meridian: MGA, Zone 56  
Vertical Level Datum: AHD D  
Scale: 1:250 @ A4  
Designed: Colliers  
Drawn: BK 11/03/2022  
Checked: DE 11/03/2022  
Plot Date: 11 May, 2023  
Computer File Ref: 30109-St5B-DP-(B).dwg

**DISCLOSURE PLAN**  
of Proposed LOT 2296  
being part of  
Lot 911  
on SP333235



**veris**

BRISBANE (07) 3686 4700 WHITSUNDAYS (07) 4945 6600

MACKAY (07) 4957 9700 CAIRNS (07) 4252 9400

veris.com.au  
ACN 615 735 727  
Veris Australia Pty Ltd

Drawing No  
**30109-DP- 2296**

Issue  
**B**

**LEGEND**

Final surface contours based on A.H.D. datum at an interval of 0.5m, shown as: 15.5

Where applicable, areas to be filled are shown as:

Depth of fill, in metres, shown as:- 0.5

Retaining wall and retaining wall height, shown on the lower side of the wall, have been taken from plans supplied by Colliers and shown as: (1.2)

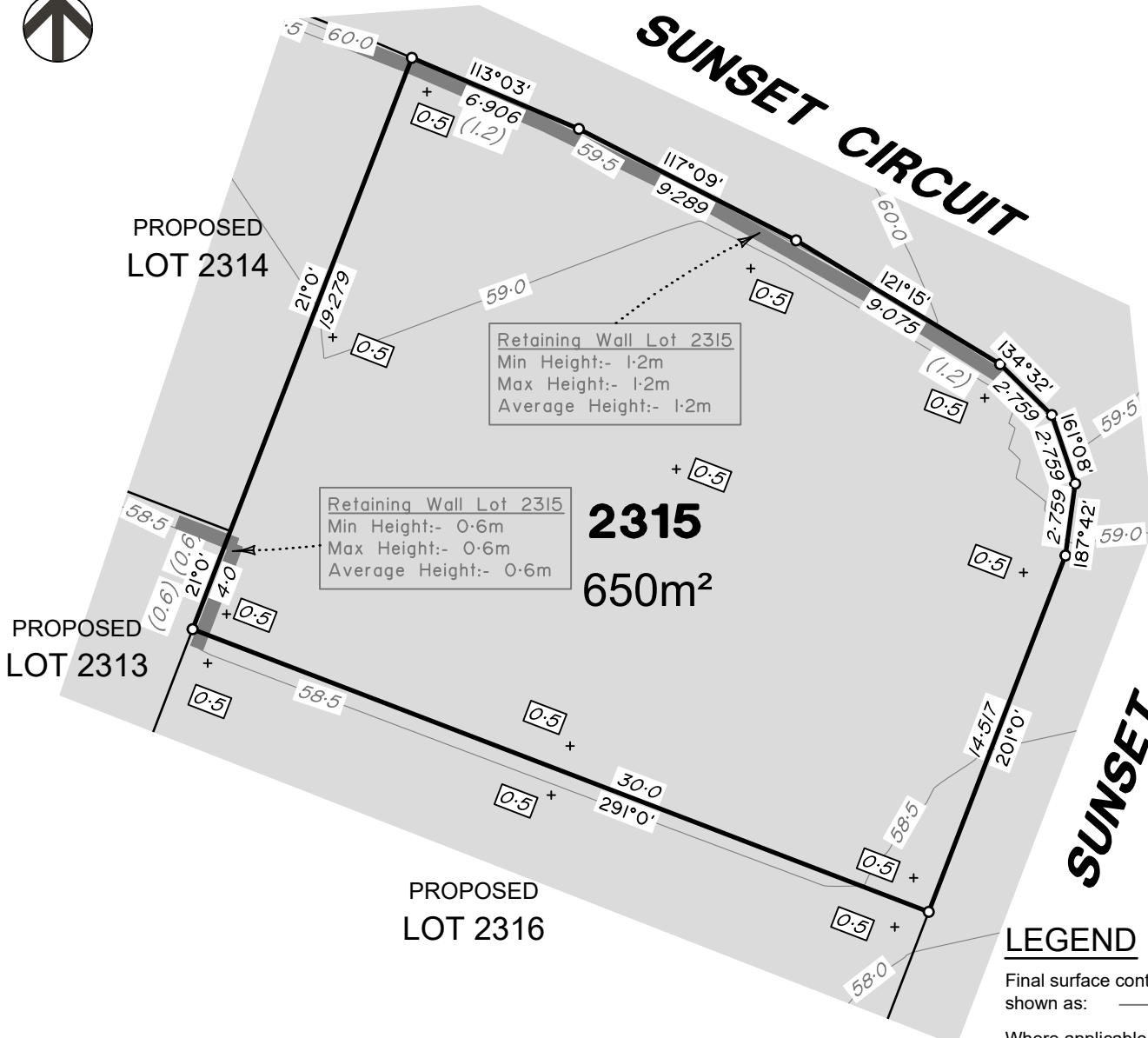
Bin Pad Location shown as:





# SUNSET CIRCUIT

# SUNSET CIRCUIT



Retaining Wall Lot 2315  
 Min Height:- 1.2m  
 Max Height:- 1.2m  
 Average Height:- 1.2m

Retaining Wall Lot 2315  
 Min Height:- 0.6m  
 Max Height:- 0.6m  
 Average Height:- 0.6m

**2315**  
**650m<sup>2</sup>**

### LEGEND

- Final surface contours based on A.H.D. datum at an interval of 0.5m, shown as: 15.5
- Where applicable, areas to be filled are shown as:
- Depth of fill, in metres, shown as:- + 0.5
- Retaining wall and retaining wall height, shown on the lower side of the wall, have been taken from plans supplied by Colliers and shown as: (1.2)
- Bin Pad Location shown as:

**ADDITIONAL NOTES:**  
 The LOT dimensions and area shown hereon are subject to final field survey and also to the requirements of Council and any other authority which may have requirements under any relevant legislation

Final surface contours shown hereon have been supplied by Colliers.

Location of retaining walls are as shown on Engineering design drawings. Their as-constructed location may differ from their design location. Retaining wall heights have been supplied by Colliers. **The engineering detail shown hereon are preliminary only and are subject to change in final design and statutory approvals**

Compaction of any fill material placed on this site shall be completed to level one inspection and testing services in accordance with AS3798-2007.

Depth of fill values are calculated to the pre-development surface.  
 Copyright © Veris Australia Pty Ltd  
 11/05/2023.

**FLAGSTONE  
 PRECINCT 1 STAGE 5B(i)**  
 For  
**PEET FLAGSTONE  
 CITY PTY LTD**

**IMPORTANT NOTES:**  
 (These notes are an integral part of this plan)

This plan has been prepared for PEET FLAGSTONE CITY PTY LTD for the purposes of a Disclosure Plan Under the Land Sales Act 1984 (as amended).

It is not to be used by any other person or corporation or for any other purposes and is subject to the following limitations:

Please refer to the approved Development Application for conditions relating to the LOT and to approved Operational Works drawings for services location and possible easements.

THESE DESIGNS AND DRAWINGS ARE COPYRIGHT AND ARE NOT TO BE USED OR REPRODUCED WITHOUT THE WRITTEN PERMISSION OF VERIS

**Data Sources**  
 Cadastral Boundaries  
 30109-LC-Master(CW) FS94 2014.dwg  
 Engineering Design  
 FLAGSTONE - BASE - STAGE 5A 5B - DISCLOSURE INFO - 27 01 2022.dwg  
 Final Surface Contours  
 FLAGSTONE - BASE - STAGE 5A 5B - DISCLOSURE INFO - 27 01 2022.dwg  
 Depth of Fill  
 FLAGSTONE - DEPTH RANGE CONTOURS - STAGE 5A 5B - DISCLOSURE INFO - 27 01 2022.dwg

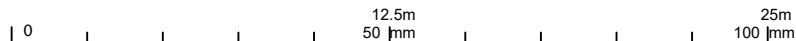
B	Retaining Wall Detail Update	11.05.2023	BK
A	Original	11.03.2022	BK
Issue	Revisions	Date	Drawn

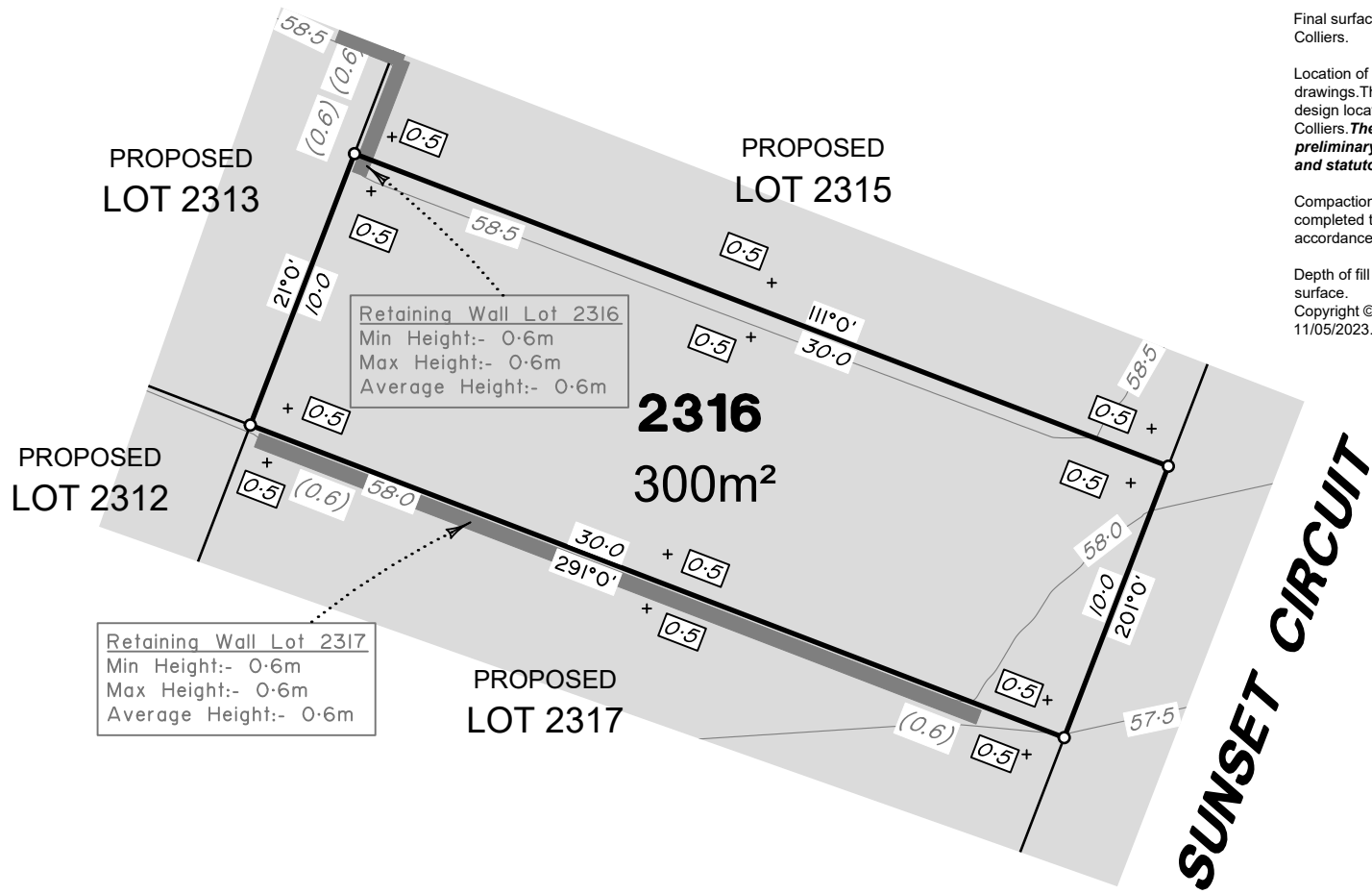
Locality: FLAGSTONE  
 Local Authority: LOGAN CITY COUNCIL  
 Horizontal Meridian: MGA, Zone 56  
 Vertical Level Datum: AHD D  
 Scale: 1:250 @ A4  
 Designed: Colliers  
 Drawn: BK 11/03/2022  
 Checked: DE 11/03/2022  
 Plot Date: 11 May, 2023  
 Computer File Ref: 30109-St5B-DP-(B).dwg

**DISCLOSURE PLAN  
 of Proposed LOT 2315  
 being part of  
 Lot 911  
 on SP333235**



BRISBANE (07) 3686 4700 WHITSUNDAYS (07) 4945 6600  
 MACKAY (07) 4957 9700 CAIRNS (07) 4252 9400  
 veris.com.au  
 ACN 615 735 727  
 Veris Australia Pty Ltd





Retaining Wall Lot 2316  
 Min Height:- 0.6m  
 Max Height:- 0.6m  
 Average Height:- 0.6m

Retaining Wall Lot 2317  
 Min Height:- 0.6m  
 Max Height:- 0.6m  
 Average Height:- 0.6m

**ADDITIONAL NOTES:**

The LOT dimensions and area shown hereon are subject to final field survey and also to the requirements of Council and any other authority which may have requirements under any relevant legislation

Final surface contours shown hereon have been supplied by Colliers.

Location of retaining walls are as shown on Engineering design drawings. Their as-constructed location may differ from their design location. Retaining wall heights have been supplied by Colliers. **The engineering detail shown hereon are preliminary only and are subject to change in final design and statutory approvals**

Compaction of any fill material placed on this site shall be completed to level one inspection and testing services in accordance with AS3798-2007.

Depth of fill values are calculated to the pre-development surface.

Copyright © Veris Australia Pty Ltd  
 11/05/2023.

**FLAGSTONE  
 PRECINCT 1 STAGE 5B(i)**  
 For  
**PEET FLAGSTONE  
 CITY PTY LTD**

**IMPORTANT NOTES:**  
 (These notes are an integral part of this plan)

This plan has been prepared for **PEET FLAGSTONE CITY PTY LTD** for the purposes of **A Disclosure Plan Under the Land Sales Act 1984 (as amended)**.

It is not to be used by any other person or corporation or for any other purposes and is subject to the following limitations:

Please refer to the approved Development Application for conditions relating to the LOT and to approved Operational Works drawings for services location and possible easements.

**THESE DESIGNS AND DRAWINGS ARE COPYRIGHT AND ARE NOT TO BE USED OR REPRODUCED WITHOUT THE WRITTEN PERMISSION OF VERIS**

**Data Sources**  
 Cadastral Boundaries  
 30109-LC-Master(CW) FS94 2014.dwg  
 Engineering Design  
 FLAGSTONE - BASE - STAGE 5A 5B - DISCLOSURE INFO - 27 01 2022.dwg  
 Final Surface Contours  
 FLAGSTONE - BASE - STAGE 5A 5B - DISCLOSURE INFO - 27 01 2022.dwg  
 Depth of Fill  
 FLAGSTONE - DEPTH RANGE CONTOURS - STAGE 5A 5B - DISCLOSURE INFO - 27 01 2022.dwg

B	Retaining Wall Detail Update	11.05.2023	BK
A	Original	11.03.2022	BK

Issue/Revisions Date Drawn  
 Locality: FLAGSTONE  
 Local Authority: LOGAN CITY COUNCIL  
 Horizontal Meridian: MGA, Zone 56  
 Vertical Level Datum: AHD D  
 Scale: 1:250 @ A4  
 Designed: Colliers  
 Drawn: BK 11/03/2022  
 Checked: DE 11/03/2022  
 Plot Date: 11 May, 2023  
 Computer File Ref: 30109-St5B-DP-(B).dwg

**DISCLOSURE PLAN**  
 of Proposed LOT 2316  
 being part of  
 Lot 911  
 on SP333235



BRISBANE (07) 3686 4700 WHITSUNDAYS (07) 4945 6600  
 MACKAY (07) 4957 9700 CAIRNS (07) 4252 9400

veris.com.au  
 ACN 615 735 727  
 Veris Australia Pty Ltd

Drawing No Issue  
**30109-DP- 2316 B**

**LEGEND**

Final surface contours based on A.H.D. datum at an interval of 0.5m, shown as: 15.5

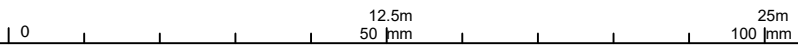
Where applicable, areas to be filled are shown as:

Depth of fill, in metres, shown as:- +

Retaining wall and retaining wall height, shown on the lower side of the wall, have been taken from plans supplied by Colliers and shown as: (1.2)

Bin Pad Location shown as:

37.5m  
 150 mm SCALE BAR





PROPOSED LOT 2311

PROPOSED LOT 2318

PROPOSED LOT 2310

2319  
611m<sup>2</sup>  
+ 0.5

PROPOSED LOT 2309

PROPOSED LOT 2308

SUNSET  
CIRCUIT

PANORAMA  
STREET

Retaining Wall Lot 2310  
Min Height:- 0.8m  
Max Height:- 0.9m  
Average Height:- 0.85m

Retaining Wall Lot 2309  
Min Height:- 2.4m  
Max Height:- 2.5m  
Average Height:- 2.45m

Retaining Wall Lot 2319  
Min Height:- 0.5m  
Max Height:- 1.0m  
Average Height:- 0.75m

Retaining Wall Lot 2308  
Min Height:- 2.5m  
Max Height:- 2.5m  
Average Height:- 2.5m

**ADDITIONAL NOTES:**

The LOT dimensions and area shown hereon are subject to final field survey and also to the requirements of Council and any other authority which may have requirements under any relevant legislation

Final surface contours shown hereon have been supplied by Colliers.

Location of retaining walls are as shown on Engineering design drawings. Their as-constructed location may differ from their design location. Retaining wall heights have been supplied by Colliers. **The engineering detail shown hereon are preliminary only and are subject to change in final design and statutory approvals**

Compaction of any fill material placed on this site shall be completed to level one inspection and testing services in accordance with AS3798-2007.

Depth of fill values are calculated to the pre-development surface.

Copyright © Veris Australia Pty Ltd  
11/05/2023.

FLAGSTONE  
PRECINCT 1 STAGE 5B(i)  
For  
PEET FLAGSTONE  
CITY PTY LTD

**IMPORTANT NOTES:**  
(These notes are an integral part of this plan)

This plan has been prepared by PEET FLAGSTONE CITY PTY LTD for the purposes of a Disclosure Plan Under the Land Sales Act 1984 (as amended).

It is not to be used by any other person or corporation or for any other purposes and is subject to the following limitations:

Please refer to the approved Development Application for conditions relating to the LOT and to approved Operational Works drawings for services location and possible easements.

THESE DESIGNS AND DRAWINGS ARE COPYRIGHT AND ARE NOT TO BE USED OR REPRODUCED WITHOUT THE WRITTEN PERMISSION OF VERIS

**Data Sources**  
Cadastral Boundaries  
30109-LC-Master(CW) FS94 2014.dwg  
Engineering Design  
FLAGSTONE - BASE - STAGE 5A 5B - DISCLOSURE INFO - 27 01 2022.dwg

**Final Surface Contours**  
FLAGSTONE - BASE - STAGE 5A 5B - DISCLOSURE INFO - 27 01 2022.dwg

**Depth of Fill**  
FLAGSTONE - DEPTH RANGE CONTOURS - STAGE 5A 5B - DISCLOSURE INFO - 27 01 2022.dwg

B	Retaining Wall Detail Update	11.05.2023	BK
A	Original	11.03.2022	BK
Issue	Revisions	Date	Drawn

Locality: FLAGSTONE  
Local Authority: LOGAN CITY COUNCIL  
Horizontal Meridian: MGA, Zone 56  
Vertical Level Datum: AHD D  
Scale: 1:250 @ A4  
Designed: Colliers  
Drawn: BK 11/03/2022  
Checked: DE 11/03/2022  
Plot Date: 11 May, 2023  
Computer File Ref: 30109-St5Bi-DP-(B).dwg

DISCLOSURE PLAN  
of Proposed LOT 2319  
being part of  
Lot 911  
on SP333235



**veris**

BRISBANE (07) 3666 4700 WHITSUNDAYS (07) 4945 6600

MACKAY (07) 4957 9700 CAIRNS (07) 4252 9400

veris.com.au  
ACN 615 735 727  
Veris Australia Pty Ltd

Drawing No 30109-DP- 2319 Issue B

**LEGEND**

Final surface contours based on A.H.D. datum at an interval of 0.5m, shown as: — 15.5 —

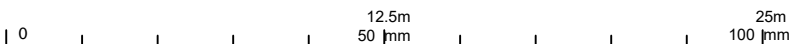
Where applicable, areas to be filled are shown as:

Depth of fill, in metres, shown as:- + 0.5

Retaining wall and retaining wall height, shown on the lower side of the wall, have been taken from plans supplied by Colliers and shown as:

Bin Pad Location shown as: \*

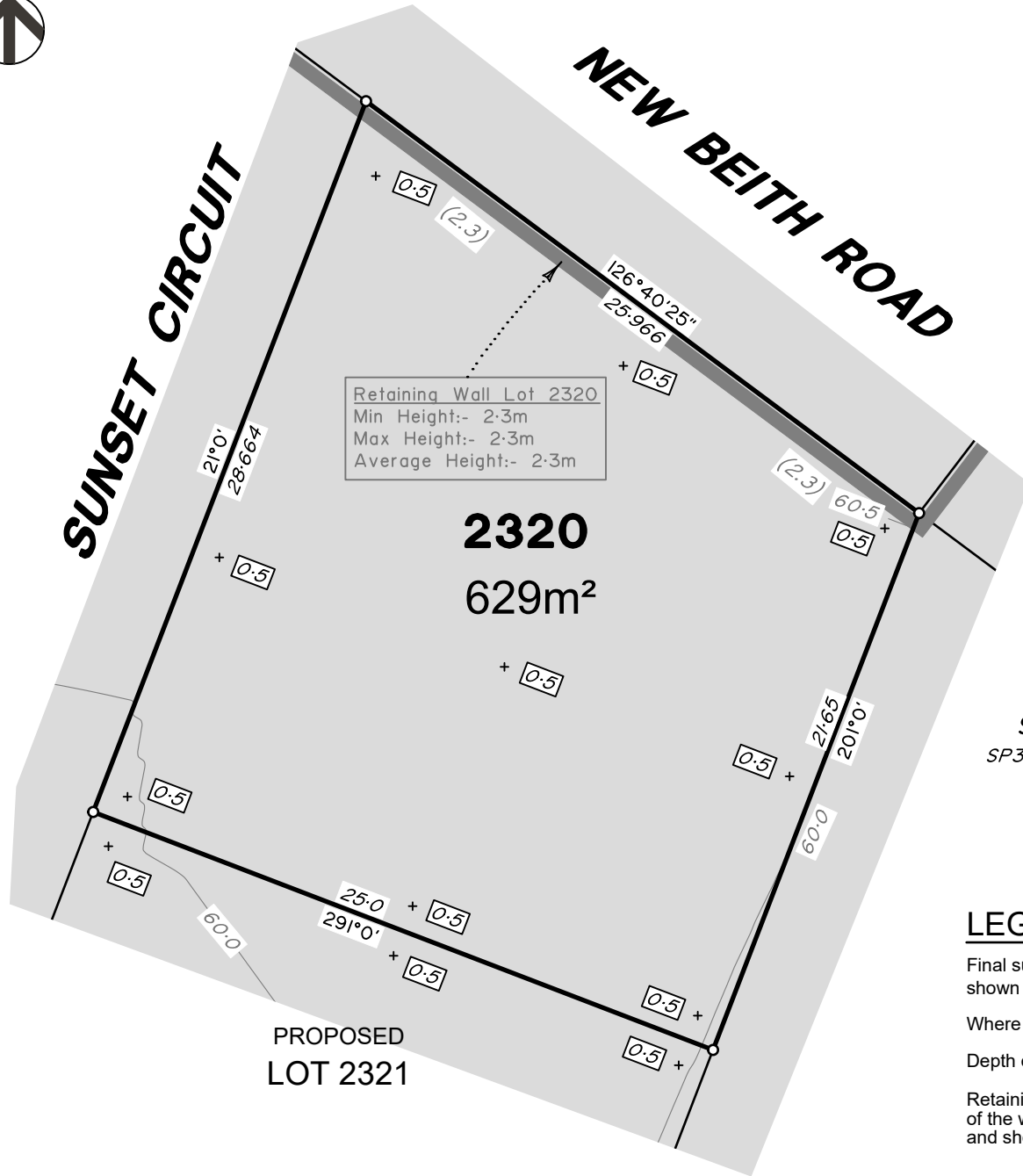
37.5m  
150 mm SCALE BAR





SUNSET CIRCUIT

NEW BEITH ROAD

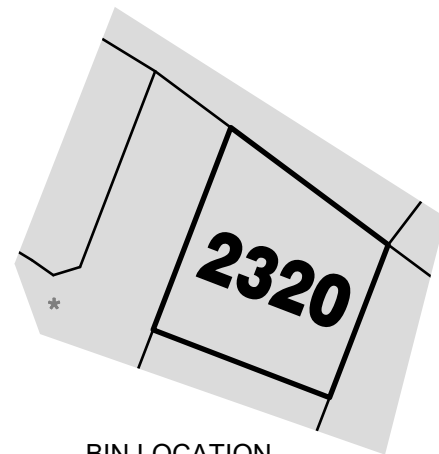


Retaining Wall Lot 2320  
Min Height:- 2.3m  
Max Height:- 2.3m  
Average Height:- 2.3m

2320  
629m<sup>2</sup>

PROPOSED  
LOT 2321

911  
SP333235



BIN LOCATION

### LEGEND

Final surface contours based on A.H.D. datum at an interval of 0.5m, shown as: — 15.5 —

Where applicable, areas to be filled are shown as:

Depth of fill, in metres, shown as:- +0.5

Retaining wall and retaining wall height, shown on the lower side of the wall, have been taken from plans supplied by Colliers and shown as:

Bin Pad Location shown as: \*

**ADDITIONAL NOTES:**  
The LOT dimensions and area shown hereon are subject to final field survey and also to the requirements of Council and any other authority which may have requirements under any relevant legislation

Final surface contours shown hereon have been supplied by Colliers.

Location of retaining walls are as shown on Engineering design drawings. Their as-constructed location may differ from their design location. Retaining wall heights have been supplied by Colliers. **The engineering detail shown hereon are preliminary only and are subject to change in final design and statutory approvals**

Compaction of any fill material placed on this site shall be completed to level one inspection and testing services in accordance with AS3798-2007.

Depth of fill values are calculated to the pre-development surface.  
Copyright © Veris Australia Pty Ltd  
11/05/2023.

## FLAGSTONE PRECINCT 1 STAGE 5B(i) For PEET FLAGSTONE CITY PTY LTD

**IMPORTANT NOTES:**  
(These notes are an integral part of this plan)

This plan has been prepared for PEET FLAGSTONE CITY PTY LTD for the purposes of a Disclosure Plan Under the Land Sales Act 1984 (as amended).

It is not to be used by any other person or corporation or for any other purposes and is subject to the following limitations:

Please refer to the approved Development Application for conditions relating to the LOT and to approved Operational Works drawings for services location and possible easements.

THESE DESIGNS AND DRAWINGS ARE COPYRIGHT AND ARE NOT TO BE USED OR REPRODUCED WITHOUT THE WRITTEN PERMISSION OF VERIS

**Data Sources**

Cadastral Boundaries	30109-LC-Master(CW) FS94 2014.dwg
Engineering Design	FLAGSTONE - BASE - STAGE 5A 5B - DISCLOSURE INFO - 27 01 2022.dwg
Final Surface Contours	FLAGSTONE - BASE - STAGE 5A 5B - DISCLOSURE INFO - 27 01 2022.dwg
Depth of Fill	FLAGSTONE - DEPTH RANGE CONTOURS - STAGE 5A 5B - DISCLOSURE INFO - 27 01 2022.dwg

B	Retaining Wall Detail Update	11.05.2023	BK
A	Original	11.03.2022	BK

Issue	Revisions	Date	Drawn
Locality:	FLAGSTONE		
Local Authority:	LOGAN CITY COUNCIL		
Horizontal Meridian:	MGA, Zone 56		
Vertical Level Datum:	AHD D		
Scale:	1:250 @ A4		
Designed:	Colliers		
Drawn:	BK 11/03/2022		
Checked:	DE 11/03/2022		
Plot Date:	11 May, 2023		
Computer File Ref:	30109-St5B-DP-(B).dwg		

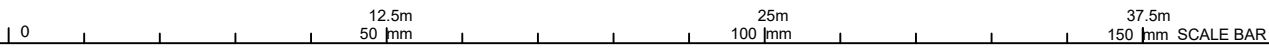
### DISCLOSURE PLAN of Proposed LOT 2320 being part of Lot 911 on SP333235



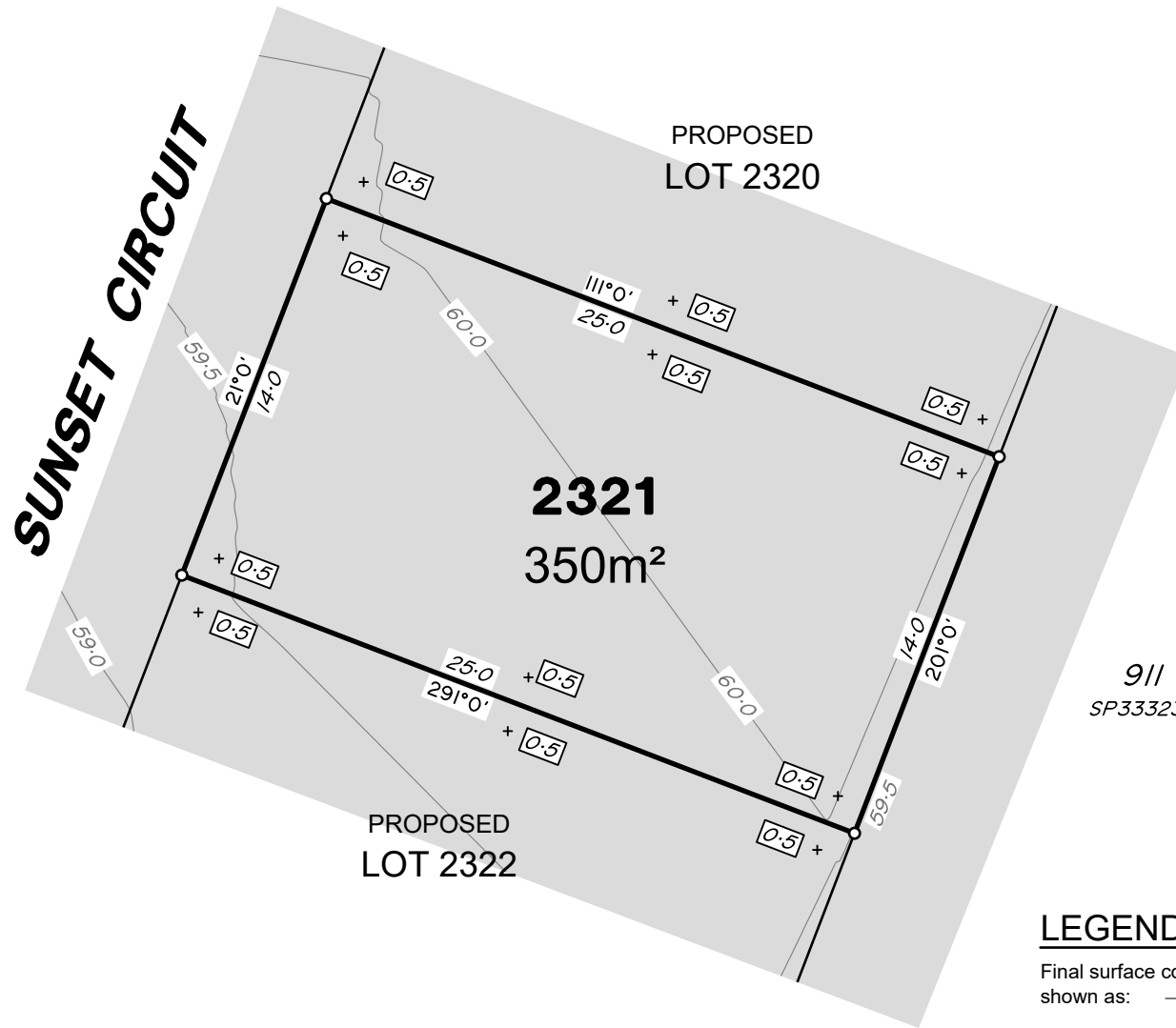
BRISBANE (07) 3686 4700 WHITSUNDAYS (07) 4945 6600  
MACKAY (07) 4957 9700 CAIRNS (07) 4252 9400

veris.com.au  
ACN 615 735 727  
Veris Australia Pty Ltd

Drawing No 30109-DP- 2320 Issue B





**ADDITIONAL NOTES:**

The LOT dimensions and area shown hereon are subject to final field survey and also to the requirements of Council and any other authority which may have requirements under any relevant legislation

Final surface contours shown hereon have been supplied by Colliers.

Location of retaining walls are as shown on Engineering design drawings. Their as-constructed location may differ from their design location. Retaining wall heights have been supplied by Colliers. **The engineering detail shown hereon are preliminary only and are subject to change in final design and statutory approvals**

Compaction of any fill material placed on this site shall be completed to level one inspection and testing services in accordance with AS3798-2007.

Depth of fill values are calculated to the pre-development surface.

Copyright © Veris Australia Pty Ltd  
11/05/2023.

**LEGEND**

Final surface contours based on A.H.D. datum at an interval of 0.5m, shown as: 15.5

Where applicable, areas to be filled are shown as:

Depth of fill, in metres, shown as:- 0.5

Retaining wall and retaining wall height, shown on the lower side of the wall, have been taken from plans supplied by Colliers and shown as: (1.2)

Bin Pad Location shown as:



**FLAGSTONE  
PRECINCT 1 STAGE 5B(i)**  
For  
**PEET FLAGSTONE  
CITY PTY LTD**

**IMPORTANT NOTES:**  
(These notes are an integral part of this plan)

This plan has been prepared for PEET FLAGSTONE CITY PTY LTD for the purposes of a **Disclosure Plan Under the Land Sales Act 1984 (as amended)**.

It is not to be used by any other person or corporation or for any other purposes and is subject to the following limitations:

Please refer to the approved Development Application for conditions relating to the LOT and to approved Operational Works drawings for services location and possible easements.

**THESE DESIGNS AND DRAWINGS ARE COPYRIGHT AND ARE NOT TO BE USED OR REPRODUCED WITHOUT THE WRITTEN PERMISSION OF VERIS**

Data Sources		
Cadastral Boundaries		
30109-LC-Master(CW) FS94 2014.dwg		
Engineering Design		
FLAGSTONE - BASE - STAGE 5A 5B - DISCLOSURE INFO - 27 01 2022.dwg		
Final Surface Contours		
FLAGSTONE - BASE - STAGE 5A 5B - DISCLOSURE INFO - 27 01 2022.dwg		
Depth of Fill		
FLAGSTONE - DEPTH RANGE CONTOURS - STAGE 5A 5B - DISCLOSURE INFO - 27 01 2022.dwg		

Issue	Revisions	Date	Drawn
B	Retaining Wall Detail Update	11.05.2023	BK
A	Original	11.03.2022	BK

Locality:	FLAGSTONE
Local Authority:	LOGAN CITY COUNCIL
Horizontal Meridian:	MGA, Zone 56
Vertical Level Datum:	AHD D
Scale:	1:250 @ A4
Designed:	Colliers
Drawn:	BK 11/03/2022
Checked:	DE 11/03/2022
Plot Date:	11 May, 2023
Computer File Ref:	30109-St5B-DP-(B).dwg

**DISCLOSURE PLAN  
of Proposed LOT 2321  
being part of  
Lot 911  
on SP333235**

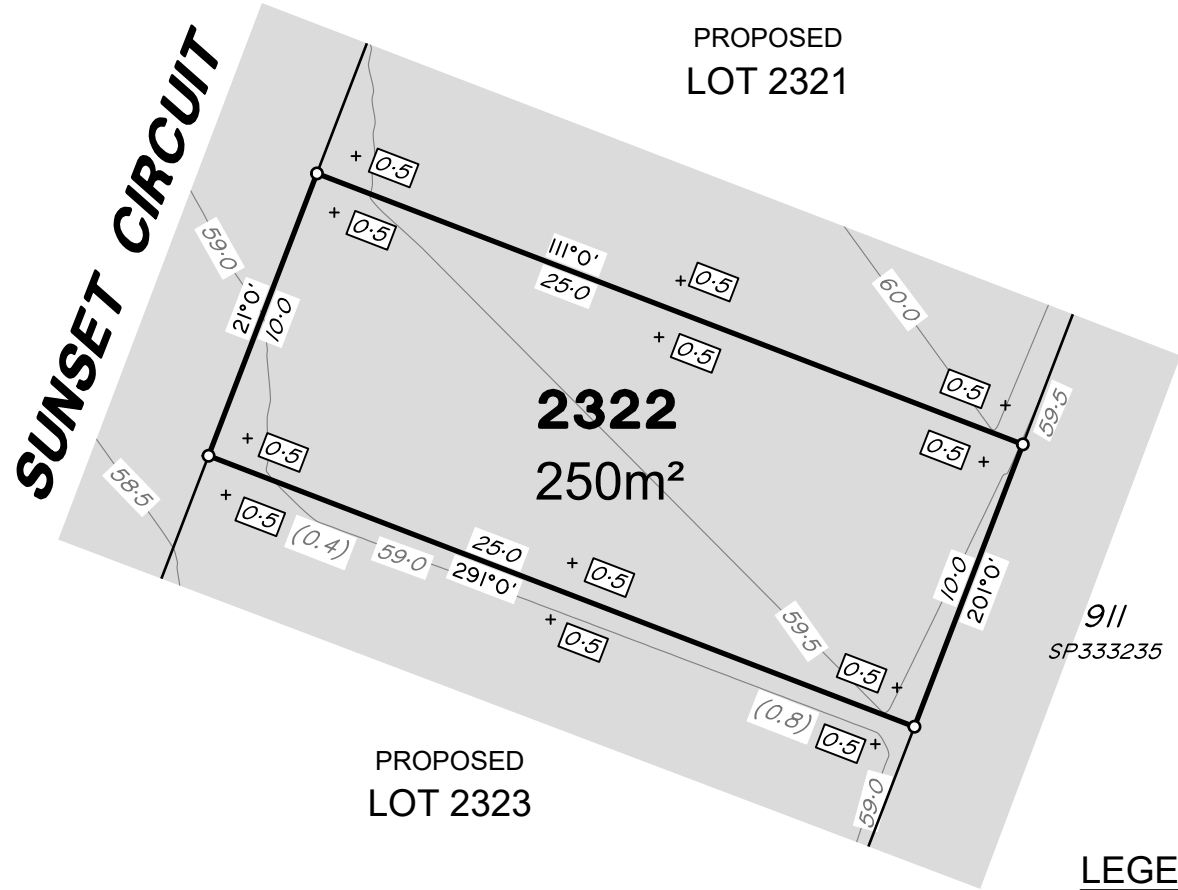


BRISBANE (07) 3686 4700 WHITSUNDAYS (07) 4945 6600

MACKAY (07) 4957 9700 CAIRNS (07) 4252 9400

veris.com.au  
ACN 615 735 727  
Veris Australia Pty Ltd

Drawing No Issue  
**30109-DP- 2321 B**



**ADDITIONAL NOTES:**

The LOT dimensions and area shown hereon are subject to final field survey and also to the requirements of Council and any other authority which may have requirements under any relevant legislation

Final surface contours shown hereon have been supplied by Colliers.

Location of retaining walls are as shown on Engineering design drawings. Their as-constructed location may differ from their design location. Retaining wall heights have been supplied by Colliers. **The engineering detail shown hereon are preliminary only and are subject to change in final design and statutory approvals**

Compaction of any fill material placed on this site shall be completed to level one inspection and testing services in accordance with AS3798-2007.

Depth of fill values are calculated to the pre-development surface.  
Copyright © Veris Australia Pty Ltd  
11/05/2023.

**FLAGSTONE  
PRECINCT 1 STAGE 5B(i)**  
For  
**PEET FLAGSTONE  
CITY PTY LTD**

**IMPORTANT NOTES:**  
(These notes are an integral part of this plan)

This plan has been prepared for **PEET FLAGSTONE CITY PTY LTD** for the purposes of **A Disclosure Plan Under the Land Sales Act 1984 (as amended)**.

It is not to be used by any other person or corporation or for any other purposes and is subject to the following limitations:

Please refer to the approved Development Application for conditions relating to the LOT and to approved Operational Works drawings for services location and possible easements.

**THESE DESIGNS AND DRAWINGS ARE COPYRIGHT AND ARE NOT TO BE USED OR REPRODUCED WITHOUT THE WRITTEN PERMISSION OF VERIS**

**Data Sources**  
Cadastral Boundaries  
30109-LC-Master(CW) FS94 2014.dwg  
Engineering Design  
FLAGSTONE - BASE - STAGE 5A 5B - DISCLOSURE INFO - 27 01 2022.dwg  
Final Surface Contours  
FLAGSTONE - BASE - STAGE 5A 5B - DISCLOSURE INFO - 27 01 2022.dwg

**Depth of Fill**  
FLAGSTONE - DEPTH RANGE CONTOURS - STAGE 5A 5B - DISCLOSURE INFO - 27 01 2022.dwg

B	Retaining Wall Detail Update	11.05.2023	BK
A	Original	11.03.2022	BK
Issue	Revisions	Date	Drawn

Locality: FLAGSTONE  
Local Authority: LOGAN CITY COUNCIL  
Horizontal Meridian: MGA, Zone 56  
Vertical Level Datum: AHD D  
Scale: 1:250 @ A4  
Designed: Colliers  
Drawn: BK 11/03/2022  
Checked: DE 11/03/2022  
Plot Date: 11 May, 2023  
Computer File Ref: 30109-St5B-DP-(B).dwg

**DISCLOSURE PLAN**  
of Proposed LOT 2322  
being part of  
Lot 911  
on SP333235



BRISBANE (07) 3686 4700 WHITSUNDAYS (07) 4945 6600

MACKAY (07) 4957 9700 CAIRNS (07) 4252 9400

veris.com.au  
ACN 615 735 727  
Veris Australia Pty Ltd

Drawing No  
**30109-DP- 2322** Issue  
**B**

**LEGEND**

Final surface contours based on A.H.D. datum at an interval of 0.5m, shown as: 15.5

Where applicable, areas to be filled are shown as:

Depth of fill, in metres, shown as:- 0.5

Retaining wall and retaining wall height, shown on the lower side of the wall, have been taken from plans supplied by Colliers and shown as: (1.2)

Bin Pad Location shown as:





**SUNSET CIRCUIT**

PROPOSED  
LOT 2322

**2323**  
250m<sup>2</sup>

PROPOSED  
LOT 2324

911  
SP333235

Retaining Wall Lot 2324  
Min Height:- 1.3m  
Max Height:- 1.3m  
Average Height:- 1.3m

**ADDITIONAL NOTES:**

The LOT dimensions and area shown hereon are subject to final field survey and also to the requirements of Council and any other authority which may have requirements under any relevant legislation

Final surface contours shown hereon have been supplied by Colliers.

Location of retaining walls are as shown on Engineering design drawings. Their as-constructed location may differ from their design location. Retaining wall heights have been supplied by Colliers. **The engineering detail shown hereon are preliminary only and are subject to change in final design and statutory approvals**

Compaction of any fill material placed on this site shall be completed to level one inspection and testing services in accordance with AS3798-2007.

Depth of fill values are calculated to the pre-development surface.  
Copyright © Veris Australia Pty Ltd  
11/05/2023.

**FLAGSTONE  
PRECINCT 1 STAGE 5B(i)**  
For  
**PEET FLAGSTONE  
CITY PTY LTD**

**IMPORTANT NOTES:**  
(These notes are an integral part of this plan)

This plan has been prepared for **PEET FLAGSTONE CITY PTY LTD** for the purposes of **A Disclosure Plan Under the Land Sales Act 1984 (as amended)**.

It is not to be used by any other person or corporation or for any other purposes and is subject to the following limitations:

Please refer to the approved Development Application for conditions relating to the LOT and to approved Operational Works drawings for services location and possible easements.

**THESE DESIGNS AND DRAWINGS ARE COPYRIGHT AND ARE NOT TO BE USED OR REPRODUCED WITHOUT THE WRITTEN PERMISSION OF VERIS**

**Data Sources**  
Cadastral Boundaries  
30109-LC-Master(CW) FS94 2014.dwg  
Engineering Design  
FLAGSTONE - BASE - STAGE 5A 5B - DISCLOSURE INFO - 27 01 2022.dwg

**Final Surface Contours**  
FLAGSTONE - BASE - STAGE 5A 5B - DISCLOSURE INFO - 27 01 2022.dwg

**Depth of Fill**  
FLAGSTONE - DEPTH RANGE CONTOURS - STAGE 5A 5B - DISCLOSURE INFO - 27 01 2022.dwg

B	Retaining Wall Detail Update	11.05.2023	BK
A	Original	11.03.2022	BK
Issue	Revisions	Date	Drawn

Locality: FLAGSTONE  
Local Authority: LOGAN CITY COUNCIL  
Horizontal Meridian: MGA, Zone 56  
Vertical Level Datum: AHD D  
Scale: 1:250 @ A4  
Designed: Colliers  
Drawn: BK 11/03/2022  
Checked: DE 11/03/2022  
Plot Date: 11 May, 2023  
Computer File Ref: 30109-St5B-DP-(B).dwg

**DISCLOSURE PLAN  
of Proposed LOT 2323  
being part of  
Lot 911  
on SP333235**



**veris**

BRISBANE (07) 3686 4700 WHITSUNDAYS (07) 4945 6600

MACKAY (07) 4957 9700 CAIRNS (07) 4252 9400

veris.com.au  
ACN 615 735 727  
Veris Australia Pty Ltd

Drawing No  
**30109-DP- 2323**  
Issue  
**B**

**LEGEND**

Final surface contours based on A.H.D. datum at an interval of 0.5m, shown as: 15.5

Where applicable, areas to be filled are shown as:

Depth of fill, in metres, shown as:- +0.5

Retaining wall and retaining wall height, shown on the lower side of the wall, have been taken from plans supplied by Colliers and shown as: (1.2)

Bin Pad Location shown as:

12.5m 25m 37.5m  
50 mm 100 mm 150 mm SCALE BAR