

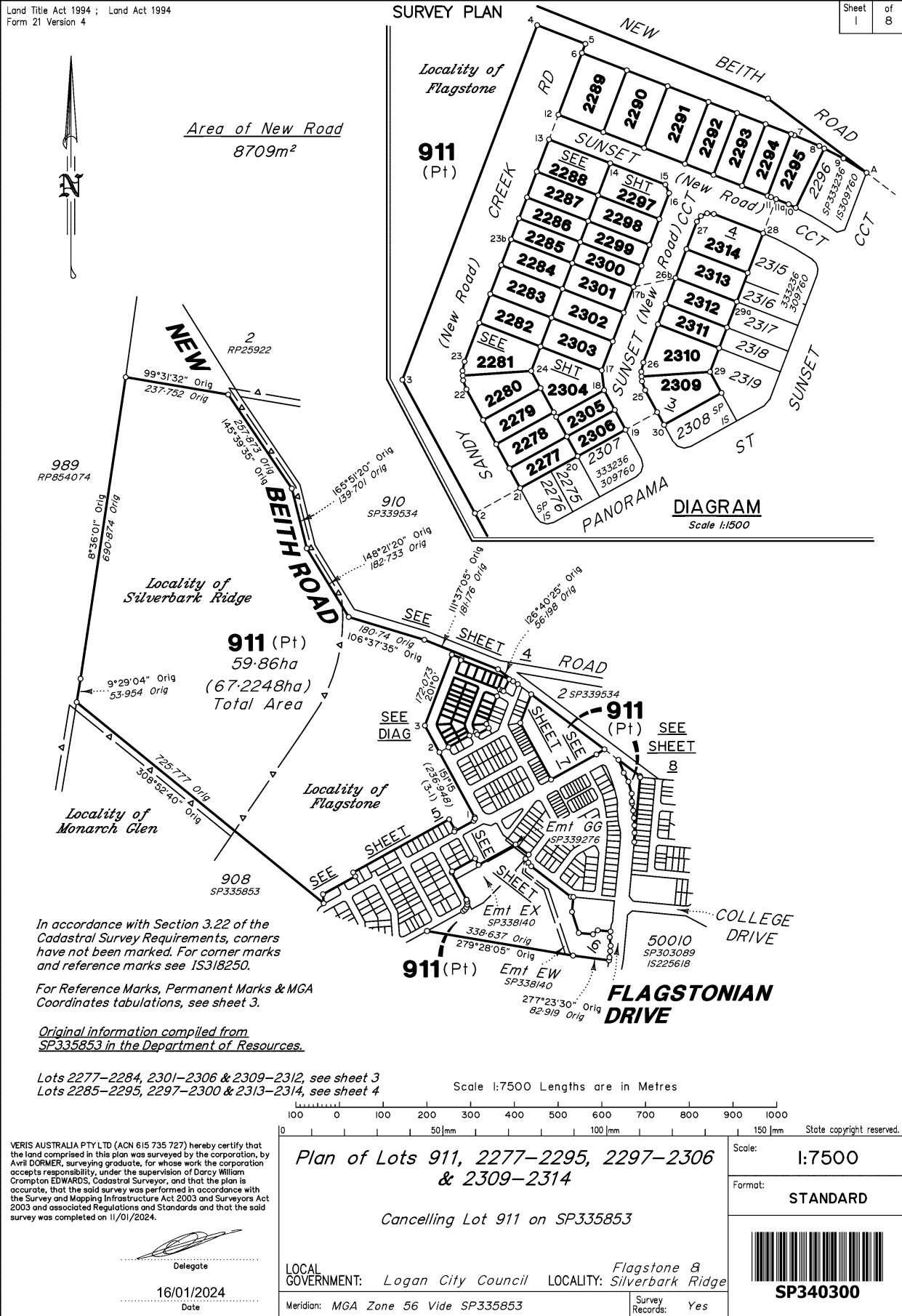
Land Title Act 1994 ; Land Act 1994
Form 21 Version 4

Sheet 1 of 8



Area of New Road
8709m²

SURVEY PLAN



911
(Pt)

911 (Pt)
59.86ha
(67.2248ha)
Total Area

DIAGRAM
Scale 1:1500

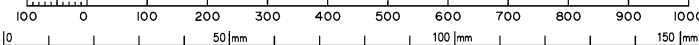
In accordance with Section 3.22 of the Cadastral Survey Requirements, corners have not been marked. For corner marks and reference marks see IS318250.

For Reference Marks, Permanent Marks & MGA Coordinates tabulations, see sheet 3.

Original information compiled from SP335853 in the Department of Resources.

Lots 2277-2284, 2301-2306 & 2309-2312, see sheet 3
Lots 2285-2295, 2297-2300 & 2313-2314, see sheet 4

Scale 1:7500 Lengths are in Metres



VERIS AUSTRALIA PTY LTD (ACN 615 735 727) hereby certify that the land comprised in this plan was surveyed by the corporation, by Avril DORMER, surveying graduate, for whose work the corporation accepts responsibility, under the supervision of Darcy William Crompton EDWARDS, Cadastral Surveyor, and that the plan is accurate, that the said survey was performed in accordance with the Survey and Mapping Infrastructure Act 2003 and Surveyors Act 2003 and associated Regulations and Standards and that the said survey was completed on 11/01/2024.

Delegate

16/01/2024
Date

Plan of Lots 911, 2277-2295, 2297-2306 & 2309-2314

Cancelling Lot 911 on SP335853

LOCAL GOVERNMENT: Logan City Council LOCALITY: Flagstone & Silverbark Ridge

Meridian: MGA Zone 56 Vide SP335853

Survey Records: Yes

Scale: 1:7500

Format: STANDARD



SP340300

430109-15031

723111979

EL 400 \$4,711.77
08/03/2024 08:34:53

(Dealing No.)

**WARNING : Folded or Mutilated Plans will not be accepted.
Plans may be rolled.
Information may not be placed in the outer margins.**

4. Lodged by

(Include address, phone number, email, reference, and Lodger Code)

1. Existing		Created		
Title Reference	Description	New Lots	Road	Secondary Interests
51339352	Lot 911 on SP335853	911, 2277-2295, 2297-2306 & 2309-2314	New Rd	-

ENCUMBRANCE EASEMENT ALLOCATIONS

Easement	Lots to be Encumbered
722099745 (Emt EX on SP338140)	911
722099746 (Emt EW on SP338140)	911
722322923 (Emt GG on SP339276)	911

MORTGAGE ALLOCATIONS

Mortgage	Lots Fully Encumbered	Lots Partially Encumbered
722151745	911, 2277-2295, 2297-2306 & 2309-2314	

ADMINISTRATIVE ADVICE ALLOCATIONS

Administrative Advice	Lots to be Encumbered
711464446	911, 2277-2295, 2297-2306 & 2309-2314
712298369	911, 2277-2295, 2297-2306 & 2309-2314

Reinstatement Report:

- This survey accepts the principles of reinstatement as applied on SP335853.
- This plan is part of a staged development and follows on from SP335853 with no variation.

911, 2277-2295,
2297-2306 & 2309-2314

Por 24

Lots

Orig

2. Orig Grant Allocation:

3. References :

Dept File :
Local Govt :
Surveyor : 430109-15031 Survey Advice: 2015-0806

5. Passed & Endorsed :

By : Veris Australia Pty Ltd
Date : 16/01/2024
Signed : 
Designation : Delegate

6. Building Format Plans only.

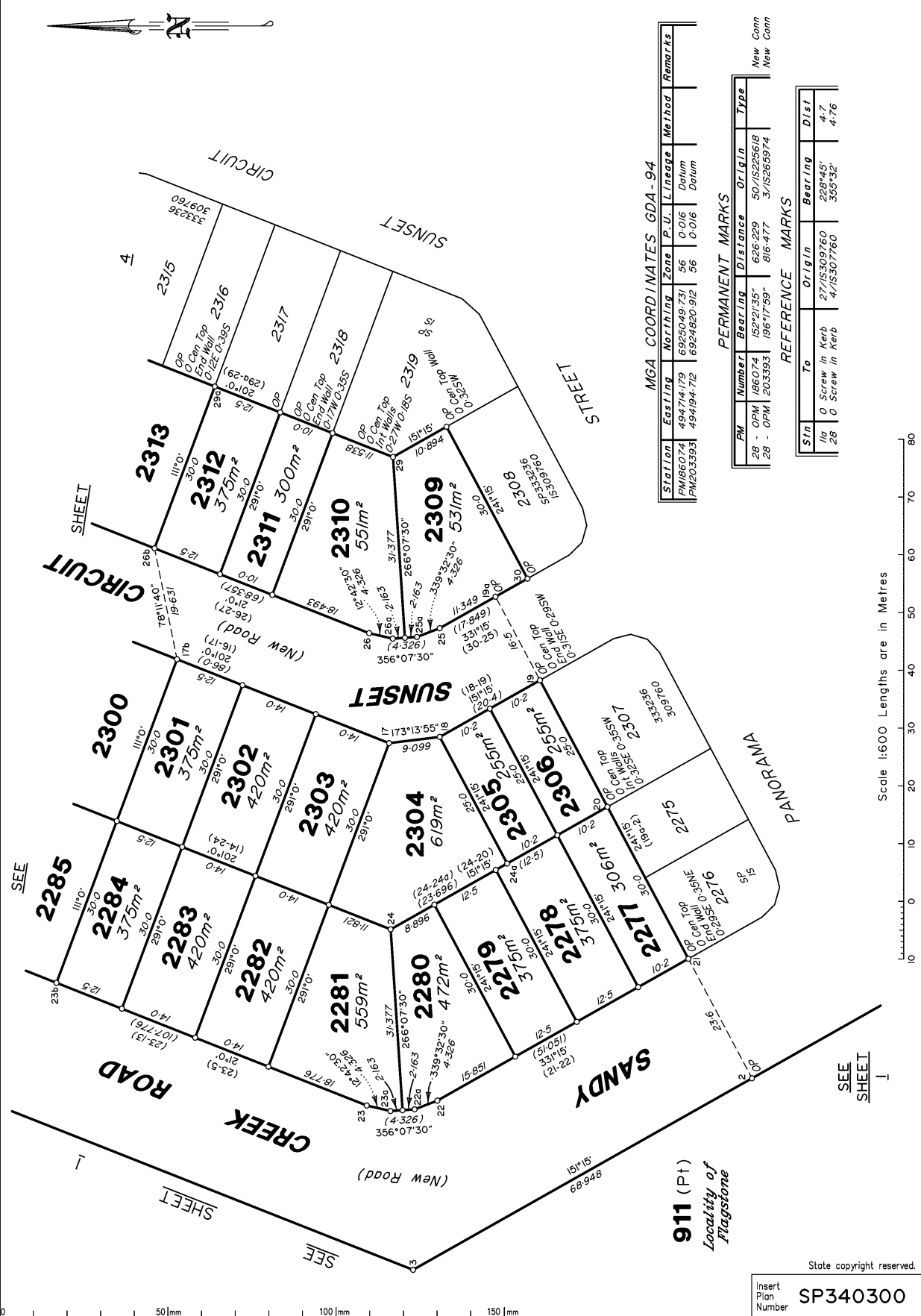
I certify that :
* As far as it is practical to determine, no part of the building shown on this plan encroaches onto adjoining lots or road.
* Part of the building shown on this plan encroaches onto adjoining * lots and road

.....
Cadastral Surveyor/Delegate * Date
*delete words not required

7. Lodgement Fees :

Survey Deposit \$
Lodgement \$
..... New Titles \$
Photocopy \$
Postage \$
TOTAL \$

8. Insert Plan Number **SP340300**



MGA COORDINATES GDA-94

Station	Easting	Northing	Zone	P. U.	Lineage	Method	Remarks
PM186074	494744.179	6925049.731	56	0.016	Datum		
PM203383	494184.72	6924820.912	56	0.016	Datum		

PERMANENT MARKS

P.W.	Number	Bearing	Distance	Origin	Type
28	OPM	152°21'35"	626.229	50/15225618	New Conn
28	OPM	196°17'59"	816.477	3/15265974	New Conn

REFERENCE MARKS

Stn	To	Origin	Bearing	Dist
11g	Screw in Kerb	27/15309760	289°45'	4.7
2B	Screw in Kerb	44/15307760	355°32'	4.76

Scale 1:600 Lengths are in Metres

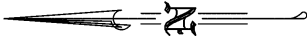
911 (Pt)
Locality of
Flagstone

State copyright reserved.

Insert Plan Number
SP340300

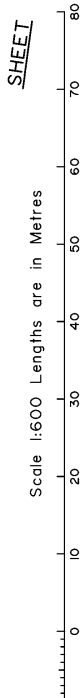
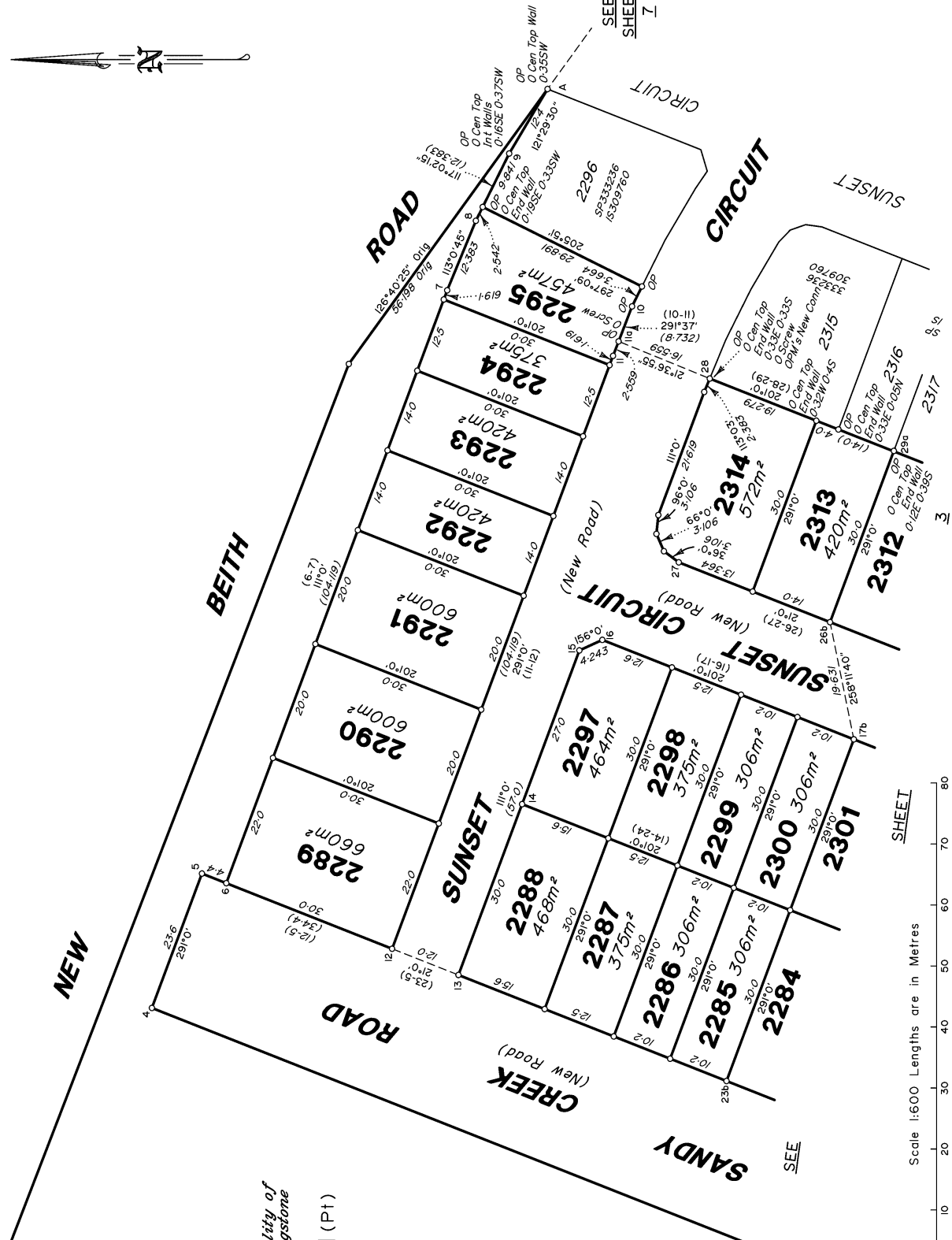
0 50mm 100mm 150mm

430109-16031

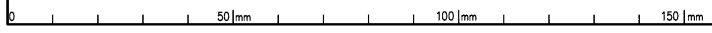


SEE SHEET I

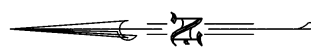
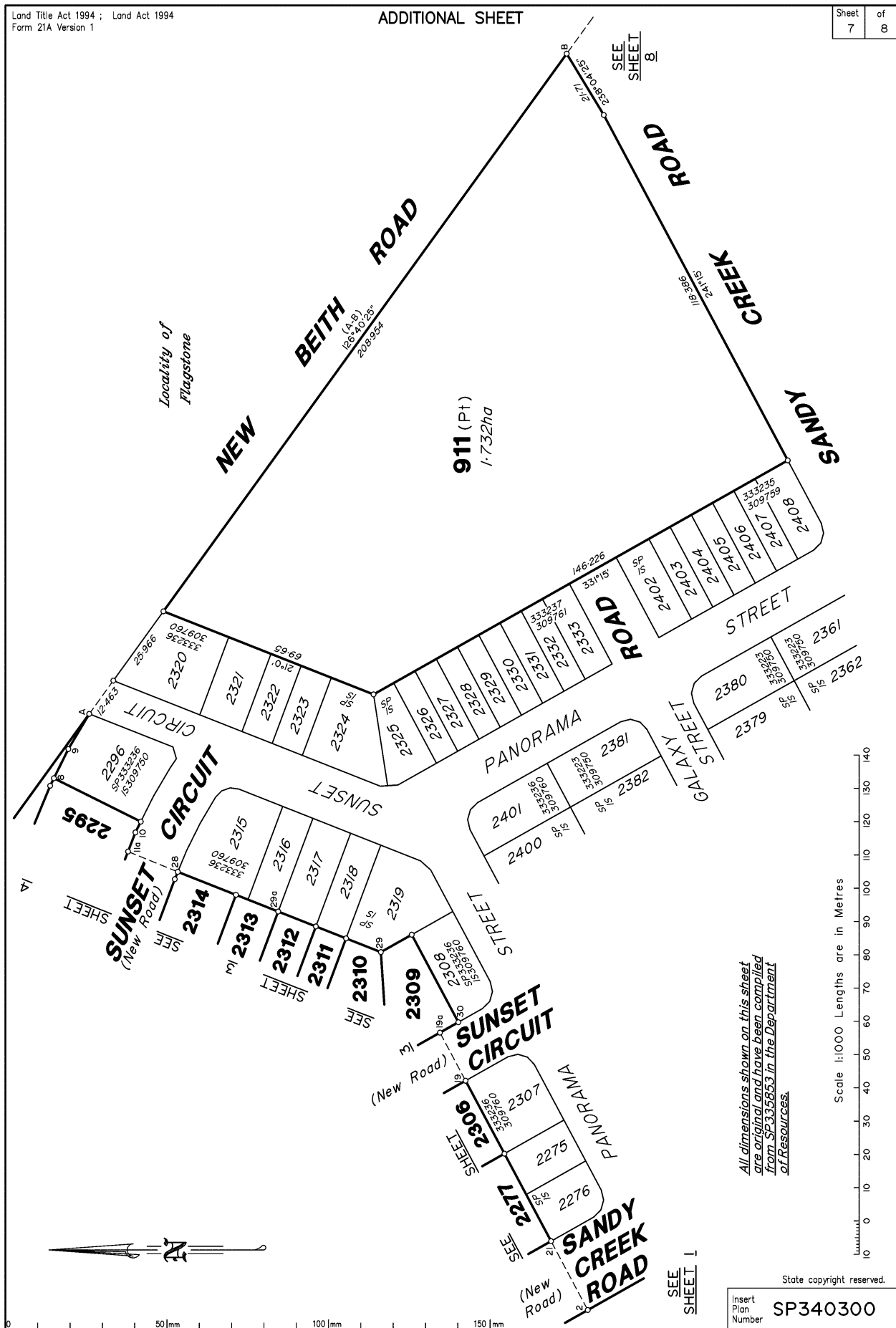
Locality of Flagstone
911 (P1)



State copyright reserved.
Insert Plan Number SP340300



43010915031



0 50mm 100mm 150mm

Scale 1:1000 Lengths are in Metres

All dimensions shown on this sheet are original and have been compiled from SP335853 in the Department of Resources.

State copyright reserved.

Insert Plan Number SP340300

430109-16031

SEE SHEET 1

SEE SHEET 8

Locality of Flagstone

911 (Pt)
1.732ha

SEE SHEET 1

SEE SHEET 1

SEE SHEET 1

SEE SHEET 1

SEE SHEET 1

SEE SHEET 1

SEE SHEET 1

SEE SHEET 1

SEE SHEET 1

SEE SHEET 1

SEE SHEET 1

SEE SHEET 1

SEE SHEET 1

SEE SHEET 1

SEE SHEET 1

SEE SHEET 1

SEE SHEET 1

SEE SHEET 1

SEE SHEET 1

SEE SHEET 1

SEE SHEET 1

SEE SHEET 1

SEE SHEET 1

SEE SHEET 1

SEE SHEET 1

SEE SHEET 1

SEE SHEET 1

SEE SHEET 1

SEE SHEET 1

SEE SHEET 1

SEE SHEET 1

SEE SHEET 1

SEE SHEET 1

SEE SHEET 1

SEE SHEET 1

SEE SHEET 1

SEE SHEET 1

SEE SHEET 1

SEE SHEET 1

SEE SHEET 1

SEE SHEET 1

SEE SHEET 1

SEE SHEET 1

SEE SHEET 1



SEE SHEET 7
911 (Pt)
SANDY CREEK ROAD

NEW

BEITH ROAD

Locality of Flagstone

FLAGSTONIAN DRIVE

911 (Pt)
2328m²

1046

1045

1044

1043

1042

1041

1040

1039

1038

1037

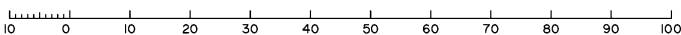
1036

1035

1034

All dimensions shown on this sheet are original and have been compiled from SP335853 in the Department of Resources.

Scale 1:750 Lengths are in Metres



State copyright reserved.

Insert Plan Number **SP340300**

430109-15031