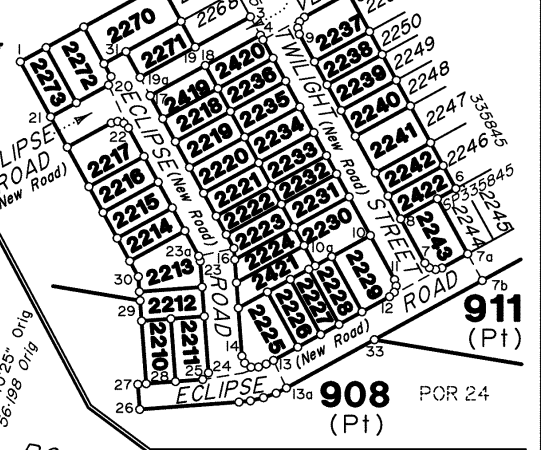
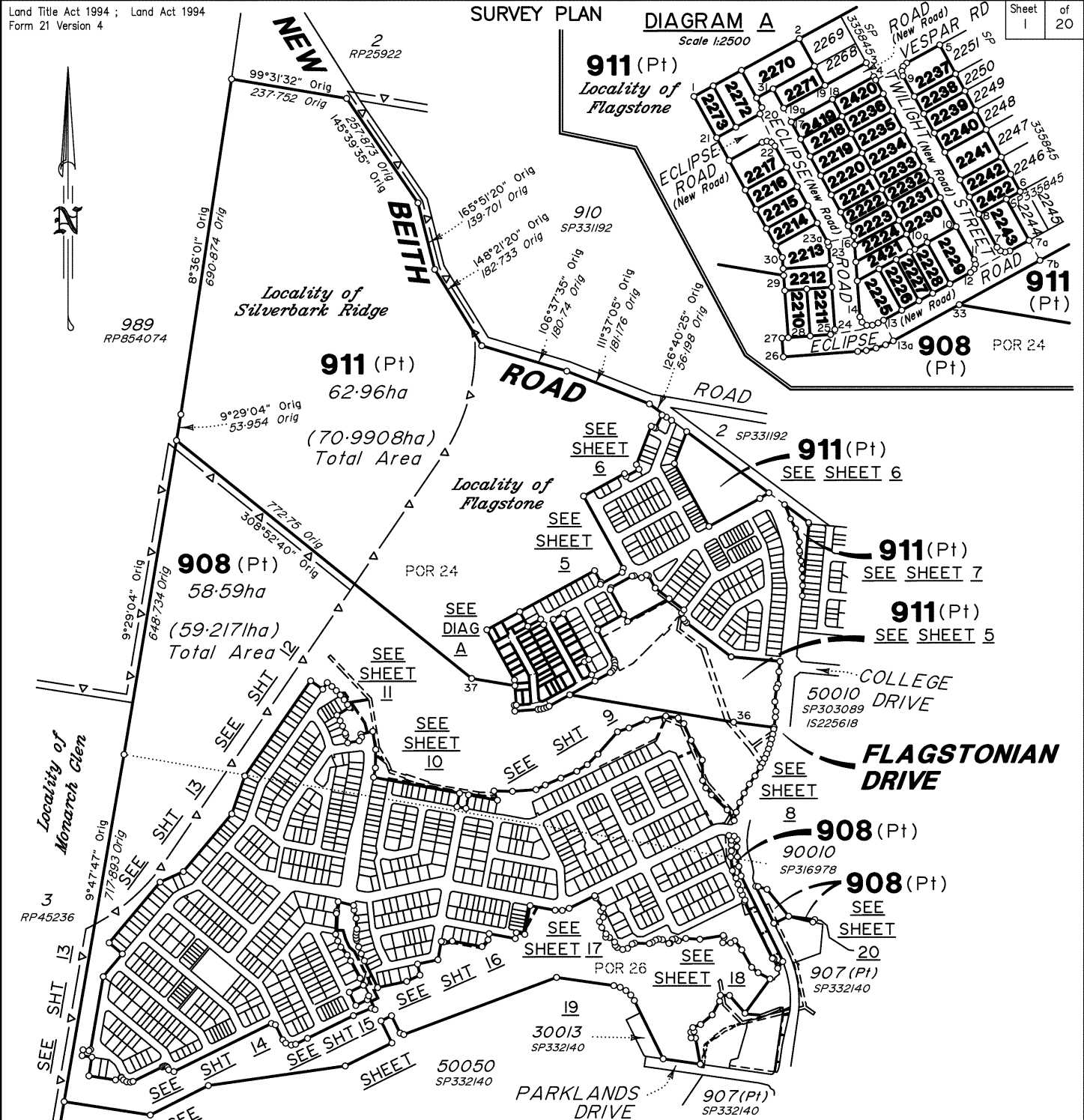


Land Title Act 1994 ; Land Act 1994  
Form 21 Version 4

**SURVEY PLAN**

**DIAGRAM A**  
Scale 1:2500

Sheet 1 of 20



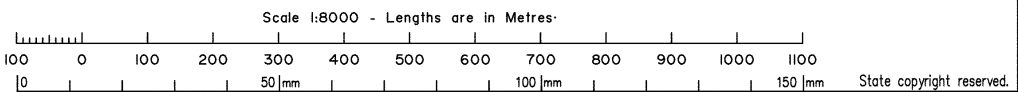
Area of New Road  
8489m<sup>2</sup>

Lots 2226 – 2243, 2420 & 2422, see sheet 3.  
Lots 2210–2225, 2270–2273, 2419 & 2421, see sheet 4.

In accordance with Section 3.22 of the  
Cadastral Survey Requirements, corners  
have not been marked. For corner marks  
and reference marks see IS311266.

Original information compiled from  
SP316978 & SP335845 in the  
Department of Resources.

For Reference Marks, Permanent Marks & MGA  
Coordinates tabulations, see sheet 5.



VERIS AUSTRALIA PTY LTD (ACN 615 735 727) hereby certify that the land comprised in this plan was surveyed by the corporation, by Hamid AZARI, surveying graduate, for whose work the corporation accepts responsibility, under the supervision of Darcy William Crompton EDWARDS, Cadastral Surveyor, and that the plan is accurate, that the said survey was performed in accordance with the Survey and Mapping Infrastructure Act 2003 and Surveyors Act 2003 and associated Regulations and Standards and that the said survey was completed on 24/04/2023.

*P.J. Amphlett*  
Delegated

28/04/2023  
Date

**Plan of Lots 908, 911, 2210–2243,  
2270–2273 & 2419–2422**

**Cancelling Lot 908 on SP316978 & Lot 911 on SP335845**

LOCAL GOVERNMENT: Logan City Council LOCALITY: SILVERBARK RIDGE

Meridian: MGA Zone 56 Vide SP335845

Survey Records: Yes

Scale: 1:8000

Format: STANDARD

**SP335852**

**WARNING : Folded or Mutilated Plans will not be accepted.  
Plans may be rolled.  
Information may not be placed in the outer margins.**

**722464786**

**EL 400 \$5,488.70  
10/05/2023 14:37:01**

(Dealing No.)

4. Lodged by

(Include address, phone number, email, reference, and Lodger Code)

1. Existing		Created		
Title Reference	Description	New Lots	Road	Secondary Interests
51256257 To Issue	Lot 908 on SP316978 Lot 911 on SP335845	908, 2210-2212 & 2225-2227 911, 2212-2243, 2270-2273 & 2419-2422	New Rd New Rd	- -

**ENCUMBRANCE EASEMENT ALLOCATIONS**

Easement	Lots to be Encumbered
717639066 (Emt EC on SP290305)	908
717705641 (Emt I on SP286449)	908
718068703 (Emt AW on SP290278)	908
718068703 (Emt AX on SP290278)	908
718377379 (Emt AJ on SP296712)	908
718377379 (Emt AY on SP296712)	908
718377452 (Emt BA on SP297757)	908
718426421 (Emt BC on SP300657)	908
718426421 (Emt BD on SP300657)	908
718907858 (Emt BO on SP303166)	908
719213390 (Emt ED on SP307949)	908
719213390 (Emt EH on SP307949)	908
719213390 (Emt EJ on SP307949)	908
719433955 (Emt DG on SP303134)	908
719433959 (Emt DH on SP303134)	908
719433994 (Emt CP on SP307888)	908
719433995 (Emt CL on SP307888)	908
720009321 (Emt DD on SP311427)	908
720037701 (Emt DO on SP315465)	908
720037704 (Emt DP on SP315465)	908
720037705 (Emt DQ on SP315465)	908
720163343 (Emt DR on SP315466)	908
722099745 (Emt EX on SP338140)	911
722099746 (Emt EV on SP338140)	908
722099746 (Emt EW on SP338140)	911
722322923 (Emt GG on SP339276)	911

**MORTGAGE ALLOCATIONS**

Mortgage	Lots Fully Encumbered	Lots Partially Encumbered
722151745	908, 911, 2210-2243, 2270-2273, & 2419-2422	

**ADMINISTRATIVE ADVICE ALLOCATIONS**

Administrative Advice	Lots to be Encumbered
711464446	908, 911, 2210-2243, 2270-2273 & 2419-2422
712298369	908, 911, 2210-2243, 2270-2273 & 2419-2422
713408554	908, 2210-2212 & 2225-2227

**Reinstatement Report:**

*This survey accepts the principles of reinstatement as applied on SP316978, SP335845 & SP338140*

*This plan is part of a staged development and follows on from SP316978 & SP335845 with no variation.*

*SP335845 is to register prior to the lodgement of this plan*

908	Por. 24 Parish of Maclean Por. 26 Parish of Undullah
911, 2210-2243, 2270-2273 & 2419-2422	Por. 24 Parish of Maclean
Lots	Orig

2. Orig Grant Allocation:

3. References :  
Dept File :  
Local Govt :  
Surveyor : 430109-15121 Survey Advice: 2015-0806

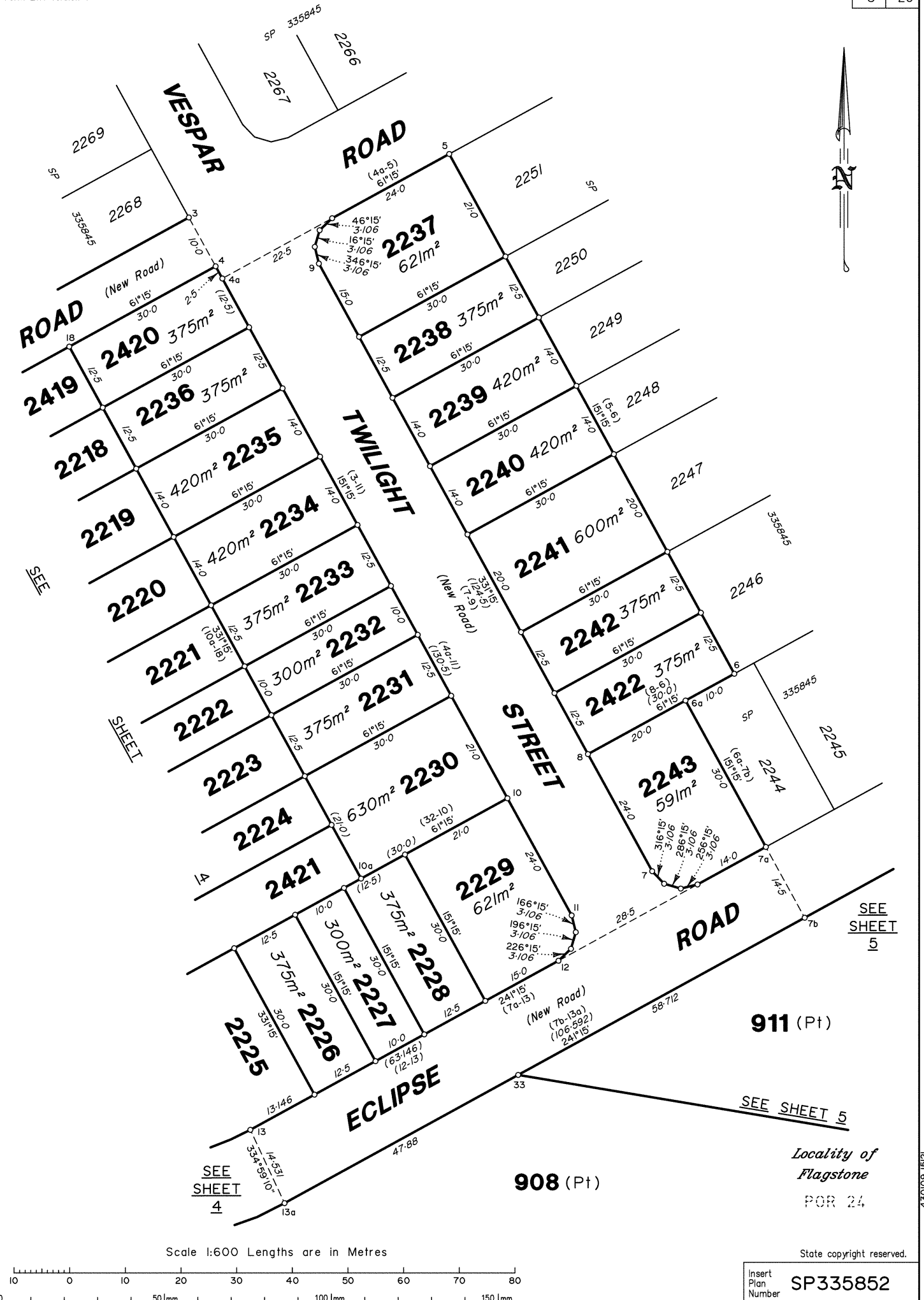
5. Passed & Endorsed :

By : Veris Australia Pty Ltd  
Date : 4/05/2023 5/05/2023  
Signed : *P. J. Ansell P. J. Ansell*  
Designation: Delegate

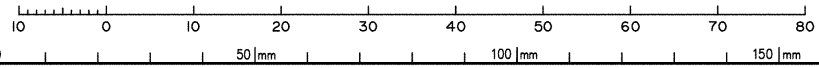
6. Building Format Plans only.  
I certify that :  
\* As far as it is practical to determine, no part of the building shown on this plan encroaches onto adjoining lots or road;  
\* Part of the building shown on this plan encroaches onto adjoining \*lots and road  
Cadastral Surveyor/Delegate \* Date  
\*delete words not required

7. Lodgement Fees :  
Survey Deposit \$ .....  
Lodgement \$ .....  
..... New Titles \$ .....  
Photocopy \$ .....  
Postage \$ .....  
TOTAL \$ .....

8. Insert Plan Number **SP335852**



Scale 1:600 Lengths are in Metres



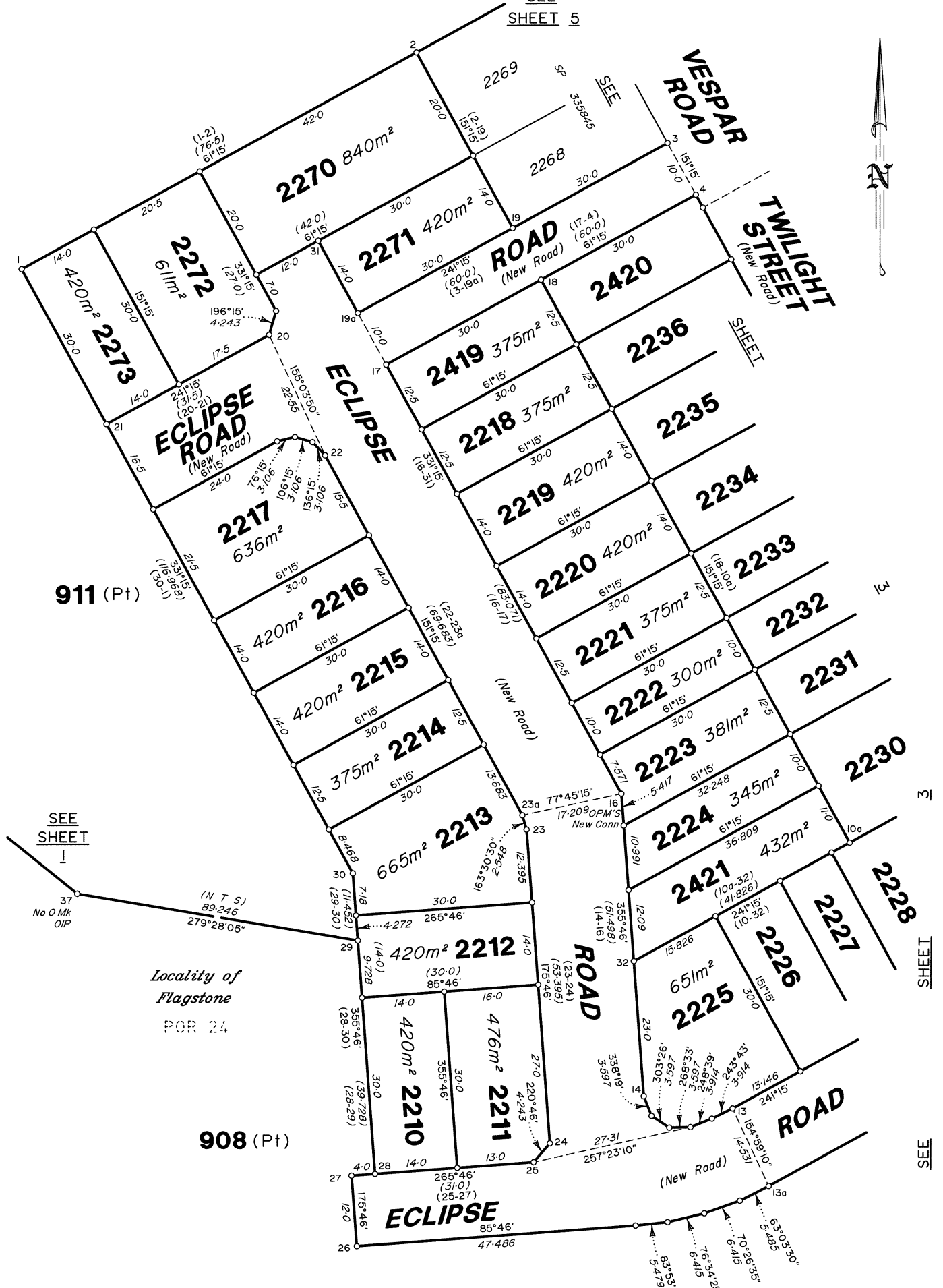
State copyright reserved.

Insert Plan Number **SP335852**

Locality of  
Flagstone  
POR 24

430109-1521

SEE SHEET 5

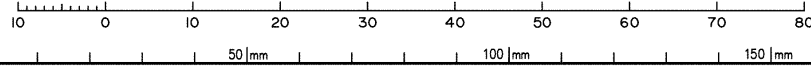


911 (Pt)

908 (Pt)

Locality of  
Flagstone  
POR 24

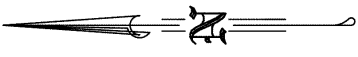
Scale 1:600 Lengths are in Metres



State copyright reserved.

Insert Plan Number SP335852

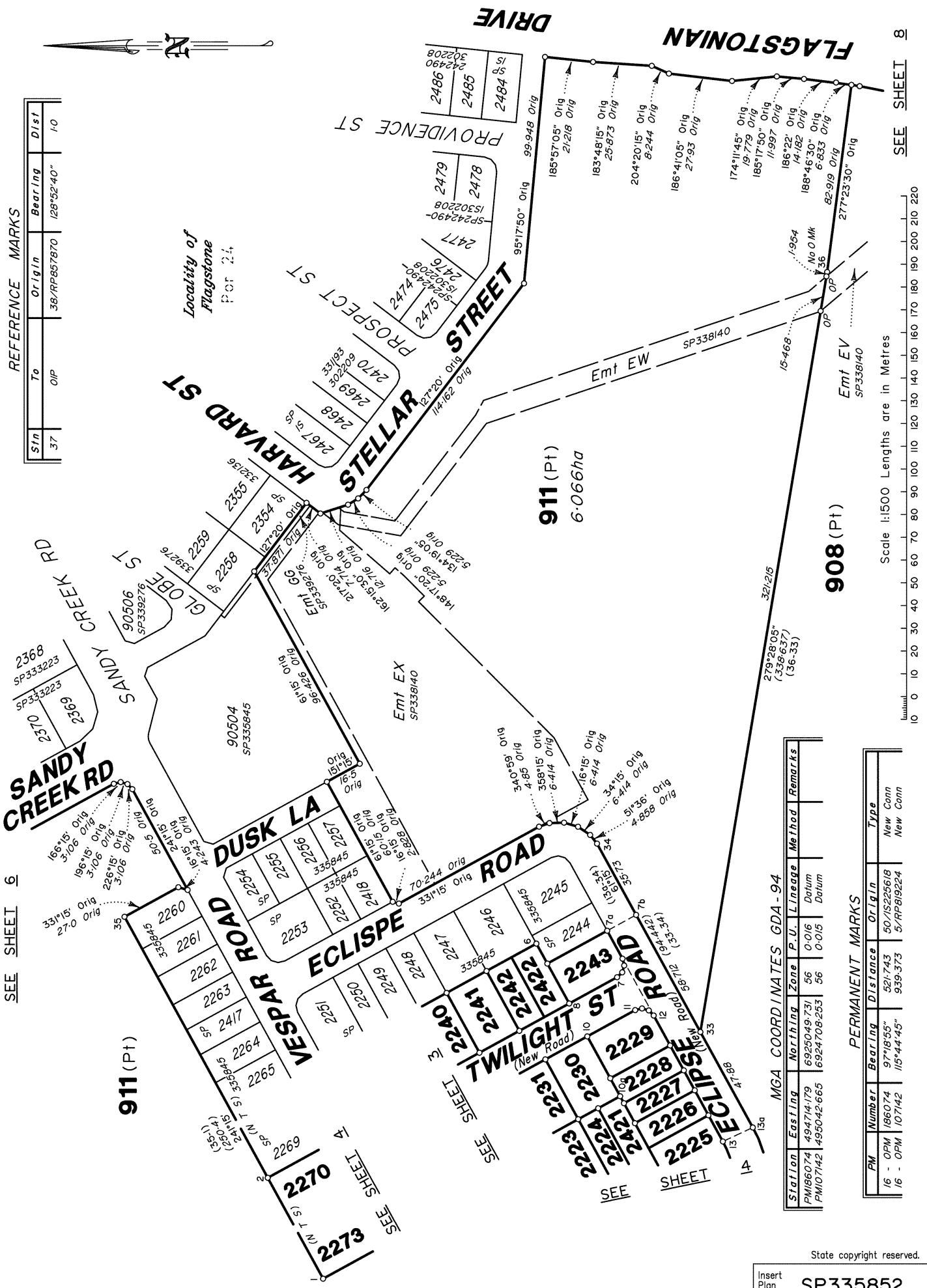
430109-1512



REFERENCE MARKS

Stn	To	Origin	Bearing	Dist
37	OIP	38/PP857870	128°52'40"	1.0

Locality of Flagstone  
Por 24

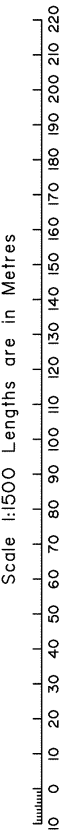


SEE SHEET 6

SEE SHEET 14

SEE SHEET 14

SEE SHEET 8



MGA COORDINATES GDA-94

Station	Easting	Northing	Zone	P.U.	Lineage	Method	Remarks
PM186074	494714.179	6925049.731	56	0.016	Datum		
PM107142	495042.665	6924708.253	56	0.015	Datum		

PERMANENT MARKS

PM	Number	Bearing	Distance	Origin	Type
16	- OPM	186°07'4"	97.1855"	521.743	50/IS225618 New Conn
16	- OPM	110°14'42"	115.44.45"	939.373	5/PP819224 New Conn

State copyright reserved.

Insert Plan Number **SP335852**

430109-1521

Locality of  
Flagstone  
For 24

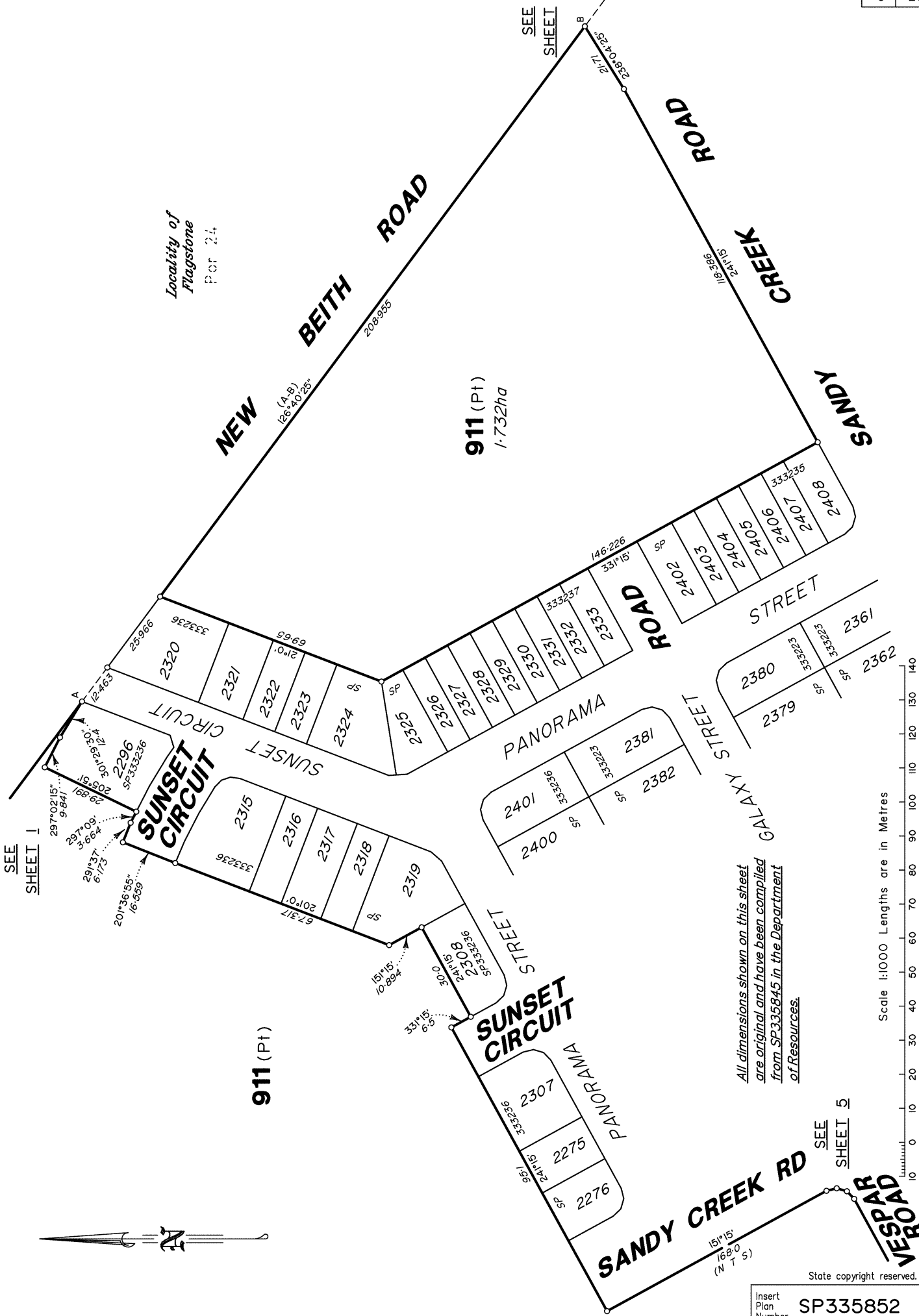
**NEW BEITH ROAD**

**911 (Pt)**  
1.732ha

**ROAD**

**CREEK**

**SANDY**



SEE SHEET 1

SEE SHEET 7

SEE SHEET 5

All dimensions shown on this sheet are original and have been compiled from SP335845 in the Department of Resources.

Scale 1:1000 Lengths are in Metres

State copyright reserved.

Insert Plan Number **SP335852**

430109-15121



SEE SHEET 6

**911**  
(Pt)  
**SANDY CREEK ROAD**

**NEW**

Locality of  
**Flagstone**  
Por 24

**BEITH**

**ROAD**

**FLAGSTONIAN**

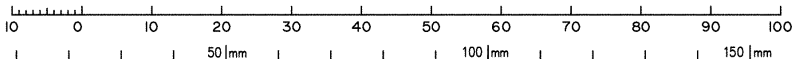
**911**  
(Pt)  
2328m<sup>2</sup>

**DRIVE**

- 1046
- 1045
- 1044
- 1043
- 1042
- 1041
- 1040
- 1039
- 1038
- 1037
- 1036
- 1035
- 1034

*All dimensions shown on this sheet  
are original and have been compiled  
from SP335845 in the Department  
of Resources.*

Scale 1:750 Lengths are in Metres



State copyright reserved.

SP335852

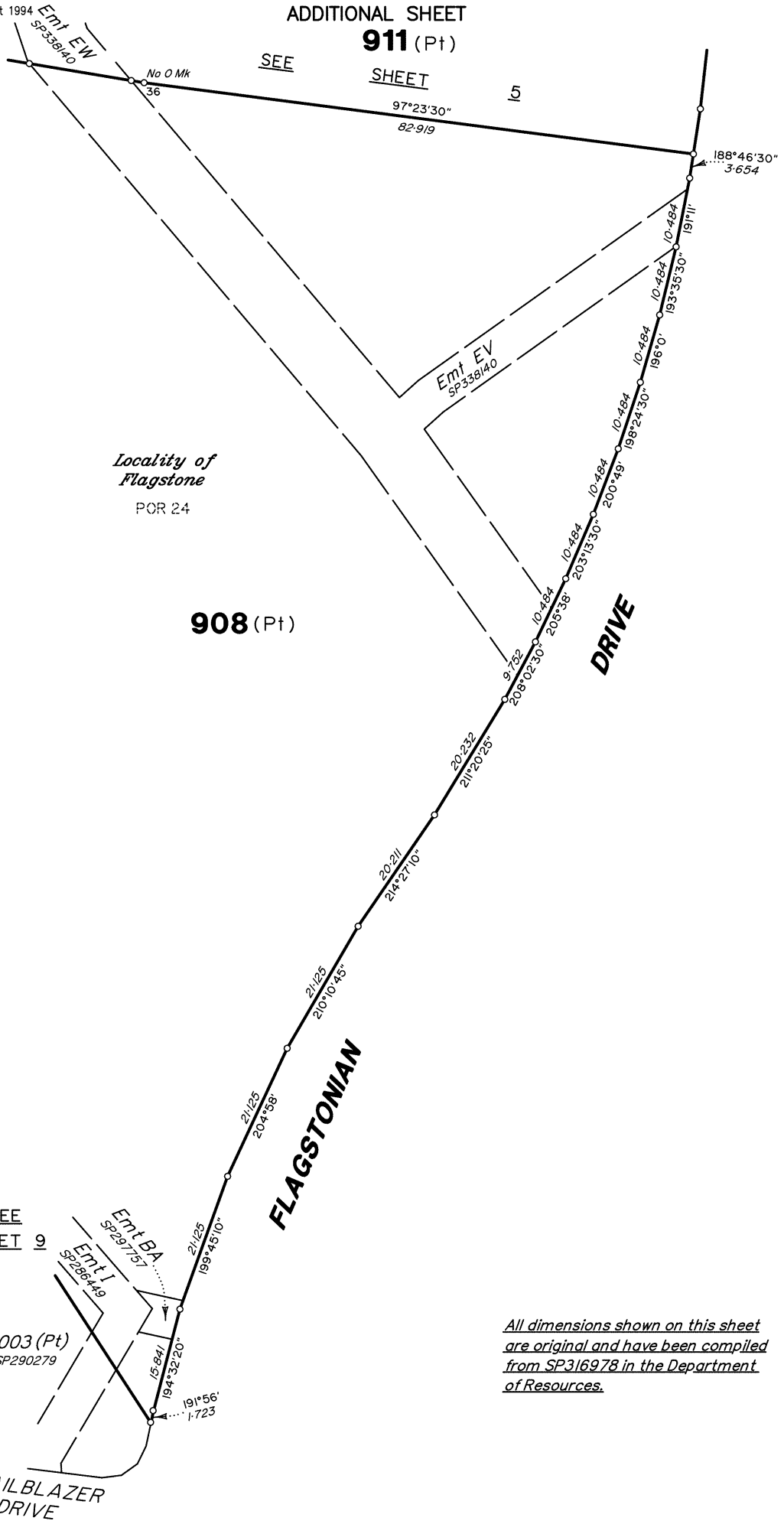
430109-15121

911 (Pt)

SEE

SHEET

5

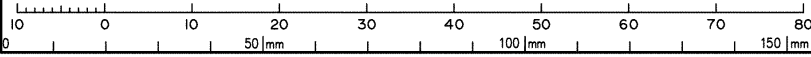


*All dimensions shown on this sheet are original and have been compiled from SP316978 in the Department of Resources.*

SEE SHEET 9

TRAILBLAZER DRIVE

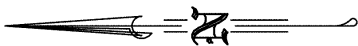
Scale 1:600 Lengths are in Metres



State copyright reserved.  
Insert Plan Number SP335852

430109-1512





**908 (Pt)**

*Locality of  
Flagstone*

POR 24

**9003 (Pt)**  
SP290279

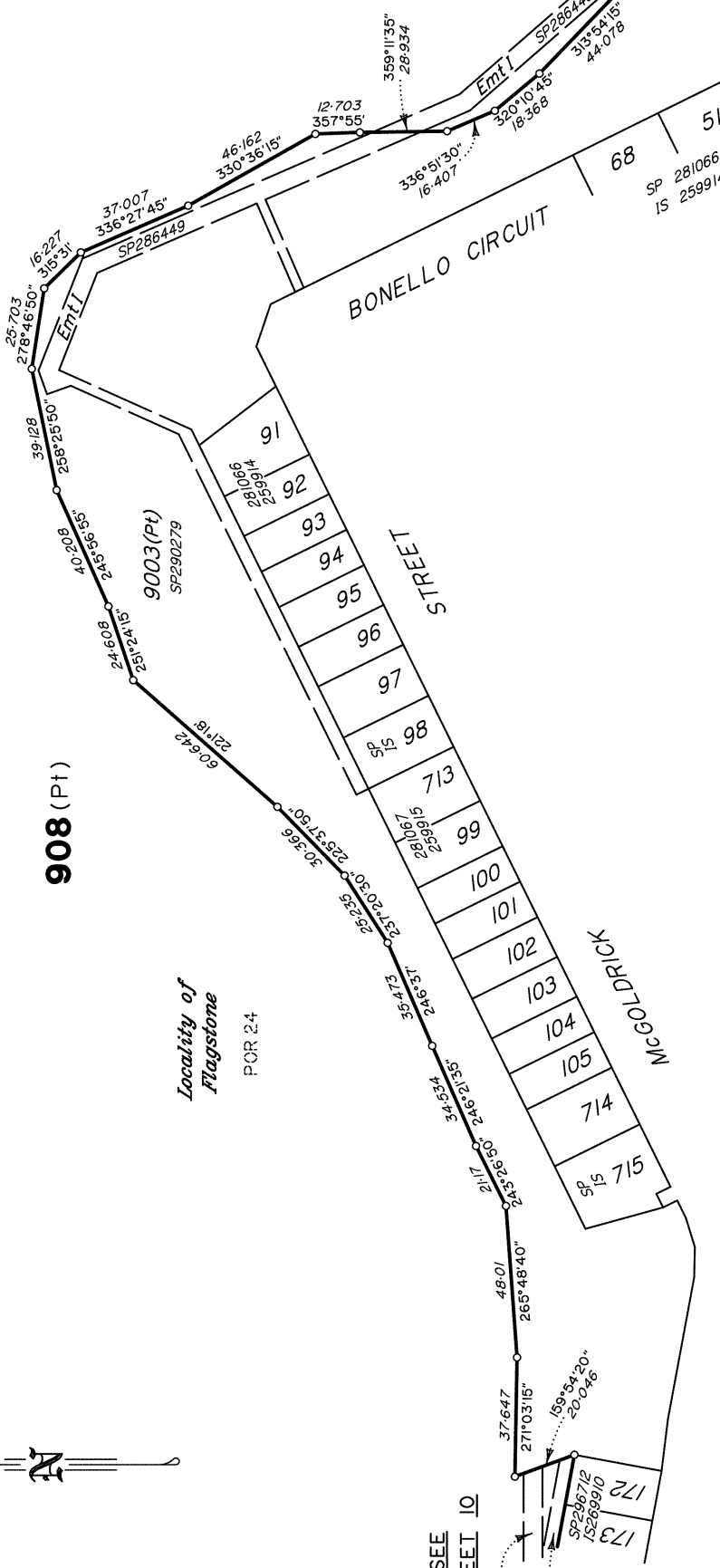
BONELLO CIRCUIT

STREET

MCGOLDRICK

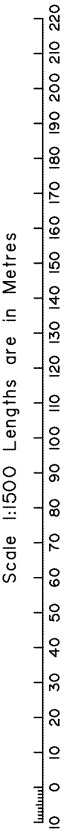
FLAGSTONIAN DRIVE

TRAILBLAZER DRIVE



SEE SHEET 10

SEE SHEET 8

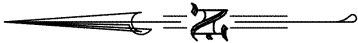


*All dimensions shown on this sheet  
are original and have been compiled  
from SP316978 in the Department  
of Resources.*

State copyright reserved.

Insert Plan Number **SP335852**

430109-1521



SEE SHEET 9

908 (Pt)

Locality of Flagstone  
POR 24

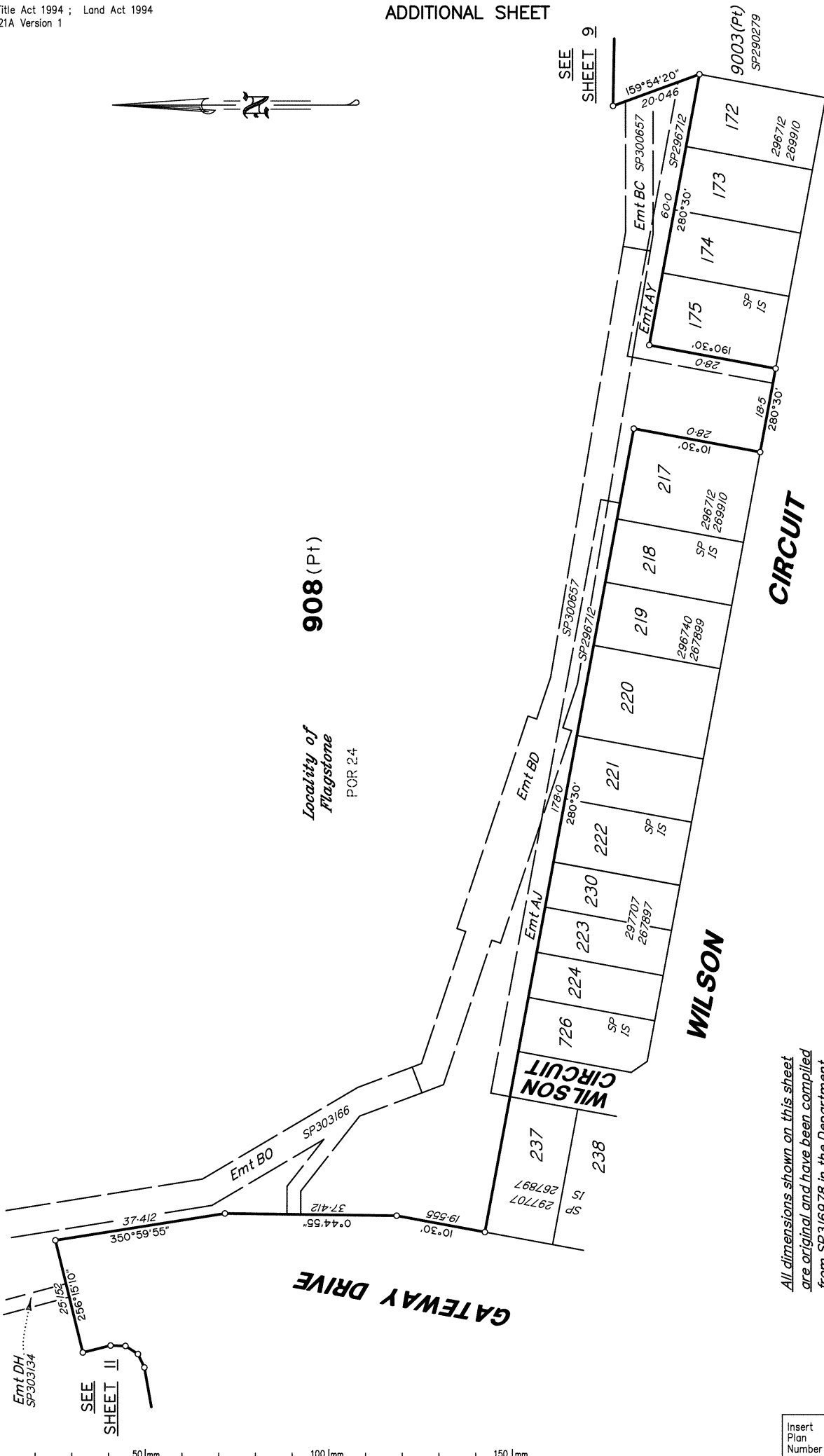
McGOLDRICK STREET

CIRCUIT

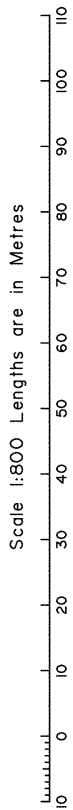
WILSON

WILSON CIRCUIT

GATEWAY DRIVE



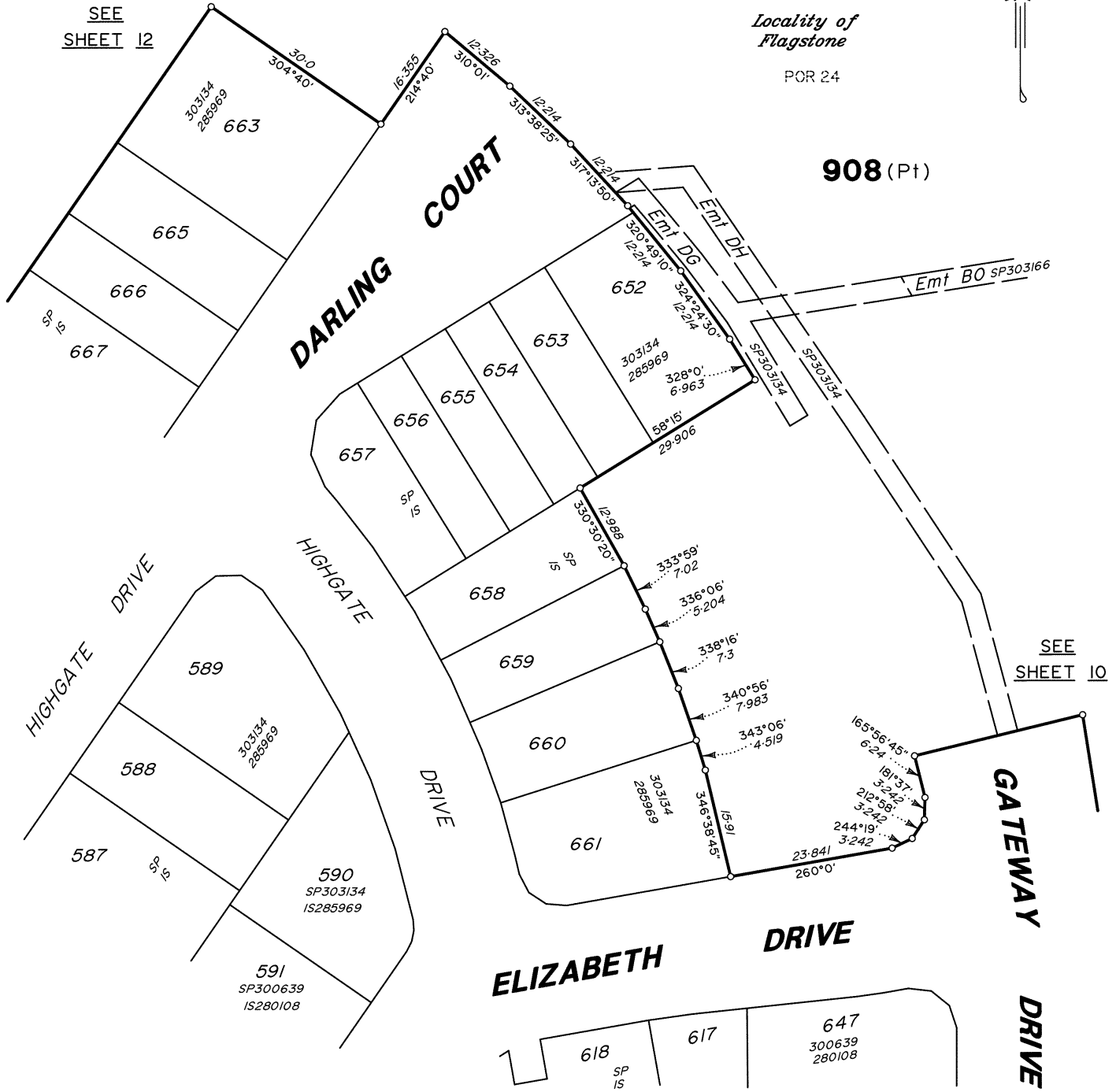
All dimensions shown on this sheet are original and have been compiled from SP316978 in the Department of Resources.



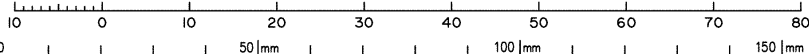
State copyright reserved.

Insert Plan Number SP335852

All dimensions shown on this sheet are original and have been compiled from SP316978 in the Department of Resources.



Scale 1:600 Lengths are in Metres



State copyright reserved.

Insert Plan Number SP335852



*All dimensions shown on this sheet  
are original and have been compiled  
from SP316978 in the Department  
of Resources.*

SEE  
SHEET 11

DARLING COURT

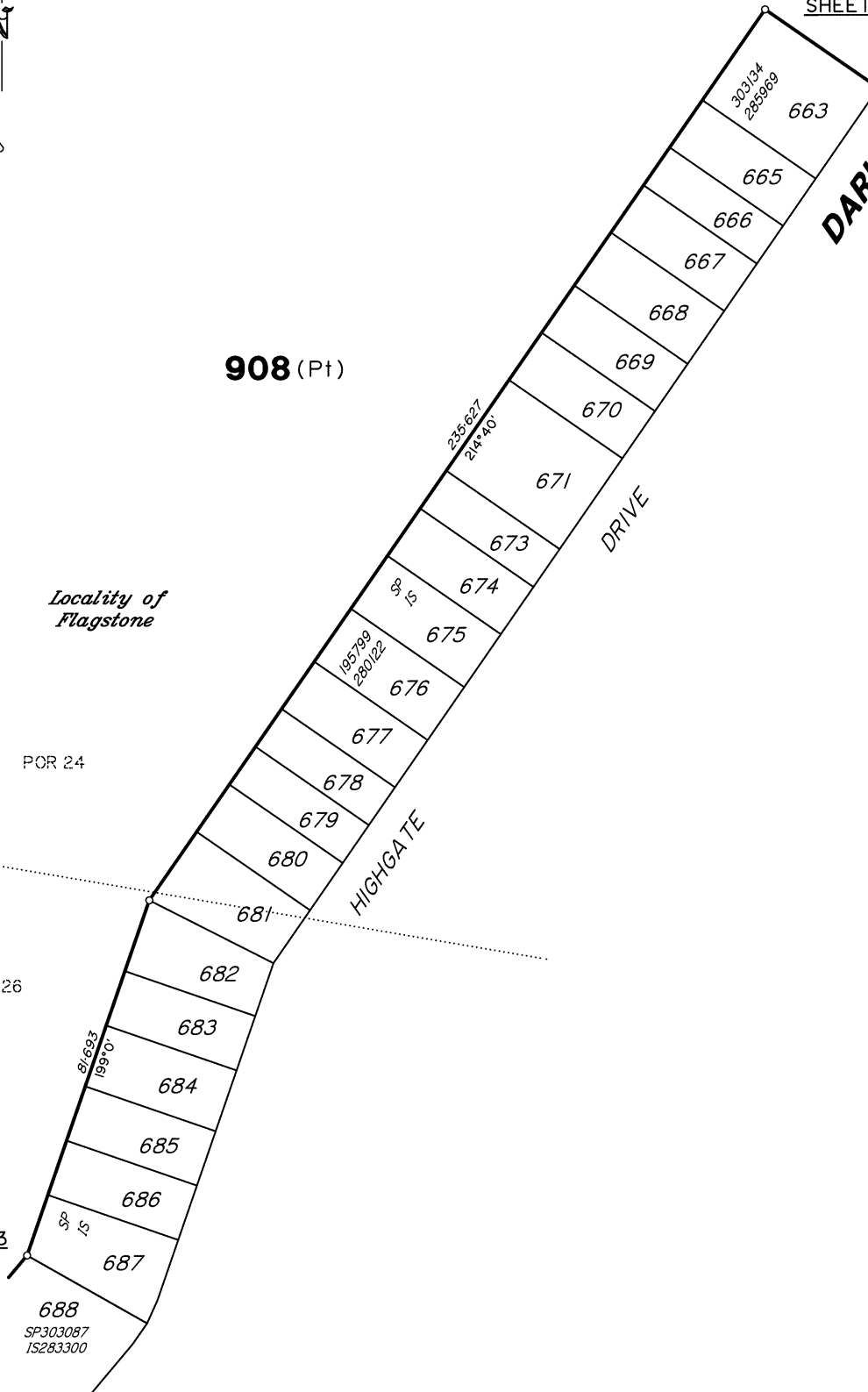
908 (Pt)

Locality of  
Flagstone

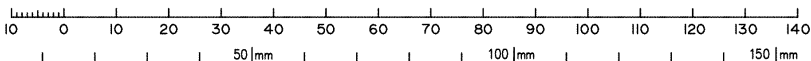
POR 24

POR 26

SEE  
SHEET 13



Scale 1:1000 Lengths are in Metres



State copyright reserved.

Insert  
Plan  
Number **SP335852**

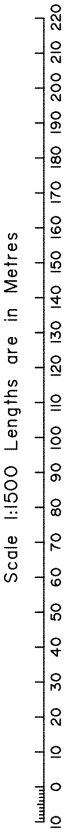
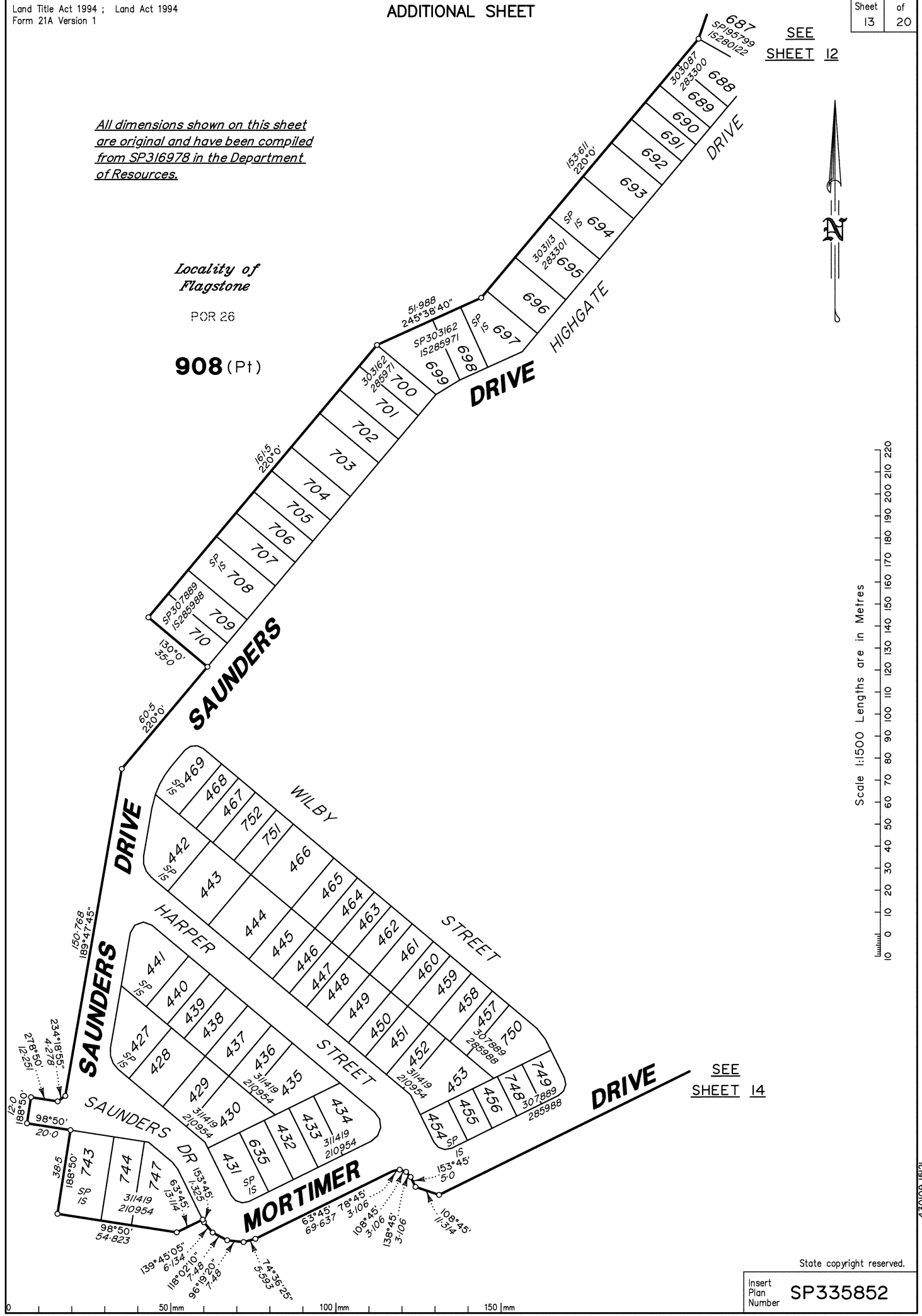
SEE SHEET 12

*All dimensions shown on this sheet are original and have been compiled from SP316978 in the Department of Resources.*

Locality of Flagstone

POR 26

908 (Pt)

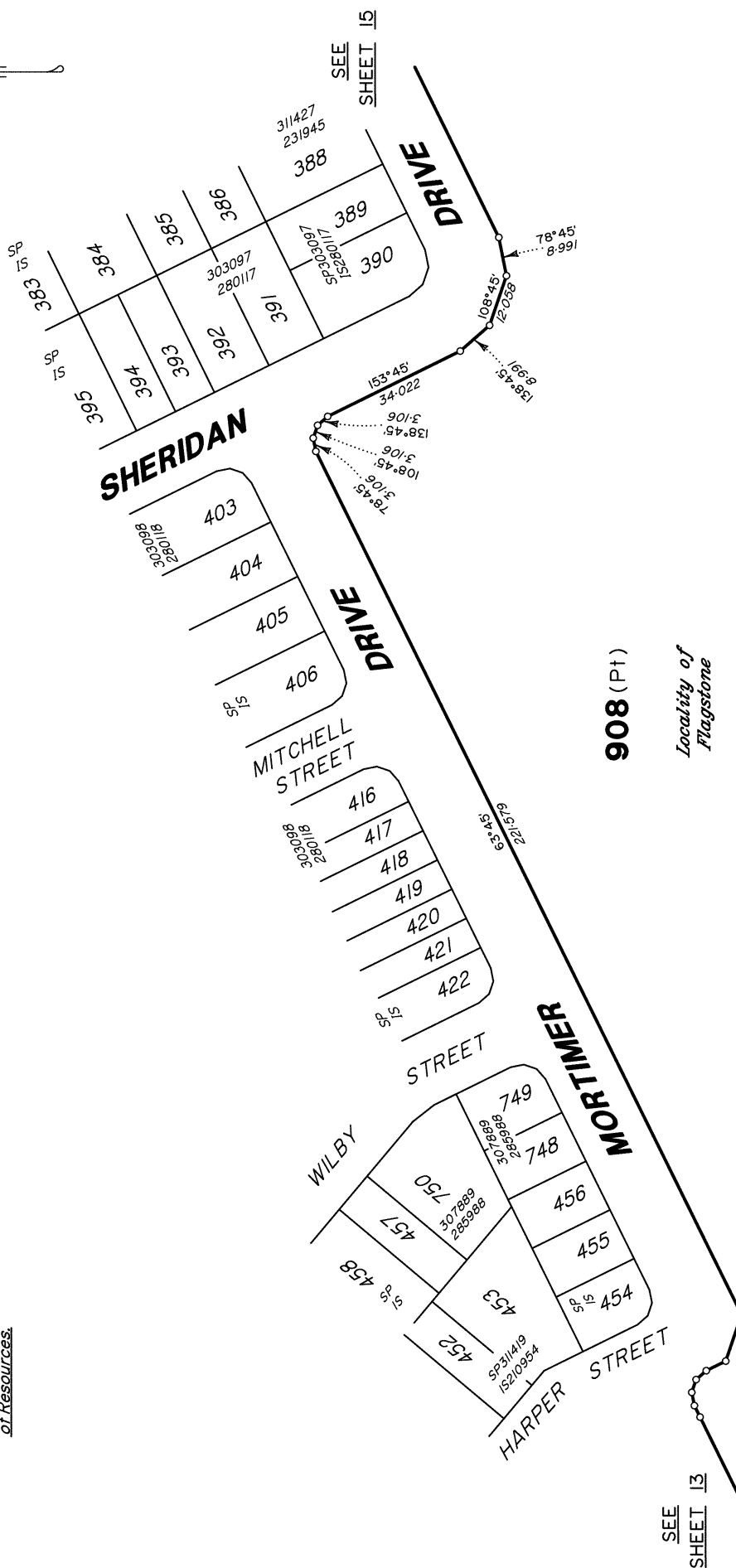
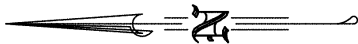


SEE SHEET 14

State copyright reserved.

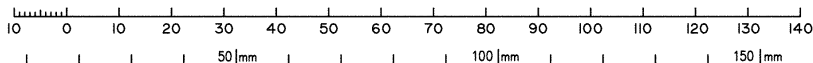
Insert Plan Number SP335852

430109-15121



*All dimensions shown on this sheet are original and have been compiled from SP316978 in the Department of Resources.*

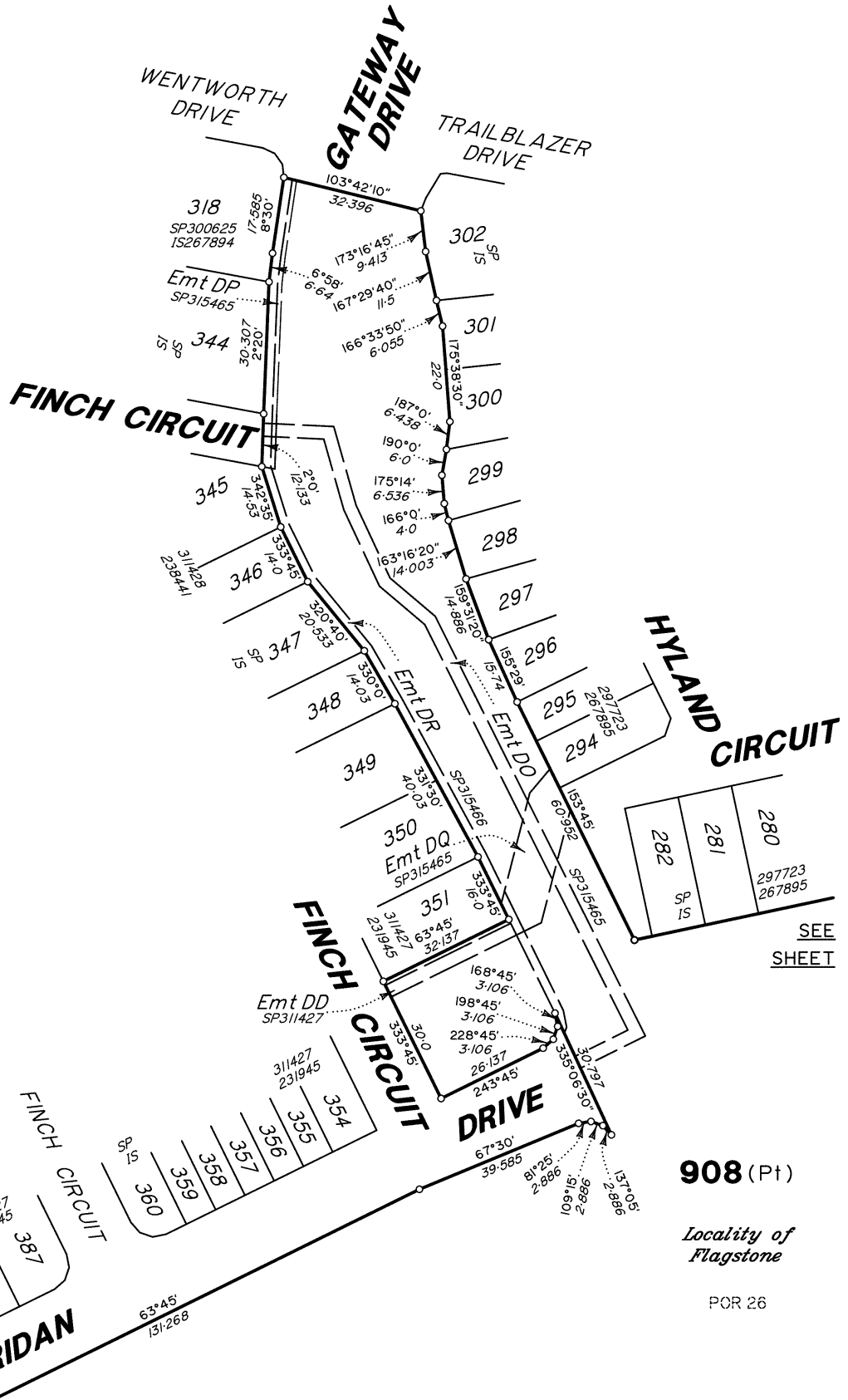
Scale 1:1000 Lengths are in Metres



State copyright reserved.

Insert Plan Number **SP335852**

430109-1521



280	297723
281	267895
282	SP 15

SEE SHEET 16

SEE SHEET 14

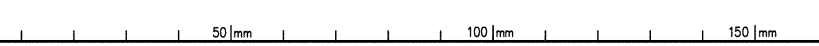
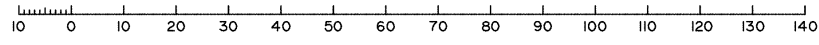
908 (Pt)

Locality of Flagstone

POR 26

All dimensions shown on this sheet are original and have been compiled from SP316978 in the Department of Resources.

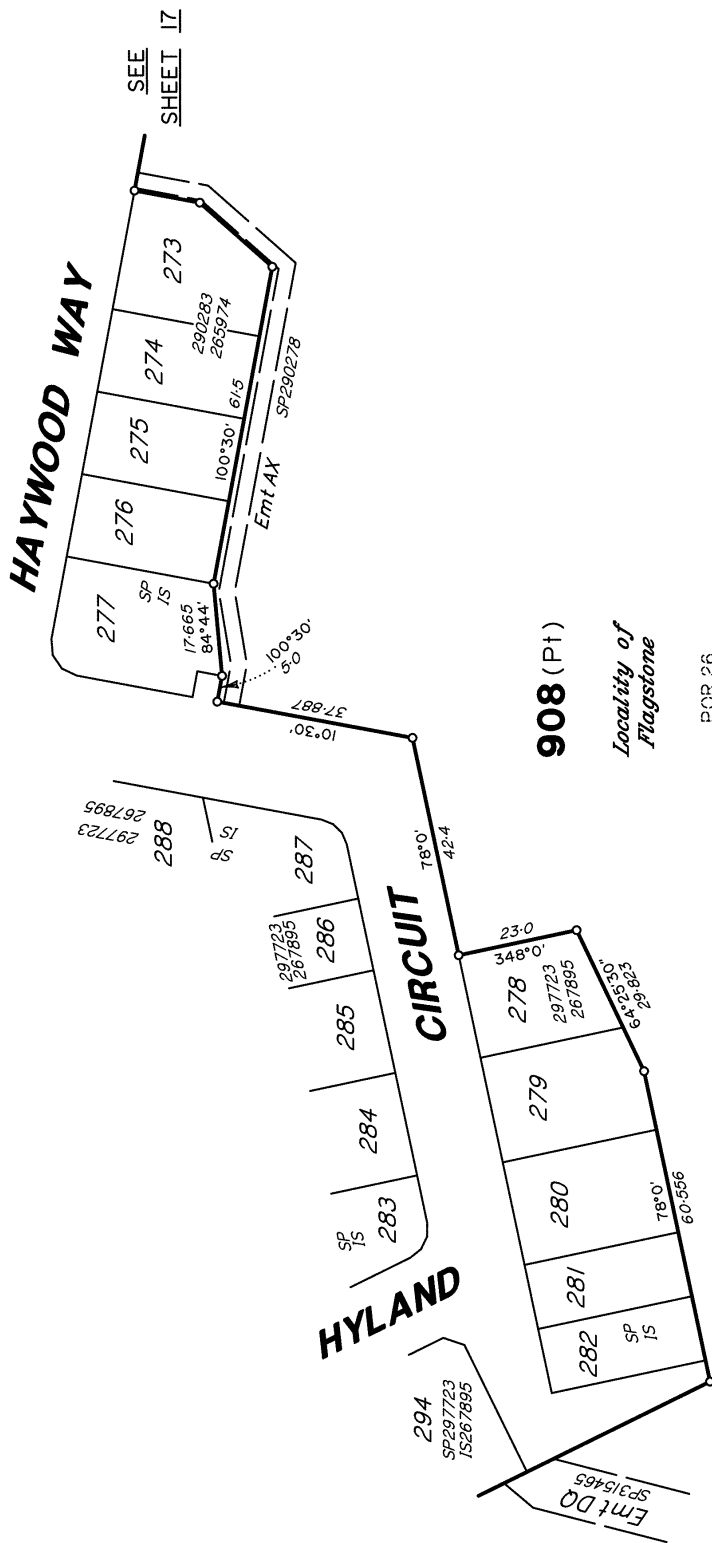
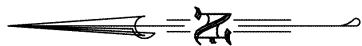
Scale 1:1000 Lengths are in Metres



State copyright reserved.

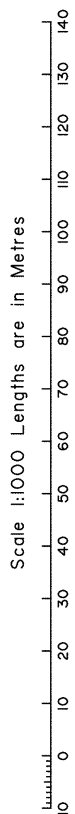
Insert Plan Number SP335852

430109-1521

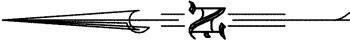


*All dimensions shown on this sheet are original and have been compiled from SP316978 in the Department of Resources.*

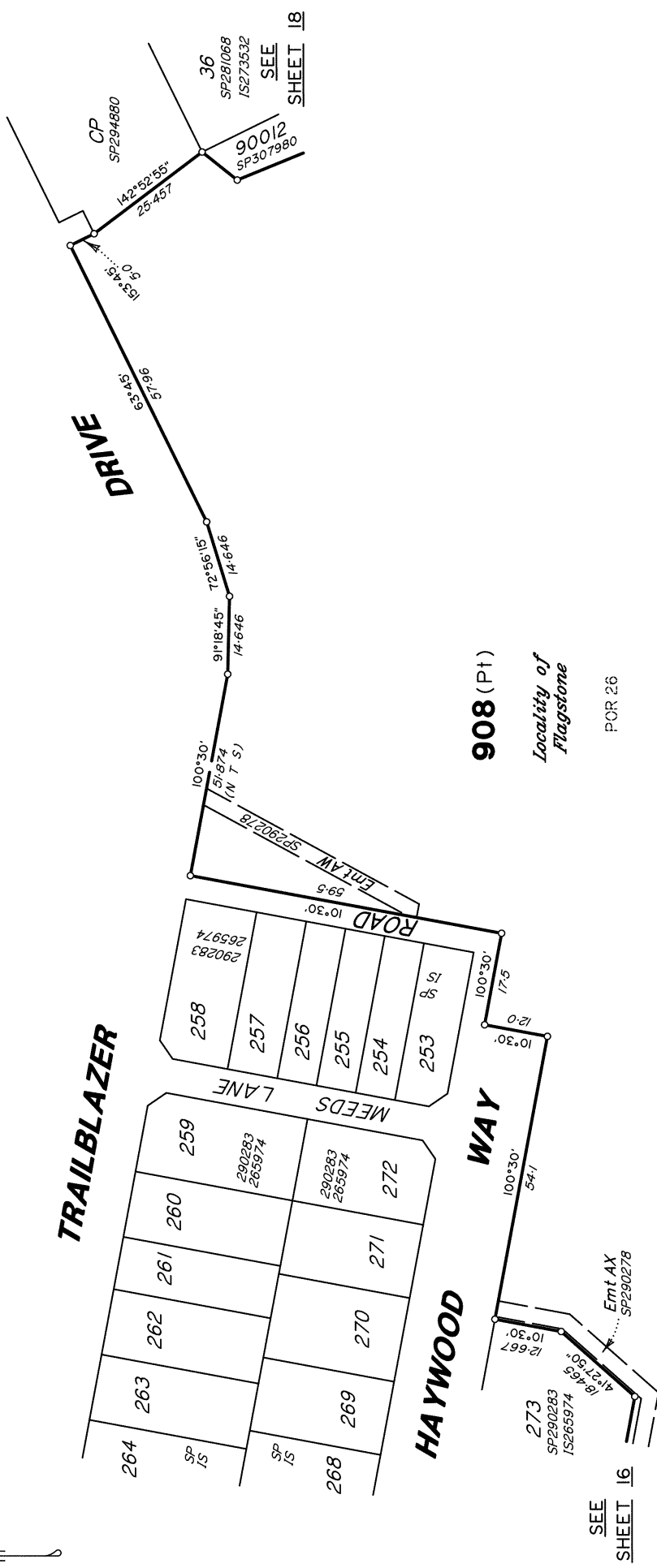
POR 26







50 mm      100 mm      150 mm



**908 (Pt)**  
*Locality of Flagstone*  
POR 26

*All dimensions shown on this sheet are original and have been compiled from SP316978 in the Department of Resources.*

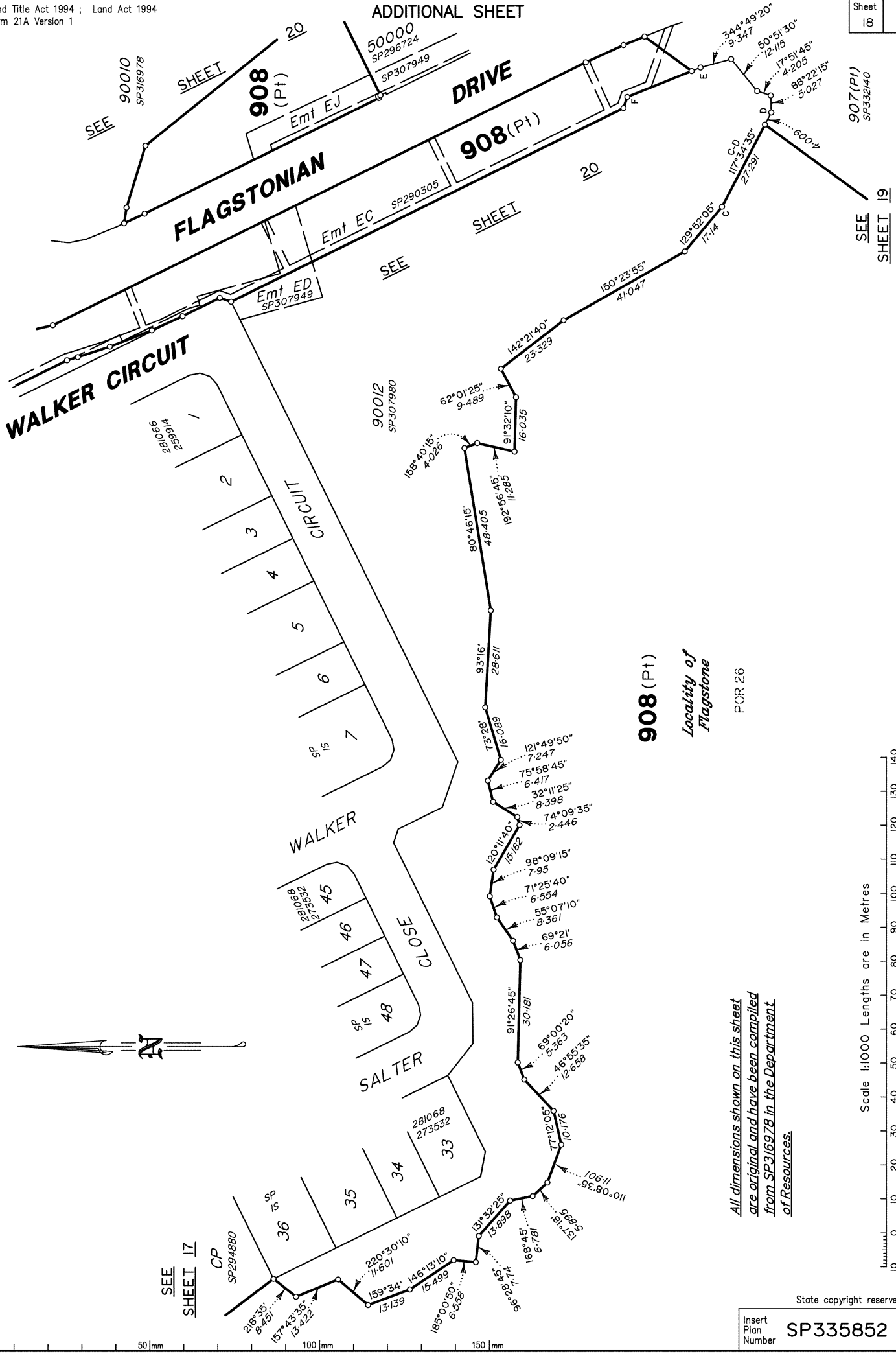
SEE SHEET 16

Scale 1:800 Lengths are in Metres

State copyright reserved.  
Insert Plan Number **SP335852**

430109-1512

ADDITIONAL SHEET



**908 (Pt)**

Locality of  
Flagstone

PCR 26

*All dimensions shown on this sheet  
are original and have been compiled  
from SP316978 in the Department  
of Resources.*

Scale 1:1000 Lengths are in Metres

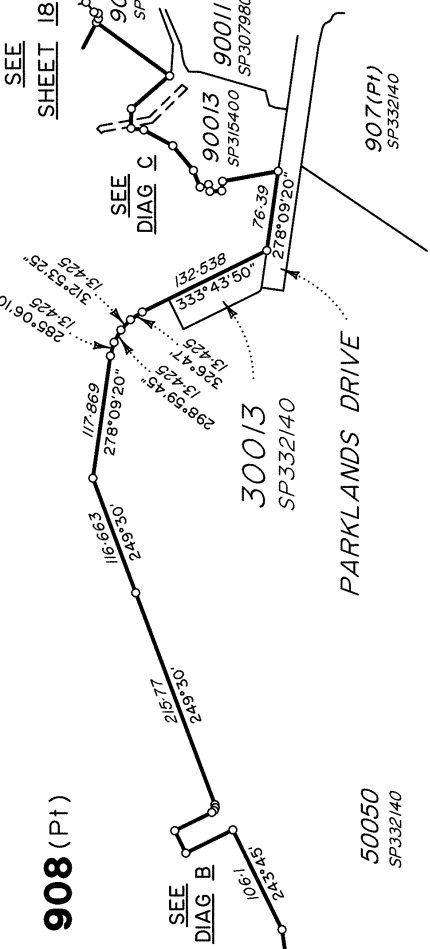
State copyright reserved.

Insert Plan Number **SP335852**

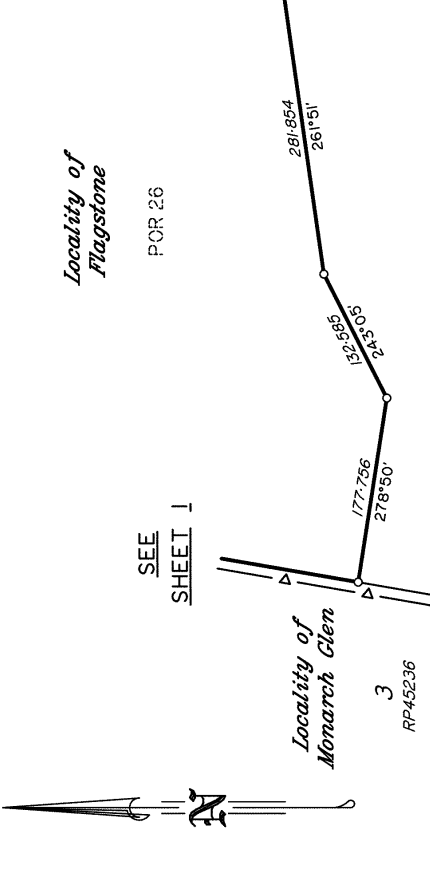
430109-1521

ADDITIONAL SHEET

SEE SHEET 18

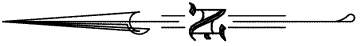


SEE SHEET 18



Locality of Flagstone  
POR 26

DIAGRAM C  
Scale 1:1250



All dimensions shown on this sheet  
are original and have been compiled  
from SP316978 in the Department  
of Resources.

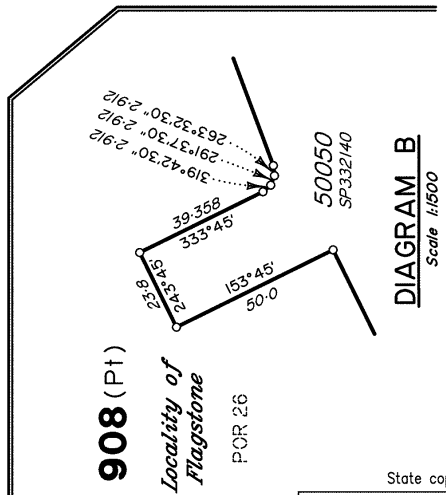


DIAGRAM B  
Scale 1:1500



State copyright reserved.

Insert Plan Number SP335852

430109-1521

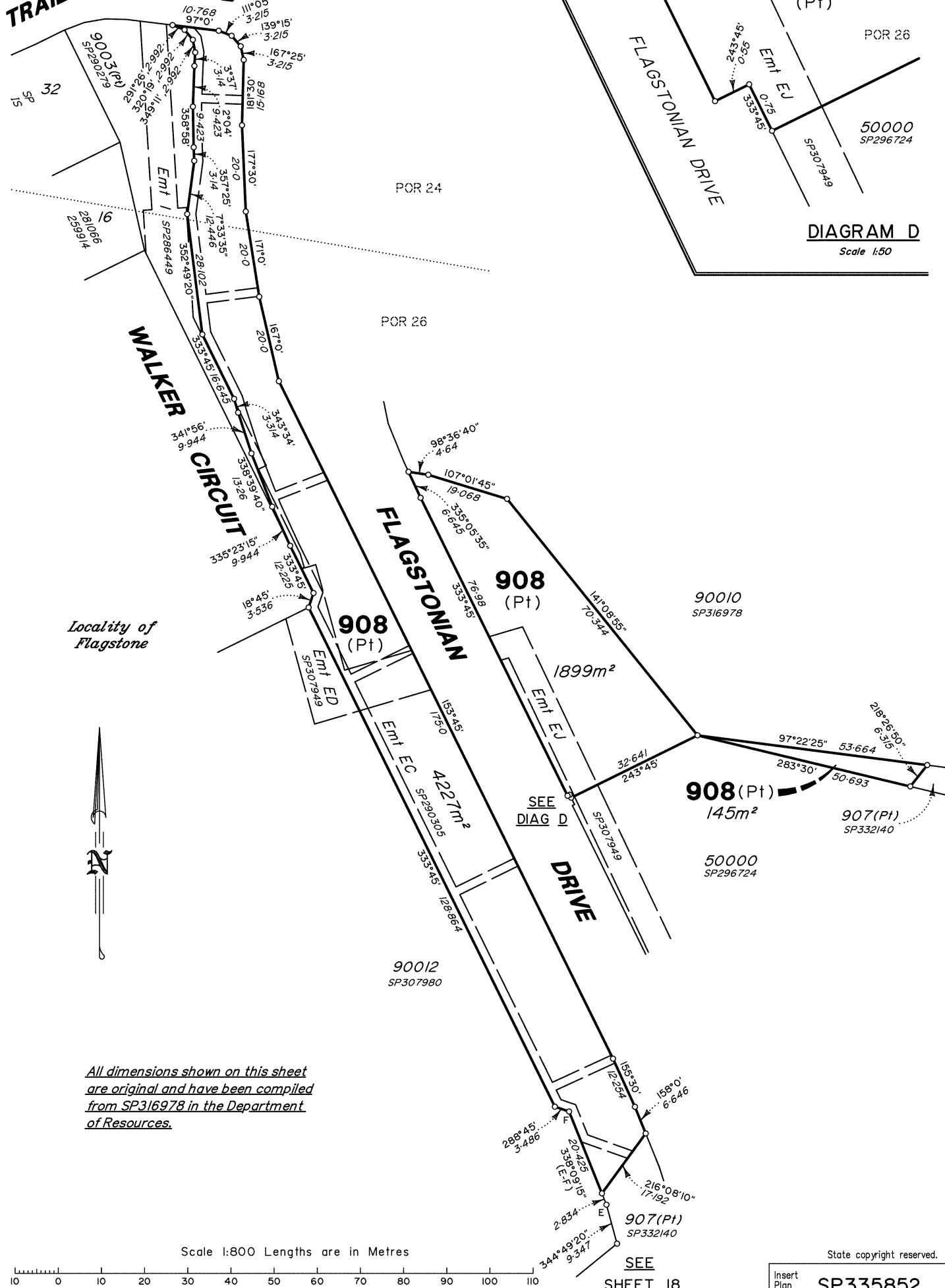
**TRAILBLAZER DRIVE**

Locality of  
**Flagstone**  
**908**  
(Pt)

**FLAGSTONIAN DRIVE**

**DIAGRAM D**

Scale 1:50

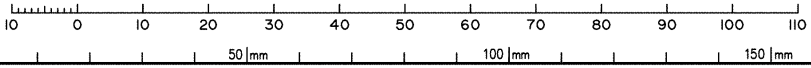


Locality of  
**Flagstone**



*All dimensions shown on this sheet  
are original and have been compiled  
from SP316978 in the Department  
of Resources.*

Scale 1:800 Lengths are in Metres



SEE  
**SHEET 18**

State copyright reserved.

Insert  
Plan  
Number **SP335852**

430109-1521