

LEGEND

Rock Retaining Wall shown as:-	
Sleeper Retaining Wall shown as:-	
Landscape Retaining Wall shown as:-	
Sewer line	
Sewer Manhole	
Roofwater Drainage line and Catch Pit	
Stormwater Drainage Line	
Stormwater Manhole	
Stormwater Pit	
Water Main	
Water Conduit	
Water Service Point of Entry	
Underground Electricity, Street Light, Electricity Pillar & NBN	
Developer Fencing	
Concrete Pathway	
Zero Setback Building Line	
Landscape Street Tree	
Indicative Building Envelope	
Bin Pads	
Proposed Services Easement	
Indicative Parking Access Location	

ADDITIONAL NOTES:

Allotments used as Multiple Residential Allotments in accordance with the approved Plan of Development may have a reduced primary road setback to 3.0metres as noted on the Plan of Development Table.

Compaction of any fill material placed on this site shall be completed to level one inspection and testing services in accordance with AS3798-2007.

Location of sewer, roofwater, stormwater, water reticulation and electricity lines, manholes and pits are those shown on engineering design drawings, supplied by Peak Urban and Meinhardt Urban Pty Ltd, and may differ from the as-constructed location.

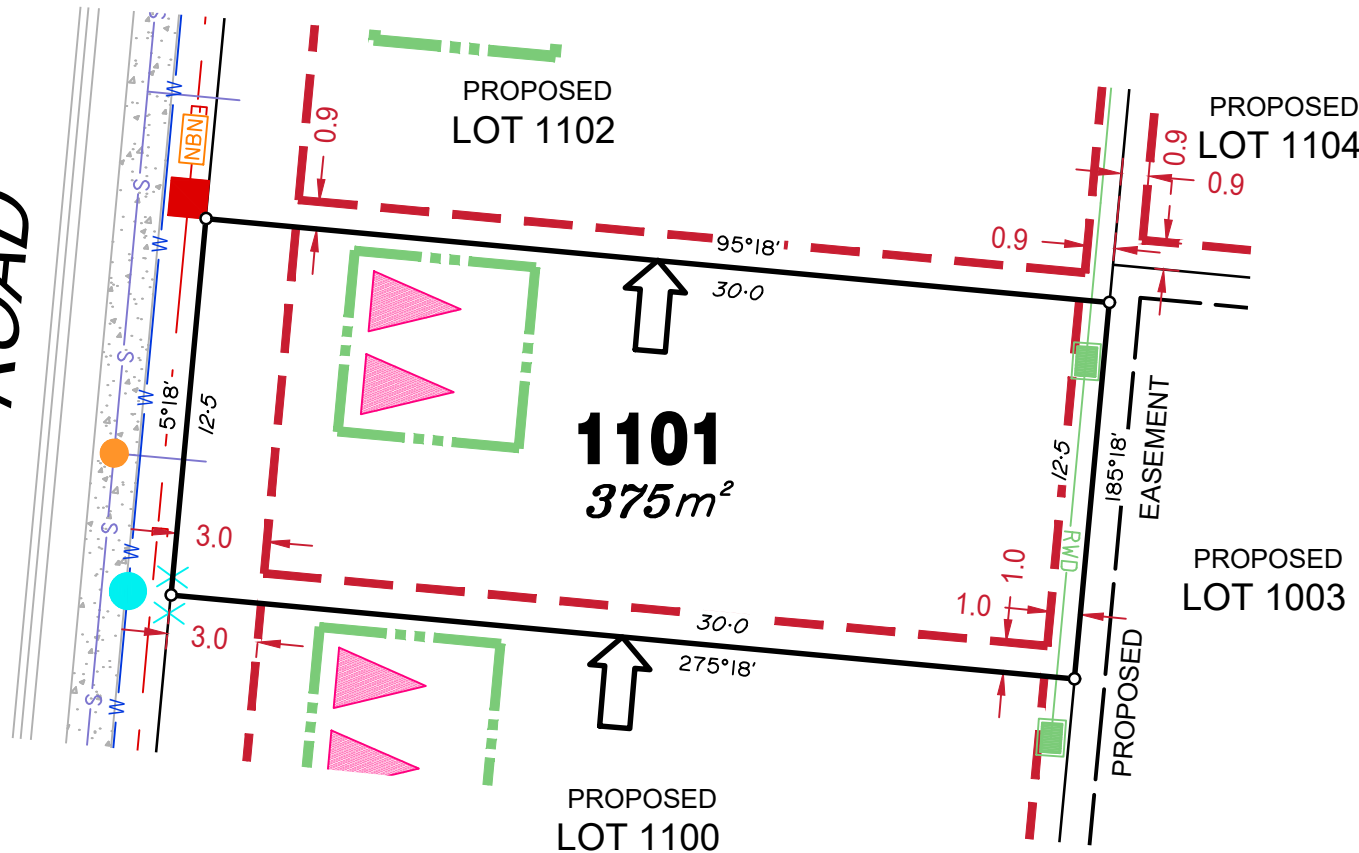
Developer fencing is in accordance with approved Acoustic Report SLR Ref No:620.10512-R09-v5.0.

Plan of Development information Supplied by RPS Group PLC.

Copyright © Veris Australia Pty Ltd
26 August 2021.

Plot Date: 30 Aug, 2021
 Computer File Ref: 430109-St3B-SP-Rev A.dwg

ROAD



LEGEND

Rock Retaining Wall shown as:-	
Sleeper Retaining Wall shown as:-	
Landscape Retaining Wall shown as:-	
Sewer line	
Sewer Manhole	
Roofwater Drainage line and Catch Pit	
Stormwater Drainage Line	
Stormwater Manhole	
Stormwater Pit	
Water Main	
Water Conduit	
Water Service Point of Entry	
Underground Electricity, Street Light, Electricity Pillar & NBN	
Developer Fencing	
Concrete Pathway	
Zero Setback Building Line	
Landscape Street Tree	
Indicative Building Envelope	
Bin Pads	
Proposed Services Easement	
Indicative Parking Access Location	

ADDITIONAL NOTES:

Allotments used as Multiple Residential Allotments in accordance with the approved Plan of Development may have a reduced primary road setback to 3.0metres as noted on the Plan of Development Table.

Compaction of any fill material placed on this site shall be completed to level one inspection and testing services in accordance with AS3798-2007.

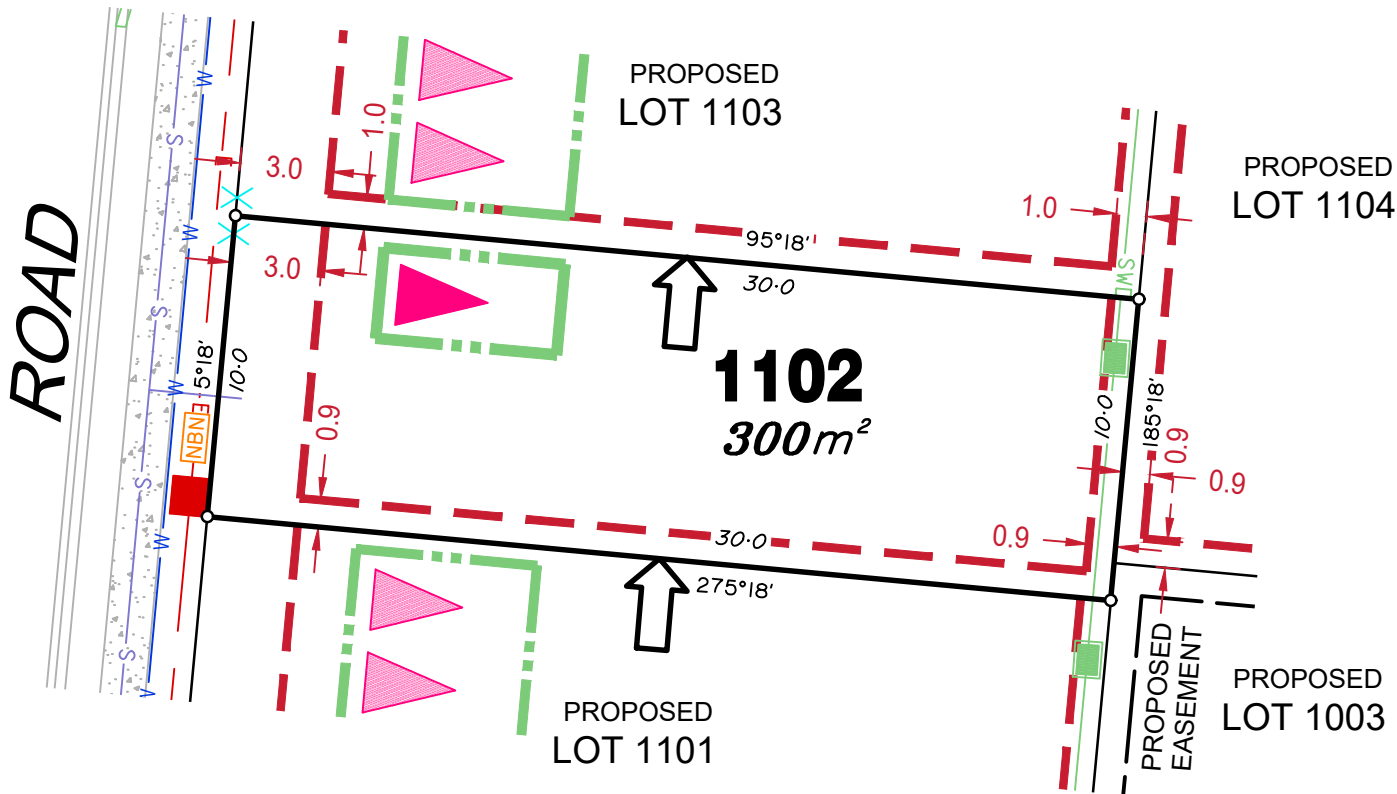
Location of sewer, roofwater, stormwater, water reticulation and electricity lines, manholes and pits are those shown on engineering design drawings, supplied by Peak Urban and Meinhardt Urban Pty Ltd, and may differ from the as-constructed location.

Developer fencing is in accordance with approved Acoustic Report SLR Ref No:620.10512-R09-v5.0.

Plan of Development information Supplied by RPS Group PLC.

Copyright © Veris Australia Pty Ltd
26 August 2021.

Plot Date: 30 Aug, 2021
Computer File Ref: 430109-St3B-SP-Rev A.dwg



LEGEND

Rock Retaining Wall shown as:-	
Sleeper Retaining Wall shown as:-	
Landscape Retaining Wall shown as:-	
Sewer line	
Sewer Manhole	
Roofwater Drainage line and Catch Pit	
Stormwater Drainage Line	
Stormwater Manhole	
Stormwater Pit	
Water Main	
Water Conduit	
Water Service Point of Entry	
Underground Electricity, Street Light, Electricity Pillar & NBN	
Developer Fencing	
Concrete Pathway	
Zero Setback Building Line	
Landscape Street Tree	
Indicative Building Envelope	
Bin Pads	
Proposed Services Easement	
Indicative Parking Access Location	

ADDITIONAL NOTES:

Allotments used as Multiple Residential Allotments in accordance with the approved Plan of Development may have a reduced primary road setback to 3.0metres as noted on the Plan of Development Table.

Compaction of any fill material placed on this site shall be completed to level one inspection and testing services in accordance with AS3798-2007.

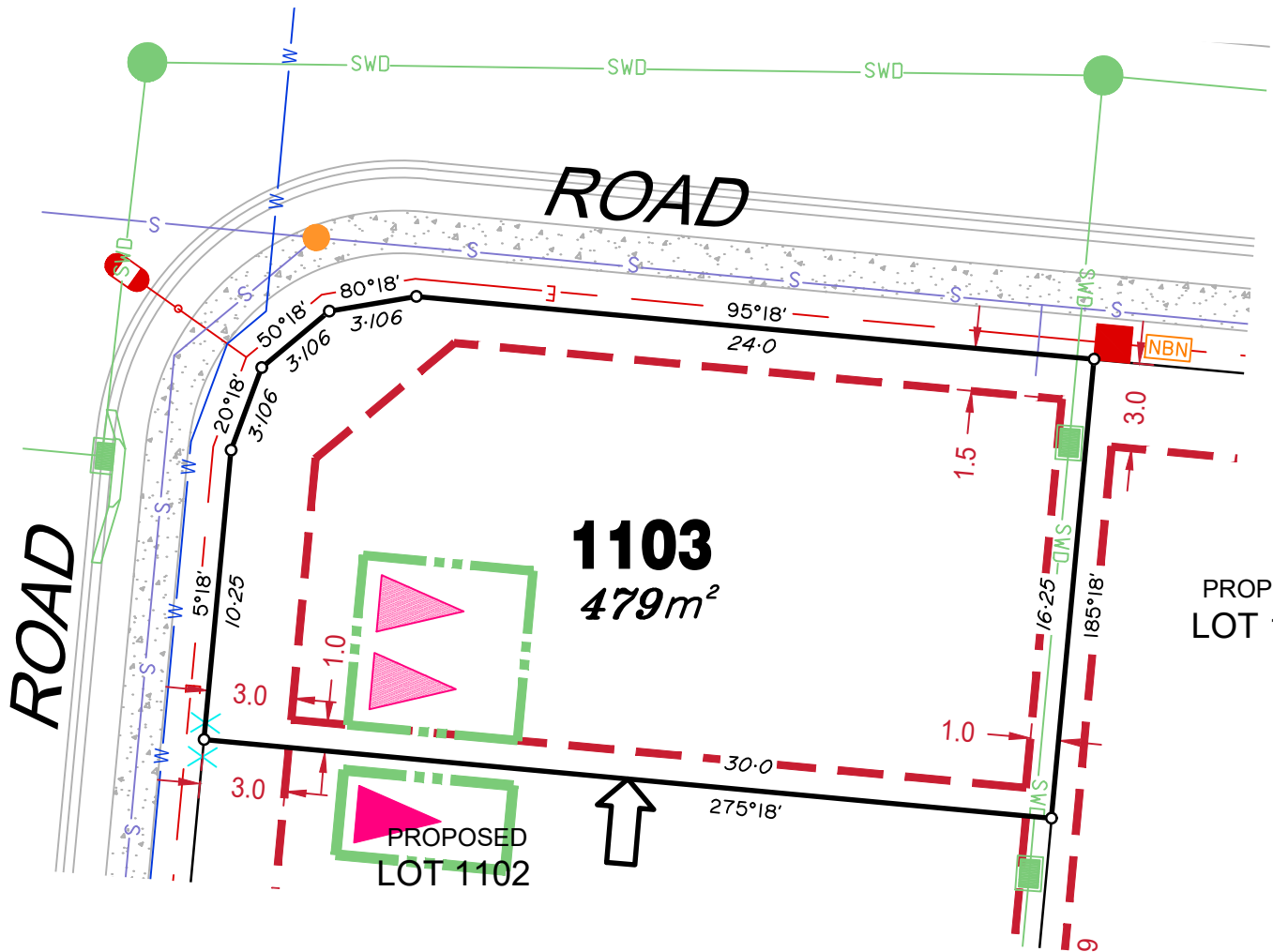
Location of sewer, roofwater, stormwater, water reticulation and electricity lines, manholes and pits are those shown on engineering design drawings, supplied by Peak Urban and Meinhardt Urban Pty Ltd, and may differ from the as-constructed location.

Developer fencing is in accordance with approved Acoustic Report SLR Ref No:620.10512-R09-v5.0.

Plan of Development information Supplied by RPS Group PLC.

Copyright © Veris Australia Pty Ltd
26 August 2021.

Plot Date: 30 Aug, 2021
 Computer File Ref: 430109-St3B-SP-Rev A.dwg



LEGEND

Rock Retaining Wall shown as:-	
Sleeper Retaining Wall shown as:-	
Landscape Retaining Wall shown as:-	
Sewer line	
Sewer Manhole	
Roofwater Drainage line and Catch Pit	
Stormwater Drainage Line	
Stormwater Manhole	
Stormwater Pit	
Water Main	
Water Conduit	
Water Service Point of Entry	
Underground Electricity, Street Light, Electricity Pillar & NBN	
Developer Fencing	
Concrete Pathway	
Zero Setback Building Line	
Landscape Street Tree	
Indicative Building Envelope	
Bin Pads	
Proposed Services Easement	
Indicative Parking Access Location	

ADDITIONAL NOTES:

Allotments used as Multiple Residential Allotments in accordance with the approved Plan of Development may have a reduced primary road setback to 3.0metres as noted on the Plan of Development Table.

Compaction of any fill material placed on this site shall be completed to level one inspection and testing services in accordance with AS3798-2007.

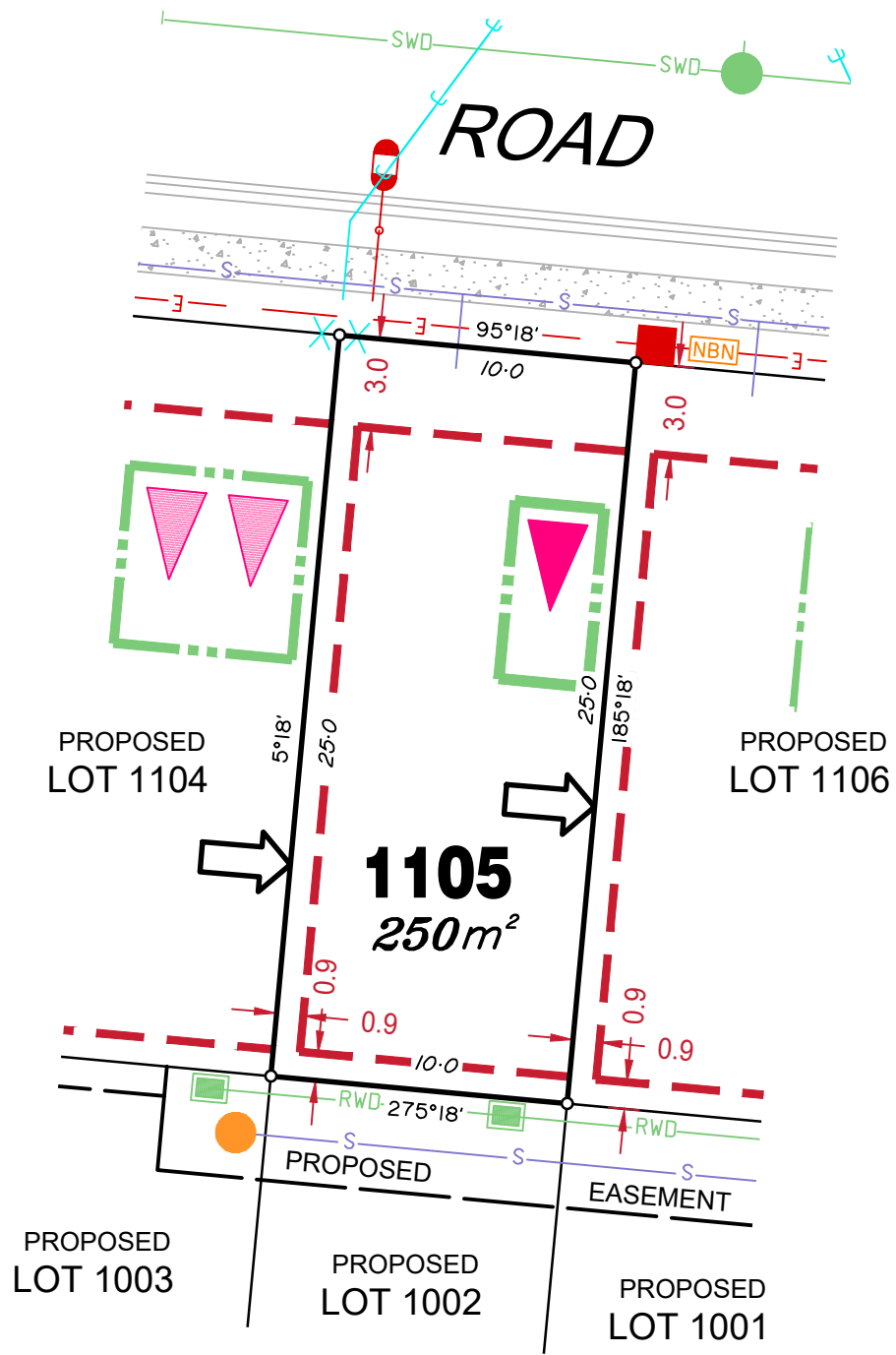
Location of sewer, roofwater, stormwater, water reticulation and electricity lines, manholes and pits are those shown on engineering design drawings, supplied by Peak Urban and Meinhardt Urban Pty Ltd, and may differ from the as-constructed location.

Developer fencing is in accordance with approved Acoustic Report SLR Ref No:620.10512-R09-v5.0.

Plan of Development information Supplied by RPS Group PLC.

Copyright © Veris Australia Pty Ltd
26 August 2021.

Plot Date: 30 Aug, 2021
 Computer File Ref: 430109-St3B-SP-Rev A.dwg



LEGEND

Rock Retaining Wall shown as:-	
Sleeper Retaining Wall shown as:-	
Landscape Retaining Wall shown as:-	
Sewer line	
Sewer Manhole	
Roofwater Drainage line and Catch Pit	
Stormwater Drainage Line	
Stormwater Manhole	
Stormwater Pit	
Water Main	
Water Conduit	
Water Service Point of Entry	
Underground Electricity, Street Light, Electricity Pillar & NBN	
Developer Fencing	
Concrete Pathway	
Zero Setback Building Line	
Landscape Street Tree	
Indicative Building Envelope	
Bin Pads	
Proposed Services Easement	
Indicative Parking Access Location	

ADDITIONAL NOTES:

Allotments used as Multiple Residential Allotments in accordance with the approved Plan of Development may have a reduced primary road setback to 3.0metres as noted on the Plan of Development Table.

Compaction of any fill material placed on this site shall be completed to level one inspection and testing services in accordance with AS3798-2007.

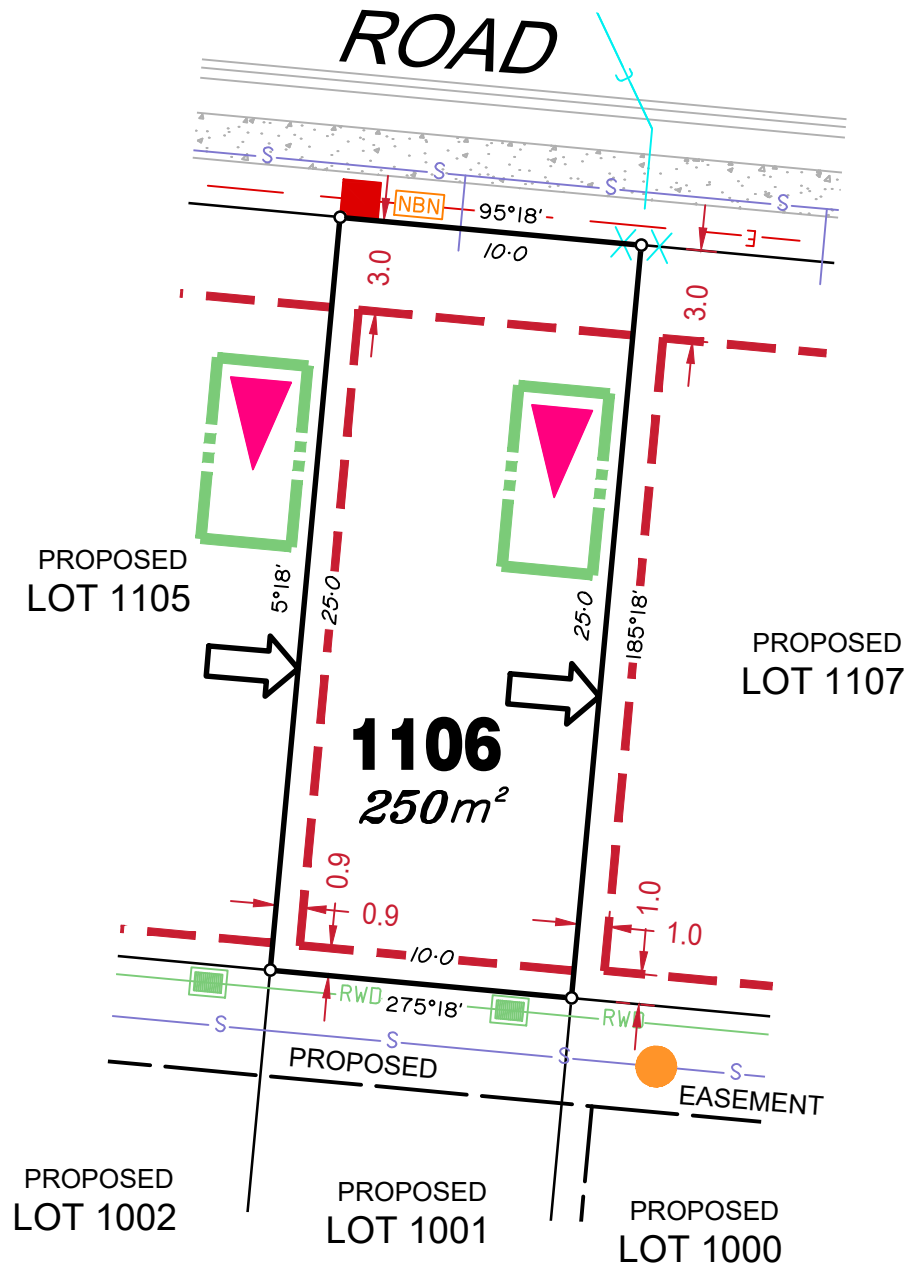
Location of sewer, roofwater, stormwater, water reticulation and electricity lines, manholes and pits are those shown on engineering design drawings, supplied by Peak Urban and Meinhardt Urban Pty Ltd, and may differ from the as-constructed location.

Developer fencing is in accordance with approved Acoustic Report SLR Ref No:620.10512-R09-v5.0.

Plan of Development information Supplied by RPS Group PLC.

Copyright © Veris Australia Pty Ltd
26 August 2021.

Plot Date: 30 Aug, 2021
 Computer File Ref: 430109-St3B-SP-Rev A.dwg



LEGEND

Rock Retaining Wall shown as:-	
Sleeper Retaining Wall shown as:-	
Landscape Retaining Wall shown as:-	
Sewer line	
Sewer Manhole	
Roofwater Drainage line and Catch Pit	
Stormwater Drainage Line	
Stormwater Manhole	
Stormwater Pit	
Water Main	
Water Conduit	
Water Service Point of Entry	
Underground Electricity, Street Light, Electricity Pillar & NBN	
Developer Fencing	
Concrete Pathway	
Landscape Street Tree	
Zero Setback Building Line	
Indicative Building Envelope	
Bin Pads	
Proposed Services Easement	
Indicative Parking Access Location	

ADDITIONAL NOTES:

Allotments used as Multiple Residential Allotments in accordance with the approved Plan of Development may have a reduced primary road setback to 3.0metres as noted on the Plan of Development Table.

Compaction of any fill material placed on this site shall be completed to level one inspection and testing services in accordance with AS3798-2007.

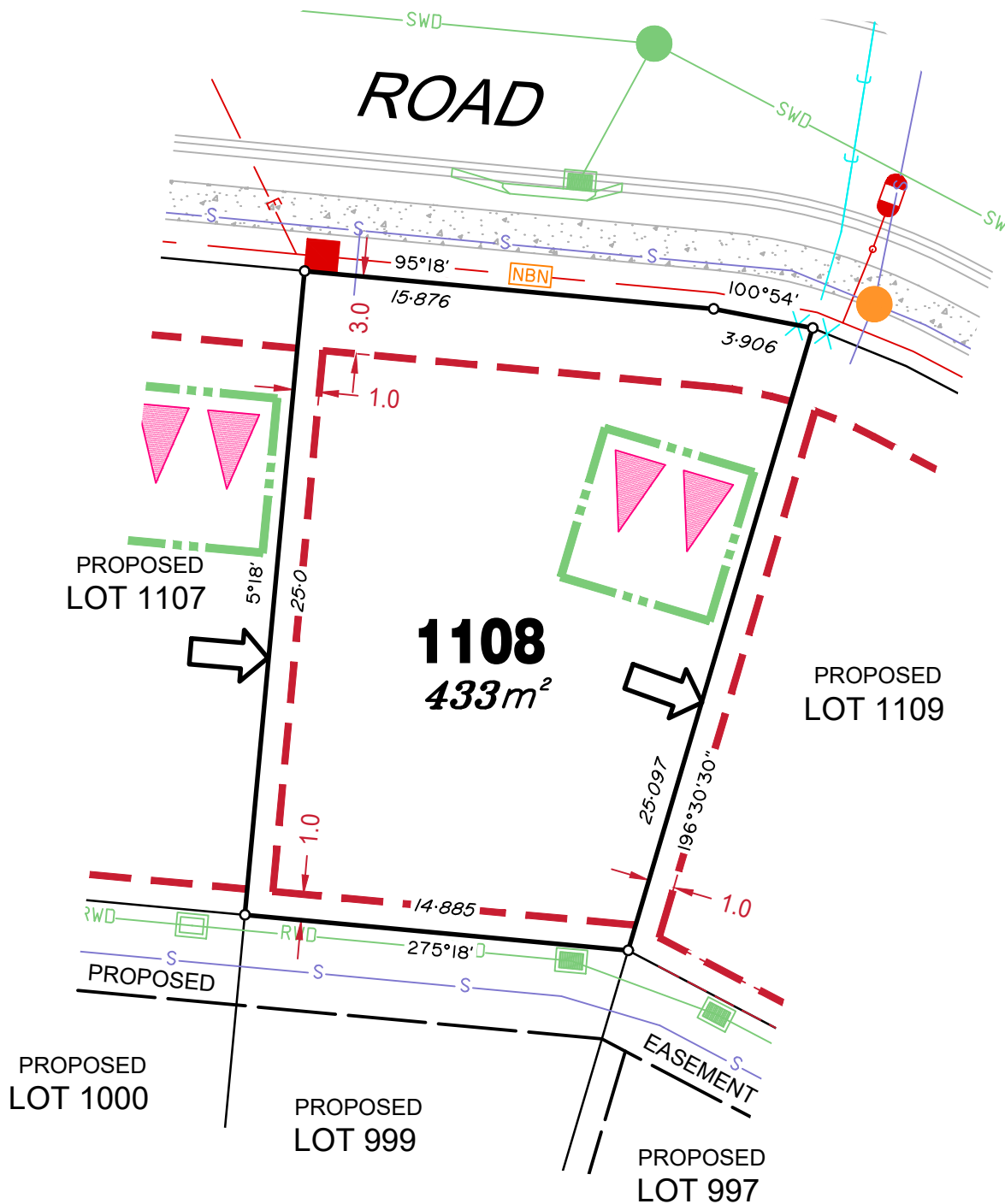
Location of sewer, roofwater, stormwater, water reticulation and electricity lines, manholes and pits are those shown on engineering design drawings, supplied by Peak Urban and Meinhardt Urban Pty Ltd, and may differ from the as-constructed location.

Developer fencing is in accordance with approved Acoustic Report SLR Ref No:620.10512-R09-v5.0.

Plan of Development information Supplied by RPS Group PLC.

Copyright © Veris Australia Pty Ltd
26 August 2021.

Plot Date: 30 Aug, 2021
 Computer File Ref: 430109-S13B-SP-Rev A.dwg



LEGEND

Rock Retaining Wall shown as:-	
Sleeper Retaining Wall shown as:-	
Landscape Retaining Wall shown as:-	
Sewer line	
Sewer Manhole	
Roofwater Drainage line and Catch Pit	
Stormwater Drainage Line	
Stormwater Manhole	
Stormwater Pit	
Water Main	
Water Conduit	
Water Service Point of Entry	
Underground Electricity, Street Light, Electricity Pillar & NBN	
Developer Fencing	
Concrete Pathway	
Zero Setback Building Line	
Landscape Street Tree	
Indicative Building Envelope	
Bin Pads	
Proposed Services Easement	
Indicative Parking Access Location	

ADDITIONAL NOTES:

Allotments used as Multiple Residential Allotments in accordance with the approved Plan of Development may have a reduced primary road setback to 3.0metres as noted on the Plan of Development Table.

Compaction of any fill material placed on this site shall be completed to level one inspection and testing services in accordance with AS3798-2007.

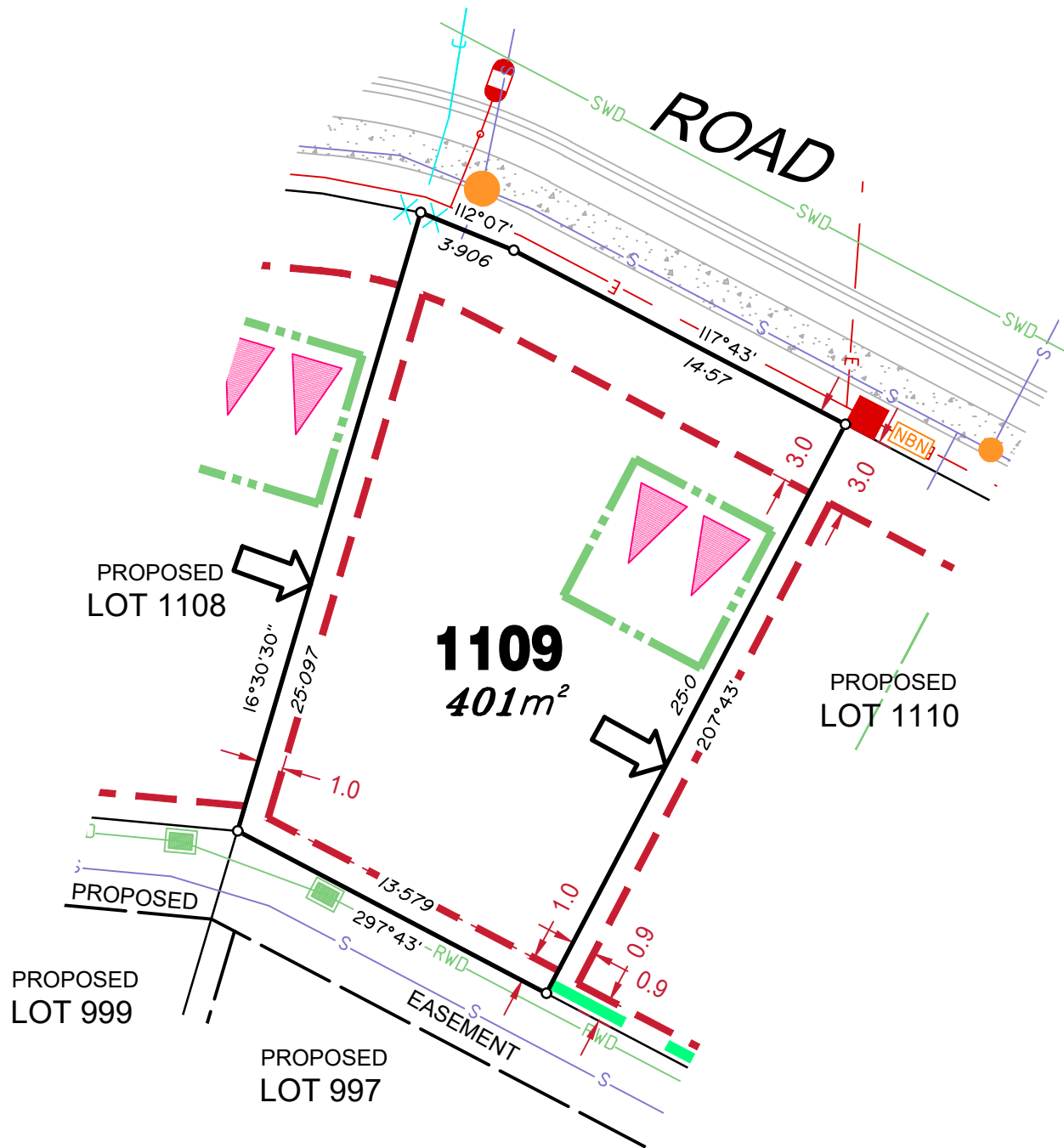
Location of sewer, roofwater, stormwater, water reticulation and electricity lines, manholes and pits are those shown on engineering design drawings, supplied by Peak Urban and Meinhardt Urban Pty Ltd, and may differ from the as-constructed location.

Developer fencing is in accordance with approved Acoustic Report SLR Ref No:620.10512-R09-v5.0.

Plan of Development information Supplied by RPS Group PLC.

Copyright © Veris Australia Pty Ltd
26 August 2021.

Plot Date: 30 Aug, 2021
 Computer File Ref: 430109-S13B-SP-Rev A.dwg



LEGEND

Rock Retaining Wall shown as:-	
Sleeper Retaining Wall shown as:-	
Landscape Retaining Wall shown as:-	
Sewer line	
Sewer Manhole	
Roofwater Drainage line and Catch Pit	
Stormwater Drainage Line	
Stormwater Manhole	
Stormwater Pit	
Water Main	
Water Conduit	
Water Service Point of Entry	
Underground Electricity, Street Light, Electricity Pillar & NBN	
Developer Fencing	
Concrete Pathway	
Zero Setback Building Line	
Landscape Street Tree	
Indicative Building Envelope	
Bin Pads	
Proposed Services Easement	
Indicative Parking Access Location	

ADDITIONAL NOTES:

Allotments used as Multiple Residential Allotments in accordance with the approved Plan of Development may have a reduced primary road setback to 3.0metres as noted on the Plan of Development Table.

Compaction of any fill material placed on this site shall be completed to level one inspection and testing services in accordance with AS3798-2007.

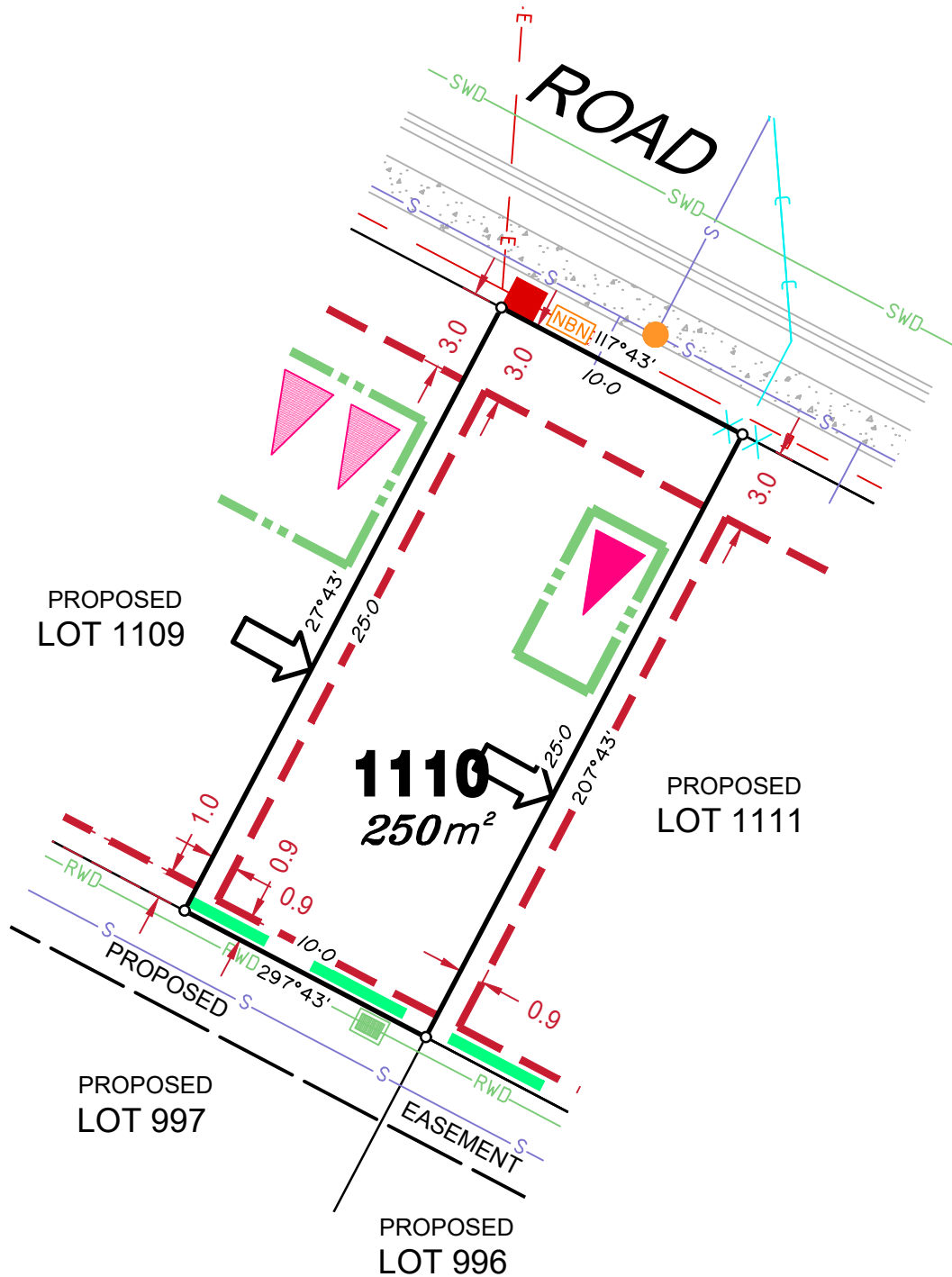
Location of sewer, roofwater, stormwater, water reticulation and electricity lines, manholes and pits are those shown on engineering design drawings, supplied by Peak Urban and Meinhardt Urban Pty Ltd, and may differ from the as-constructed location.

Developer fencing is in accordance with approved Acoustic Report SLR Ref No:620.10512-R09-v5.0.

Plan of Development information Supplied by RPS Group PLC.

Copyright © Veris Australia Pty Ltd
26 August 2021.

Plot Date: 30 Aug, 2021
 Computer File Ref: 430109-St3B-SP-Rev A.dwg



LEGEND

Rock Retaining Wall shown as:-	
Sleeper Retaining Wall shown as:-	
Landscape Retaining Wall shown as:-	
Sewer line	
Sewer Manhole	
Roofwater Drainage line and Catch Pit	
Stormwater Drainage Line	
Stormwater Manhole	
Stormwater Pit	
Water Main	
Water Conduit	
Water Service Point of Entry	
Underground Electricity, Street Light, Electricity Pillar & NBN	
Developer Fencing	
Concrete Pathway	
Zero Setback Building Line	
Landscape Street Tree	
Indicative Building Envelope	
Bin Pads	
Proposed Services Easement	
Indicative Parking Access Location	

ADDITIONAL NOTES:

Allotments used as Multiple Residential Allotments in accordance with the approved Plan of Development may have a reduced primary road setback to 3.0metres as noted on the Plan of Development Table.

Compaction of any fill material placed on this site shall be completed to level one inspection and testing services in accordance with AS3798-2007.

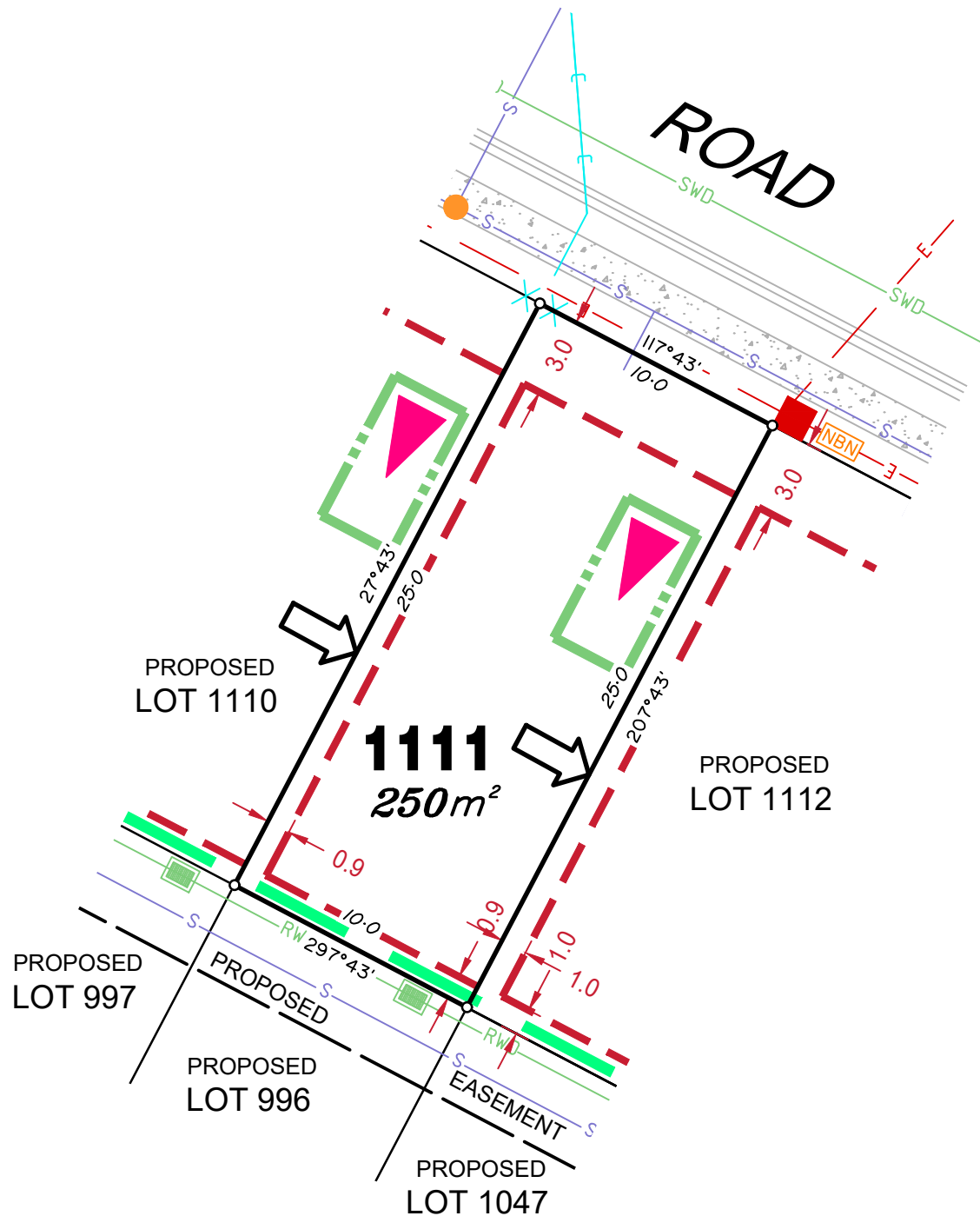
Location of sewer, roofwater, stormwater, water reticulation and electricity lines, manholes and pits are those shown on engineering design drawings, supplied by Peak Urban and Meinhardt Urban Pty Ltd, and may differ from the as-constructed location.

Developer fencing is in accordance with approved Acoustic Report SLR Ref No:620.10512-R09-v5.0.

Plan of Development information Supplied by RPS Group PLC.

Copyright © Veris Australia Pty Ltd
26 August 2021.

Plot Date: 30 Aug, 2021
 Computer File Ref: 430109-St3B-SP-Rev A.dwg



LEGEND

Rock Retaining Wall shown as:-	
Sleeper Retaining Wall shown as:-	
Landscape Retaining Wall shown as:-	
Sewer line	
Sewer Manhole	
Roofwater Drainage line and Catch Pit	
Stormwater Drainage Line	
Stormwater Manhole	
Stormwater Pit	
Water Main	
Water Conduit	
Water Service Point of Entry	
Underground Electricity, Street Light, Electricity Pillar & NBN	
Developer Fencing	
Concrete Pathway	
Zero Setback Building Line	
Indicative Building Envelope	
Bin Pads	
Proposed Services Easement	
Indicative Parking Access Location	
Landscape Street Tree	

ADDITIONAL NOTES:

Allotments used as Multiple Residential Allotments in accordance with the approved Plan of Development may have a reduced primary road setback to 3.0metres as noted on the Plan of Development Table.

Compaction of any fill material placed on this site shall be completed to level one inspection and testing services in accordance with AS3798-2007.

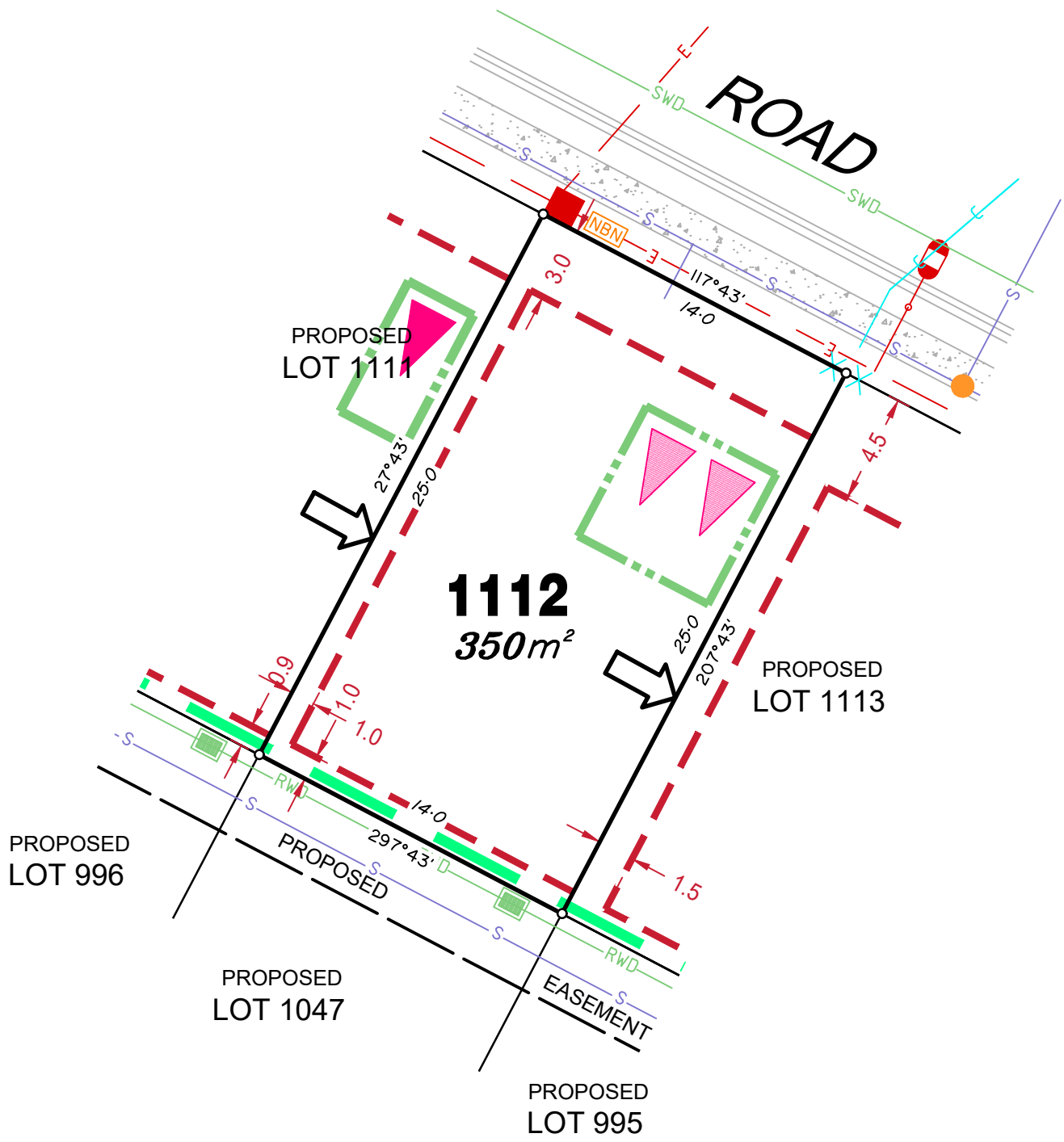
Location of sewer, roofwater, stormwater, water reticulation and electricity lines, manholes and pits are those shown on engineering design drawings, supplied by Peak Urban and Meinhardt Urban Pty Ltd, and may differ from the as-constructed location.

Developer fencing is in accordance with approved Acoustic Report SLR Ref No:620.10512-R09-v5.0.

Plan of Development information Supplied by RPS Group PLC.

Copyright © Veris Australia Pty Ltd
26 August 2021.

Plot Date: 30 Aug, 2021
 Computer File Ref: 430109-St3B-SP-Rev A.dwg



LEGEND

- Rock Retaining Wall shown as:-
- Sleeper Retaining Wall shown as:-
- Landscape Retaining Wall shown as:-
- Sewer line
- Sewer Manhole
- Roofwater Drainage line and Catch Pit
- Stormwater Drainage Line
- Stormwater Manhole
- Stormwater Pit
- Water Main
- Water Conduit
- Water Service Point of Entry
- Underground Electricity, Street Light, Electricity Pillar & NBN
- Developer Fencing
- Concrete Pathway
- Zero Setback Building Line
- Indicative Building Envelope
- Bin Pads
- Proposed Services Easement
- Indicative Parking Access Location
- Landscape Street Tree

ADDITIONAL NOTES:

Allotments used as Multiple Residential Allotments in accordance with the approved Plan of Development may have a reduced primary road setback to 3.0metres as noted on the Plan of Development Table.

Compaction of any fill material placed on this site shall be completed to level one inspection and testing services in accordance with AS3798-2007.

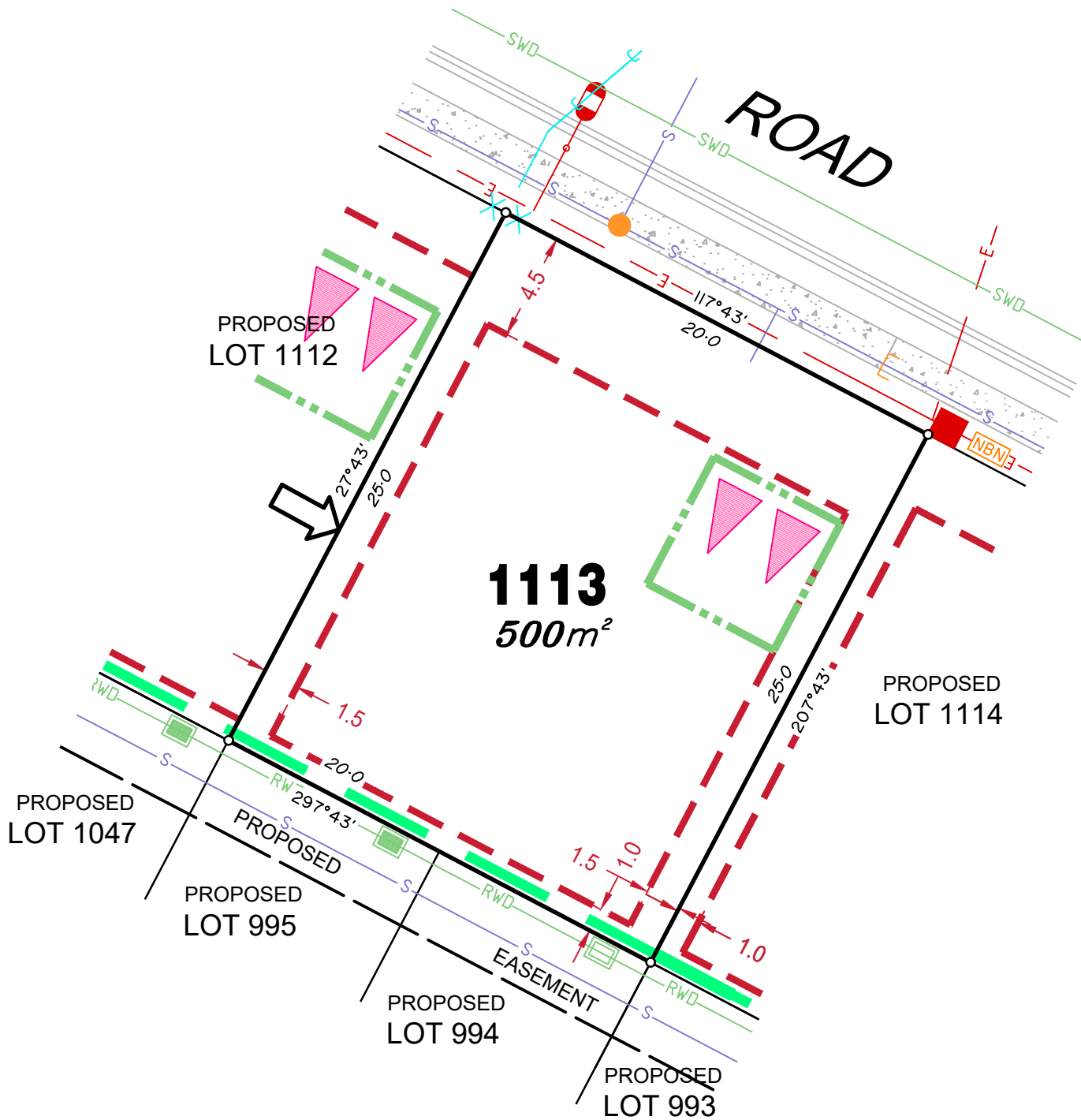
Location of sewer, roofwater, stormwater, water reticulation and electricity lines, manholes and pits are those shown on engineering design drawings, supplied by Peak Urban and Meinhardt Urban Pty Ltd, and may differ from the as-constructed location.

Developer fencing is in accordance with approved Acoustic Report SLR Ref No:620.10512-R09-v5.0.

Plan of Development information Supplied by RPS Group PLC.

Copyright © Veris Australia Pty Ltd
26 August 2021.

Plot Date: 30 Aug, 2021
 Computer File Ref: 430109-St3B-SP-Rev A.dwg



LEGEND

Rock Retaining Wall shown as:-	
Sleeper Retaining Wall shown as:-	
Landscape Retaining Wall shown as:-	
Sewer line	
Sewer Manhole	
Roofwater Drainage line and Catch Pit	
Stormwater Drainage Line	
Stormwater Manhole	
Stormwater Pit	
Water Main	
Water Conduit	
Water Service Point of Entry	
Underground Electricity, Street Light, Electricity Pillar & NBN	
Developer Fencing	
Concrete Pathway	
Zero Setback Building Line	
Landscape Street Tree	
Indicative Building Envelope	
Bin Pads	
Proposed Services Easement	
Indicative Parking Access Location	

ADDITIONAL NOTES:

Allotments used as Multiple Residential Allotments in accordance with the approved Plan of Development may have a reduced primary road setback to 3.0metres as noted on the Plan of Development Table.

Compaction of any fill material placed on this site shall be completed to level one inspection and testing services in accordance with AS3798-2007.

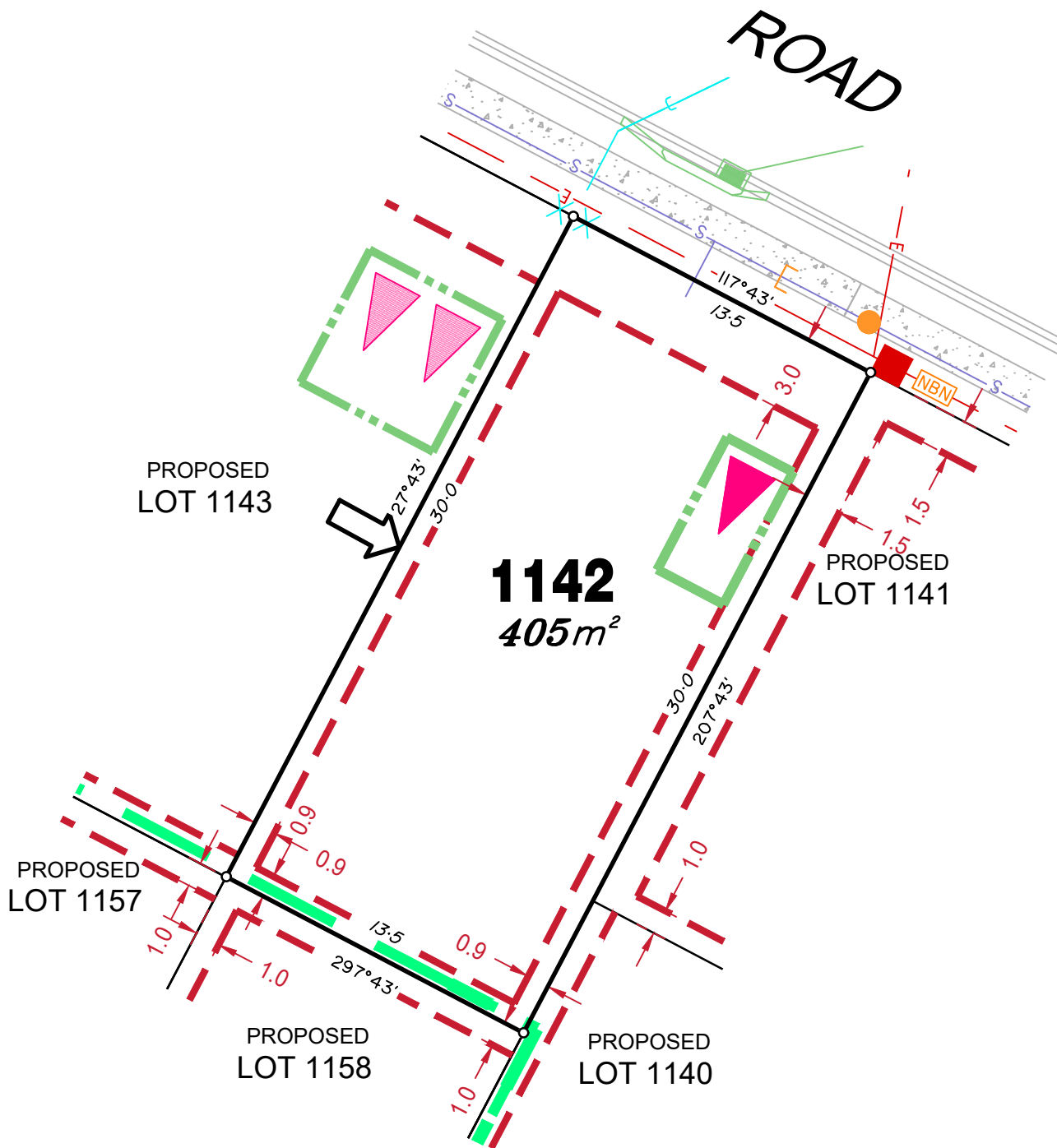
Location of sewer, roofwater, stormwater, water reticulation and electricity lines, manholes and pits are those shown on engineering design drawings, supplied by Peak Urban and Meinhardt Urban Pty Ltd, and may differ from the as-constructed location.

Developer fencing is in accordance with approved Acoustic Report SLR Ref No:620.10512-R09-v5.0.

Plan of Development information Supplied by RPS Group PLC.

Copyright © Veris Australia Pty Ltd
26 August 2021.

Plot Date: 30 Aug, 2021
Computer File Ref: 430109-St3B-SP-Rev A.dwg



LEGEND

Rock Retaining Wall shown as:-	
Sleeper Retaining Wall shown as:-	
Landscape Retaining Wall shown as:-	
Sewer line	
Sewer Manhole	
Roofwater Drainage line and Catch Pit	
Stormwater Drainage Line	
Stormwater Manhole	
Stormwater Pit	
Water Main	
Water Conduit	
Water Service Point of Entry	
Underground Electricity, Street Light, Electricity Pillar & NBN	
Developer Fencing	
Concrete Pathway	
Zero Setback Building Line	
Landscape Street Tree	
Indicative Building Envelope	
Bin Pads	
Proposed Services Easement	
Indicative Parking Access Location	

ADDITIONAL NOTES:

Allotments used as Multiple Residential Allotments in accordance with the approved Plan of Development may have a reduced primary road setback to 3.0metres as noted on the Plan of Development Table.

Compaction of any fill material placed on this site shall be completed to level one inspection and testing services in accordance with AS3798-2007.

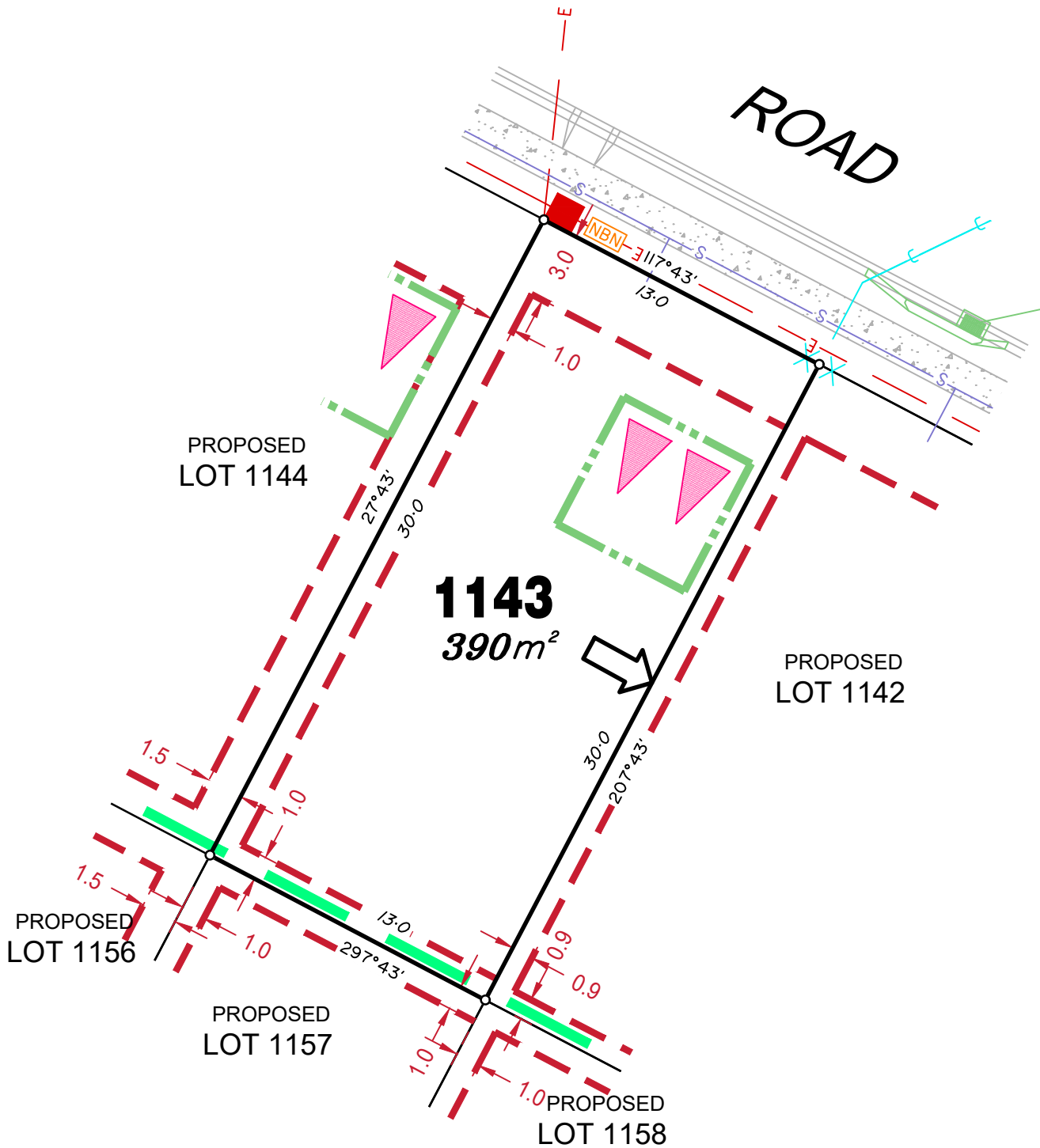
Location of sewer, roofwater, stormwater, water reticulation and electricity lines, manholes and pits are those shown on engineering design drawings, supplied by Peak Urban and Meinhardt Urban Pty Ltd, and may differ from the as-constructed location.

Developer fencing is in accordance with approved Acoustic Report SLR Ref No:620.10512-R09-v5.0.

Plan of Development information Supplied by RPS Group PLC.

Copyright © Veris Australia Pty Ltd
26 August 2021.

Plot Date: 30 Aug, 2021
 Computer File Ref: 430109-St3B-SP-Rev A.dwg



LEGEND

Rock Retaining Wall shown as:-	
Sleeper Retaining Wall shown as:-	
Landscape Retaining Wall shown as:-	
Sewer line	
Sewer Manhole	
Roofwater Drainage line and Catch Pit	
Stormwater Drainage Line	
Stormwater Manhole	
Stormwater Pit	
Water Main	
Water Conduit	
Water Service Point of Entry	
Underground Electricity, Street Light, Electricity Pillar & NBN	
Developer Fencing	
Concrete Pathway	
Zero Setback Building Line	
Landscape Street Tree	
Indicative Building Envelope	
Bin Pads	
Proposed Services Easement	
Indicative Parking Access Location	

ADDITIONAL NOTES:

Allotments used as Multiple Residential Allotments in accordance with the approved Plan of Development may have a reduced primary road setback to 3.0metres as noted on the Plan of Development Table.

Compaction of any fill material placed on this site shall be completed to level one inspection and testing services in accordance with AS3798-2007.

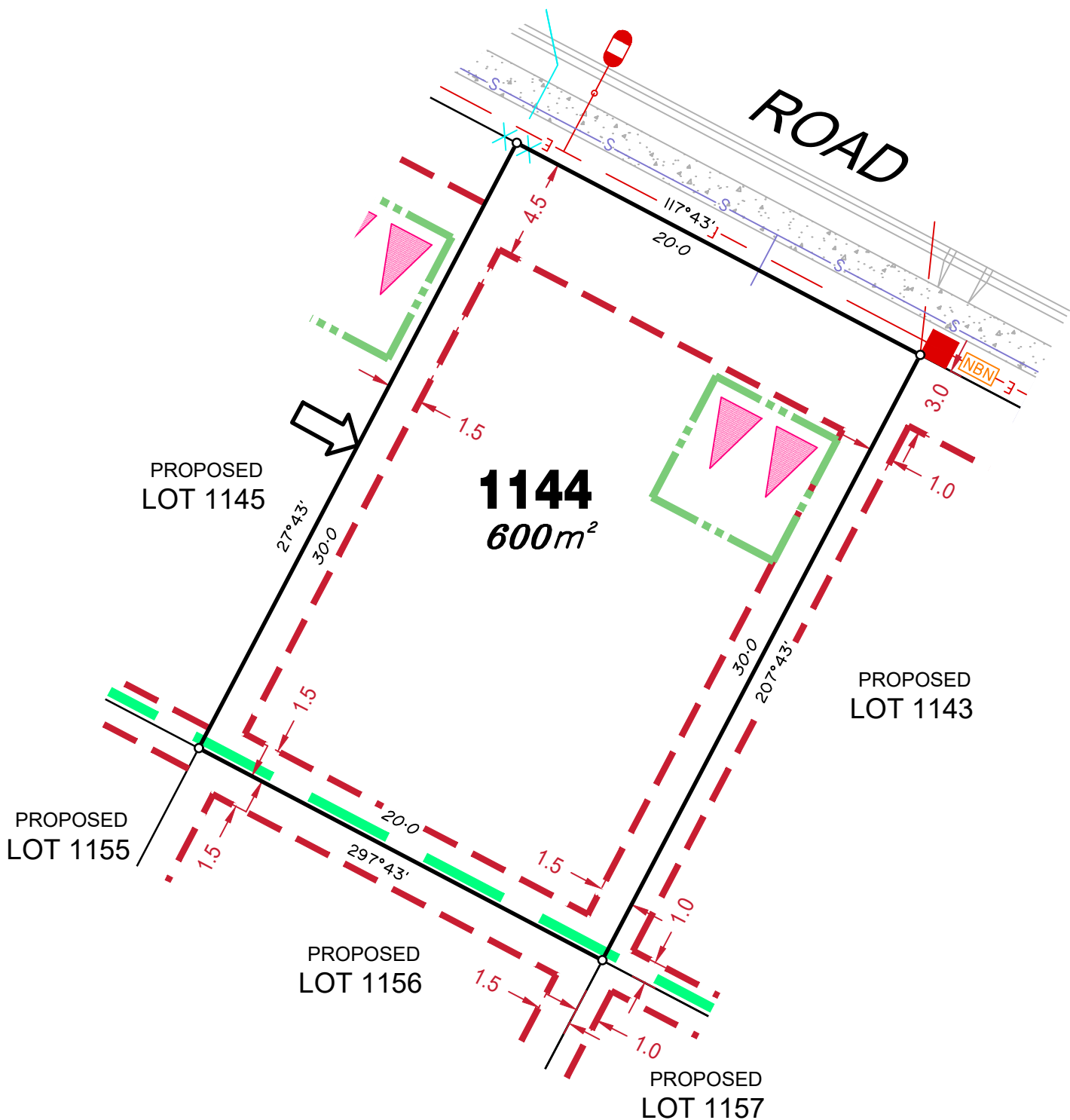
Location of sewer, roofwater, stormwater, water reticulation and electricity lines, manholes and pits are those shown on engineering design drawings, supplied by Peak Urban and Meinhardt Urban Pty Ltd, and may differ from the as-constructed location.

Developer fencing is in accordance with approved Acoustic Report SLR Ref No:620.10512-R09-v5.0.

Plan of Development information Supplied by RPS Group PLC.

Copyright © Veris Australia Pty Ltd
26 August 2021.

Plot Date: 30 Aug, 2021
 Computer File Ref: 430109-St3B-SP-Rev A.dwg



LEGEND

- Rock Retaining Wall shown as:-
- Sleeper Retaining Wall shown as:-
- Landscape Retaining Wall shown as:-
- Sewer line
- Sewer Manhole
- Roofwater Drainage line and Catch Pit
- Stormwater Drainage Line
- Stormwater Manhole
- Stormwater Pit
- Water Main
- Water Conduit
- Water Service Point of Entry
- Underground Electricity, Street Light, Electricity Pillar & NBN
- Developer Fencing
- Concrete Pathway
- Zero Setback Building Line
- Indicative Building Envelope
- Bin Pads
- Proposed Services Easement
- Indicative Parking Access Location
- Landscape Street Tree

ADDITIONAL NOTES:

Allotments used as Multiple Residential Allotments in accordance with the approved Plan of Development may have a reduced primary road setback to 3.0metres as noted on the Plan of Development Table.

Compaction of any fill material placed on this site shall be completed to level one inspection and testing services in accordance with AS3798-2007.

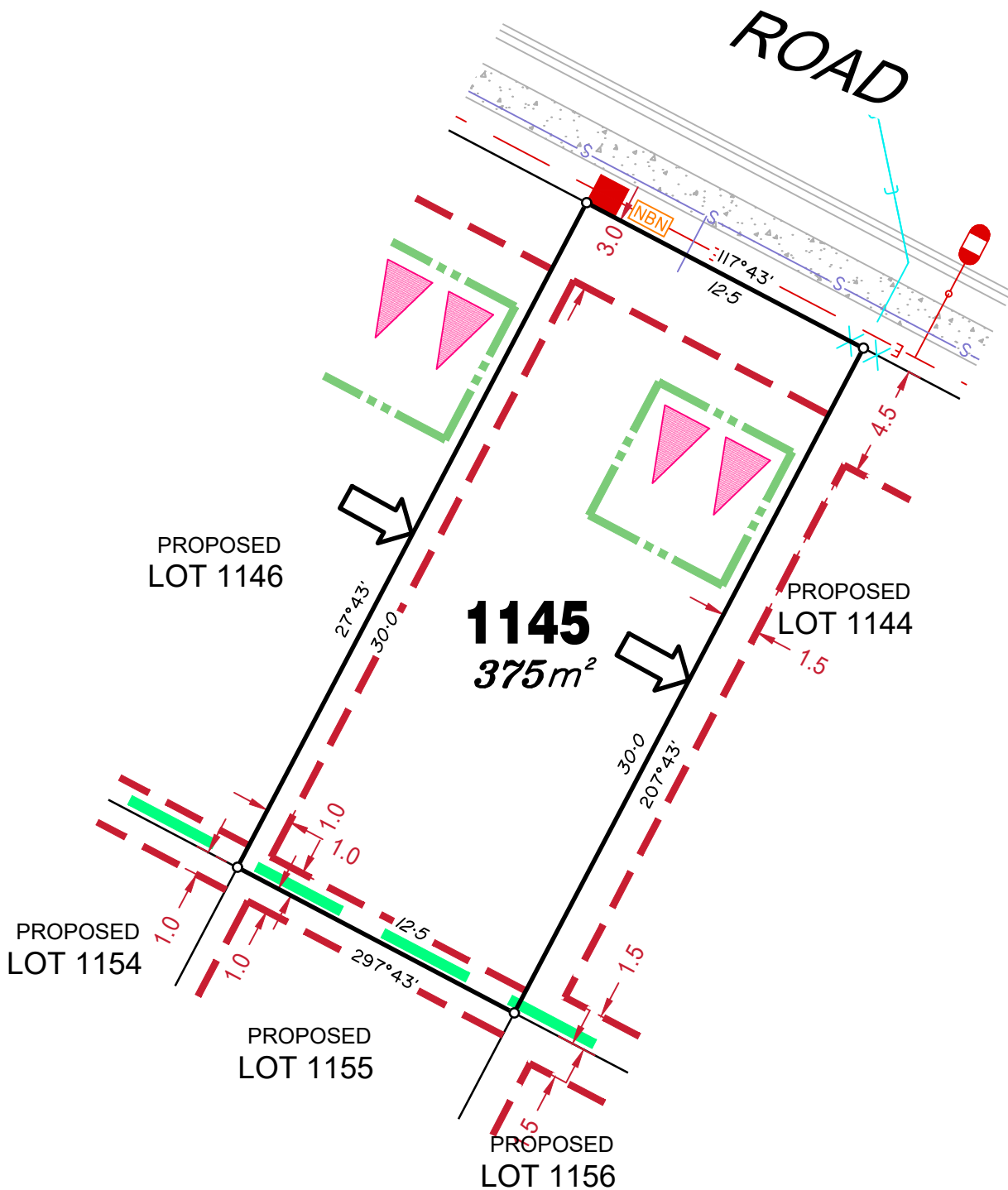
Location of sewer, roofwater, stormwater, water reticulation and electricity lines, manholes and pits are those shown on engineering design drawings, supplied by Peak Urban and Meinhardt Urban Pty Ltd, and may differ from the as-constructed location.

Developer fencing is in accordance with approved Acoustic Report SLR Ref No:620.10512-R09-v5.0.

Plan of Development information Supplied by RPS Group PLC.

Copyright © Veris Australia Pty Ltd
26 August 2021.

Plot Date: 30 Aug, 2021
 Computer File Ref: 430109-St3B-SP-Rev A.dwg



LEGEND

Rock Retaining Wall shown as:-	
Sleeper Retaining Wall shown as:-	
Landscape Retaining Wall shown as:-	
Sewer line	
Sewer Manhole	
Roofwater Drainage line and Catch Pit	
Stormwater Drainage Line	
Stormwater Manhole	
Stormwater Pit	
Water Main	
Water Conduit	
Water Service Point of Entry	
Underground Electricity, Street Light, Electricity Pillar & NBN	
Developer Fencing	
Concrete Pathway	
Zero Setback Building Line	
Landscape Street Tree	
Indicative Building Envelope	
Bin Pads	
Proposed Services Easement	
Indicative Parking Access Location	

ADDITIONAL NOTES:

Allotments used as Multiple Residential Allotments in accordance with the approved Plan of Development may have a reduced primary road setback to 3.0metres as noted on the Plan of Development Table.

Compaction of any fill material placed on this site shall be completed to level one inspection and testing services in accordance with AS3798-2007.

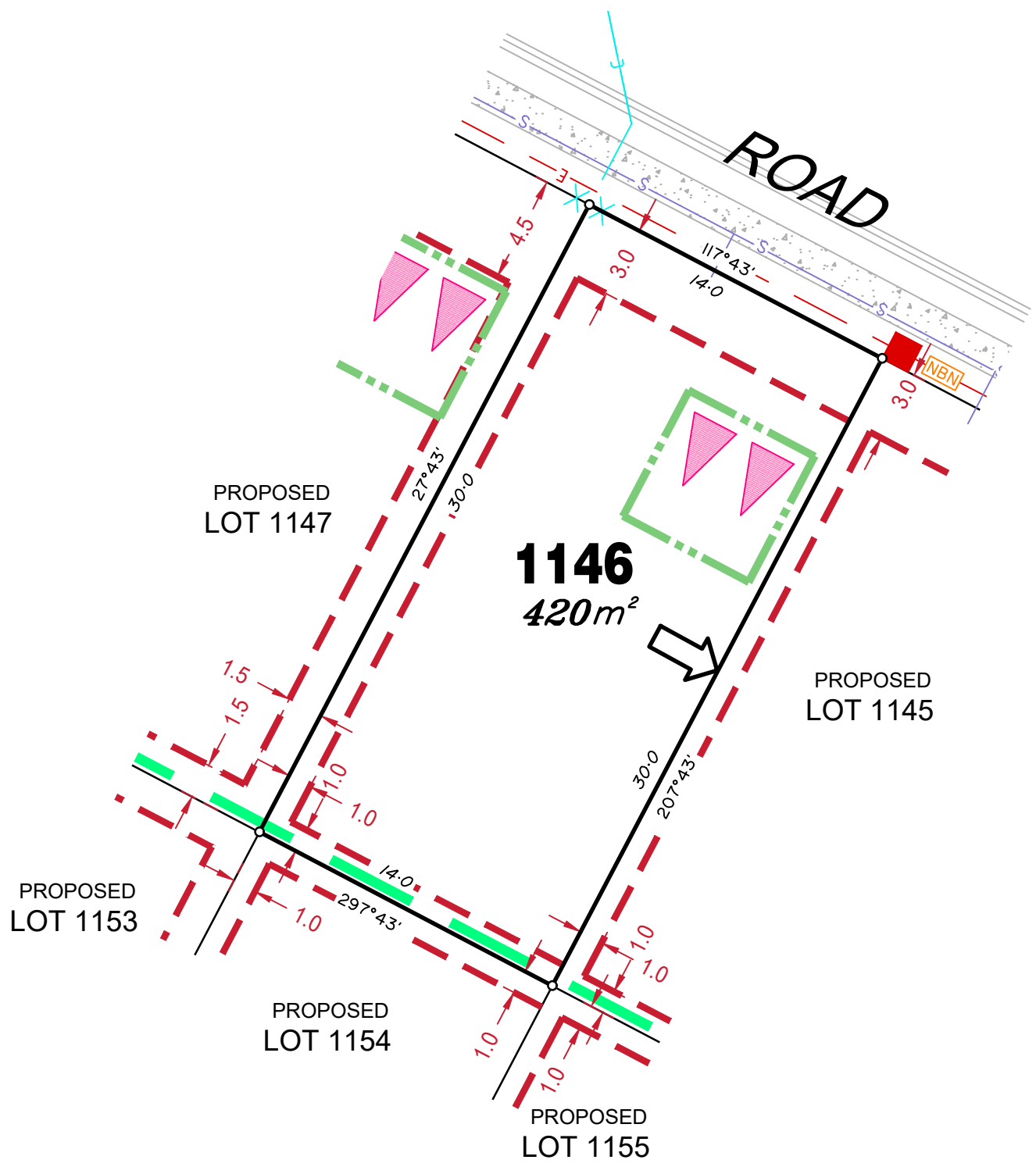
Location of sewer, roofwater, stormwater, water reticulation and electricity lines, manholes and pits are those shown on engineering design drawings, supplied by Peak Urban and Meinhardt Urban Pty Ltd, and may differ from the as-constructed location.

Developer fencing is in accordance with approved Acoustic Report SLR Ref No:620.10512-R09-v5.0.

Plan of Development information Supplied by RPS Group PLC.

Copyright © Veris Australia Pty Ltd
26 August 2021.

Plot Date: 30 Aug, 2021
 Computer File Ref: 430109-S13B-SP-Rev A.dwg



LEGEND

- Rock Retaining Wall shown as:-
- Sleeper Retaining Wall shown as:-
- Landscape Retaining Wall shown as:-
- Sewer line
- Sewer Manhole
- Roofwater Drainage line and Catch Pit
- Stormwater Drainage Line
- Stormwater Manhole
- Stormwater Pit
- Water Main
- Water Conduit
- Water Service Point of Entry
- Underground Electricity, Street Light, Electricity Pillar & NBN
- Developer Fencing
- Concrete Pathway
- Zero Setback Building Line
- Landscape Street Tree
- Indicative Building Envelope
- Bin Pads
- Proposed Services Easement
- Indicative Parking Access Location

ADDITIONAL NOTES:

Allotments used as Multiple Residential Allotments in accordance with the approved Plan of Development may have a reduced primary road setback to 3.0metres as noted on the Plan of Development Table.

Compaction of any fill material placed on this site shall be completed to level one inspection and testing services in accordance with AS3798-2007.

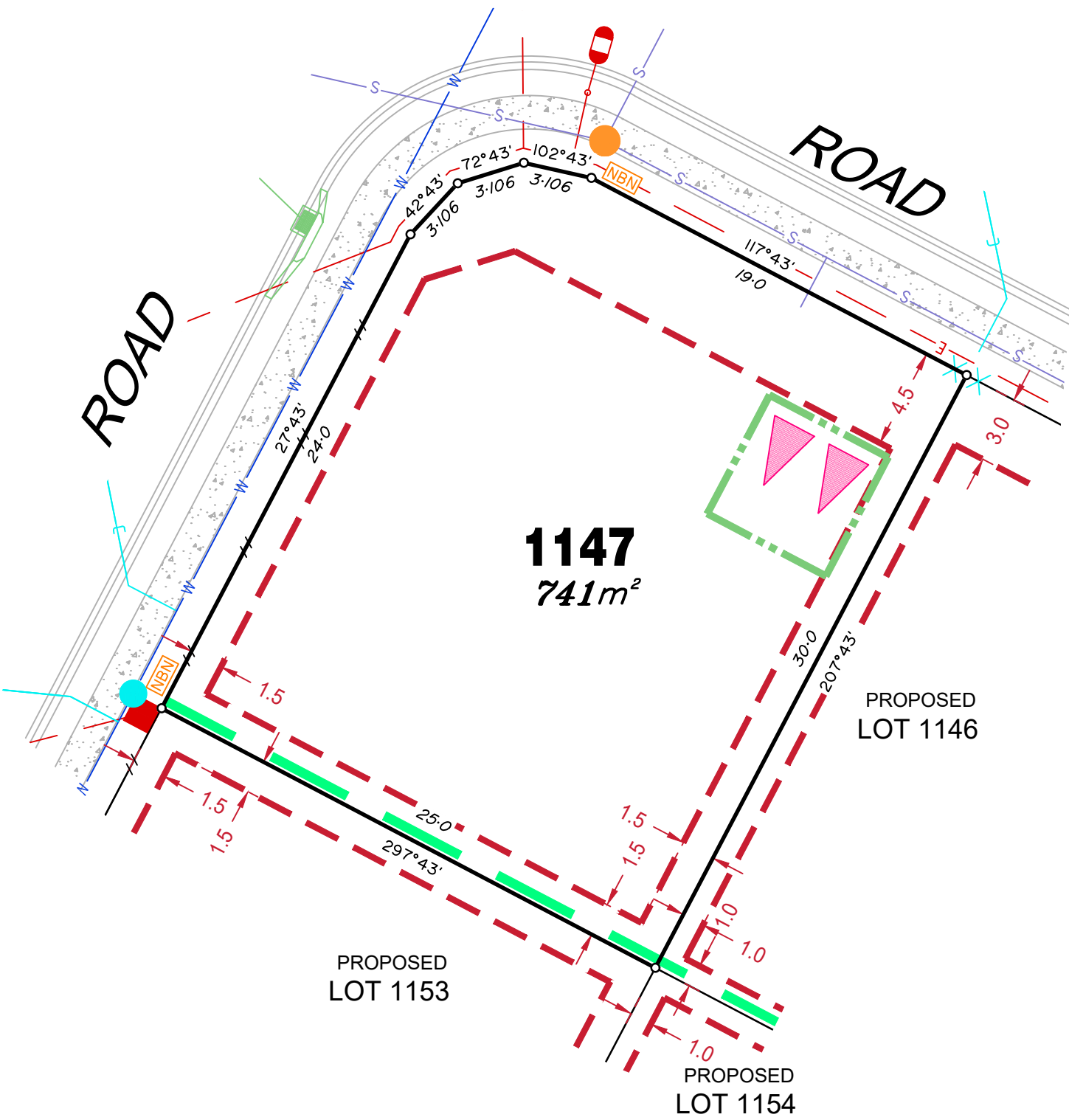
Location of sewer, roofwater, stormwater, water reticulation and electricity lines, manholes and pits are those shown on engineering design drawings, supplied by Peak Urban and Meinhardt Urban Pty Ltd, and may differ from the as-constructed location.

Developer fencing is in accordance with approved Acoustic Report SLR Ref No:620.10512-R09-v5.0.

Plan of Development information Supplied by RPS Group PLC.

Copyright © Veris Australia Pty Ltd
26 August 2021.

Plot Date: 30 Aug, 2021
 Computer File Ref: 430109-St3B-SP-Rev A.dwg



1147
741m²

PROPOSED
LOT 1146

PROPOSED
LOT 1153

PROPOSED
LOT 1154

LEGEND

- Rock Retaining Wall shown as:-
- Sleeper Retaining Wall shown as:-
- Landscape Retaining Wall shown as:-
- Sewer line
- Sewer Manhole
- Roofwater Drainage line and Catch Pit
- Stormwater Drainage Line
- Stormwater Manhole
- Stormwater Pit
- Water Main
- Water Conduit
- Water Service Point of Entry
- Underground Electricity, Street Light, Electricity Pillar & NBN
- Developer Fencing
- Concrete Pathway
- Zero Setback Building Line
- Landscape Street Tree
- Indicative Building Envelope
- Bin Pads
- Proposed Services Easement
- Indicative Parking Access Location

ADDITIONAL NOTES:

Allotments used as Multiple Residential Allotments in accordance with the approved Plan of Development may have a reduced primary road setback to 3.0metres as noted on the Plan of Development Table.

Compaction of any fill material placed on this site shall be completed to level one inspection and testing services in accordance with AS3798-2007.

Location of sewer, roofwater, stormwater, water reticulation and electricity lines, manholes and pits are those shown on engineering design drawings, supplied by Peak Urban and Meinhardt Urban Pty Ltd, and may differ from the as-constructed location.

Developer fencing is in accordance with approved Acoustic Report SLR Ref No:620.10512-R09-v5.0.

Plan of Development information Supplied by RPS Group PLC.

Copyright © Veris Australia Pty Ltd
26 August 2021.

Plot Date: 02 Sep, 2021
Computer File Ref: 430109-SI3B-SP-Rev A.dwg

PROPOSED
LOT 1145

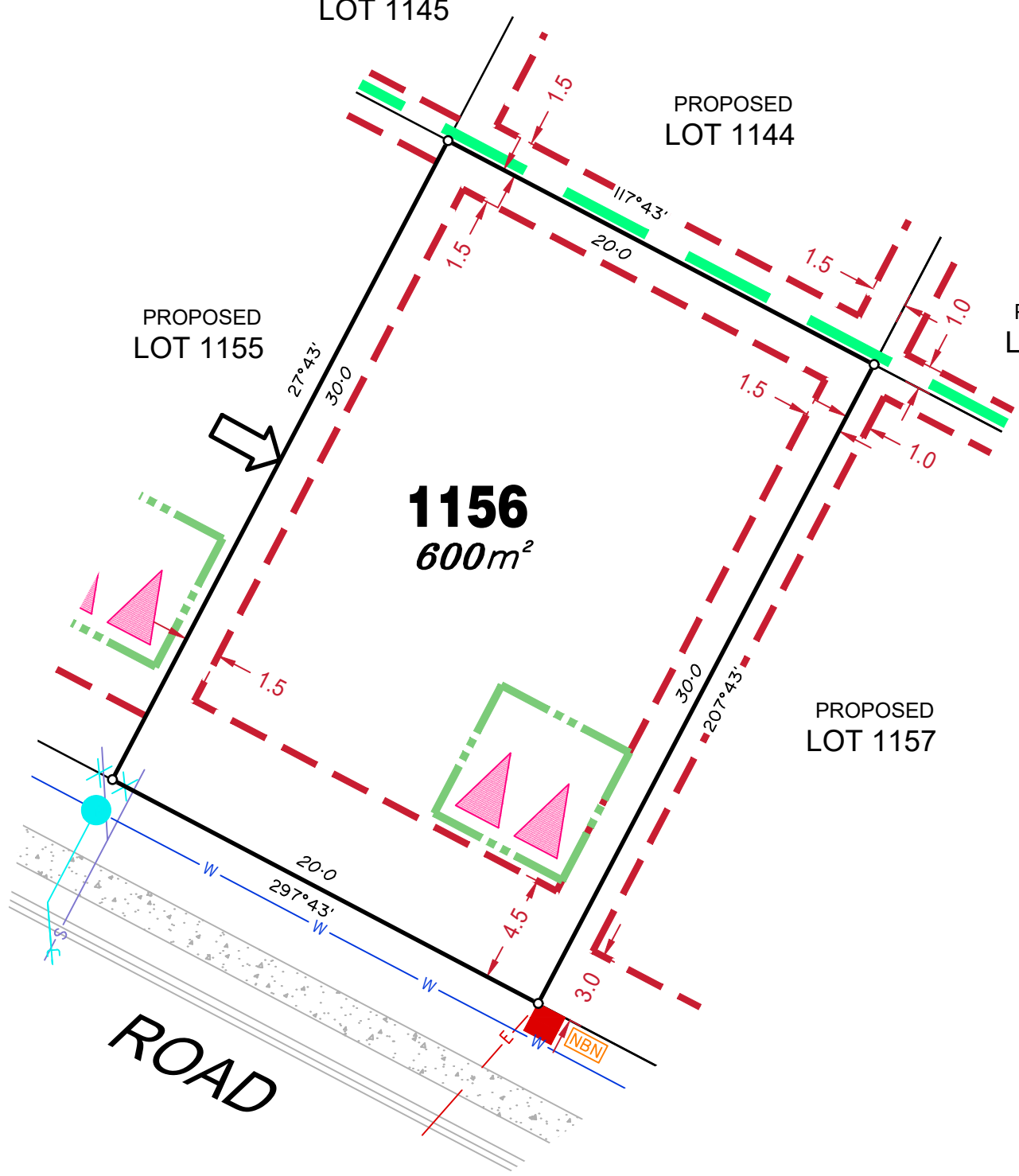
PROPOSED
LOT 1144

PROPOSED
LOT 1143

PROPOSED
LOT 1155

1156
600m²

PROPOSED
LOT 1157



LEGEND

Rock Retaining Wall shown as:-	
Sleeper Retaining Wall shown as:-	
Landscape Retaining Wall shown as:-	
Sewer line	
Sewer Manhole	
Roofwater Drainage line and Catch Pit	
Stormwater Drainage Line	
Stormwater Manhole	
Stormwater Pit	
Water Main	
Water Conduit	
Water Service Point of Entry	
Underground Electricity, Street Light, Electricity Pillar & NBN	
Developer Fencing	
Concrete Pathway	
Zero Setback Building Line	
Landscape Street Tree	
Indicative Building Envelope	
Bin Pads	
Proposed Services Easement	
Indicative Parking Access Location	

ADDITIONAL NOTES:

Allotments used as Multiple Residential Allotments in accordance with the approved Plan of Development may have a reduced primary road setback to 3.0metres as noted on the Plan of Development Table.

Compaction of any fill material placed on this site shall be completed to level one inspection and testing services in accordance with AS3798-2007.

Location of sewer, roofwater, stormwater, water reticulation and electricity lines, manholes and pits are those shown on engineering design drawings, supplied by Peak Urban and Meinhardt Urban Pty Ltd, and may differ from the as-constructed location.

Developer fencing is in accordance with approved Acoustic Report SLR Ref No:620.10512-R09-v5.0.

Plan of Development information Supplied by RPS Group PLC.

Copyright © Veris Australia Pty Ltd
26 August 2021.

Plot Date: 30 Aug. 2021
Computer File Ref: 430109-St3B-SP-Rev A.dwg

ROAD

LEGEND

Rock Retaining Wall shown as:-	
Sleeper Retaining Wall shown as:-	
Landscape Retaining Wall shown as:-	
Sewer line	
Sewer Manhole	
Roofwater Drainage line and Catch Pit	
Stormwater Drainage Line	
Stormwater Manhole	
Stormwater Pit	
Water Main	
Water Conduit	
Water Service Point of Entry	
Underground Electricity, Street Light, Electricity Pillar & NBN	
Developer Fencing	
Concrete Pathway	
Zero Setback Building Line	
Landscape Street Tree	
Indicative Building Envelope	
Bin Pads	
Proposed Services Easement	
Indicative Parking Access Location	

ADDITIONAL NOTES:

Allotments used as Multiple Residential Allotments in accordance with the approved Plan of Development may have a reduced primary road setback to 3.0metres as noted on the Plan of Development Table.

Compaction of any fill material placed on this site shall be completed to level one inspection and testing services in accordance with AS3798-2007.

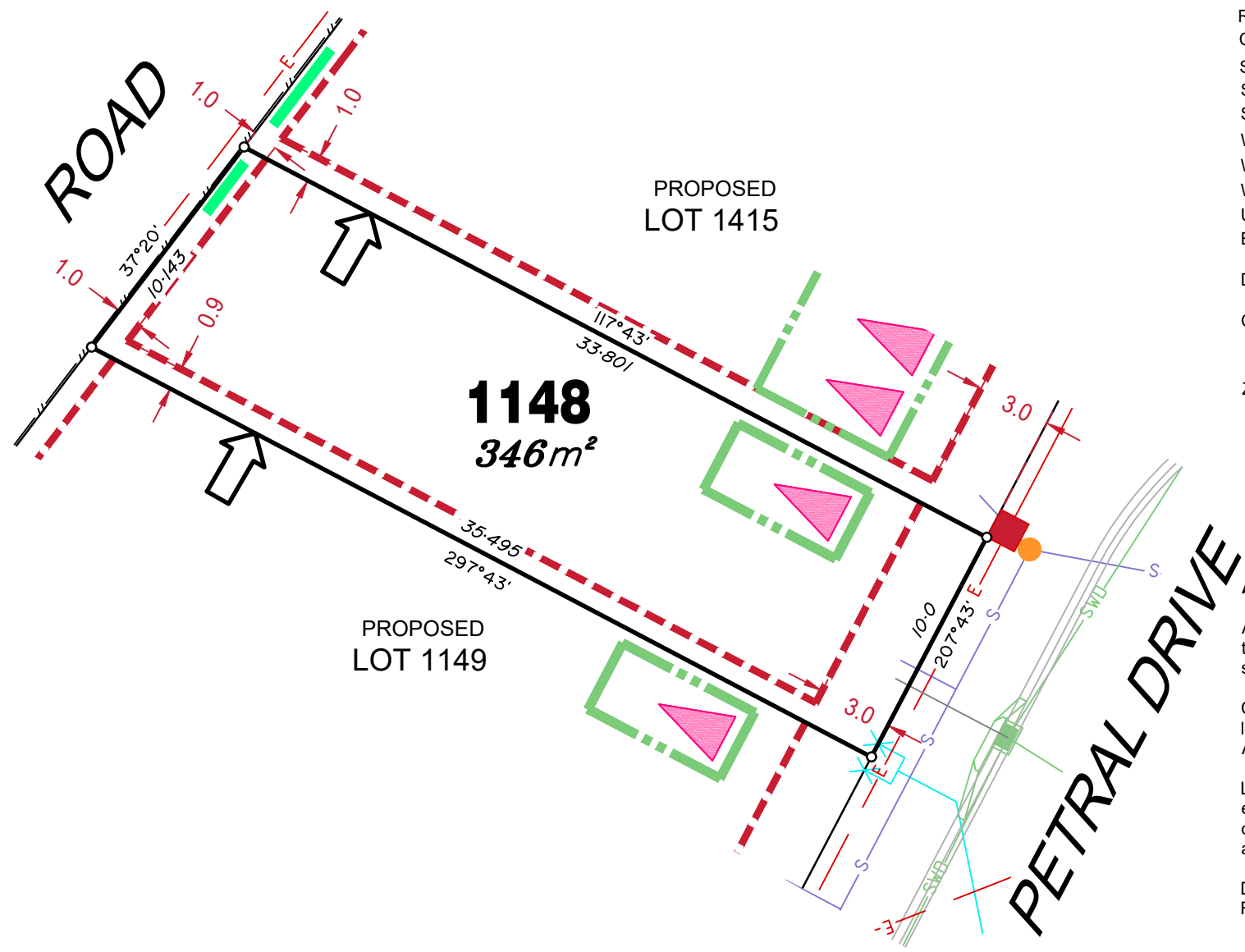
Location of sewer, roofwater, stormwater, water reticulation and electricity lines, manholes and pits are those shown on engineering design drawings, supplied by Peak Urban and may differ from the as-constructed location.

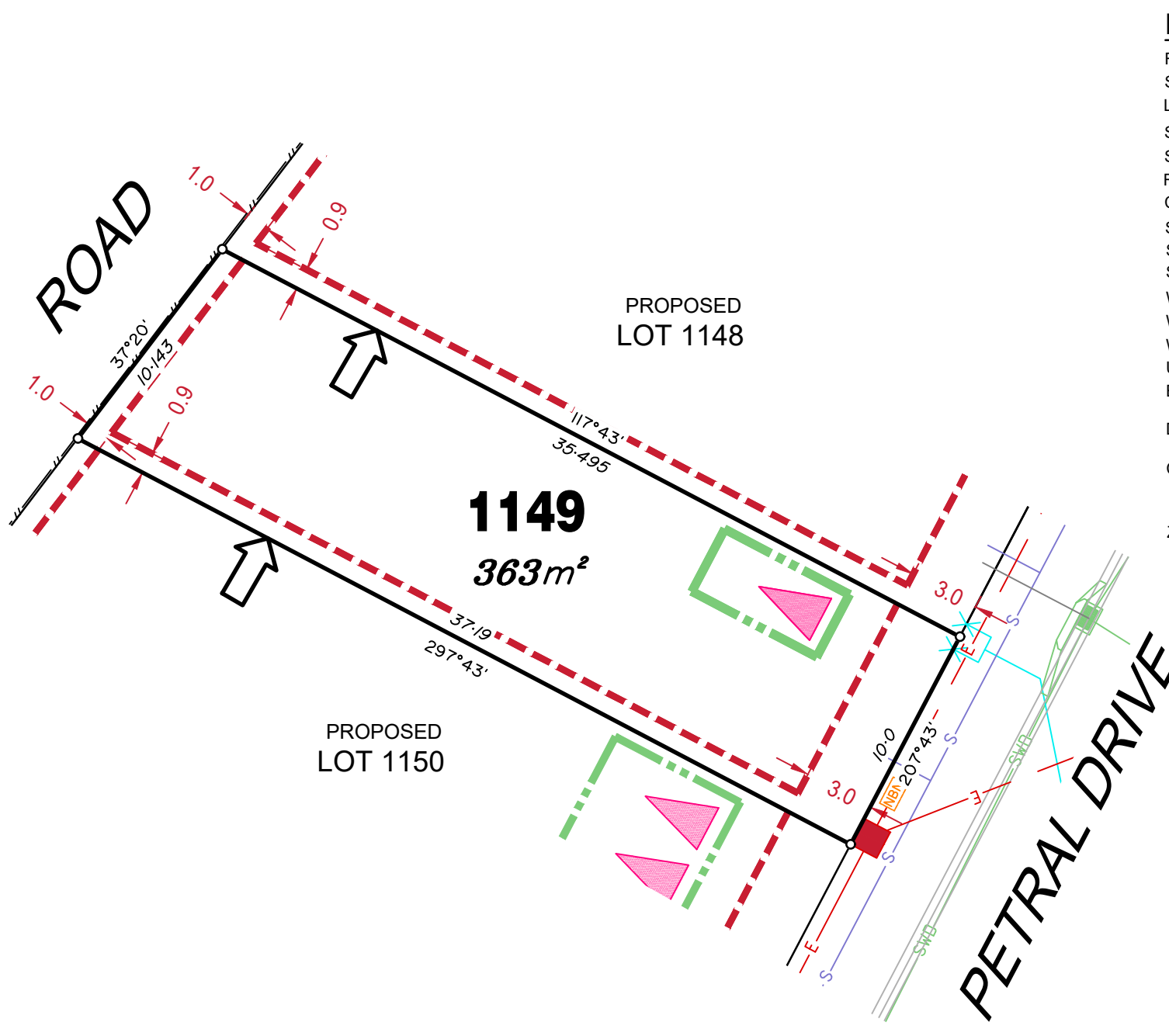
Developer fencing is in accordance with Stage 3A, 3B Fence Strategy Rev D.

Plan of Development information Supplied by RPS Group PLC.

Copyright © Veris Australia Pty Ltd
15 February 2022.

Plot Date: 16 Feb, 2022
 Computer File Ref: 430109-St3B-SP-Rev B.dwg





LEGEND

- Rock Retaining Wall shown as:-
- Sleeper Retaining Wall shown as:-
- Landscape Retaining Wall shown as:-
- Sewer line
- Sewer Manhole
- Roofwater Drainage line and Catch Pit
- Stormwater Drainage Line
- Stormwater Manhole
- Stormwater Pit
- Water Main
- Water Conduit
- Water Service Point of Entry
- Underground Electricity, Street Light, Electricity Pillar & NBN
- Developer Fencing
- Concrete Pathway
- Landscape Street Tree
- Zero Setback Building Line
- Indicative Building Envelope
- Bin Pads
- Proposed Services Easement
- Indicative Parking Access Location

ADDITIONAL NOTES:

Allotments used as Multiple Residential Allotments in accordance with the approved Plan of Development may have a reduced primary road setback to 3.0metres as noted on the Plan of Development Table.

Compaction of any fill material placed on this site shall be completed to level one inspection and testing services in accordance with AS3798-2007.

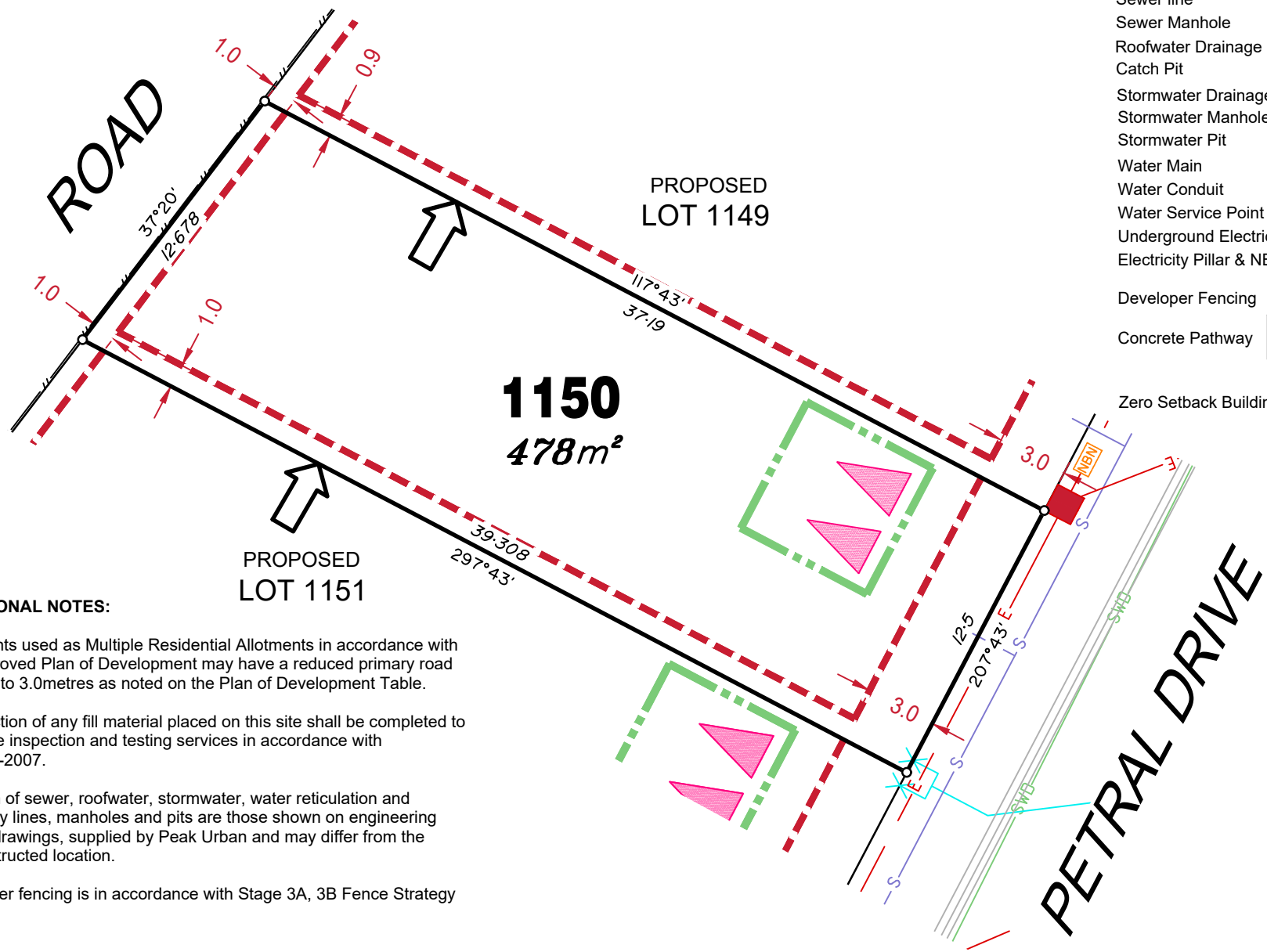
Location of sewer, roofwater, stormwater, water reticulation and electricity lines, manholes and pits are those shown on engineering design drawings, supplied by Peak Urban and may differ from the as-constructed location.

Developer fencing is in accordance with Stage 3A, 3B Fence Strategy Rev D.

Plan of Development information Supplied by RPS Group PLC.

LEGEND

Rock Retaining Wall shown as:-	
Sleeper Retaining Wall shown as:-	
Landscape Retaining Wall shown as:-	
Sewer line	
Sewer Manhole	
Roofwater Drainage line and Catch Pit	
Stormwater Drainage Line	
Stormwater Manhole	
Stormwater Pit	
Water Main	
Water Conduit	
Water Service Point of Entry	
Underground Electricity, Street Light, Electricity Pillar & NBN	
Developer Fencing	
Concrete Pathway	
Landscape Street Tree	
Zero Setback Building Line	
Indicative Building Envelope	
Bin Pads	
Proposed Services Easement	
Indicative Parking Access Location	



ADDITIONAL NOTES:

- Allotments used as Multiple Residential Allotments in accordance with the approved Plan of Development may have a reduced primary road setback to 3.0metres as noted on the Plan of Development Table.
- Compaction of any fill material placed on this site shall be completed to level one inspection and testing services in accordance with AS3798-2007.
- Location of sewer, roofwater, stormwater, water reticulation and electricity lines, manholes and pits are those shown on engineering design drawings, supplied by Peak Urban and may differ from the as-constructed location.
- Developer fencing is in accordance with Stage 3A, 3B Fence Strategy Rev D.

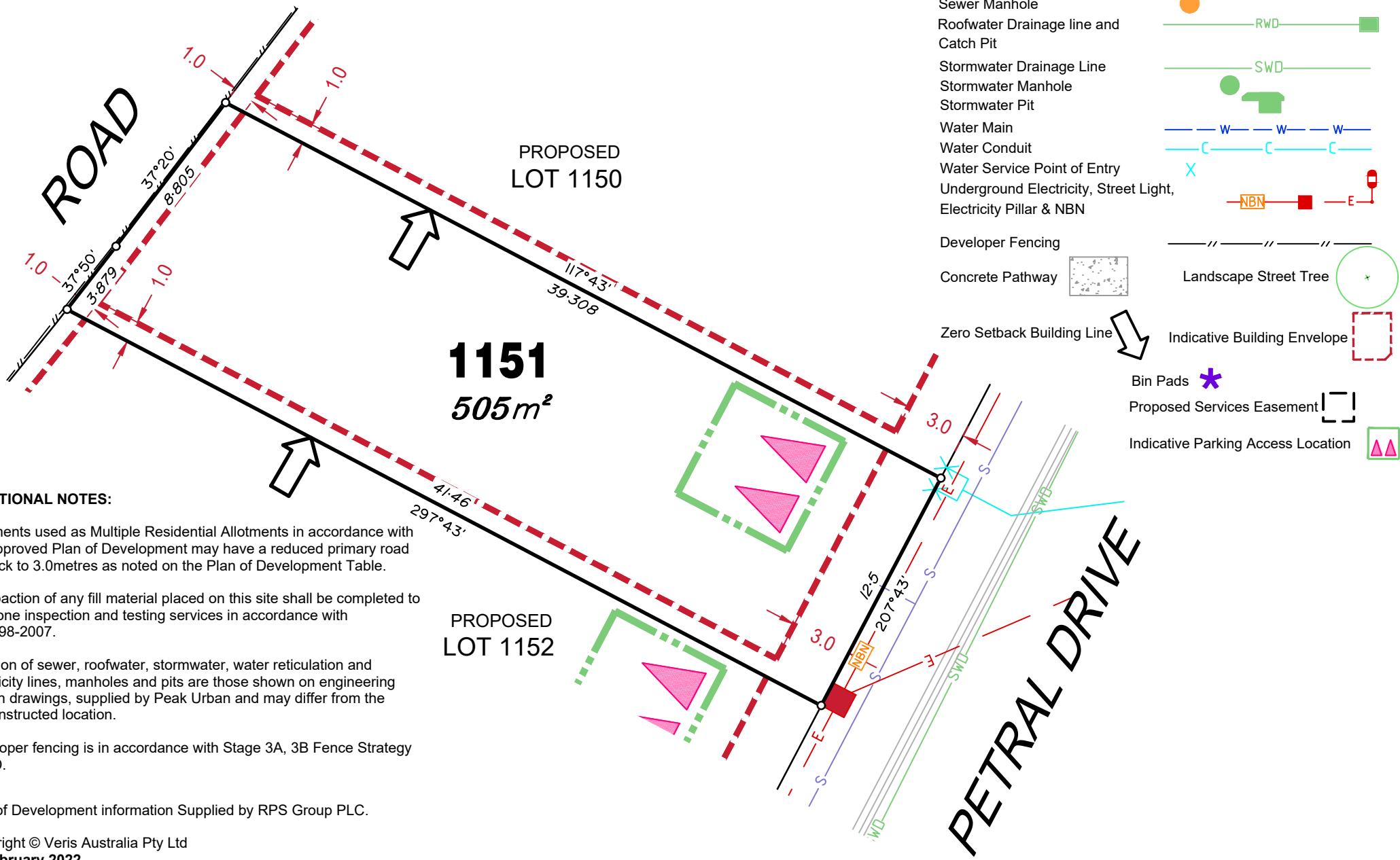
Plan of Development information Supplied by RPS Group PLC.

Copyright © Veris Australia Pty Ltd
15 February 2022.

Plot Date: 16 Feb, 2022
 Computer File Ref: 430109-St3B-SP-Rev B.dwg

LEGEND

Rock Retaining Wall shown as:-	
Sleeper Retaining Wall shown as:-	
Landscape Retaining Wall shown as:-	
Sewer line	
Sewer Manhole	
Roofwater Drainage line and Catch Pit	
Stormwater Drainage Line	
Stormwater Manhole	
Stormwater Pit	
Water Main	
Water Conduit	
Water Service Point of Entry	
Underground Electricity, Street Light, Electricity Pillar & NBN	
Developer Fencing	
Concrete Pathway	
Zero Setback Building Line	
Indicative Building Envelope	
Bin Pads	
Proposed Services Easement	
Indicative Parking Access Location	
Landscape Street Tree	



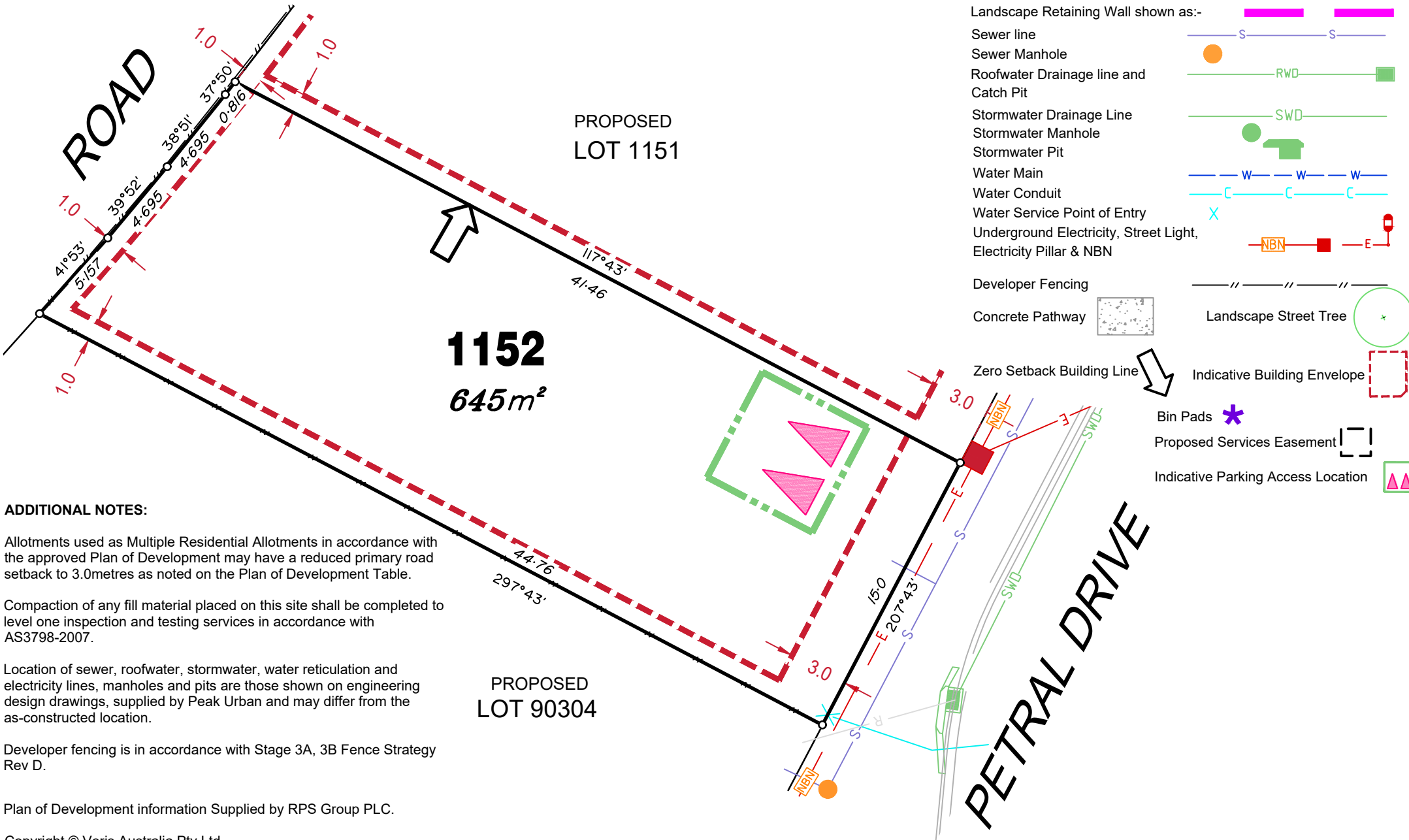
ADDITIONAL NOTES:

- Allotments used as Multiple Residential Allotments in accordance with the approved Plan of Development may have a reduced primary road setback to 3.0metres as noted on the Plan of Development Table.
- Compaction of any fill material placed on this site shall be completed to level one inspection and testing services in accordance with AS3798-2007.
- Location of sewer, roofwater, stormwater, water reticulation and electricity lines, manholes and pits are those shown on engineering design drawings, supplied by Peak Urban and may differ from the as-constructed location.
- Developer fencing is in accordance with Stage 3A, 3B Fence Strategy Rev D.

Plan of Development information Supplied by RPS Group PLC.

Copyright © Veris Australia Pty Ltd
15 February 2022.

Plot Date: 16 Feb, 2022
 Computer File Ref: 430109-St3B-SP-Rev B.dwg



LEGEND

- Rock Retaining Wall shown as:-
- Sleeper Retaining Wall shown as:-
- Landscape Retaining Wall shown as:-
- Sewer line
- Sewer Manhole
- Roofwater Drainage line and Catch Pit
- Stormwater Drainage Line
- Stormwater Manhole
- Stormwater Pit
- Water Main
- Water Conduit
- Water Service Point of Entry
- Underground Electricity, Street Light, Electricity Pillar & NBN
- Developer Fencing
- Concrete Pathway
- Landscape Street Tree
- Zero Setback Building Line
- Indicative Building Envelope
- Bin Pads
- Proposed Services Easement
- Indicative Parking Access Location

ADDITIONAL NOTES:

Allotments used as Multiple Residential Allotments in accordance with the approved Plan of Development may have a reduced primary road setback to 3.0metres as noted on the Plan of Development Table.

Compaction of any fill material placed on this site shall be completed to level one inspection and testing services in accordance with AS3798-2007.

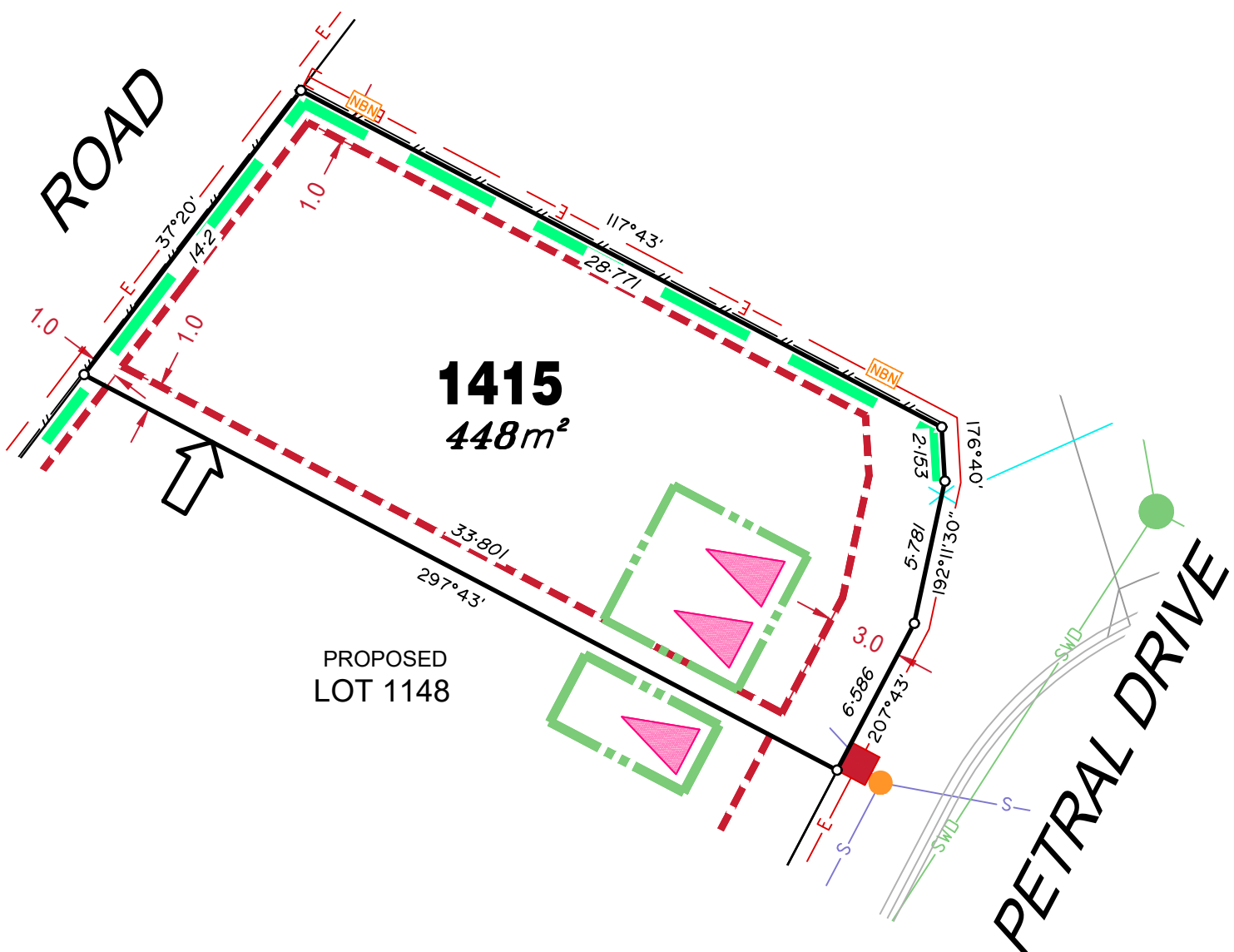
Location of sewer, roofwater, stormwater, water reticulation and electricity lines, manholes and pits are those shown on engineering design drawings, supplied by Peak Urban and may differ from the as-constructed location.

Developer fencing is in accordance with Stage 3A, 3B Fence Strategy Rev D.

Plan of Development information Supplied by RPS Group PLC.

Copyright © Veris Australia Pty Ltd
15 February 2022.

Plot Date: 16 Feb, 2022
 Computer File Ref: 430109-St3B-SP-Rev B.dwg



LEGEND

Rock Retaining Wall shown as:-	
Sleeper Retaining Wall shown as:-	
Landscape Retaining Wall shown as:-	
Sewer line	
Sewer Manhole	
Roofwater Drainage line and Catch Pit	
Stormwater Drainage Line	
Stormwater Manhole	
Stormwater Pit	
Water Main	
Water Conduit	
Water Service Point of Entry	
Underground Electricity, Street Light, Electricity Pillar & NBN	
Developer Fencing	
Concrete Pathway	
Zero Setback Building Line	
Landscape Street Tree	
Indicative Building Envelope	
Bin Pads	
Proposed Services Easement	
Indicative Parking Access Location	

ADDITIONAL NOTES:

Allotments used as Multiple Residential Allotments in accordance with the approved Plan of Development may have a reduced primary road setback to 3.0metres as noted on the Plan of Development Table.

Compaction of any fill material placed on this site shall be completed to level one inspection and testing services in accordance with AS3798-2007.

Location of sewer, roofwater, stormwater, water reticulation and electricity lines, manholes and pits are those shown on engineering design drawings, supplied by Peak Urban and may differ from the as-constructed location.

Developer fencing is in accordance with Stage 3A, 3B Fence Strategy Rev D.

Plan of Development information Supplied by RPS Group PLC.

Copyright © Veris Australia Pty Ltd
15 February 2022.

Plot Date: 16 Feb, 2022
 Computer File Ref: 430109-St3B-SP-Rev B.dwg