

PSM191027  
 E: 495937.616  
 N: 7003052.339  
 RL: 8.767m

**LEGEND:**

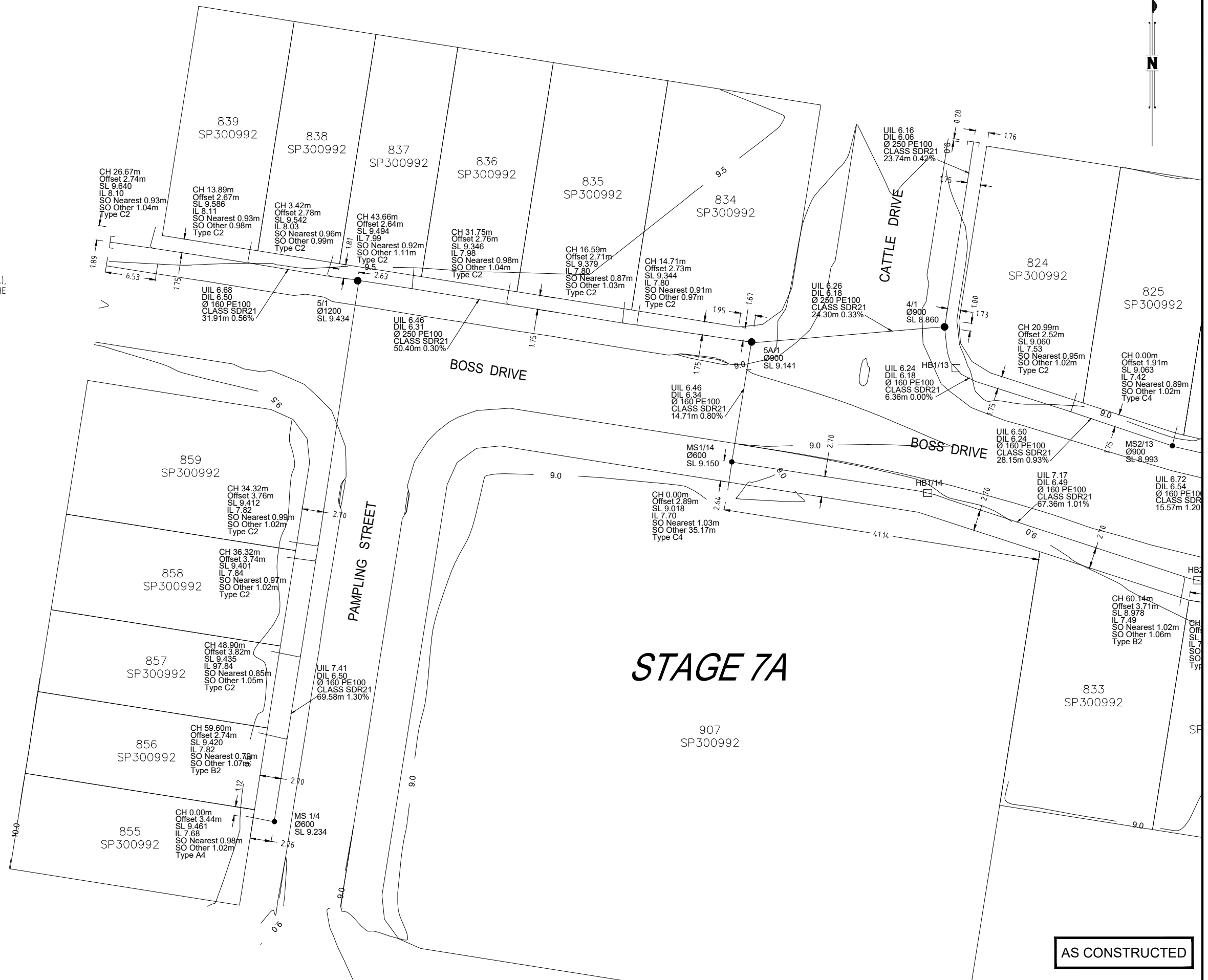
- NEW SEWER MAIN
- s— EXISTING SEWER MAIN
- /— NEW HOUSE CONNECTION
- SEWER MAINTENANCE HOLE
- SEWER MAINTENANCE SHAFT U.N.O.
- ] SEWER EOL

**NOTE:**

- ALL SEWER MAINS DN160 PE100 CLASS SDR21 U.N.O.
- ALL MAINTENANCE HOLES (MH) 1200Ø CONCRETE INSITU U.N.O.
- ALL MAINTENANCE SHAFTS (MS) 600Ø SERVICESTREAM PE100

**COORDINATE DATUM NOTE:**

HORIZONTAL COORDINATES(E,N) SUPPLIED ARE MAPPING GRID OF AUSTRALIA(MGA), ZONE 56 BASED ON THE UNIVERSAL TRANSVERSE MERCATOR PROJECTION AND THE GEOCENTRIC DATUM OF AUSTRALIA 1994.  
 HORIZONTAL DATUM DERIVED FROM PSM191027, E 495937.616, N 7003052.339.  
 LEVELS SUPPLIED ARE ON THE AUSTRALIAN HEIGHT DATUM(AHD)  
 LEVEL DATUM DERIVED FROM PSM191027 RL 8.767 (AHD)



**STAGE 7A**

**ENGINEER'S CERTIFICATION**

I, \_\_\_\_\_, hereby certify that:

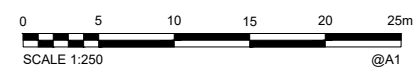
- The information contained in this drawing / document is in compliance with approved drawings and design.
- The new water and sewerage works defined by this drawing have been designed and constructed in accordance with the SEQ Code.
- This represents an accurate record of as-constructed works
- I accept responsibility for the information contained in this drawing / document.

RPEQ (signature) RPEQ No. \_\_\_\_\_ Date: \_\_\_\_\_

**REGISTERED SURVEYOR'S CERTIFICATION**

I, Andrew Robert Thurston, hereby certify that the vertical and horizontal locations and dimensions shown on this plan are a true and correct record and were located by survey.

Registered Surveyor (sig) Reg. Surveyor No. 3047 Date: 03/10/2018



**AS CONSTRUCTED**

<b>A1</b>	INDEX	DATE	REVISIONS	DRAWN	CHECKED	PASSED	INITIALS	DATE
	A	03/10/2018	As Constructed	DM	ADH	AT		

**WOLTER consulting group**

Planning Urban Design Landscape Environment Surveying

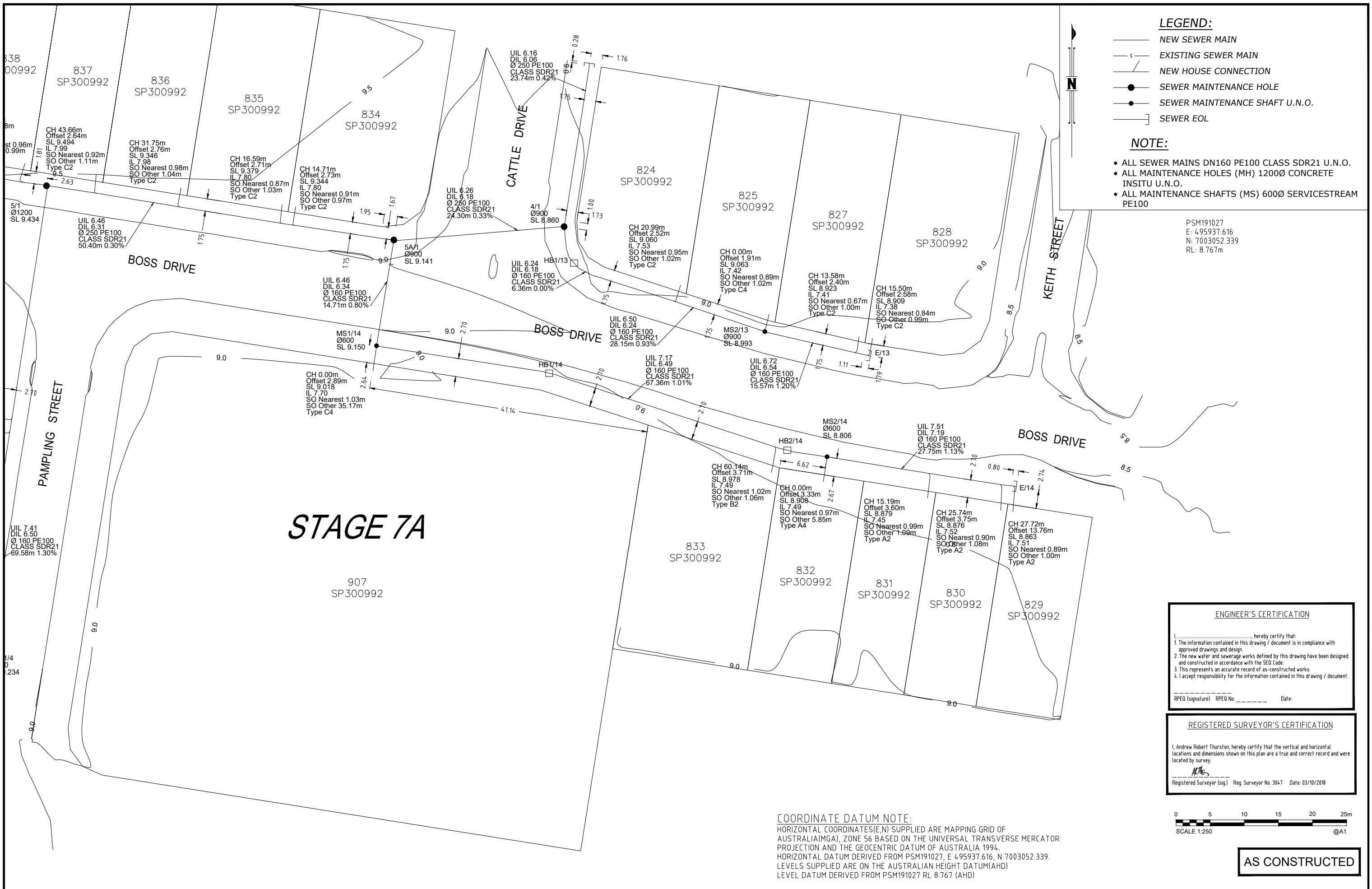
Brisbane Level 2, 1 Breakfast Ck Road, Newstead, QLD 4006 Phone: (07) 3666 5200



**Unitywater**

17-002275.1  
 RIVERBANK - STAGE 7A  
 As-Constructed Sewer Reticulation  
 2017011038 (7A)

SHEET 1 OF 2 SHEETS	SCALE 1:250
REVISION DATE 03/10/2018	REVISION A
DISCIPLINE CODE C	
DRAWING NO. U-2018-0767	



PSM191027  
 E: 495937.616  
 N: 7003052.339  
 RL: 8.767m

**ENGINEER'S CERTIFICATION**

I, \_\_\_\_\_ hereby certify that:

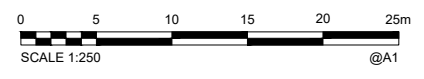
- The information contained in this drawing / document is in compliance with approved drawings and design.
- The new water and sewerage works defined by this drawing have been designed and constructed in accordance with the SEQ Code.
- This represents an accurate record of as-constructed works.
- I accept responsibility for the information contained in this drawing / document.

RP&Q (signature) RP&Q No. \_\_\_\_\_ Date: \_\_\_\_\_

**REGISTERED SURVEYOR'S CERTIFICATION**

I, Andrew Robert Thurston, hereby certify that the vertical and horizontal locations and dimensions shown on this plan are a true and correct record and were located by survey.

*ATG*  
 Registered Surveyor (sig) Reg. Surveyor No. 3047 Date: 03/10/2018



**AS CONSTRUCTED**

<b>A1</b>	INDEX	DATE	As Constructed	DM	ADH	AT	DRAWN	CHECKED	PASSED	INITIALS	DATE
	A	03/10/2018	As Constructed	DM	ADH	AT					

**WOLTER consulting group**

Planning Urban Design Landscape Environment Surveying

Brisbane Level 2, 1 Breakfast Ck Road, Newstead, QLD 4006 Phone: (07) 3666 5200



**Unitywater**

17-002275.1  
 RIVERBANK - STAGE 7A  
 As-Constructed Sewer Reticulation  
 2017011038 (7A)

SHEET 2 OF 2 SHEETS	SCALE 1:250
REVISION DATE 03/10/2018	REVISION A
DISCIPLINE CODE C	
DRAWING NO. U-2018-0767	