

NEWHAVEN STAGE 13 PEET NO. 1895 PTY LTD

GENERAL NOTES:

SURVEY

- ALL LEVELS ARE TO AUSTRALIAN HEIGHT DATUM AND ALL COORDINATES ARE TO MAP GRID OF AUSTRALIA (MGA) 94, ZONE 55.
- ALL EXISTING SURFACE LEVELS SHOWN ON THE ENGINEERING DRAWINGS HAVE BEEN INTERPOLATED FROM A DIGITAL TERRAIN MODEL. THESE LEVELS HAVE BEEN USED AS THE BASIS FOR ALL ENGINEERING DESIGN AND DETERMINATION OF QUANTITIES AND ARE ACCURATE TO WITHIN ±0.05m.
- ALL WORKS TO BE CARRIED OUT IN ACCORDANCE WITH PEET'S MODIFIED AS4000-1997-AMENDED FROM GENERAL CONDITIONS OF CONTRACT FOR USE IN VICTORIA, THE ROAD & DRAINAGE SPECIFICATION, APPROVED MUNICIPALITY SPECIFICATIONS AND STANDARD DRAWINGS AND TO THE SATISFACTION OF THE SUPERINTENDENT AND THE MUNICIPAL ENGINEER OR HIS REPRESENTATIVE.
- ROAD CHAINAGES REFER TO ROAD CENTRELINES. CHAINAGES FOR INTERSECTIONS AND CUL-DE-SACS REFER TO THE LIP OF KERB

EARTHWORKS

- THE LOCATION OF EXISTING SERVICES SHOULD BE DETERMINED BY THE CONTRACTOR PRIOR TO COMMENCING ANY EXCAVATION BY CONTACTING ALL LOCAL SERVICE AUTHORITIES. ANY EXISTING SERVICES SHOWN ON THESE DRAWINGS ARE OFFERED AS A GUIDE ONLY AND ARE NOT GUARANTEED AS CORRECT.
- WHERE REQUIRED ANY BUILDINGS, TRENCHES, FENCES AND OTHER STRUCTURES ON SITE ARE TO BE REMOVED AS DIRECTED BY THE ENGINEER. THE COST OF REMOVAL IS TO BE INCLUDED IN THE OVERALL EARTHWORKS FIGURE UNLESS A SPECIFIC ITEM FOR REMOVAL IS DENOTED IN THE SCHEDULE.
- ALL EXCAVATED ROCK AND SURPLUS SPOIL TO BE REMOVED AND DISPOSED OFF SITE UNLESS NOTED OTHERWISE.
- ALL FILLING ON LOTS AND WITHIN ROAD RESERVES GREATER THAN 200mm IS TO BE UNDERTAKEN USING LEVEL 1 SUPERVISION AND BE COMPLETED IN ACCORDANCE WITH AS 3798-2007. FILL AREAS ARE TO BE STRIPPED OF TOPSOIL, FILLED AND REPLACED WITH TOPSOIL (WHERE REQUIRED) TO OBTAIN THE FINAL LEVELS SHOWN ON THE DRAWINGS.
- FILLING MATERIAL IS TO BE IN ACCORDANCE WITH THE SPECIFICATION, AS 3798-2007 & TO THE SATISFACTION OF COUNCIL AND THE SUPERINTENDENT.
- ALL BATTERS SHALL BE 1 IN 6, UNLESS OTHERWISE SHOWN.
- NO FILL OR STOCKPILING OF MATERIAL IS TO BE PLACED ON ANY RESERVE FOR PUBLIC OPEN SPACE UNLESS OTHERWISE DIRECTED OR APPROVED BY THE SUPERINTENDENT.
- TBM'S TO BE RE-ESTABLISHED BY THE LICENSED SURVEYOR IF FOUND TO BE MISSING AT THE COMMENCEMENT OF CONSTRUCTION. THE CONTRACTOR WILL BE RESPONSIBLE FOR CARE AND MAINTENANCE OF T.B.M.'S THEREAFTER.
- AT LEAST 3 DAYS PRIOR TO COMMENCING WORK ON EXCAVATIONS IN EXCESS OF 150mm DEEP, A NOTIFICATION FORM MUST BE SENT TO WORKSAFE. THE CONTRACTOR IS TO COMPLY WITH WORKSAFE, THE MINES (TRENCHES) REGULATION 1982, THE MINES ACT 1958 AND OCCUPATIONAL HEALTH AND SAFETY ACT 1985, 2004.
- ALL SERVICE TRENCHES UNDER DRIVEWAYS, FOOTPATHS AND PARKING BAYS TO BE BACKFILLED WITH CLASS 2 CRUSHED ROCK. SERVICE TRENCHES LESS THAN 750mm BEHIND KERB AND CHANNEL OR PAVED TRAFFIC AREAS ARE ALSO TO BE BACKFILLED WITH COMPACTED CLASS 2 CRUSHED ROCK.
- WHERE REQUIRED, ALL EXISTING DAMS, DEPRESSIONS AND DRAINS ARE TO BE BREACHED, DRAINED, DESLUDGED AND SHALL BE EXCAVATED TO A CLEAN FIRM BASE. THE SURFACE SHALL BE INSPECTED, APPROVED AND LEVELED BY THE ENGINEER PRIOR TO COMMENCEMENT OF FILLING. THE FILL SHALL BE APPROVED SELECTED ON SITE MATERIAL OR APPROVED IMPORTED MATERIAL. THE FILL SHALL BE PLACED UNDER CONTROLLED MOISTURE CONDITIONS IN ACCORDANCE WITH THE SPECIFICATION
- NO BLASTING TO BE CARRIED OUT WITHIN THE MUNICIPALITY WITHOUT OBTAINING COUNCIL'S PERMISSION.

SERVICES

- GAS AND WATER CONDUITS ARE TO BE, Ø50mm . CLASS 12 P.V.C. - SINGLE SERVICE
Ø100mm . CLASS 12 P.V.C. - DUAL SERVICE (DRINKING AND NON DRINKING WATER)
WITH THE FOLLOWING MINIMUM COVER TO FINISHED SURFACE LEVELS:
ROAD PAVEMENT - 0.80m
VERGE, FOOTPATHS - 0.45m
- ALL SERVICE CONDUIT TRENCHES UNDER ROAD PAVEMENTS TO BE BACKFILLED IN ACCORDANCE WITH RELEVANT MUNICIPALITY OR ROAD AUTHORITY SPECIFICATION.
- TELSTRA ARE TO BE NOTIFIED 7 DAYS PRIOR TO PLACEMENT OF CONCRETE WORKS.

STORM WATER DRAINAGE

- AG/SUBSOIL DRAIN TO BE LAID BEHIND KERB WHERE REQUIRED IN ACCORDANCE WITH THE COUNCIL STANDARD DRAWINGS AND CONNECTED TO UNDERGROUND DRAINAGE.
- ALL STORMWATER DRAINS ARE TO BE CLASS '2' R.C. PIPES UNLESS OTHERWISE SHOWN. ALL R.C. JOINTS ARE TO BE RUBBER RING JOINTED (R.R.J.).
- CENTRELINES OF ALL EASEMENT DRAINS ARE OFFSET 1.0m OR 2.2m (WHERE OUTSIDE OF SEWER) FROM THE PROPERTY LINE UNLESS SHOWN OTHERWISE.

- WHERE CURVED PIPES ARE SHOWN ON THE FACE PLANS THEY ARE TO BE LAID PARALLEL TO THE BACK OF KERB, EXCEPT WHERE A RADIUS HAS BEEN SPECIFICALLY NOMINATED. CURVED PIPES ARE TO BE APPROVED BY COUNCIL AND IN ACCORDANCE WITH THE MANUFACTURERS SPECIFICATIONS.
- HOUSE DRAIN OFFSET AT 6.00m FROM SIDE LOT BOUNDARY UNLESS NOTED OTHERWISE.

PAVEMENT

- PAVEMENT DEPTHS MAY BE MODIFIED AS DIRECTED BY THE SUPERINTENDENT. PAVEMENT TO BE BOXED OUT TO MINIMUM DEPTH DENOTED, INSPECTED AND IF SUBGRADE IS IN QUESTION, FURTHER TESTING CARRIED OUT TO DETERMINE FINAL PAVEMENT DEPTH.
- WHERE PAVEMENT IS CONSTRUCTED ON FILLING, FILL MATERIAL IS TO BE APPROVED BY THE SUPERINTENDENT AND COUNCIL, FILLING TO BE CONSTRUCTED IN LAYERS 150mm THICK WITH COMPACTION ACHIEVING 95% AUSTRALIAN STANDARD DENSITY.
- WHEN PAVEMENT EXCAVATION IS IN ROCK ALL LOOSE MATERIAL (INCLUDING ROCKS AND CLAY) MUST BE REMOVED. THE SUB-GRADE MUST THEN BE REGULATED WITH COUNCIL APPROVED MATERIAL.

SIGNAGE AND LINEMARKING

- LINEMARKING AND SIGNAGE TO BE INSTALLED IN ACCORDANCE WITH AS 1742 SERIES UNLESS NOTED OTHERWISE. STREET SIGNS ARE TO BE INSTALLED IN ACCORDANCE WITH COUNCIL STANDARDS.
- ALL TEMPORARY WARNING SIGNS USED DURING CONSTRUCTION SHALL BE SUPPLIED AND MAINTAINED IN ACCORDANCE WITH AS 1742-3.
- TACTILE GROUND SURFACE INDICATORS ARE TO BE INSTALLED IN ACCORDANCE WITH THE DISABILITY DISCRIMINATION ACT AND RELEVANT COUNCIL STANDARD DRAWINGS.

ENVIRONMENTAL

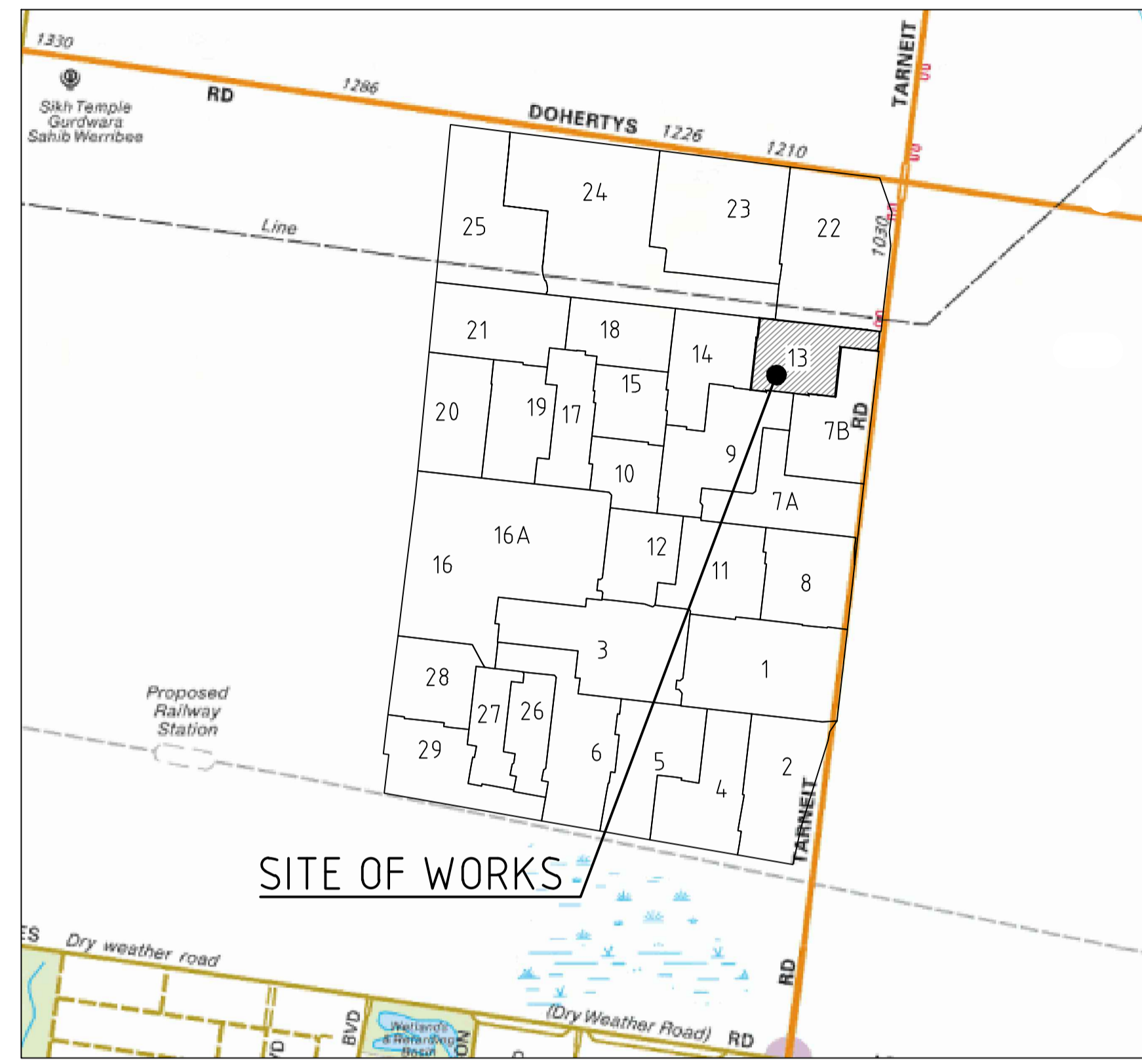
- CONTRACTOR TO PROVIDE AN ENVIRONMENTAL MANAGEMENT PLAN INCLUDING SILT AND SEDIMENT RUNOFF PROTECTION ETC. PRIOR TO THE COMMENCEMENT OF WORKS.
- ALL TREES AND SHRUBS ARE TO BE RETAINED UNLESS OTHERWISE SHOWN. IF ROAD AND DRAINAGE CONSTRUCTION NECESSITATES THEIR REMOVAL, WRITTEN PERMISSION MUST BE OBTAINED FROM THE SUPERINTENDENT.
- TREES NOT SPECIFIED FOR REMOVAL ARE TO BE PROTECTED WITH APPROPRIATE EXCLUSION FENCING PRIOR TO COMMENCEMENT OF ANY WORKS.
- THE CONTRACTOR IS REQUIRED TO OBTAIN A 'PERMIT TO WORK' FROM MELBOURNE WATER'S SURVEILLANCE OFFICER AT THE PRE-COMMENCEMENT MEETING. THE CONTRACTOR IS REQUIRED TO ENSURE THAT THE 'PERMIT TO WORK' IS KEPT UP TO DATE FOR THE DURATION OF THE CONTRACT.



WARNING
BEWARE OF UNDERGROUND/OVERHEAD SERVICES
THE LOCATION OF SERVICES ARE APPROXIMATE ONLY AND THEIR EXACT POSITION SHOULD BE PROVEN ON SITE. NO GUARANTEE IS GIVEN THAT ALL EXISTING SERVICES ARE SHOWN. SPECIAL CONSIDERATION SHOULD BE GIVEN TO CONSTRUCTION PROCEDURES UNDER OVERHEAD ELECTRICITY TRANSMISSION LINES.

WARNING
BEWARE OF TRANSMISSION LINES
TRANSMISSION POWER LINES IN CLOSE PROXIMITY OF WORKS, INDUCED ELECTRICAL CURRENTS MAY OCCUR. APPROPRIATE SAFETY MEASURES TO BE CARRIED OUT.

CONTRACTOR TO CONTACT RELEVANT SERVICE AUTHORITIES, ESTABLISH REQUIRED GUIDELINES AND COMPLY WITH AUTHORITIES' REQUIREMENTS.



DRAWING SCHEDULE

DRAWING	DESCRIPTION	SHEET No.	REVISION
CR100	FACE SHEET	1	2
CR200	FACE PLAN	2	2
CR201	SERVICE PLAN	3	2
CR300	ROAD LONG SECTIONS - SHEET 1	4	1
CR301	ROAD LONG SECTIONS - SHEET 2	5	1
CR400	ROAD CROSS SECTIONS - SHEET 1	6	1
CR401	ROAD CROSS SECTIONS - SHEET 2	7	1
CR402	ROAD CROSS SECTIONS - SHEET 3	8	1
CR403	ROAD CROSS SECTIONS - SHEET 4	9	1
CR500	INTERSECTION DETAILS - SHEET 1	10	2
CR501	INTERSECTION DETAILS - SHEET 2	11	1
CR600	DRAINAGE LONG SECTIONS	12	1
CR601	DRAINAGE LONG SECTIONS & PIT SCHEDULE	13	2
CR700	PAVEMENT AND TYPICAL DETAILS	14	1
CR800	SIGNAGE AND LINEMARKING	15	1

LEGEND

DESCRIPTION	EXISTING	PROPOSED
WATER MAIN, VALVE AND HYDRANT	DW	DW
WATER RECYCLED	NDW	NDW
UNDERGROUND ELECTRICITY	E	E
OVERHEAD ELECTRICITY & POLE	OE	OE
TELECOMMUNICATIONS & SERVICE PIT	T	T
OPTIC FIBRE	OF	OF
OVERHEAD TELECOMMUNICATIONS	OT	OT
GAS MAIN	G	G
BRANCH SEWER & MAINTENANCE STRUCTURE	S	S
SEWER & MAINTENANCE STRUCTURE	S	S
CENTRAL INVERT	S	S
COUNCIL STORMWATER DRAIN AND PIT	S	S
STORM WATER DRAINAGE PROPERTY INLETS	S	S
COUNCIL STORM WATER PITS	S	S
HOUSE DRAIN	H	H
AG DRAIN AND FLUSHER	AG	AG
STORM WATER DRAINAGE PIT NUMBER	Ex. 4.7	1
GAS & WATER CONDUITS	GW	GW
CONCRETE VEHICLE CROSSING	CV	CV
RIDGE / CHANGE OF GRADE LINE	169.00	169.00
SURFACE CONTOUR MINOR	168.90	168.90
SURFACE CONTOUR MAJOR	168.90	168.90
SURFACE LEVEL	E123.45	F124.68
BATTER LEVEL (TOP / TOE)	T124.80	T124.80
EARTHWORKS GRADE	1 in 150	1 in 150
SIGN AND POST	S	S
LIGHT & POLE (BY OTHERS)	L	L
STREET SIGN	S	S
PERMANENT SURVEY MARK	S	S
TEMPORARY BENCH MARK	S	S
BOLLARD	S	S
ROAD CHAINAGES	CH116.57 (L/R)T/P	CH116.57 (L/R)T/P
LOT CHAINAGES	CH20.06	CH20.06
SETOUT POINT	S	S
LIMIT OF WORKS	S	S
BATTER	S	S
EXCAVATION GREATER THAN 0.20m	S	S
FILLING GREATER THAN 0.20m	S	S
FENCE - TREE PROTECTION	S	S
FENCE - VEHICLE EXCLUSION	S	S
FENCES	S	S
GUARD RAIL	S	S
TREE (& SURVEYED CANOPY) TO BE RETAINED	S	S
TREE TO BE PROTECTED	S	S
TREE TO BE REMOVED	S	S
VEGETATION LINE	S	S
FOOTPATH	S	S
HEAVY DUTY FOOTPATH	S	S
TACTILE GROUND SURFACE INDICATOR	S	S
KERB TRANSITION	B2	SM2

file name: 303445CR100.dwg, layout name: CR100, plotted by: Sander Ashby, file location: G:\303445\CR100\303445.dwg, PLOT DATE: 27/03/2021, PH: Sheet 1 of 15 Sheets

Rev	Amendments	Approved	Date
2	AS CONSTRUCTED	M.H.	27/01/22
1	DRAINAGE, SEWER CONNECTIONS & GW CONNECTIONS AMENDED	M.H.	20/09/21
0	ISSUED FOR CONSTRUCTION	M.H.	07/04/21
C	ISSUED FOR TENDER	M.H.	31/03/21
B	AMENDED AS PER COUNCIL COMMENTS	M.H.	22/03/21
A	ISSUED FOR APPROVAL	M.H.	05/03/21

System Certified

 © Spiire Australia Pty Ltd All Rights Reserved

This document is produced by Spiire Australia Pty Ltd solely for the benefit of and use by the client in accordance with the terms of the retainer. Spiire Australia Pty Ltd does not and shall not assume any responsibility or liability whatsoever to any third party arising out of any use or reliance by third party on the content of this document.

414 LA TROBE STREET PO BOX 16084 MELBOURNE
 VICTORIA 8007 AUSTRALIA T 61 3 9993 7888
 spiire.com.au ABN 55 050 029 635

Designed
P. CLIFTON

 Authorised
M. HOLMES

 Checked
J. KOEHLER

 Date
05/03/21

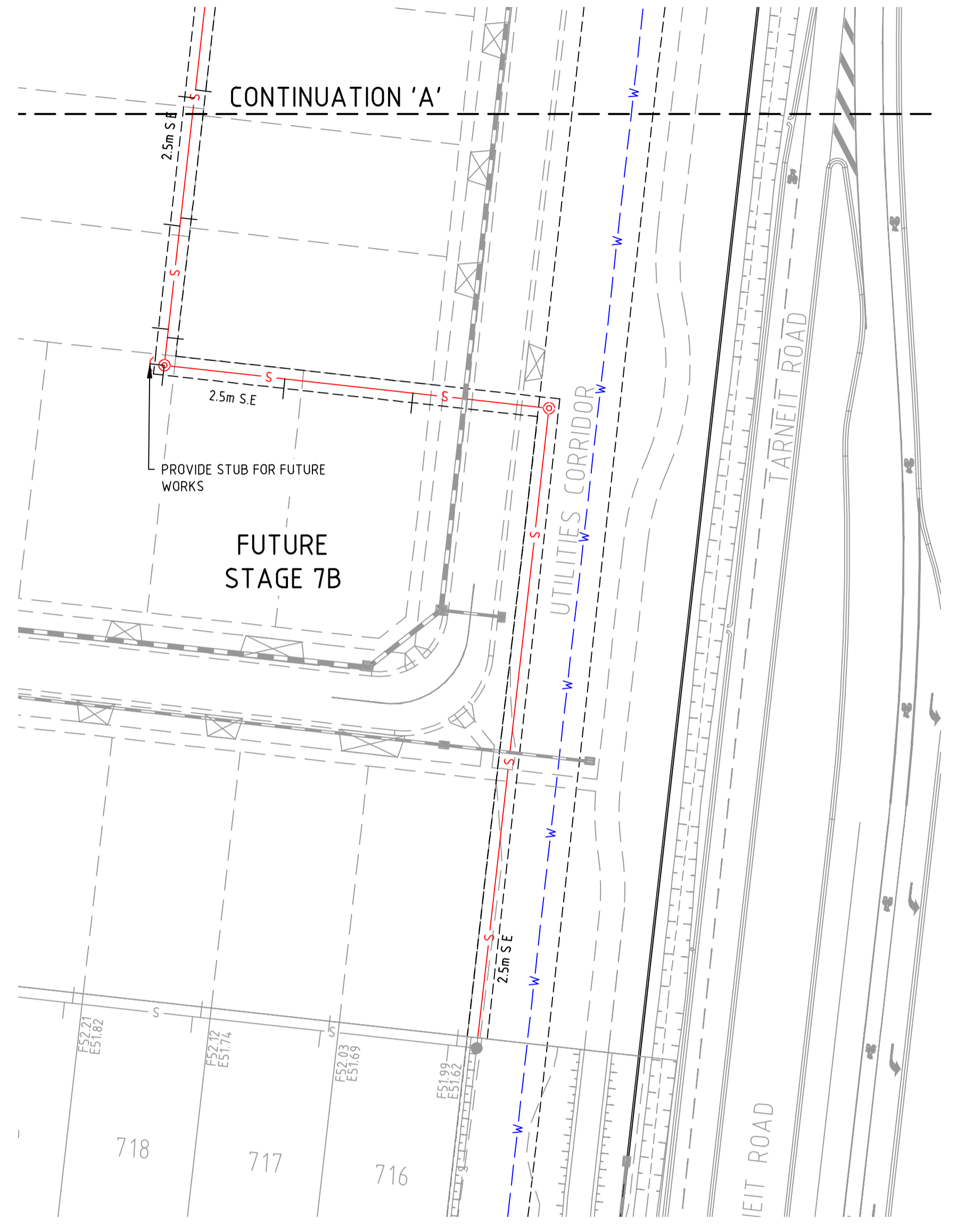
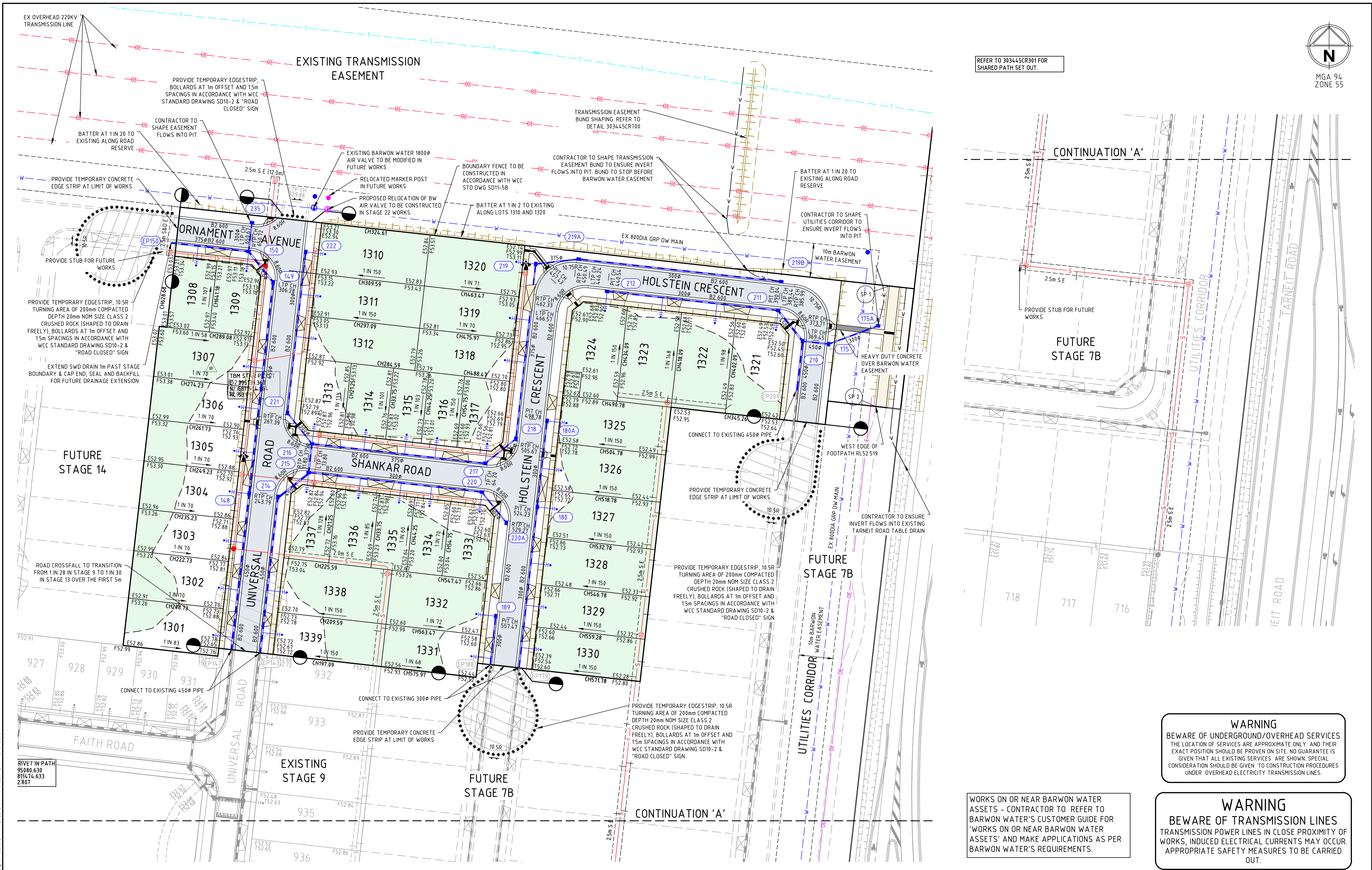
**NEWHAVEN
STAGE 13
ROAD AND DRAINAGE
FACE SHEET**
 WYNDHAM CITY COUNCIL
 PEET NO. 1895 PTY LTD

AS CONSTRUCTED

Drg No **303445CR100**

Rev **2**

REFER TO 303445CR301 FOR SHARED PATH SET OUT.



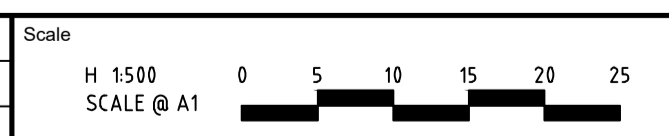
WARNING
BEWARE OF UNDERGROUND/OVERHEAD SERVICES
THE LOCATION OF SERVICES ARE APPROXIMATE ONLY AND THEIR EXACT POSITION SHOULD BE PROVEN ON SITE. NO GUARANTEE IS GIVEN THAT ALL EXISTING SERVICES ARE SHOWN. SPECIAL CONSIDERATION SHOULD BE GIVEN TO CONSTRUCTION PROCEDURES UNDER OVERHEAD ELECTRICITY TRANSMISSION LINES.

WORKS ON OR NEAR BARWON WATER ASSETS - CONTRACTOR TO REFER TO BARWON WATER'S CUSTOMER GUIDE FOR 'WORKS ON OR NEAR BARWON WATER ASSETS' AND MAKE APPLICATIONS AS PER BARWON WATER'S REQUIREMENTS.

WARNING
BEWARE OF TRANSMISSION LINES
TRANSMISSION POWER LINES IN CLOSE PROXIMITY OF WORKS, INDUCED ELECTRICAL CURRENTS MAY OCCUR. APPROPRIATE SAFETY MEASURES TO BE CARRIED OUT.

file name: 303445CR200.dwg, layout name: CD200, plotted by: Sandra Ashby, file location: G:\303445\CD\303445.dwg, plot date: 27/03/2022 2:04 PM, Sheet: 2 of 15 Sheets

Rev	Amendments	Approved	Date
2	AS CONSTRUCTED	M.H.	27/01/22
1	DRAINAGE & SEWER CONNECTIONS AMENDED	M.H.	20/09/21
0	ISSUED FOR CONSTRUCTION	M.H.	07/04/21
C	ISSUED FOR TENDER	M.H.	31/03/21
B	PIT 219B & TRANSMISSION EASEMENT BUND ADDED	M.H.	22/03/21
A	ISSUED FOR APPROVAL	M.H.	05/03/21



System Certified

 © Spiire Australia Pty Ltd All Rights Reserved

This document is produced by Spiire Australia Pty Ltd solely for the benefit of and use by the client in accordance with the terms of the retainer. Spiire Australia Pty Ltd does not and shall not assume any responsibility or liability whatsoever to any third party arising out of any use or reliance by third party on the content of this document.

spiire

14 LA TROBE STREET PO BOX 16084 MELBOURNE
VICTORIA 8007 AUSTRALIA T 61 3 9993 7888
spiire.com.au ABN 55 050 029 635

PEET

Designed
P. CLIFTON
Authorised
M. HOLMES

Checked
J. KOEHLER
Date
05/03/21

**NEWHAVEN
STAGE 13
ROAD AND DRAINAGE
FACE PLAN**
WYNDHAM CITY COUNCIL
PEET NO. 1895 PTY LTD

AS CONSTRUCTED Drg No **303445CR200** Rev **2**