

NEWHAVEN ESTATE STAGE 16 PEET NO.1895 PTY LTD

GENERAL NOTES:

SURVEY

- ALL LEVELS ARE TO AUSTRALIAN HEIGHT DATUM AND ALL COORDINATES ARE TO MAP GRID OF AUSTRALIA (MGA) 94, ZONE 55.
- ALL EXISTING SURFACE LEVELS SHOWN ON THE ENGINEERING DRAWINGS HAVE BEEN INTERPOLATED FROM A DIGITAL TERRAIN MODEL. THESE LEVELS HAVE BEEN USED AS THE BASIS FOR ALL ENGINEERING DESIGN AND DETERMINATION OF QUANTITIES AND ARE ACCURATE TO WITHIN ±0.05m.
- ALL WORKS TO BE CARRIED OUT IN ACCORDANCE WITH PEET'S MODIFIED AS4000-1997-AMENDED FROM GENERAL CONDITIONS OF CONTRACT FOR USE IN VICTORIA, THE ROAD & DRAINAGE SPECIFICATION, APPROVED MUNICIPALITY SPECIFICATIONS AND STANDARD DRAWINGS AND TO THE SATISFACTION OF THE SUPERINTENDENT AND THE MUNICIPAL ENGINEER OR HIS REPRESENTATIVE.
- ROAD CHAINAGES REFER TO ROAD CENTRELINES. CHAINAGES FOR INTERSECTIONS AND CUL-DE-SACS REFER TO THE LIP OF KERB
- THE LOCATION OF EXISTING SERVICES SHOULD BE DETERMINED BY THE CONTRACTOR PRIOR TO COMMENCING ANY EXCAVATION BY CONTACTING ALL LOCAL SERVICE AUTHORITIES. ANY EXISTING SERVICES SHOWN ON THESE DRAWINGS ARE OFFERED AS A GUIDE ONLY AND ARE NOT GUARANTEED AS CORRECT.
- WHERE REQUIRED ANY BUILDINGS, TRENCHES, FENCES AND OTHER STRUCTURES ON SITE ARE TO BE REMOVED AS DIRECTED BY THE ENGINEER. THE COST OF REMOVAL IS TO BE INCLUDED IN THE OVERALL EARTHWORKS FIGURE UNLESS A SPECIFIC ITEM FOR REMOVAL IS DENOTED IN THE SCHEDULE.
- ALL EXCAVATED ROCK AND SURPLUS SPOIL TO BE REMOVED AND DISPOSED OFF SITE UNLESS NOTED OTHERWISE.
- ALL FILLING ON LOTS AND WITHIN ROAD RESERVES GREATER THAN 200mm IS TO BE UNDERTAKEN USING LEVEL 1 SUPERVISION AND BE COMPLETED IN ACCORDANCE WITH AS 3798-2007. FILL AREAS ARE TO BE STRIPPED OF TOPSOIL, FILLED AND REPLACED WITH TOPSOIL (WHERE REQUIRED) TO OBTAIN THE FINAL LEVELS SHOWN ON THE DRAWINGS.
- FILLING MATERIAL IS TO BE IN ACCORDANCE WITH THE SPECIFICATION, AS 3798-2007 & TO THE SATISFACTION OF COUNCIL AND THE SUPERINTENDENT.
- ALL BATTERS SHALL BE 1 IN 6, UNLESS OTHERWISE SHOWN.
- NO FILL OR STOCKPILING OF MATERIAL IS TO BE PLACED ON ANY RESERVE FOR PUBLIC OPEN SPACE UNLESS OTHERWISE DIRECTED OR APPROVED BY THE SUPERINTENDENT.
- TBM'S TO BE RE-ESTABLISHED BY THE LICENSED SURVEYOR IF FOUND TO BE MISSING AT THE COMMENCEMENT OF CONSTRUCTION. THE CONTRACTOR WILL BE RESPONSIBLE FOR CARE AND MAINTENANCE OF T.B.M.'S THEREAFTER.
- AT LEAST 3 DAYS PRIOR TO COMMENCING WORK ON EXCAVATIONS IN EXCESS OF 150m DEEP, A NOTIFICATION FORM MUST BE SENT TO WORKSAFE. THE CONTRACTOR IS TO COMPLY WITH WORKSAFE, THE MINES (TRENCHES) REGULATION 1982, THE MINES ACT 1958 AND OCCUPATIONAL HEALTH AND SAFETY ACT 1985, 2004.
- ALL SERVICE TRENCHES UNDER DRIVEWAYS, FOOTPATHS AND PARKING BAYS TO BE BACKFILLED WITH CLASS 2 CRUSHED ROCK. SERVICE TRENCHES LESS THAN 750mm BEHIND KERB AND CHANNEL OR PAVED TRAFFIC AREAS ARE ALSO TO BE BACKFILLED WITH COMPACTED CLASS 2 CRUSHED ROCK.
- WHERE REQUIRED, ALL EXISTING DAMS, DEPRESSIONS AND DRAINS ARE TO BE BREACHED, DRAINED, DESLUGGED AND SHALL BE EXCAVATED TO A CLEAN FIRM BASE. THE SURFACE SHALL BE INSPECTED, APPROVED AND LEVELED BY THE ENGINEER PRIOR TO COMMENCEMENT OF FILLING. THE FILL SHALL BE APPROVED SELECTED ON SITE MATERIAL OR APPROVED IMPORTED MATERIAL. THE FILL SHALL BE PLACED UNDER CONTROLLED MOISTURE CONDITIONS IN ACCORDANCE WITH THE SPECIFICATION
- NO BLASTING TO BE CARRIED OUT WITHIN THE MUNICIPALITY WITHOUT OBTAINING COUNCIL'S PERMISSION.

EARTHWORKS

- WHERE PAVED DEPTHS MAY BE MODIFIED AS DIRECTED BY THE SUPERINTENDENT. PAVEMENT TO BE BOXED OUT TO MINIMUM DEPTH DENOTED. INSPECTED AND IF SUBGRADE IS IN QUESTION, FURTHER TESTING CARRIED OUT TO DETERMINE FINAL PAVEMENT DEPTH.
- WHERE PAVEMENT IS CONSTRUCTED ON FILLING, FILL MATERIAL IS TO BE APPROVED BY THE SUPERINTENDENT AND COUNCIL. FILLING TO BE CONSTRUCTED IN LAYERS 150mm THICK WITH COMPACTION ACHIEVING 95% AUSTRALIAN STANDARD DENSITY.
- WHEN PAVEMENT EXCAVATION IS IN ROCK ALL LOOSE MATERIAL (INCLUDING ROCKS AND CLAY) MUST BE REMOVED. THE SUB-GRADE MUST THEN BE REGULATED WITH COUNCIL APPROVED MATERIAL.
- LINE MARKING AND SIGNAGE TO BE INSTALLED IN ACCORDANCE WITH AS 1742 SERIES UNLESS NOTED OTHERWISE. STREET SIGNS ARE TO BE INSTALLED IN ACCORDANCE WITH COUNCIL STANDARDS.
- CONTRACTOR TO PROVIDE AN ENVIRONMENTAL MANAGEMENT PLAN INCLUDING SILT AND SEDIMENT RUNOFF PROTECTION ETC. PRIOR TO THE COMMENCEMENT OF WORKS.
- ALL TREES AND SHRUBS ARE TO BE RETAINED UNLESS OTHERWISE SHOWN. IF ROAD AND DRAINAGE CONSTRUCTION NECESSITATES THEIR REMOVAL, WRITTEN PERMISSION MUST BE OBTAINED FROM THE SUPERINTENDENT.
- TREES NOT SPECIFIED FOR REMOVAL ARE TO BE PROTECTED WITH APPROPRIATE EXCLUSION FENCING PRIOR TO COMMENCEMENT OF ANY WORKS.

ENVIRONMENTAL

- CONTRACTOR TO PROVIDE AN ENVIRONMENTAL MANAGEMENT PLAN INCLUDING SILT AND SEDIMENT RUNOFF PROTECTION ETC. PRIOR TO THE COMMENCEMENT OF WORKS.
- ALL TREES AND SHRUBS ARE TO BE RETAINED UNLESS OTHERWISE SHOWN. IF ROAD AND DRAINAGE CONSTRUCTION NECESSITATES THEIR REMOVAL, WRITTEN PERMISSION MUST BE OBTAINED FROM THE SUPERINTENDENT.
- TREES NOT SPECIFIED FOR REMOVAL ARE TO BE PROTECTED WITH APPROPRIATE EXCLUSION FENCING PRIOR TO COMMENCEMENT OF ANY WORKS.

SERVICES

- GAS AND WATER CONDUITS ARE TO BE 050mm CLASS 12 P.V.C. - SINGLE SERVICE 0100mm CLASS 12 P.V.C. - DUAL SERVICE (DRINKING AND NON DRINKING WATER) WITH THE FOLLOWING MINIMUM COVER TO FINISHED SURFACE LEVELS:
ROAD PAVEMENT - 0.80m
VERGE, FOOTPATHS - 0.45m
- ALL SERVICE CONDUIT TRENCHES UNDER ROAD PAVEMENTS TO BE BACKFILLED IN ACCORDANCE WITH RELEVANT MUNICIPALITY OR ROAD AUTHORITY SPECIFICATION.
- WATER TAPPINGS TO BE LOCATED IN CENTRE OF ALLOTMENTS UNLESS OTHERWISE SHOWN.
- TELSTRA ARE TO BE NOTIFIED 7 DAYS PRIOR TO PLACEMENT OF CONCRETE WORKS.
- AG/SUBSOIL DRAIN TO BE LAID BEHIND KERB WHERE REQUIRED IN ACCORDANCE WITH THE COUNCIL STANDARD DRAWINGS AND CONNECTED TO UNDERGROUND DRAINAGE.
- ALL STORMWATER DRAINS ARE TO BE CLASS '2' R.C. PIPES UNLESS OTHERWISE SHOWN. ALL R.C. JOINTS ARE TO BE RUBBER RING JOINTED (R.R.J.).

- CENTRELINES OF ALL EASEMENT DRAINS ARE OFFSET 1.0m OR 2.2m (WHERE OUTSIDE OF SEWER) FROM THE PROPERTY LINE UNLESS SHOWN OTHERWISE.
- WHERE CURVED PIPES ARE SHOWN ON THE FACE PLANS THEY ARE TO BE LAID PARALLEL TO THE BACK OF KERB, EXCEPT WHERE A RADIUS HAS BEEN SPECIFICALLY NOMINATED. CURVED PIPES ARE TO BE APPROVED BY COUNCIL AND IN ACCORDANCE WITH THE MANUFACTURERS SPECIFICATIONS.
- HOUSE DRAIN OFFSET AT 6.0m FROM SIDE LOT BOUNDARY UNLESS NOTED OTHERWISE.

PAVEMENT

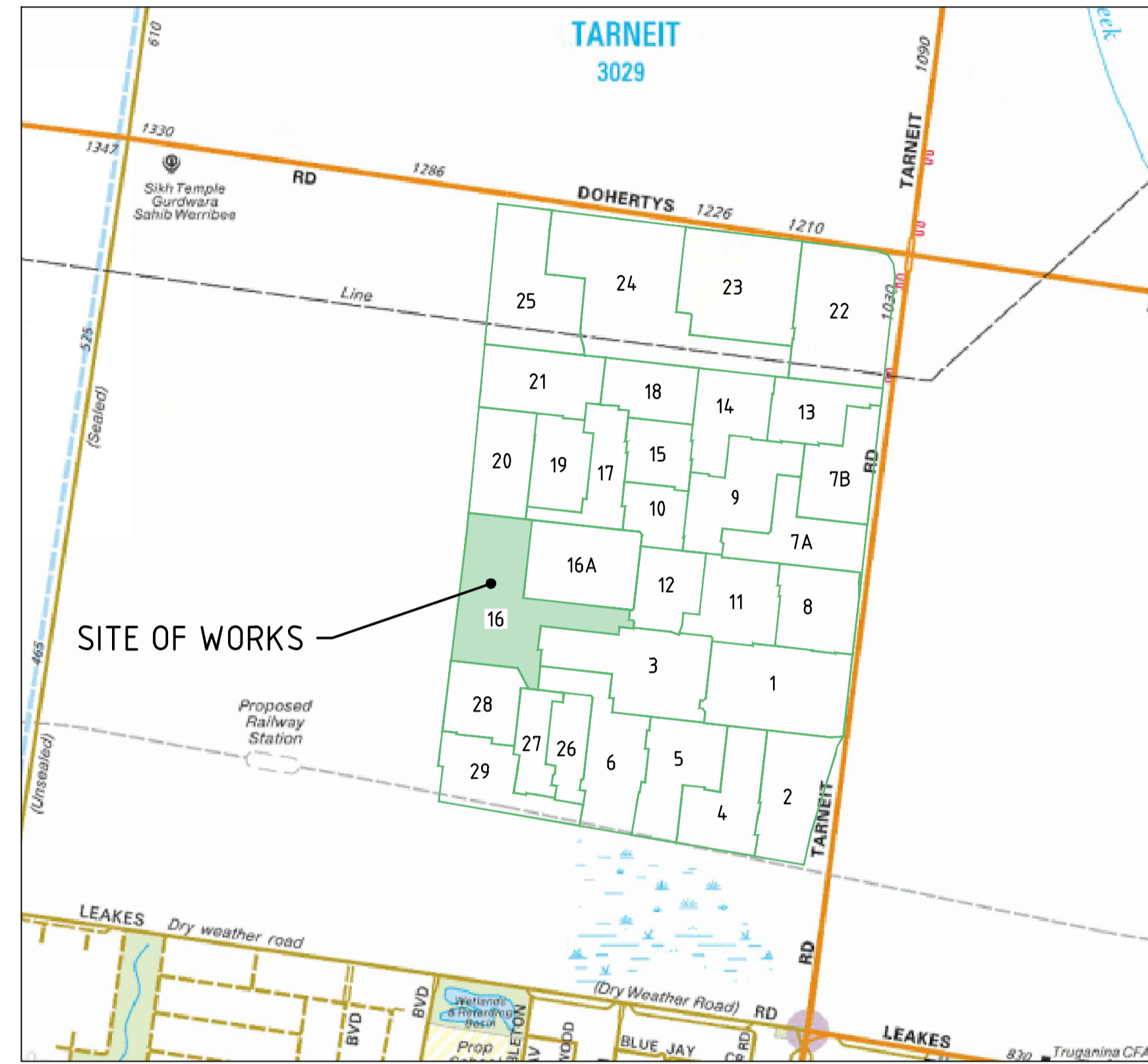
- WHERE PAVEMENT IS CONSTRUCTED ON FILLING, FILL MATERIAL IS TO BE APPROVED BY THE SUPERINTENDENT AND COUNCIL. FILLING TO BE CONSTRUCTED IN LAYERS 150mm THICK WITH COMPACTION ACHIEVING 95% AUSTRALIAN STANDARD DENSITY.
- WHEN PAVEMENT EXCAVATION IS IN ROCK ALL LOOSE MATERIAL (INCLUDING ROCKS AND CLAY) MUST BE REMOVED. THE SUB-GRADE MUST THEN BE REGULATED WITH COUNCIL APPROVED MATERIAL.

SIGNAGE AND LINEMARKING

- LINE MARKING AND SIGNAGE TO BE INSTALLED IN ACCORDANCE WITH AS 1742 SERIES UNLESS NOTED OTHERWISE. STREET SIGNS ARE TO BE INSTALLED IN ACCORDANCE WITH COUNCIL STANDARDS.
- CONTRACTOR TO PROVIDE AN ENVIRONMENTAL MANAGEMENT PLAN INCLUDING SILT AND SEDIMENT RUNOFF PROTECTION ETC. PRIOR TO THE COMMENCEMENT OF WORKS.
- ALL TREES AND SHRUBS ARE TO BE RETAINED UNLESS OTHERWISE SHOWN. IF ROAD AND DRAINAGE CONSTRUCTION NECESSITATES THEIR REMOVAL, WRITTEN PERMISSION MUST BE OBTAINED FROM THE SUPERINTENDENT.
- TREES NOT SPECIFIED FOR REMOVAL ARE TO BE PROTECTED WITH APPROPRIATE EXCLUSION FENCING PRIOR TO COMMENCEMENT OF ANY WORKS.

ENVIRONMENTAL

- CONTRACTOR TO PROVIDE AN ENVIRONMENTAL MANAGEMENT PLAN INCLUDING SILT AND SEDIMENT RUNOFF PROTECTION ETC. PRIOR TO THE COMMENCEMENT OF WORKS.
- ALL TREES AND SHRUBS ARE TO BE RETAINED UNLESS OTHERWISE SHOWN. IF ROAD AND DRAINAGE CONSTRUCTION NECESSITATES THEIR REMOVAL, WRITTEN PERMISSION MUST BE OBTAINED FROM THE SUPERINTENDENT.
- TREES NOT SPECIFIED FOR REMOVAL ARE TO BE PROTECTED WITH APPROPRIATE EXCLUSION FENCING PRIOR TO COMMENCEMENT OF ANY WORKS.



LOCALITY PLAN
NOT TO SCALE

DRAWING SCHEDULE

DRAWING	DESCRIPTION	SHEET No.	REVISION
CR100	GENERAL NOTES - FACE SHEET	1	1
CR200	ROAD LAYOUT PLANS - LOCALITY PLAN	2	1
CR201	ROAD LAYOUT PLANS - FACE PLAN	3	1
CR202	ROAD LAYOUT PLANS - SERVICES PLAN	4	1
CR300	ROAD LONG SECTIONS - VOYAGER BOULEVARD & JEEVA AVENUE (SHEET 1 OF 2)	5	1
CR301	ROAD LONG SECTIONS - TRAJECTORY DRIVE, ROAD B & ROAD C (SHEET 2 OF 2)	6	1
CR400	ROAD CROSS SECTIONS - VOYAGER BOULEVARD (SHEET 1 OF 4)	7	1
CR401	ROAD CROSS SECTIONS - VOYAGER BOULEVARD (SHEET 2 OF 4)	8	1
CR402	ROAD CROSS SECTIONS - VOYAGER BOULEVARD & JEEVA AVENUE (SHEET 3 OF 4)	9	1
CR403	ROAD CROSS SECTIONS - JEEVA AVENUE, TRAJECTORY DRIVE, ROAD B & ROAD C (SHEET 4 OF 4)	10	1
CR500	INTERSECTION DETAILS - (SHEET 1 OF 2)	11	1
CR501	INTERSECTION DETAILS - (SHEET 2 OF 2)	12	1
CR600	DRAINAGE LONG SECTIONS - (SHEET 1 OF 2)	13	1
CR601	DRAINAGE LONG SECTIONS - (SHEET 2 OF 2)	14	1
CR700	PAVEMENT AND TYPICAL DETAILS	15	1
CR800	SIGNAGE AND LINEMARKING	16	1



WARNING
BEWARE OF UNDERGROUND/OVERHEAD SERVICES
THE LOCATION OF SERVICES ARE APPROXIMATE ONLY AND THEIR EXACT POSITION SHOULD BE PROVEN ON SITE. NO GUARANTEE IS GIVEN THAT ALL EXISTING SERVICES ARE SHOWN. SPECIAL CONSIDERATION SHOULD BE GIVEN TO CONSTRUCTION PROCEDURES UNDER OVERHEAD ELECTRICITY TRANSMISSION LINES.

LEGEND

DESCRIPTION	EXISTING	PROPOSED
WATER MAIN, VALVE AND HYDRANT	DW	DW
WATER RECYCLED	NDW	NDW
UNDERGROUND ELECTRICITY	E	E
OVERHEAD ELECTRICITY & POLE	OE	OE
TELECOMMUNICATIONS & SERVICE PIT	T	T
OPTIC FIBRE	OF	OF
OVERHEAD TELECOMMUNICATIONS	OT	OT
GAS MAIN	G	G
BRANCH SEWER & MAINTENANCE STRUCTURE	S	S
SEWER & MAINTENANCE STRUCTURE	S	S
SEWER RISING MAIN	SRM	SRM
CENTRAL INVERT	>	>
COUNCIL STORMWATER DRAIN AND PIT	—	—
STORM WATER DRAINAGE PROPERTY INLETS	—	—
COUNCIL STORM WATER PITS	—	—
HOUSE DRAIN	H	H
AG DRAIN AND FLUSHER	AG	AG
MWC STORM WATER DRAIN & PIT	—	—
MWC STORM WATER PITS	—	—
STORM WATER DRAINAGE PIT NUMBER	Ex 47	1
GAS & WATER CONDUITS	GW	GW
CONCRETE VEHICLE CROSSING	—	—
RIDGE / CHANGE OF GRADE LINE	—	—
SURFACE CONTOUR MINOR	169.00	169.00
SURFACE CONTOUR MAJOR	168.90	168.90
SURFACE LEVEL	E123.45	F124.68
BATTER LEVEL (TOP / TOE)	T124.80	T124.80
RETAINING WALL LEVEL (TOP/BOTTOM)	TW112.76	TW128.50 BW126.74
EARTHWORKS GRADE	—	1 in 150
SIGN AND POST	—	—
LIGHT & POLE (BY OTHERS)	—	—
STREET SIGN	—	—
PERMANENT SURVEY MARK	—	—
TEMPORARY BENCH MARK	—	—
BOLLARD	—	—
ROAD CHAINAGES	CH116.57 (L/R)T/P CH116.57 CH20.06	CH116.57 (L/R)T/P CH116.57 CH20.06
LOT CHAINAGES	—	—
SETOUT POINT	—	2
LIMIT OF WORKS	—	—
BATTER	—	—
EXCAVATION GREATER THAN 0.20m	—	—
FILLING GREATER THAN 0.20m	—	—
ROCK BEACHING	—	—
RETAINING WALL	—	—
FENCE - TREE PROTECTION	—	—
FENCE - VEHICLE EXCLUSION	—	—
FENCES	—	—
GUARD RAIL	—	—
TREE (& SURVEYED CANOPY) TO BE RETAINED	—	—
TREE TO BE PROTECTED	—	—
TREE TO BE REMOVED	—	—
VEGETATION LINE	—	—
FOOTPATH	—	—
TACTILE GROUND SURFACE INDICATOR	—	—
KERB TRANSITION	B2	SM2

file name: 304669CR100.dwg, layout name: CR100, plotted by: George Ysacovich, file location: G:\304669\304669\304669\CAD\plot\dele 20\05\2022\845 AM Sheet_1 of 16 Sheets

Rev	Amendments	Approved	Date
1	AS CONSTRUCTED	M.H	20/05/22
0	ISSUED FOR CONSTRUCTION	M.H.	19/08/21
C	SHEETS CR200, 201, 202, 400, 500, 600, 700 & 800 AMENDED	M.H.	28/06/21
B	SHEETS CR201, 202 & 700 AMENDED	M.H.	08/06/21
A	ISSUED FOR APPROVAL	M.H.	04/05/21

ISO 9001
ISO 45001
ISO 14001
System Certified

© Spiire Australia Pty Ltd All Rights Reserved
This document is produced by Spiire Australia Pty Ltd solely for the benefit of and use by the client in accordance with the terms of the retainer. Spiire Australia Pty Ltd does not and shall not assume any responsibility or liability whatsoever to any third party arising out of any use or reliance by third party on the content of this document.

spiire

414 LA TROBE STREET PO BOX 16084 MELBOURNE
VICTORIA 8007 AUSTRALIA T 61 3 9993 7888
spiire.com.au ABN 55 050 029 635

PEET

Designed
B. BASIAS
Authorised
M. HOLMES

Checked
J. KOEHLER
Date
04/05/21

NEWHAVEN ESTATE
STAGE 16
ROAD AND DRAINAGE
GENERAL NOTES - FACE SHEET
WYNDHAM CITY COUNCIL
PEET NO.1895 PTY LTD

AS CONSTRUCTED Drg No **304669CR100** Rev **1**

NOTES:
HOUSE DRAIN INSPECTION OPENINGS TO BE LOCATED BEHIND 600B3 KERB AND EXTEND TO 200mm BELOW F.S.L FOR LOTS 1605-1607, 1610-1613, 1615-1617, 1619 & FUTURE LOTS 2825 & 2826. REFER TO 304669CR100 FOR PROPERTY CONNECTION TO UNDERGROUND DRAIN DETAIL.

EXISTING DAM DRAINED AND REMOVED AS PART OF THE EXISTING STAGE 12 CONSTRUCTION WORKS

EXISTING SCHOOL SITE
(FUTURE PRIMARY SCHOOL)
(3.502ha)

FUTURE DEVELOPMENT BY OTHERS

PROPOSED LOCAL SPORTS RESERVE
(3.576ha)

SAWCUT & REMOVE SIGNS, CONCRETE EDGE STRIP AND AG DRAIN. MATCH NEATLY IN WITH EXISTING INFRASTRUCTURE

SAWCUT & REMOVE TEMPORARY TURNAROUND PAVEMENT, SIGNS, CONCRETE EDGE STRIP AND AG DRAIN. MATCH NEATLY IN WITH EXISTING INFRASTRUCTURE

BLANK OFF PIPE WITH CONCRETE OR MARINE GRADE TIMBER

PROVIDE 2m WIDE BERM BATTER TO EXISTING SURFACE. REFER TO 304669CR403

PROVIDE TEMPORARY 200mm WIDE x 300mm DEEP CONCRETE EDGE STRIP & AG DRAIN

PROVIDE SANDBAGS AROUND OUTFALL AND STAR PICKET & 3-WIRE FENCE.

GRADE TEMPORARY CHANNEL FROM IL4.8.599 TOWARDS EX.900° STUB AT EX PIT A8 AT 1:IN 190. REFER TO 304669CR601 FOR SETOUT DETAILS.

FUTURE 750φ DRAIN

PROVIDE TEMPORARY 200mm WIDE x 300mm DEEP CONCRETE EDGE STRIP & AG DRAIN

PROVIDE 2m WIDE BERM BATTER TO EXISTING SURFACE. REFER TO 304669CR402

PROVIDE 7.40m x 7.20m ELECTRICAL KIOSK RESERVE

EXISTING OPEN SWALE DRAIN TO BE EXCAVATED AND FILLED TO LEVEL 1 FILL IN ACCORDANCE WITH STANDARD NOTES

BREAK INTO EXISTING PIT AND CONNECT 300φ

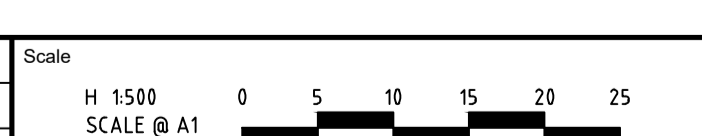
REMOVE EXISTING PIT & CONNECT TO EXISTING 300φ SW DRAIN

SAWCUT & REMOVE TEMPORARY TURNAROUND PAVEMENT, SIGNS, CONCRETE EDGE STRIP AND AG DRAIN. MATCH NEATLY IN WITH EXISTING INFRASTRUCTURE

BREAK INTO EXISTING PIT AND CONNECT 300φ

WARNING
BEWARE OF UNDERGROUND/OVERHEAD SERVICES
THE LOCATION OF SERVICES ARE APPROXIMATE ONLY AND THEIR EXACT POSITION SHOULD BE PROVEN ON SITE. NO GUARANTEE IS GIVEN THAT ALL EXISTING SERVICES ARE SHOWN. SPECIAL CONSIDERATION SHOULD BE GIVEN TO CONSTRUCTION PROCEDURES UNDER OVERHEAD ELECTRICITY TRANSMISSION LINES.

Rev	Amendments	Approved	Date
1	AS CONSTRUCTED	M.H.	20/05/22
0	ISSUED FOR CONSTRUCTION	M.H.	19/08/21
C	PARKING BAY ADDED, LOT 1606 DRIVEWAY RELOCATED & NOTES UPDATED	M.H.	28/06/21
B	PARKING BAY HATCH UPDATED, NOTES ADDED AND UPDATED	M.H.	08/06/21
A	ISSUED FOR APPROVAL	M.H.	04/05/21



System Certified

© Spiire Australia Pty Ltd All Rights Reserved
This document is produced by Spiire Australia Pty Ltd solely for the benefit of and use by the client in accordance with the terms of the reseller. Spiire Australia Pty Ltd does not and shall not assume any responsibility or liability whatsoever to any third party arising out of any use or reliance by third party on the content of this document.

spiire

414 LA TROBE STREET PO BOX 16084 MELBOURNE
VICTORIA 8007 AUSTRALIA T 61 3 9993 7888
spiire.com.au ABN 55 050 029 635

PEET

Designed
B. BASIAS

Checked
J. KOEHLER

Authorised
M. HOLMES

Date
04/05/21

**NEWHAVEN ESTATE
STAGE 16
ROAD AND DRAINAGE
ROAD LAYOUT PLANS - FACE PLAN
WYNDHAM CITY COUNCIL
PEET NO.1895 PTY LTD**

AS CONSTRUCTED

Drg No
304669CR201

Rev
1

file name: 304669CR200.dwg; layout name: CR201; plotted by: Gertie Yip; plot date: 20/05/2022 8:44 AM; sheet: 3 of 16; sheets: 304669CR200.dwg; location: \\spiiremedia\data\304669\WYNDHAM\CAD\Plot date: 20/05/2022 8:44 AM; sheet: 3 of 16; sheets: 304669CR200.dwg