

NEWHAVEN ESTATE STAGE 9 PEET NO. 1895 PTY LTD

GENERAL NOTES:

SURVEY

- ALL LEVELS ARE TO AUSTRALIAN HEIGHT DATUM AND ALL COORDINATES ARE TO MAP GRID OF AUSTRALIA (MGA) 94, ZONE 55.
- ALL EXISTING SURFACE LEVELS SHOWN ON THE ENGINEERING DRAWINGS HAVE BEEN INTERPOLATED FROM A DIGITAL TERRAIN MODEL. THESE LEVELS HAVE BEEN USED AS THE BASIS FOR ALL ENGINEERING DESIGN AND DETERMINATION OF QUANTITIES AND ARE ACCURATE TO WITHIN ±0.05m.
- ALL WORKS TO BE CARRIED OUT IN ACCORDANCE WITH PEET'S MODIFIED AS4000-1997 - AMENDED FROM CONDITIONS OF CONTRACT, THE ROAD & DRAINAGE SPECIFICATION, APPROVED MUNICIPALITY SPECIFICATIONS AND STANDARD DRAWINGS AND TO THE SATISFACTION OF THE SUPERINTENDENT AND THE MUNICIPAL ENGINEER OR HIS REPRESENTATIVE.
- ROAD CHAINAGES REFER TO ROAD CENTRELINES. CHAINAGES FOR INTERSECTIONS AND CUL-DE-SACS REFER TO THE LIP OF KERB

EARTHWORKS

- THE LOCATION OF EXISTING SERVICES SHOULD BE DETERMINED BY THE CONTRACTOR PRIOR TO COMMENCING ANY EXCAVATION BY CONTACTING ALL LOCAL SERVICE AUTHORITIES. ANY EXISTING SERVICES SHOWN ON THESE DRAWINGS ARE OFFERED AS A GUIDE ONLY AND ARE NOT GUARANTEED AS CORRECT.
- WHERE REQUIRED ANY BUILDINGS, TRENCHES, FENCES AND OTHER STRUCTURES ON SITE ARE TO BE REMOVED AS DIRECTED BY THE ENGINEER. THE COST OF REMOVAL IS TO BE INCLUDED IN THE OVERALL EARTHWORKS FIGURE UNLESS A SPECIFIC ITEM FOR REMOVAL IS DENOTED IN THE SCHEDULE.
- ALL EXCAVATED ROCK AND SURPLUS SPOIL TO BE REMOVED AND DISPOSED OFF SITE UNLESS NOTED OTHERWISE.
- ALL FILLING ON LOTS AND WITHIN ROAD RESERVES GREATER THAN 200mm IS TO BE UNDERTAKEN USING LEVEL 1 SUPERVISION AND BE COMPLETED IN ACCORDANCE WITH AS 3798-2007. FILL AREAS ARE TO BE STRIPPED OF TOPSOIL, FILLED AND REPLACED WITH TOPSOIL (WHERE REQUIRED) TO OBTAIN THE FINAL LEVELS SHOWN ON THE DRAWINGS.
- FILLING MATERIAL IS TO BE IN ACCORDANCE WITH THE SPECIFICATION, AS 3798-2007 & TO THE SATISFACTION OF COUNCIL AND THE SUPERINTENDENT.
- ALL BATTERS SHALL BE 1 IN 6, UNLESS OTHERWISE SHOWN.
- NO FILL OR STOCKPILING OF MATERIAL IS TO BE PLACED ON ANY RESERVE FOR PUBLIC OPEN SPACE UNLESS OTHERWISE DIRECTED OR APPROVED BY THE SUPERINTENDENT.
- T.B.M.'S TO BE RE-ESTABLISHED BY THE LICENSED SURVEYOR IF FOUND TO BE MISSING AT THE COMMENCEMENT OF CONSTRUCTION. THE CONTRACTOR WILL BE RESPONSIBLE FOR CARE AND MAINTENANCE OF T.B.M.'S THEREAFTER.
- AT LEAST 3 DAYS PRIOR TO COMMENCING WORK ON EXCAVATIONS IN EXCESS OF 150mm DEEP, A NOTIFICATION FORM MUST BE SENT TO WORKSAFE. THE CONTRACTOR IS TO COMPLY WITH WORKSAFE, THE MINES (TRENCHES) REGULATION 1982, THE MINES ACT 1958 AND OCCUPATIONAL HEALTH AND SAFETY ACT 1985, 2004.
- ALL SERVICE TRENCHES UNDER DRIVEWAYS, FOOTPATHS AND PARKING BAYS TO BE BACKFILLED WITH CLASS 2 CRUSHED ROCK. SERVICE TRENCHES LESS THAN 750mm BEHIND KERB AND CHANNEL OR PAVED TRAFFIC AREAS ARE ALSO TO BE BACKFILLED WITH COMPACTED CLASS 2 CRUSHED ROCK.
- WHERE REQUIRED, ALL EXISTING DAMS, DEPRESSIONS AND DRAINS ARE TO BE BREACHED, DRAINED, DESLUGGED AND SHALL BE EXCAVATED TO A CLEAN FIRM BASE. THE SURFACE SHALL BE INSPECTED, APPROVED AND LEVELED BY THE ENGINEER PRIOR TO COMMENCEMENT OF FILLING. THE FILL SHALL BE APPROVED SELECTED ON SITE MATERIAL OR APPROVED IMPORTED MATERIAL. THE FILL SHALL BE PLACED UNDER CONTROLLED MOISTURE CONDITIONS IN ACCORDANCE WITH THE SPECIFICATION
- NO BLASTING TO BE CARRIED OUT WITHIN THE MUNICIPALITY WITHOUT OBTAINING COUNCIL'S PERMISSION.

SERVICES

- GAS AND WATER CONDUITS ARE TO BE:
 - Ø50mm . CLASS 12 P.V.C. - SINGLE SERVICE
 - Ø100mm . CLASS 12 P.V.C. - DUAL SERVICE (DRINKING AND NON DRINKING WATER)
 WITH THE FOLLOWING MINIMUM COVER TO FINISHED SURFACE LEVELS:
 - ROAD PAVEMENT - 0.80m
 - VERGE, FOOTPATHS - 0.45m
- ALL SERVICE CONDUIT TRENCHES UNDER ROAD PAVEMENTS TO BE BACKFILLED IN ACCORDANCE WITH RELEVANT MUNICIPALITY OR ROAD AUTHORITY SPECIFICATION.

STORM WATER DRAINAGE

- AG/SUBSOIL DRAIN TO BE LAID BEHIND KERB WHERE REQUIRED IN ACCORDANCE WITH THE COUNCIL STANDARD DRAWINGS AND CONNECTED TO UNDERGROUND DRAINAGE.
- ALL STORMWATER DRAINS ARE TO BE CLASS '2' R.C. PIPES UNLESS OTHERWISE SHOWN. R.C. JOINTS UP TO 700mm IN DIAMETER ARE TO BE RUBBER RING JOINTED (R.R.J.). PIPES ABOVE THIS SIZE MAY BE FLUSH JOINTED WITH EXTERNAL SEALING BANDS.

- CENTRELINES OF ALL EASEMENT DRAINS ARE OFFSET 1.0m OR 2.2m (WHERE OUTSIDE OF SEWER) FROM THE PROPERTY LINE UNLESS SHOWN OTHERWISE.
- WHERE CURVED PIPES ARE SHOWN ON THE FACE PLANS THEY ARE TO BE LAID PARALLEL TO THE BACK OF KERB, EXCEPT WHERE A RADIUS HAS BEEN SPECIFICALLY NOMINATED. CURVED PIPES ARE TO BE APPROVED BY COUNCIL AND IN ACCORDANCE WITH THE MANUFACTURERS SPECIFICATIONS.
- WATER TAPPINGS TO BE LOCATED IN CENTRE OF ALLOTMENTS UNLESS OTHERWISE SHOWN.
- TELSTRA ARE TO BE NOTIFIED 7 DAYS PRIOR TO PLACEMENT OF CONCRETE WORKS.

PAVEMENT

- PAVEMENT DEPTHS MAY BE MODIFIED AS DIRECTED BY THE SUPERINTENDENT. PAVEMENT TO BE BOXED OUT TO MINIMUM DEPTH DENOTED, INSPECTED AND IF SUBGRADE IS IN QUESTION, FURTHER TESTING CARRIED OUT TO DETERMINE FINAL PAVEMENT DEPTH.
- WHERE PAVEMENT IS CONSTRUCTED ON FILLING, FILL MATERIAL IS TO BE APPROVED BY THE SUPERINTENDENT AND COUNCIL. FILLING TO BE CONSTRUCTED IN LAYERS 150mm THICK WITH COMPACTION ACHIEVING 95% AUSTRALIAN STANDARD DENSITY.
- WHEN PAVEMENT EXCAVATION IS IN ROCK ALL LOOSE MATERIAL (INCLUDING ROCKS AND CLAY) MUST BE REMOVED. THE SUB-GRADE MUST THEN BE REGULATED WITH COUNCIL APPROVED MATERIAL.

SIGNAGE AND LINEMARKING

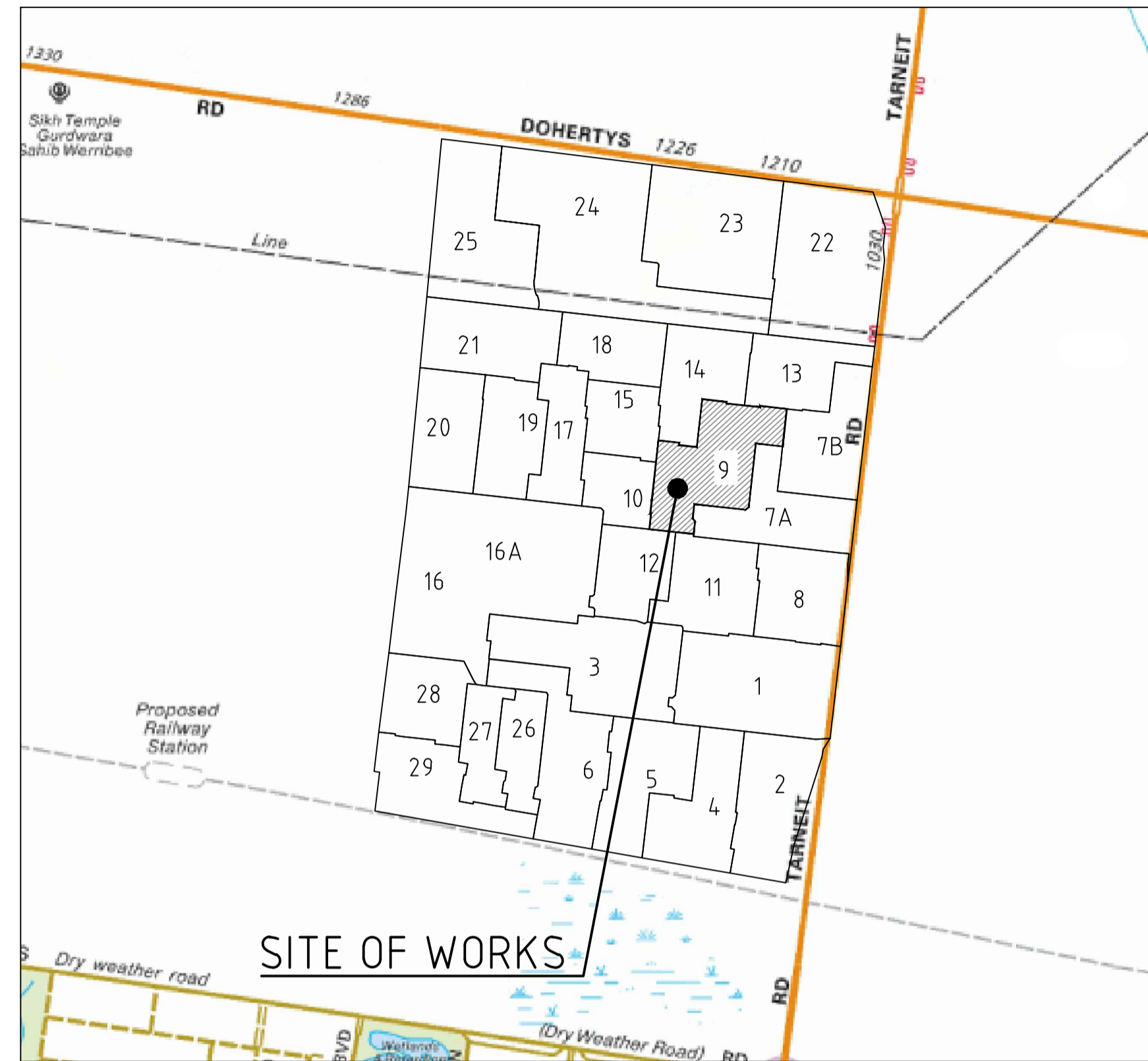
- LINEMARKING AND SIGNAGE TO BE INSTALLED IN ACCORDANCE WITH AS 1742 SERIES UNLESS NOTED OTHERWISE. STREET SIGNS ARE TO BE INSTALLED IN ACCORDANCE WITH COUNCIL STANDARDS.
- ALL TEMPORARY WARNING SIGNS USED DURING CONSTRUCTION SHALL BE SUPPLIED AND MAINTAINED IN ACCORDANCE WITH AS 1742-3.
- TACTILE GROUND SURFACE INDICATORS ARE TO BE INSTALLED IN ACCORDANCE WITH THE DISABILITY DISCRIMINATION ACT AND RELEVANT COUNCIL STANDARD DRAWINGS.

ENVIRONMENTAL

- CONTRACTOR TO PROVIDE AN ENVIRONMENTAL MANAGEMENT PLAN INCLUDING SILT AND SEDIMENT RUNOFF PROTECTION ETC. PRIOR TO THE COMMENCEMENT OF WORKS.
- ALL TREES AND SHRUBS ARE TO BE RETAINED UNLESS OTHERWISE SHOWN. IF ROAD AND DRAINAGE CONSTRUCTION NECESSITATES THEIR REMOVAL, WRITTEN PERMISSION MUST BE OBTAINED FROM THE SUPERINTENDENT.
- TREES NOT SPECIFIED FOR REMOVAL ARE TO BE PROTECTED WITH APPROPRIATE EXCLUSION FENCING PRIOR TO COMMENCEMENT OF ANY WORKS.
- THE CONTRACTOR IS REQUIRED TO OBTAIN A 'PERMIT TO WORK' FROM MELBOURNE WATER'S SURVEILLANCE OFFICER AT THE PRE-COMMENCEMENT MEETING. THE CONTRACTOR IS REQUIRED TO ENSURE THAT THE 'PERMIT TO WORK' IS KEPT UP TO DATE FOR THE DURATION OF THE CONTRACT.

DRAWING SCHEDULE

DRAWING	DESCRIPTION	SHEET No.	REVISION
CR100	GENERAL NOTES - FACE SHEET	1	5
CR200	ROAD LAYOUT PLANS - FACE PLAN	2	3
CR201	ROAD LAYOUT PLANS - SERVICES PLAN	3	2
CR300	ROAD LONG SECTIONS - SHEET 1	4	1
CR301	ROAD LONG SECTIONS - SHEET 2	5	2
CR302	ROAD LONG SECTIONS - SHEET 3	6	1
CR400	ROAD CROSS SECTIONS - SHEET 1	7	2
CR401	ROAD CROSS SECTIONS - SHEET 2	8	2
CR402	ROAD CROSS SECTIONS - SHEET 3	9	2
CR403	ROAD CROSS SECTIONS - SHEET 4	10	2
CR404	ROAD CROSS SECTIONS - SHEET 5	11	2
CR500	INTERSECTION DETAILS - SHEET 1	12	3
CR501	INTERSECTION DETAILS - SHEET 2	13	3
CR600	DRAINAGE LONG SECTIONS - SHEET 1	14	1
CR601	DRAINAGE LONG SECTIONS - SHEET 2	15	2
CR700	PAVEMENT AND TYPICAL DETAILS - SHEET 1	16	2
CR701	PAVEMENT AND TYPICAL DETAILS - SHEET 2	17	3
CR702	PAVEMENT AND TYPICAL DETAILS - SHEET 3	18	2
CR800	SIGNAGE AND LINEMARKING - SHEET 1	19	2



LOCALITY PLAN

SCALE: NOT TO SCALE
MELWAY: 359 B10

WARNING
BEWARE OF UNDERGROUND/OVERHEAD SERVICES
THE LOCATION OF SERVICES ARE APPROXIMATE ONLY AND THEIR EXACT POSITION SHOULD BE PROVEN ON SITE. NO GUARANTEE IS GIVEN THAT ALL EXISTING SERVICES ARE SHOWN. SPECIAL CONSIDERATION SHOULD BE GIVEN TO CONSTRUCTION PROCEDURES UNDER OVERHEAD ELECTRICITY TRANSMISSION LINES.



LEGEND

DESCRIPTION	EXISTING	PROPOSED
WATER MAIN, VALVE AND HYDRANT	DW	DW
WATER RECYCLED	NDW	NDW
UNDERGROUND ELECTRICITY	E	E
OVERHEAD ELECTRICITY & POLE	OE	OE
TELECOMMUNICATIONS & SERVICE PIT	T	T
OPTIC FIBRE	OF	OF
OVERHEAD TELECOMMUNICATIONS	OT	OT
GAS MAIN	G	G
BRANCH SEWER & MAINTENANCE STRUCTURE	S	S
SEWER & MAINTENANCE STRUCTURE	S	S
CENTRAL INVERT	S	S
COUNCIL STORMWATER DRAIN AND PIT	S	S
STORM WATER DRAINAGE PROPERTY INLETS	S	S
COUNCIL STORM WATER PITS	S	S
HOUSE DRAIN	H	H
AG DRAIN AND FLUSHER	AG	AG
STORM WATER DRAINAGE PIT NUMBER	Ex. 4.7	1
GAS & WATER CONDUITS	GW	GW
CONCRETE VEHICLE CROSSING		
INDUSTRIAL / HEAVY DUTY VEHICLE CROSSING		
FOOTPATH		
RIDGE / CHANGE OF GRADE LINE		
SURFACE CONTOUR MINOR	- 169.00 -	169.00
SURFACE CONTOUR MAJOR	- 168.90 -	168.90
SURFACE LEVEL	E123.45	F124.68
BATTER LEVEL (TOP / TOE)	T124.80	T124.80
EARTHWORKS GRADE		1 in 150
SIGN AND POST		
LIGHT & POLE (BY OTHERS)		
PERMANENT SURVEY MARK		
TEMPORARY BENCH MARK		
BOLLARD		
ROAD CHAINAGES	CH116.57 (L/R)TP CH116.57	CH116.57 (L/R)TP CH116.57
LOT CHAINAGES	CH20.06	CH20.06
SETOUT POINT		A2
LIMIT OF WORKS		
BATTER		
EXCAVATION GREATER THAN 0.20m		
FILLING GREATER THAN 0.20m		
FENCE - TREE PROTECTION		
FENCE - VEHICLE EXCLUSION		
FENCES		
FENCE REMOVAL		
GUARD RAIL		
TREE (& SURVEYED CANOPY) TO BE RETAINED		
TREE TO BE PROTECTED		
TREE TO BE REMOVED		
VEGETATION LINE		
FOOTPATH		
TACTILE GROUND SURFACE INDICATOR		
KERB TRANSITION		B2 SM2

file name: 306255CR100.dwg, layout name: CD100, plotted by: George Vynnycky, file location: G:\306255\DWG\ALCA\Plot.dwg, date: 30/07/2020 9:38 AM, sheet: 1 of 19 Sheets

Rev	Description	Author	Date	Scale
5	AS CONSTRUCTED	M.H.	30/07/20	Scale
4	KERBS CHANGED FROM 450 TO 600, RAISED PAVEMENT SPECIFICATIONS AMENDED	M.H.	09/07/20	
3	LOT 934 GAS WATER CONDUIT AMENDED	M.H.	30/03/20	
2	JOINTING PLAN AMENDED	M.H.	18/03/20	
1	KERB RADIUS AND ROAD CHAINAGES AMENDED, JOINTING PLAN AMENDED	M.H.	21/02/20	
0	ISSUED FOR CONSTRUCTION	M.H.	03/09/19	
B	AMENDED AS PER COUNCIL COMMENTS	M.H.	30/08/19	
A	ISSUED FOR APPROVAL	M.H.	15/07/19	
Rev	Amendments	Approved	Date	



© Spiire Australia Pty Ltd All Rights Reserved
This document is produced by Spiire Australia Pty Ltd solely for the benefit of and use by the client in accordance with the terms of the retainer. Spiire Australia Pty Ltd does not and shall not assume any responsibility or liability whatsoever to any third party arising out of any use or reliance by third party on the content of this document.

spiire

414 LA TROBE STREET PO BOX 16084 MELBOURNE
VICTORIA 3007 AUSTRALIA T 61 3 9993 7888
spiire.com.au ABN 55 050 029 635

PEET

Designed
K. AYRES
Authorised
M. HOLMES

Checked
R. DE TEMPLE
Date
03/09/19

**NEWHAVEN ESTATE
STAGE 9
ROAD AND DRAINAGE
FACE SHEET**
WYNDHAM CITY COUNCIL
PEET NO. 1895 PTY LTD

AS CONSTRUCTED Drg No **306255CR100** Rev **5**

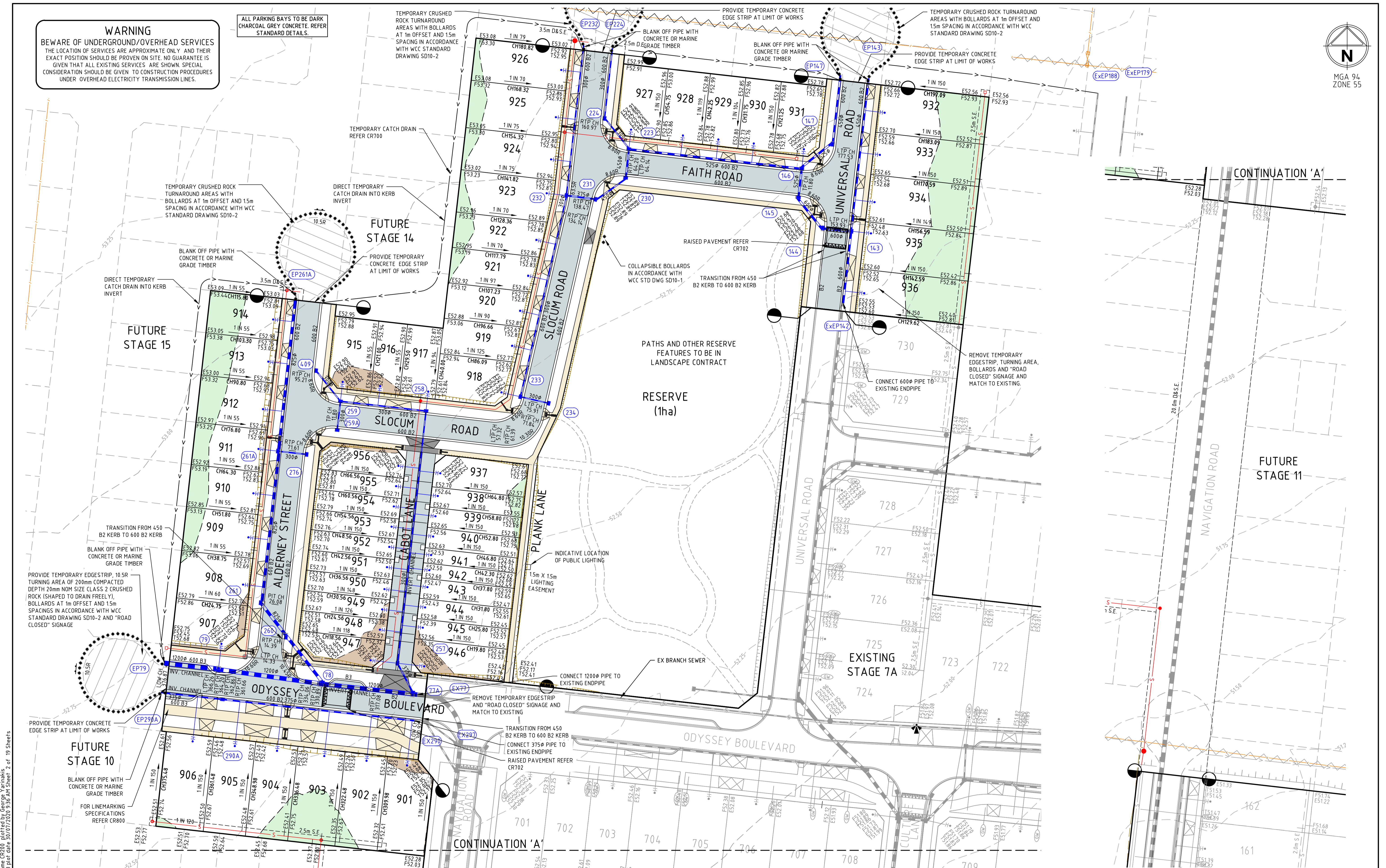
WARNING
BEWARE OF UNDERGROUND/OVERHEAD SERVICES
THE LOCATION OF SERVICES ARE APPROXIMATE ONLY AND THEIR EXACT POSITION SHOULD BE PROVEN ON SITE. NO GUARANTEE IS GIVEN THAT ALL EXISTING SERVICES ARE SHOWN. SPECIAL CONSIDERATION SHOULD BE GIVEN TO CONSTRUCTION PROCEDURES UNDER OVERHEAD ELECTRICITY TRANSMISSION LINES.

ALL PARKING BAYS TO BE DARK CHARCOAL GREY CONCRETE. REFER STANDARD DETAILS.

TEMPORARY CRUSHED ROCK TURNAROUND AREAS WITH BOLLARDS AT 1m OFFSET AND 15m SPACING IN ACCORDANCE WITH WCC STANDARD DRAWING SD10-2

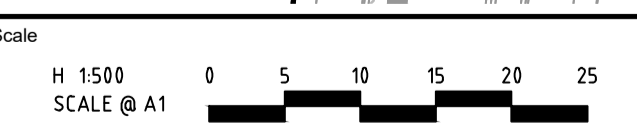
PROVIDE TEMPORARY CONCRETE EDGE STRIP AT LIMIT OF WORKS

TEMPORARY CRUSHED ROCK TURNAROUND AREAS WITH BOLLARDS AT 1m OFFSET AND 15m SPACING IN ACCORDANCE WITH WCC STANDARD DRAWING SD10-2



file name: 306255CR200.dwg, layout name: CR200, created by: George Yancovich, file location: G:\306255\civil\ALCAD\Plot date: 30/07/2020 9:36 AM Sheet: 2 of 19 Sheets

Rev	Amendments	Approved	Date
3	AS CONSTRUCTED	M.H.	30/07/20
2	KERBS CHANGED FROM 450 TO 600	M.H.	09/07/20
1	KERB RADIUS AND ROAD CHAINAGES AMENDED	M.H.	21/02/20
0	ISSUED FOR CONSTRUCTION	M.H.	03/09/19
B	LOT LEVELS AMENDED, EDGE STRIP NOTE, TGS'S & LIGHTING EASEMENT ADDED	M.H.	30/08/19
A	ISSUED FOR APPROVAL	M.H.	15/07/19



© Spiire Australia Pty Ltd All Rights Reserved
This document is produced by Spiire Australia Pty Ltd solely for the benefit of and use by the client in accordance with the terms of the retainer. Spiire Australia Pty Ltd does not and shall not assume any responsibility or liability whatsoever to any third party arising out of any use or reliance by third party on the content of this document.

spiire

414 LA TROBE STREET PO BOX 16084 MELBOURNE
VICTORIA 8007 AUSTRALIA T 61 3 9993 7888
spiire.com.au ABN 55 050 029 635

PEET

Designed
K. AYRES
Authorised
M. HOLMES

Checked
R. DE TEMPLE
Date
03/09/19

**NEWHAVEN ESTATE
STAGE 9
ROAD AND DRAINAGE
FACE PLAN**
WYNDHAM CITY COUNCIL
PEET NO. 1895 PTY LTD

AS CONSTRUCTED Dwg No. 306255CR200 Rev 3