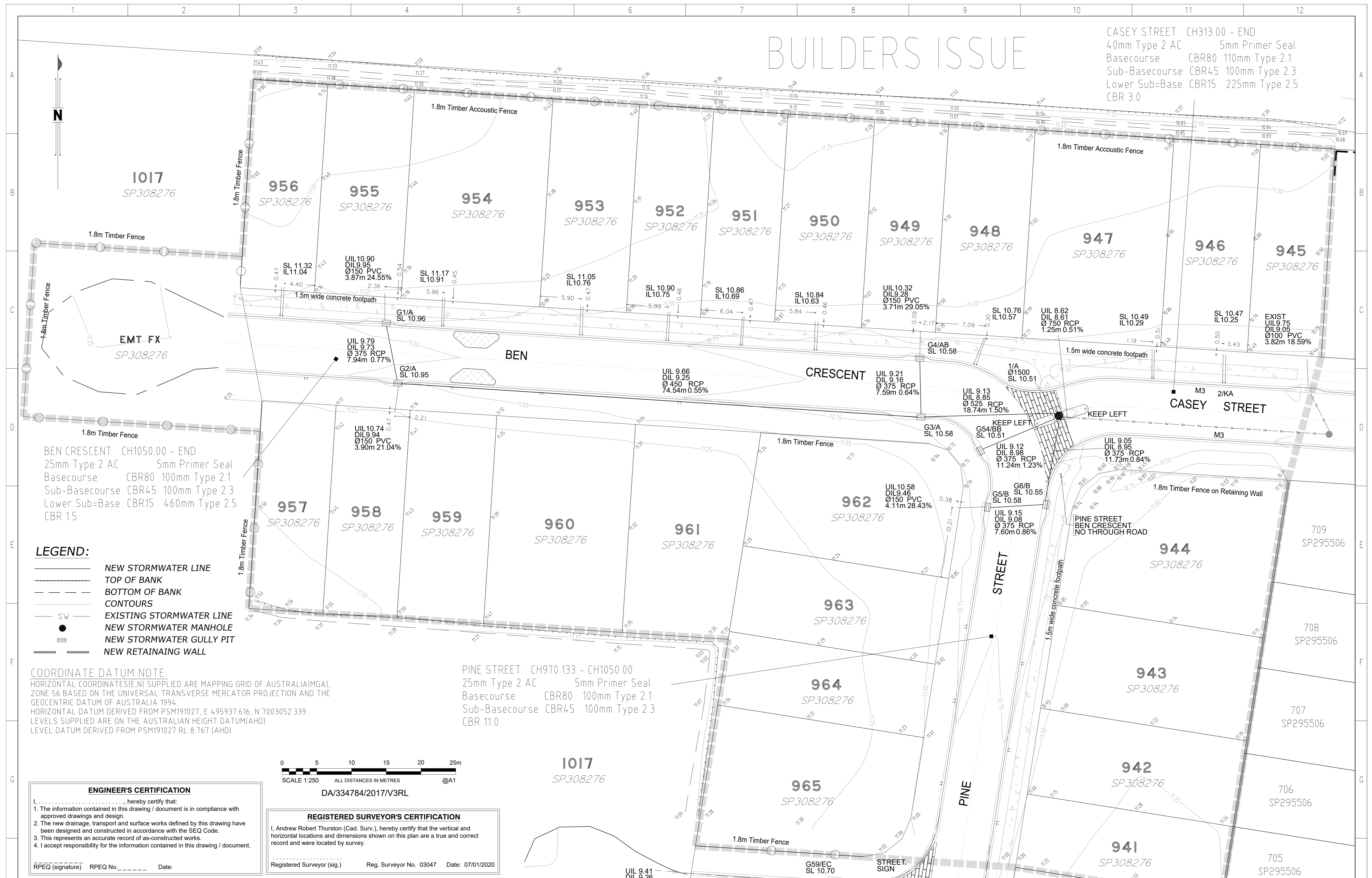


BUILDERS ISSUE

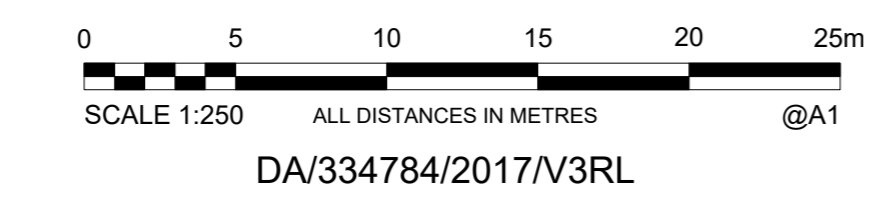
CASEY STREET CH313.00 - END
 40mm Type 2 AC 5mm Primer Seal
 Basecourse CBR80 100mm Type 2.1
 Sub-Basecourse CBR45 100mm Type 2.3
 Lower Sub-Base CBR15 225mm Type 2.5
 CBR 3.0



LEGEND:

- NEW STORMWATER LINE
- TOP OF BANK
- BOTTOM OF BANK
- CONTOURS
- EXISTING STORMWATER LINE
- NEW STORMWATER MANHOLE
- NEW STORMWATER GULLY PIT
- NEW RETAINING WALL

COORDINATE DATUM NOTE:
 HORIZONTAL COORDINATES(E,N) SUPPLIED ARE MAPPING GRID OF AUSTRALIA(MGA), ZONE 56 BASED ON THE UNIVERSAL TRANSVERSE MERCATOR PROJECTION AND THE GEOCENTRIC DATUM OF AUSTRALIA 1994.
 HORIZONTAL DATUM DERIVED FROM PSM191027, E 495937.616, N 7003052.339.
 LEVELS SUPPLIED ARE ON THE AUSTRALIAN HEIGHT DATUM(AHD)
 LEVEL DATUM DERIVED FROM PSM191027 RL 8.767 (AHD)



ENGINEER'S CERTIFICATION
 I, _____, hereby certify that:
 1. The information contained in this drawing / document is in compliance with approved drawings and design.
 2. The new drainage, transport and surface works defined by this drawing have been designed and constructed in accordance with the SEQ Code.
 3. This represents an accurate record of as-constructed works.
 4. I accept responsibility for the information contained in this drawing / document.
 RPEQ (signature) RPEQ No. _____ Date: _____

REGISTERED SURVEYOR'S CERTIFICATION
 I, Andrew Robert Thurston (Cad. Surv.), hereby certify that the vertical and horizontal locations and dimensions shown on this plan are a true and correct record and were located by survey.
 Registered Surveyor (sig.) Reg. Surveyor No. 03047 Date: 07/01/2020

PINE STREET CH970.133 - CH1050.00
 25mm Type 2 AC 5mm Primer Seal
 Basecourse CBR80 100mm Type 2.1
 Sub-Basecourse CBR45 100mm Type 2.3
 CBR 11.0

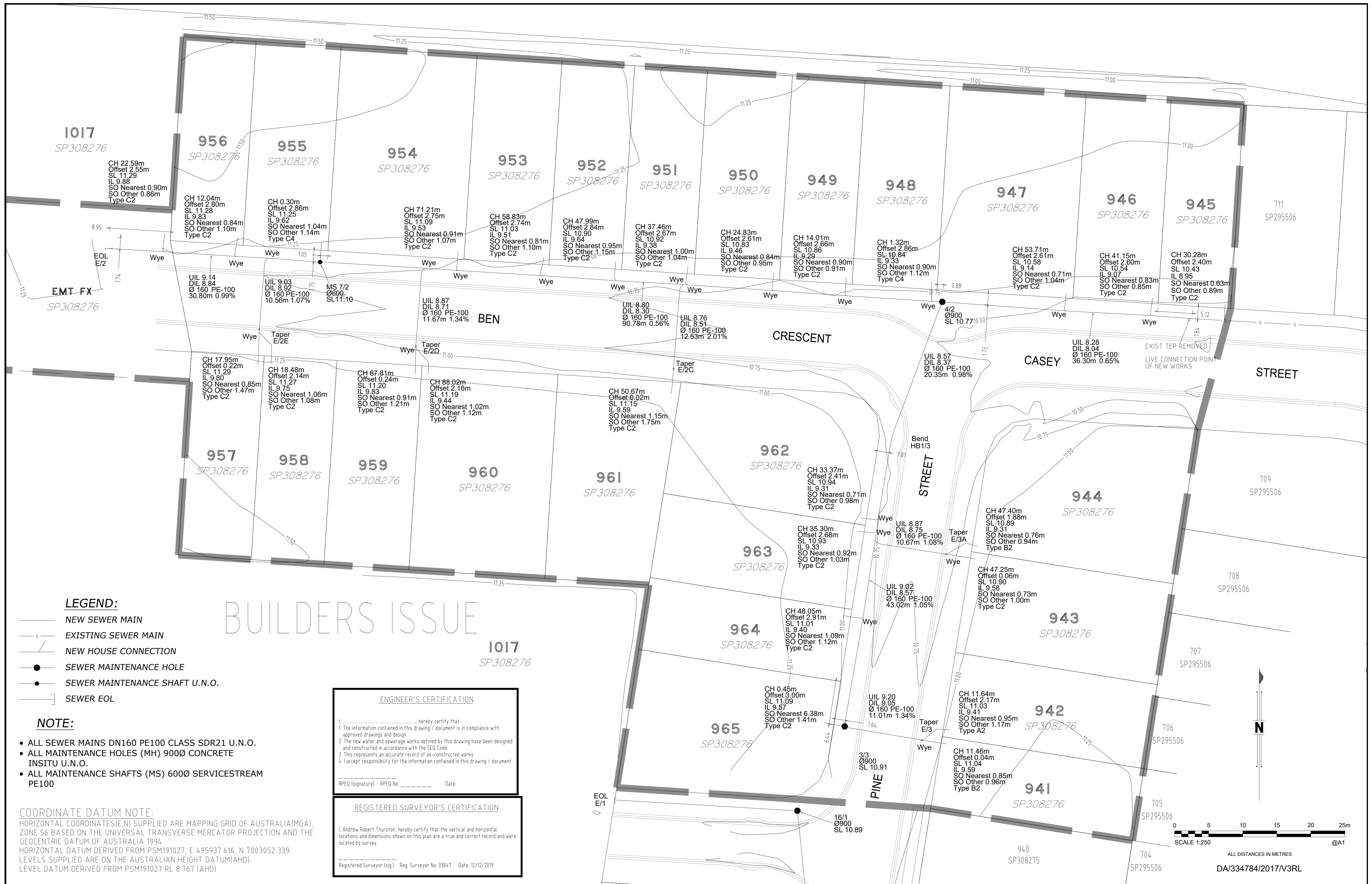
REV.	REVISION DESCRIPTION	DRG. No.	DESCRIPTION	DESIGN FILE No.	CONSTRUCT. No.	DESIGNED DATE	DATE
A	BUILDERS ISSUE			SB3594/18A		J Braga	07/01/2020
						A Dahn-Harvey	07/01/2020

THIS WORK WAS PREPARED BY:
WOLTER consulting group
 SCALE 1:250 ORIGINAL SIZE A1

MORETON BAY REGIONAL COUNCIL
 CABOOLTURE DISTRICT OFFICE
 2 HASKING STREET CABOOLTURE QLD 4510
 PO BOX 159 CABOOLTURE QLD 4510
 Telephone: (07) 5433 0100
 Fax: (07) 5433 4000

RIVERBANK ESTATE
 STAGE 18A
 BUILDERS ISSUE
 ROADS AND DRAINAGE

MBRC SUBDIVISION REFERENCE	
DA/34784/2017/V3RL	
No. 1 OF 1 PLANS	
ASCON GRID NUMBER	REV.
	C



A1	INDEX	DATE	BUILDERS ISSUE	REVISIONS	DRAWN	CHECKED	PASSED	INITIALS	DATE
	A	12/12/2019	BUILDERS ISSUE		J.Braga	A.Dahn-Harvey	A.Thurston		12/12/2019

WOLTER consulting group

Planning Urban Design Landscape Environment Surveying

Brisbane: Level 2, 1 Breakfast Ck Road, Newstead, QLD 4006 Phone: (07) 3666 5200



Unitywater

SB3594/18B
RIVERBANK ESTATE STAGE 18A
BUILDERS ISSUE
SEWER RETICULATION

SHEET 1 OF 2 SHEETS	SCALE 250
REVISION DATE 12/12/2019	REVISION A
DISCIPLINE CODE C	
DRAWING NO. U-2019-1957	



BUILDERS ISSUE

1017
SP308276

LEGEND:

- NEW Ø100 PVC-O CLASS PN16 WATERMAIN OR Ø150 PVC-O CLASS PN16 WATERMAIN - AS NOTED
- NEW READY TAP HOUSE CONNECTION
- NEW HYDRANT
- NEW SLUICE VALVE
- NEW END CAP
- NEW WATER SERVICE CONDUIT 100Ø PVC-O
- EXISTING WATER MAIN
- NEW WATER SERVICE CONNECTION 20mm MANUFACTURER - ELSTER
- DICL WATERMAIN

ENGINEER'S CERTIFICATION

I, _____, hereby certify that:

- The information contained in this drawing / document is in compliance with approved drawings and design.
- The new water and sewerage works defined by this drawing have been designed and constructed in accordance with the SEQ Code.
- This represents an accurate record of as-constructed works.
- I accept responsibility for the information contained in this drawing / document.

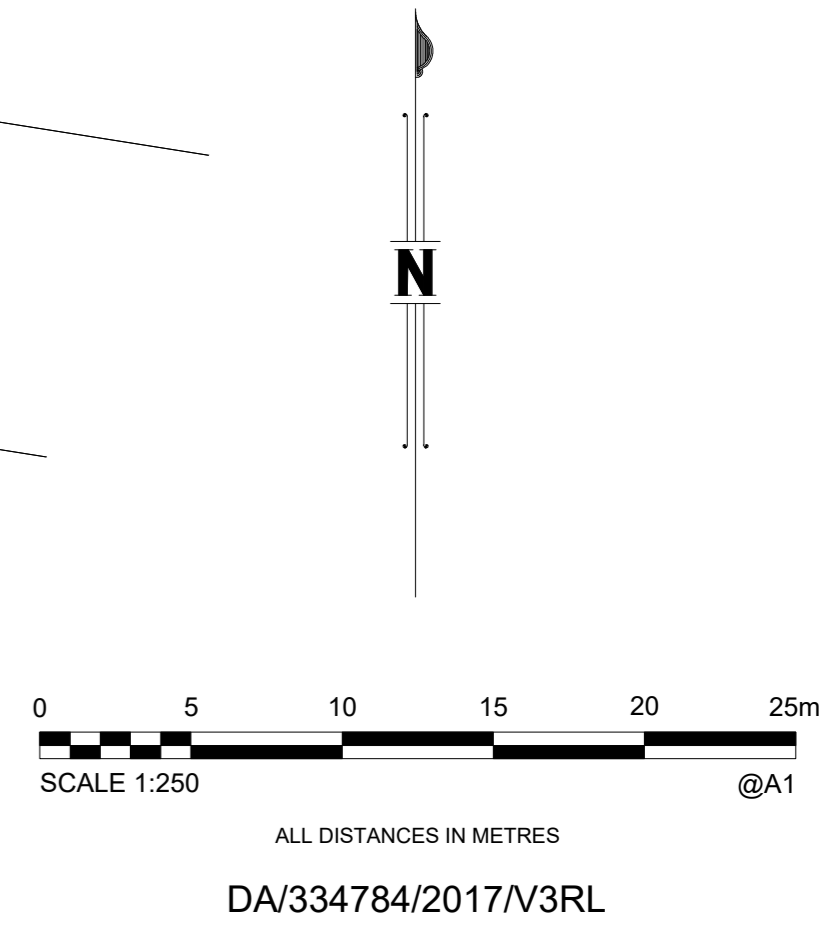
RPED (signature) RPED No. _____ Date: _____

REGISTERED SURVEYOR'S CERTIFICATION

I, Andrew Robert Thurston, hereby certify that the vertical and horizontal locations and dimensions shown on this plan are a true and correct record and were located by survey.

Registered Surveyor (sig) Reg. Surveyor No. 03047 Date: 12/12/2019

COORDINATE DATUM NOTE:
 HORIZONTAL COORDINATES(E,N) SUPPLIED ARE MAPPING GRID OF AUSTRALIA(MGA), ZONE 56 BASED ON THE UNIVERSAL TRANSVERSE MERCATOR PROJECTION AND THE GEOCENTRIC DATUM OF AUSTRALIA 1994.
 HORIZONTAL DATUM DERIVED FROM PSM191027, E 495937.616, N 7003052.339.
 LEVELS SUPPLIED ARE ON THE AUSTRALIAN HEIGHT DATUM(AHD)
 LEVEL DATUM DERIVED FROM PSM191027 RL 8.767 (AHD)



A1	INDEX	DATE	REVISIONS	DRAWN	CHECKED	PASSED	INITIALS	DATE
	A	21/11/2019	BUILDERS ISSUE	J.Braga	A.Dehn-Harvey	A.Thurston		21/11/2019

WOLTER consulting group

Planning Urban Design Landscape Environment Surveying

Brisbane: Level 2, 1 Breakfast Ck Road, Newstead, QLD 4006 Phone: (07) 3666 5200



Unitywater

SB3594/18B
 RIVERBANK ESTATE STAGE 18B
 BUILDERS ISSUE
 WATER RETICULATION

SHEET 3 OF 4 SHEETS	SCALE 250
REVISION DATE 02/12/2019	REVISION A
DISCIPLINE CODE C	
DRAWING NO. U-2019-1957	