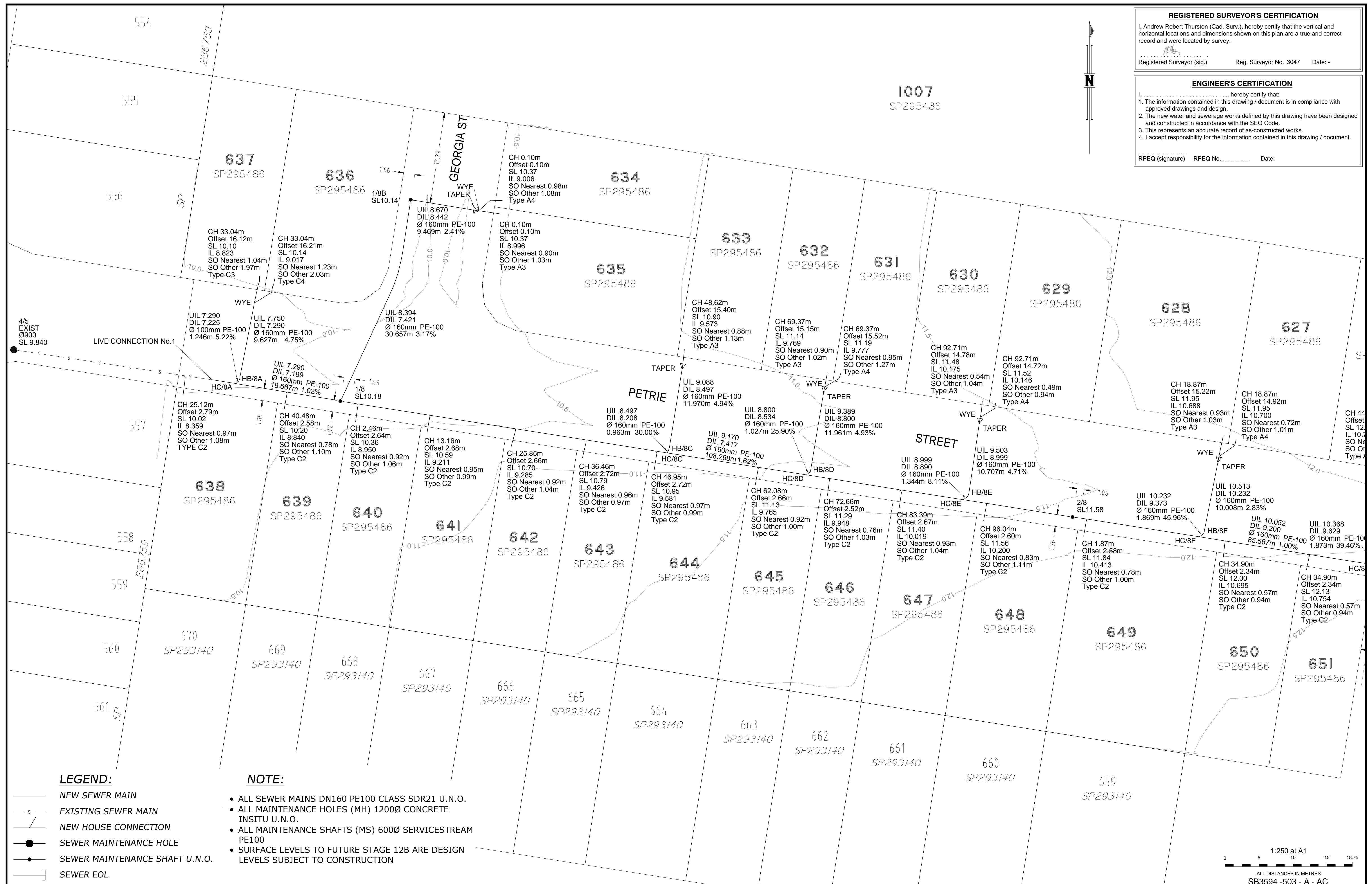


REGISTERED SURVEYOR'S CERTIFICATION
 I, Andrew Robert Thurston (Cad. Surv.), hereby certify that the vertical and horizontal locations and dimensions shown on this plan are a true and correct record and were located by survey.
 Registered Surveyor (sig.) _____ Reg. Surveyor No. 3047 Date: -

ENGINEER'S CERTIFICATION
 I, _____, hereby certify that:
 1. The information contained in this drawing / document is in compliance with approved drawings and design.
 2. The new water and sewerage works defined by this drawing have been designed and constructed in accordance with the SEQ Code.
 3. This represents an accurate record of as-constructed works.
 4. I accept responsibility for the information contained in this drawing / document.
 RPEQ (signature) _____ RPEQ No. _____ Date: _____



LEGEND:
 — NEW SEWER MAIN
 - - - EXISTING SEWER MAIN
 / NEW HOUSE CONNECTION
 ● SEWER MAINTENANCE HOLE
 ● SEWER MAINTENANCE SHAFT U.N.O.
 [] SEWER EOL

NOTE:

- ALL SEWER MAINS DN160 PE100 CLASS SDR21 U.N.O.
- ALL MAINTENANCE HOLES (MH) 1200Ø CONCRETE INSITU U.N.O.
- ALL MAINTENANCE SHAFTS (MS) 600Ø SERVICESTREAM PE100
- SURFACE LEVELS TO FUTURE STAGE 12B ARE DESIGN LEVELS SUBJECT TO CONSTRUCTION

1:250 at A1
 ALL DISTANCES IN METRES
 SB3594 -503 - A - AC

A1	INDEX	DATE	REVISIONS	DRAWN	CHECKED	PASSED
	A	29/08/2017	As Constructed	JC	ADH	AT

WOLTER consulting group
 Planning Urban Design Landscape Environment Surveying
 Brisbane: Level 2, 1 Breakfast Ck Road, Newstead, QLD 4006 Phone: (07) 3666 5200

DRAWN	JC	29/08/2017
CHECKED	JB	29/08/2017
PASSED	AT	29/08/2017
INITIALS	DATE	

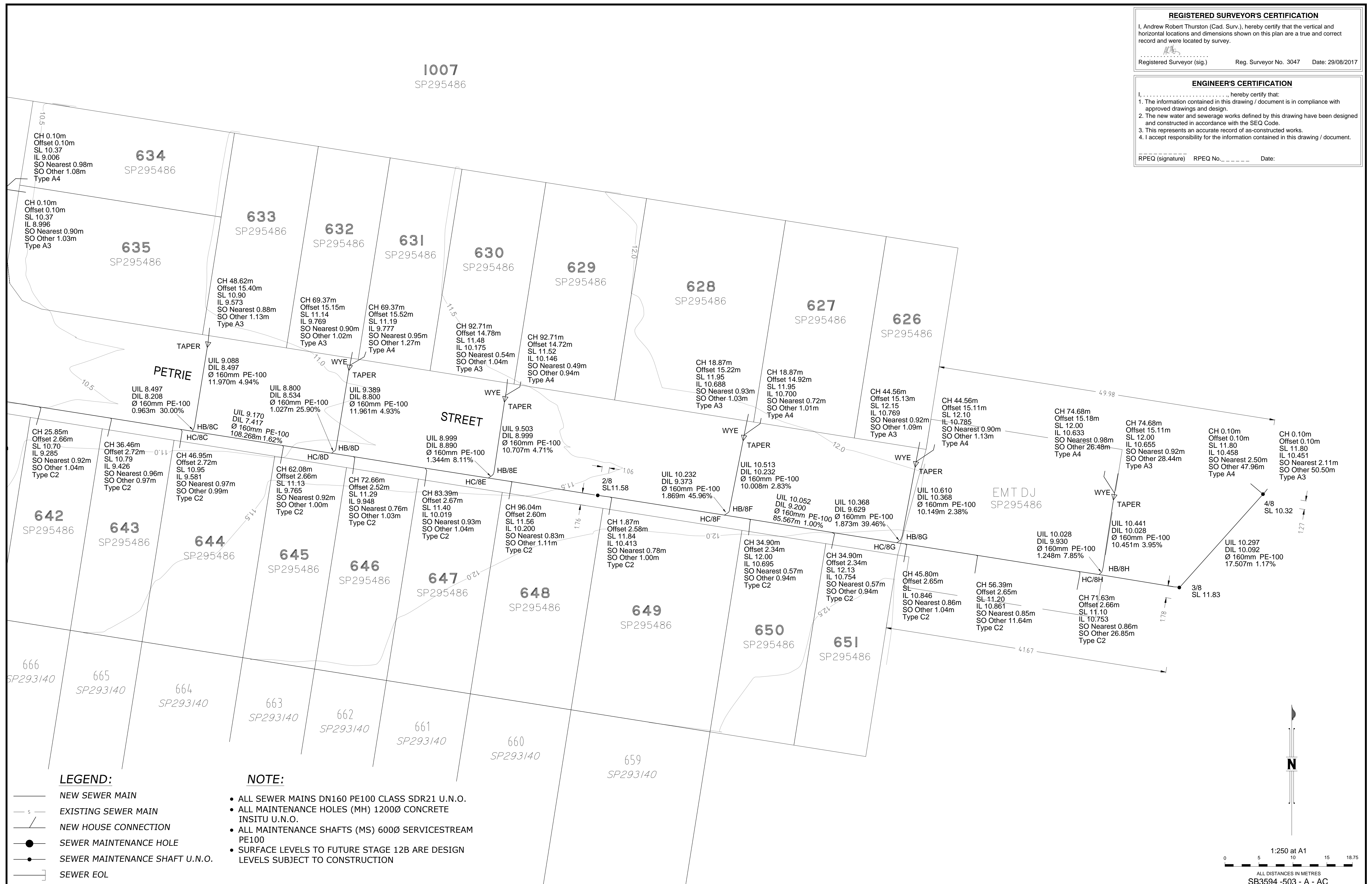


Unitywater
 Riverbank Estate Stage 12C
 As-Constructed Sewer Reticulation
 DA/31022/2015/V3RL

SCALE	1:250 (A1)
SHEET	1 OF 2 SHEETS
DRAWING NO.	

REGISTERED SURVEYOR'S CERTIFICATION
 I, Andrew Robert Thurston (Cad. Surv.), hereby certify that the vertical and horizontal locations and dimensions shown on this plan are a true and correct record and were located by survey.
 Registered Surveyor (sig.) _____ Reg. Surveyor No. 3047 Date: 29/08/2017

ENGINEER'S CERTIFICATION
 I, _____, hereby certify that:
 1. The information contained in this drawing / document is in compliance with approved drawings and design.
 2. The new water and sewerage works defined by this drawing have been designed and constructed in accordance with the SEQ Code.
 3. This represents an accurate record of as-constructed works.
 4. I accept responsibility for the information contained in this drawing / document.
 RPEQ (signature) _____ RPEQ No. _____ Date: _____



LEGEND:

- NEW SEWER MAIN
- - - EXISTING SEWER MAIN
- / — NEW HOUSE CONNECTION
- SEWER MAINTENANCE HOLE
- SEWER MAINTENANCE SHAFT U.N.O.
- SEWER EOL

NOTE:

- ALL SEWER MAINS DN160 PE100 CLASS SDR21 U.N.O.
- ALL MAINTENANCE HOLES (MH) 1200Ø CONCRETE INSITU U.N.O.
- ALL MAINTENANCE SHAFTS (MS) 600Ø SERVICESTREAM PE100
- SURFACE LEVELS TO FUTURE STAGE 12B ARE DESIGN LEVELS SUBJECT TO CONSTRUCTION

A1

INDEX	DATE	REVISIONS	DRAWN	CHECKED	PASSED
A	29/08/2017	As Constructed	JC	ADH	AT

DRAWN	CHECKED	PASSED	INITIALS	DATE
JC	NDH	AT		29/08/2017

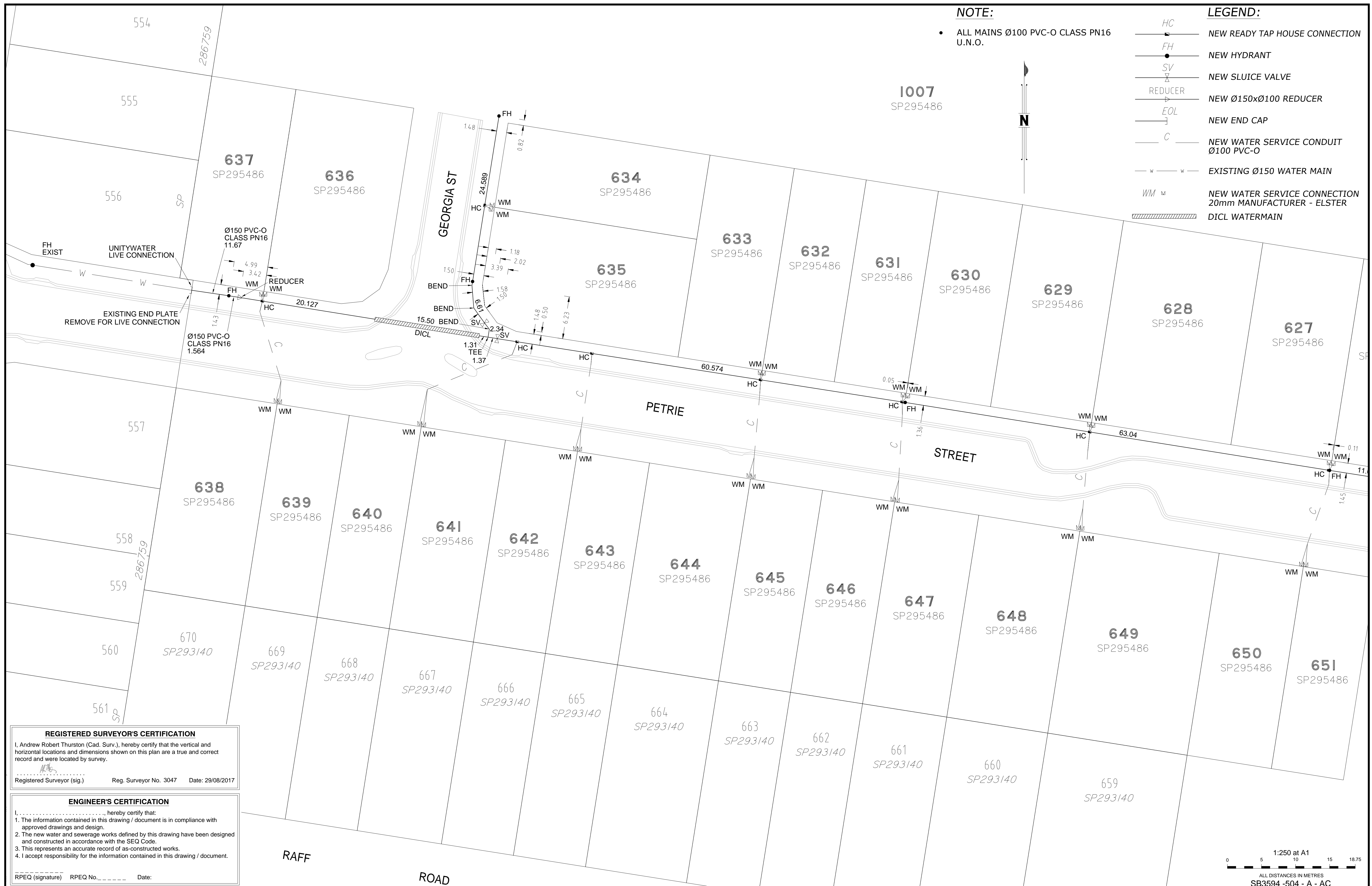
WOLTER consulting group
 Planning Urban Design Landscape Environment Surveying
 Brisbane: Level 2, 1 Breakfast Ck Road, Newstead, QLD 4006 Phone: (07) 3666 5200

Unitywater

Unitywater
 Riverbank Estate Stage 12C
 As-Constructed Sewer Reticulation
 DA/31022/2015/V3RL

1:250 at A1
 ALL DISTANCES IN METRES
 SB3594 -503 - A - AC

SCALE	SHEET	DRAWING NO.
1:250 (A1)	2 OF 2 SHEETS	

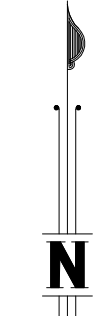


NOTE:

- ALL MAINS Ø100 PVC-O CLASS PN16 U.N.O.

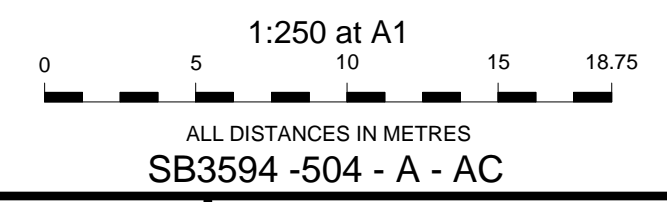
LEGEND:

- HC — NEW READY TAP HOUSE CONNECTION
- FH — NEW HYDRANT
- SV — NEW SLUICE VALVE
- REDUCER — NEW Ø150xØ100 REDUCER
- EOL — NEW END CAP
- C — NEW WATER SERVICE CONDUIT Ø100 PVC-O
- w — w — EXISTING Ø150 WATER MAIN
- WM — NEW WATER SERVICE CONNECTION 20mm MANUFACTURER - ELSTER
- ////// DICT WATERMAIN



REGISTERED SURVEYOR'S CERTIFICATION
 I, Andrew Robert Thurston (Cad. Surv.), hereby certify that the vertical and horizontal locations and dimensions shown on this plan are a true and correct record and were located by survey.
 Registered Surveyor (sig.) _____ Reg. Surveyor No. 3047 Date: 29/08/2017

ENGINEER'S CERTIFICATION
 I, _____, hereby certify that:
 1. The information contained in this drawing / document is in compliance with approved drawings and design.
 2. The new water and sewerage works defined by this drawing have been designed and constructed in accordance with the SEQ Code.
 3. This represents an accurate record of as-constructed works.
 4. I accept responsibility for the information contained in this drawing / document.
 RPEQ (signature) _____ RPEQ No. _____ Date: _____



A1	INDEX	DATE	REVISIONS	DRAWN	CHECKED	PASSED
	A	29/08/2017	As Constructed	JC	ADH	AT

DRAWN	JC	29/08/2017
CHECKED	ADH	29/08/2017
PASSED	AT	29/08/2017
INITIALS	DATE	

WOLTER consulting group
 Planning Urban Design Landscape Environment Surveying
 Brisbane: Level 2, 1 Breakfast Ck Road, Newstead, QLD 4006 Phone: (07) 3666 5200

Unitywater

Unitywater
 Riverbank Estate Stage 12C
 As-Constructed Water Reticulation
 DA/31022/2015/V3RL

SCALE	1:250 (A1)
SHEET	1 OF 2 SHEETS
DRAWING NO.	

REGISTERED SURVEYOR'S CERTIFICATION
 I, Andrew Robert Thurston (Cad. Surv.), hereby certify that the vertical and horizontal locations and dimensions shown on this plan are a true and correct record and were located by survey.
 Registered Surveyor (sig.) _____ Reg. Surveyor No. 3047 Date: 29/08/2017

ENGINEER'S CERTIFICATION
 I, _____, hereby certify that:
 1. The information contained in this drawing / document is in compliance with approved drawings and design.
 2. The new water and sewerage works defined by this drawing have been designed and constructed in accordance with the SEQ Code.
 3. This represents an accurate record of as-constructed works.
 4. I accept responsibility for the information contained in this drawing / document.
 RPEQ (signature) _____ RPEQ No. _____ Date: _____

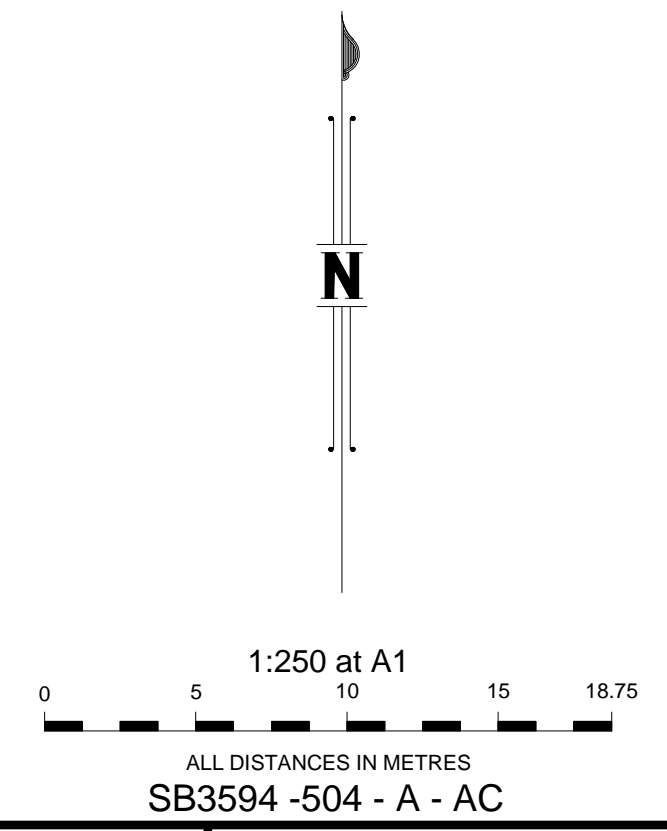
1007
 SP295486



- LEGEND:**
- HC — NEW READY TAP HOUSE CONNECTION
 - FH — NEW HYDRANT
 - SV — NEW SLUICE VALVE
 - REDUCER — NEW Ø150xØ100 REDUCER
 - EOL — NEW END CAP
 - C — NEW WATER SERVICE CONDUIT Ø100 PVC-O
 - w — w — EXISTING Ø150 WATER MAIN
 - WM — NEW WATER SERVICE CONNECTION 20mm MANUFACTURER - ELSTER
 - ////// — DICL WATERMAIN

NOTE:

- ALL MAINS Ø100 PVC-O CLASS PN16 U.N.O.



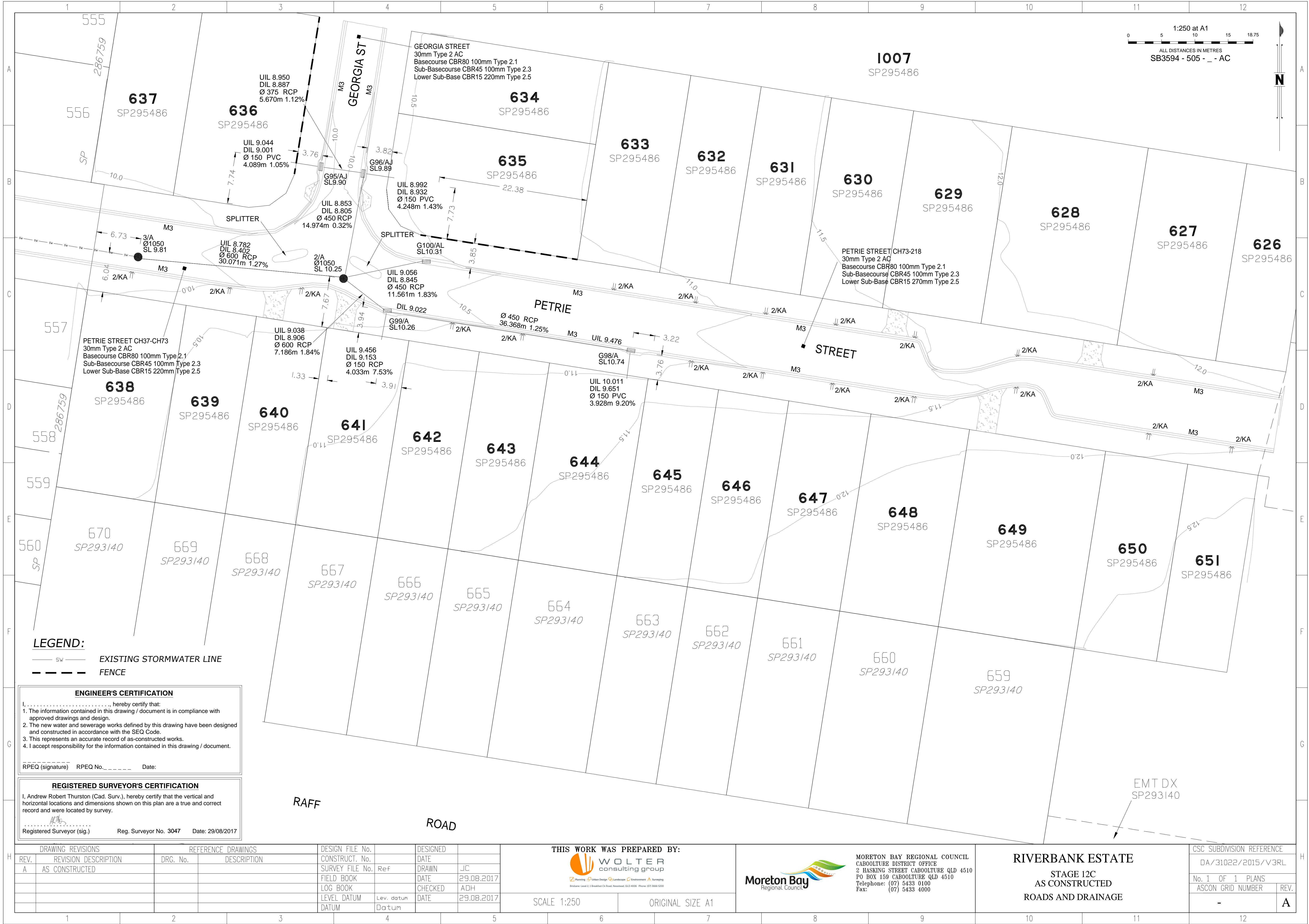
A1	INDEX	DATE	REVISIONS	DRAWN	CHECKED	PASSED
	A	29/08/2017	As Constructed	JC	ADH	AT

DRAWN	JC	29/08/2017
CHECKED	ADH	29/08/2017
PASSED	AT	29/08/2017
INITIALS	DATE	



Unitywater
 Riverbank Estate Stage 12C
 As-Constructed Water Reticulation
 DA/31022/2015/V3RL

SCALE	1:250 (A1)
SHEET	2 OF 2 SHEETS
DRAWING NO.	



LEGEND:
 --- SW --- EXISTING STORMWATER LINE
 - - - - - FENCE

ENGINEER'S CERTIFICATION
 I, _____, hereby certify that:
 1. The information contained in this drawing / document is in compliance with approved drawings and design.
 2. The new water and sewerage works defined by this drawing have been designed and constructed in accordance with the SEQ Code.
 3. This represents an accurate record of as-constructed works.
 4. I accept responsibility for the information contained in this drawing / document.
 RPEQ (signature) RPEQ No. _____ Date: _____

REGISTERED SURVEYOR'S CERTIFICATION
 I, Andrew Robert Thurston (Cad. Surv.), hereby certify that the vertical and horizontal locations and dimensions shown on this plan are a true and correct record and were located by survey.

 Registered Surveyor (sig.) Reg. Surveyor No. 3047 Date: 29/08/2017

DRAWING REVISIONS		REFERENCE DRAWINGS		DESIGN FILE No.	DESIGNED	THIS WORK WAS PREPARED BY:	
REV.	REVISION DESCRIPTION	DRG. No.	DESCRIPTION	CONSTRUCT. No.	DATE	WOLTER consulting group	
A	AS CONSTRUCTED			SURVEY FILE No.	DRAWN	JC	
				FIELD BOOK	DATE	29.08.2017	
				LOG BOOK	CHECKED	ADH	
				LEVEL DATUM	DATE	29.08.2017	
				DATUM	Datum		

SCALE 1:250 ORIGINAL SIZE A1

MORETON BAY REGIONAL COUNCIL
 CABOOLTURE DISTRICT OFFICE
 2 HASKING STREET CABOOLTURE QLD 4510
 PO BOX 159 CABOOLTURE QLD 4510
 Telephone: (07) 5433 0100
 Fax: (07) 5433 4000

RIVERBANK ESTATE
 STAGE 12C
 AS CONSTRUCTED
 ROADS AND DRAINAGE

CSC SUBDIVISION REFERENCE	
DA/31022/2015/V3RL	
No. 1 OF 1 PLANS	REV.
ASCON GRID NUMBER	A