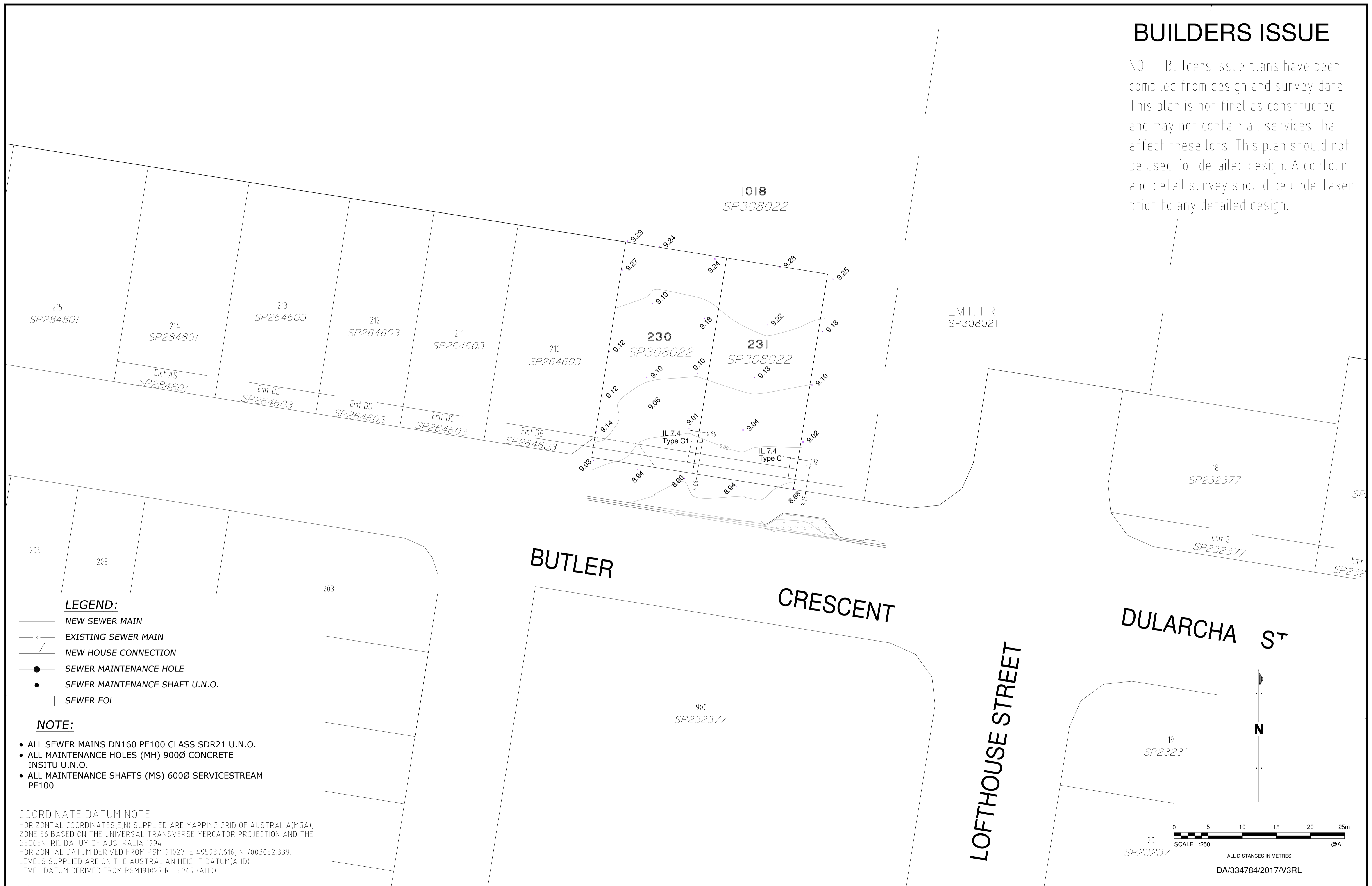


BUILDERS ISSUE

NOTE: Builders Issue plans have been compiled from design and survey data. This plan is not final as constructed and may not contain all services that affect these lots. This plan should not be used for detailed design. A contour and detail survey should be undertaken prior to any detailed design.



LEGEND:

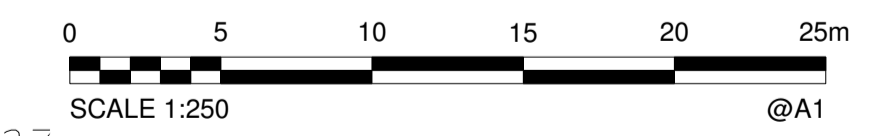
- NEW SEWER MAIN
- EXISTING SEWER MAIN
- NEW HOUSE CONNECTION
- SEWER MAINTENANCE HOLE
- SEWER MAINTENANCE SHAFT U.N.O.
- SEWER EOL

NOTE:

- ALL SEWER MAINS DN160 PE100 CLASS SDR21 U.N.O.
- ALL MAINTENANCE HOLES (MH) 900Ø CONCRETE INSITU U.N.O.
- ALL MAINTENANCE SHAFTS (MS) 600Ø SERVICESTREAM PE100

COORDINATE DATUM NOTE:

HORIZONTAL COORDINATES (E, N) SUPPLIED ARE MAPPING GRID OF AUSTRALIA (MGA), ZONE 56 BASED ON THE UNIVERSAL TRANSVERSE MERCATOR PROJECTION AND THE GEOCENTRIC DATUM OF AUSTRALIA 1994.
 HORIZONTAL DATUM DERIVED FROM PSM191027, E 495937.616, N 7003052.339.
 LEVELS SUPPLIED ARE ON THE AUSTRALIAN HEIGHT DATUM (AHD)
 LEVEL DATUM DERIVED FROM PSM191027 RL 8.767 (AHD)



ALL DISTANCES IN METRES
 DA/334784/2017/V3RL

A1	INDEX	DATE	REVISIONS	DRAWN	CHECKED	PASSED
	A	10-02-2020	Builders Issue	K Brady	A Dahn-Harvey	A Thurston

DRAWN	K Brady	10-02-2020
CHECKED	A Dahn-Harvey	10-02-2020
PASSED	A Thurston	10-02-2020
INITIALS		DATE

WOLTER consulting group
 Planning Urban Design Landscape Environment Surveying
 Brisbane: Level 2, 1 Breakfast Ck Road, Newstead, QLD 4006 Phone: (07) 3666 5200

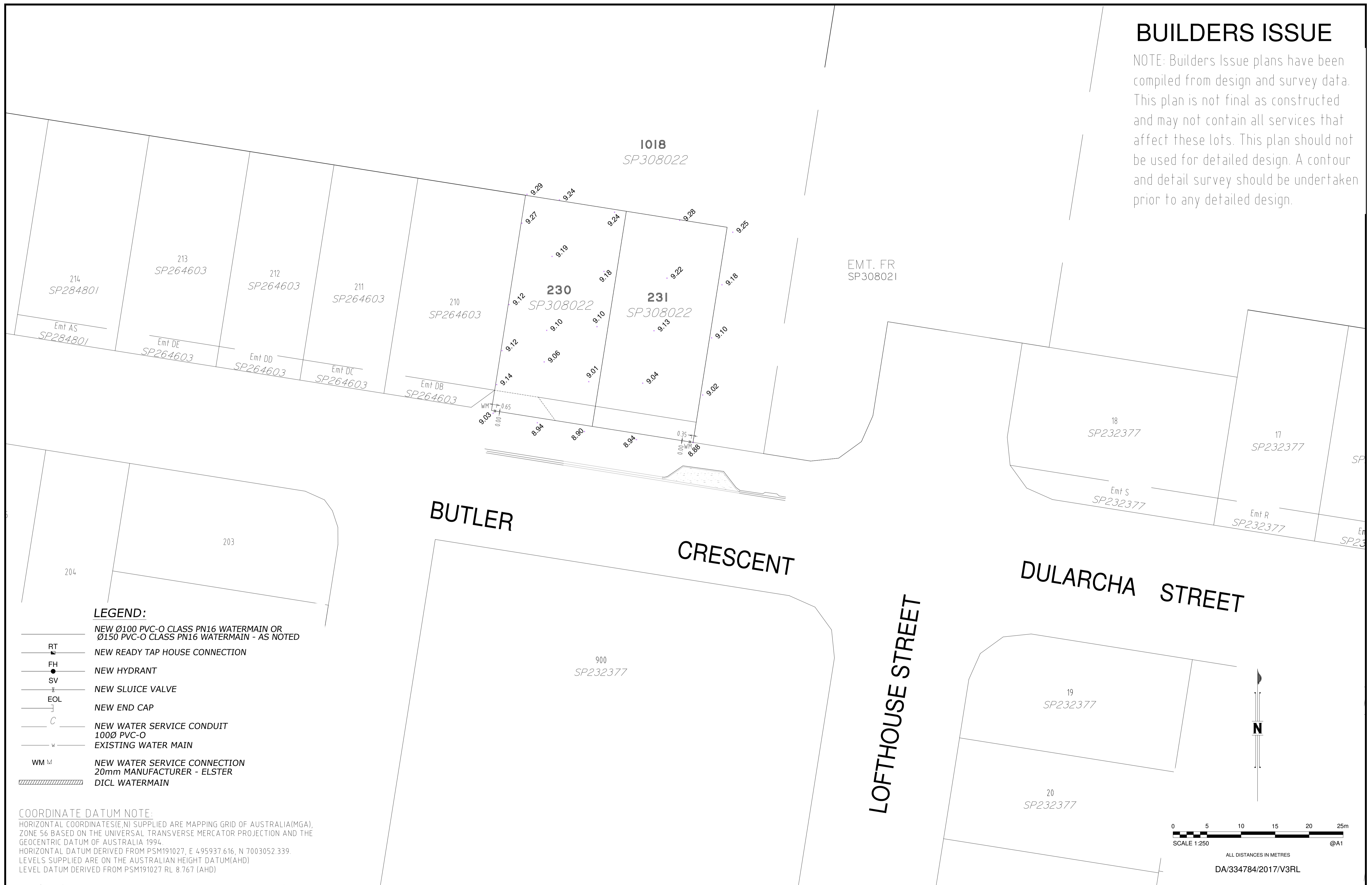


Unitywater
 SB3594/4C
 RIVERBANK ESTATE STAGE 4C
 AS CONSTRUCTED
 SEWER RETICULATION

SHEET 1 OF 2 SHEETS	SCALE 250
REVISION DATE 10-02-2020	REVISION A
DISCIPLINE CODE C	
DRAWING NO. U-	

BUILDERS ISSUE

NOTE: Builders Issue plans have been compiled from design and survey data. This plan is not final as constructed and may not contain all services that affect these lots. This plan should not be used for detailed design. A contour and detail survey should be undertaken prior to any detailed design.

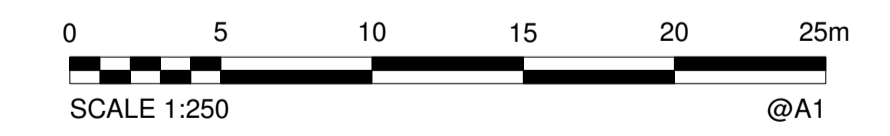


LEGEND:

- NEW Ø100 PVC-O CLASS PN16 WATERMAIN OR Ø150 PVC-O CLASS PN16 WATERMAIN - AS NOTED
- NEW READY TAP HOUSE CONNECTION
- NEW HYDRANT
- NEW SLUICE VALVE
- NEW END CAP
- NEW WATER SERVICE CONDUIT 100Ø PVC-O
- EXISTING WATER MAIN
- NEW WATER SERVICE CONNECTION 20mm MANUFACTURER - ELSTER
- DI CL WATERMAIN

COORDINATE DATUM NOTE:

HORIZONTAL COORDINATES (E, N) SUPPLIED ARE MAPPING GRID OF AUSTRALIA (MGA), ZONE 56 BASED ON THE UNIVERSAL TRANSVERSE MERCATOR PROJECTION AND THE GEOCENTRIC DATUM OF AUSTRALIA 1994.
 HORIZONTAL DATUM DERIVED FROM PSM191027, E 495937.616, N 7003052.339.
 LEVELS SUPPLIED ARE ON THE AUSTRALIAN HEIGHT DATUM (AHD).
 LEVEL DATUM DERIVED FROM PSM191027 RL 8.767 (AHD)



ALL DISTANCES IN METRES
 DA/334784/2017/V3RL

A1	INDEX	DATE	REVISIONS	DRAWN	CHECKED	PASSED
	A	10-02-2020	Builders Issue	K Brady	A Dahn-Harvey	A Thurston

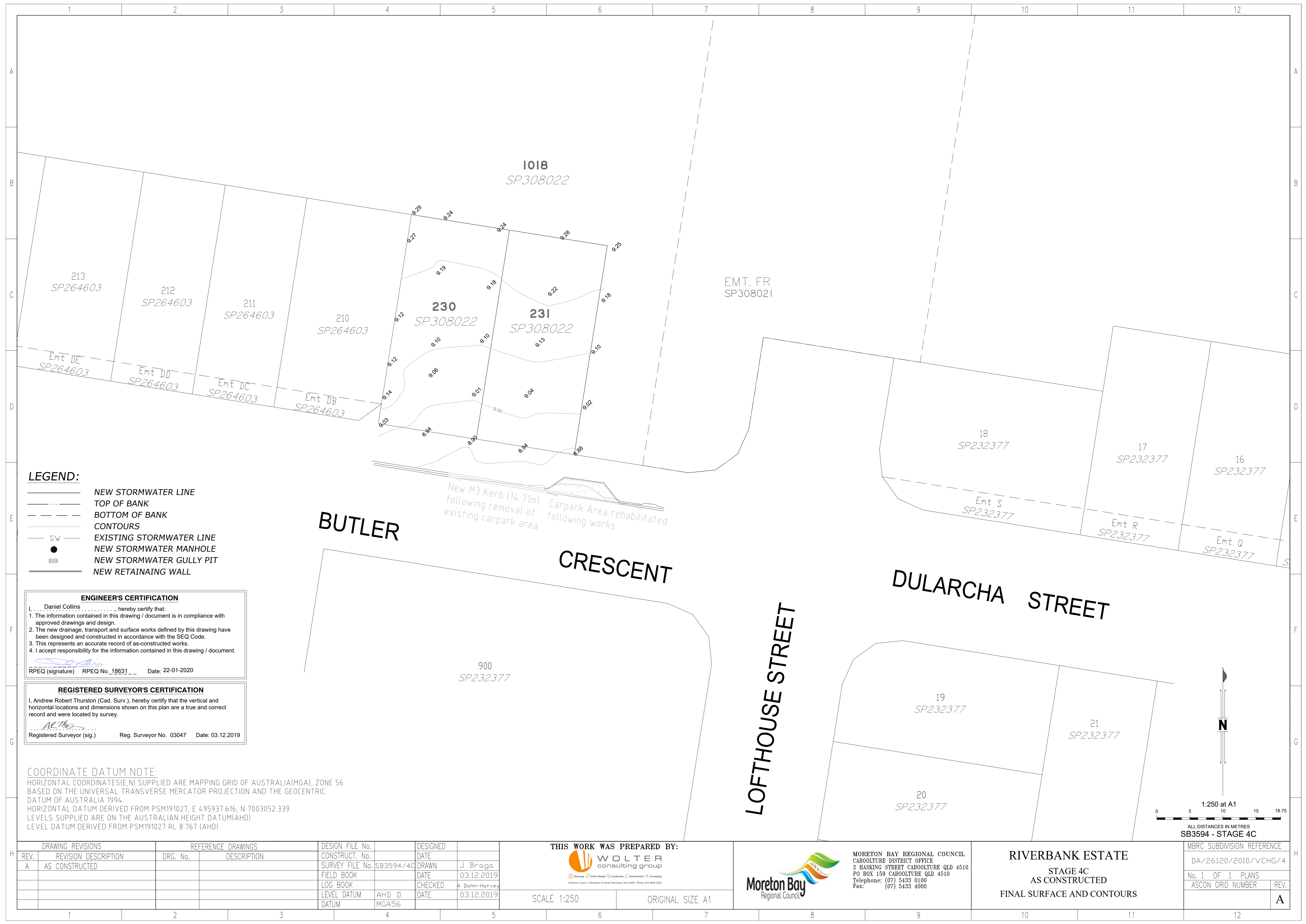
DRAWN	K Brady	10-02-2020
CHECKED	A Dahn-Harvey	10-02-2020
PASSED	A Thurston	10-02-2020
INITIALS		DATE

WOLTER consulting group
 Planning Urban Design Landscape Environment Surveying
 Brisbane: Level 2, 1 Breakfast Ck Road, Newstead, QLD 4006 Phone: (07) 3666 5200



Unitywater
 SB3594/4C
 RIVERBANK ESTATE STAGE 4C
 AS CONSTRUCTED
 WATER RETICULATION

SHEET 3 OF 4 SHEETS	SCALE 250
REVISION DATE 10-02-2020	REVISION A
DISCIPLINE CODE C	
DRAWING NO. U-	

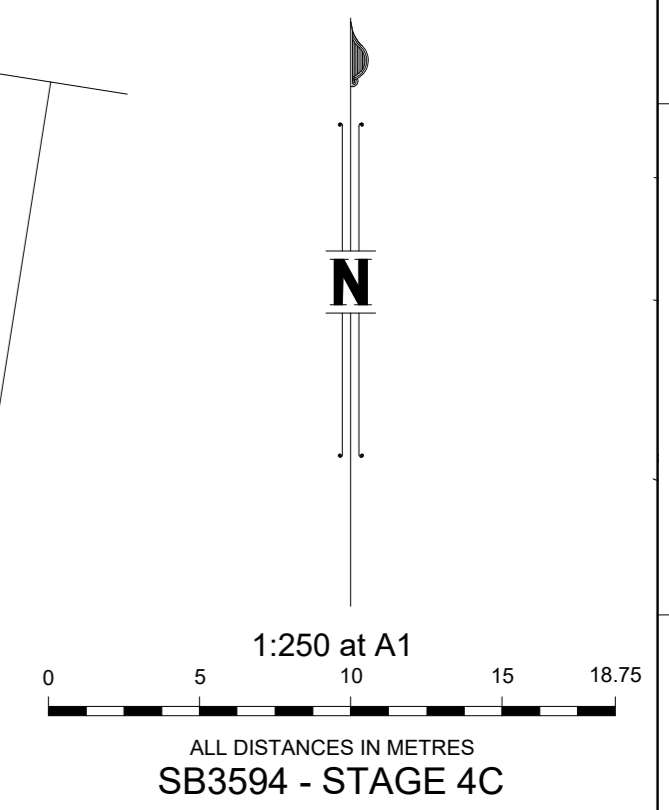


- LEGEND:**
- NEW STORMWATER LINE
 - TOP OF BANK
 - - - BOTTOM OF BANK
 - CONTOURS
 - SW — EXISTING STORMWATER LINE
 - NEW STORMWATER MANHOLE
 - ≡ NEW STORMWATER GULLY PIT
 - NEW RETAINING WALL

ENGINEER'S CERTIFICATION
 I, Daniel Collins, hereby certify that:
 1. The information contained in this drawing / document is in compliance with approved drawings and design.
 2. The new drainage, transport and surface works defined by this drawing have been designed and constructed in accordance with the SEQ Code.
 3. This represents an accurate record of as-constructed works.
 4. I accept responsibility for the information contained in this drawing / document.
 RPEQ (signature) RPEQ No. 18631 Date: 22-01-2020

REGISTERED SURVEYOR'S CERTIFICATION
 I, Andrew Robert Thurston (Cad. Surv.), hereby certify that the vertical and horizontal locations and dimensions shown on this plan are a true and correct record and were located by survey.
 Registered Surveyor (sig.) Reg. Surveyor No. 03047 Date: 03.12.2019

COORDINATE DATUM NOTE:
 HORIZONTAL COORDINATES (E,N) SUPPLIED ARE MAPPING GRID OF AUSTRALIA (MGA), ZONE 56 BASED ON THE UNIVERSAL TRANSVERSE MERCATOR PROJECTION AND THE GEOCENTRIC DATUM OF AUSTRALIA 1994.
 HORIZONTAL DATUM DERIVED FROM PSM191027, E 4 95937.616, N 7003052.339.
 LEVELS SUPPLIED ARE ON THE AUSTRALIAN HEIGHT DATUM (AHD)
 LEVEL DATUM DERIVED FROM PSM191027 RL 8.767 (AHD)



DRAWING REVISIONS		REFERENCE DRAWINGS		DESIGN FILE No.	DESIGNED
REV.	REVISION DESCRIPTION	DRG. No.	DESCRIPTION	CONSTRUCT. No.	DATE
A	AS CONSTRUCTED			SB3594/4C	J Braga
				FIELD BOOK	03.12.2019
				LOG BOOK	A Dahn-Harvey
				LEVEL DATUM	03.12.2019
				AHD ID	
				MGA56	

THIS WORK WAS PREPARED BY:

 WOLTER consulting group
 SCALE 1:250 ORIGINAL SIZE A1

MORETON BAY REGIONAL COUNCIL
 CABOOLTURE DISTRICT OFFICE
 2 HASKING STREET CABOOLTURE QLD 4510
 PO BOX 159 CABOOLTURE QLD 4510
 Telephone: (07) 5433 0100
 Fax: (07) 5433 4000

RIVERBANK ESTATE
 STAGE 4C
 AS CONSTRUCTED
 FINAL SURFACE AND CONTOURS

MBRC SUBDIVISION REFERENCE	
DA/26120/2010/VCHG/4	
No. 1 OF 1 PLANS	
ASCAN GRID NUMBER	REV.
	A