

COORDINATE DATUM NOTE:

HORIZONTAL COORDINATES (E,N) SUPPLIED ARE MAPPING GRID OF AUSTRALIA (MGA), ZONE 56 BASED ON THE UNIVERSAL TRANSVERSE MERCATOR PROJECTION AND THE GEOCENTRIC DATUM OF AUSTRALIA 1994.
 HORIZONTAL DATUM DERIVED FROM PSM191027, E 495937.616, N 7003052.339.
 LEVELS SUPPLIED ARE ON THE AUSTRALIAN HEIGHT DATUM (AHD)
 LEVEL DATUM DERIVED FROM PSM191027 RL 8.767 (AHD)

LEGEND:

- NEW STORMWATER LINE
- TOP OF BANK
- BOTTOM OF BANK
- CONTOURS
- EXISTING STORMWATER LINE
- NEW STORMWATER MANHOLE
- NEW STORMWATER GULLY PIT
- NEW RETAINING WALL

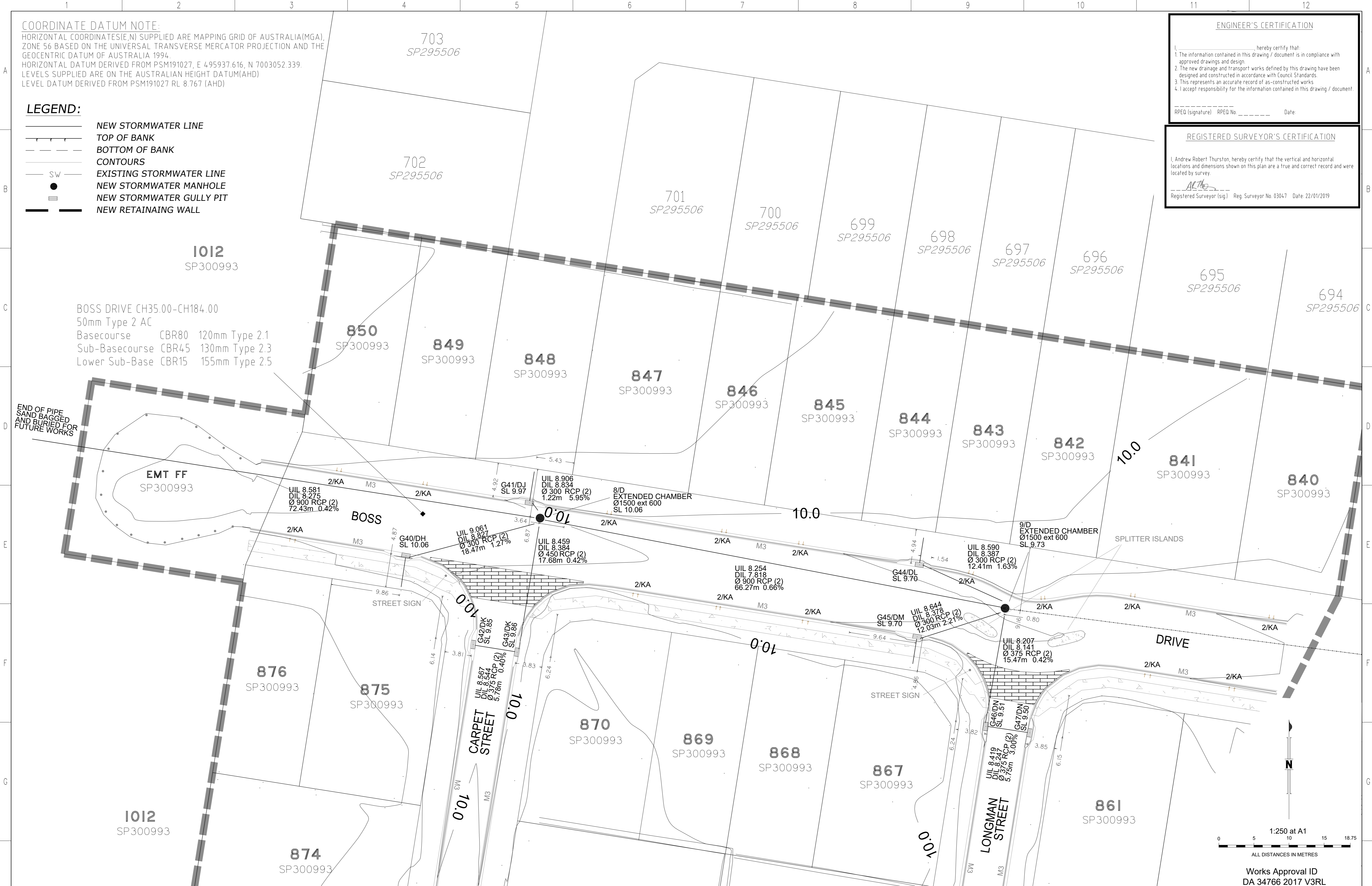
ENGINEER'S CERTIFICATION
 I, _____, hereby certify that:
 1. The information contained in this drawing / document is in compliance with approved drawings and design.
 2. The new drainage and transport works defined by this drawing have been designed and constructed in accordance with Council Standards.
 3. This represents an accurate record of as-constructed works.
 4. I accept responsibility for the information contained in this drawing / document.
 RPEQ (Signature) RPEQ No. _____ Date: _____

REGISTERED SURVEYOR'S CERTIFICATION
 I, Andrew Robert Thurston, hereby certify that the vertical and horizontal locations and dimensions shown on this plan are a true and correct record and were located by survey.

 Registered Surveyor (Sig) Reg. Surveyor No. 03047 Date: 22/01/2019

BOSS DRIVE CH35.00-CH184.00
 50mm Type 2 AC
 Basecourse CBR80 120mm Type 2.1
 Sub-Basecourse CBR45 130mm Type 2.3
 Lower Sub-Base CBR15 155mm Type 2.5

END OF PIPE SAND BAGGED AND BURIED FOR FUTURE WORKS



DRAWING REVISIONS		REFERENCE DRAWINGS		DESIGN FILE No.	DESIGNED
REV.	REVISION DESCRIPTION	DRG. No.	DESCRIPTION	CONSTRUCT. No.	DATE
A	PRELIMINARY				J Braga
B	AS CONSTRUCTED				22.01.2019
					A Dahn-Harvey
					22.01.2019
				AHD	
				PM191027	

THIS WORK WAS PREPARED BY:
WOLTER CONSULTING GROUP
 SCALE 1:250 ORIGINAL SIZE A1

MORETON BAY REGIONAL COUNCIL
 CABOOLTURE DISTRICT OFFICE
 2 HASKING STREET CABOOLTURE QLD 4510
 PO BOX 159 CABOOLTURE QLD 4510
 Telephone: (07) 5433 0100
 Fax: (07) 5433 4000

RIVERBANK
 STAGE 7B
 AS CONSTRUCTED
 ROADS AND DRAINAGE

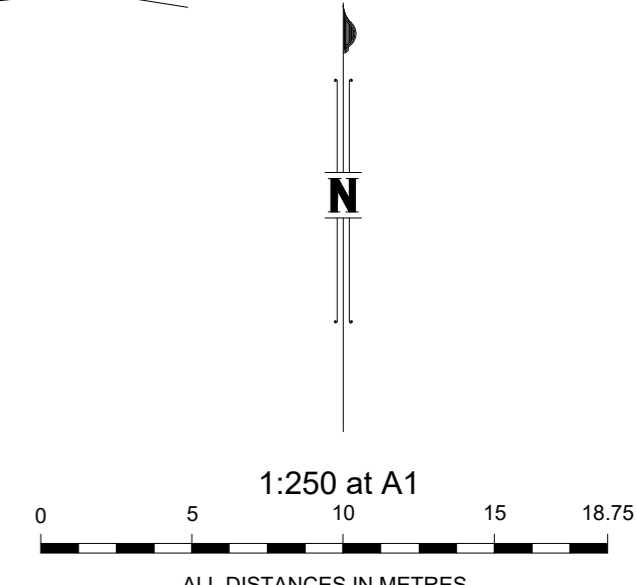
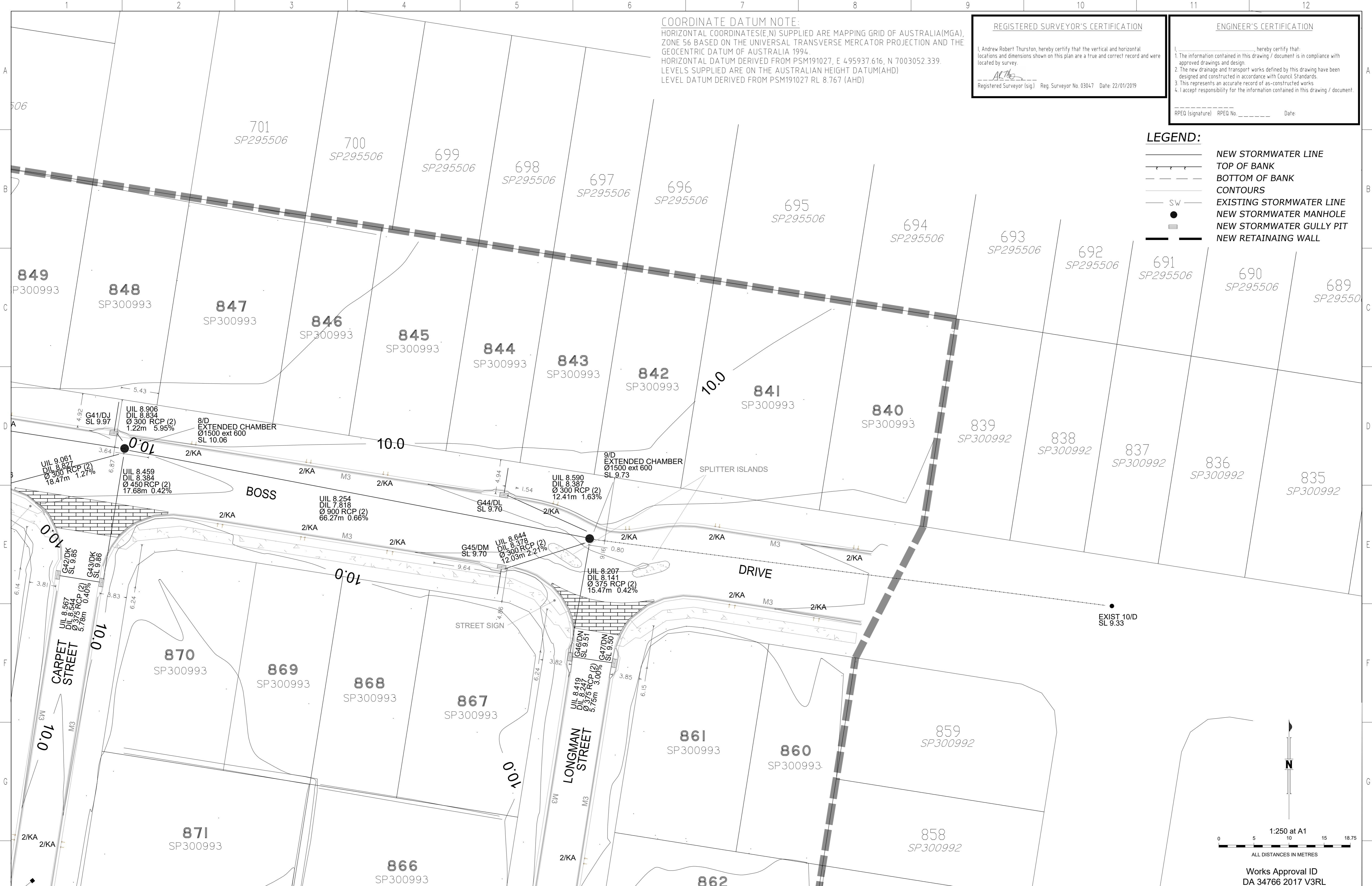
Works Approval ID
 DA 34766 2017 V3RL
 SUBDIVISION REFERENCE
 DA/34766/2017/V3RL
 No. 1 OF 3 PLANS
 ASCON GRID NUMBER
 REV. B

COORDINATE DATUM NOTE:
 HORIZONTAL COORDINATES (E, N) SUPPLIED ARE MAPPING GRID OF AUSTRALIA (MGA), ZONE 56 BASED ON THE UNIVERSAL TRANSVERSE MERCATOR PROJECTION AND THE GEOCENTRIC DATUM OF AUSTRALIA 1994.
 HORIZONTAL DATUM DERIVED FROM PSM191027, E 495937.616, N 7003052.339.
 LEVELS SUPPLIED ARE ON THE AUSTRALIAN HEIGHT DATUM (AHD).
 LEVEL DATUM DERIVED FROM PSM191027 RL 8.767 (AHD)

REGISTERED SURVEYOR'S CERTIFICATION
 I, Andrew Robert Thurston, hereby certify that the vertical and horizontal locations and dimensions shown on this plan are a true and correct record and were located by survey.
 Registered Surveyor (sig) _____ Reg. Surveyor No. 03047 Date: 22/01/2019

ENGINEER'S CERTIFICATION
 I, _____, hereby certify that:
 1. The information contained in this drawing / document is in compliance with approved drawings and design.
 2. The new drainage and transport works defined by this drawing have been designed and constructed in accordance with Council Standards.
 3. This represents an accurate record of as-constructed works.
 4. I accept responsibility for the information contained in this drawing / document.
 RPEQ (signature) _____ RPEQ No. _____ Date: _____

- LEGEND:**
- NEW STORMWATER LINE
 - TOP OF BANK
 - BOTTOM OF BANK
 - CONTOURS
 - SW — EXISTING STORMWATER LINE
 - NEW STORMWATER MANHOLE
 - NEW STORMWATER GULLY PIT
 - NEW RETAINING WALL



Works Approval ID
 DA 34766 2017 V3RL

DRAWING REVISIONS		REFERENCE DRAWINGS		DESIGN FILE No.		DESIGNED	
REV.	REVISION DESCRIPTION	DRG. No.	DESCRIPTION	CONSTRUCT. No.	Ref	DATE	
A	PRELIMINARY					22.01.2019	J Braga
B	AS CONSTRUCTED					22.01.2019	A Dahn-Harvey

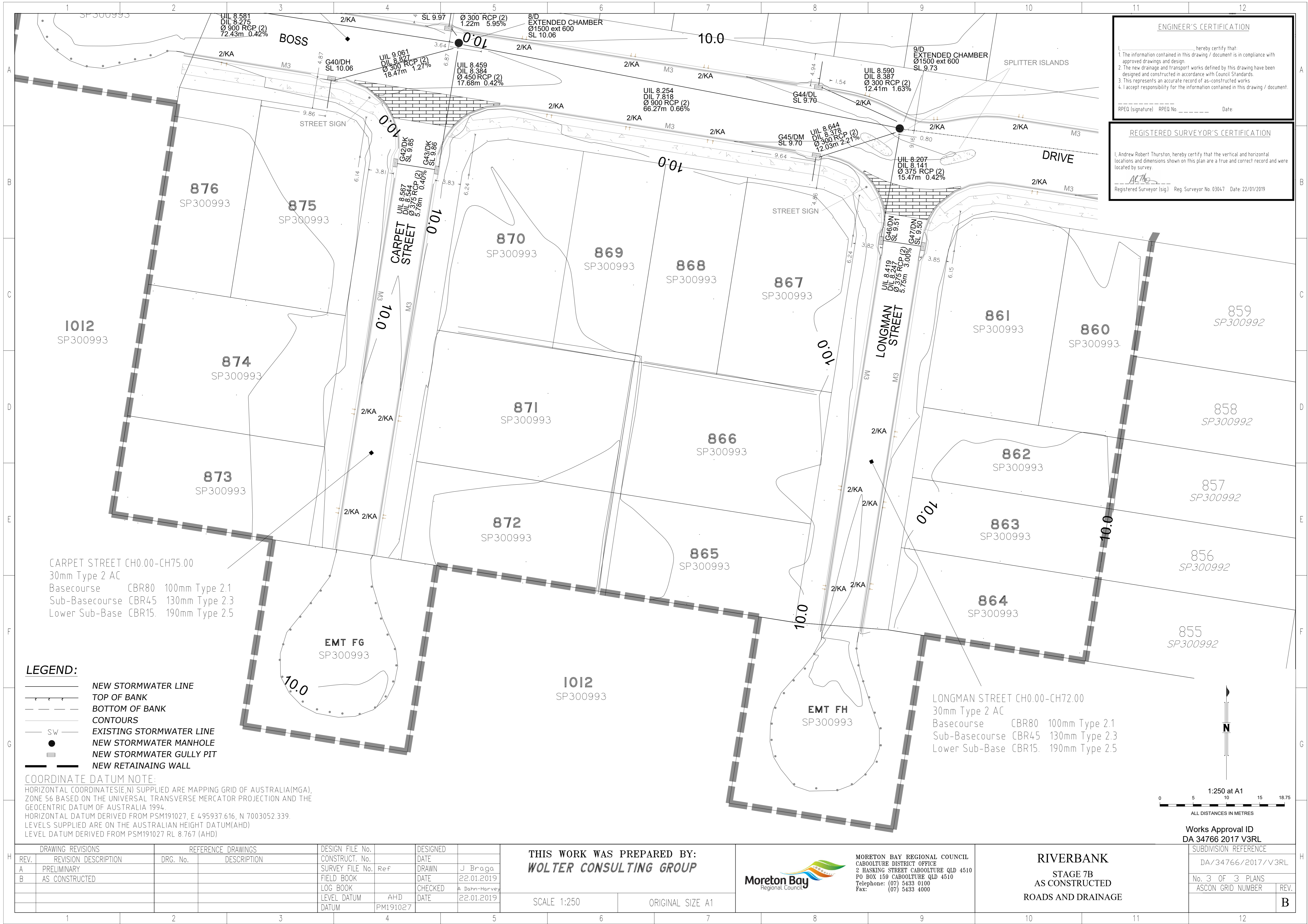
THIS WORK WAS PREPARED BY:
WOLTER CONSULTING GROUP

SCALE 1:250 ORIGINAL SIZE A1

MORETON BAY REGIONAL COUNCIL
 CABOOLTURE DISTRICT OFFICE
 2 HASKING STREET CABOOLTURE QLD 4510
 PO BOX 159 CABOOLTURE QLD 4510
 Telephone: (07) 5433 0100
 Fax: (07) 5433 4000

RIVERBANK
 STAGE 7B
 AS CONSTRUCTED
 ROADS AND DRAINAGE

SUBDIVISION REFERENCE	
DA/34766/2017/V3RL	
No. 2 OF 3 PLANS	
ASCON GRID NUMBER	REV.
	B



ENGINEER'S CERTIFICATION

I, _____, hereby certify that:

- The information contained in this drawing / document is in compliance with approved drawings and design.
- The new drainage and transport works defined by this drawing have been designed and constructed in accordance with Council Standards.
- This represents an accurate record of as-constructed works.
- I accept responsibility for the information contained in this drawing / document.

RPEQ (signature) RPEQ No. _____ Date _____

REGISTERED SURVEYOR'S CERTIFICATION

I, Andrew Robert Thurston, hereby certify that the vertical and horizontal locations and dimensions shown on this plan are a true and correct record and were located by survey.

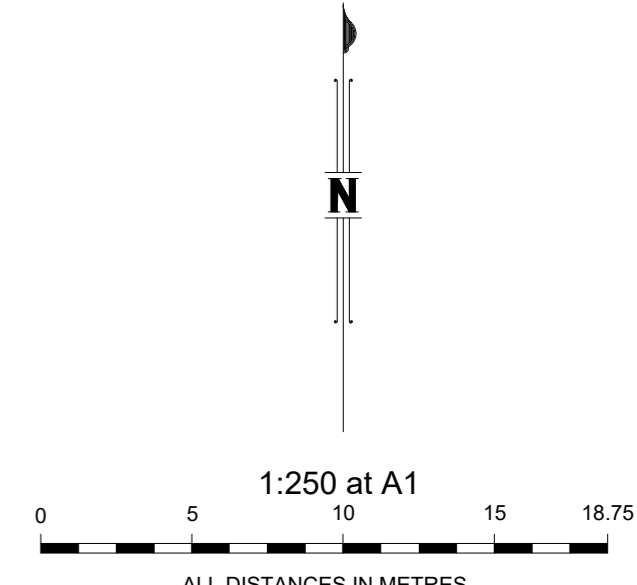
ATG
Registered Surveyor (sig) Reg. Surveyor No. 03047 Date: 22/01/2019

CARPET STREET CH0.00-CH75.00
30mm Type 2 AC
Basecourse CBR80 100mm Type 2.1
Sub-Basecourse CBR45 130mm Type 2.3
Lower Sub-Base CBR15 190mm Type 2.5

LONGMAN STREET CH0.00-CH72.00
30mm Type 2 AC
Basecourse CBR80 100mm Type 2.1
Sub-Basecourse CBR45 130mm Type 2.3
Lower Sub-Base CBR15 190mm Type 2.5

- LEGEND:**
- NEW STORMWATER LINE
 - TOP OF BANK
 - BOTTOM OF BANK
 - CONTOURS
 - EXISTING STORMWATER LINE
 - NEW STORMWATER MANHOLE
 - NEW STORMWATER GULLY PIT
 - NEW RETAINING WALL

COORDINATE DATUM NOTE:
HORIZONTAL COORDINATES(E,N) SUPPLIED ARE MAPPING GRID OF AUSTRALIA(MGA), ZONE 56 BASED ON THE UNIVERSAL TRANSVERSE MERCATOR PROJECTION AND THE GEOCENTRIC DATUM OF AUSTRALIA 1994.
HORIZONTAL DATUM DERIVED FROM PSM191027, E 495937.616, N 7003052.339.
LEVELS SUPPLIED ARE ON THE AUSTRALIAN HEIGHT DATUM(AHD)
LEVEL DATUM DERIVED FROM PSM191027 RL 8.767 (AHD)



DRAWING REVISIONS		REFERENCE DRAWINGS		DESIGN FILE No.	DESIGNED
REV.	REVISION DESCRIPTION	DRG. No.	DESCRIPTION	CONSTRUCT. No.	DATE
A	PRELIMINARY				J Braga
B	AS CONSTRUCTED				22.01.2019
				LOG BOOK	A Dahn-Harvey
				LEVEL DATUM	22.01.2019
				DATUM	PM191027

THIS WORK WAS PREPARED BY:
WOLTER CONSULTING GROUP

SCALE 1:250 ORIGINAL SIZE A1



MORETON BAY REGIONAL COUNCIL
CABOOLTURE DISTRICT OFFICE
2 HASKING STREET CABOOLTURE QLD 4510
PO BOX 159 CABOOLTURE QLD 4510
Telephone: (07) 5433 0100
Fax: (07) 5433 4000

RIVERBANK
STAGE 7B
AS CONSTRUCTED
ROADS AND DRAINAGE

Works Approval ID
DA 34766 2017 V3RL

SUBDIVISION REFERENCE	
DA/34766/2017/V3RL	
No. 3 OF 3 PLANS	
ASCON GRID NUMBER	REV.
	B



ENGINEER'S CERTIFICATION
 I, _____, hereby certify that:
 1. The information contained in this drawing / document is in compliance with approved drawings and design.
 2. The new drainage and transport works defined by this drawing have been designed and constructed in accordance with Council Standards.
 3. This represents an accurate record of as-constructed works.
 4. I accept responsibility for the information contained in this drawing / document.
 RPEQ (signature) RPEQ No. _____ Date: _____

REGISTERED SURVEYOR'S CERTIFICATION
 I, Andrew Robert Thurston, hereby certify that the vertical and horizontal locations and dimensions shown on this plan are a true and correct record and were located by survey.

 Registered Surveyor (sig) Reg. Surveyor No. 03047 Date: 22/01/2019

DRAWING REVISIONS		REFERENCE DRAWINGS		DESIGN FILE No.	DESIGNED
REV.	REVISION DESCRIPTION	DRG. No.	DESCRIPTION	CONSTRUCT. No.	DATE
A	PRELIMINARY				J Braga
B	AS CONSTRUCTED				22.01.2019
				LOG BOOK	CHECKED A Dahn-Harvey
				LEVEL DATUM	DATE 22.01.2019
				DATUM	PM191027

THIS WORK WAS PREPARED BY:
WOLTER CONSULTING GROUP
 SCALE 1:250 ORIGINAL SIZE A1

Moreton Bay Regional Council
 MORETON BAY REGIONAL COUNCIL
 CABOOLTURE DISTRICT OFFICE
 2 HASKING STREET CABOOLTURE QLD 4510
 PO BOX 159 CABOOLTURE QLD 4510
 Telephone: (07) 5433 0100
 Fax: (07) 5433 4000

RIVERBANK
 STAGE 7B
 AS CONSTRUCTED
 LANDSCAPE

Works Approval ID
 DA 34766 2017 V4LE 1
 SUBDIVISION REFERENCE
 DA/34766/2017/V4LE/1
 No. 1 OF 1 PLANS
 ASCON GRID NUMBER REV.
 B

PSM 191027
 E: 495937.616
 N: 7003052.339
 RL: 8.767m

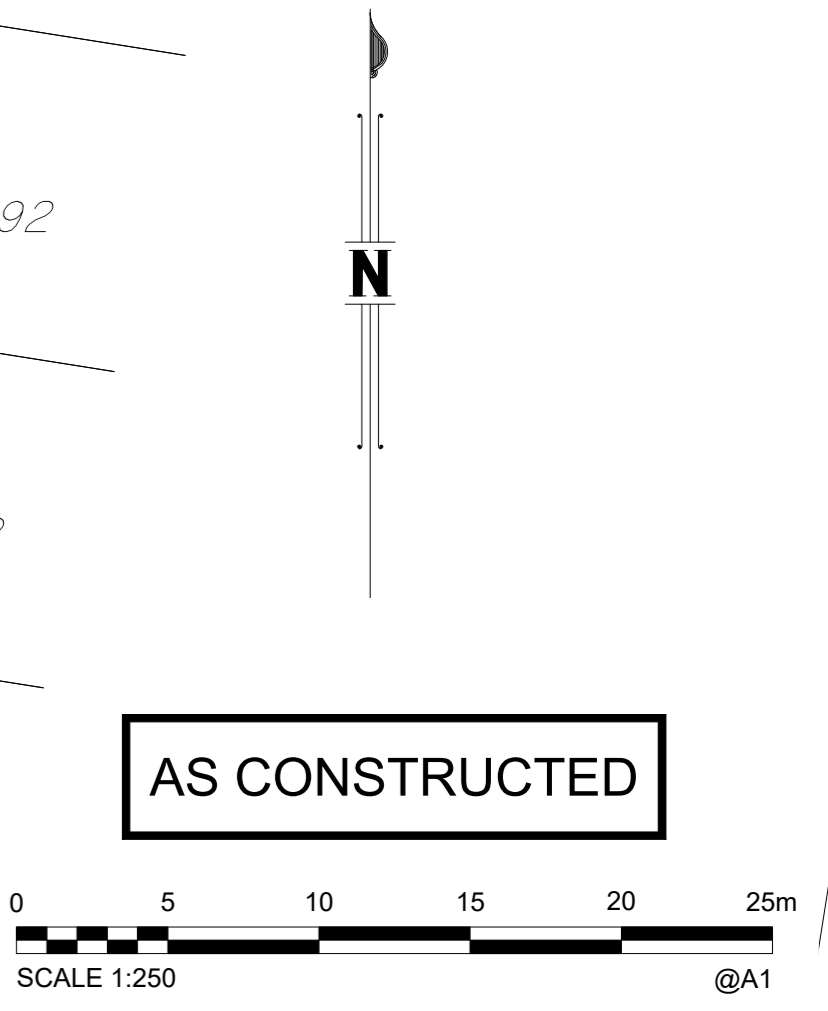
COORDINATE DATUM NOTE:
 HORIZONTAL COORDINATES(E,N) SUPPLIED ARE MAPPING GRID OF AUSTRALIA(MGA), ZONE 56 BASED ON THE UNIVERSAL TRANSVERSE MERCATOR PROJECTION AND THE GEOCENTRIC DATUM OF AUSTRALIA 1994.
 HORIZONTAL DATUM DERIVED FROM PSM191027, E 495937.616, N 7003052.339.
 LEVELS SUPPLIED ARE ON THE AUSTRALIAN HEIGHT DATUM(AHD).
 LEVEL DATUM DERIVED FROM PSM191027 RL 8.767 (AHD)

REGISTERED SURVEYOR'S CERTIFICATION
 I, Andrew Robert Thurston, hereby certify that the vertical and horizontal locations and dimensions shown on this plan are a true and correct record and were located by survey.
 Registered Surveyor (Sig) *AT* Reg. Surveyor No. 03047 Date: 22/01/2019

ENGINEER'S CERTIFICATION
 I, _____, hereby certify that:
 1. The information contained in this drawing / document is in compliance with approved drawings and design.
 2. The new water and sewerage works defined by this drawing have been designed and constructed in accordance with the SEQ Code.
 3. This represents an accurate record of as-constructed works.
 4. I accept responsibility for the information contained in this drawing / document.
 RPEQ (signature) RPEQ No. _____ Date: _____



- LEGEND:**
- RT NEW Ø100 PVC-O CLASS PN16 WATERMAIN
 - FH NEW READY TAP HOUSE CONNECTION
 - NEW HYDRANT
 - DFH NEW DUCKFOOT HYDRANT
 - SV NEW SLUICE VALVE
 - EOL NEW END CAP
 - C NEW WATER SERVICE CONDUIT 100Ø PVC-O
 - w EXISTING WATER MAIN
 - WM NEW WATER SERVICE CONNECTION
 - DIagonal hatching DIACL WATERMAIN



AS CONSTRUCTED

Works Approval ID
 2017 011 038 (7B)

A1	B	22/01/2019	AS CONSTRUCTED	J Braga	A Dahn-Harvey	A Thurston	DRAWN	J Braga	22/01/2019
	A	18/01/2019	PRELIMINARY	J Braga	A Dahn-Harvey	A Thurston	CHECKED	A Dahn-Harvey	22/01/2019
				J Braga	A Dahn-Harvey	A Thurston	PASSED	A Thurston	22/01/2019
	INDEX	DATE	REVISIONS	DRAWN	CHECKED	PASSED	INITIALS	DATE	

WOLTER consulting group
 Planning Urban Design Landscape Environment Surveying
 Brisbane: Level 2, 1 Breakfast Ck Road, Newstead, QLD 4006 Phone: (07) 3666 5200



Unitywater
 2017011038 7B
 RIVERBANK ESTATE, STAGE 7B
 Cnr Dohles Rocks Road & Wagner Road, Griffin
 AS CONSTRUCTED WATER RETICULATION

SHEET 1 OF 1 SHEETS	SCALE 250
REVISION DATE	REVISION B
DISCIPLINE CODE C	
DRAWING NO. U-2018-0838	

PSM 191027
E: 495937.616
N: 7003052.339
RL: 8.767m

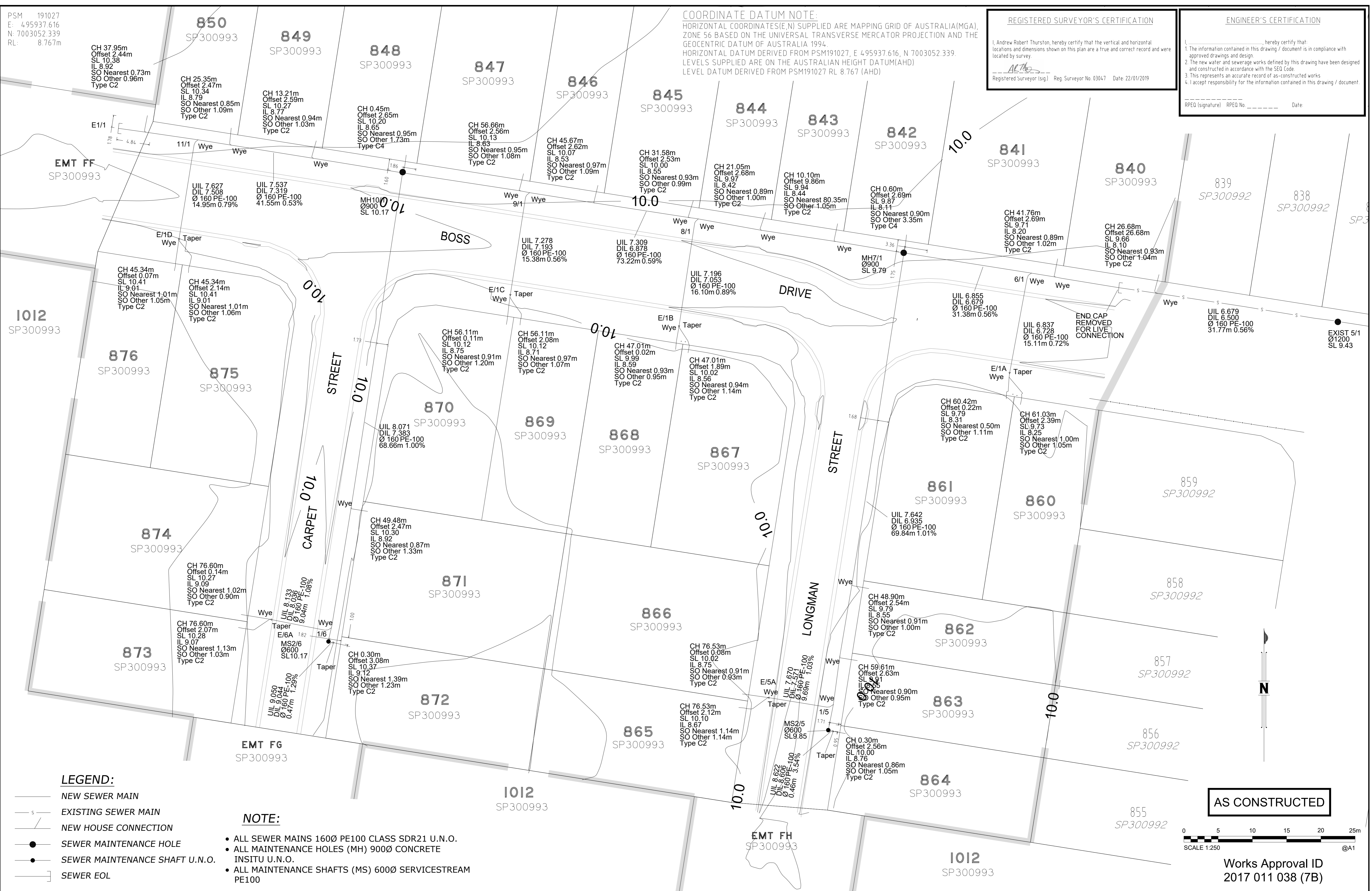
COORDINATE DATUM NOTE:
HORIZONTAL COORDINATES (E,N) SUPPLIED ARE MAPPING GRID OF AUSTRALIA (MGA), ZONE 56 BASED ON THE UNIVERSAL TRANSVERSE MERCATOR PROJECTION AND THE GEOCENTRIC DATUM OF AUSTRALIA 1994.
HORIZONTAL DATUM DERIVED FROM PSM191027, E 495937.616, N 7003052.339.
LEVELS SUPPLIED ARE ON THE AUSTRALIAN HEIGHT DATUM (AHD).
LEVEL DATUM DERIVED FROM PSM191027 RL 8.767 (AHD)

REGISTERED SURVEYOR'S CERTIFICATION

I, Andrew Robert Thurston, hereby certify that the vertical and horizontal locations and dimensions shown on this plan are a true and correct record and were located by survey.
ATL
Registered Surveyor (sig) Reg. Surveyor No. 03047 Date: 22/01/2019

ENGINEER'S CERTIFICATION

..... hereby certify that:
1. The information contained in this drawing / document is in compliance with approved drawings and design.
2. The new water and sewerage works defined by this drawing have been designed and constructed in accordance with the SEQ Code.
3. This represents an accurate record of as-constructed works.
4. I accept responsibility for the information contained in this drawing / document.
RPED (signature) RPED No. _____ Date: _____



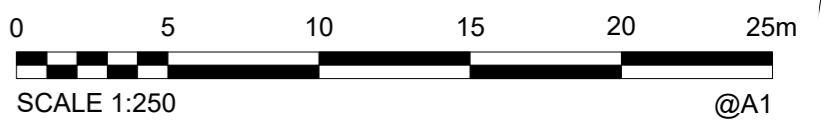
LEGEND:

- NEW SEWER MAIN
- s- EXISTING SEWER MAIN
- / NEW HOUSE CONNECTION
- SEWER MAINTENANCE HOLE
- SEWER MAINTENANCE SHAFT U.N.O.
-] SEWER EOL

NOTE:

- ALL SEWER MAINS 160Ø PE100 CLASS SDR21 U.N.O.
- ALL MAINTENANCE HOLES (MH) 900Ø CONCRETE INSITU U.N.O.
- ALL MAINTENANCE SHAFTS (MS) 600Ø SERVICESTREAM PE100

AS CONSTRUCTED



Works Approval ID
2017 011 038 (7B)

A1	B	22/01/2019	AS CONSTRUCTED	J Braga	A Dahn-Harvey	A Thurston	DRAWN	J Braga	22/01/2019
	A	18/01/2019	PRELIMINARY	J Braga	A Dahn-Harvey	A Thurston	CHECKED	A Dahn-Harvey	22/01/2019
				J Braga	A Dahn-Harvey	A Thurston	PASSED	A Thurston	22/01/2019
	INDEX	DATE	REVISIONS	DRAWN	CHECKED	PASSED	INITIALS	DATE	

WOLTER consulting group
Planning Urban Design Landscape Environment Surveying
Brisbane: Level 2, 1 Breakfast Ck Road, Newstead, QLD 4006 Phone: (07) 3666 5200



Unitywater
2017011038 7B
RIVERBANK ESTATE, STAGE 7B
Cnr Dohles Rocks Road & Wagner Road, Griffin
AS CONSTRUCTED SEWER RETICULATION

SHEET 1 OF 1 SHEETS	SCALE 250
REVISION DATE	REVISION B
DISCIPLINE CODE C	
DRAWING NO. U-2018-0838	