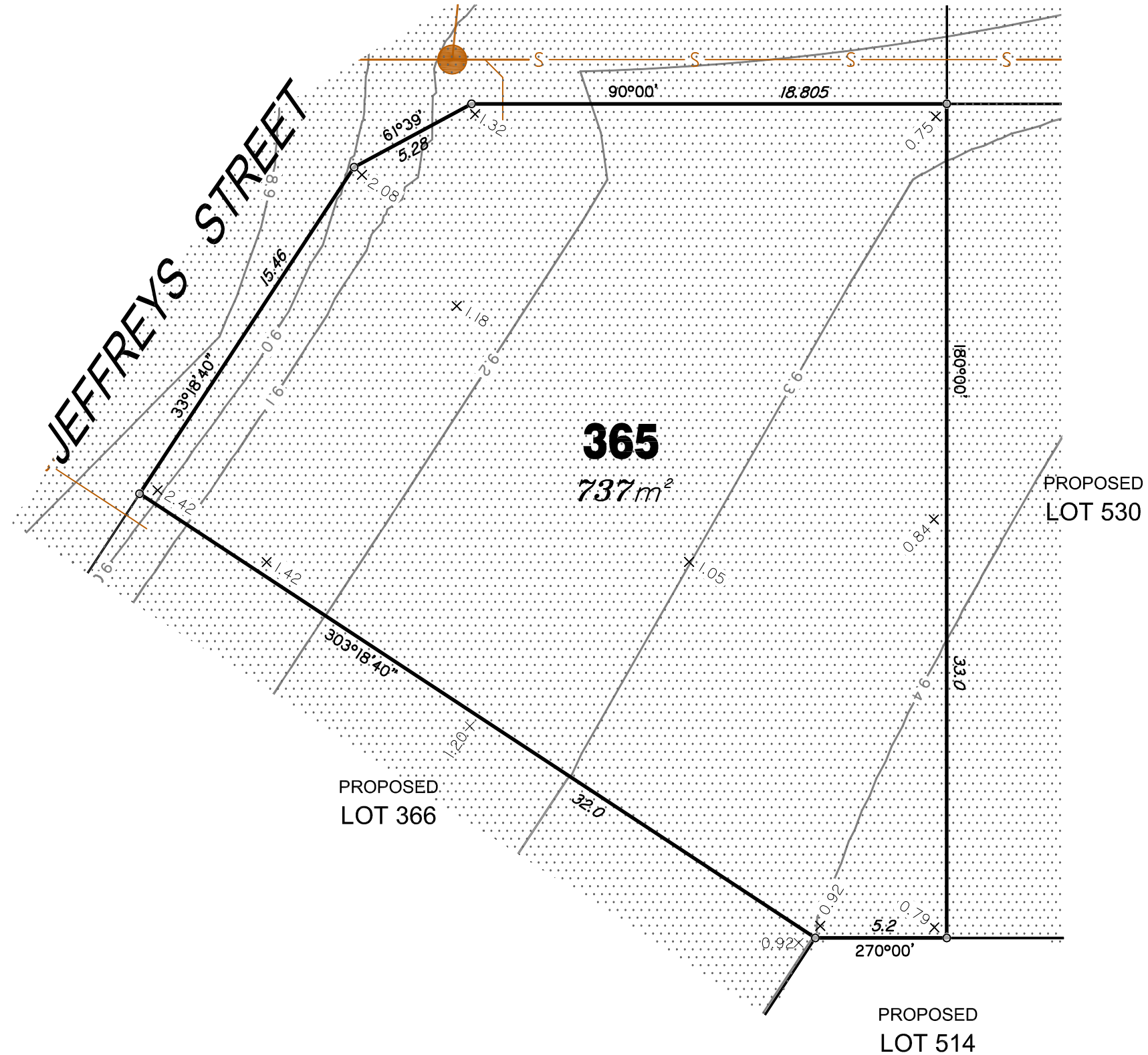


**WATERSIDE ESPLANADE**



**IMPORTANT NOTES:**  
(These notes are an integral part of this plan)  
This plan has been prepared for PEET & CO for the purposes of a Disclosure Plan Under the Land Sales Act 1984 (as Amended).

It is not to be used by any other person or corporation or for any other purposes and is subject to the following limitations:

The Lot dimensions and area shown hereon are subject to final field survey and also to the requirements of Council and any other authority which may have requirements under any relevant legislation.

Design surface contours from the design surface data supplied by Brown Consulting Pty Ltd. Where final surface contours are not shown, no change to existing surface level is proposed.

Compaction of any fill material placed on this site shall be completed under inspection and testing services in accordance with AS3798-2007.

Location of sewer and roofwater lines, manholes and pits are those shown on engineering design drawings and may differ from the as-constructed location.

Copyright © Queensland Surveying Pty Ltd t/a THG Resource Strategists 24/11/2015.

**THESE DESIGNS AND DRAWINGS ARE COPYRIGHT AND ARE NOT TO BE USED OR REPRODUCED WITHOUT THE WRITTEN PERMISSION OF THG**

Data Sources		
Cadastral Boundaries	215809_1_LC1(E).dwg	
Design Surface Contours	20150601_Stage 9 Design Tin.dwg	
Engineering Design	X_813243_BASE_SLAVE.dwg	

No	Revisions	Date	Chkd
C	Amend eastern boundary	24/11/15	EJM
B	Revised to suit new Act	2/12/14	EJM
A	Original	8/9/14	EJM

Locality: CABOOLTURE SOUTH  
Local Authority: M.B.R.C  
Horizontal Meridian: SP232377  
Vertical Level Datum: AHD  
Level Origin: PM109474(RL15.112)  
Scale: 1:200 @ A3  
Surveyed: Queensland Surveying Pty Ltd  
Designed: Calibre  
Drawn: EJM  
Checked: MMR  
Plot Date: 24 Nov, 2015  
Computer File Ref: 215809\_5 DPs(F).dwg

**DISCLOSURE PLAN**  
of Proposed Lot 365  
being part of  
Lot 2 on SP269623



BRISBANE (07) 3666 4700    MACKAY (07) 4951 2911    PROSERPINE (07) 4945 1722  
BOWEN (07) 4786 1050    CAIRNS (07) 4051 6722

Email mail@thg.com.au    www.thg.com.au  
ABN 25 604 671 374  
Queensland Surveying Pty Ltd t/a THG Resource Strategists

Drawing No 30599-DP365    Issue C

**LEGEND**

Final surface contours based on A.H.D. datum at an interval of 0.1m, shown as: — 1.0 —

Where applicable, areas filled from existing surface are shown as:-



Depth of Fill +0.13

Sewer line shown as: — S —

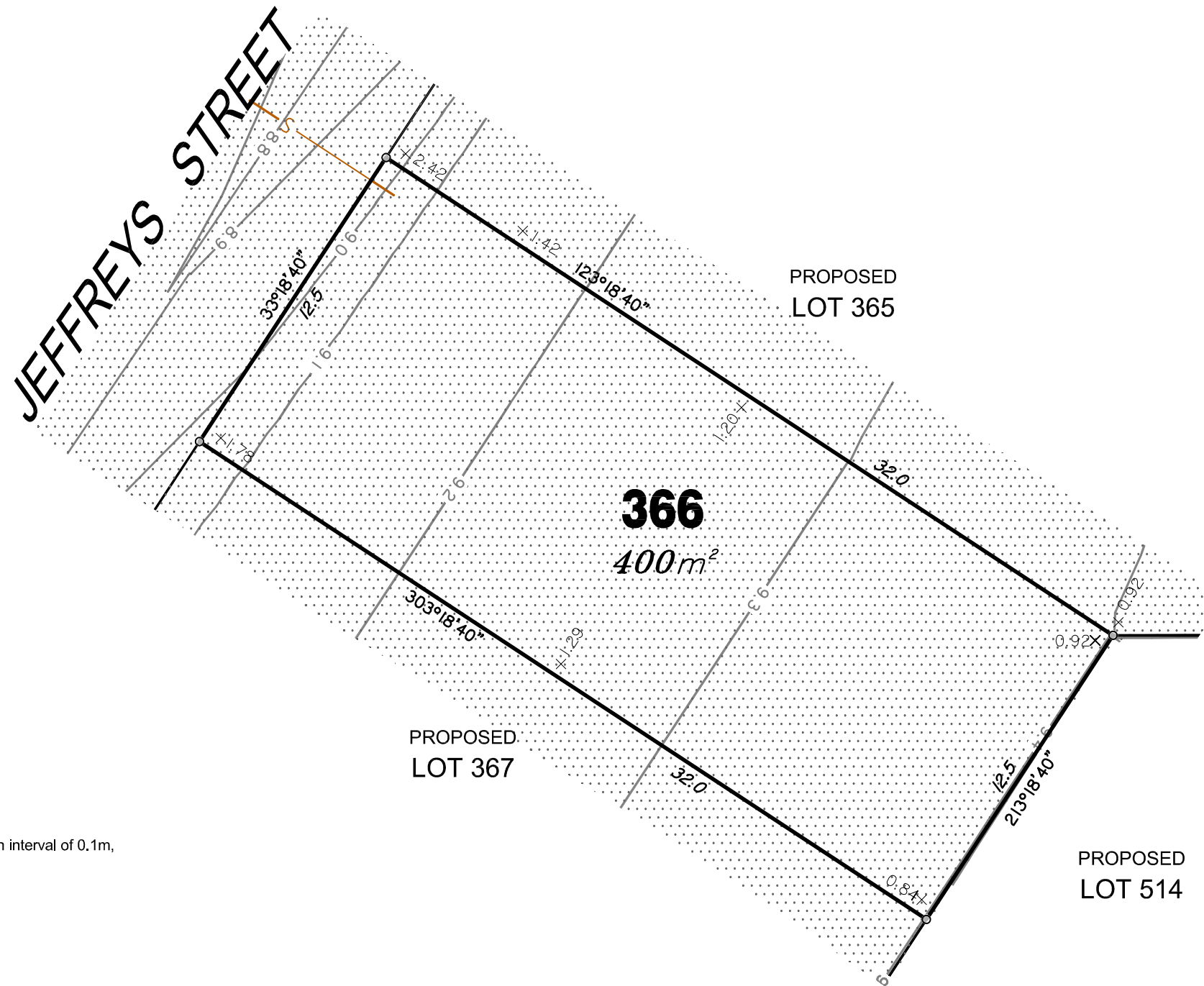
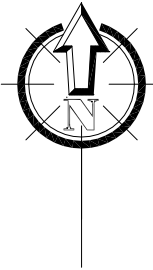
Sewer Manhole/Maintenance Shaft shown as: ●

Roofwater Drainage line shown as: — RWD —

Roofwater Manhole shown as: ●

Roofwater Pit shown as: ■

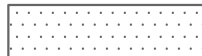




**LEGEND**

Final surface contours based on A.H.D. datum at an interval of 0.1m, shown as: — 1.0 —

Where applicable, areas filled from existing surface are shown as:-



Depth of Fill +0.13

Sewer line shown as: — S —

Sewer Manhole/Maintenance Shaft shown as:

Roofwater Drainage line shown as: — RWD —

Roofwater Manhole shown as:

Roofwater Pit shown as:



**RIVERBANK**

For  
**PEET**

**IMPORTANT NOTES:**  
(These notes are an integral part of this plan)  
This plan has been prepared for PEET & CO for the purposes of A Disclosure Plan Under the Land Sales Act 1984 (as Amended).

It is not to be used by any other person or corporation or for any other purposes and is subject to the following limitations:

The Lot dimensions and area shown herein are subject to final field survey and also to the requirements of Council and any other authority which may have requirements under any relevant legislation.

Design surface contours from the design surface data supplied by Brown Consulting Pty Ltd. Where final surface contours are not shown, no change to existing surface level is proposed.

Compaction of any fill material placed on this site shall be completed under inspection and testing services in accordance with AS3798-2007.

Location of sewer and roofwater lines, manholes and pits are those shown on engineering design drawings and may differ from the as-constructed location.

**THESE DESIGNS AND DRAWINGS ARE COPYRIGHT AND ARE NOT TO BE USED OR REPRODUCED WITHOUT THE WRITTEN PERMISSION OF THG**

**Data Sources**  
Cadastral Boundaries 215809\_1\_LC1(D).dwg  
Design Surface Contours Stage 9 - 12D Design Tin.12da  
Engineering Design X\_806158\_BASE\_MASTER\_2014\_09\_08.dwg

No	Revisions	Date	Chkd
B	Revised to suit new Act	2/12/14	EJM
A	Original	8/9/14	EJM

Parish: CABOOLTURE  
County: STANLEY  
Locality: CABOOLTURE SOUTH  
Local Authority: M.B.R.C  
Horizontal Meridian: SP232377  
Vertical Level Datum: AHD  
Level Origin: PM109474(RL15.112)  
Scale: 1:200 @ A3  
Surveyed: THG WSG Pty Ltd  
Designed: Brown Consulting  
Drawn: EJM  
Checked: MMR  
Plot Date: 03 Dec, 2014  
Computer File Ref: 215809\_5 DPs(B).dwg

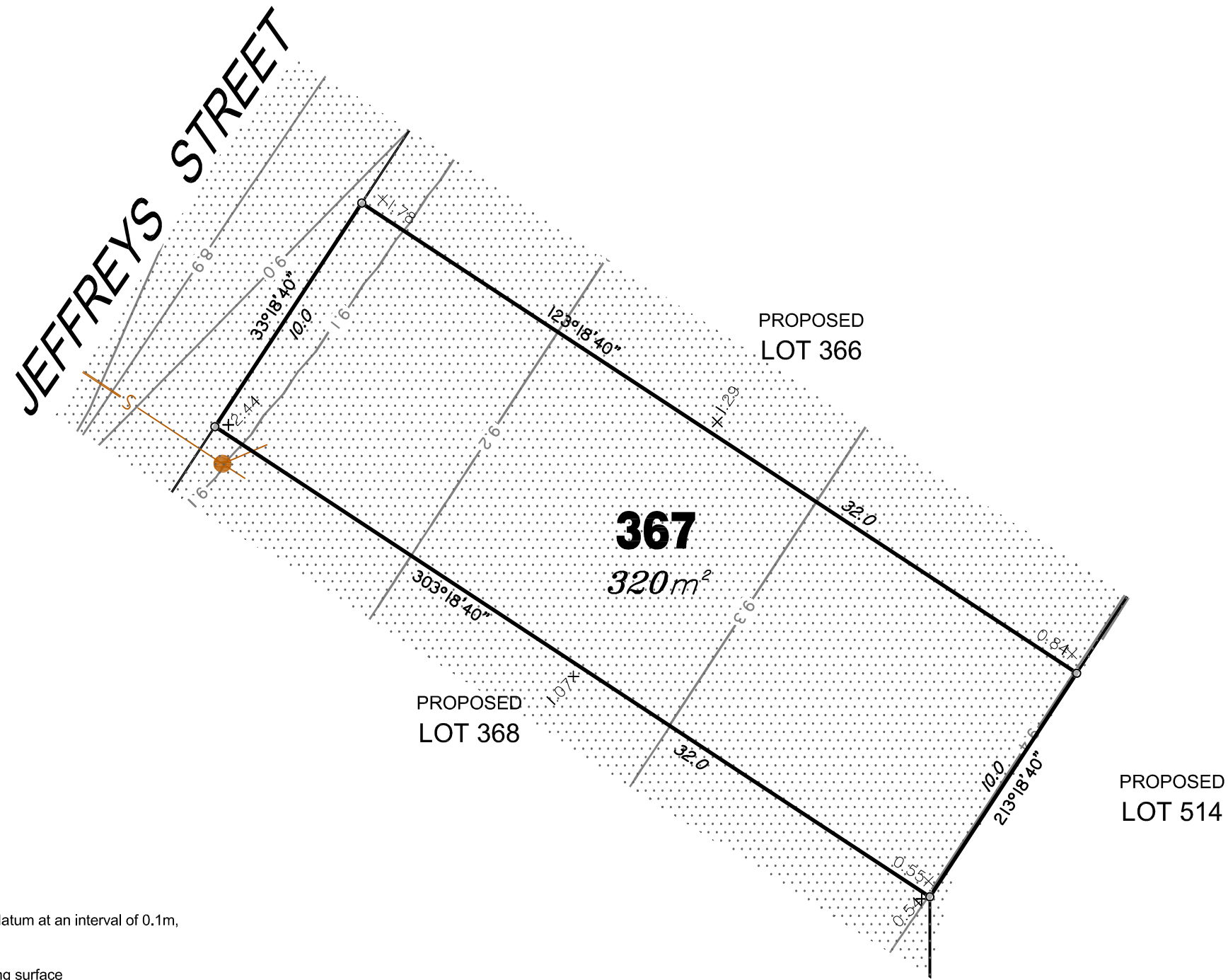
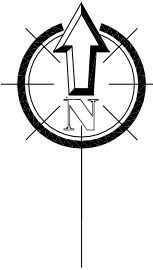
**DISCLOSURE PLAN**  
of Proposed Lot 366  
being part of  
Lot 2 on SP269617



BRISBANE (07) 3666 4700    MACKAY (07) 4951 2911    PROSERPINE (07) 4945 1722  
BOWEN (07) 4786 1050    CAIRNS (07) 4051 6722

Email [mail@thg.com.au](mailto:mail@thg.com.au)    [www.thg.com.au](http://www.thg.com.au)  
ABN 55156210052 THG WSG Pty Ltd t/a THG Resource Strategists

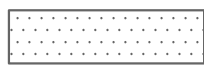
Drawing No 30599-DP366    Issue B



**LEGEND**

Final surface contours based on A.H.D. datum at an interval of 0.1m, shown as: — 1.0 —

Where applicable, areas filled from existing surface are shown as:-



Depth of Fill +0.13

Sewer line shown as: — S —

Sewer Manhole/Maintenance Shaft shown as: ●

Roofwater Drainage line shown as: — RWD —

Roofwater Manhole shown as: ●

Roofwater Pit shown as: ■



**RIVERBANK**

For  
**PEET**

**IMPORTANT NOTES:**  
(These notes are an integral part of this plan)  
This plan has been prepared for PEET & CO for the purposes of A Disclosure Plan Under the Land Sales Act 1984 (as Amended).

It is not to be used by any other person or corporation or for any other purposes and is subject to the following limitations:

The Lot dimensions and area shown hereon are subject to final field survey and also to the requirements of Council and any other authority which may have requirements under any relevant legislation.

Design surface contours from the design surface data supplied by Brown Consulting Pty Ltd. Where final surface contours are not shown, no change to existing surface level is proposed.

Compaction of any fill material placed on this site shall be completed under inspection and testing services in accordance with AS3798-2007.

Location of sewer and roofwater lines, manholes and pits are those shown on engineering design drawings and may differ from the as-constructed location.

**THESE DESIGNS AND DRAWINGS ARE COPYRIGHT AND ARE NOT TO BE USED OR REPRODUCED WITHOUT THE WRITTEN PERMISSION OF THG**

**Data Sources**  
Cadastral Boundaries 215809\_1\_LC1(D).dwg  
Design Surface Contours Stage 9 - 12D Design Tin.12da  
Engineering Design X\_806158\_BASE\_MASTER\_2014\_09\_08.dwg

No	Revisions	Date	Chkd
B	Revised to suit new Act	2/12/14	EJM
A	Original	8/9/14	EJM

Parish: CABOOLTURE  
County: STANLEY  
Locality: CABOOLTURE SOUTH  
Local Authority: M.B.R.C  
Horizontal Meridian: SP232377  
Vertical Level Datum: AHD  
Level Origin: PM109474(RL15.112)  
Scale: 1:200 @ A3  
Surveyed: THG WSG Pty Ltd  
Designed: Brown Consulting  
Drawn: EJM  
Checked: MMR  
Plot Date: 03 Dec, 2014  
Computer File Ref: 215809\_5\_DPs(B).dwg

**DISCLOSURE PLAN**  
of Proposed Lot 367  
being part of  
Lot 2 on SP269617



BRISBANE (07) 3666 4700  
MACKAY (07) 4951 2911  
PROSERPINE (07) 4945 1722  
BOWEN (07) 4786 1050  
CAIRNS (07) 4051 6722

Email [mail@thg.com.au](mailto:mail@thg.com.au) [www.thg.com.au](http://www.thg.com.au)  
ABN 55156210052 THG WSG Pty Ltd t/a THG Resource Strategists

Drawing No **30599-DP367** Issue **B**



### LEGEND

Final surface contours based on A.H.D. datum at an interval of 0.1m, shown as: 1:0

Where applicable, areas filled from existing surface are shown as:

Depth of Fill  $+0.13$

Sewer line shown as:

Sewer Manhole/Maintenance Shaft shown as:

Roofwater Drainage line shown as:

Roofwater Manhole shown as:

Roofwater Pit shown as:

# RIVERBANK

For  
**PEET**

**IMPORTANT NOTES:**  
(These notes are an integral part of this plan)  
This plan has been prepared for PEET & CO for the purposes of A Disclosure Plan Under the Land Sales Act 1984 (as Amended).

It is not to be used by any other person or corporation or for any other purposes and is subject to the following limitations:

The Lot dimensions and area shown hereon are subject to final field survey and also to the requirements of Council and any other authority which may have requirements under any relevant legislation.

Design surface contours from the design surface data supplied by Brown Consulting Pty Ltd. Where final surface contours are not shown, no change to existing surface level is proposed.

Compaction of any fill material placed on this site shall be completed under inspection and testing services in accordance with AS3798-2007.

Location of sewer and roofwater lines, manholes and pits are those shown on engineering design drawings and may differ from the as-constructed location.

**THESE DESIGNS AND DRAWINGS ARE COPYRIGHT AND ARE NOT TO BE USED OR REPRODUCED WITHOUT THE WRITTEN PERMISSION OF THG**

**Data Sources**  
Cadastral Boundaries 215809\_1\_LC1(D).dwg  
Design Surface Contours Stage 9 - 12D Design Tin.12da  
Engineering Design X\_806158\_BASE\_MASTER\_2014\_09\_08.dwg

No	Revisions	Date	Chkd
C	Add easement	14/9/15	EJM
B	Revised to suit new Act	2/12/14	EJM
A	Original	8/9/14	EJM

Parish: CABOOLTURE  
County: STANLEY  
Locality: CABOOLTURE SOUTH  
Local Authority: M.B.R.C  
Horizontal Meridian: SP232377  
Vertical Level Datum: AHD  
Level Origin: PM109474(RL15.112)  
Scale: 1:200 @ A3  
Surveyed: THG WSG Pty Ltd  
Designed: Brown Consulting  
Drawn: EJM  
Checked: MMR  
Plot Date: 14 Sep, 2015  
Computer File Ref: 215809\_5 DP Lot 368(C).dwg

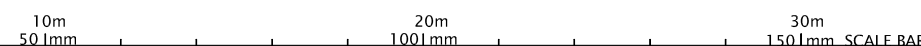
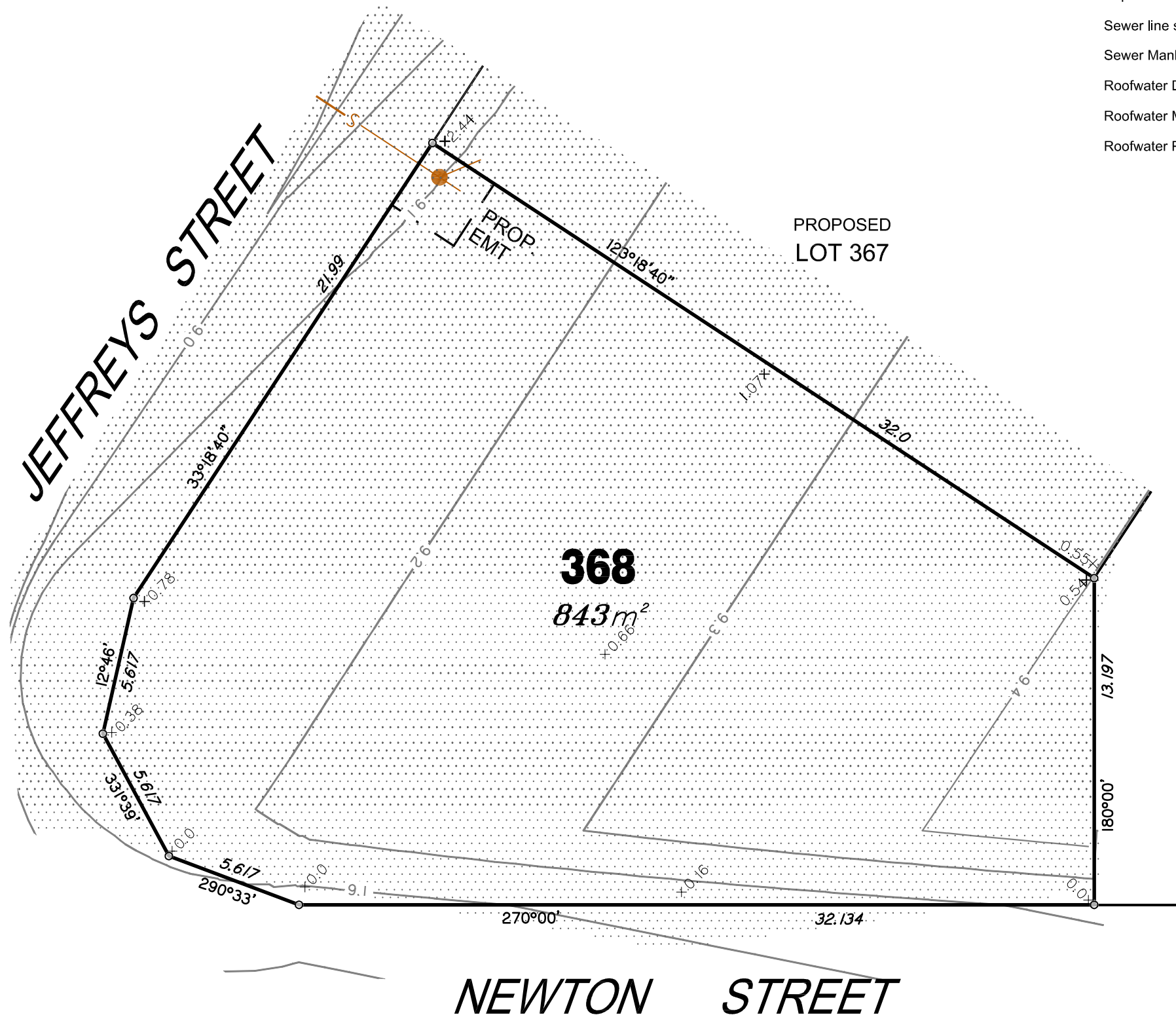
**DISCLOSURE PLAN**  
of Proposed Lot 368  
being part of  
Lot 2 on SP269622



BRISBANE (07) 3666 4700  
MACKAY (07) 4951 2911  
PROSERPINE (07) 4945 1722  
BOWEN (07) 4786 1050  
CAIRNS (07) 4051 6722

Email [mail@thg.com.au](mailto:mail@thg.com.au) [www.thg.com.au](http://www.thg.com.au)  
ABN 25 604 671 374  
Queensland Surveying Pty Ltd t/a THG Resource Strategists

Drawing No 30599-DP368 Issue C







### LEGEND

Final surface contours based on A.H.D. datum at an interval of 0.1m, shown as: 1:0

Where applicable, areas filled from existing surface are shown as:

Depth of Fill  $+0.1^3$

Sewer line shown as: S

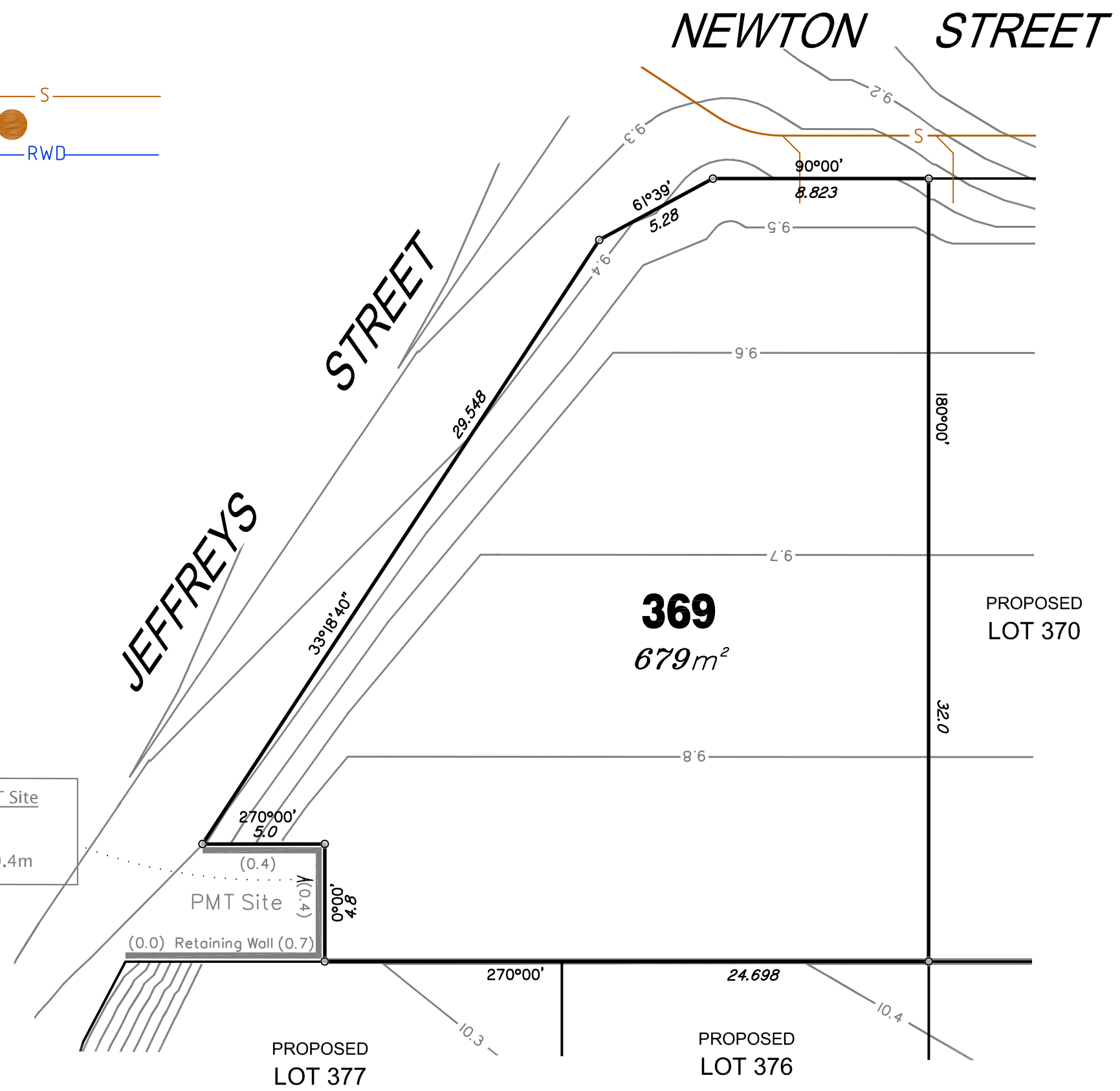
Sewer Manhole/Maintenance Shaft shown as:

Roofwater Drainage line shown as: RWD

Roofwater Manhole shown as:

Roofwater Pit shown as:

Retaining Wall PMT Site  
Min Height:- 0.4m  
Max Height:- 0.4m  
Average Height:- 0.4m



**IMPORTANT NOTES:**  
(These notes are an integral part of this plan)  
This plan has been prepared for PEET & CO for the purposes of A Disclosure Plan Under the Land Sales Act 1984 (as Amended).

It is not to be used by any other person or corporation or for any other purposes and is subject to the following limitations:

The Lot dimensions and area shown hereon are subject to final field survey and also to the requirements of Council and any other authority which may have requirements under any relevant legislation.

Design surface contours from the design surface data supplied by Brown Consulting Pty Ltd. Where final surface contours are not shown, no change to existing surface level is proposed.

Compaction of any fill material placed on this site shall be completed under inspection and testing services in accordance with AS3798-2007.

Location of sewer and roofwater lines, manholes and pits are those shown on engineering design drawings and may differ from the as-constructed location.

**THESE DESIGNS AND DRAWINGS ARE COPYRIGHT AND ARE NOT TO BE USED OR REPRODUCED WITHOUT THE WRITTEN PERMISSION OF THG**

**Data Sources**  
Cadastral Boundaries 215809\_1\_LC1(D).dwg  
Design Surface Contours Stage 9 - 12D Design Tin.12da  
Engineering Design X\_806158\_BASE\_MASTER\_2014\_09\_08.dwg

No	Revisions	Date	Chkd
B	Revised to suit new Act	2/12/14	EJM
A	Original	8/9/14	EJM

Parish: CABOOLTURE  
County: STANLEY  
Locality: CABOOLTURE SOUTH  
Local Authority: M.B.R.C  
Horizontal Meridian: SP232377  
Vertical Level Datum: AHD  
Level Origin: PM109474(RL15.112)  
Scale: 1:200 @ A3  
Surveyed: THG WSG Pty Ltd  
Designed: Brown Consulting  
Drawn: EJM  
Checked: MMR  
Plot Date: 03 Dec, 2014  
Computer File Ref: 215809\_5\_DPs(B).dwg

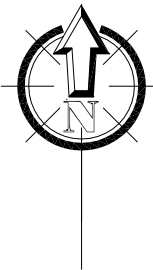
**DISCLOSURE PLAN**  
of Proposed Lot 369  
being part of  
Lot 2 on SP269617



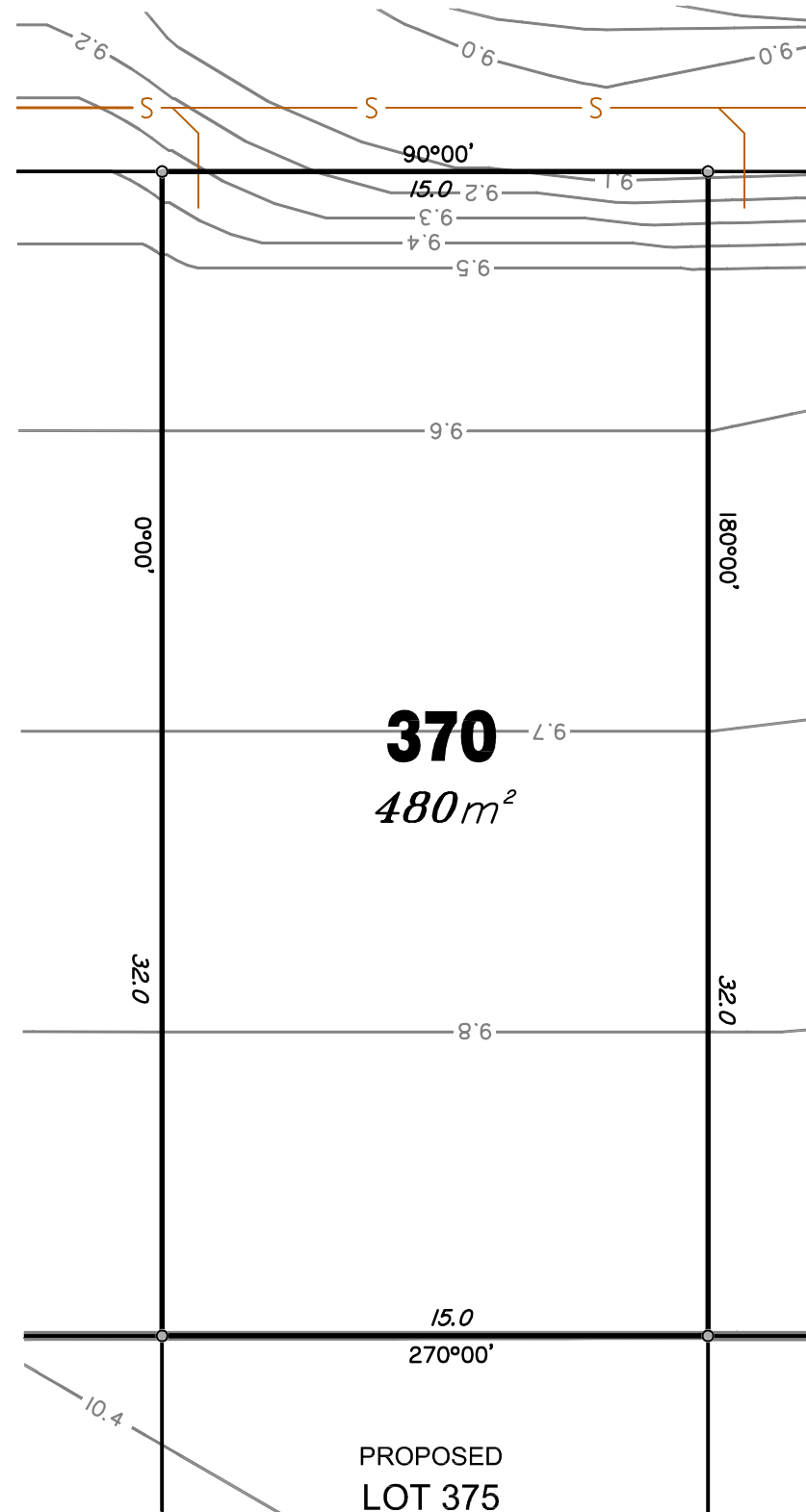
BRISBANE (07) 3666 4700    MACKAY (07) 4951 2911    PROSERPINE (07) 4945 1722  
BOWEN (07) 4786 1050    CAIRNS (07) 4051 6722

Email [mail@thg.com.au](mailto:mail@thg.com.au)    [www.thg.com.au](http://www.thg.com.au)  
ABN 55156210052 THG WSG Pty Ltd t/a THG Resource Strategists

Drawing No 30599-DP369    Issue B



# NEWTON STREET



## LEGEND

Final surface contours based on A.H.D. datum at an interval of 0.1m, shown as: — 1.0 —

Where applicable, areas filled from existing surface are shown as:-



Depth of Fill +0.13

Sewer line shown as: — S —

Sewer Manhole/Maintenance Shaft shown as:

Roofwater Drainage line shown as: — RWD —

Roofwater Manhole shown as:

Roofwater Pit shown as:



# RIVERBANK

For  
**PEET**

**IMPORTANT NOTES:**  
(These notes are an integral part of this plan)  
This plan has been prepared for PEET & CO for the purposes of A Disclosure Plan Under the Land Sales Act 1984 (as Amended).

It is not to be used by any other person or corporation or for any other purposes and is subject to the following limitations:

The Lot dimensions and area shown herein are subject to final field survey and also to the requirements of Council and any other authority which may have requirements under any relevant legislation.

Design surface contours from the design surface data supplied by Brown Consulting Pty Ltd. Where final surface contours are not shown, no change to existing surface level is proposed.

Compaction of any fill material placed on this site shall be completed under inspection and testing services in accordance with AS3798-2007.

Location of sewer and roofwater lines, manholes and pits are those shown on engineering design drawings and may differ from the as-constructed location.

**THESE DESIGNS AND DRAWINGS ARE COPYRIGHT AND ARE NOT TO BE USED OR REPRODUCED WITHOUT THE WRITTEN PERMISSION OF THG**

**Data Sources**  
Cadastral Boundaries 215809\_1\_LC1(D).dwg  
Design Surface Contours Stage 9 - 12D Design Tin.12da  
Engineering Design X\_806158\_BASE\_MASTER\_2014\_09\_08.dwg

No	Revisions	Date	Chkd
B	Revised to suit new Act	2/12/14	EJM
A	Original	8/9/14	EJM

Parish: CABOOLTURE  
County: STANLEY  
Locality: CABOOLTURE SOUTH  
Local Authority: M.B.R.C  
Horizontal Meridian: SP232377  
Vertical Level Datum: AHD  
Level Origin: PM109474(RL15.112)  
Scale: 1:200 @ A3  
Surveyed: THG WSG Pty Ltd  
Designed: Brown Consulting  
Drawn: EJM  
Checked: MMR  
Plot Date: 03 Dec, 2014  
Computer File Ref: 215809\_5\_DPs(B).dwg

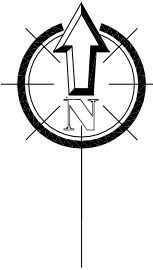
**DISCLOSURE PLAN**  
of Proposed Lot 370  
being part of  
Lot 2 on SP269617



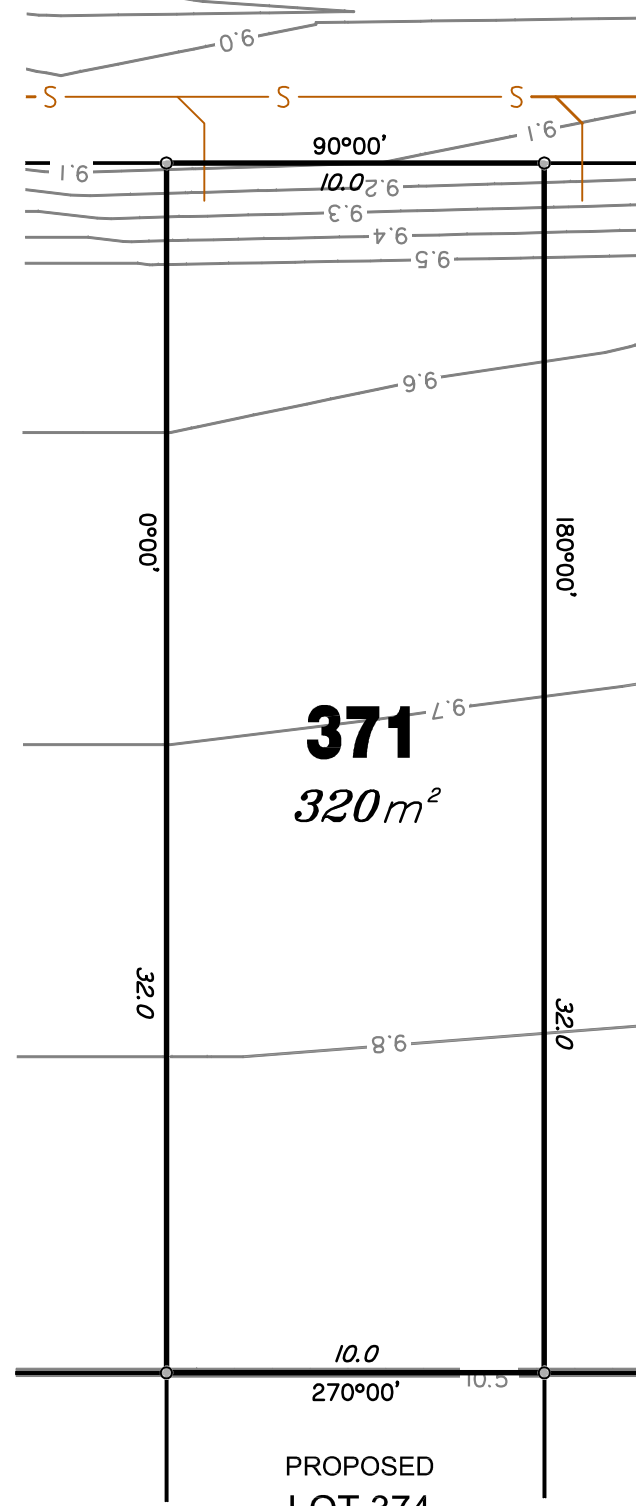
BRISBANE (07) 3666 4700 MACKAY (07) 4951 2911 PROSERPINE (07) 4945 1722  
BOWEN (07) 4786 1050 CAIRNS (07) 4051 6722

Email mail@thg.com.au www.thg.com.au  
ABN 55156210052 THG WSG Pty Ltd t/a THG Resource Strategists

Drawing No 30599-DP370 Issue B



# NEWTON STREET



## LEGEND

Final surface contours based on A.H.D. datum at an interval of 0.1m, shown as: — 1.0 —

Where applicable, areas filled from existing surface are shown as:-



Depth of Fill  $\pm 0.1^3$

Sewer line shown as: — S —

Sewer Manhole/Maintenance Shaft shown as:

Roofwater Drainage line shown as: — RWD —

Roofwater Manhole shown as:

Roofwater Pit shown as:



# RIVERBANK

For  
**PEET**

**IMPORTANT NOTES:**  
(These notes are an integral part of this plan)  
This plan has been prepared for PEET & CO for the purposes of A Disclosure Plan Under the Land Sales Act 1984 (as Amended).

It is not to be used by any other person or corporation or for any other purposes and is subject to the following limitations:

The Lot dimensions and area shown herein are subject to final field survey and also to the requirements of Council and any other authority which may have requirements under any relevant legislation.

Design surface contours from the design surface data supplied by Brown Consulting Pty Ltd. Where final surface contours are not shown, no change to existing surface level is proposed.

Compaction of any fill material placed on this site shall be completed under inspection and testing services in accordance with AS3798-2007.

Location of sewer and roofwater lines, manholes and pits are those shown on engineering design drawings and may differ from the as-constructed location.

**THESE DESIGNS AND DRAWINGS ARE COPYRIGHT AND ARE NOT TO BE USED OR REPRODUCED WITHOUT THE WRITTEN PERMISSION OF THG**

**Data Sources**  
Cadastral Boundaries 215809\_1\_LC1(D).dwg  
Design Surface Contours Stage 9 - 12D Design Tin.12da  
Engineering Design X\_806158\_BASE\_MASTER\_2014\_09\_08.dwg

No	Revisions	Date	Chkd
B	Revised to suit new Act	2/12/14	EJM
A	Original	8/9/14	EJM

Parish: CABOOLTURE  
County: STANLEY  
Locality: CABOOLTURE SOUTH  
Local Authority: M.B.R.C  
Horizontal Meridian: SP232377  
Vertical Level Datum: AHD  
Level Origin: PM109474(RL15.112)  
Scale: 1:200 @ A3  
Surveyed: THG WSG Pty Ltd  
Designed: Brown Consulting  
Drawn: EJM  
Checked: MMR  
Plot Date: 03 Dec, 2014  
Computer File Ref: 215809\_5 DPs(B).dwg

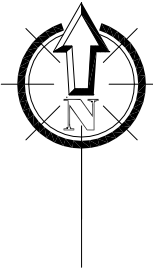
**DISCLOSURE PLAN**  
of Proposed Lot 371  
being part of  
Lot 2 on SP269617



BRISBANE (07) 3666 4700    MACKAY (07) 4951 2911    PROSERPINE (07) 4945 1722  
BOWEN (07) 4786 1050    CAIRNS (07) 4051 6722

Email [mail@thg.com.au](mailto:mail@thg.com.au)    [www.thg.com.au](http://www.thg.com.au)  
ABN 551 5621 0052 THG WSG Pty Ltd t/a THG Resource Strategists

Drawing No **30599-DP371**    Issue **B**



### LEGEND

Final surface contours based on A.H.D. datum at an interval of 0.1m, shown as: — 1.0 —

Where applicable, areas filled from existing surface are shown as:-



Depth of Fill +0.13

Sewer line shown as:



Sewer Manhole/Maintenance Shaft shown as:



Roofwater Drainage line shown as:



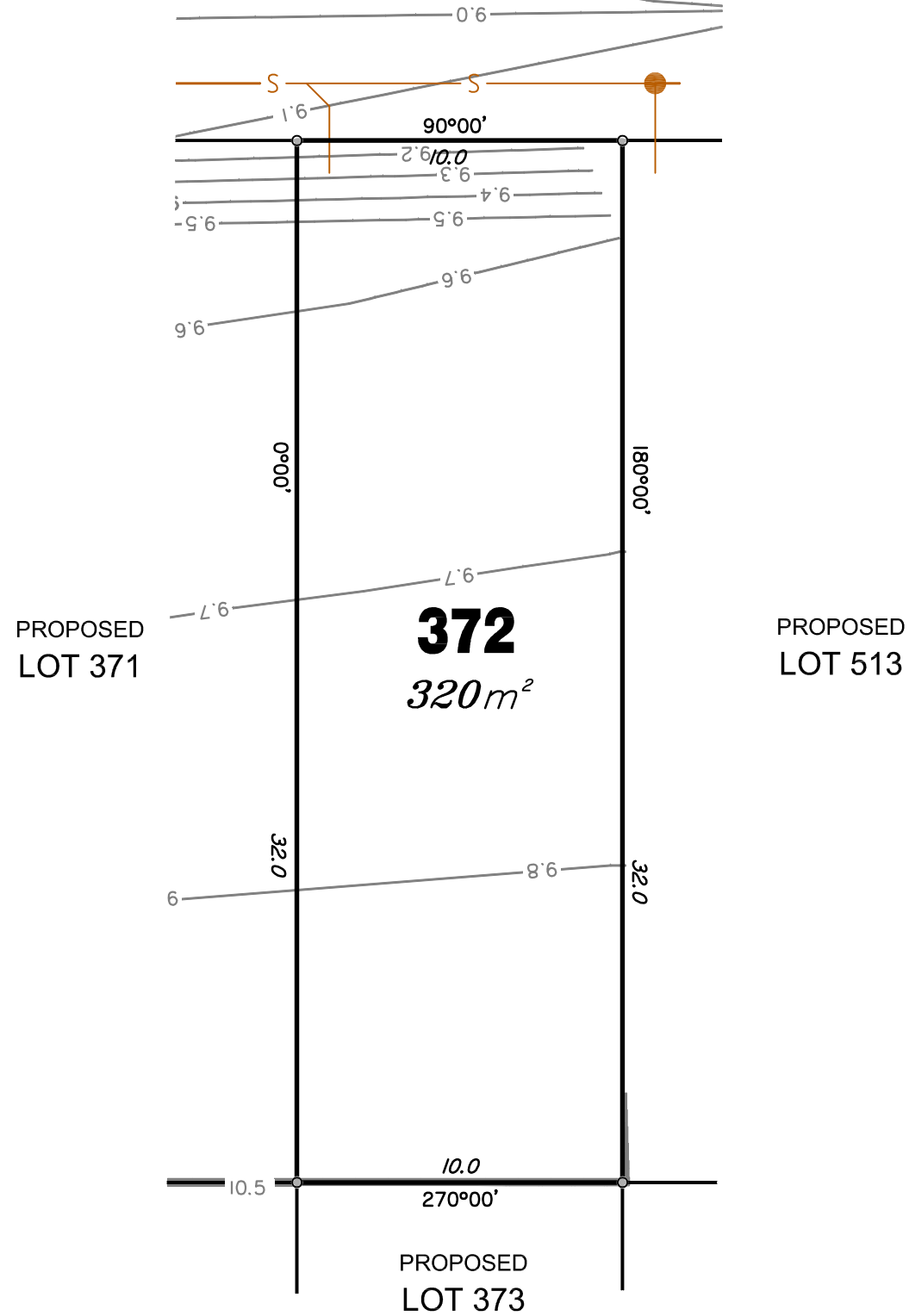
Roofwater Manhole shown as:



Roofwater Pit shown as:



## NEWTON STREET



# RIVERBANK

For  
**PEET**

**IMPORTANT NOTES:**  
(These notes are an integral part of this plan)  
This plan has been prepared for PEET & CO for the purposes of A Disclosure Plan Under the Land Sales Act 1984 (as Amended).

It is not to be used by any other person or corporation or for any other purposes and is subject to the following limitations:

The Lot dimensions and area shown herein are subject to final field survey and also to the requirements of Council and any other authority which may have requirements under any relevant legislation.

Design surface contours from the design surface data supplied by Brown Consulting Pty Ltd. Where final surface contours are not shown, no change to existing surface level is proposed.

Compaction of any fill material placed on this site shall be completed under inspection and testing services in accordance with AS3798-2007.

Location of sewer and roofwater lines, manholes and pits are those shown on engineering design drawings and may differ from the as-constructed location.

**THESE DESIGNS AND DRAWINGS ARE COPYRIGHT AND ARE NOT TO BE USED OR REPRODUCED WITHOUT THE WRITTEN PERMISSION OF THG**

**Data Sources**  
Cadastral Boundaries 215809\_1\_LC1(D).dwg  
Design Surface Contours Stage 9 - 12D Design Tin.12da  
Engineering Design X\_806158\_BASE\_MASTER\_2014\_09\_08.dwg

No	Revisions	Date	Chkd
B	Revised to suit new Act	2/12/14	EJM
A	Original	8/9/14	EJM

Parish: CABOOLTURE  
County: STANLEY  
Locality: CABOOLTURE SOUTH  
Local Authority: M.B.R.C  
Horizontal Meridian: SP232377  
Vertical Level Datum: AHD  
Level Origin: PM109474(RL15.112)  
Scale: 1:200 @ A3  
Surveyed: THG WSG Pty Ltd  
Designed: Brown Consulting  
Drawn: EJM  
Checked: MMR  
Plot Date: 03 Dec, 2014  
Computer File Ref: 215809\_5\_DPs(B).dwg

**DISCLOSURE PLAN**  
of Proposed Lot 372  
being part of  
Lot 2 on SP269617



BRISBANE (07) 3666 4700    MACKAY (07) 4951 2911    PROSERPINE (07) 4945 1722  
BOWEN (07) 4786 1050    CAIRNS (07) 4051 6722

Email [mail@thg.com.au](mailto:mail@thg.com.au)    [www.thg.com.au](http://www.thg.com.au)  
ABN 55156210052 THG WSG Pty Ltd t/a THG Resource Strategists

Drawing No **30599-DP372**    Issue **B**







### LEGEND

Final surface contours based on A.H.D. datum at an interval of 0.1m, shown as: — 1-0 —

Where applicable, areas filled from existing surface are shown as:-



Depth of Fill +0.13

Sewer line shown as: — S —



Sewer Manhole/Maintenance Shaft shown as:

Roofwater Drainage line shown as: — RWD —



Roofwater Manhole shown as:

Roofwater Pit shown as:

# RIVERBANK

For  
**PEET**

**IMPORTANT NOTES:**  
(These notes are an integral part of this plan)  
This plan has been prepared for PEET & CO for the purposes of **A Disclosure Plan Under the Land Sales Act 1984 (as Amended)**.

It is not to be used by any other person or corporation or for any other purposes and is subject to the following limitations:

The Lot dimensions and area shown herein are subject to final field survey and also to the requirements of Council and any other authority which may have requirements under any relevant legislation.

Design surface contours from the design surface data supplied by Brown Consulting Pty Ltd. Where final surface contours are not shown, no change to existing surface level is proposed.

Compaction of any fill material placed on this site shall be completed under inspection and testing services in accordance with AS3798-2007.

Location of sewer and roofwater lines, manholes and pits are those shown on engineering design drawings and may differ from the as-constructed location.

**THESE DESIGNS AND DRAWINGS ARE COPYRIGHT AND ARE NOT TO BE USED OR REPRODUCED WITHOUT THE WRITTEN PERMISSION OF THG**

**Data Sources**  
Cadastral Boundaries 215809\_1\_LC1(D).dwg  
Design Surface Contours Stage 9 - 12D Design Tin.12da  
Engineering Design X\_806158\_BASE\_MASTER\_2014\_09\_08.dwg

No	Revisions	Date	Chkd
B	Revised to suit new Act	2/12/14	EJM
A	Original	8/9/14	EJM

Parish: CABOOLTURE  
County: STANLEY  
Locality: CABOOLTURE SOUTH  
Local Authority: M.B.R.C  
Horizontal Meridian: SP232377  
Vertical Level Datum: AHD  
Level Origin: PM109474(RL15.112)  
Scale: 1:200 @ A3  
Surveyed: THG WSG Pty Ltd  
Designed: Brown Consulting  
Drawn: EJM  
Checked: MMR  
Plot Date: 03 Dec, 2014  
Computer File Ref: 215809\_5\_DPs(B).dwg

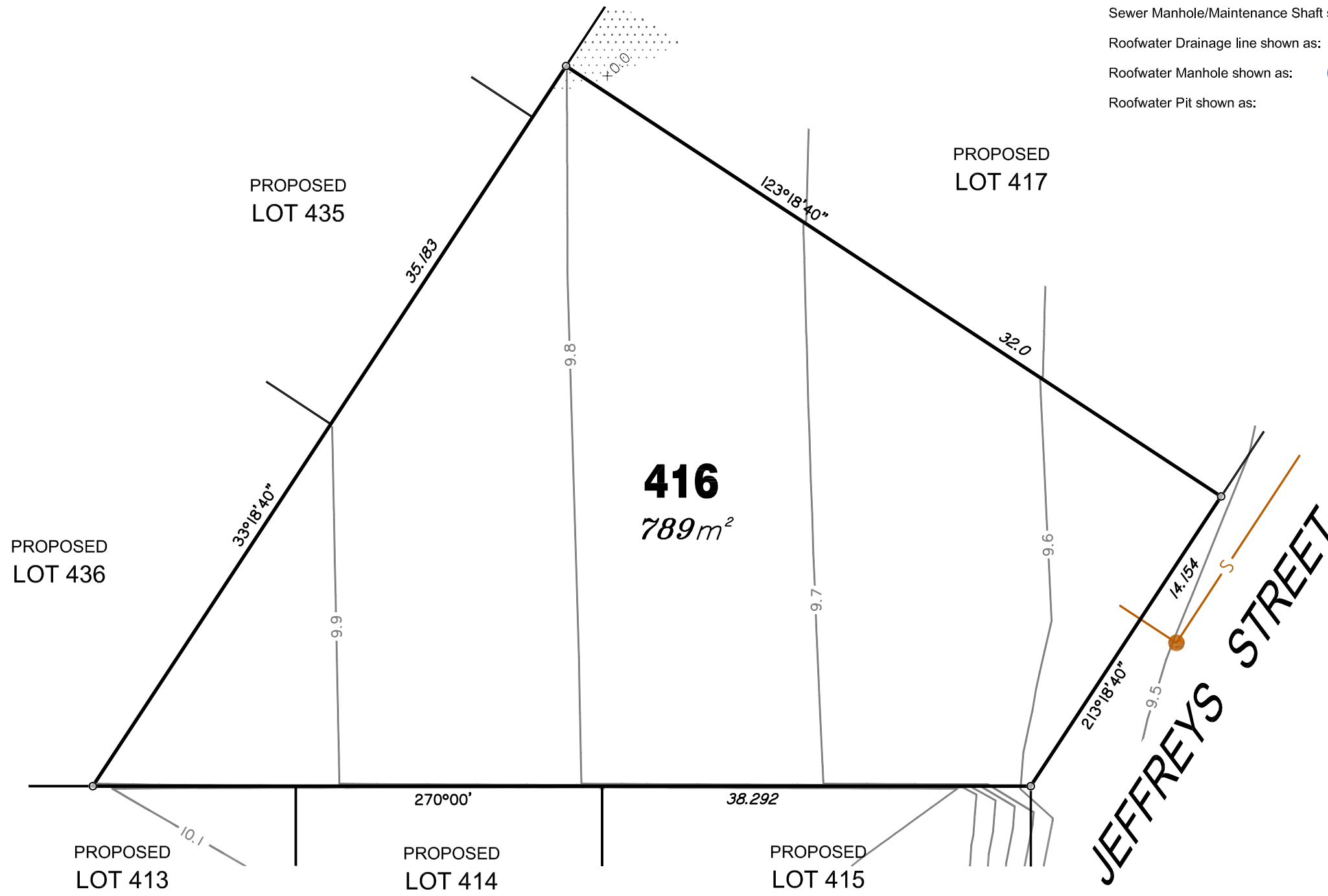
**DISCLOSURE PLAN**  
of Proposed Lot 416  
being part of  
Lot 2 on SP269617



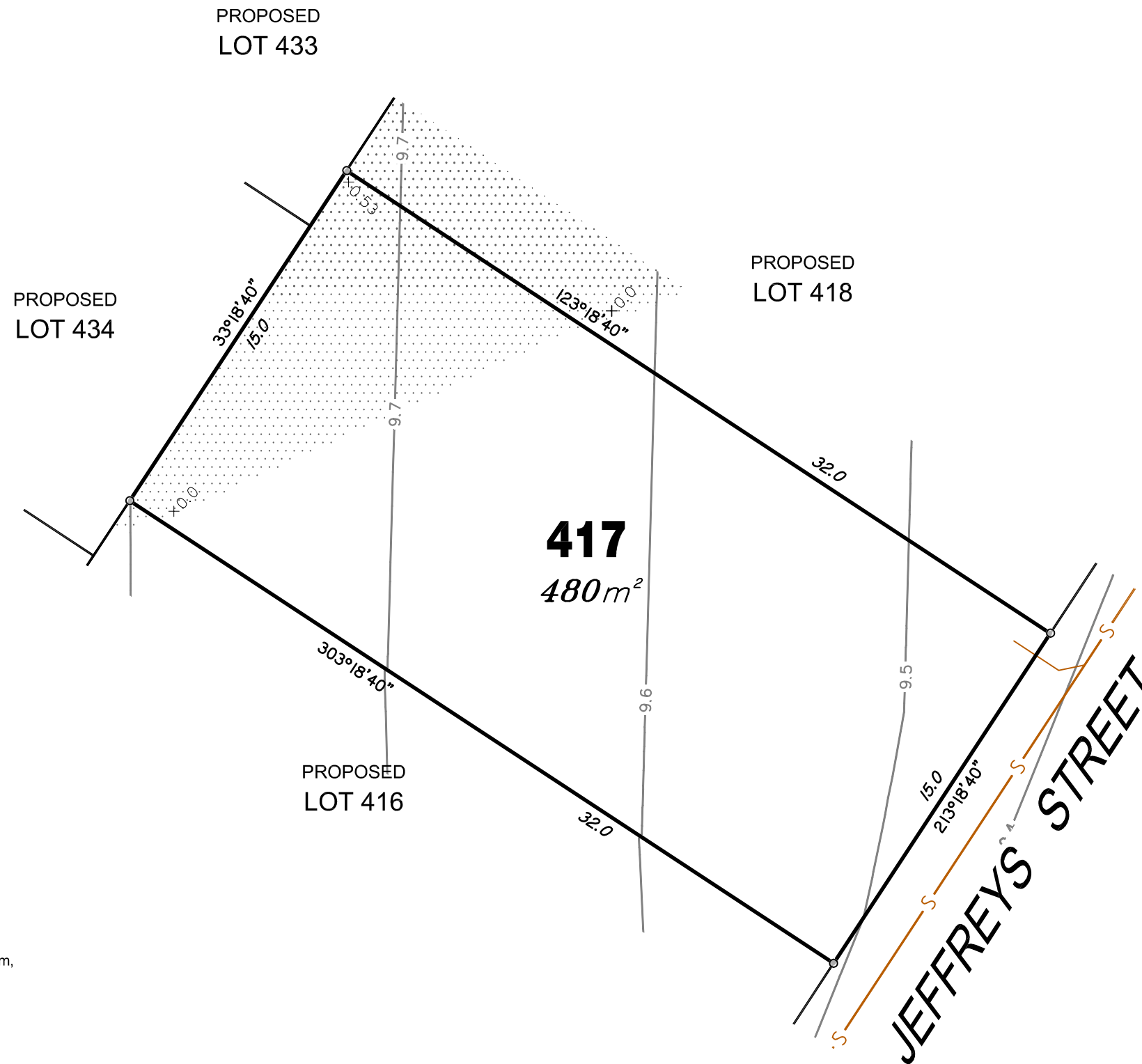
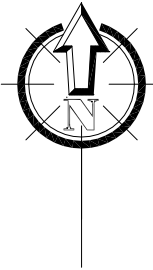
BRISBANE (07) 3666 4700    MACKAY (07) 4951 2911    PROSERPINE (07) 4945 1722  
BOWEN (07) 4786 1050    CAIRNS (07) 4051 6722

Email [mail@thg.com.au](mailto:mail@thg.com.au)    [www.thg.com.au](http://www.thg.com.au)  
ABN 55156210052 THG WSG Pty Ltd t/a THG Resource Strategists

Drawing No **30599-DP416**    Issue **B**



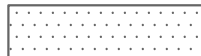
0 10m 50mm 20m 100mm 30m 150mm SCALE BAR



**LEGEND**

Final surface contours based on A.H.D. datum at an interval of 0.1m, shown as: — 1.0 —

Where applicable, areas filled from existing surface are shown as:-



Depth of Fill +0.13

Sewer line shown as: — S —

Sewer Manhole/Maintenance Shaft shown as:

Roofwater Drainage line shown as: — RWD —

Roofwater Manhole shown as:

Roofwater Pit shown as:



**RIVERBANK**

For  
**PEET**

**IMPORTANT NOTES:**  
(These notes are an integral part of this plan)  
This plan has been prepared for PEET & CO for the purposes of A Disclosure Plan Under the Land Sales Act 1984 (as Amended).

It is not to be used by any other person or corporation or for any other purposes and is subject to the following limitations:

The Lot dimensions and area shown herein are subject to final field survey and also to the requirements of Council and any other authority which may have requirements under any relevant legislation.

Design surface contours from the design surface data supplied by Brown Consulting Pty Ltd. Where final surface contours are not shown, no change to existing surface level is proposed.

Compaction of any fill material placed on this site shall be completed under inspection and testing services in accordance with AS3798-2007.

Location of sewer and roofwater lines, manholes and pits are those shown on engineering design drawings and may differ from the as-constructed location.

**THESE DESIGNS AND DRAWINGS ARE COPYRIGHT AND ARE NOT TO BE USED OR REPRODUCED WITHOUT THE WRITTEN PERMISSION OF THG**

**Data Sources**  
Cadastral Boundaries 215809\_1\_LC1(D).dwg  
Design Surface Contours Stage 9 - 12D Design Tin.12da  
Engineering Design X\_806158\_BASE\_MASTER\_2014\_09\_08.dwg

No	Revisions	Date	Chkd
B	Revised to suit new Act	2/12/14	EJM
A	Original	8/9/14	EJM

Parish: CABOOLTURE  
County: STANLEY  
Locality: CABOOLTURE SOUTH  
Local Authority: M.B.R.C  
Horizontal Meridian: SP232377  
Vertical Level Datum: AHD  
Level Origin: PM109474(RL15.112)  
Scale: 1:200 @ A3  
Surveyed: THG WSG Pty Ltd  
Designed: Brown Consulting  
Drawn: EJM  
Checked: MMR  
Plot Date: 03 Dec, 2014  
Computer File Ref: 215809\_5\_DPs(B).dwg

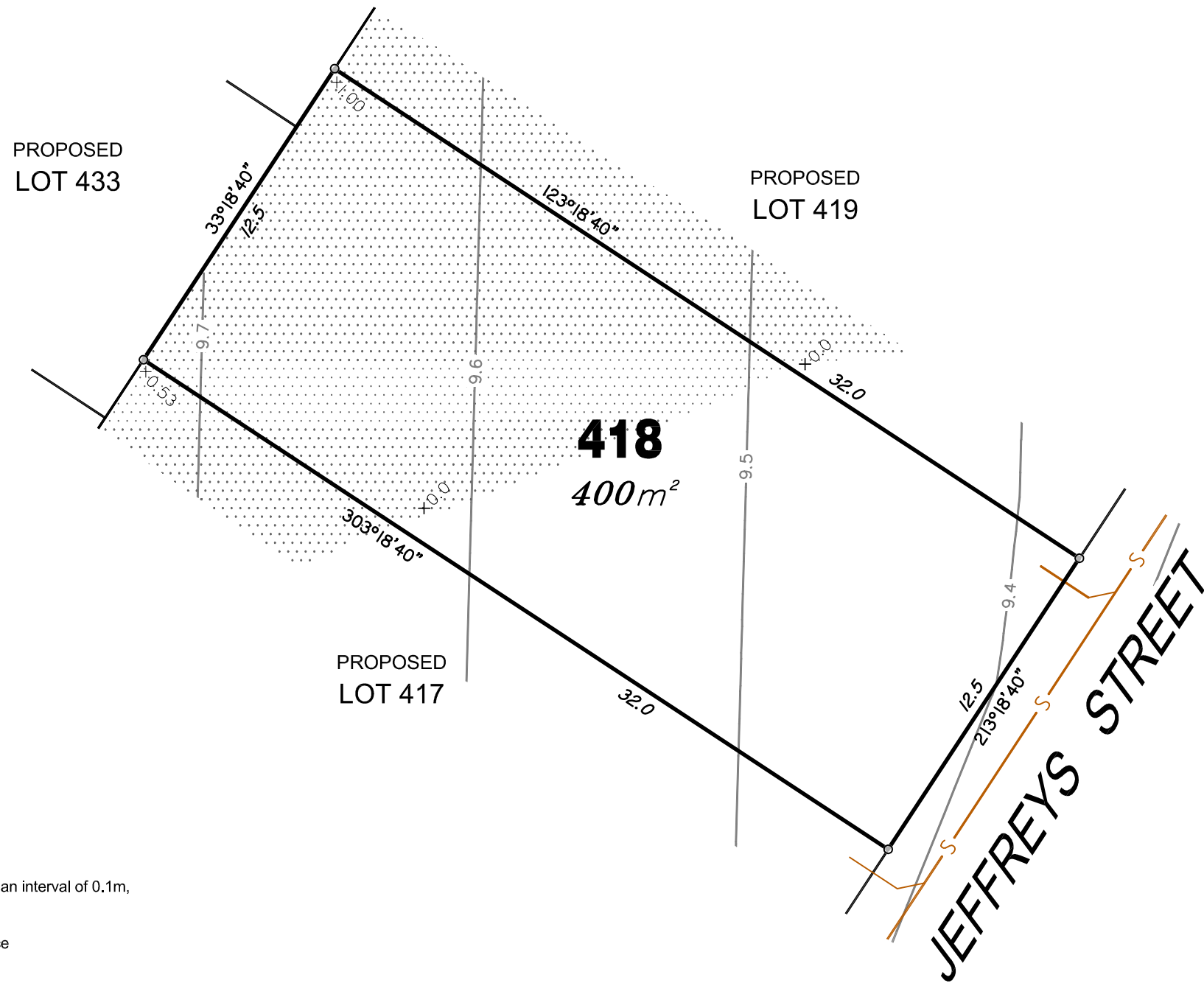
**DISCLOSURE PLAN**  
of Proposed Lot 417  
being part of  
Lot 2 on SP269617



BRISBANE (07) 3666 4700 MACKAY (07) 4951 2911 PROSERPINE (07) 4945 1722  
BOWEN (07) 4786 1050 CAIRNS (07) 4051 6722

Email mail@thg.com.au www.thg.com.au  
ABN 551 5621 0052 THG WSG Pty Ltd t/a THG Resource Strategists

Drawing No 30599-DP417 Issue B



**LEGEND**

Final surface contours based on A.H.D. datum at an interval of 0.1m, shown as: 1:0

Where applicable, areas filled from existing surface are shown as:-

Depth of Fill +0.13

Sewer line shown as:

Sewer Manhole/Maintenance Shaft shown as:

Roofwater Drainage line shown as:

Roofwater Manhole shown as:

Roofwater Pit shown as:



**RIVERBANK**

For  
**PEET**

**IMPORTANT NOTES:**  
(These notes are an integral part of this plan)  
This plan has been prepared for PEET & CO for the purposes of **A Disclosure Plan Under the Land Sales Act 1984 (as Amended)**.

It is not to be used by any other person or corporation or for any other purposes and is subject to the following limitations:

The Lot dimensions and area shown herein are subject to final field survey and also to the requirements of Council and any other authority which may have requirements under any relevant legislation.

Design surface contours from the design surface data supplied by Brown Consulting Pty Ltd. Where final surface contours are not shown, no change to existing surface level is proposed.

Compaction of any fill material placed on this site shall be completed under inspection and testing services in accordance with AS3798-2007.

Location of sewer and roofwater lines, manholes and pits are those shown on engineering design drawings and may differ from the as-constructed location.

**THESE DESIGNS AND DRAWINGS ARE COPYRIGHT AND ARE NOT TO BE USED OR REPRODUCED WITHOUT THE WRITTEN PERMISSION OF THG**

**Data Sources**  
Cadastral Boundaries 215809\_1\_LC1(D).dwg  
Design Surface Contours Stage 9 - 12D Design Tin.12da  
Engineering Design X\_806158\_BASE\_MASTER\_2014\_09\_08.dwg

No	Revisions	Date	Chkd
B	Revised to suit new Act	2/12/14	EJM
A	Original	8/9/14	EJM

Parish: CABOOLTURE  
County: STANLEY  
Locality: CABOOLTURE SOUTH  
Local Authority: M.B.R.C  
Horizontal Meridian: SP232377  
Vertical Level Datum: AHD  
Level Origin: PM109474(RL15.112)  
Scale: 1:200 @ A3  
Surveyed: THG WSG Pty Ltd  
Designed: Brown Consulting  
Drawn: EJM  
Checked: MMR  
Plot Date: 03 Dec, 2014  
Computer File Ref: 215809\_5\_DPs(B).dwg

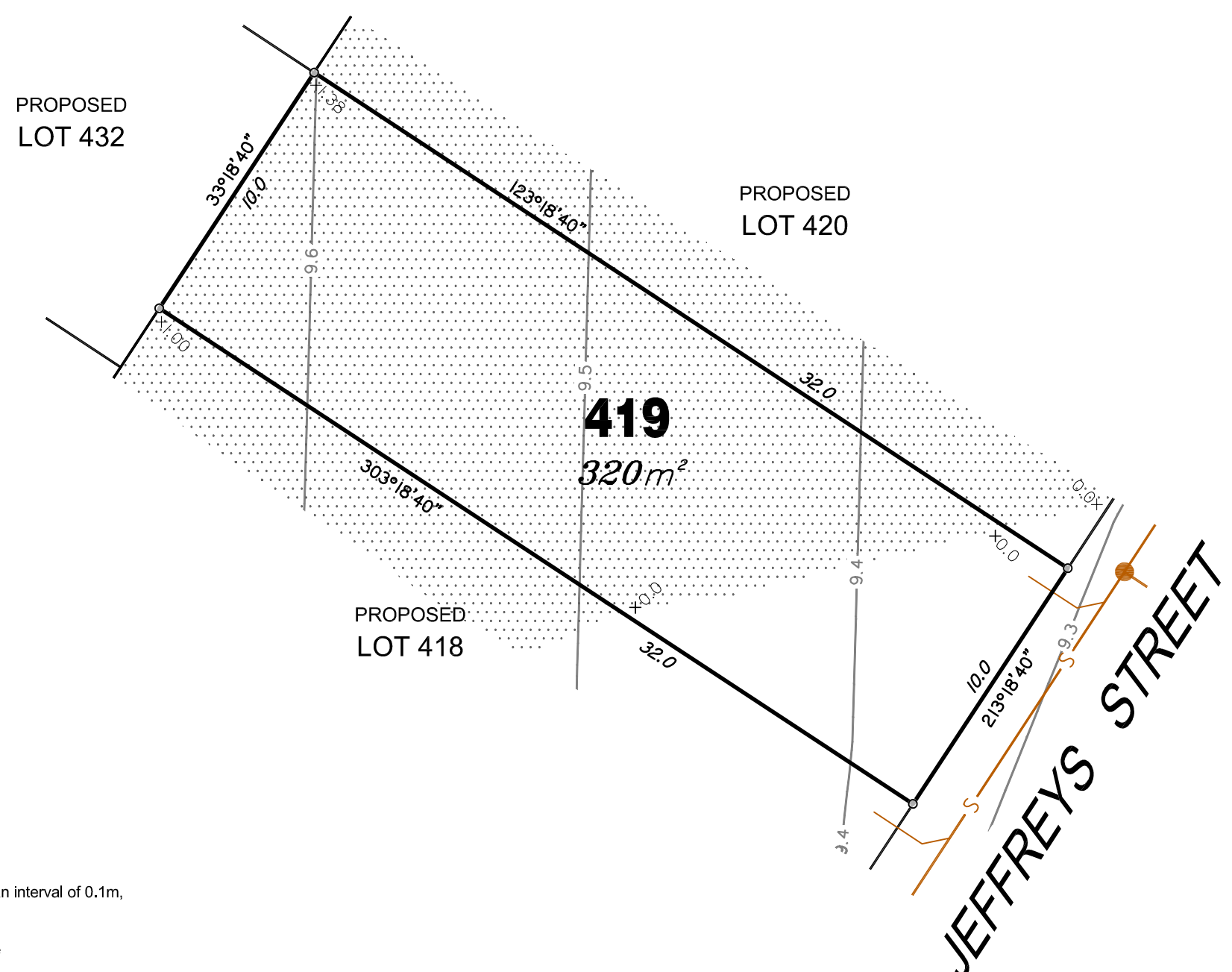
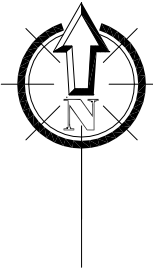
**DISCLOSURE PLAN**  
of Proposed Lot 418  
being part of  
Lot 2 on SP269617



BRISBANE (07) 3666 4700  
MACKAY (07) 4951 2911  
PROSERPINE (07) 4945 1722  
BOWEN (07) 4786 1050  
CAIRNS (07) 4051 6722

Email [mail@thg.com.au](mailto:mail@thg.com.au) [www.thg.com.au](http://www.thg.com.au)  
ABN 55156210052 THG WSG Pty Ltd t/a THG Resource Strategists

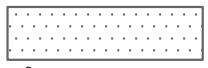
Drawing No **30599-DP418** Issue **B**



**LEGEND**

Final surface contours based on A.H.D. datum at an interval of 0.1m, shown as: — 1.0 —

Where applicable, areas filled from existing surface are shown as:-



Depth of Fill +0.13

Sewer line shown as: — S —

Sewer Manhole/Maintenance Shaft shown as:

Roofwater Drainage line shown as: — RWD —

Roofwater Manhole shown as:

Roofwater Pit shown as:



**RIVERBANK**

For  
**PEET**

**IMPORTANT NOTES:**  
(These notes are an integral part of this plan)  
This plan has been prepared for PEET & CO for the purposes of **A Disclosure Plan Under the Land Sales Act 1984 (as Amended)**.

It is not to be used by any other person or corporation or for any other purposes and is subject to the following limitations:

The Lot dimensions and area shown hereon are subject to final field survey and also to the requirements of Council and any other authority which may have requirements under any relevant legislation.

Design surface contours from the design surface data supplied by Brown Consulting Pty Ltd. Where final surface contours are not shown, no change to existing surface level is proposed.

Compaction of any fill material placed on this site shall be completed under inspection and testing services in accordance with AS3798-2007.

Location of sewer and roofwater lines, manholes and pits are those shown on engineering design drawings and may differ from the as-constructed location.

**THESE DESIGNS AND DRAWINGS ARE COPYRIGHT AND ARE NOT TO BE USED OR REPRODUCED WITHOUT THE WRITTEN PERMISSION OF THG**

**Data Sources**

Cadastral Boundaries	215809_1_LC1(D).dwg
Design Surface Contours	Stage 9 - 12D Design Tin.12da
Engineering Design	X_806158_BASE_MASTER_2014_09_08.dwg

No	Revisions	Date	Chkd
B	Revised to suit new Act	2/12/14	EJM
A	Original	8/9/14	EJM

Parish: CABOOLTURE  
 County: STANLEY  
 Locality: CABOOLTURE SOUTH  
 Local Authority: M.B.R.C  
 Horizontal Meridian: SP232377  
 Vertical Level Datum: AHD  
 Level Origin: PM109474(RL15.112)  
 Scale: 1:200 @ A3  
 Surveyed: THG WSG Pty Ltd  
 Designed: Brown Consulting  
 Drawn: EJM  
 Checked: MMR  
 Plot Date: 03 Dec, 2014  
 Computer File Ref: 215809\_5 DPs(B).dwg

**DISCLOSURE PLAN**  
 of Proposed Lot 419  
 being part of  
 Lot 2 on SP269617

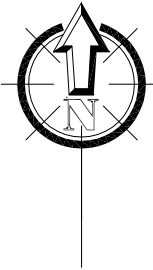


BRISBANE (07) 3666 4700    MACKAY (07) 4951 2911    PROSERPINE (07) 4945 1722  
 BOWEN (07) 4786 1050    CAIRNS (07) 4051 6722

Email [mail@thg.com.au](mailto:mail@thg.com.au)    [www.thg.com.au](http://www.thg.com.au)  
 ABN 551 562 0052    THG WSG Pty Ltd t/a THG Resource Strategists

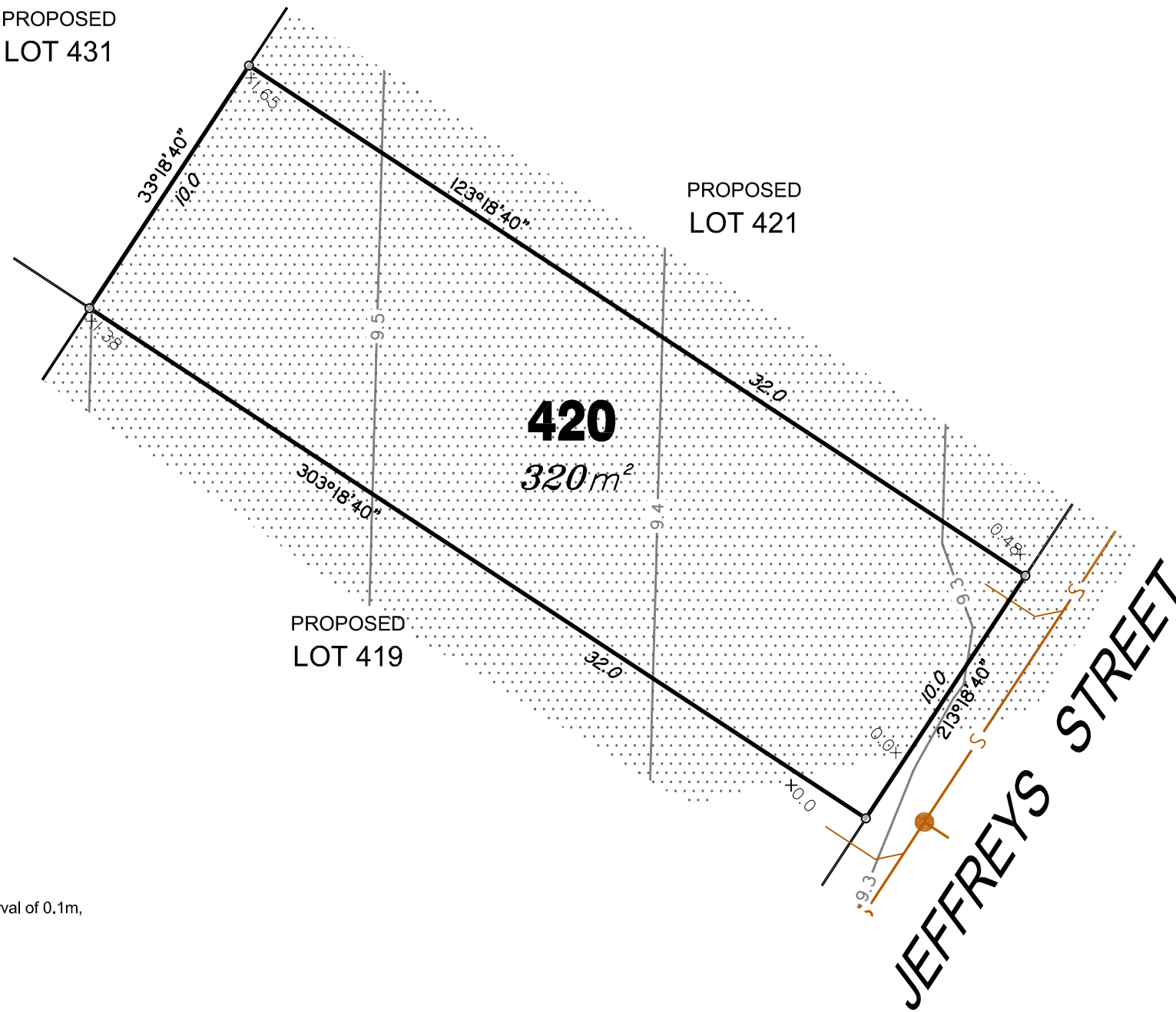
Drawing No **30599-DP419**    Issue **B**





PROPOSED  
LOT 431

PROPOSED  
LOT 421



**LEGEND**

Final surface contours based on A.H.D. datum at an interval of 0.1m, shown as: 1:0

Where applicable, areas filled from existing surface are shown as:

Depth of Fill  $+0.13$

Sewer line shown as:

Sewer Manhole/Maintenance Shaft shown as:

Roofwater Drainage line shown as:

Roofwater Manhole shown as:

Roofwater Pit shown as:



**RIVERBANK**

For  
**PEET**

**IMPORTANT NOTES:**  
(These notes are an integral part of this plan)  
This plan has been prepared for PEET & CO for the purposes of **A Disclosure Plan Under the Land Sales Act 1984 (as Amended)**.

It is not to be used by any other person or corporation or for any other purposes and is subject to the following limitations:

The Lot dimensions and area shown herein are subject to final field survey and also to the requirements of Council and any other authority which may have requirements under any relevant legislation.

Design surface contours from the design surface data supplied by Brown Consulting Pty Ltd. Where final surface contours are not shown, no change to existing surface level is proposed.

Compaction of any fill material placed on this site shall be completed under inspection and testing services in accordance with AS3798-2007.

Location of sewer and roofwater lines, manholes and pits are those shown on engineering design drawings and may differ from the as-constructed location.

**THESE DESIGNS AND DRAWINGS ARE COPYRIGHT AND ARE NOT TO BE USED OR REPRODUCED WITHOUT THE WRITTEN PERMISSION OF THG**

**Data Sources**  
Cadastral Boundaries 215809\_1\_LC1(D).dwg  
Design Surface Contours Stage 9 - 12D Design Tin.12da  
Engineering Design X\_806158\_BASE\_MASTER\_2014\_09\_08.dwg

No	Revisions	Date	Chkd
B	Revised to suit new Act	2/12/14	EJM
A	Original	8/9/14	EJM

Parish: CABOOLTURE  
County: STANLEY  
Locality: CABOOLTURE SOUTH  
Local Authority: M.B.R.C  
Horizontal Meridian: SP232377  
Vertical Level Datum: AHD  
Level Origin: PM109474(RL15.112)  
Scale: 1:200 @ A3  
Surveyed: THG WSG Pty Ltd  
Designed: Brown Consulting  
Drawn: EJM  
Checked: MMR  
Plot Date: 03 Dec, 2014  
Computer File Ref: 215809\_5 DPs(B).dwg

**DISCLOSURE PLAN**  
of Proposed Lot 420  
being part of  
Lot 2 on SP269617



BRISBANE (07) 3666 4700  
MACKAY (07) 4951 2911  
PROSERPINE (07) 4945 1722  
BOWEN (07) 4786 1050  
CAIRNS (07) 4051 6722

Email [mail@thg.com.au](mailto:mail@thg.com.au) [www.thg.com.au](http://www.thg.com.au)  
ABN 55156210052 THG WSG Pty Ltd t/a THG Resource Strategists

Drawing No **30599-DP420** Issue **B**



**IMPORTANT NOTES:**  
(These notes are an integral part of this plan)  
This plan has been prepared for PEET & CO for the purposes of **A Disclosure Plan Under the Land Sales Act 1984 (as Amended)**.

It is not to be used by any other person or corporation or for any other purposes and is subject to the following limitations:

The Lot dimensions and area shown herein are subject to final field survey and also to the requirements of Council and any other authority which may have requirements under any relevant legislation.

Design surface contours from the design surface data supplied by Brown Consulting Pty Ltd. Where final surface contours are not shown, no change to existing surface level is proposed.

Compaction of any fill material placed on this site shall be completed under inspection and testing services in accordance with AS3798-2007.

Location of sewer and roofwater lines, manholes and pits are those shown on engineering design drawings and may differ from the as-constructed location.

**THESE DESIGNS AND DRAWINGS ARE COPYRIGHT AND ARE NOT TO BE USED OR REPRODUCED WITHOUT THE WRITTEN PERMISSION OF THG**

**Data Sources**  
Cadastral Boundaries 215809\_1\_LC1(D).dwg  
Design Surface Contours Stage 9 - 12D Design Tin.12da  
Engineering Design X\_806158\_BASE\_MASTER\_2014\_09\_08.dwg

No	Revisions	Date	Chkd
B	Revised to suit new Act	2/12/14	EJM
A	Original	8/9/14	EJM

Parish: CABOOLTURE  
County: STANLEY  
Locality: CABOOLTURE SOUTH  
Local Authority: M.B.R.C  
Horizontal Meridian: SP232377  
Vertical Level Datum: AHD  
Level Origin: PM109474(RL15.112)  
Scale: 1:200 @ A3  
Surveyed: THG WSG Pty Ltd  
Designed: Brown Consulting  
Drawn: EJM  
Checked: MMR  
Plot Date: 03 Dec, 2014  
Computer File Ref: 215809\_5\_DPs(B).dwg

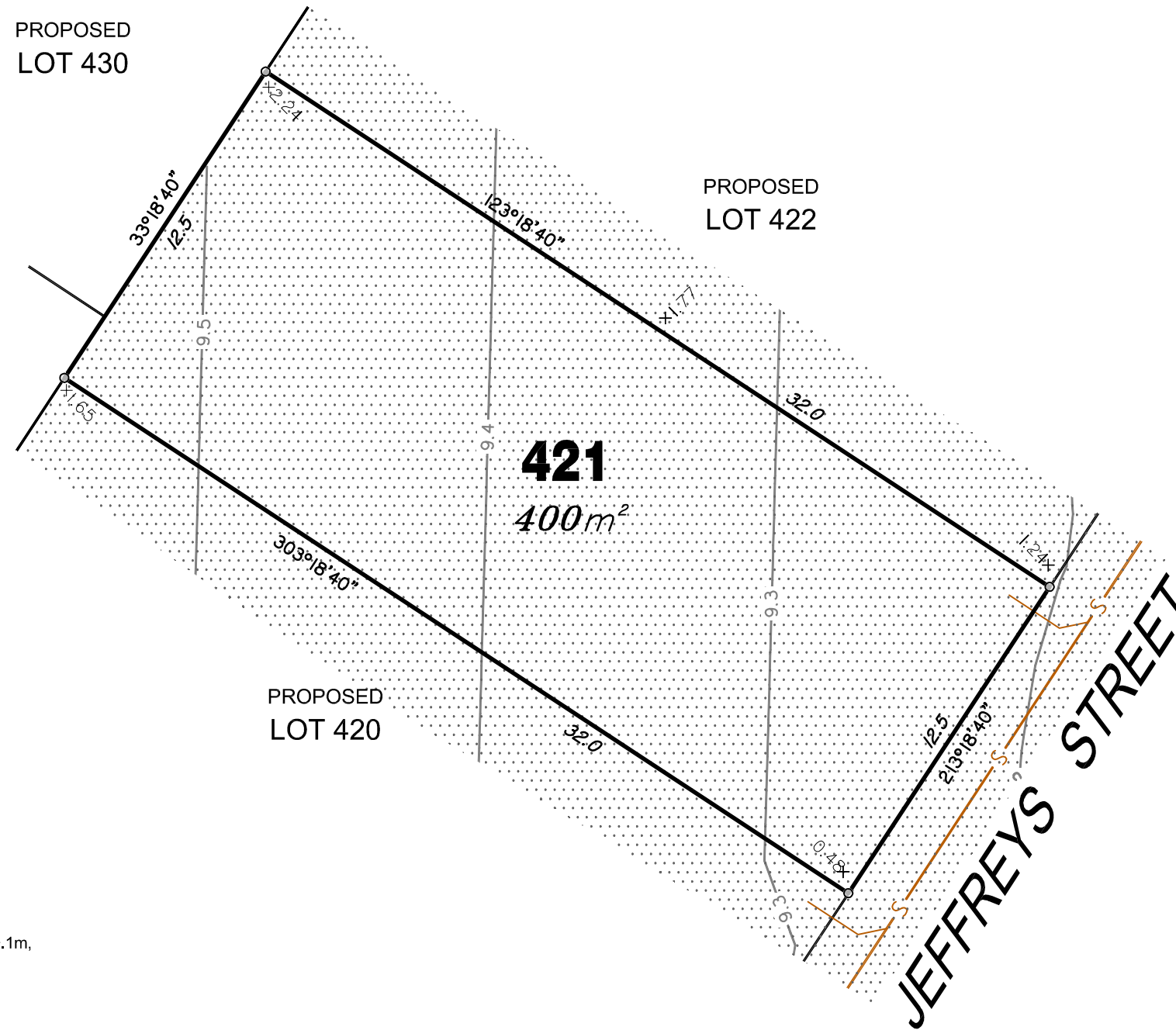
**DISCLOSURE PLAN**  
of Proposed Lot 421  
being part of  
Lot 2 on SP269617



BRISBANE (07) 3666 4700    MACKAY (07) 4951 2911    PROSERPINE (07) 4945 1722  
BOWEN (07) 4786 1050    CAIRNS (07) 4051 6722

Email [mail@thg.com.au](mailto:mail@thg.com.au)    [www.thg.com.au](http://www.thg.com.au)  
ABN 55156210052 THG WSG Pty Ltd t/a THG Resource Strategists

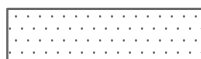
Drawing No **30599-DP421**    Issue **B**



**LEGEND**

Final surface contours based on A.H.D. datum at an interval of 0.1m, shown as: — 1·0 —

Where applicable, areas filled from existing surface are shown as:-



Depth of Fill +0.13

Sewer line shown as: — S —

Sewer Manhole/Maintenance Shaft shown as:

Roofwater Drainage line shown as: — RWD —

Roofwater Manhole shown as:

Roofwater Pit shown as:





**IMPORTANT NOTES:**  
(These notes are an integral part of this plan)  
This plan has been prepared for PEET & CO for the purposes of **A Disclosure Plan Under the Land Sales Act 1984 (as Amended)**.

It is not to be used by any other person or corporation or for any other purposes and is subject to the following limitations:

The Lot dimensions and area shown herein are subject to final field survey and also to the requirements of Council and any other authority which may have requirements under any relevant legislation.

Design surface contours from the design surface data supplied by Brown Consulting Pty Ltd. Where final surface contours are not shown, no change to existing surface level is proposed.

Compaction of any fill material placed on this site shall be completed under inspection and testing services in accordance with AS3798-2007.

Location of sewer and roofwater lines, manholes and pits are those shown on engineering design drawings and may differ from the as-constructed location.

**THESE DESIGNS AND DRAWINGS ARE COPYRIGHT AND ARE NOT TO BE USED OR REPRODUCED WITHOUT THE WRITTEN PERMISSION OF THG**

**Data Sources**  
Cadastral Boundaries 215809\_1\_LC1(D).dwg  
Design Surface Contours Stage 9 - 12D Design Tin.12da  
Engineering Design X\_806158\_BASE\_MASTER\_2014\_09\_08.dwg

No	Revisions	Date	Chkd
B	Revised to suit new Act	2/12/14	EJM
A	Original	8/9/14	EJM

Parish: CABOOLTURE  
County: STANLEY  
Locality: CABOOLTURE SOUTH  
Local Authority: M.B.R.C  
Horizontal Meridian: SP232377  
Vertical Level Datum: AHD  
Level Origin: PM109474(RL15.112)  
Scale: 1:200 @ A3  
Surveyed: THG WSG Pty Ltd  
Designed: Brown Consulting  
Drawn: EJM  
Checked: MMR  
Plot Date: 03 Dec, 2014  
Computer File Ref: 215809\_5\_DPs(B).dwg

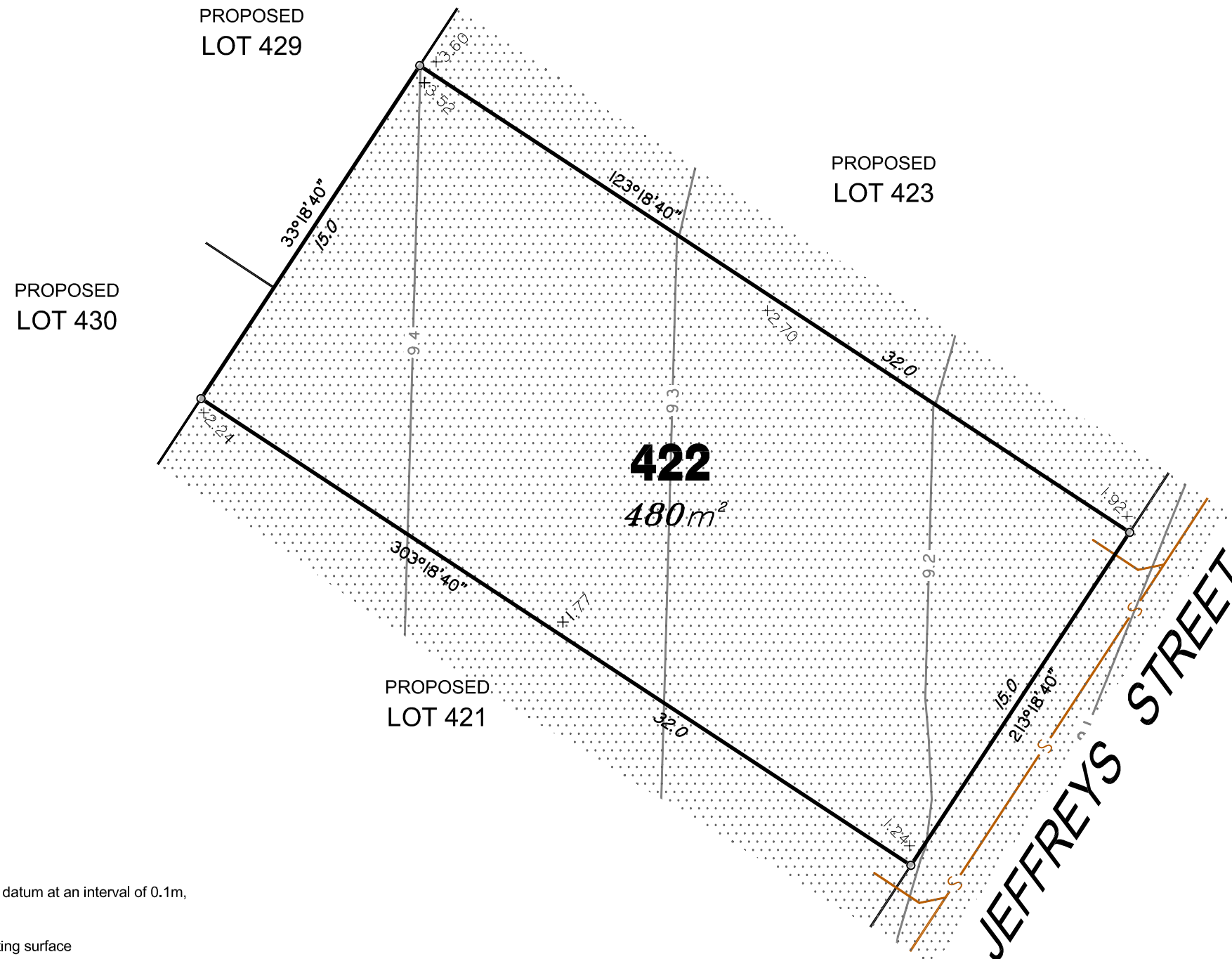
**DISCLOSURE PLAN**  
of Proposed Lot 422  
being part of  
Lot 2 on SP269617



BRISBANE (07) 3666 4700    MACKAY (07) 4951 2911    PROSERPINE (07) 4945 1722  
BOWEN (07) 4786 1050    CAIRNS (07) 4051 6722

Email [mail@thg.com.au](mailto:mail@thg.com.au)    [www.thg.com.au](http://www.thg.com.au)  
ABN 55156210052 THG WSG Pty Ltd t/a THG Resource Strategists

Drawing No **30599-DP422**    Issue **B**



**LEGEND**

Final surface contours based on A.H.D. datum at an interval of 0.1m, shown as: 1:0

Where applicable, areas filled from existing surface are shown as:

Depth of Fill +0.13

Sewer line shown as:

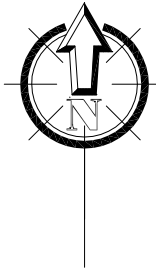
Sewer Manhole/Maintenance Shaft shown as:

Roofwater Drainage line shown as:

Roofwater Manhole shown as:

Roofwater Pit shown as:





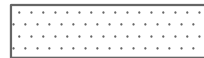
EXISTING SURFACE LEVELS ARE NOT AVAILABLE OVER PART OF PROPOSED LOT 423, THEREFORE DEPTHS OF FILL VALUES CANNOT BE ASCERTAINED IN THIS AREA.



**LEGEND**

Final surface contours based on A.H.D. datum at an interval of 0.1m, shown as: — 1.0 —

Where applicable, areas filled from existing surface are shown as:-



Depth of Fill +0.13

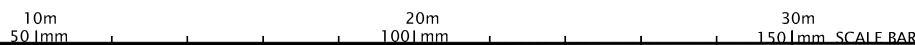
Sewer line shown as: — S —

Sewer Manhole/Maintenance Shaft shown as:

Roofwater Drainage line shown as: — RWD —

Roofwater Manhole shown as:

Roofwater Pit shown as:



**RIVERBANK**

For  
**PEET**

**IMPORTANT NOTES:**  
(These notes are an integral part of this plan)  
This plan has been prepared for PEET & CO for the purposes of A Disclosure Plan Under the Land Sales Act 1984 (as Amended).

It is not to be used by any other person or corporation or for any other purposes and is subject to the following limitations:

The Lot dimensions and area shown herein are subject to final field survey and also to the requirements of Council and any other authority which may have requirements under any relevant legislation.

Design surface contours from the design surface data supplied by Brown Consulting Pty Ltd. Where final surface contours are not shown, no change to existing surface level is proposed.

Compaction of any fill material placed on this site shall be completed under inspection and testing services in accordance with AS3798-2007.

Location of sewer and roofwater lines, manholes and pits are those shown on engineering design drawings and may differ from the as-constructed location.

**THESE DESIGNS AND DRAWINGS ARE COPYRIGHT AND ARE NOT TO BE USED OR REPRODUCED WITHOUT THE WRITTEN PERMISSION OF THG**

**Data Sources**  
Cadastral Boundaries 215809\_1\_LC1(D).dwg  
Design Surface Contours Stage 9 - 12D Design Tin.12da  
Engineering Design X\_806158\_BASE\_MASTER\_2014\_09\_08.dwg

No	Revisions	Date	Chkd
B	Revised to suit new Act	2/12/14	EJM
A	Original	8/9/14	EJM

Parish: CABOOLTURE  
County: STANLEY  
Locality: CABOOLTURE SOUTH  
Local Authority: M.B.R.C  
Horizontal Meridian: SP232377  
Vertical Level Datum: AHD  
Level Origin: PM109474(RL15.112)  
Scale: 1:200 @ A3  
Surveyed: THG WSG Pty Ltd  
Designed: Brown Consulting  
Drawn: EJM  
Checked: MMR  
Plot Date: 03 Dec, 2014  
Computer File Ref: 215809\_5 DPs(B).dwg

**DISCLOSURE PLAN**  
of Proposed Lot 423  
being part of  
Lot 2 on SP269617

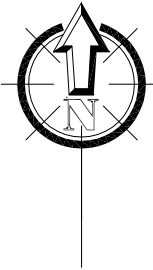


BRISBANE (07) 3666 4700  
MACKAY (07) 4951 2911  
PROSERPINE (07) 4945 1722  
BOWEN (07) 4786 1050  
CAIRNS (07) 4051 6722

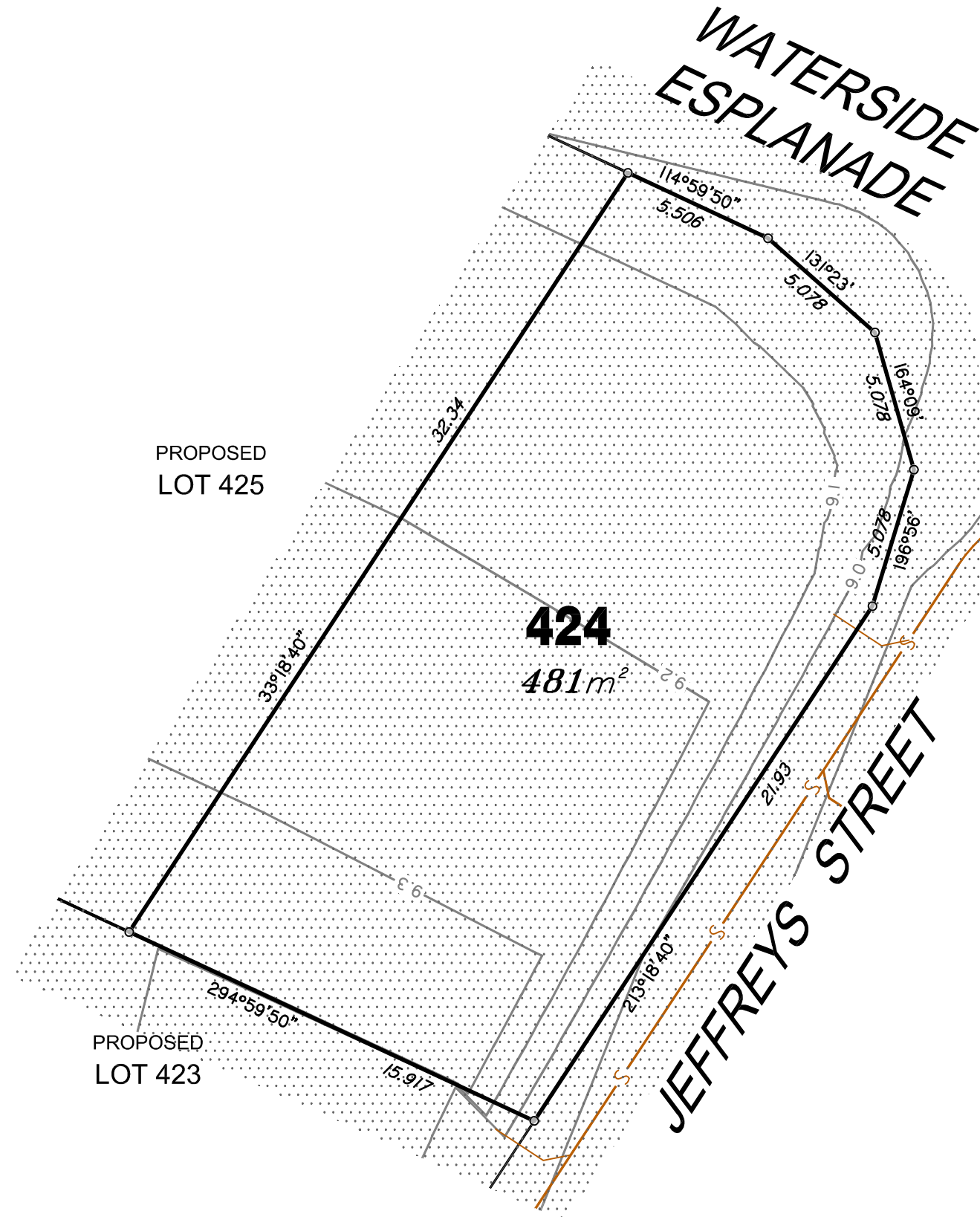
Email mail@thg.com.au www.thg.com.au  
ABN 55156210052 THG WSG Pty Ltd t/a THG Resource Strategists

Drawing No 30599-DP423 Issue B





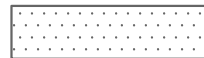
EXISTING SURFACE LEVELS ARE NOT AVAILABLE WITHIN THE BOUNDARIES OF PROPOSED LOT 424, THEREFORE DEPTHS OF FILL VALUES CANNOT BE ASCERTAINED.



**LEGEND**

Final surface contours based on A.H.D. datum at an interval of 0.1m, shown as: — 1.0 —

Where applicable, areas filled from existing surface are shown as:-



Depth of Fill +0.13

Sewer line shown as: — S —

Sewer Manhole/Maintenance Shaft shown as: ●

Roofwater Drainage line shown as: — RWD —

Roofwater Manhole shown as: ●

Roofwater Pit shown as: ■



**IMPORTANT NOTES:**  
(These notes are an integral part of this plan)  
This plan has been prepared for PEET & CO for the purposes of A Disclosure Plan Under the Land Sales Act 1984 (as Amended).

It is not to be used by any other person or corporation or for any other purposes and is subject to the following limitations:

The Lot dimensions and area shown herein are subject to final field survey and also to the requirements of Council and any other authority which may have requirements under any relevant legislation.

Design surface contours from the design surface data supplied by Brown Consulting Pty Ltd. Where final surface contours are not shown, no change to existing surface level is proposed.

Compaction of any fill material placed on this site shall be completed under inspection and testing services in accordance with AS3798-2007.

Location of sewer and roofwater lines, manholes and pits are those shown on engineering design drawings and may differ from the as-constructed location.

**THESE DESIGNS AND DRAWINGS ARE COPYRIGHT AND ARE NOT TO BE USED OR REPRODUCED WITHOUT THE WRITTEN PERMISSION OF THG**

**Data Sources**  
Cadastral Boundaries 215809\_1.LC1(D).dwg  
Design Surface Contours Stage 9 - 12D Design Tin.12da  
Engineering Design X\_806158\_BASE\_MASTER\_2014\_09\_08.dwg

No	Revisions	Date	Chkd
B	Revised to suit new Act	2/12/14	EJM
A	Original	8/9/14	EJM

Parish: CABOOLTURE  
County: STANLEY  
Locality: CABOOLTURE SOUTH  
Local Authority: M.B.R.C  
Horizontal Meridian: SP232377  
Vertical Level Datum: AHD  
Level Origin: PM109474(RL15.112)  
Scale: 1:200 @ A3  
Surveyed: THG WSG Pty Ltd  
Designed: Brown Consulting  
Drawn: EJM  
Checked: MMR  
Plot Date: 03 Dec, 2014  
Computer File Ref: 215809\_5 DPs(B).dwg

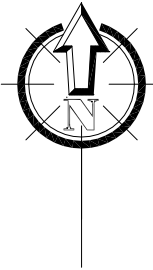
**DISCLOSURE PLAN**  
of Proposed Lot 424  
being part of  
Lot 2 on SP269617



BRISBANE (07) 3666 4700    MACKAY (07) 4951 2911    PROSERPINE (07) 4945 1722  
BOWEN (07) 4786 1050    CAIRNS (07) 4051 6722

Email mail@thg.com.au    www.thg.com.au  
ABN 55156210052 THG WSG Pty Ltd t/a THG Resource Strategists

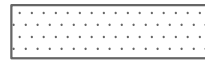
Drawing No 30599-DP424    Issue B



**LEGEND**

Final surface contours based on A.H.D. datum at an interval of 0.1m, shown as: — 1:0 —

Where applicable, areas filled from existing surface are shown as:-



Depth of Fill +0.13

Sewer line shown as: — S —

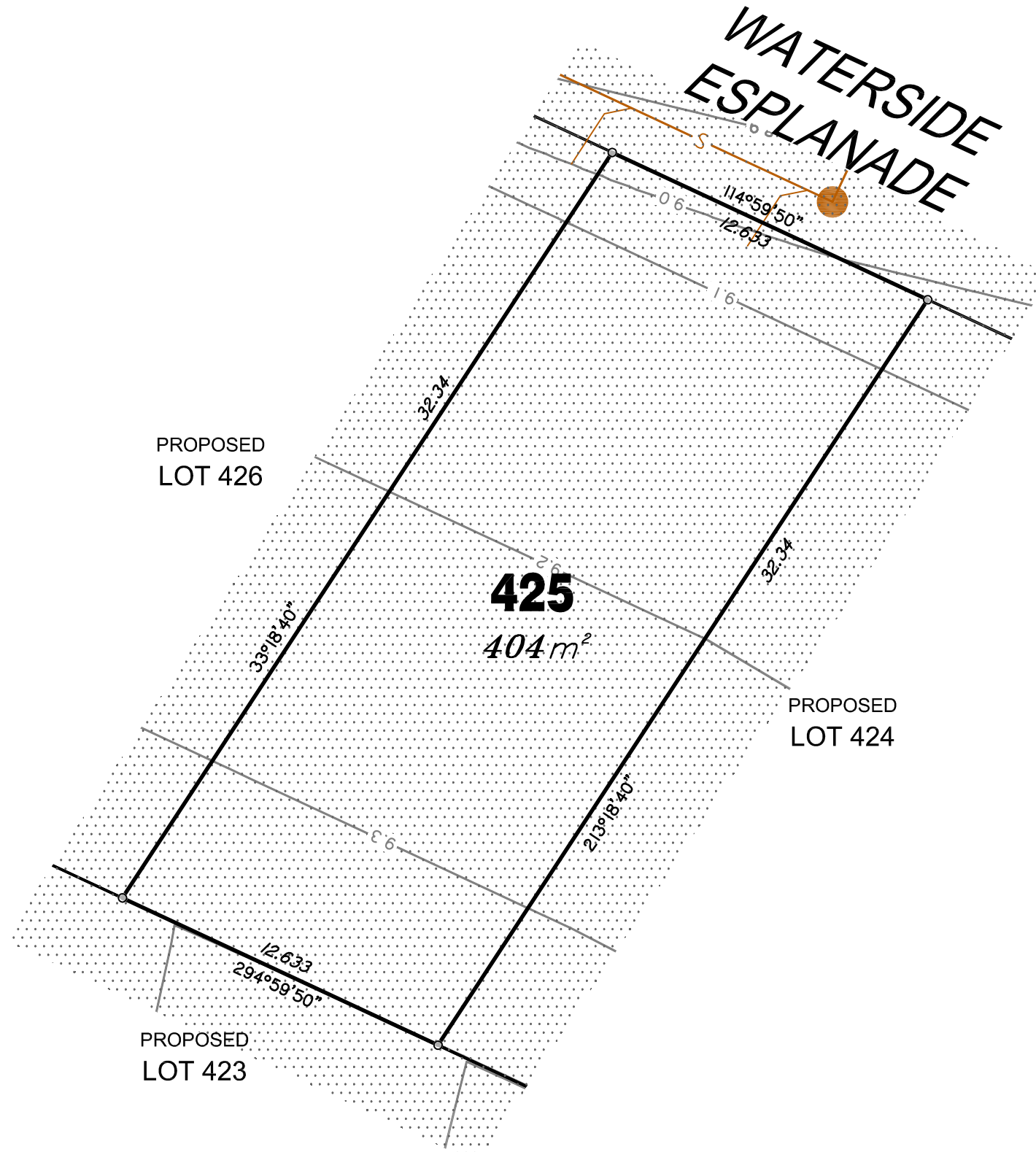
Sewer Manhole/Maintenance Shaft shown as: ●

Roofwater Drainage line shown as: — RWD —

Roofwater Manhole shown as: ●

Roofwater Pit shown as: ■

EXISTING SURFACE LEVELS ARE NOT AVAILABLE WITHIN THE BOUNDARIES OF PROPOSED LOT 425, THEREFORE DEPTHS OF FILL VALUES CANNOT BE ASCERTAINED.



**IMPORTANT NOTES:**  
(These notes are an integral part of this plan)  
This plan has been prepared for PEET & CO for the purposes of a Disclosure Plan Under the Land Sales Act 1984 (as Amended).

It is not to be used by any other person or corporation or for any other purposes and is subject to the following limitations:

The Lot dimensions and area shown herein are subject to final field survey and also to the requirements of Council and any other authority which may have requirements under any relevant legislation.

Design surface contours from the design surface data supplied by Brown Consulting Pty Ltd. Where final surface contours are not shown, no change to existing surface level is proposed.

Compaction of any fill material placed on this site shall be completed under inspection and testing services in accordance with AS3798-2007.

Location of sewer and roofwater lines, manholes and pits are those shown on engineering design drawings and may differ from the as-constructed location.

**THESE DESIGNS AND DRAWINGS ARE COPYRIGHT AND ARE NOT TO BE USED OR REPRODUCED WITHOUT THE WRITTEN PERMISSION OF THG**

**Data Sources**  
Cadastral Boundaries 215809\_1\_LC1(D).dwg  
Design Surface Contours Stage 9 - 12D Design Tin.12da  
Engineering Design X\_806158\_BASE\_MASTER\_2014\_09\_08.dwg

No	Revisions	Date	Chkd
B	Revised to suit new Act	2/12/14	EJM
A	Original	8/9/14	EJM

Parish: CABOOLTURE  
County: STANLEY  
Locality: CABOOLTURE SOUTH  
Local Authority: M.B.R.C  
Horizontal Meridian: SP232377  
Vertical Level Datum: AHD  
Level Origin: PM109474(RL15.112)  
Scale: 1:200 @ A3  
Surveyed: THG WSG Pty Ltd  
Designed: Brown Consulting  
Drawn: EJM  
Checked: MMR  
Plot Date: 03 Dec, 2014  
Computer File Ref: 215809\_5 DPs(B).dwg

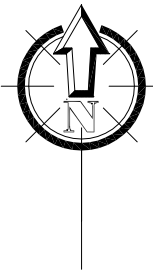
**DISCLOSURE PLAN**  
of Proposed Lot 425  
being part of  
Lot 2 on SP269617



BRISBANE (07) 3666 4700 MACKAY (07) 4951 2911 PROSERPINE (07) 4945 1722  
BOWEN (07) 4786 1050 CAIRNS (07) 4051 6722

Email mail@thg.com.au www.thg.com.au  
ABN 55156210052 THG WSG Pty Ltd t/a THG Resource Strategists

Drawing No 30599-DP425 Issue B



**LEGEND**

Final surface contours based on A.H.D. datum at an interval of 0.1m, shown as: 1:0

Where applicable, areas filled from existing surface are shown as:

Depth of Fill +0.13

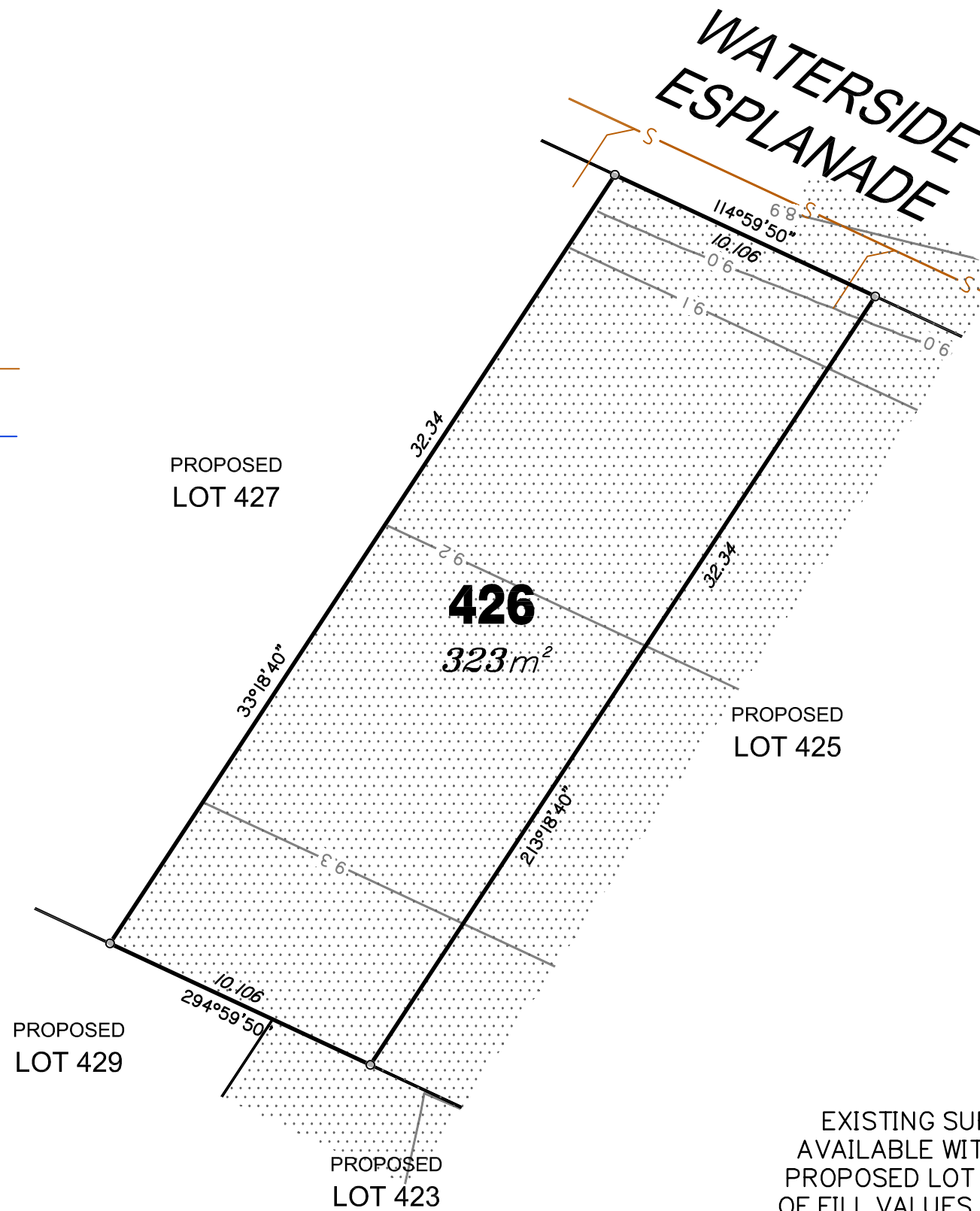
Sewer line shown as:

Sewer Manhole/Maintenance Shaft shown as:

Roofwater Drainage line shown as:

Roofwater Manhole shown as:

Roofwater Pit shown as:



EXISTING SURFACE LEVELS ARE NOT AVAILABLE WITHIN THE BOUNDARIES OF PROPOSED LOT 426, THEREFORE DEPTHS OF FILL VALUES CANNOT BE ASCERTAINED.



**IMPORTANT NOTES:**  
(These notes are an integral part of this plan)  
This plan has been prepared for PEET & CO for the purposes of A Disclosure Plan Under the Land Sales Act 1984 (as Amended).

It is not to be used by any other person or corporation or for any other purposes and is subject to the following limitations:

The Lot dimensions and area shown herein are subject to final field survey and also to the requirements of Council and any other authority which may have requirements under any relevant legislation.

Design surface contours from the design surface data supplied by Brown Consulting Pty Ltd. Where final surface contours are not shown, no change to existing surface level is proposed.

Compaction of any fill material placed on this site shall be completed under inspection and testing services in accordance with AS3798-2007.

Location of sewer and roofwater lines, manholes and pits are those shown on engineering design drawings and may differ from the as-constructed location.

**THESE DESIGNS AND DRAWINGS ARE COPYRIGHT AND ARE NOT TO BE USED OR REPRODUCED WITHOUT THE WRITTEN PERMISSION OF THG**

**Data Sources**  
Cadastral Boundaries 215809\_1\_LC1(D).dwg  
Design Surface Contours Stage 9 - 12D Design Tin.12da  
Engineering Design X\_806158\_BASE\_MASTER\_2014\_09\_08.dwg

No	Revisions	Date	Chkd
B	Revised to suit new Act	2/12/14	EJM
A	Original	8/9/14	EJM

Parish: CABOOLTURE  
County: STANLEY  
Locality: CABOOLTURE SOUTH  
Local Authority: M.B.R.C  
Horizontal Meridian: SP232377  
Vertical Level Datum: AHD  
Level Origin: PM109474(RL15.112)  
Scale: 1:200 @ A3  
Surveyed: THG WSG Pty Ltd  
Designed: Brown Consulting  
Drawn: EJM  
Checked: MMR  
Plot Date: 03 Dec, 2014  
Computer File Ref: 215809\_5\_DPs(B).dwg

**DISCLOSURE PLAN**  
of Proposed Lot 426  
being part of  
Lot 2 on SP269617



BRISBANE (07) 3666 4700  
MACKAY (07) 4951 2911  
PROSERPINE (07) 4945 1722  
BOWEN (07) 4786 1050  
CAIRNS (07) 4051 6722

Email [mail@thg.com.au](mailto:mail@thg.com.au) [www.thg.com.au](http://www.thg.com.au)  
ABN 55156210052 THG WSG Pty Ltd t/a THG Resource Strategists

Drawing No 30599-DP426 Issue B