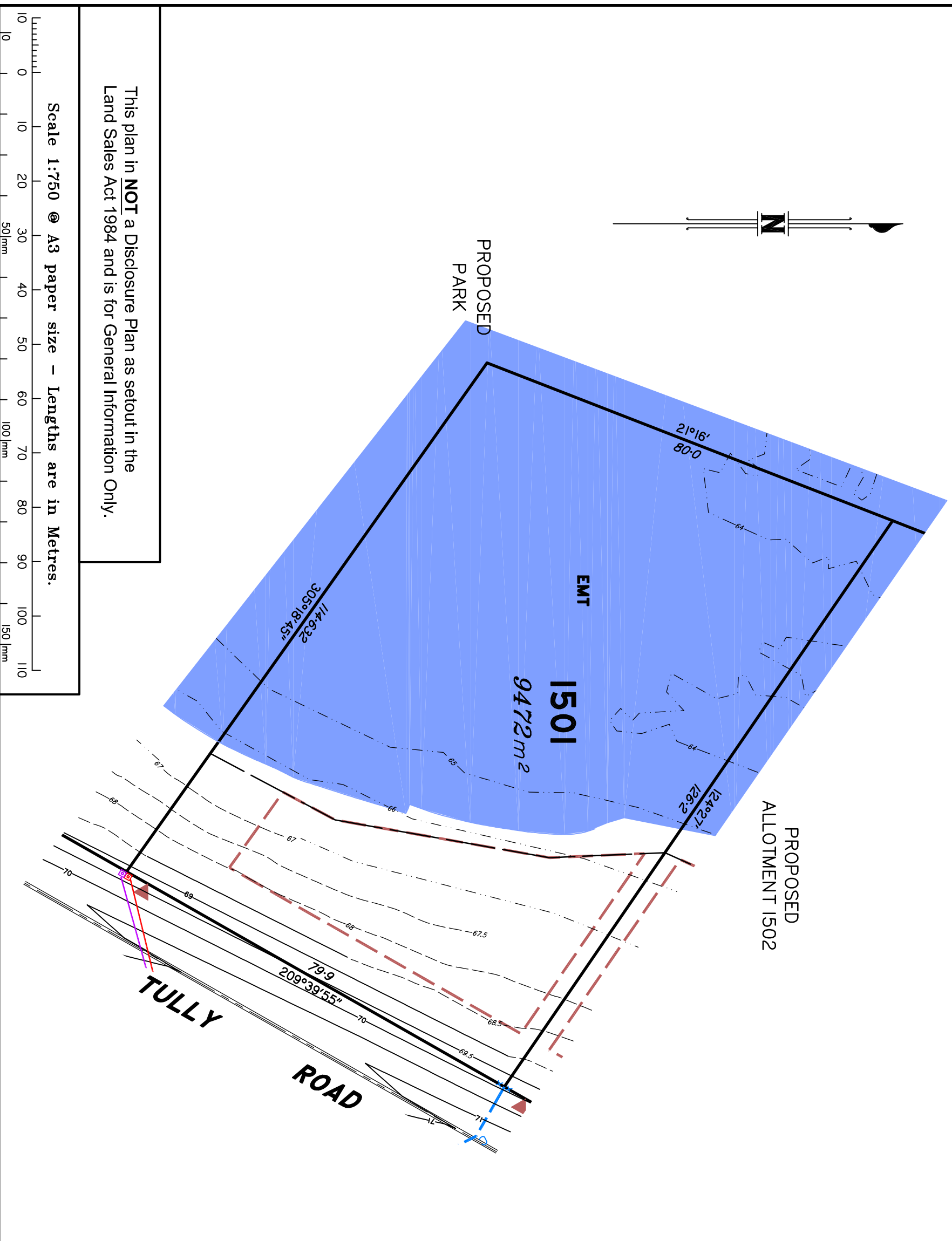
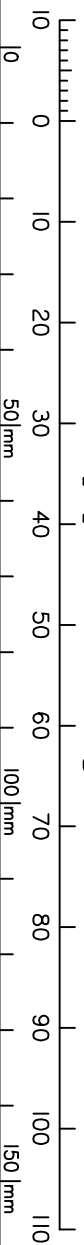


Preliminary
SITE PLAN
 FOR PROPOSED LOT 1501
SPRING MOUNTAIN
 STAGE 15C



This plan in **NOT** a Disclosure Plan as set out in the Land Sales Act 1984 and is for General Information Only.

Scale 1:750 @ A3 paper size – Lengths are in Metres.



LEGEND

Final surface Contours based on A.H.D datum at an interval of 0.5m, shown as:

Surveyed Contours in undisturbed areas at an interval of 0.5m shown:

Natural surface Contours (Lider) in undisturbed areas at an interval of 1.0m shown:

- Q100 Flood Line
- Easement
- Earthworks Batter
- Kerb/Kerb & Channel
- Drainage Line
- Drainage Pit
- Drainage Gully Pit
- Drainage MH
- Drainage Pit & Soakage Trench
- Water Line
- Water Conduit
- Water Service Point of Entry
- Water Stop Valve
- Fire Hydrant
- Underground Comms
- Comms Pit
- Underground Electricity
- Elec Box/Pit
- Street Light
- Indicative Driveway location
- Building Envelope
- Approved Building Envelope
- Plan 7081 P06 BE A
- by Saunders Havill Group see RL/44/2008/H

IMPORTANT NOTES:

This plan has been prepared for PEET Pty Ltd for the purposes of Discussion only.
 All areas and dimensions are subject to final survey and relevant authority approval.
 Location of sewer, roofwater, stormwater, water reticulation, electricity and communication lines, manholes and pits, streetscaping, banks, batters, retaining walls, fencing, footpaths & building envelopes are as shown on engineering design drawings, supplied by KN Group Pty Ltd Consulting Engineers and may differ from the as constructed location. Levels and Contours shown are not to be used for building design or construction. A site survey is required.
 For final building requirements the relevant approved Plan of Development prevail over this site plan.
 These notes form an integral part of this plan and no part of this plan may be reproduced in whole or in part without these notes.

AMENDMENTS

A	DESCRIPTION	DATE
1	EMTs added to Lots 1504 & 1505, Elect & NBN added	19.4.2022
2	EMTs added to Lots 1502 & 1503, Bushtree Trill added	06.9.2022

SCHLECKER SURVEYING (QLD)

Gold Coast ♦ Brisbane
 Consultants in Surveying,
 Mapping & Development

ABN: 36 909 833 411
 PO Box 41, Helensvale QLD 4212

Site 206,
 Helensvale Professional Centre
 3 St. John Overall Dr., Helensvale QLD 4212.

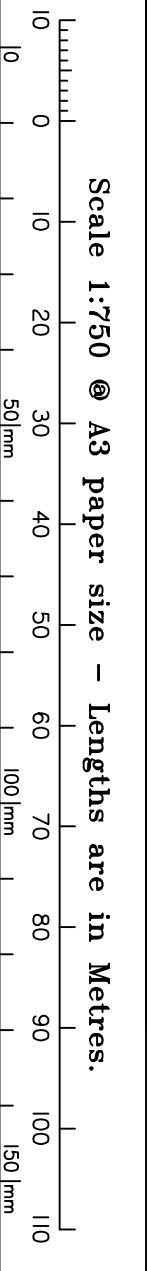
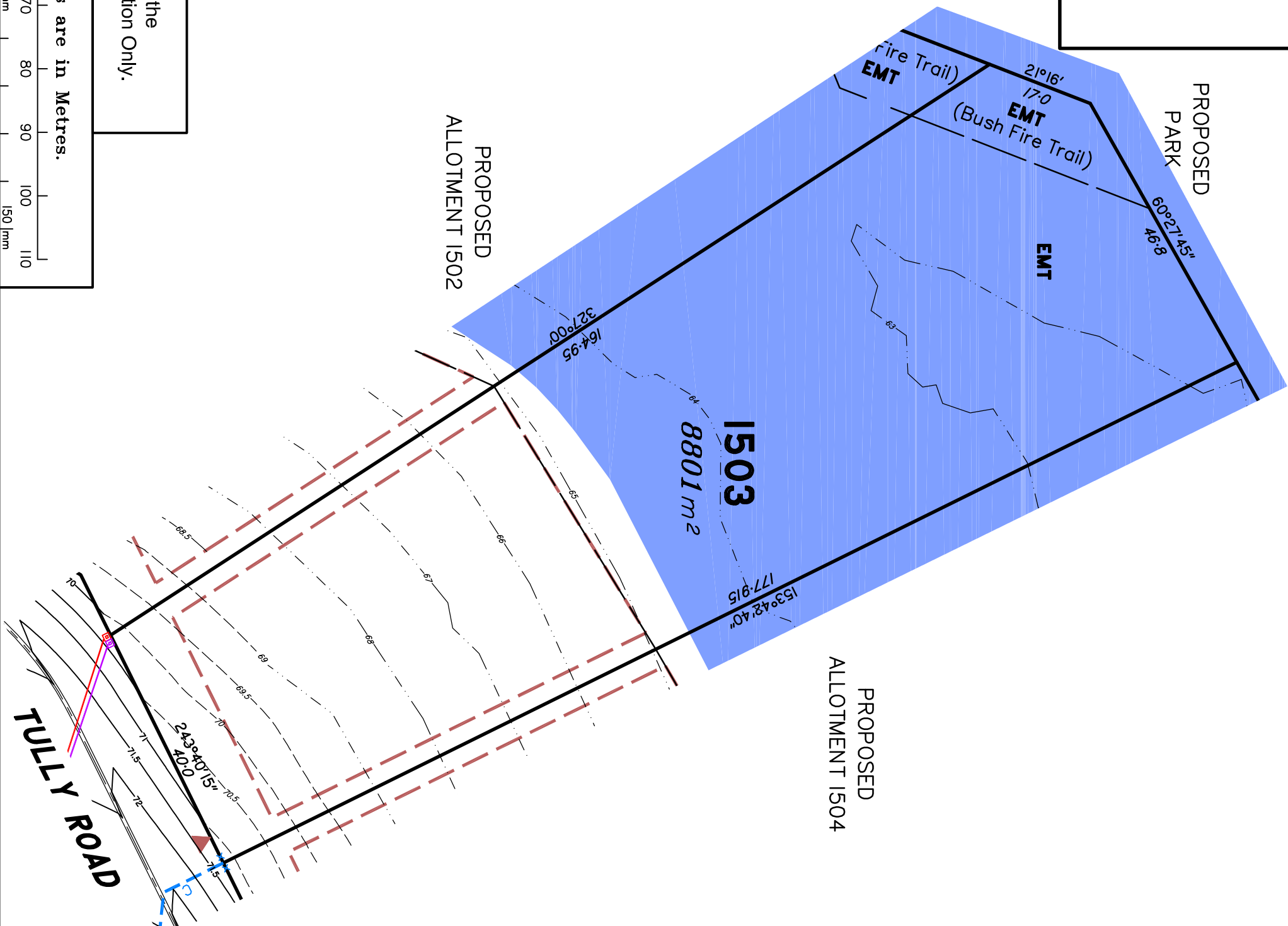


Ph: (07) 5573 6744
 Fax: (07) 5573 6755
 Mob: 0413 945 959
 EMAIL: mail@schlecker.com.au

Preliminary

SITE PLAN

FOR PROPOSED LOT 1503
SPRING MOUNTAIN
STAGE 15C



This plan in **NOT** a Disclosure Plan as set out in the Land Sales Act 1984 and is for General Information Only.



LEGEND

- Final surface Contours based on A.H.D datum at an interval of 0.5m; shown as: 24.0
- Surveyed Contours in undisturbed areas at an interval of 0.5m shown: 24
- Natural surface Contours (Lider) in undisturbed areas at an interval of 1.0m shown: 24
- Q100 Flood Line
- Easement
- Earthworks Batter
- Kerb/Kerb & Channel
- Drainage Line
- Drainage Pit
- Drainage Gully Pit
- Drainage MH
- Drainage Pit & Soakage Trench
- Water Line
- Water Conduit
- Water Service Point of Entry
- Water Stop Valve
- Fire Hydrant
- Underground Comms
- Comms Pit
- Underground Electricity
- Elec Box/Pit
- Street Light
- Indicative Driveway location
- Building Envelope
- in accordance with Approved Building Envelope Plan 7081 P06 BE A
- by Saunders Havill Group see RL/44/2008/H

IMPORTANT NOTES:

This plan has been prepared for PEET Pty Ltd for the purposes of Discussion only.
 All areas and dimensions are subject to final survey and relevant authority approval.
 Location of sewer, roofwater, stormwater, water reticulation, electricity and communication lines, manholes and pits, streetscaping, banks, batters, retaining walls, fencing, footpaths & building envelopes are as shown on engineering design drawings, supplied by KN Group Pty Ltd Consulting Engineers and may differ from the as constructed location. Levels and Contours shown are not to be used for building design or construction. A site survey is required.
 For final building requirements the relevant approved Plan of Development prevail over this site plan.
 These notes form an integral part of this plan and no part of this plan may be reproduced in whole or in part without these notes.

AMENDMENTS

A	DESCRIPTION	DATE
1	Emts added to Lots 1504 & 1505, Elect & NBN added	19.4.2022
2	Emts added to Lots 1502 & 1503, Bushfire Trail added	06.9.2022

SCHLECKER SURVEYING (QLD)

Gold Coast • Brisbane
 Consultants in Surveying,
 Mapping & Development

ABN: 36 909 833 411
 PO Box 41, Helensvale QLD 4212

Site 206,
 Helensvale Professional Centre
 3 St. John Overall Dr., Helensvale QLD 4212.



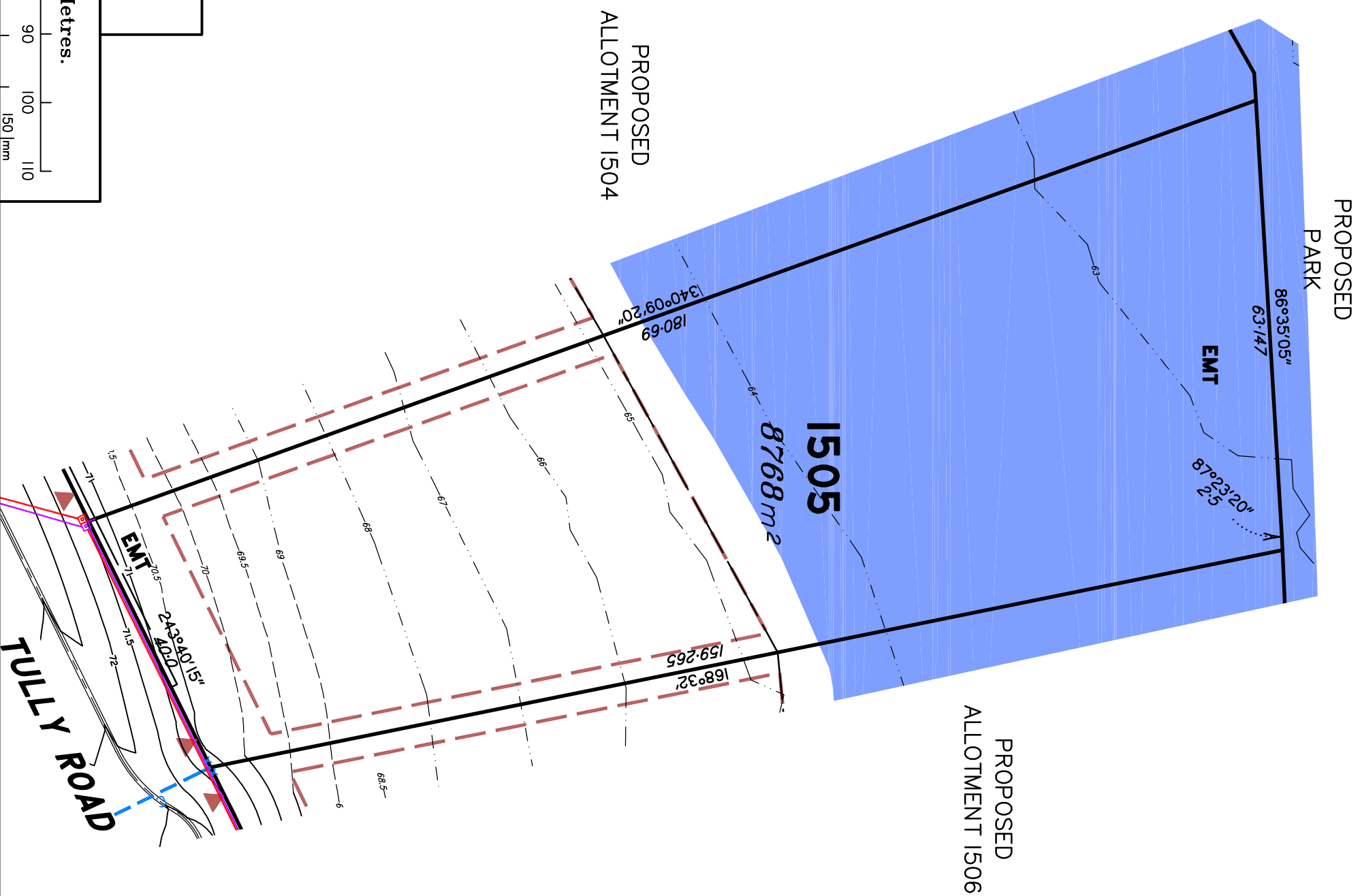
Ph: (07) 5573 6744
 Fax: (07) 5573 6755
 Mob: 0413 945 959
 EMAIL: mail@schlecker.com.au

SCALE @ A3 **1:750** DWG. NO. **15159-52B-1503**

Preliminary

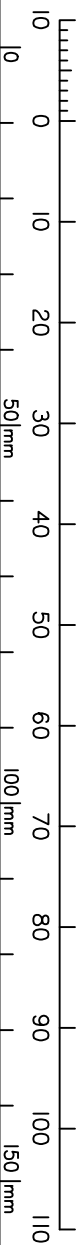
SITE PLAN

FOR PROPOSED LOT 1505
SPRING MOUNTAIN
STAGE 15C



This plan in **NOT** a Disclosure Plan as set out in the Land Sales Act 1984 and is for General Information Only.

Scale 1:750 @ A3 paper size – Lengths are in Metres.



LEGEND

- Final surface Contours based on A.H.D datum at an interval of 0.5m; shown as: 24.0
- Surveyed Contours in undisturbed areas at an interval of 0.5m shown: 24
- Natural surface Contours (Lider) in undisturbed areas at an interval of 1.0m shown: 24
- Q100 Flood Line
- Easement
- Earthworks Batter
- Kerb/Kerb & Channel
- Drainage Line
- Drainage Pit
- Drainage Gully Pit
- Drainage MH
- Drainage Pit & Soakage Trench
- Water Line
- Water Conduit
- Water Service Point of Entry
- Water Stop Valve
- Fire Hydrant
- Underground Comms
- Comms Pit
- Underground Electricity
- Elec Box/Pit
- Street Light
- Indicative Driveway location
- Building Envelope
- in accordance with Approved Building Envelope Plan 7081 P06 BE A
- by Saunders Havill Group see RL/44/2008/H

IMPORTANT NOTES:

This plan has been prepared for PEET Pty Ltd for the purposes of Discussion only.
All areas and dimensions are subject to final survey and relevant authority approval.
Location of sewer, roofwater, stormwater, water reticulation, electricity and communication lines, manholes and pits, streetscaping, banks, batters, retaining walls, fencing, footpaths & building envelopes are as shown on engineering design drawings, supplied by KN Group Pty Ltd Consulting Engineers and may differ from the as constructed location. Levels and Contours shown are not to be used for building design or construction. A site survey is required.
For final building requirements the relevant approved Plan of Development prevail over this site plan.
These notes form an integral part of this plan and no part of this plan may be reproduced in whole or in part without these notes.

AMENDMENTS

A	DESCRIPTION	DATE
1	Emts added to Lots 1504 & 1505, Elect & NBN added	19.4.2022
2	Emts added to Lots 1502 & 1503, Bushtree Trill added	06.9.2022

SCHLECKER SURVEYING (QLD)

Gold Coast ♦ Brisbane
Consultants in Surveying,
Mapping & Development

AB.N. 36 909 833 411
PO Box 41, Helensvale QLD 4212.

Site 206,
Helensvale Professional Centre
35/11 John Overall Dr., Helensvale QLD 4212.

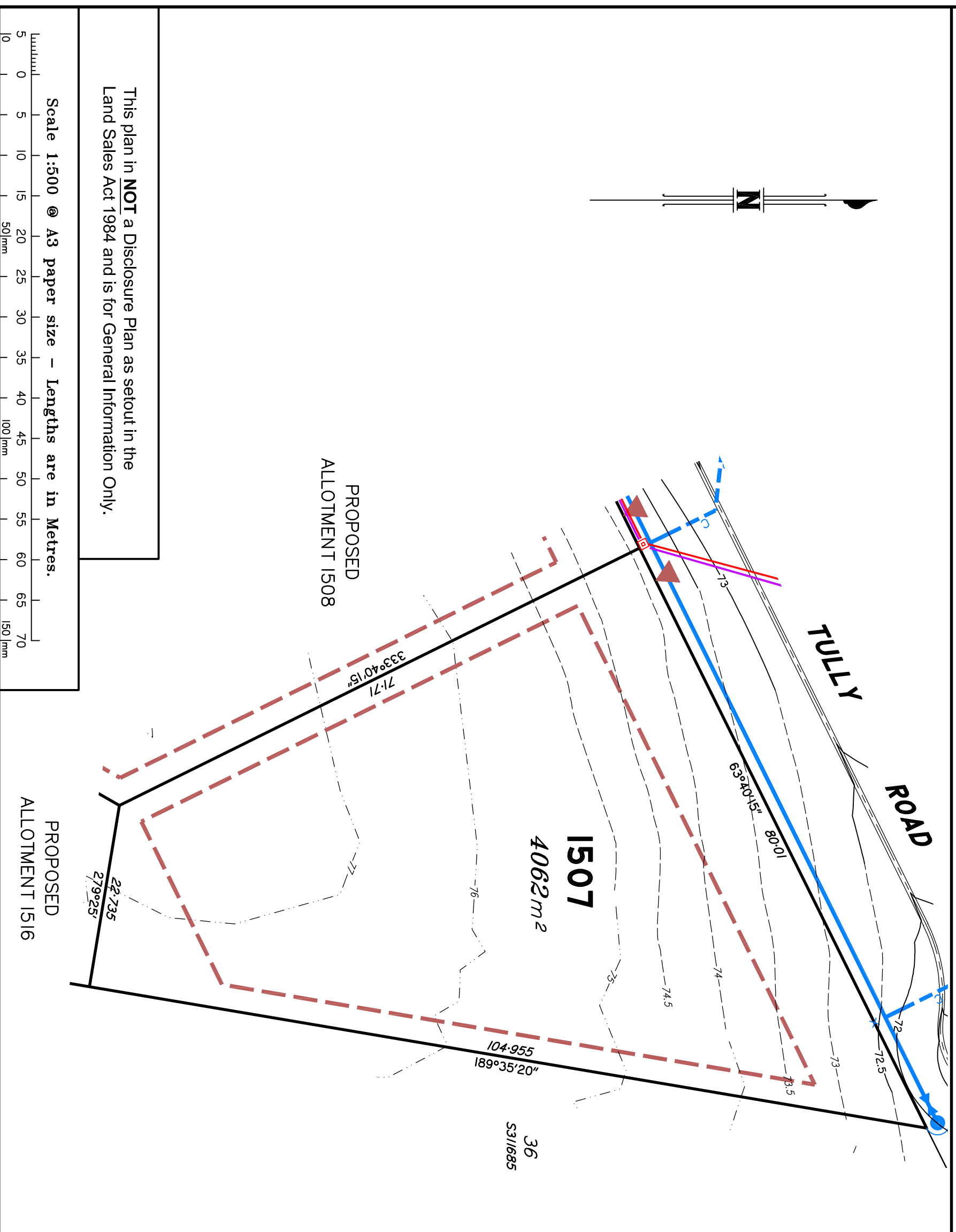


Ph: (07) 5573 6744
Fax: (07) 5573 6755
Mob: 0413 945 959
EMAIL: mail@schlecker.com.au

SCALE @ A3 1:750

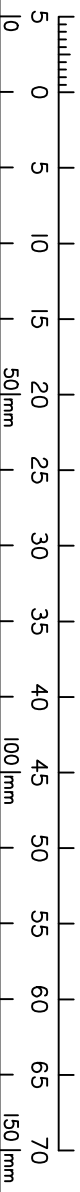
DWG. NO. 15159-52B-1505

Preliminary
SITE PLAN
 FOR PROPOSED LOT 1507
SPRING MOUNTAIN
 STAGE 15C



This plan in **NOT** a Disclosure Plan as set out in the Land Sales Act 1984 and is for General Information Only.

Scale 1:500 @ A3 paper size – Lengths are in Metres.



LEGEND

- Final surface Contours based on A.H.D datum at an interval of 0.5m; shown as: 24.0
- Surveyed Contours in undisturbed areas at an interval of 0.5m shown: 24
- Natural surface Contours (Lider) in undisturbed areas at an interval of 1.0m shown: 24
- Q100 Flood Line
- Easement
- Earthworks Batter
- Kerb/Kerb & Channel
- Drainage Line
- Drainage Pit
- Drainage Gully Pit
- Drainage MH
- Drainage Pit & Soakage Trench
- Water Line
- Water Conduit
- Water Service Point of Entry
- Water Stop Valve
- Fire Hydrant
- Underground Comms
- Comms Pit
- Underground Electricity
- Elec Box/Pit
- Street Light
- Indicative Driveway location
- Building Envelope
- in accordance with Approved Building Envelope Plan 7081 P06 BE A
- by Saunders Havill Group see RL/44/2008/H

IMPORTANT NOTES:

This plan has been prepared for PEET Pty Ltd for the purposes of Discussion only.
 All areas and dimensions are subject to final survey and relevant authority approval.
 Location of sewer, roofwater, stormwater, water reticulation, electricity and communication lines, manholes and pits, streetscaping, banks, batters, retaining walls, fencing, footpaths & building envelopes are as shown on engineering design drawings, supplied by KN Group Pty Ltd Consulting Engineers and may differ from the as constructed location. Levels and Contours shown are not to be used for building design or construction. A site survey is required.
 For final building requirements the relevant approved Plan of Development prevail over this site plan.
 These notes form an integral part of this plan and no part of this plan may be reproduced in whole or in part without these notes.

AMENDMENTS

A	DESCRIPTION	DATE
1	Emts added to Lots 1504 & 1505, Elect & NBN added	19.4.2022
2	Emts added to Lots 1502 & 1503, Busline Trill added	06.9.2022

SCHLECKER SURVEYING (QLD)

Gold Coast ♦ Brisbane
 Consultants in Surveying,
 Mapping & Development

ABN: 36 909 833 411
 PO Box 41, Helensvale QLD 4212

Site 206,
 Helensvale Professional Centre
 3 St John Overall Dr., Helensvale QLD 4212.

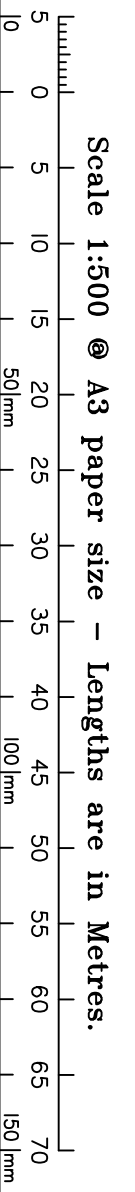
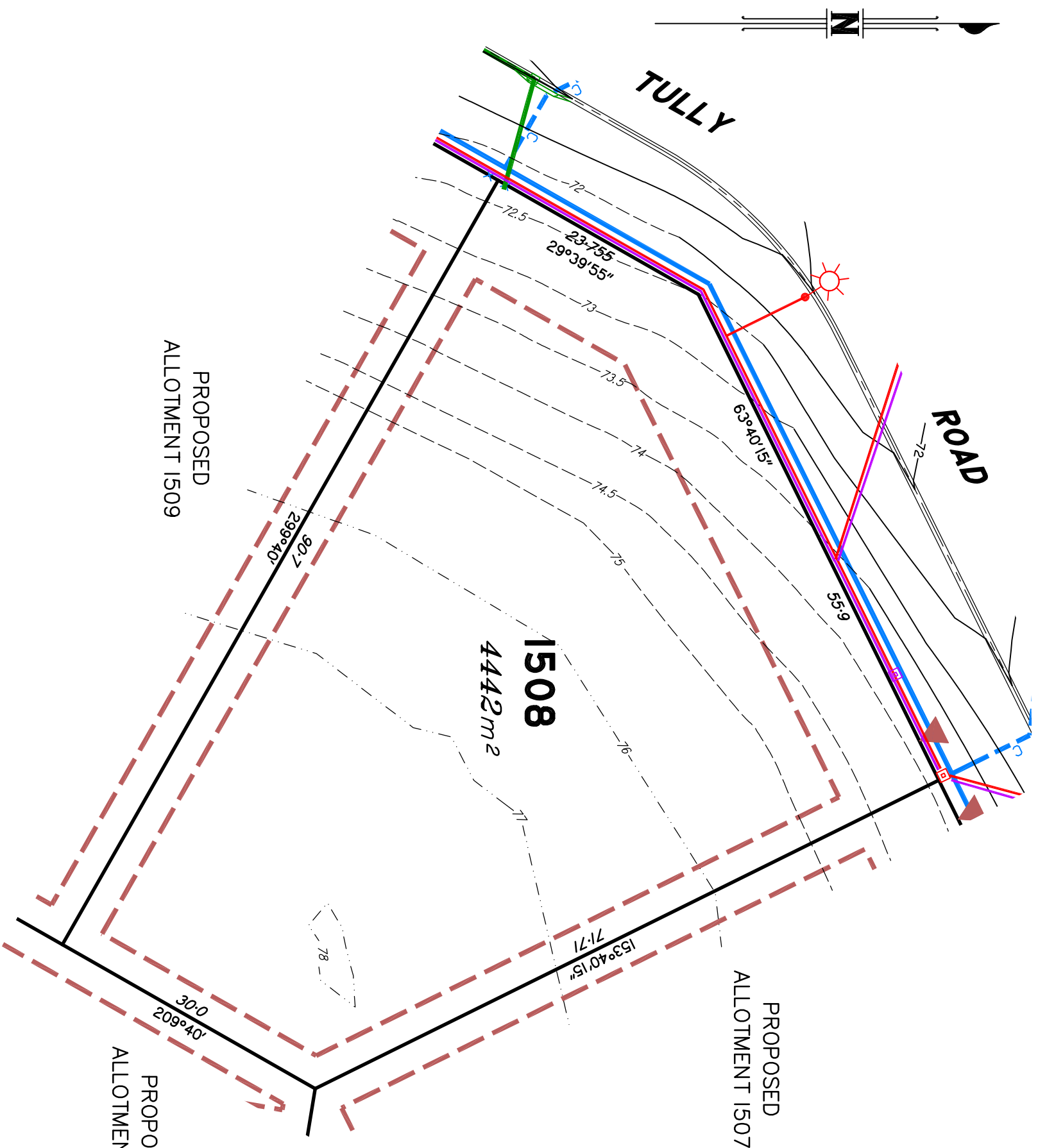


Ph: (07) 5573 6744
 Fax: (07) 5573 6755
 Mobs: 0413 945 959
 EMAIL: mail@schlecker.com.au

SCALE @ A3 1:500

DWG. NO. 15159-52B-1507

Preliminary
SITE PLAN
 FOR PROPOSED LOT 1508
SPRING MOUNTAIN
 STAGE 15C



This plan in **NOT** a Disclosure Plan as setout in the Land Sales Act 1984 and is for General Information Only.

LEGEND

- Final surface Contours based on A.H.D datum at an interval of 0.5m, shown as: ——— 24.0 ———
- Surveyed Contours in undisturbed areas at an interval of 0.5m shown: - - - - - 24 - - - - -
- Natural surface Contours (Lider) in undisturbed areas at an interval of 1.0m shown: - - - - - 24 - - - - -
- Q100 Flood Line
- Easement
- Earthworks Batter
- Kerb/Kerb & Channel
- Drainage Line
- Drainage Pit
- Drainage Gully Pit
- Drainage MH
- Drainage Pit & Soakage Trench
- Water Line
- Water Conduit
- Water Service Point of Entry
- Water Stop Valve
- Fire Hydrant
- Underground Comms
- Comms Pit
- Underground Electricity
- Elec Box/Pit
- Street Light
- Indicative Driveway location
- Building Envelope
- in accordance with Approved Building Envelope Plan 7081 P06 BE A
- by Saunders Havill Group see RL/44/2008/H

IMPORTANT NOTES:

This plan has been prepared for PEET Pty Ltd for the purposes of Discussion only.
 All areas and dimensions are subject to final survey and relevant authority approval.
 Location of sewer, roofwater, stormwater, water reticulation, electricity and communication lines, manholes and pits, streetscaping, banks, batters, retaining walls, fencing, footpaths & building envelopes are as shown on engineering design drawings, supplied by KN Group Pty Ltd Consulting Engineers and may differ from the as constructed location. Levels and Contours shown are not to be used for building design or construction. A site survey is required.
 For final building requirements the relevant approved Plan of Development prevail over this site plan.
 These notes form an integral part of this plan and no part of this plan may be reproduced in whole or in part without these notes.

AMENDMENTS

NO	DESCRIPTION	DATE
A	Emts added to Lots 1504 & 1505, Elect & NBN added	19.4.2022
B	Emts added to Lots 1502 & 1503, Busline Trill added	06.9.2022

SCHLECKER SURVEYING (QLD)

Gold Coast ♦ Brisbane
 Consultants in Surveying,
 Mapping & Development



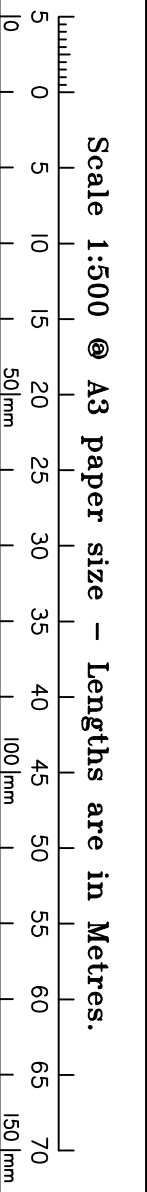
A.B.N. 36 909 833 411
 PO Box 41, Helensvale QLD 4212
 Site 206,
 Helensvale Professional Centre
 3 St John Overall Dr., Helensvale QLD 4212.
 P.h.: (07) 5573 6744
 F.a.x: (07) 5573 6755
 M.o.b.: 0413 945 959
 E.M.A.I.L: mail@schlecker.com.au

SCALE @ A3 **1:500** DWG. NO. **15159-52B-1508**

Preliminary

SITE PLAN

FOR PROPOSED LOT 1509
SPRING MOUNTAIN
 STAGE 15C



This plan in **NOT** a Disclosure Plan as setout in the Land Sales Act 1984 and is for General Information Only.

LEGEND

- Final surface Contours based on A.H.D datum at an interval of 0.5m, shown as: 24.0
- Surveyed Contours in undisturbed areas at an interval of 0.5m shown: 24
- Natural surface Contours (Lider) in undisturbed areas at an interval of 1.0m shown: 24
- Q100 Flood Line
- Easement
- Earthworks Batter
- Kerb/Kerb & Channel
- Drainage Line
- Drainage Pit
- Drainage Gully Pit
- Drainage MH
- Drainage Pit & Soakage Trench
- Water Line
- Water Conduit
- Water Service Point of Entry
- Water Stop Valve
- Fire Hydrant
- Underground Comms
- Comms Pit
- Underground Electricity
- Elec Box/Pit
- Street Light
- Indicative Driveway location
- Building Envelope
- in accordance with Approved Building Envelope Plan 7081 P06 BE A
- by Saunders Havill Group see RL/44/2008/H

IMPORTANT NOTES:

This plan has been prepared for PEET Pty Ltd for the purposes of Discussion only.
 All areas and dimensions are subject to final survey and relevant authority approval.
 Location of sewer, roofwater, stormwater, water reticulation, electricity and communication lines, manholes and pits, streetscaping, banks, batters, retaining walls, fencing, footpaths & building envelopes are as shown on engineering design drawings, supplied by KN Group Pty Ltd Consulting Engineers and may differ from the as constructed location. Levels and Contours shown are not to be used for building design or construction. A site survey is required.
 For final building requirements the relevant approved Plan of Development prevail over this site plan.
 These notes form an integral part of this plan and no part of this plan may be reproduced in whole or in part without these notes.

AMENDMENTS

A	DESCRIPTION	DATE
1	Emts added to Lots 1504 & 1505, Elect & NBN added	19.4.2022
2	Emts added to Lots 1502 & 1503, Bushtree Trill added	06.9.2022

SCHLECKER SURVEYING (QLD)

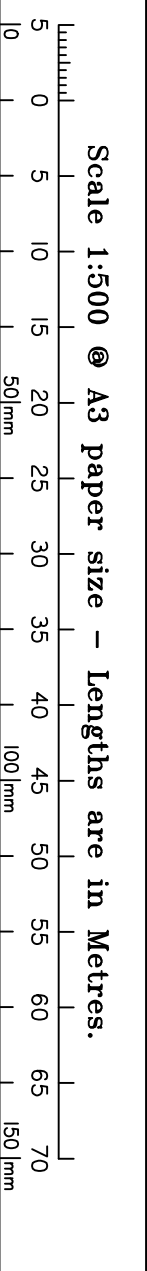
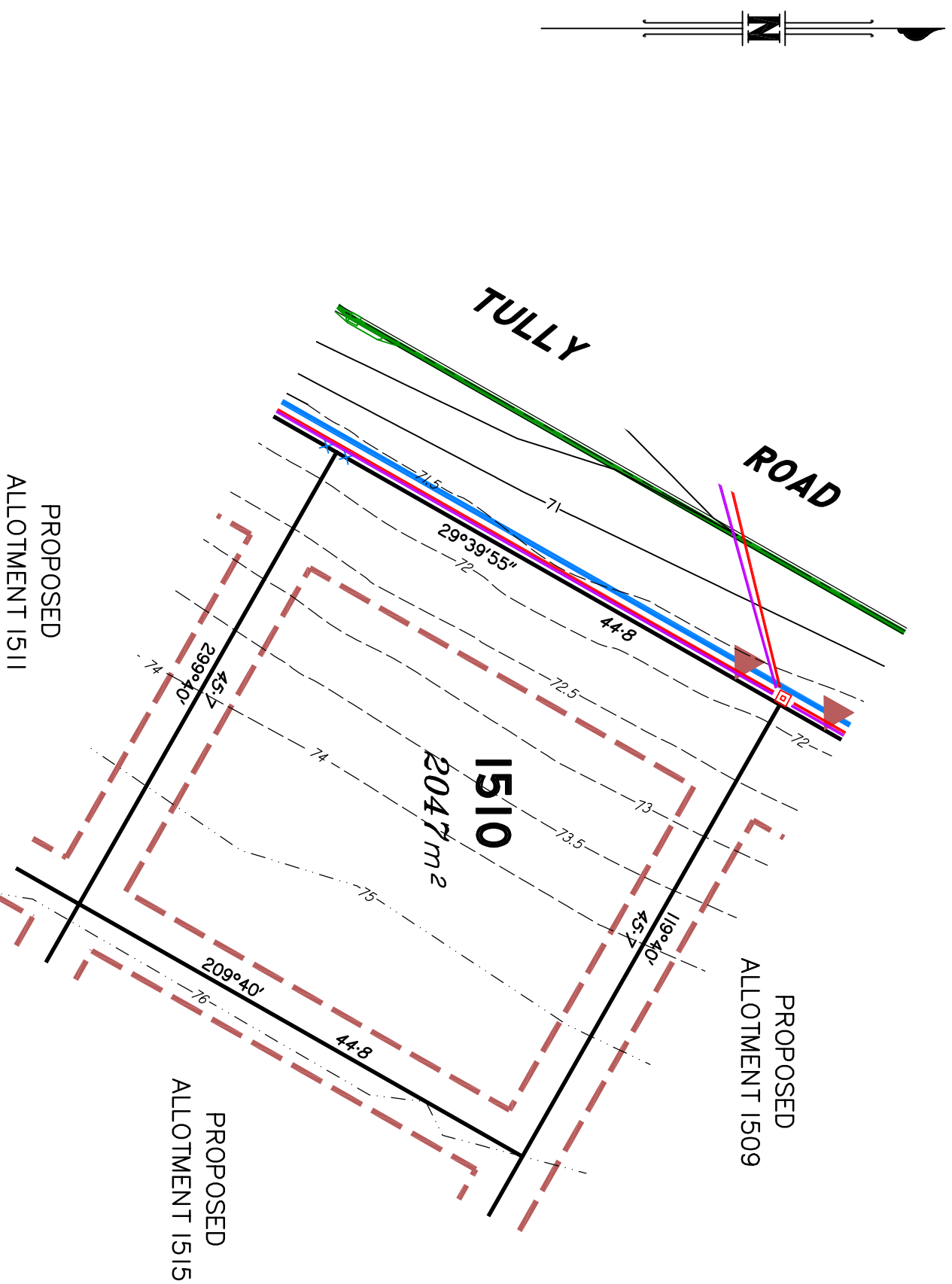
Gold Coast ♦ **Brisbane**
 Consultants in Surveying,
 Mapping & Development



A.B.N. 36 909 833 411
 PO Box 41, Helensvale QLD 4212
 Site 206,
 Helensvale Professional Centre
 3 St John Overall Dr., Helensvale QLD 4212.
 P.h.: (07) 5573 6744
 F.h.x: (07) 5573 6755
 M.ob.: 0413 945 959
 E.M.A.I.L.: mail@schlecker.qld.au

SCALE ● A3 **1:500** DWG. NO. **15159-52B-1509**

Preliminary
SITE PLAN
 FOR PROPOSED LOT 1510
SPRING MOUNTAIN
 STAGE 15C



This plan in **NOT** a Disclosure Plan as setout in the Land Sales Act 1984 and is for General Information Only.

LEGEND

- Final surface Contours based on A.H.D datum at an interval of 0.5m, shown as: 24.0
- Surveyed Contours in undisturbed areas at an interval of 0.5m shown: 24
- Natural surface Contours (Lidar) in undisturbed areas at an interval of 1.0m shown: 24
- Q100 Flood Line
- Easement
- Earthworks Batter
- Kerb/Kerb & Channel
- Drainage Line
- Drainage Pit
- Drainage Gully Pit
- Drainage MH
- Drainage Pit & Soakage Trench
- Water Line
- Water Conduit
- Water Service Point of Entry
- Water Stop Valve
- Fire Hydrant
- Underground Comms
- Comms Pit
- Underground Electricity
- Elec Box/Pit
- Street Light
- Indicative Driveway location
- Building Envelope
- in accordance with Approved Building Envelope Plan 7081 P06 BE A by Saunders Havill Group see RL/44/2008/H

IMPORTANT NOTES:

This plan has been prepared for PEET Pty Ltd for the purposes of Discussion only.
 All areas and dimensions are subject to final survey and relevant authority approval.
 Location of sewer, roofwater, stormwater, water reticulation, electricity and communication lines, manholes and pits, streetscaping, banks, batters, retaining walls, fencing, footpaths & building envelopes are as shown on engineering design drawings, supplied by KN Group Pty Ltd Consulting Engineers and may differ from the as constructed location. Levels and Contours shown are not to be used for building design or construction. A site survey is required.
 For final building requirements the relevant approved Plan of Development prevail over this site plan.
 These notes form an integral part of this plan and no part of this plan may be reproduced in whole or in part without these notes.

AMENDMENTS

NO.	DESCRIPTION	DATE
A	Emts added to Lots 1504 & 1505, Elect & NBN added	19.4.2022
B	Emts added to Lots 1502 & 1503, Busline Trill added	06.9.2022

SCHLECKER SURVEYING (QLD)

Gold Coast ♦ Brisbane
 Consultants in Surveying,
 Mapping & Development



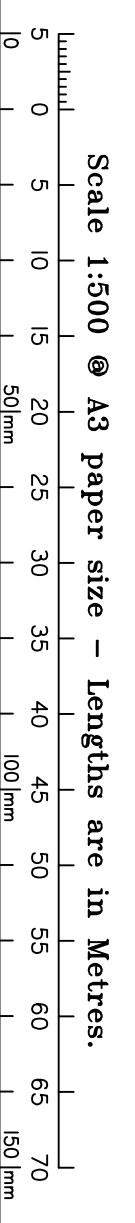
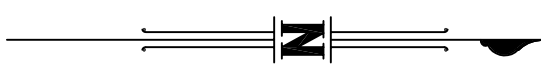
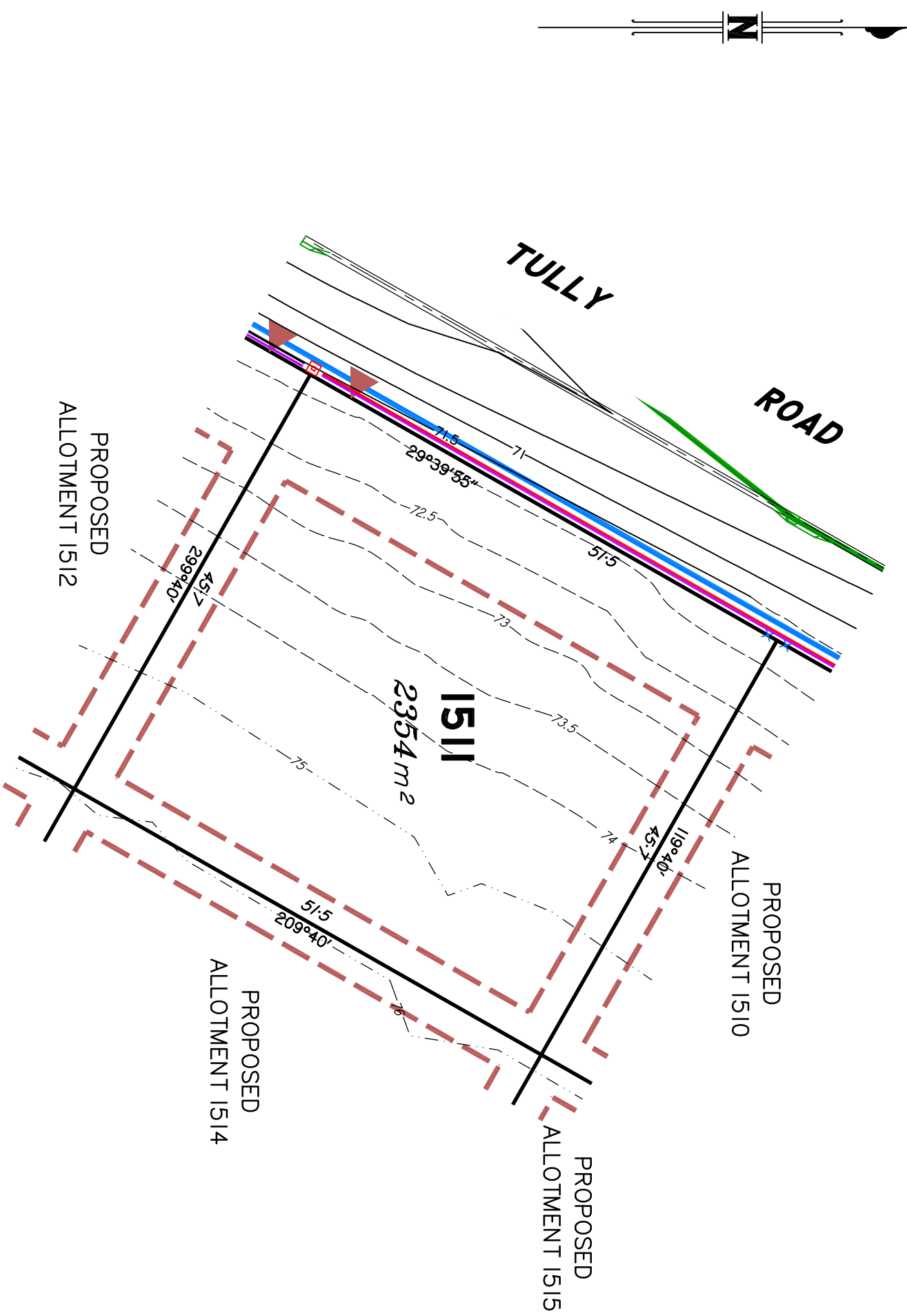
A.B.N. 36 909 833 411
 PO Box 41, Helensvale QLD 4212
 Site 206,
 Helensvale Professional Centre
 3 St John Overall Dr., Helensvale QLD 4212.
 Pn: (07) 5573 6744
 Fax: (07) 5573 6755
 Mod: 0413 945 959
 EMAIL: mail@schlecker.com.au

SCALE @ A3 **1:500** DWG. NO. **15159-52B-1510**

Preliminary

SITE PLAN

FOR PROPOSED LOT 1511
SPRING MOUNTAIN STAGE 15C



This plan in **NOT** a Disclosure Plan as setout in the Land Sales Act 1984 and is for General Information Only.

LEGEND

- Final surface Contours based on A.H.D datum at an interval of 0.5m, shown as:
 - 24.0 ———
- Surveyed Contours in undisturbed areas at an interval of 0.5m shown:
 - 24 - - - -
- Natural surface Contours (Lider) in undisturbed areas at an interval of 1.0m shown:
 - 24 - - - -
- Q100 Flood Line
 -
- Easement
 -
- Earthworks Batter
 -
- Kerb/Kerb & Channel
 -
- Drainage Line
 -
- Drainage Pit
 -
- Drainage Gully Pit
 -
- Drainage MH
 -
- Drainage Pit & Soakage Trench
 -
- Water Line
 -
- Water Conduit
 -
- Water Service Point of Entry
 -
- Water Stop Valve
 -
- Fire Hydrant
 -
- Underground Comms
 -
- Comms Pit
 -
- Underground Electricity
 -
- Elec Box/Pit
 -
- Street Light
 -
- Indicative Driveway location
 -
- Building Envelope
 -
- Approved Building Envelope
 -
- Plan 7081 P06 BE A
 by Saunders Havill Group see RL/44/2008/H

IMPORTANT NOTES:

This plan has been prepared for PEET Pty Ltd for the purposes of Discussion only.
 All areas and dimensions are subject to final survey and relevant authority approval.
 Location of sewer, roofwater, stormwater, water reticulation, electricity and communication lines, manholes and pits, streetscaping, banks, batters, retaining walls, fencing, footpaths & building envelopes are as shown on engineering design drawings, supplied by KN Group Pty Ltd Consulting Engineers and may differ from the as constructed location. Levels and Contours shown are not to be used for building design or construction. A site survey is required.
 For final building requirements the relevant approved Plan of Development prevail over this site plan.
 These notes form an integral part of this plan and no part of this plan may be reproduced in whole or in part without these notes.

AMENDMENTS

NO.	DESCRIPTION	DATE
A	Emts added to Lots 1504 & 1505, Elect & NBN added	19.4.2022
B	Emts added to Lots 1502 & 1503, Busline Trill added	06.9.2022

SCHLECKER SURVEYING (QLD)

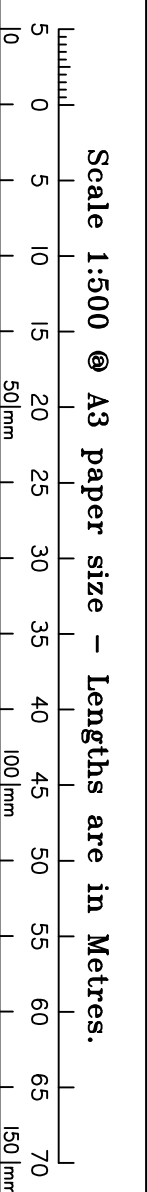
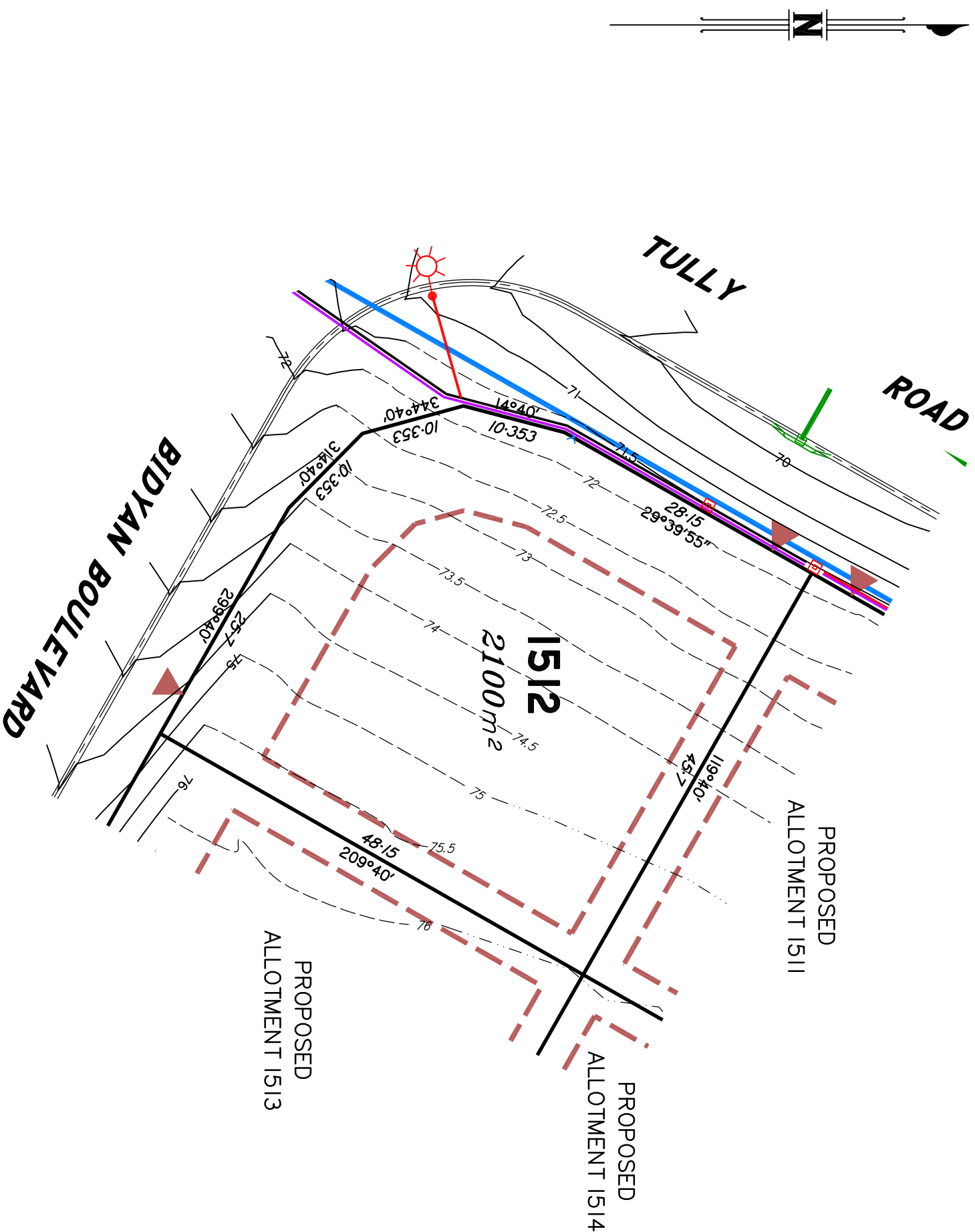
Gold Coast ♦ Brisbane
 Consultants in Surveying,
 Mapping & Development



A.B.N. 36 909 833 411
 PO Box 41, Helensvale QLD 4212
 Site 206,
 Helensvale Professional Centre
 3 St John Overall Dr., Helensvale QLD 4212.
 P.h.: (07) 5573 6744
 F.h.x: (07) 5573 6755
 M.ob.: 0413 945 959
 E.M.A.I.L.: mail@schlecker.qld.au

SCALE ● A3 **1:500** DWG. NO. **15159-52B-1511**

Preliminary
SITE PLAN
 FOR PROPOSED LOT 1512
SPRING MOUNTAIN
STAGE 15C



This plan in **NOT** a Disclosure Plan as setout in the Land Sales Act 1984 and is for General Information Only.

LEGEND

- Final surface Contours based on A.H.D datum at an interval of 0.5m, shown as:
 - 24.0 —
- Surveyed Contours in undisturbed areas at an interval of 0.5m shown:
 - 24 ---
- Natural surface Contours (Lider) in undisturbed areas at an interval of 1.0m shown:
 - 24 ---
- Q100 Flood Line
- Easement
- Earthworks Batter
- Kerb/Kerb & Channel
- Drainage Line
- Drainage Pit
- Drainage Gully Pit
- Drainage MH
- Drainage Pit & Soakage Trench
- Water Line
- Water Conduit
- Water Service Point of Entry
- Water Stop Valve
- Fire Hydrant
- Underground Comms
- Comms Pit
- Underground Electricity
- Elec Box/Pit
- Street Light
- Indicative Driveway location
- Building Envelope
- in accordance with
- Approved Building Envelope
- Plan 7081 P06 BE A
- by Saunders Havill Group see RL/44/2008/H

IMPORTANT NOTES:

This plan has been prepared for PEET Pty Ltd for the purposes of Discussion only.
 All areas and dimensions are subject to final survey and relevant authority approval.
 Location of sewer, roofwater, stormwater, water reticulation, electricity and communication lines, manholes and pits, streetscaping, banks, batters, retaining walls, fencing, footpaths & building envelopes are as shown on engineering design drawings, supplied by KN Group Pty Ltd Consulting Engineers and may differ from the as constructed location. Levels and Contours shown are not to be used for building design or construction. A site survey is required.
 For final building requirements the relevant approved Plan of Development prevail over this site plan.
 These notes form an integral part of this plan and no part of this plan may be reproduced in whole or in part without these notes.

AMENDMENTS

DESCRIPTION	DATE
A. Emtis added to Lots 1504 & 1505, Elect & NBN added	19.4.2022
B. Emtis added to Lots 1502 & 1503, Bushtree Trill added	06.9.2022

SCHLECKER SURVEYING (QLD)

Gold Coast ♦ Brisbane
 Consultants in Surveying,
 Mapping & Development



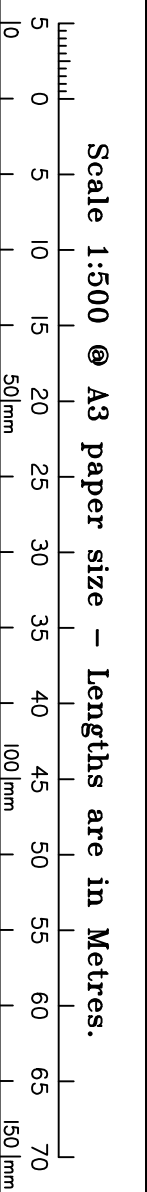
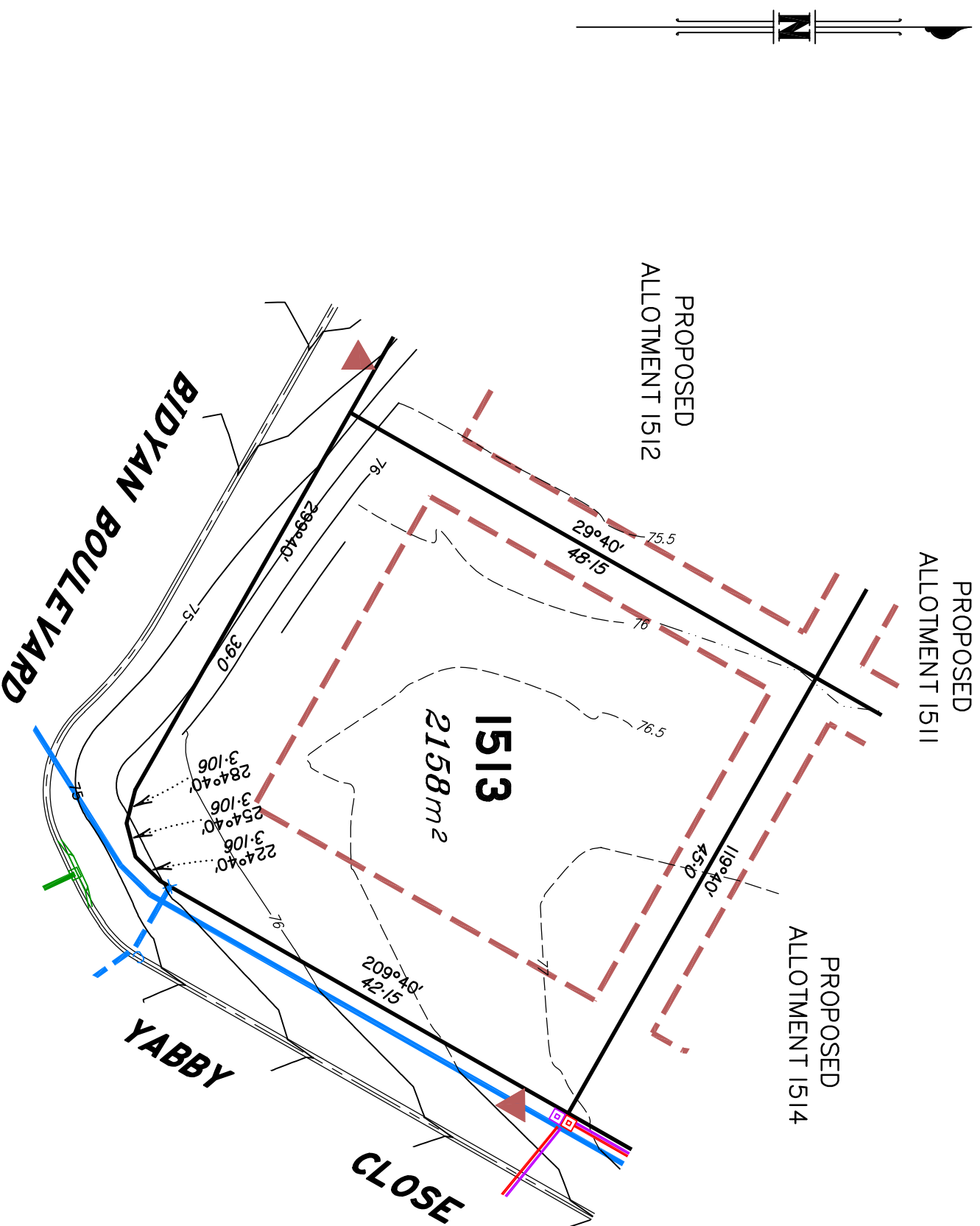
A.B.N. 36 909 833 411
 PO Box 41, Helensvale QLD 4212

Site 206,
 Helensvale Professional Centre
 3 St John Overall Dr., Helensvale QLD 4212.
 P/n: (07) 5573 6744
 F/n: (07) 5573 6755
 M/n: 0413 945 959
 EMAIL: mail@schlecker.com.au

SCALE @ A3 **1:500**

DWG. NO. **15159-52B-1512**

Preliminary
SITE PLAN
 FOR PROPOSED LOT 1513
SPRING MOUNTAIN
STAGE 15C



This plan in NOT a Disclosure Plan as setout in the Land Sales Act 1984 and is for General Information Only.

LEGEND

- Final surface Contours based on A.H.D datum at an interval of 0.5m, shown as: — 24.0 —
- Surveyed Contours in undisturbed areas at an interval of 0.5m shown: - - - 24 - - -
- Natural surface Contours (Lider) in undisturbed areas at an interval of 1.0m shown: - - - 24 - - -
- Q100 Flood Line
- Easement
- Earthworks Batter
- Kerb/Kerb & Channel
- Drainage Line
- Drainage Pit
- Drainage Gully Pit
- Drainage MH
- Drainage Pit & Soakage Trench
- Water Line
- Water Conduit
- Water Service Point of Entry
- Water Stop Valve
- Fire Hydrant
- Underground Comms
- Comms Pit
- Underground Electricity
- Elec Box/Pit
- Street Light
- Indicative Driveway location
- Building Envelope
- in accordance with
- Approved Building Envelope
- Plan 7081 P06 BE A
- by Saunders Havill Group see RL/44/2008/H

IMPORTANT NOTES:

This plan has been prepared for PEET Pty Ltd for the purposes of Discussion only.
 All areas and dimensions are subject to final survey and relevant authority approval.
 Location of sewer, roofwater, stormwater, water reticulation, electricity and communication lines, manholes and pits, streetscaping, banks, batters, retaining walls, fencing, footpaths & building envelopes are as shown on engineering design drawings, supplied by KN Group Pty Ltd Consulting Engineers and may differ from the as constructed location. Levels and Contours shown are not to be used for building design or construction. A site survey is required.
 For final building requirements the relevant approved Plan of Development prevail over this site plan.
 These notes form an integral part of this plan and no part of this plan may be reproduced in whole or in part without these notes.

AMENDMENTS

A	DESCRIPTION	DATE
1	Emts added to Lots 1504 & 1505, Elect & NBN added	19.4.2022
2	Emts added to Lots 1502 & 1503, Busline Trill added	16.2.2022

SCHLECKER SURVEYING (QLD)

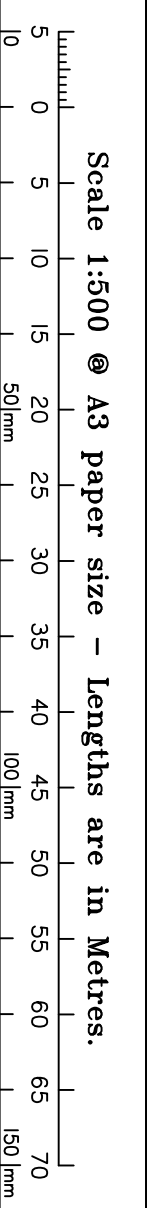
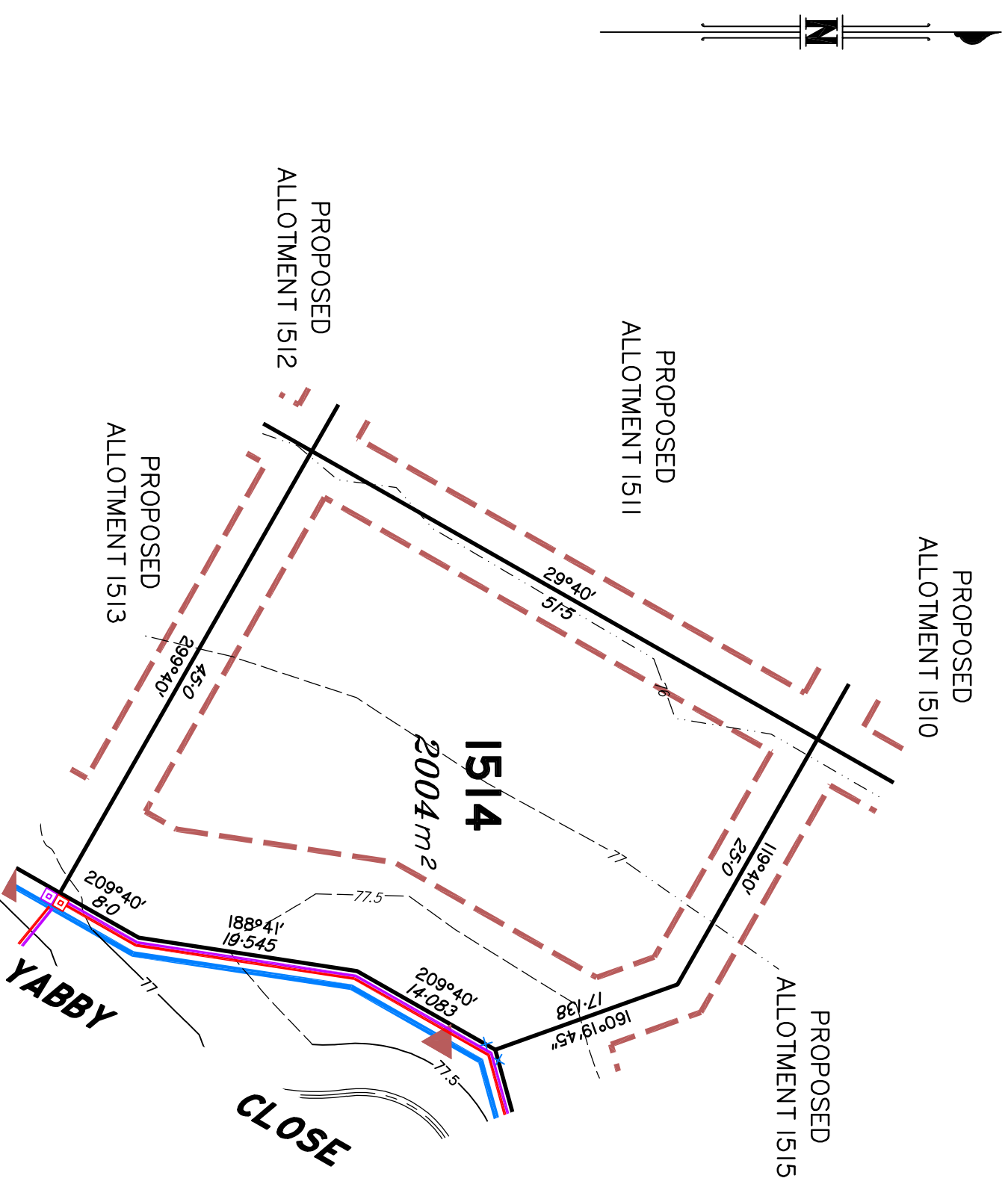
Gold Coast ♦ Brisbane
 Consultants in Surveying,
 Mapping & Development



ABN: 36 909 833 411
 PO Box 41, Helensvale QLD 4212
 Site 206,
 Helensvale Professional Centre
 3 St John Overall Dr., Helensvale QLD 4212.
 Pn: (07) 5573 6744
 Fax: (07) 5573 6755
 Mob: 0413 945 959
 EMAIL: mail@schlecker.com.au

SCALE ● A3 **1:500** DWG. NO. **15159-52B-1513**

Preliminary
SITE PLAN
 FOR PROPOSED LOT 1514
SPRING MOUNTAIN
STAGE 15C



This plan in **NOT** a Disclosure Plan as setout in the Land Sales Act 1984 and is for General Information Only.

LEGEND

- Final surface Contours based on A.H.D datum at an interval of 0.5m; shown as: 24.0
- Surveyed Contours in undisturbed areas at an interval of 0.5m shown: 24
- Natural surface Contours (Lider) in undisturbed areas at an interval of 1.0m shown: 24
- Q100 Flood Line
- Easement
- Earthworks Batter
- Kerb/Kerb & Channel
- Drainage Line
- Drainage Pit
- Drainage Gully Pit
- Drainage MH
- Drainage Pit & Soakage Trench
- Water Line
- Water Conduit
- Water Service Point of Entry
- Water Stop Valve
- Fire Hydrant
- Underground Comms
- Comms Pit
- Underground Electricity
- Elec Box/Pit
- Street Light
- Indicative Driveway location
- Building Envelope
- in accordance with Approved Building Envelope Plan 7081 P06 BE A
- by Saunders Havill Group see RL/44/2008/H

IMPORTANT NOTES:

This plan has been prepared for PEET Pty Ltd for the purposes of Discussion only.
 All areas and dimensions are subject to final survey and relevant authority approval.
 Location of sewer, roofwater, stormwater, water reticulation, electricity and communication lines, manholes and pits, streetscaping, banks, batters, retaining walls, fencing, footpaths & building envelopes are as shown on an engineering design drawings, supplied by KN Group Pty Ltd Consulting Engineers and may differ from the as constructed location. Levels and Contours shown are not to be used for building design or construction. A site survey is required.
 For final building requirements the relevant approved Plan of Development prevail over this site plan.
 These notes form an integral part of this plan and no part of this plan may be reproduced in whole or in part without these notes.

AMENDMENTS

NO.	DESCRIPTION	DATE
A	Emts added to Lots 1504 & 1505, Elect & NBN added	19.4.2022
B	Emts added to Lots 1502 & 1503, Busline T-oll added	16.12.22

SCHLECKER SURVEYING (QLD)

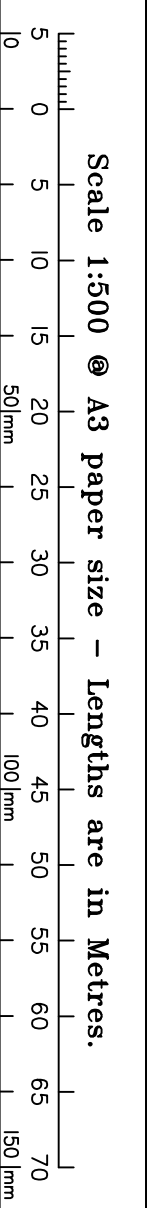
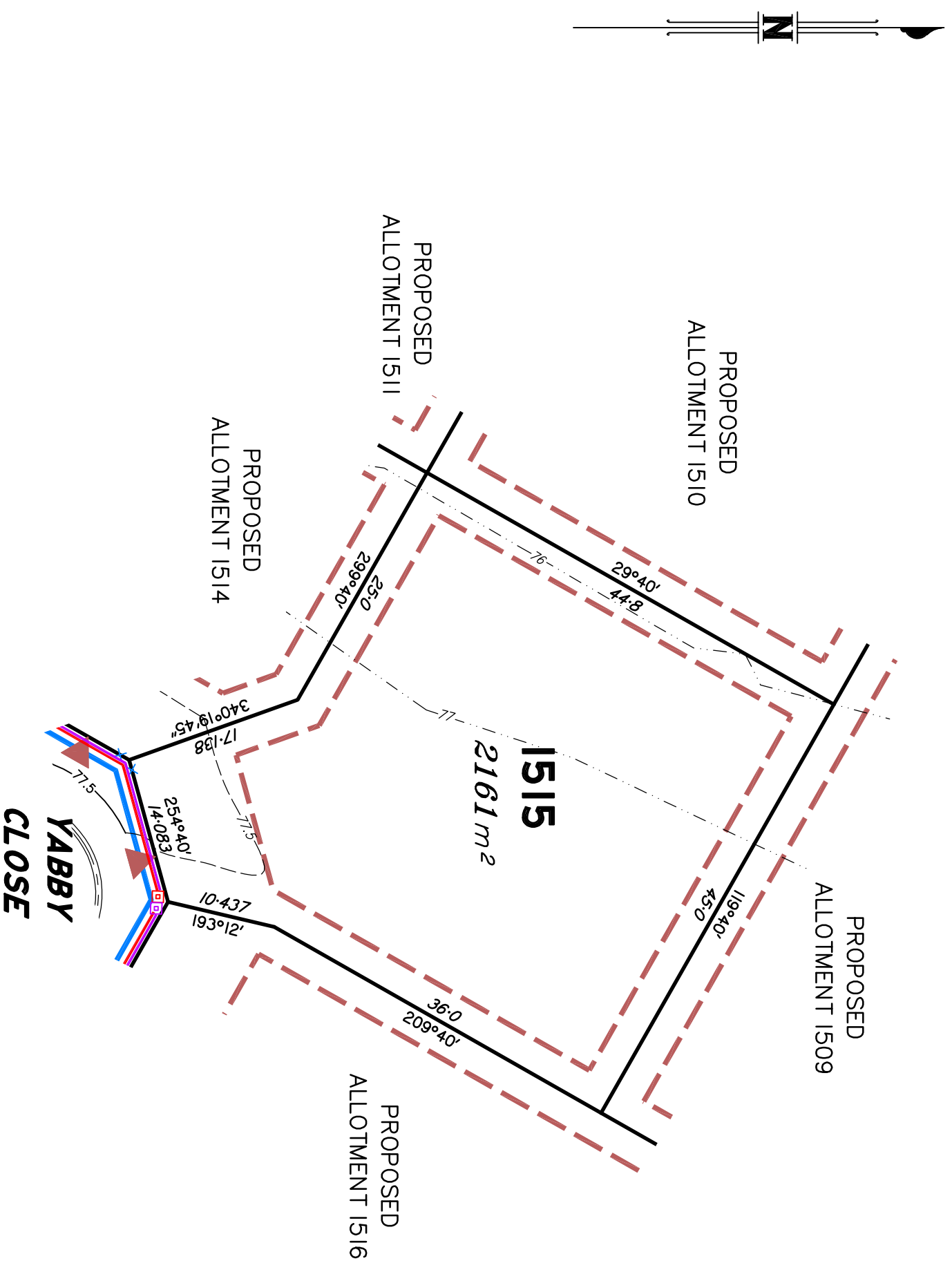
Gold Coast ♦ Brisbane
 Consultants in Surveying,
 Mapping & Development



A.B.N. 36 909 833 411
 PO Box 41, Helensvale QLD 4212
 Suite 206,
 Helensvale Professional Centre
 3 St John Overall Dr., Helensvale QLD 4212.
 P.h.: (07) 5573 6744
 F.a.x: (07) 5573 6755
 M.o.b.: 0413 945 959
 E.M.A.I.L.: mail@schlecker.com.au

SCALE ● A3 **1:500** DWG. NO. **15159-52B-1514**

Preliminary
SITE PLAN
 FOR PROPOSED LOT 1515
SPRING MOUNTAIN
 STAGE 15C



This plan in **NOT** a Disclosure Plan as setout in the Land Sales Act 1984 and is for General Information Only.

LEGEND

- Final surface Contours based on A.H.D datum at an interval of 0.5m, shown as: 24.0
- Surveyed Contours in undisturbed areas at an interval of 0.5m shown: 24
- Natural surface Contours (Lider) in undisturbed areas at an interval of 1.0m shown: 24
- Q100 Flood Line
- Easement
- Earthworks Batter
- Kerb/Kerb & Channel
- Drainage Line
- Drainage Pit
- Drainage Gully Pit
- Drainage MH
- Drainage Pit & Soakage Trench
- Water Line
- Water Conduit
- Water Service Point of Entry
- Water Stop Valve
- Fire Hydrant
- Underground Comms
- Comms Pit
- Underground Electricity
- Elec Box/Pit
- Street Light
- Indicative Driveway location
- Building Envelope
- in accordance with Approved Building Envelope Plan 7081 P06 BE A
- by Saunders Havill Group see RL/44/2008/H

IMPORTANT NOTES:

This plan has been prepared for PEET Pty Ltd for the purposes of Discussion only.
 All areas and dimensions are subject to final survey and relevant authority approval.
 Location of sewer, roofwater, stormwater, water reticulation, electricity and communication lines, manholes and pits, streetscaping, banks, batters, retaining walls, fencing, footpaths & building envelopes are as shown on engineering design drawings, supplied by KN Group Pty Ltd Consulting Engineers and may differ from the as constructed location. Levels and Contours shown are not to be used for building design or construction. A site survey is required.
 For final building requirements the relevant approved Plan of Development prevail over this site plan.
 These notes form an integral part of this plan and no part of this plan may be reproduced in whole or in part without these notes.

AMENDMENTS

A	DESCRIPTION	DATE
1	Emts added to Lots 1504 & 1505, Elect & NBN added	19.4.2022
2	Emts added to Lots 1502 & 1503, Busline Trill added	16.2.2022

SCHLECKER SURVEYING (QLD)

Gold Coast ♦ Brisbane
 Consultants in Surveying,
 Mapping & Development



A.B.N. 36 909 833 411
 PO Box 41, Helensvale QLD 4212
 Site 206,
 Helensvale Professional Centre
 Helensvale QLD 4212.
 3/51 John Overall Dr., Helensvale QLD 4212.
 Pn: (07) 5573 6744
 Fax: (07) 5573 6755
 Mod: 0473 945 959
 EMAIL: mail@schlecker.com.au

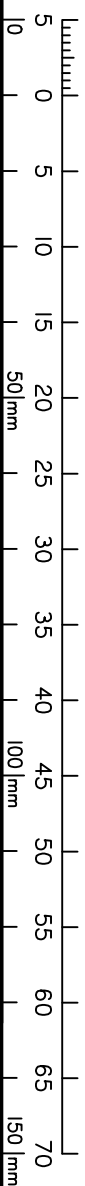
SCALE ● A3 **1:500** DWG. NO. **15159-52B-1515**

Preliminary

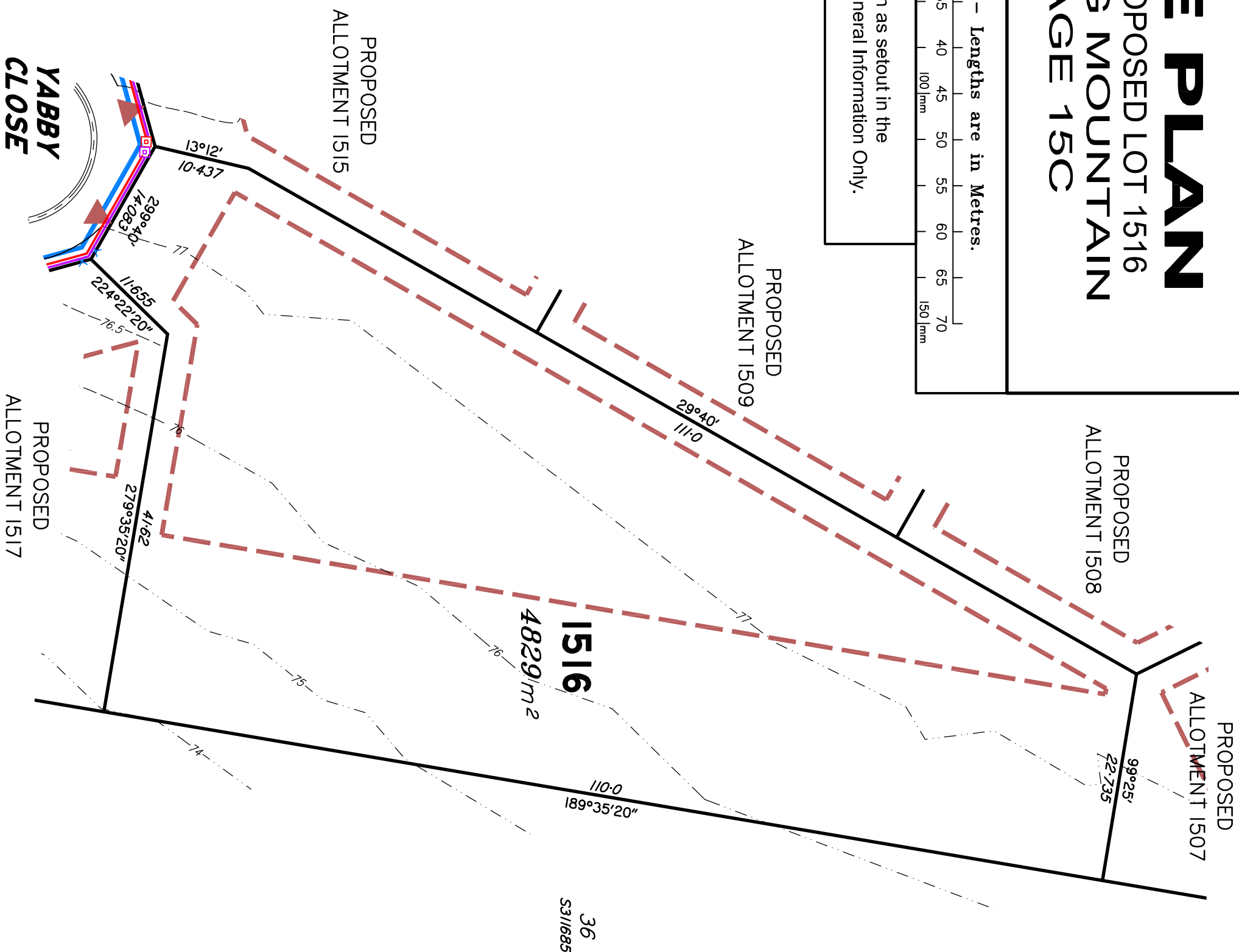
SITE PLAN

FOR PROPOSED LOT 1516 SPRING MOUNTAIN STAGE 15C

Scale 1:500 @ A3 paper size – Lengths are in Metres.



This plan is **NOT** a Disclosure Plan as setout in the Land Sales Act 1984 and is for General Information Only.



LEGEND

- Final surface Contours based on A.H.D datum at an interval of 0.5m; shown as: 24.0
- Surveyed Contours in undisturbed areas at an interval of 0.5m shown: 24
- Natural surface Contours (Lider) in undisturbed areas at an interval of 1.0m shown: 24
- Q100 Flood Line
- Easement
- Earthworks Batter
- Kerb/Kerb & Channel
- Drainage Line
- Drainage Pit
- Drainage Gully Pit
- Drainage MH
- Drainage Pit & Soakage Trench
- Water Line
- Water Conduit
- Water Service Point of Entry
- Water Stop Valve
- Fire Hydrant
- Underground Comms
- Comms Pit
- Underground Electricity
- Elec Box/Pit
- Street Light
- Indicative Driveway location
- Building Envelope in accordance with Approved Building Envelope Plan 7081 P06 BE A
- by Saunders Havill Group see RL/44/2008/H

IMPORTANT NOTES:

This plan has been prepared for PEET Pty Ltd for the purposes of Discussion only.
All areas and dimensions are subject to final survey and relevant authority approval.
Location of sewer, roofwater, stormwater, water reticulation, electricity and communication lines, manholes and pits, streetscaping, banks, batters, retaining walls, fencing, footpaths & building envelopes are as shown on engineering design drawings, supplied by KN Group Pty Ltd Consulting Engineers and may differ from the as constructed location. Levels and Contours shown are not to be used for building design or construction. A site survey is required.
For final building requirements the relevant approved Plan of Development prevail over this site plan.
These notes form an integral part of this plan and no part of this plan may be reproduced in whole or in part without these notes.

AMENDMENTS

A	DESCRIPTION	DATE
1	Emts added to Lots 1504 & 1505, Elect & NBN added	19.4.2022
2	Emts added to Lots 1502 & 1503, Busline Trill added	06.9.2022

SCHLECKER SURVEYING (QLD)

Gold Coast ♦ Brisbane
Consultants in Surveying,
Mapping & Development

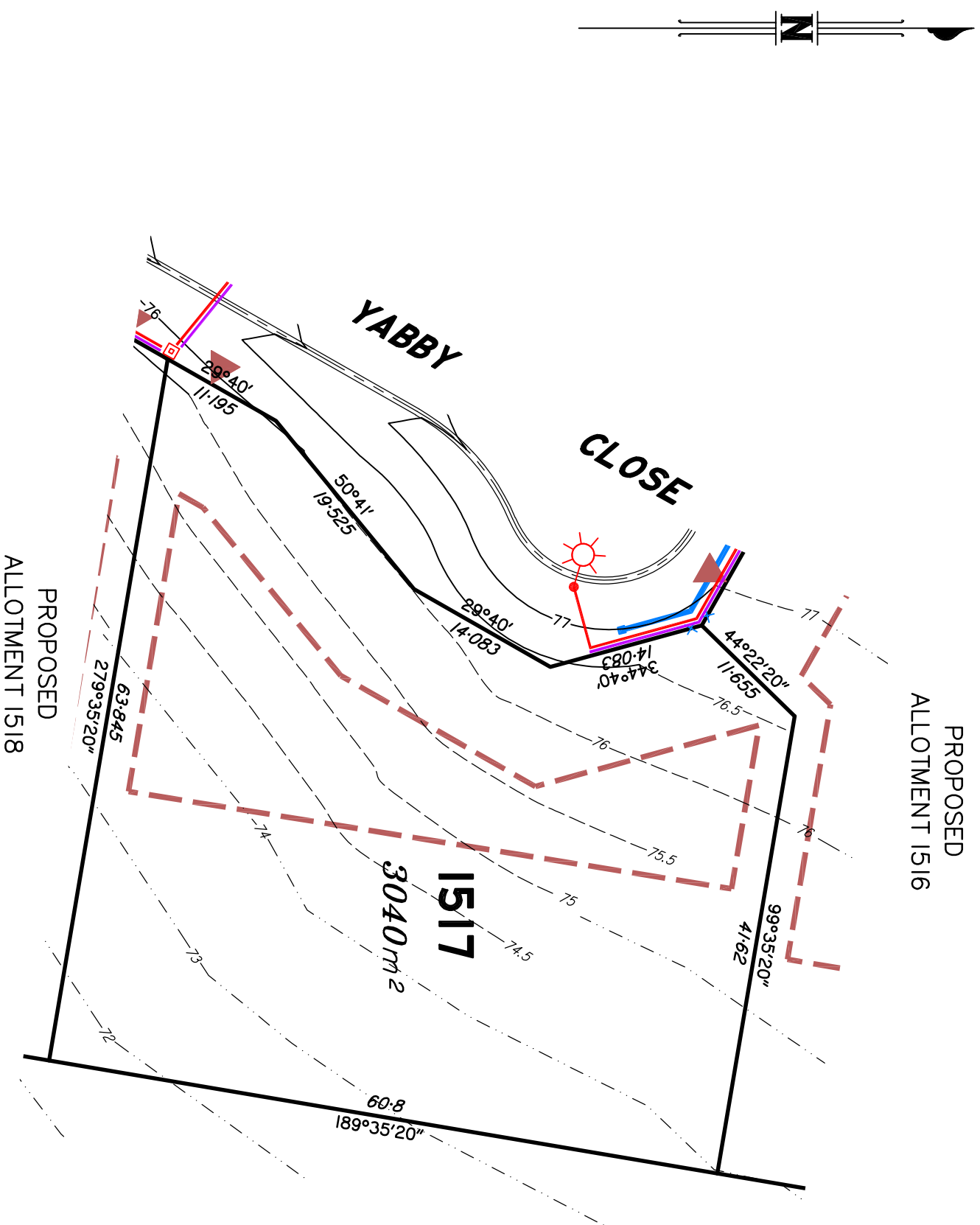
AB.N. 36 909 833 411
PO Box 41, Helensvale QLD 4212
Site 206,
Helensvale Professional Centre
3 St. John Overall Dr., Helensvale QLD 4212.



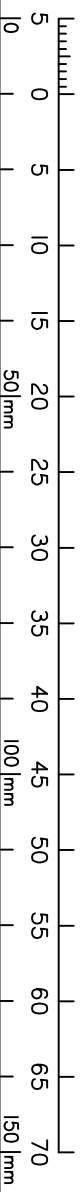
Ph: (07) 5573 6744
Fax: (07) 5573 6755
Mod: 0413 945 959
EMAIL: mail@schlecker.com.au

SCALE @ A3 1:500 DWG. NO. 15159-52B-1516

Preliminary
SITE PLAN
 FOR PROPOSED LOT 1517
SPRING MOUNTAIN STAGE 15C



Scale 1:500 @ A3 paper size – Lengths are in Metres.



This plan in **NOT** a Disclosure Plan as setout in the Land Sales Act 1984 and is for General Information Only.

LEGEND

- Final surface Contours based on A.H.D datum at an interval of 0.5m, shown as: 24.0
- Surveyed Contours in undisturbed areas at an interval of 0.5m shown: 24
- Natural surface Contours (Lider) in undisturbed areas at an interval of 1.0m shown: 24
- Q100 Flood Line
- Easement
- Earthworks Batter
- Kerb/Kerb & Channel
- Drainage Line
- Drainage Pit
- Drainage Gully Pit
- Drainage MH
- Drainage Pit & Soakage Trench
- Water Line
- Water Conduit
- Water Service Point of Entry
- Water Stop Valve
- Fire Hydrant
- Underground Comms
- Comms Pit
- Underground Electricity
- Elec Box/Pit
- Street Light
- Indicative Driveway location
- Building Envelope
- in accordance with Approved Building Envelope Plan 7081 P06 BE A
- by Saunders Havill Group see RL/44/2008/H

IMPORTANT NOTES:

This plan has been prepared for PEET Pty Ltd for the purposes of Discussion only.
 All areas and dimensions are subject to final survey and relevant authority approval.
 Location of sewer, roofwater, stormwater, water reticulation, electricity and communication lines, manholes and pits, streetscaping, banks, batters, retaining walls, fencing, footpaths & building envelopes are as shown on engineering design drawings, supplied by KN Group Pty Ltd Consulting Engineers and may differ from the as constructed location. Levels and Contours shown are not to be used for building design or construction. A site survey is required.
 For final building requirements the relevant approved Plan of Development prevail over this site plan.
 These notes form an integral part of this plan and no part of this plan may be reproduced in whole or in part without these notes.

AMENDMENTS

A	DESCRIPTION	DATE
A	Emts added to Lots 1504 & 1505, Elect & NBN added	19.4.2022
B	Emts added to Lots 1502 & 1503, Busline Trill added	06.9.2022

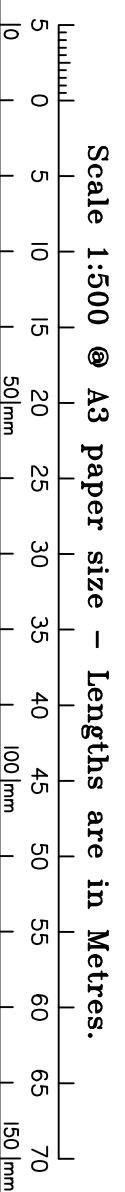
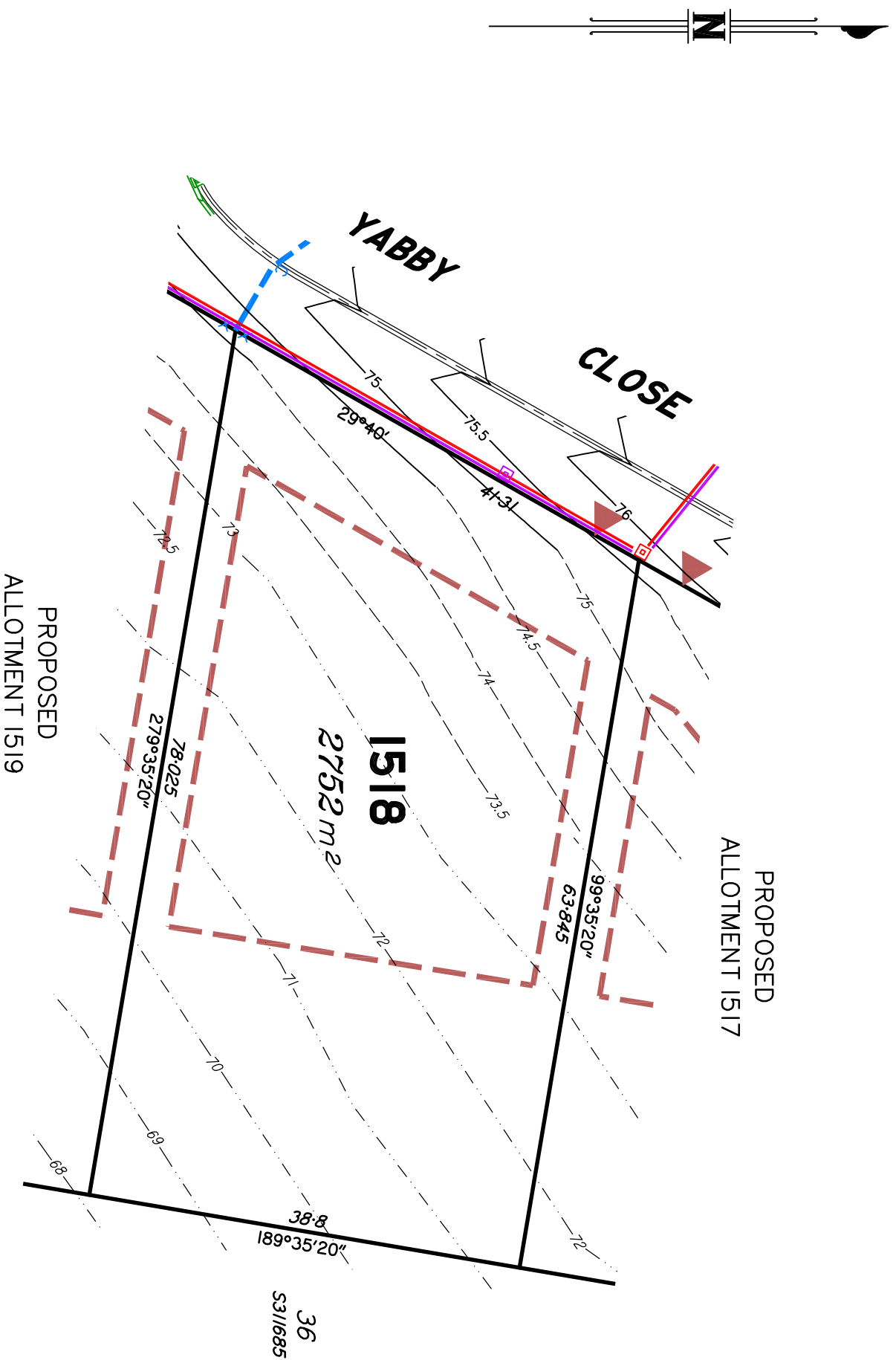
SCHLECKER SURVEYING (QLD)

Gold Coast ♦ Brisbane
 Consultants in Surveying,
 Mapping & Development



A.B.N. 36 909 833 411
 PO Box 41, Helensvale QLD 4212
 Site 206,
 Helensvale Professional Centre
 3 St John Overall Dr., Helensvale QLD 4212.
 Pn: (07) 5573 6744
 Fax: (07) 5573 6755
 Mod: 0413 945 959
 EMAIL: mail@schlecker.com.au

Preliminary
SITE PLAN
 FOR PROPOSED LOT 1518
SPRING MOUNTAIN
 STAGE 15C



This plan in **NOT** a Disclosure Plan as setout in the Land Sales Act 1984 and is for General Information Only.

LEGEND

- Final surface Contours based on A.H.D datum at an interval of 0.5m, shown as: 24.0
- Surveyed Contours in undisturbed areas at an interval of 0.5m shown: 24
- Natural surface Contours (Lider) in undisturbed areas at an interval of 1.0m shown: 24
- Q100 Flood Line
- Easement
- Earthworks Batter
- Kerb/Kerb & Channel
- Drainage Line
- Drainage Pit
- Drainage Gully Pit
- Drainage MH
- Drainage Pit & Soakage Trench
- Water Line
- Water Conduit
- Water Service Point of Entry
- Water Stop Valve
- Fire Hydrant
- Underground Comms
- Comms Pit
- Underground Electricity
- Elec Box/Pit
- Street Light
- Indicative Driveway location
- Building Envelope
- in accordance with Approved Building Envelope Plan 7081 P06 BE A
- by Saunders Havill Group see RL/44/2008/H

IMPORTANT NOTES:

This plan has been prepared for PEET Pty Ltd for the purposes of Discussion only.
 All areas and dimensions are subject to final survey and relevant authority approval.
 Location of sewer, roofwater, stormwater, water reticulation, electricity and communication lines, manholes and pits, streetscaping, banks, batters, retaining walls, fencing, footpaths & building envelopes are as shown on engineering design drawings, supplied by KN Group Pty Ltd Consulting Engineers and may differ from the as constructed location. Levels and Contours shown are not to be used for building design or construction. A site survey is required.
 For final building requirements the relevant approved Plan of Development prevail over this site plan.
 These notes form an integral part of this plan and no part of this plan may be reproduced in whole or in part without these notes.

AMENDMENTS

A	DESCRIPTION	DATE
1	Emts added to Lots 1504 & 1505, Elect & NBN added	19.4.2022
2	Emts added to Lots 1502 & 1503, Bushfire Trill added	06.9.2022

SCHLECKER SURVEYING (QLD)

Gold Coast ♦ Brisbane
 Consultants in Surveying,
 Mapping & Development



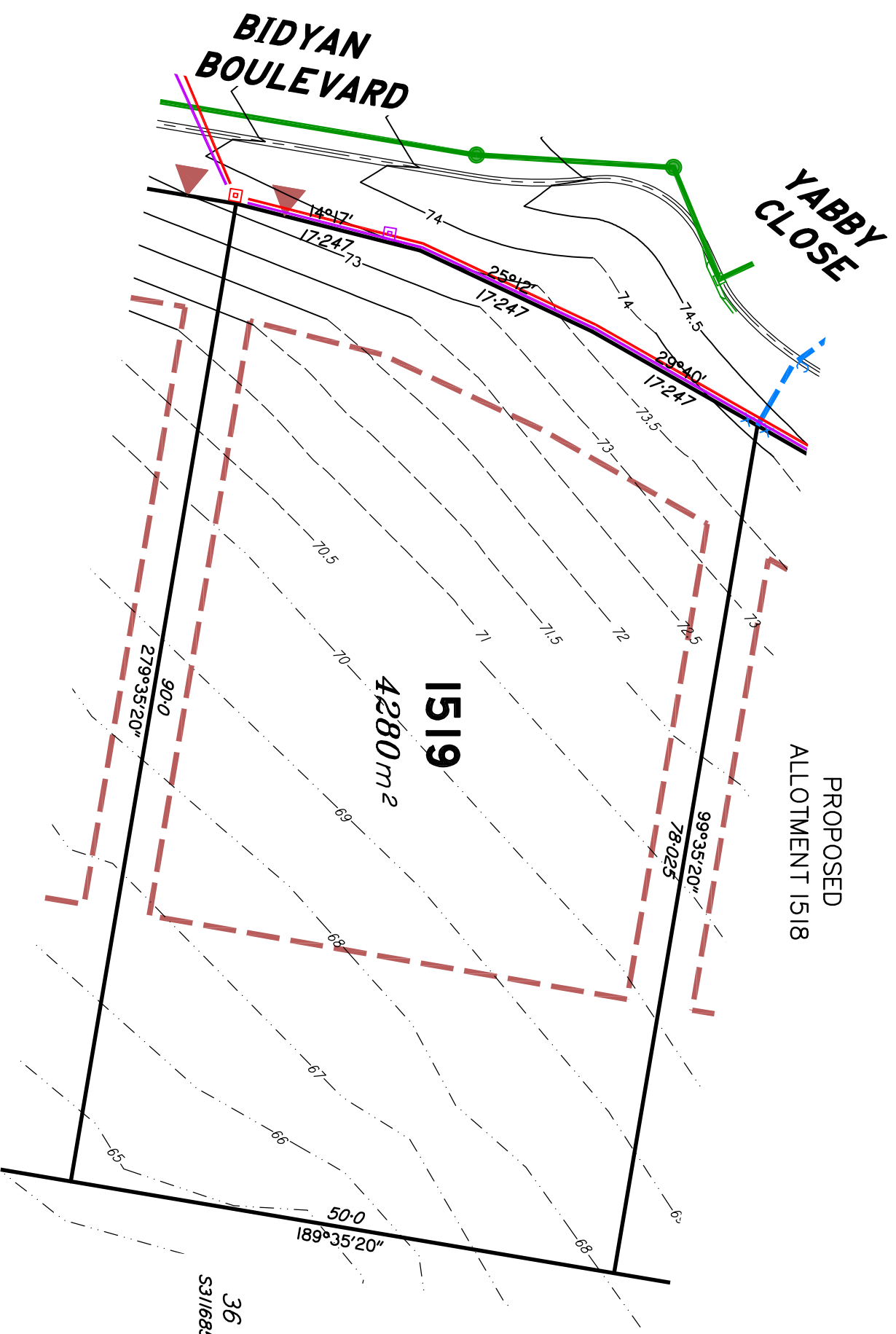
A.B.N. 36 909 833 411
 PO Box 41, Hebersvale QLD 4212
 Site 206,
 Hebersvale Professional Centre
 3 St John Overall Dr., Hebersvale QLD 4212.
 P.h.: (07) 5573 6744
 F.h.x: (07) 5573 6755
 M.ob.: 0413 945 959
 E.M.A.I.L.: mail@schlecker.com.au

SCALE @ A3 **1:500** DWG. NO. **15159-52B-1518**

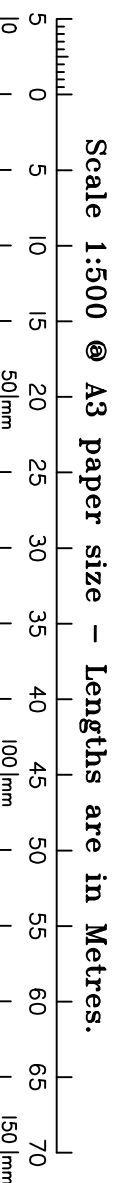
Preliminary

SITE PLAN

FOR PROPOSED LOT 1519
SPRING MOUNTAIN STAGE 15C



PROPOSED
ALLOTMENT 1520



This plan in **NOT** a Disclosure Plan as setout in the Land Sales Act 1984 and is for General Information Only.

LEGEND

- Final surface Contours based on A.H.D datum at an interval of 0.5m, shown as: — 24.0 —
- Surveyed Contours in undisturbed areas at an interval of 0.5m shown: - - - 24 - - -
- Natural surface Contours (Lider) in undisturbed areas at an interval of 1.0m shown: - - - 24 - - -
- Q100 Flood Line
- Easement
- Earthworks Batter
- Kerb/Kerb & Channel
- Drainage Line
- Drainage Pit
- Drainage Gully Pit
- Drainage MH
- Drainage Pit & Soakage Trench
- Water Line
- Water Conduit
- Water Service Point of Entry
- Water Stop Valve
- Fire Hydrant
- Underground Comms
- Comms Pit
- Underground Electricity
- Elec Box/Pit
- Street Light
- Indicative Driveway location
- Building Envelope
- in accordance with Approved Building Envelope Plan 7081 P06 BE A
- by Saunders Havill Group see RL/44/2008/H

IMPORTANT NOTES:

This plan has been prepared for PEET Pty Ltd for the purposes of Discussion only.
 All areas and dimensions are subject to final survey and relevant authority approval.
 Location of sewer, roofwater, stormwater, water reticulation, electricity and communication lines, manholes and pits, streetscaping, banks, batters, retaining walls, fencing, footpaths & building envelopes are as shown on engineering design drawings, supplied by KN Group Pty Ltd Consulting Engineers and may differ from the as constructed location. Levels and Contours shown are not to be used for building design or construction. A site survey is required.
 For final building requirements the relevant approved Plan of Development prevail over this site plan.
 These notes form an integral part of this plan and no part of this plan may be reproduced in whole or in part without these notes.

AMENDMENTS

A	DESCRIPTION	DATE
1	Emts added to Lots 1504 & 1505, Elect & NBN added	19.4.2022
2	Emts added to Lots 1502 & 1503, Bushfire Trill added	06.9.2022

SCHLECKER SURVEYING (QLD)

Gold Coast ♦ Brisbane
 Consultants in Surveying,
 Mapping & Development



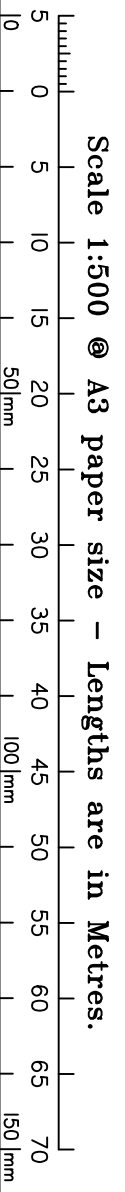
A.B.N. 36 909 833 411
 PO Box 41, Helensvale QLD 4212

Site 206,
 Helensvale Professional Centre
 3 St John Overall Dr., Helensvale QLD 4212.
 P.h.: (07) 5573 6744
 F.h.x: (07) 5573 6755
 M.ob.: 0413 945 959
 E.M.A.I.L.: mail@schlecker.com.au

SCALE @ A3 **1:500**

DWG. NO. **15159-52B-1519**

Preliminary
SITE PLAN
 FOR PROPOSED LOT 1520
SPRING MOUNTAIN
 STAGE 15C



This plan in **NOT** a Disclosure Plan as setout in the Land Sales Act 1984 and is for General Information Only.

LEGEND

- Final surface Contours based on A.H.D datum at an interval of 0.5m, shown as: 24.0
- Surveyed Contours in undisturbed areas at an interval of 0.5m shown: 24
- Natural surface Contours (Lider) in undisturbed areas at an interval of 1.0m shown: 24
- Q100 Flood Line
- Easement
- Earthworks Batter
- Kerb/Kerb & Channel
- Drainage Line
- Drainage Pit
- Drainage Gully Pit
- Drainage MH
- Drainage Pit & Soakage Trench
- Water Line
- Water Conduit
- Water Service Point of Entry
- Water Stop Valve
- Fire Hydrant
- Underground Comms
- Comms Pit
- Underground Electricity
- Elec Box/Pit
- Street Light
- Indicative Driveway location
- Building Envelope
- in accordance with Approved Building Envelope Plan 7081 P06 BE A
- by Saunders Havill Group see RL/44/2008/H

IMPORTANT NOTES:

This plan has been prepared for PEET Pty Ltd for the purposes of Discussion only.
 All areas and dimensions are subject to final survey and relevant authority approval.
 Location of sewer, roofwater, stormwater, water reticulation, electricity and communication lines, manholes and pits, streetscaping, banks, batters, retaining walls, fencing, footpaths & building envelopes are as shown on engineering design drawings, supplied by KN Group Pty Ltd Consulting Engineers and may differ from the as constructed location. Levels and Contours shown are not to be used for building design or construction. A site survey is required.
 For final building requirements the relevant approved Plan of Development prevail over this site plan.
 These notes form an integral part of this plan and no part of this plan may be reproduced in whole or in part without these notes.

AMENDMENTS

A	DESCRIPTION	DATE
1	Emts added to Lots 1504 & 1505, Elect & NBN added	19.4.2022
2	Emts added to Lots 1502 & 1503, Busline Trill added	06.9.2022

SCHLECKER SURVEYING (QLD)

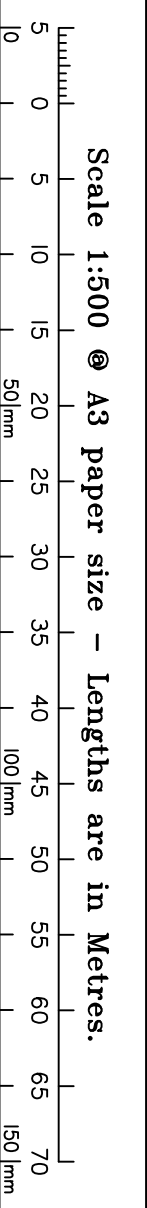
Gold Coast ♦ Brisbane
 Consultants in Surveying,
 Mapping & Development



A.B.N. 36 909 833 411
 PO Box 41, Helensvale QLD 4212
 Site 206,
 Helensvale Professional Centre
 3 St John Overall Dr., Helensvale QLD 4212.
 Pn: (07) 5573 6744
 Fax: (07) 5573 6755
 MOb: 0473 945 959
 EMAIL: mail@schlecker.com.au

SCALE @ A3 **1:500** DWG. NO. **15159-52B-1520**

Preliminary
SITE PLAN
 FOR PROPOSED LOT 1521
SPRING MOUNTAIN **STAGE 15C**



This plan in **NOT** a Disclosure Plan as setout in the Land Sales Act 1984 and is for General Information Only.

LEGEND

- Final surface Contours based on A.H.D datum at an interval of 0.5m, shown as: 24.0
- Surveyed Contours in undisturbed areas at an interval of 0.5m shown: 24
- Natural surface Contours (Lidar) in undisturbed areas at an interval of 1.0m shown: 24
- Q100 Flood Line
- Easement
- Earthworks Batter
- Kerb/Kerb & Channel
- Drainage Line
- Drainage Pit
- Drainage Gully Pit
- Drainage MH
- Drainage Pit & Soakage Trench
- Water Line
- Water Conduit
- Water Service Point of Entry
- Water Stop Valve
- Fire Hydrant
- Underground Comms
- Comms Pit
- Underground Electricity
- Elec Box/Pit
- Street Light
- Indicative Driveway location
- Building Envelope
- in accordance with Approved Building Envelope Plan 7081 P06 BE A
- by Saunders Havill Group see RL/44/2008/H

IMPORTANT NOTES:

This plan has been prepared for PEET Pty Ltd for the purposes of Discussion only.
 All areas and dimensions are subject to final survey and relevant authority approval.
 Location of sewer, roofwater, stormwater, water reticulation, electricity and communication lines, manholes and pits, streetscaping, banks, batters, retaining walls, fencing, footpaths & building envelopes are as shown on engineering design drawings, supplied by KN Group Pty Ltd Consulting Engineers and may differ from the as constructed location. Levels and Contours shown are not to be used for building design or construction. A site survey is required.
 For final building requirements the relevant approved Plan of Development prevail over this site plan.
 These notes form an integral part of this plan and no part of this plan may be reproduced in whole or in part without these notes.

AMENDMENTS

NO.	DESCRIPTION	DATE
A	Emts added to Lots 1504 & 1505, Elect & NBN added	19.4.2022
B	Emts added to Lots 1502 & 1503, Bushfire Trill added	06.9.2022

SCHLECKER SURVEYING (QLD)

Gold Coast ♦ Brisbane
 Consultants in Surveying,
 Mapping & Development



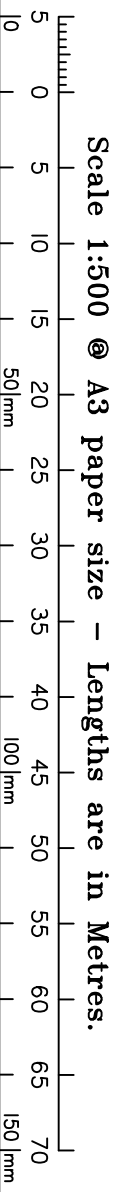
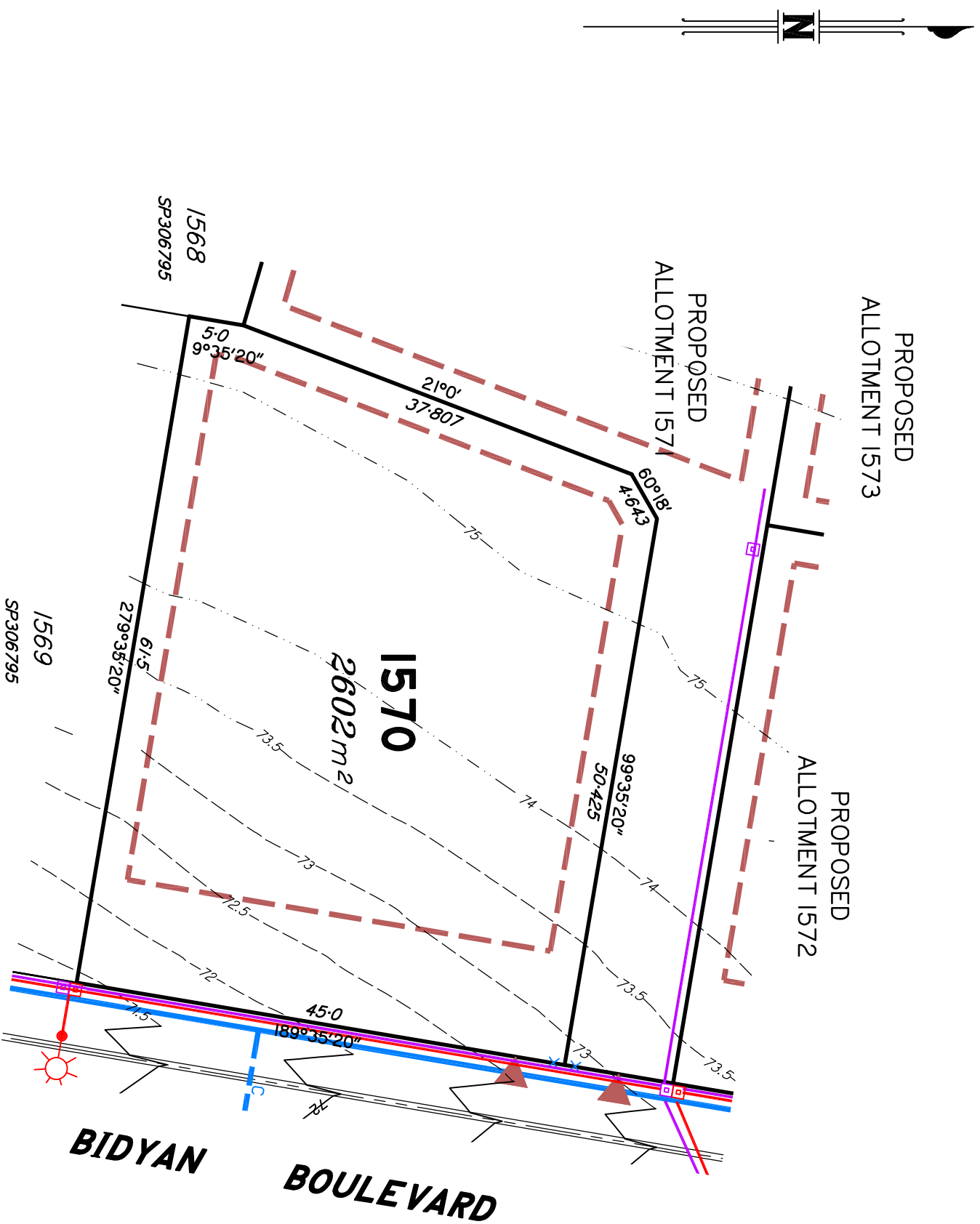
ABN: 36 909 833 411
 PO Box 41, Helensvale QLD 4212
 Site 206,
 Helensvale Professional Centre
 Helensvale QLD 4212.
 3 St John Overall Dr, Helensvale QLD 4212.
 Pn: (07) 5573 6744
 Fax: (07) 5573 6755
 Mod: 0413 945 959
 Email: mail@schlecker.com.au

SCALE @ A3 **1:500** DWG. NO. **15159-52B-1521**

Preliminary

SITE PLAN

FOR PROPOSED LOT 1570
SPRING MOUNTAIN
 STAGE 15C



This plan in **NOT** a Disclosure Plan as setout in the Land Sales Act 1984 and is for General Information Only.

LEGEND

- Final surface Contours based on A.H.D datum at an interval of 0.5m, shown as: 24.0
- Surveyed Contours in undisturbed areas at an interval of 0.5m shown: 24
- Natural surface Contours (Lidar) in undisturbed areas at an interval of 1.0m shown: 24
- Q100 Flood Line
- Easement
- Earthworks Batter
- Kerb/Kerb & Channel
- Drainage Line
- Drainage Pit
- Drainage Gully/Pit
- Drainage MH
- Drainage Pit & Soakage Trench
- Water Line
- Water Conduit
- Water Service Point of Entry
- Water Stop Valve
- Fire Hydrant
- Underground Comms
- Comms Pit
- Underground Electricity
- Elec Box/Pit
- Street Light
- Indicative Driveway location
- Building Envelope
- In accordance with Approved Building Envelope Plan 7081 P06 BE A by Saunders Havill Group see RL/44/2008/H

IMPORTANT NOTES:

This plan has been prepared for PEET Pty Ltd for the purposes of Discussion only.
 All areas and dimensions are subject to final survey and relevant authority approval.
 Location of sewer, roofwater, stormwater, water reticulation, electricity and communication lines, manholes and pits, streetscaping, banks, batters, retaining walls, fencing, footpaths & building envelopes are as shown on engineering design drawings, supplied by KN Group Pty Ltd Consulting Engineers and may differ from the as constructed location. Levels and Contours shown are not to be used for building design or construction. A site survey is required.
 For final building requirements the relevant approved Plan of Development prevail over this site plan.
 These notes form an integral part of this plan and no part of this plan may be reproduced in whole or in part without these notes.

AMENDMENTS

NO.	DESCRIPTION	DATE
A	EMTs added to Lots 1504 & 1505. Elec & NENY added.	19.4.2022
B	EMTs added to Lots 1502 & 1503. Bushtree Trill added.	06.9.2022

SCHLECKER SURVEYING (QLD)

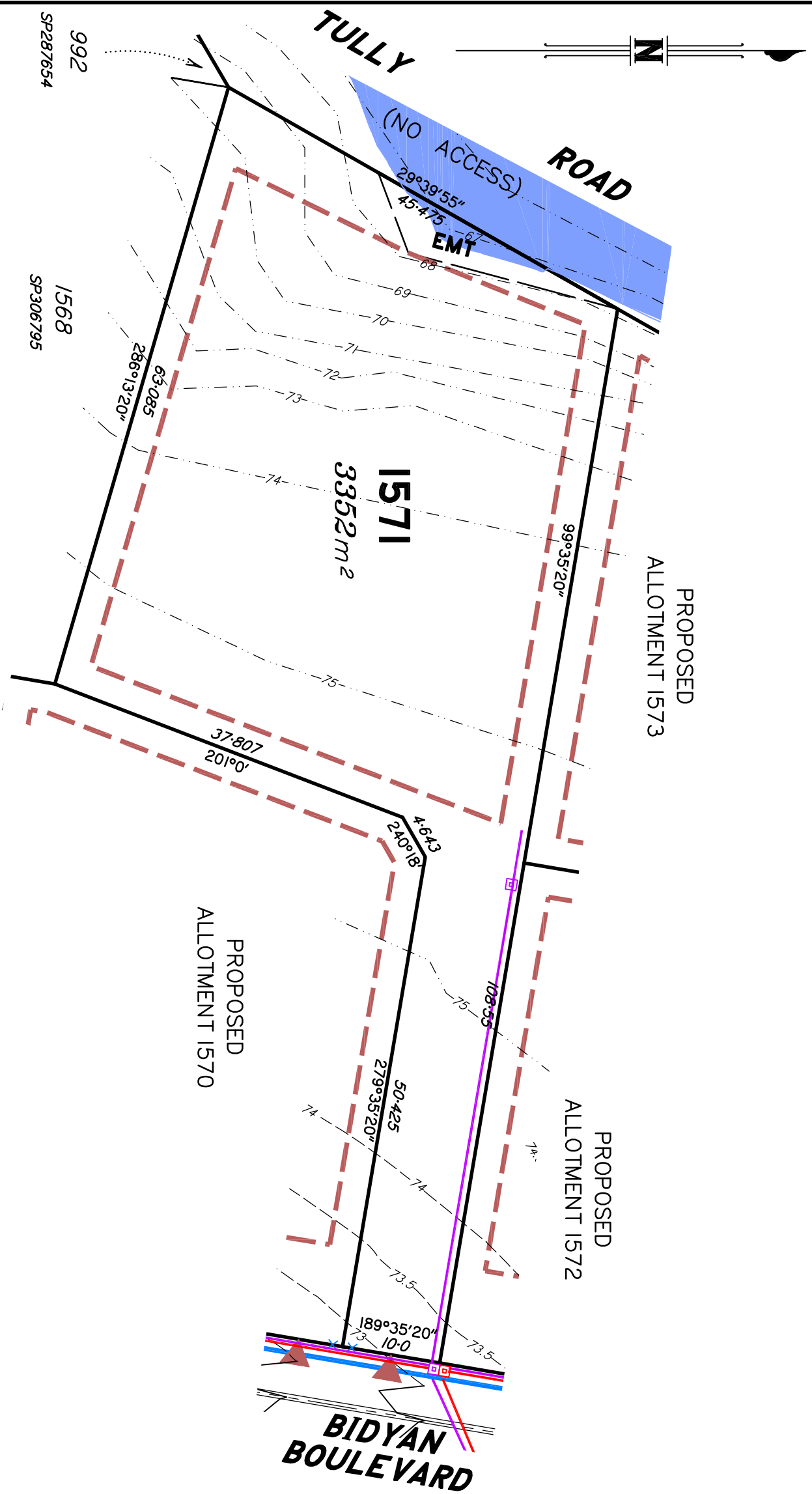
Gold Coast ♦ Brisbane
 Consultants in Surveying,
 Mapping & Development



A.B.N. 36 909 833 411
 PO Box 41, Helensvale QLD 4212
 Site 206,
 Helensvale Professional Centre
 3 St John Overall Dr., Helensvale QLD 4212.
 Pn: (07) 5573 6744
 Fax: (07) 5573 6755
 Mod: 0413 945 959
 EMAIL: mail@schlecker.com.au

SCALE @ A3 **1:500** DWG. NO. **15159-52B-1570**

Preliminary
SITE PLAN
 FOR PROPOSED LOT 1571
SPRING MOUNTAIN **STAGE 15C**



LEGEND

- Final surface Contours based on A.H.D datum at an interval of 0.5m, shown as: ———— 24.0 ————
- Surveyed Contours in undisturbed areas at an interval of 0.5m shown: - - - - - 24 - - - - -
- Natural surface Contours (Lidar) in undisturbed areas at an interval of 1.0m shown: 24
- Q100 Flood Line
 - Easement
 - Earthworks Batter
 - Kerb/Kerb & Channel
 - Drainage Line
 - Drainage Pit
 - Drainage Gully/Pit
 - Drainage MH
 - Drainage Pit & Soakage Trench
 - Water Line
 - Water Conduit
 - Water Service Point of Entry
 - Water Stop Valve
 - Fire Hydrant
 - Underground Comms
 - Comms Pit
 - Underground Electricity
 - Elec Box/Pit
 - Street Light
 - Indicative Driveway location
 - Building Envelope
 - In accordance with Approved Building Envelope Plan 7081 P06 BE A
 - by Saunders Havill Group see RL/44/2008/H

IMPORTANT NOTES:

This plan has been prepared for PEET Pty Ltd for the purposes of Discussion only.
 All areas and dimensions are subject to final survey and relevant authority approval.
 Location of sewer, roofwater, stormwater, water reticulation, electricity and communication lines, manholes and pits, streetscaping, banks, batters, retaining walls, fencing, footpaths & building envelopes are as shown on engineering design drawings, supplied by KN Group Pty Ltd Consulting Engineers and may differ from the as constructed location. Levels and Contours shown are not to be used for building design or construction. A site survey is required.
 For final building requirements the relevant approved Plan of Development prevail over this site plan.
 These notes form an integral part of this plan and no part of this plan may be reproduced in whole or in part without these notes.

AMENDMENTS

NO.	DESCRIPTION	DATE
A	Emts added to Lots 1504 & 1505, Elect & NBN added.	19.4.2022
B	Emts added to Lots 1502 & 1503, Bushtire Trill added.	06.9.2022

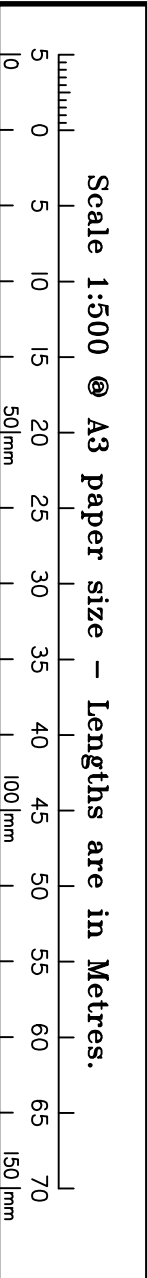
SCHLECKER SURVEYING (QLD)

Gold Coast ♦ Brisbane
 Consultants in Surveying,
 Mapping & Development



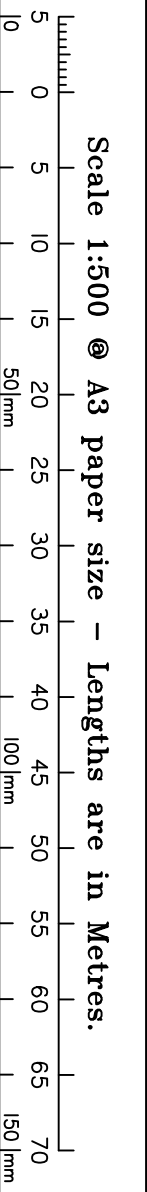
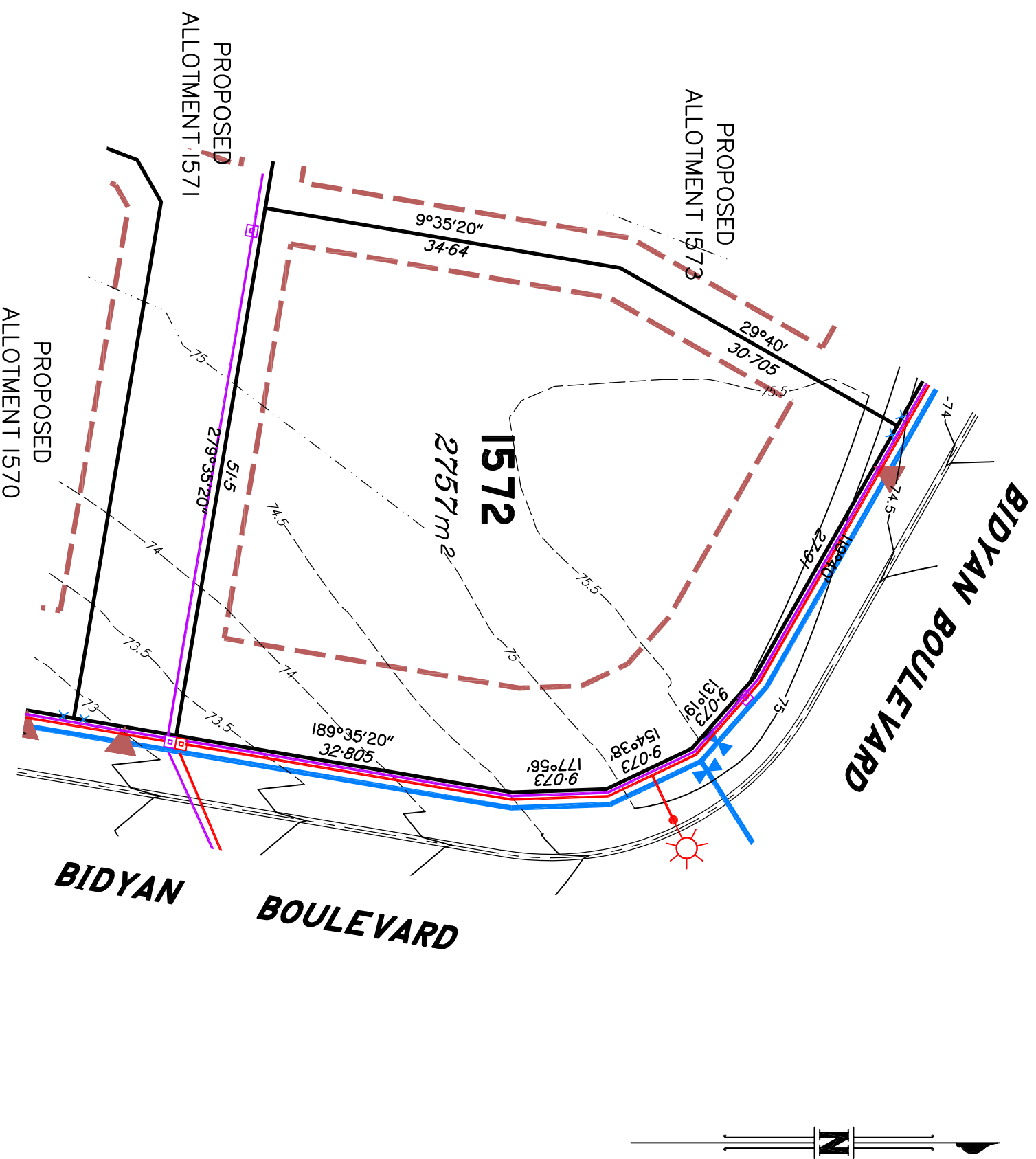
A.B.N. 36 909 833 411
 PO Box 41, Helensvale QLD 4212.
 Site 206,
 Helensvale Professional Centre
 3 St John Overall Dr., Helensvale QLD 4212.
 P.h.: (07) 5573 6744
 F.h.x: (07) 5573 6755
 M.ob.: 0413 945 959
 E.M.A.I.L.: mail@schlecker.com.au

SCALE ● A3 **1:500** DWG. NO. **15159-52B-1571**



This plan in **NOT** a Disclosure Plan as setout in the Land Sales Act 1984 and is for General Information Only.

Preliminary
SITE PLAN
 FOR PROPOSED LOT 1572
SPRING MOUNTAIN
 STAGE 15C



This plan in NOT a Disclosure Plan as setout in the Land Sales Act 1984 and is for General Information Only.

LEGEND

- Final surface Contours based on A.H.D datum at an interval of 0.5m, shown as: 24.0 24.0
- Surveyed Contours in undisturbed areas at an interval of 0.5m shown: 24 24
- Natural surface Contours (Lidar) in undisturbed areas at an interval of 1.0m shown: 24
- Q100 Flood Line
- Easement
- Earthworks Batter
- Kerb/Kerb & Channel
- Drainage Line
- Drainage Pit
- Drainage Gully/Pit
- Drainage MH
- Drainage Pit & Soakage Trench
- Water Line
- Water Conduit
- Water Service Point of Entry
- Water Stop Valve
- Fire Hydrant
- Underground Comms
- Comms Pit
- Underground Electricity
- Elec Box/Pit
- Street Light
- Indicative Driveway location
- Building Envelope
- In accordance with Approved Building Envelope Plan 7081 P06 BE A by Saunders Havill Group see RL/44/2008/H

IMPORTANT NOTES:

This plan has been prepared for PEET Pty Ltd for the purposes of Discussion only.
 All areas and dimensions are subject to final survey and relevant authority approval.
 Location of sewer, rootwater, stormwater, water reticulation, electricity and communication lines, manholes and pits, streetscaping, banks, batters, retaining walls, fencing, footpaths & building envelopes are as shown on engineering design drawings, supplied by KN Group Pty Ltd Consulting Engineers and may differ from the as constructed location. Levels and Contours shown are not to be used for building design or construction. A site survey is required.
 For final building requirements the relevant approved Plan of Development prevail over this site plan.
 These notes form an integral part of this plan and no part of this plan may be reproduced in whole or in part without these notes.

AMENDMENTS

A	DESCRIPTION	DATE
1	Emts added to Lots 1504 & 1505, Elect & NBN added.	19.4.2022
2	Emts added to Lots 1502 & 1503, Bushtire Trill added.	06.9.2022

SCHLECKER SURVEYING (QLD)

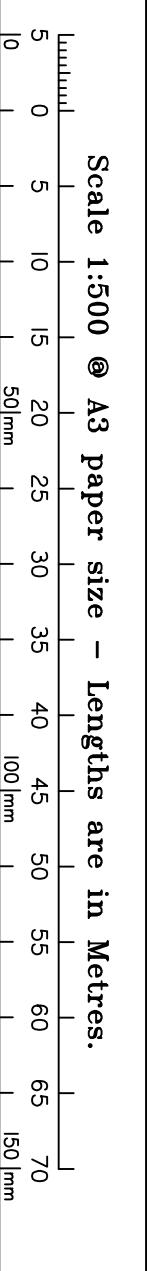
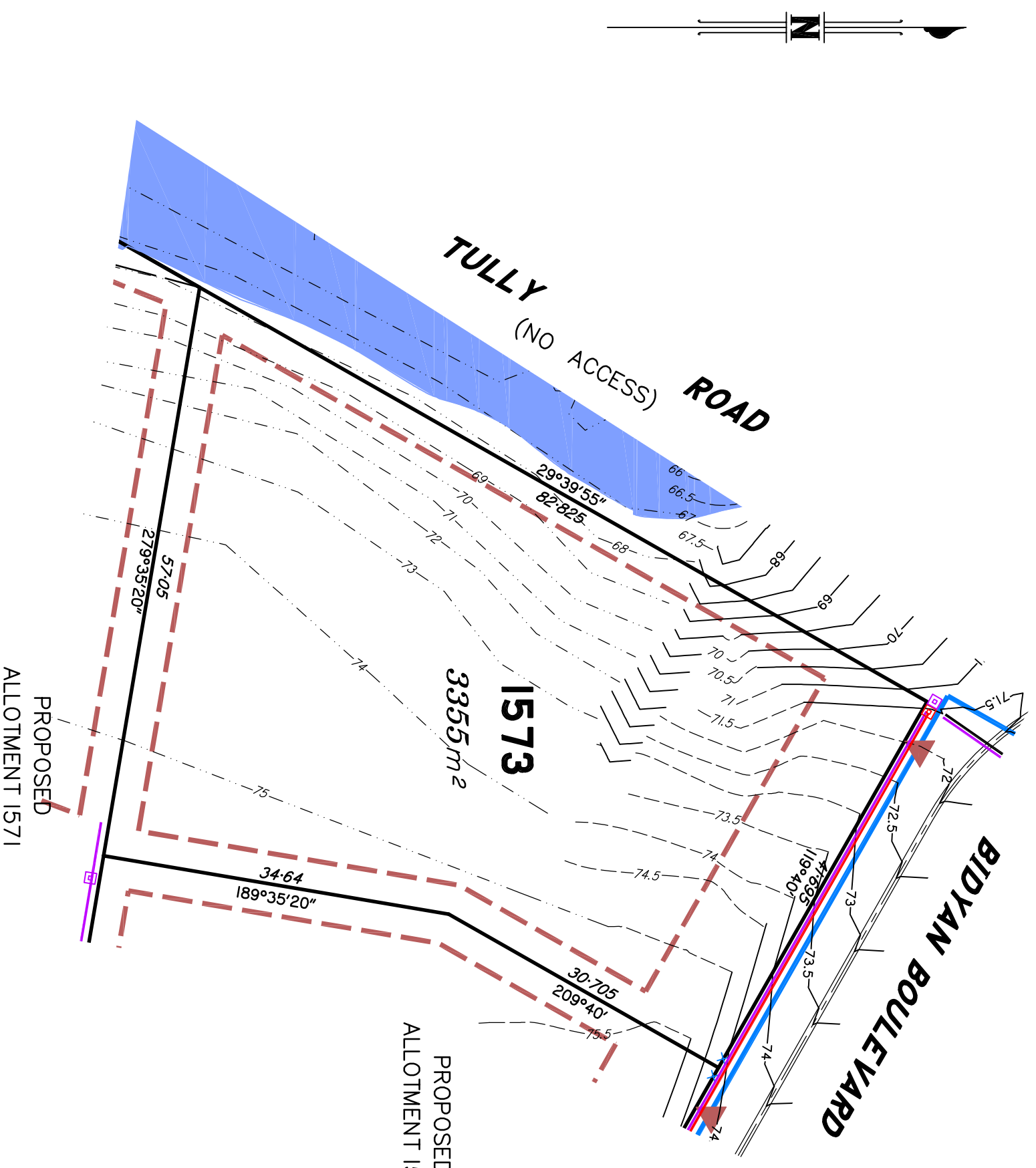
Gold Coast ♦ Brisbane
 Consultants in Surveying,
 Mapping & Development



A.B.N. 36 909 833 411
 PO Box 41, Helensvale QLD 4212.
 Site 206,
 Helensvale Professional Centre
 3/51 John Overall Dr., Helensvale QLD 4212.
 P/n: (07) 5573 6744
 F/n: (07) 5573 6755
 M/n: 0413 945 959
 EMAIL: mail@schlecker.com.au

SCALE @ A3 **1:500** DWG. NO. **15159-52B-1572**

Preliminary
SITE PLAN
 FOR PROPOSED LOT 1573
SPRING MOUNTAIN
 STAGE 15C



This plan in **NOT** a Disclosure Plan as setout in the Land Sales Act 1984 and is for General Information Only.

LEGEND

- Final surface Contours based on A.H.D datum at an interval of 0.5m, shown as: ——— 24.0 ———
- Surveyed Contours in undisturbed areas at an interval of 0.5m shown: ——— 24 ———
- Natural surface Contours (Lidar) in undisturbed areas at an interval of 1.0m shown: - - - - - 24 - - - - -
- Q100 Flood Line
- Easement
- Earthworks Batter
- Kerb/Kerb & Channel
- Drainage Line
- Drainage Pit
- Drainage Gully/Pit
- Drainage MH
- Drainage Pit & Soakage Trench
- Water Line
- Water Conduit
- Water Service Point of Entry
- Water Stop Valve
- Fire Hydrant
- Underground Comms
- Comms Pit
- Underground Electricity
- Elec Box/Pit
- Street Light
- Indicative Driveway location
- Building Envelope
- In accordance with Approved Building Envelope Plan 7081 P06 BE A by Saunders Havill Group see RL/44/2008/H

IMPORTANT NOTES:

This plan has been prepared for PEET Pty Ltd for the purposes of Discussion only.
 All areas and dimensions are subject to final survey and relevant authority approval.
 Location of sewer, rootwater, stormwater, water reticulation, electricity and communication lines, manholes and pits, streetscaping, banks, batters, retaining walls, fencing, footpaths & building envelopes are as shown on engineering design drawings, supplied by KN Group Pty Ltd Consulting Engineers and may differ from the as constructed location. Levels and Contours shown are not to be used for building design or construction. A site survey is required.
 For final building requirements the relevant approved Plan of Development prevail over this site plan.
 These notes form an integral part of this plan and no part of this plan may be reproduced in whole or in part without these notes.

AMENDMENTS

A	DESCRIPTION	DATE
A	Emts added to Lots 1504 & 1505, Elect & NBN added	19.4.2022
B	Emts added to Lots 1502 & 1503, Busline Trill added	6.9.2022

SCHLECKER SURVEYING (QLD)

Gold Coast ♦ Brisbane
 Consultants in Surveying,
 Mapping & Development



ABN: 36 909 833 411
 PO Box 41, Helensvale QLD 4212
 Site 206,
 Helensvale Professional Centre
 3 St John Overall Dr., Helensvale QLD 4212.
 P/n: (07) 5573 6744
 F/n: (07) 5573 6755
 M/n: 0413 945 959
 EMAIL: mail@schlecker.com.au

SCALE @ A3 **1:500** DWG. NO. **15159-52B-1573**