

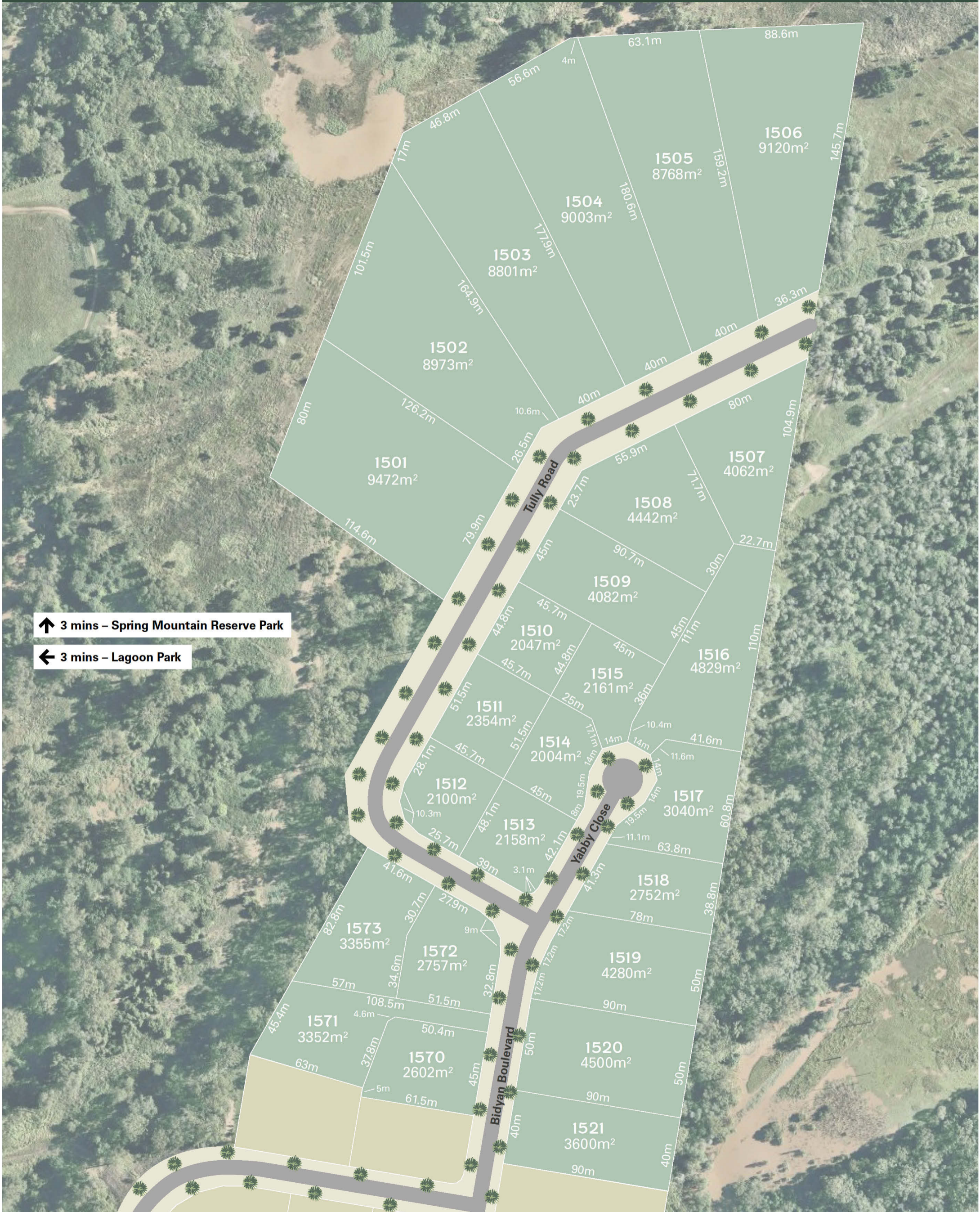


**SPRING MOUNTAIN**  
ACREAGE ESTATE

**ARCADIA RELEASE**

**PEET**

# ARCADIA RELEASE STAGE 15C



↑ 3 mins – Spring Mountain Reserve Park

← 3 mins – Lagoon Park

Disclaimer: The information shown on this plan has been prepared with care, however is subject to change and cannot form part of any other offer or contract, other than to identify the lot number and location of the allotment being purchased. Whilst every reasonable care has been taken in preparing this information, PEET does not warrant its accuracy. Interested parties must be sure to undertake their own independent enquiries and, where applicable, obtain appropriate professional advice relevant to their particular circumstances. All information is subject to change without notice. Lot information is subject to survey and Titles Office approval. For additional details, please refer to the Design Guidelines. Photographs are indicative only. The street names are subject to change. Map indicative only. October 2022.



## ESCAPE TO YOUR NATURAL HABITAT

The best of both worlds. That's what Spring Mountain Acreage Estate gives you the opportunity to enjoy, with this stunning countryside location boasting plenty of local urban convenience for the whole family. Hidden in the Greenbank countryside, Spring Mountain offers an idyllic, peaceful lifestyle that's a short drive to Flagstone and surprisingly close to Brisbane and Springfield Lakes.

Land in the new Arcadia Release offers a range of acreage and half-acreage lots ranging in size from 2004m<sup>2</sup> – 9000m<sup>2</sup>+. Choose your dream lot with views over the Spring Mountain Reserve Park, Oxley Creek or natural bushland.

It's not just nature you'll be connected to, either. Everything you need is right on your doorstep, from a choice of schools, shopping centres, healthcare facilities, essential services and so much more. Plus, established transport links put you within a 45-minute drive of Brisbane.

[springmountain.com.au](http://springmountain.com.au)



**PEET**