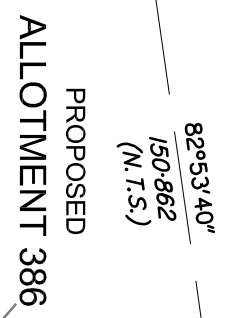
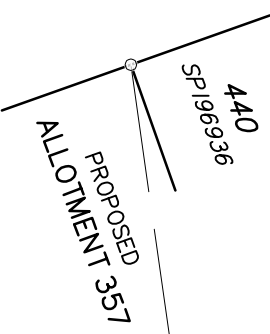


Mets and Bounds Description of Proposed Allotment 364

FROM THE SOUTH WESTERN MOST CORNER OF LOT 440 ON SP196936 IN A NORTH EASTERLY DIRECTION AT A BEARING OF 82 DEGREES 53' 40" FOR A DISTANCE OF 150.862 METRES TO THE POINT OF COMMENCEMENT THENCE

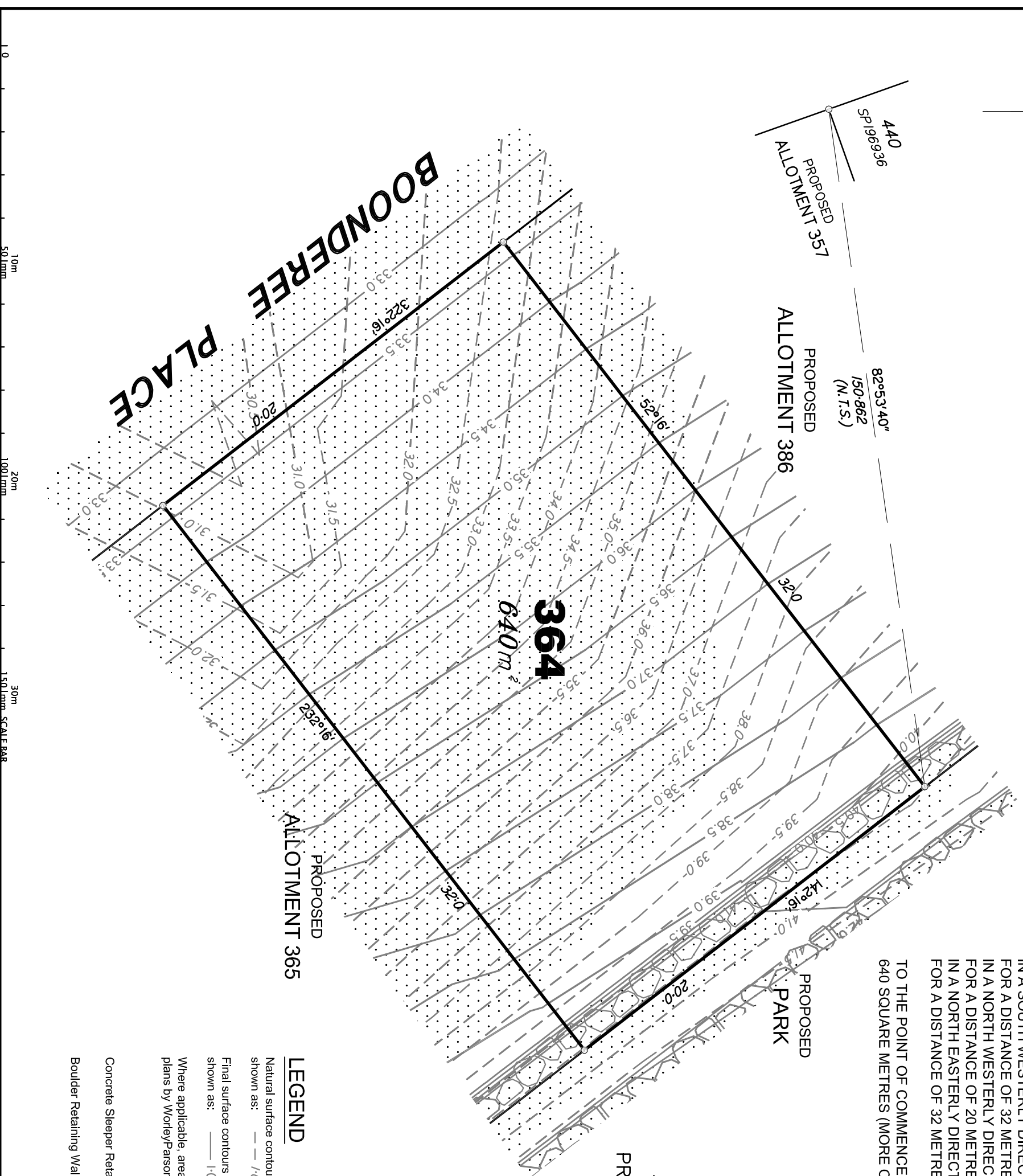
IN A SOUTH EASTERLY DIRECTION AT A BEARING OF 142 DEGREES 16'00" FOR A DISTANCE OF 20 METRES (MORE OR LESS), THENCE IN A SOUTH WESTERLY DIRECTION AT A BEARING OF 232 DEGREES 16'00" FOR A DISTANCE OF 32 METRES (MORE OR LESS), THENCE IN A NORTH WESTERLY DIRECTION AT A BEARING OF 322 DEGREES 16'00" FOR A DISTANCE OF 20 METRES (MORE OR LESS), THENCE IN A NORTH EASTERLY DIRECTION AT A BEARING OF 52 DEGREES 16'00" FOR A DISTANCE OF 32 METRES (MORE OR LESS),

TO THE POINT OF COMMENCEMENT AND CONTAINING AN AREA OF 640 SQUARE METRES (MORE OR LESS).



364
640m²

BOUNDEREE PLACE



THERE ARE EARTHWORKS PROPOSED FOR ALLOTMENT 364

LEGEND

Natural surface contours based on A.H.D. datum at an interval of 0.5m, shown as: 1:0 Final surface contours based on A.H.D. datum at an interval of 0.5m, shown as: 1:0

Where applicable, areas to be filled from natural surface are derived from plans by WorleyParsons, and shown as:-

Concrete Sleeper Retaining Walls shown as:-

Boulder Retaining Walls shown as:-

VANTAGE
STAGE 5
For
PEET

IMPORTANT NOTES:
(These notes are an integral part of this plan)
This plan has been prepared for PEET for the purposes of a Disclosure Plan Under the Land Sales Act 1984.
It is not to be used by any other person or corporation or for any other purpose and is subject to the following limitations:
The Allotment dimensions and area shown hereon are subject to final field survey and also to the requirements of Council and any other authority which may have requirements under any relevant legislation.
Please refer to the approved Development Application for conditions relating to the Allotments and to approved construction works drawings for services location and possible easements.
The locations of retaining walls shown on this plan are indicative only, see detailed engineering drawings for the dimensions of any structures that may affect the Lot.
Final surface contours shown hereon have been drawn from field survey and the locations of structures shown hereon have been drawn from survey by Hellstrom & Partners Pty Ltd.
Where final surface contours are not shown, no change to existing surface level is proposed.
The Material Change of Use and Reconfiguration of a Lot 2010/001 approved by Gladstone Regional Council on 15th May 2009, subject to conditions.

THESE DESIGNS AND DRAWINGS ARE COPYRIGHTED AND ARE NOT TO BE USED OR REPRODUCED WITHOUT THE WRITTEN PERMISSION OF THG SOUTHERN

Data Sources
Cadastral Boundaries 1:57800_7H.dwg
Design Contours X:301001-00396_C/CONTOURS.in, ROAD5, and ROAD5.20110315.dwg
Natural Surface Contours 1:57800_2.D.dwg
Engineering Design X:301001-00396_D/SSIGN.20110411.dwg

C	Reunumber Lot to conform with RPS "Small Lot Setback Plan" 21502-1.dpd dated 21-4-2011.	27/6/11	EM
B	Reunumber Lots to conform with Engineering drawings Rev0.	18/5/11	EM
A	Original	15/4/11	EM
No	Revisions	Date	Chkd

Parrish: AUCKLAND
County: CLINTON
Locality: NEW AUCKLAND
Local Authority: CLADSTONE REGIONAL MCA
Horizontal Meridian: MGA
Vertical Level Datum: AHD
Level Origin: PM95145
Scale: 1:200 @ A3
Surveyed: THG
Drawn: EJM
Checked: MMR
Plot Date: 28 Jun, 2011
Computer File Ref: C4868-Stage5-DP.dwg

DISCLOSURE PLAN
for Proposed Allotment
364
situated on
Lot 505 on SP233796

THG
BRISBANE GOLD COAST SAMFORD
07) 3666 4700 07) 5574 0588 07) 3299 1666
Email: mail@thg.com.au www.thg.com.au
A/N: 58 918 746 590 Helidon Farmes Pty Ltd trading as THG

Drawing No **C4868-DP 364** Issue **C**