

CERTIFICATION OF AS-CONSTRUCTED WORKS BY CIVIL CONTRACTOR

AS THE PRINCIPAL CONTRACTOR FOR THE ABOVE CIVIL WORKS, BMD URBAN DO CERTIFY THAT ALL CIVIL WORKS FOR THE DEVELOPMENT AT VANTAGE ESTATE STAGE 7 HAVE BEEN CONSTRUCTED UNDER THE SUPERVISION OF A BMD URBAN REPRESENTATIVE IN ACCORDANCE WITH THE RELEVANT AUTHORITY STANDARDS, THE APPROVED CIVIL ENGINEERING PLANS AND SPECIFICATION, AND ANY ASSOCIATED APPROVED PLAN AMENDMENTS. WE CONFIRM THAT THE AS CONSTRUCTED DATA AND TESTING CERTIFICATES PROVIDED TO WOOD & GRIEVE ENGINEERS REPRESENT A TRUE AND ACCURATE REFLECTION OF THE WORKS COMPLETED ON SITE.

SIGNATURE: _____
 NAME: _____
 DULY AUTHORISED ON BEHALF OF: BMD URBAN PTY LTD
 DATE: _____

CERTIFICATION OF AS-CONSTRUCTED WORKS BY SURVEYOR

MPA SURVEYING DO CERTIFY THAT THE AS CONSTRUCTED DATA AND PLANS PROVIDED TO BMD URBAN (AS THE PRINCIPAL CIVIL CONTRACTOR) FOR THE DEVELOPMENT AT VANTAGE ESTATE STAGE 7 IS A TRUE AND ACCURATE REFLECTION OF THE WORKS COMPLETED ON SITE. WE CONFIRM THAT ALL DATA AND PLANS HAVE BEEN PRESENTED USING THE CORRECT DATUM AND ORIENTATION APPROPRIATE TO THE SITE IN A FORMAT AS REQUIRED BY THE RELEVANT LOCAL AUTHORITY STANDARDS.

SIGNATURE: _____
 NAME: _____
 DULY AUTHORISED ON BEHALF OF: MPA SURVEYING
 DATE: _____

WORKS AS-CONSTRUCTED

BASED ON THE INFORMATION SUPPLIED BY THE PROJECT SURVEYOR MPA SURVEYING, THE QUALITY ASSURANCE DOCUMENTATION RECEIVED FROM THE PRINCIPAL CIVIL CONTRACTOR BMD URBAN, AND THE REGULAR SITE INSPECTIONS CARRIED OUT, WE VERIFY THAT THE INTENT OF THE APPROVED DESIGN DRAWINGS HAS BEEN ACHIEVED, AND THIS DRAWING IS AN ACCURATE REPRESENTATION OF THE COMPLETED WORKS.

PROJECT- VANTAGE STAGE 7
 PROJECT NUMBER- 23520
 SIGNATURE: _____ (RPEQ 13380) DATE: _____

A SAUNDERS
 ON BEHALF OF:
 WOOD & GRIEVE ENGINEERS LTD

IMPORTANT NOTE

- This plan was prepared as an As Constructed drawing for the Gladstone Regional Council and should not be used for any other purpose. This plan is strictly limited to that purpose and does not apply directly or indirectly and will not be used for any other application, use or matter. The plan is presented without the assumption of a duty of care to any other person (other than the Client) ("Third Party") and may not be relied on by Third Party.
- MPA Surveying will not be liable (in negligence or otherwise) for any direct or indirect loss, damage, liability or claim arising out of or incidental to:
 - a Third Party publishing, using or relying on the plan;
 - MPA Surveying relying on information provided to it by the Client or a Third Party where the information is incorrect, incomplete, inaccurate, out-of-date or unreasonable;
 - any inaccuracies or other faults with information or data sourced from a Third Party;
 - MPA Surveying relying on surface indicators that are incorrect or inaccurate;
 - the Client or any Third Party not verifying information in this plan where recommended by MPA Surveying;
 - the accuracy, reliability, suitability or completeness of any approximations or estimates made or referred to by MPA Surveying
- Without limiting paragraph 1 or 2 above, this plan may not be copied, distributed, or reproduced by any process unless this note is clearly displayed on the plan.
- As this plan is also presented in a digital format, no responsibility is accepted by MPA Surveying for any alterations, amendments to the plan.

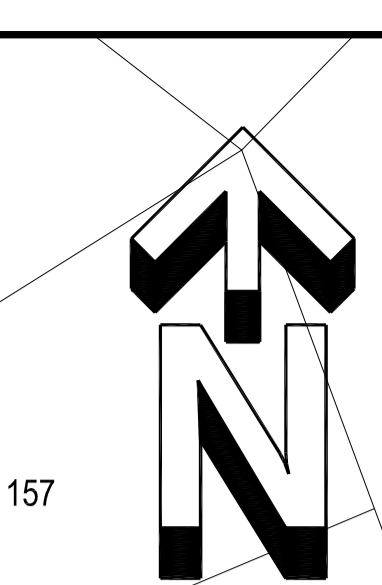
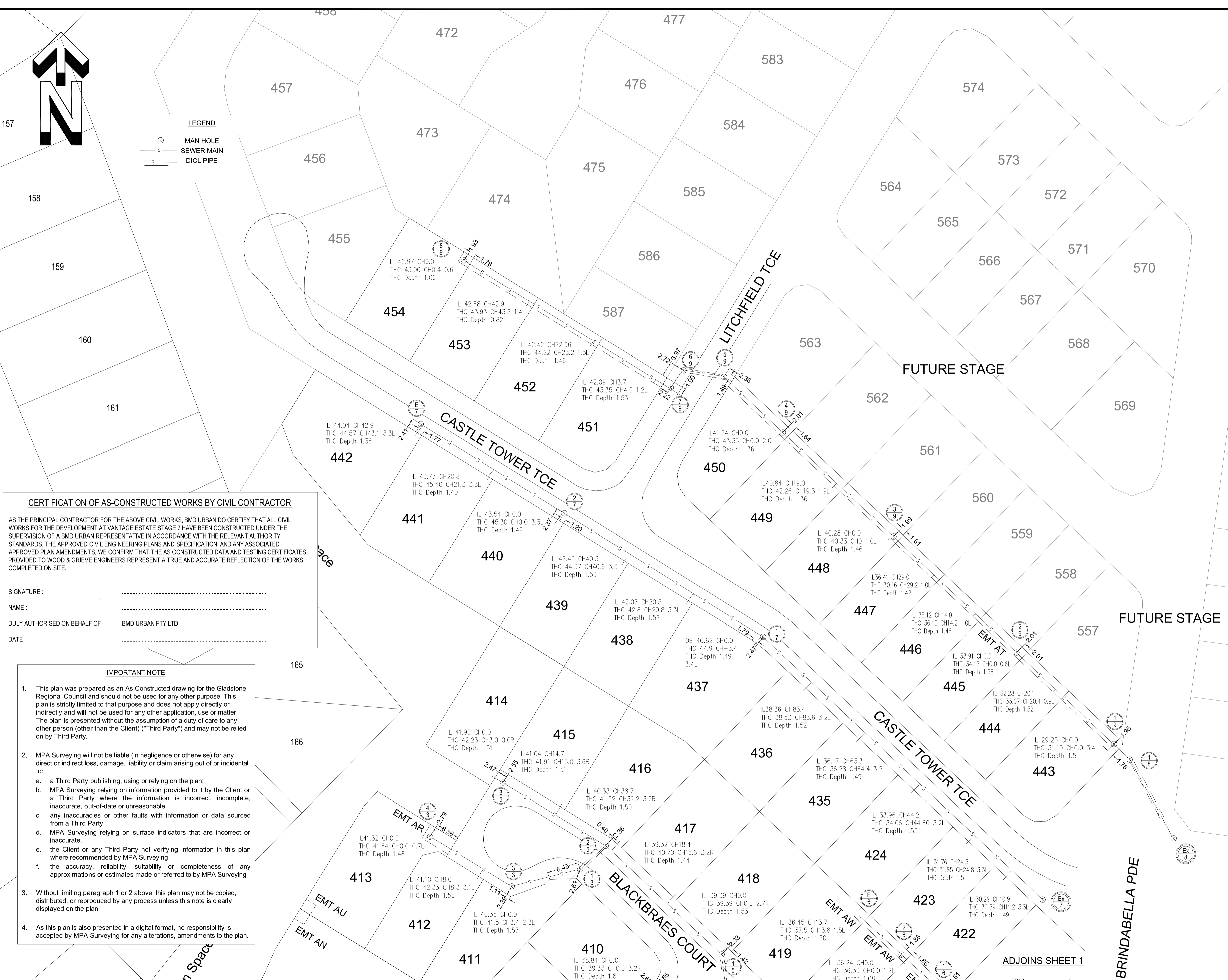


Structure	SL	Line	DSIL	USIL	Length	Grade %	Type	Grade 1 in X
Ex MH/1								
MH 1/1	39.76	Ex MH/1 - MH 1/1	35.56	37.02	23.24	6.3	150 PVC	15.9
MH 2/1	40.77	MH 1/1 - MH 2/1	37.06	38.74	19.22	8.7	150 DICL	11.4
MH 3/1	42.72	MH 2/1 - MH 3/1	38.80	41.13	38.86	6.0	150 PVC	16.7
BEND B4/1		MH 3/1 - BEND B4/1	41.14	41.30	5.66	2.8	150 PVC	35.4
MH 6/1	44.48	BEND B4/1 - MH 6/1	41.30	42.04	25.90	2.9	150 PVC	35.0
MH 7/1	45.5	MH 6/1 - MH 7/1	42.07	43.31	21.85	5.7	150 PVC	17.6
MH 8/1	46.42	MH 7/1 - MH 8/1	43.34	44.46	17.60	6.4	150 PVC	15.7
MH 9/1	46.62	MH 8/1 - MH 9/1	44.55	44.89	21.46	1.6	150 DICL	63.1
MH 6/1	44.48							
MH 1/4	44.98	MH 6/1 - MH 1/4	42.09	42.47	26.61	1.4	150 PVC	70.0
Ex MH/1								
MH 1/2	38.76	Ex MH/1 - MH 1/2	35.56	36.91	24.98	5.4	150 PVC	18.5
MH 2/2	40.74	MH 1/2 - MH 2/2	36.94	39.18	37.62	6.0	150 PVC	16.8
MH 3/2	45.52	MH 2/2 - MH 3/2	39.21	43.05	61.55	6.2	150 PVC	16.0
MH 1/1	39.77							
MH 1/5	40.86	MH 1/1 - MH 1/5	37.06	38.31	15.00	8.3	150 DICL	12.0
MH 2/5	43	MH 1/5 - MH 2/5	38.39	40.26	40.52	4.6	150 PVC	21.7
MH 3/5	43.7	MH 2/5 - MH 3/5	40.28	41.84	30.76	5.1	150 PVC	19.7
MH 2/5								
MH 1/3	43.01	MH 2/5 - MH 1/3	40.27	40.40	8.50	1.5	150 PVC	65.4
MH 3/3	43.52	MH 1/3 - MH 3/3	40.42	40.95	17.57	3.0	150 PVC	33.2
MH 4/3	43.14	MH 3/3 - MH 4/3	41.00	41.26	24.19	1.1	150 PVC	93.0
MH 1/6	35.84							
MH 2/6	37.46	MH 1/6 - MH 2/6	34.74	34.98	13.19	1.8	150 PVC	55.0
MH 6/6	39.27	MH 2/6 - MH 6/6	36.28	36.51	14.08	1.6	150 PVC	61.2
Ex MH/7	30.59							
MH 1/7	40.35	Ex MH/7 - MH 1/7	29.14	40.31	100.60	11.1	150 PVC	9.0
MH 2/7	46.77	MH 1/7 - MH 2/7	40.36	43.47	60.74	5.1	150 PVC	19.5
MH 6/7	46.01	MH 2/7 - MH 6/7	43.52	44.04	43.39	1.2	150 PVC	83.4
Ex MH/8	30.15							
MH 1/8	30.16	Ex MH/8 - MH 1/8	26.87	27.36	23.05	2.1	150 DICL	47.0
MH 1/9	30.82	MH 1/8 - MH 1/9	28.83	29.16	4.37	7.6	150 PVC	13.2
MH 2/9	35.92	MH 1/9 - MH 2/9	30.23	33.68	33.82	10.2	150 PVC	9.8
MH 3/9	41.84	MH 2/9 - MH 3/9	33.72	37.72	43.59	9.2	150 PVC	10.9
MH 4/9	44.82	MH 3/9 - MH 4/9	39.94	41.46	38.65	3.9	150 PVC	25.4
MH 5/9	44.04	MH 4/9 - MH 5/9	41.51	41.76	20.08	1.2	150 PVC	80.3
MH 6/9	44.18	MH 5/9 - MH 6/9	41.78	41.92	9.97	1.4	150 DICL	71.2
MH 7/9	44.56	MH 6/9 - MH 7/9	41.95	42.00	4.80	1.0	150 PVC	96.0
MH 8/9	43.98	MH 7/9 - MH 8/9	42.05	42.91	63.00	1.4	150 PVC	73.3

Rev.	Original Issue	Reason for Issue or Amendment	Date	Drawn	Checked	Surveyed
A	Original Issue		30/9/13	KN	WF	MPA

MPA SURVEYING
 Head Office L6, 345 Ann St, Brisbane Q 4000 P 07 3002 2300
 mpa surveying.com.au
 Mackay Emerald Gladstone Brisbane Sunshine Coast
 ENGINEERING MINING CONSTRUCTION CADASTRAL

Project: Vantage Estate Stage 7	MPA Job No: G12020	Scale: 1:500 at A1
Title: Sewer Reticulation Asconstructed	Level Datum: AHD D RL57.996	Origin: PSM 95145
Client: Peet Pty Ltd	Co-ord System: MGA Zone 56	MPA Drawing No: G12020-S7-01
	Revision: A	Sheet: 1 of 2



LEGEND
 ○ MAN HOLE
 — S — SEWER MAIN
 — DI/CL — DI/CL PIPE

CERTIFICATION OF AS-CONSTRUCTED WORKS BY CIVIL CONTRACTOR
 AS THE PRINCIPAL CONTRACTOR FOR THE ABOVE CIVIL WORKS, BMD URBAN DO CERTIFY THAT ALL CIVIL WORKS FOR THE DEVELOPMENT AT VANTAGE ESTATE STAGE 7 HAVE BEEN CONSTRUCTED UNDER THE SUPERVISION OF A BMD URBAN REPRESENTATIVE IN ACCORDANCE WITH THE RELEVANT AUTHORITY STANDARDS, THE APPROVED CIVIL ENGINEERING PLANS AND SPECIFICATION, AND ANY ASSOCIATED APPROVED PLAN AMENDMENTS. WE CONFIRM THAT THE AS CONSTRUCTED DATA AND TESTING CERTIFICATES PROVIDED TO WOOD & GRIEVE ENGINEERS REPRESENT A TRUE AND ACCURATE REFLECTION OF THE WORKS COMPLETED ON SITE.

SIGNATURE: _____
 NAME: _____
 DULY AUTHORISED ON BEHALF OF: BMD URBAN PTY LTD
 DATE: _____

IMPORTANT NOTE

- This plan was prepared as an As Constructed drawing for the Gladstone Regional Council and should not be used for any other purpose. This plan is strictly limited to that purpose and does not apply directly or indirectly and will not be used for any other application, use or matter. The plan is presented without the assumption of a duty of care to any other person (other than the Client) ("Third Party") and may not be relied on by Third Party.
- MPA Surveying will not be liable (in negligence or otherwise) for any direct or indirect loss, damage, liability or claim arising out of or incidental to:
 - a Third Party publishing, using or relying on the plan;
 - MPA Surveying relying on information provided to it by the Client or a Third Party where the information is incorrect, incomplete, inaccurate, out-of-date or unreasonable;
 - any inaccuracies or other faults with information or data sourced from a Third Party;
 - MPA Surveying relying on surface indicators that are incorrect or inaccurate;
 - the Client or any Third Party not verifying information in this plan where recommended by MPA Surveying;
 - the accuracy, reliability, suitability or completeness of any approximations or estimates made or referred to by MPA Surveying
- Without limiting paragraph 1 or 2 above, this plan may not be copied, distributed, or reproduced by any process unless this note is clearly displayed on the plan.
- As this plan is also presented in a digital format, no responsibility is accepted by MPA Surveying for any alterations, amendments to the plan.

Structure	SL	Line	From	To	DSIL	USIL	Length	Grade %	Type	Grade lin X
MH 1/1	39.76	Ex MH/1	MH 1/1	MH 1/1	35.56	37.02	23.24	6.3	150 PVC	15.9
MH 2/1	40.77	MH 1/1	MH 2/1	MH 2/1	37.06	38.74	19.22	8.7	150 DI/CL	11.4
MH 3/1	42.72	MH 2/1	MH 3/1	MH 3/1	38.80	41.13	38.86	6.0	150 PVC	16.7
BEND B4/1		MH 3/1	BEND B4/1	BEND B4/1	41.14	41.30	5.66	2.8	150 PVC	35.4
MH 6/1	44.48	BEND B4/1	MH 6/1	MH 6/1	41.30	42.04	25.90	2.9	150 PVC	35.0
MH 7/1	45.5	MH 6/1	MH 7/1	MH 7/1	42.07	43.31	21.85	5.7	150 PVC	17.6
MH 8/1	46.42	MH 7/1	MH 8/1	MH 8/1	43.34	44.46	17.60	6.4	150 PVC	15.7
MH 9/1	46.62	MH 8/1	MH 9/1	MH 9/1	44.55	44.89	21.46	1.6	150 DI/CL	63.1
MH 6/1	44.48									
MH 1/4	44.98	MH 6/1	MH 1/4	MH 1/4	42.09	42.47	26.61	1.4	150 PVC	70.0
Ex MH/1										
MH 1/2	38.76	Ex MH/1	MH 1/2	MH 1/2	35.56	36.91	24.98	5.4	150 PVC	18.5
MH 2/2	40.74	MH 1/2	MH 2/2	MH 2/2	36.94	39.18	37.62	6.0	150 PVC	16.8
MH 3/2	45.52	MH 2/2	MH 3/2	MH 3/2	39.21	43.05	61.55	6.2	150 PVC	16.0
MH 1/1	39.77									
MH 1/5	40.86	MH 1/1	MH 1/5	MH 1/5	37.06	38.31	15.00	8.3	150 DI/CL	12.0
MH 2/5	43	MH 1/5	MH 2/5	MH 2/5	38.39	40.26	40.52	4.6	150 PVC	21.7
MH 3/5	43.7	MH 2/5	MH 3/5	MH 3/5	40.28	41.84	30.76	5.1	150 PVC	19.7
MH 2/5										
MH 1/3	43.01	MH 2/5	MH 1/3	MH 1/3	40.27	40.40	8.50	1.5	150 PVC	65.4
MH 3/3	43.52	MH 1/3	MH 3/3	MH 3/3	40.42	40.95	17.57	3.0	150 PVC	33.2
MH 4/3	43.14	MH 3/3	MH 4/3	MH 4/3	41.00	41.26	24.19	1.1	150 PVC	93.0
MH 1/6	35.84									
MH 2/6	37.46	MH 1/6	MH 2/6	MH 2/6	34.74	34.98	13.19	1.8	150 PVC	55.0
MH E/6	39.27	MH 2/6	MH E/6	MH E/6	36.28	36.51	14.08	1.6	150 PVC	61.2
Ex MH/7	30.59									
MH 1/7	40.35	Ex MH/7	MH 1/7	MH 1/7	29.14	40.31	100.60	11.1	150 PVC	9.0
MH 2/7	46.77	MH 1/7	MH 2/7	MH 2/7	40.36	43.47	60.74	5.1	150 PVC	19.5
MH E/7	46.01	MH 2/7	MH E/7	MH E/7	43.52	44.04	43.39	1.2	150 PVC	83.4
Ex MH/8	30.15									
MH 1/8	30.16	Ex MH/8	MH 1/8	MH 1/8	26.87	27.36	23.05	2.1	150 DI/CL	47.0
MH 1/9	30.82	MH 1/8	MH 1/9	MH 1/9	28.83	29.16	4.37	7.6	150 PVC	13.2
MH 2/9	35.92	MH 1/9	MH 2/9	MH 2/9	30.23	33.68	33.82	10.2	150 PVC	9.8
MH 3/9	41.84	MH 2/9	MH 3/9	MH 3/9	33.72	37.72	43.59	9.2	150 PVC	10.9
MH 4/9	44.82	MH 3/9	MH 4/9	MH 4/9	39.94	41.46	38.65	3.9	150 PVC	25.4
MH 5/9	44.04	MH 4/9	MH 5/9	MH 5/9	41.51	41.76	20.08	1.2	150 PVC	80.3
MH 6/9	44.18	MH 5/9	MH 6/9	MH 6/9	41.78	41.92	9.97	1.4	150 DI/CL	71.2
MH 7/9	44.56	MH 6/9	MH 7/9	MH 7/9	41.95	42.00	4.80	1.0	150 PVC	96.0

CERTIFICATION OF AS-CONSTRUCTED WORKS BY SURVEYOR
 MPA SURVEYING DO CERTIFY THAT THE AS CONSTRUCTED DATA AND PLANS PROVIDED TO BMD URBAN (AS THE PRINCIPAL CIVIL CONTRACTOR) FOR THE DEVELOPMENT AT VANTAGE ESTATE STAGE 7 IS A TRUE AND ACCURATE REFLECTION OF THE WORKS COMPLETED ON SITE. WE CONFIRM THAT ALL DATA AND PLANS HAVE BEEN PRESENTED USING THE CORRECT DATUM AND ORIENTATION APPROPRIATE TO THE SITE IN A FORMAT AS REQUIRED BY THE RELEVANT LOCAL AUTHORITY STANDARDS.

SIGNATURE: _____
 NAME: _____
 DULY AUTHORISED ON BEHALF OF: MPA SURVEYING
 DATE: _____

WORKS AS-CONSTRUCTED
 BASED ON THE INFORMATION SUPPLIED BY THE PROJECT SURVEYOR MPA SURVEYING, THE QUALITY ASSURANCE DOCUMENTATION RECEIVED FROM THE PRINCIPAL CIVIL CONTRACTOR BMD URBAN, AND THE REGULAR SITE INSPECTIONS CARRIED OUT, WE VERIFY THAT THE INTENT OF THE APPROVED DESIGN DRAWINGS HAS BEEN ACHIEVED, AND THIS DRAWING IS AN ACCURATE REPRESENTATION OF THE COMPLETED WORKS.

PROJECT: VANTAGE STAGE 7
 PROJECT NUMBER: 23520

SIGNATURE: _____ (RPEU 13360) DATE: _____

A SAUNDERS
 ON BEHALF OF:
 WOOD & GRIEVE ENGINEERS LTD

Rev.	Original Issue	Reason for Issue or Amendment	Date	Drawn	Checked	Surveyed
A	Original Issue		30/9/13	KN	WF	MPA

MPA SURVEYING
 Head Office L6, 345 Ann St, Brisbane Q 4000 P 07 3002 2300
 Mackay Emerald Gladstone Brisbane Sunshine Coast
 mpasurveying.com.au
 ENGINEERING MINING CONSTRUCTION CADASTRAL

Project: Vantage Estate Stage 7	MPA Job No: G12020	Scale: 1:500 at A1
Title: Sewer Reticulation Asconstructed	Level Datum: AHD D RL57.996	Origin: PSM 95145
Client: Peet Pty Ltd	Co-ord System: MGA Zone 56	MPA Drawing No: G12020-S7-01
	Revision: A	Sheet: 2 of 2